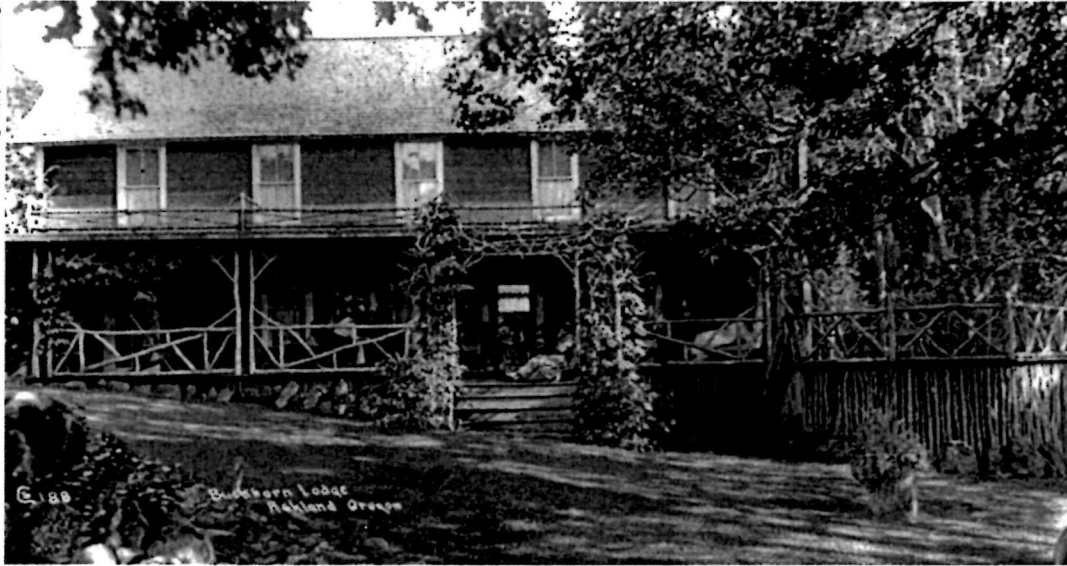


Courtesy of the Oregon  
Historical Society.



# Local Services

Cascade-Siskiyou

BLM

## Welcome

Thank you for visiting Cascade-Siskiyou National Monument, a unit of Bureau of Land Management's National Conservation Lands. The monument was set aside on June 9, 2000 in recognition of its remarkable setting and biologic diversity. The monument is situated where the Klamath, Siskiyou, and Cascade Mountain ranges converge, setting the stage for dramatic scenery and a diverse range of plant and animal habitat.

BLM's National Conservation Lands are part of an active vibrant landscape where people live, work, and play. They feature exceptional opportunities for recreation, solitude, wildlife viewing and exploration. In keeping with NCL philosophy, visitor services such as visitor centers, lodging and restaurants are located in adjacent communities. This philosophy was designed with the intent that communities will benefit economically from providing visitor services while minimizing the impact on the resource by not building intensive infrastructure such as roads and buildings inside the monument boundary. The result is leaving the landscape as it was found, while supporting local communities.

## Local Services Directories

City of Ashland, Chamber of  
Commerce  
<http://www.ashlandchamber.com/>  
110 E. Main Street  
Ashland, OR 97520  
Phone: (541) 482-3486 ext. 106

Klamath Falls, Chamber of  
Commerce  
<http://klamath.org/>  
205 Riverside Dr, Suite A  
Klamath Falls, OR 97601

Community of Greensprings  
<http://green-springs.net>

City of Medford  
<http://www.visitmedford.org>

## Food

Green Springs Inn & Cabins  
Restaurant, cabins and lodge  
11470 Greensprings Highway 66  
Ashland, OR 97520  
(541) 890-6435  
<http://www.greenspringsinn.com>

Campers Cove Resort, LLC  
Cabins, restaurant, sundry shop  
7900 Hyatt Prairie Rd  
Ashland Oregon 97520  
Phone 541-482-3331  
[hyattlakeresorts@yahoo.com](mailto:hyattlakeresorts@yahoo.com)

Pinehurst Inn  
Bed and Breakfast, restaurant  
17250 Greensprings Highway 66  
Ashland, OR 97520  
(541) 488-1002  
<http://www.thepinehurstinn.com>



## Camping

Cascade-Siskiyou National Monument-BLM Campgrounds:  
Hyatt Lake Campground  
Wildcat Campground  
Horse Camp  
RV, Group and Tent camping  
(541) 618-2200  
<http://www.blm.gov/or/resources/recreation/files/brochures/>

Jackson County Campgrounds at Howard Prairie Lake:  
Willow Point  
Asperkaha  
Sugar Pine Group  
Klum Landing  
Grizzly  
<http://www.co.jackson.or.us/>

Camping in Klamath Falls:  
Fourmile Lake Campground  
(541) 885-3400

Jackson County Campgrounds at Emigrant Lake:  
Oak Slope Campground  
Point RV Park

## Lodging

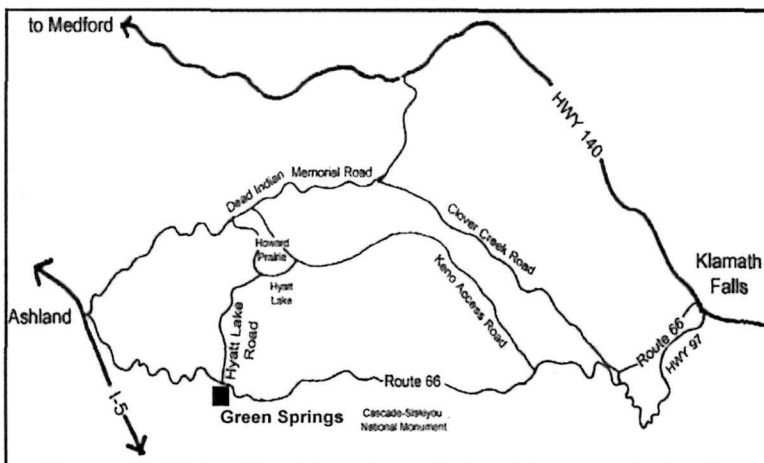
Green Springs Inn & Cabins  
Restaurant, cabins, lodge  
11470 Greensprings Highway 66  
Ashland, OR 97520  
(541) 890-6435  
<http://www.greenspringsinn.com/>

Box R Ranch  
Cabins, group meeting area, cattle ranch and museum  
16799 Highway 66  
Ashland, OR 97520  
(541) 482-1873  
<http://www.boxrranch.com/>

Buckhorn Springs  
Group or private retreats  
2200 Buckhorn Springs Road  
Ashland, OR 97520  
(541) 488-2200  
[buckhornsprings.org](http://buckhornsprings.org)

Campers Cove, LLC.  
Cabin rentals and sundry shop.  
(541) 482-3331  
<http://hyattlakeresorts.com/>

Pinehurst Inn  
Bed and Breakfast  
17250 Greensprings Highway 66  
Ashland, OR 97520  
(541) 488-1002  
<http://www.thepinehurstinn.com/>



map.jpgphoto of Historic Buckhorn Inn

### Services Availability

During winter months always call ahead for special hours of operation.

### Fuel

Nearest fuel services are located near I-5 Exit 14 in Ashland

### Disclosure

This bulletin is intended as a visitor service only, and does not represent an endorsement. Business hours and operations are subject to change without notice.

