

Alien Run Mountain Bike Trails

NORTHWEST NEW MEXICO

FARMINGTON FIELD OFFICE (505) 564-7600
6251 College Boulevard • Farmington, NM 87402

Ah-Shi-Sle-Pah Wilderness
The 7,242-acre wilderness is in a badland area of rolling, water-carved clay hills. The area, rich in fossils, has yielded numerous specimens important to science.

Alien Run Mountain Bike Trails
Alien Run consists of three looped mountain bike trails that cover more than 26 miles. The original loop and the Outer Limits Trail encircle a rumored UFO crash site. The trail features swooping flow trail, rim riding, slickrock sections, and tight turns through the piñon-juniper woodland. The Alien Run Outer Limits extension features rocky climbs and plunging downhill. The trail is known for including one of the largest selections of slickrock in New Mexico.

Angel Peak Scenic Area
Within this 10,000-acre area rises the scenic Angel Peak, at nearly 7,000 feet. A short nature trail leads to an overlook of blue and gray shale badlands formed from floodplains of ancient rivers. Angel Peak has three picnic areas with ADA accessible toilets. The campground has nine sites available for tent camping. There are ADA accessible restrooms. No drinking water or electrical hookups are available.

Bisti/De-Na-Zin Wilderness
A favorite with photographers for its hoodoo formations, the wilderness is a remote, desolate area of steeply eroded and colorful badlands. Time and natural elements have created strange rock formations here and some of the most extraordinary scenery in New Mexico.

Dunes Off-Highway Vehicle Recreation Area
More than 800 acres are available for off-highway vehicle (OHV) enthusiasts in this sand dune area.

Glade Run Recreation Area
The Glade Run Recreation Area offers many miles of motorized and nonmotorized trails through piñon-juniper woodland, sandstone bluffs, sandy arroyos, and badlands. Jeeps, utility-type vehicles (UTVs), all-terrain vehicles (ATVs), dirt bikes, mountain bikes, equestrians, and hikers will all find a place to play. Ten designated campsites are available at the Brown Springs Campground, which has shelters, picnic tables, campfire rings, two vault toilets, a group shelter with large grill, and a lot for track for kids on dirt bikes or ATVs. Designated and dispersed camping in the recreation area requires a free permit from the BLM. The recreation area is known for its national class rock crawling, having hosted the Grand Nationals Rock Crawling Championships for many years. The oldest continuously held mountain bike race in the United States, the Road Apple Rally, also takes place here.

Head Canyon Off-Highway Vehicle Recreation Area
Head Canyon provides an opportunity for OHV users to ride or practice their skills on an open motocross track. The track covers the majority of the 140 acres found at Head Canyon.

Navajo Lake Horse Trail
This equestrian trail provides scenic views of Navajo Lake Dam and the upper waters of the San Juan River.

Piñon Mesa Recreation Area
The Piñon Mesa Recreation Area is a beautiful badlands area for hiking, biking, and equestrian use. OHVs are allowed on designated roads and trails.

Simón Canyon Recreation Area
This sandstone canyon offers dispersed camping, hiking, and birdwatching. The San Juan River provides excellent fishing at the mouth of Simón Canyon. Overlooking the area, the partially restored Simón Ruin, a single-room Navajo Pueblo, is built on top of a 20-foot tall boulder. The recreation area has a restroom, picnic tables, and campfire rings. No drinking water or electrical hookups are available.

RIO PUERCO FIELD OFFICE (505) 761-8700
100 Sun Avenue, NE, Pan American Building, Suite 330
Albuquerque, NM 87109

Cebolla Wilderness
The 61,600-acre Cebolla Wilderness is made up of sandstone mesas, canyons, and grassy valleys. It contains La Ventana Natural Arch, a dramatic sandstone arch sculpted by wind and water. The wilderness, which features four hiking trails, is located within the El Malpais National Conservation Area (NCA).

Chain of Craters Backcountry Byway
The 33-mile byway passes through El Malpais NCA. Visitors may see volcanic cinder cones and sandstone bluffs, explore hiking trails, and camp in this unique natural setting. High-clearance vehicles are suggested.

El Malpais National Conservation Area (505) 280-2918
This "bad country" (El Malpais) includes lava flows, some dating back 800,000 years. A must-see is La Ventana Natural Arch, a beautiful sandstone arch with easy access from Highway 117. The Joe Keen Campground offers 10 campsites with picnic tables, shelters, and a restroom. The El Malpais Ranger Station, La Ventana Natural Arch, and the Narrows Picnic Area all have picnic tables. The ranger station has a restroom and drinking water. The NCA contains two wilderness areas—Cebolla and West Malpais.

New Mexico's NCL units include four national monuments, two national conservation areas, three national scenic and historic trails, two wild and scenic rivers, 18 wilderness areas, and 47 wilderness study areas (WSAs). Those WSAs with legal public access are listed at the end of each mapbook section. WSAs are places that are characterized by "naturalness" and that Congress is considering designating and protecting as wilderness—places that offer outstanding opportunities for solitude and primitive recreation.

For more information on the sites described in this brochure, please visit www.blm.gov/visit.

HELP US PROTECT YOUR PUBLIC LANDS
We need your help to protect your public lands for current and future generations to enjoy. To report crimes in progress on BLM public lands, please call 911. To report crimes against natural resources on BLM lands, contact the BLM's Law Enforcement Dispatch at (800) 637-9152.

The BLM welcomes you to the great State of New Mexico. Enjoy your public lands!



Kasha-Katuwe Tent Rocks National Monument

Kasha-Katuwe Tent Rocks is known for its scenic, cone-shaped tent formations, which are composed of pumice, ash, and tuff deposits from volcanic eruptions 6–7 million years ago. The monument includes two national recreation trails: the Slot Canyon Trail (3 miles roundtrip) and the Cave Loop Trail (1.2 miles). A 1-mile ADA accessible loop trail at the Veterans Memorial Overlook offers stunning views of the picturesque Perla Canyon and Jemez Mountain peaks. There are picnic tables and restrooms. No drinking water is available. The monument is closed to dogs, excluding service animals.

Ojito Wilderness
Deep, meandering arroyos offer miles of terrain in which to wander amid canyons, cliffs, and some colorful geological formations. Summer monsoon rains often provide just enough rain to make this area flourish with blooming desert plants.

Perea Nature Trail
The Perea Nature Trail (1 mile roundtrip) is a flat interpretive trail that takes visitors through the riparian zone of the Rio Salado. Views from the trail include the purple-hued rock formations of the nearby Nacimiento Mountains.

West Malpais Wilderness
The West Malpais Wilderness encompasses grassland, piñon-juniper woodland, ponderosa pine stands, and basalt lava fields. A designated trail leads to Hole-in-the-Wall, an area surrounded (but not covered) by lava flows. The wilderness is located within the El Malpais NCA.

White Ridge Bike Trails
The bike trails cross a landscape of spectacular beauty and exceptional geology. The trails were developed for mountain biking, but hikers are also welcome. The westernmost trail is also open to equestrian use.

WILDERNESS STUDY AREAS

- Empedrado and La Leña**
The adjacent Empedrado and La Leña Wilderness Study Areas (WSAs) feature deep arroyos, highly sculpted mesas, canyons, and sandstone and shale outcrops. Sweeping vistas can be found throughout these remote areas. The Continental Divide National Scenic Trail passes through these WSAs.
- Cabezon**
Cabezon Peak's dramatic volcanic formation is a well-known New Mexico landmark (elevation, 7,795 feet; prominence, about 1,300 feet). A primitive trail leads to the base of the cliffs, basic mountaineering experience is required to reach the summit.
- Chamisa and Ignacio Chavez**
The northern portion of these adjacent WSAs is arid, while the southern portion consists of a higher plateau dominated by piñon and ponderosa pines. The Continental Divide National Scenic Trail passes through the Ignacio Chavez WSA.

El Malpais
This area is characterized by rugged basalt flows, grassland, piñon-juniper woodland, and open stands of ponderosa pine cover the area. The Continental Divide National Scenic Trail passes through a portion of the WSA.

Chain of Craters
More than a dozen volcanic cinder cones found here are part of a larger group of craters. The lower elevations are dominated by piñon-juniper woodlands, which give way to forests of ponderosa pine at higher elevations. The Continental Divide National Scenic Trail passes through the WSA.

TAOS FIELD OFFICE (575) 758-8851
226 Cruz Alta Road • Taos, NM 87571

Rio Chama Wild and Scenic River
The Rio Chama was designated by Congress as a wild and scenic river in 1988. Towering cliffs, heavily wooded side canyons, and historic sites offer an outstanding wild river backdrop for the angler or boater. Access is primarily by boat; however, visitors can hike to the river in a few areas.

WILDERNESS STUDY AREA

1 Rio Chama
The landscape of the Rio Chama WSA consists of gently rolling, sagebrush-covered plains and a 900-foot-deep canyon of colorful siltstone and sandstone carved by the Rio Chama.

NORTHEAST NEW MEXICO

TAOS FIELD OFFICE (575) 758-8851
226 Cruz Alta Road • Taos, NM 87571

Diablo Canyon Recreation Area
This area near Santa Fe is a very popular destination for rock climbers. A 2-mile, nonmotorized route through the canyon brings visitors to the Rio Grande. There are no facilities.

La Ciengueilla Petroglyph Site
Hundreds of petroglyphs can be found along a trail that winds its way along a rock-lined escarpment near the Santa Fe River southwest of Santa Fe. There are no facilities.

Posi-Ouinge Recreation Area
Adjacent to Ojo Caliente Hot Springs, this area features 10 campsites with picnic tables, shelters, and a restroom. The Posi-Ouinge Recreation Area is located within the El Malpais National Conservation Area (NCA).



Fort Craig National Historic Site



Continental Divide National Scenic Trail

Sabinoso Wilderness



Rio Grande del Norte National Monument

RIO GRANDE DEL NORTE NATIONAL MONUMENT
RIO GRANDE GORGE VISITOR CENTER (575) 751-4899
WILD RIVERS VISITOR CENTER (575) 586-1150

The 242,710-acre Rio Grande del Norte National Monument, designated in March 2013, comprises rugged, wide-open plains at an average elevation of 7,000 feet. It is dotted by volcanic cones and cut by steep canyons, with rivers tucked away in their depths. One of its highlights is the Rio Grande Gorge, which is more than 82 miles long. The gorge is carved through layers of volcanic rock and ash and in places is about 800 feet deep and a mile wide. When flows are sufficient, the Rio Grande offers some of the best whitewater boating in New Mexico. The main river and its tributaries, particularly the Red River, also provide great opportunities for fishing.

There are two visitor centers within the monument—in the north, the Rio Grande Gorge Visitor Center; in the south, the Rio Grande Gorge Visitor Center.

Most campgrounds in the monument have covered shelters, tables, grills, restrooms, and drinking water. Dispersed camping is also allowed in most of the monument's undeveloped areas. In the upper gorge, the Wild Rivers Recreation Area near Questa has several campgrounds and nonmotorized trails that provide access to the river and along the rim of, or into, the Guadalupe Mountains. In the lower gorge, Orilla Verde Recreation Area has campgrounds, some with electric and water hookups, one with showers (Rio Bravo Campground), and all have river access. There are several developed trails in this area and at the Taos Valley Overlook, which offers more than 23 miles of nonmotorized trails.

The western portion of the monument, the Taos Plateau, is dominated by several large volcanoes that rise 1,000–2,000 feet above the surrounding plain. Cerro del Yuta—or 'The Mountain'—is the highest peak within the monument (elevation, 10,082 feet; prominence, approximately 2,500 feet). The Cerro del Yuta Wilderness encompasses 13,420 acres that encircle Cerro del Yuta. The western portion of the monument is home to New Mexico's largest elk herd and is a favorite hunting destination. Roads here are not maintained and can be hazardous when wet or during winter months.

The 8,120-acre Rio San Antonio Wilderness is located in the northwest corner of the monument. It consists of an open grass and shrub plain cut starkly by a narrow gorge about 100 feet deep, where Douglas fir and spruce line the Rio San Antonio.

Rio Grande and Red River Wild and Scenic Rivers

There are around 60 miles of the Rio Grande and about 4 miles of the Red River included in the nation's Wild and Scenic River System. Activities of note are fishing, float boating, hiking, biking, birdwatching, and wildlife viewing. Bighorn sheep and elk are among the more charismatic species that visitors may see.

Sabinoso Wilderness

The Sabinoso Wilderness is a remote area in northeastern New Mexico. The wilderness includes a series of high, narrow mesas surrounded by cliff-lined canyons. The area is known for its exceptional opportunities for hiking, horseback riding, backcountry camping, and hunting.

Santa Cruz Lake Recreation Area

This reservoir on the Santa Cruz River provides recreational opportunities for anglers, picnickers, campers, and boaters (no wakes allowed). A campground and several day-use sites near the lake have sheltered picnic tables and grills. Restrooms and drinking water are available.

Wild Rivers Backcountry Byway

This backcountry byway is a closed-loop road providing access to the Wild Rivers area of the Rio Grande del Norte National Monument north of Taos. The low-speed, paved road is about 13 miles long and provides access to many scenic views and recreational opportunities. Drinking water is available (seasonally, from April to October) at the developed recreation sites along the byway.

SOUTHWEST NEW MEXICO

SOCORRO FIELD OFFICE (575) 835-0412
901 South Highway 85 • Socorro, NM 87801

Datil Well Recreation Area Campground

The Datil Well Recreation Area Campground includes one of the 15 original water wells along the Magdalena Livestock Driveway, a 120-mile cattle trail that stretched from Springerville, Arizona, to Magdalena, New Mexico, in the 1800s. There are 22 individual campsites and one large group site, all with picnic tables, barbecue grills, and fire pits. Some sites have covered shelters. There are also 3 miles of looped hiking trails with several scenic overlooks. Restrooms are available. Drinking water is available seasonally, from April 15 to October 15.

Fort Craig National Historic Site

Established in 1854, Fort Craig was one of the largest forts in the West. This site is known for its authenticity, having been altered only by the hands of time. Ruins of stone structures stand in contrast to the fort's crumbling adobe buildings. This day-use area has an interpretive trail, picnic tables, restrooms, and drinking water.

Johnson (Gordy's) Hill Recreation Area

This 7,647-acre area offers excellent OHV and mountain bike opportunities and challenges for all experience levels.

Quebradas Backcountry Byway

The Quebradas Backcountry Byway is an unpaved country road traversing 24 miles of rugged, colorful landscapes east of Socorro/Escondido, south to San Antonio (east of I-25 and the Rio Grande River). The byway winds through scenic and unique geologic features. No drinking water is available along the byway.



Prehistoric Trackways National Monument



Fort Stanton - Snowy River Cave National Conservation Area



The Box Recreation Area

San Lorenzo Canyon
This scenic canyon offers opportunities for hiking, picnicking, horseback riding, photography, and primitive camping near slot canyons and a variety of spectacular sedimentary and volcanic rock formations. No drinking water is available.

Socorro Nature Area

The Socorro Nature Area is a 120-acre environmental education area in the Rio Grande Bosque. The area includes a 1/2-mile, self-guided nature walk with interpretive signs, an amphitheater, and a pond. There are picnic tables, a group shelter, and restroom. No drinking water is available.

The Box Recreation Area

The 640-acre Box Canyon is a popular technical rock climbing and bouldering area that requires specialized skills and equipment. It has a parking area and restroom but no drinking water.

WILDERNESS STUDY AREAS

- Mesita Blanca**
This flat to rolling grassland area is broken by isolated sandstone and basalt mesas. The 500-foot Red Hill Cinder Cone, and its associated lava flow, is a prominent feature.
- Eagle Peak**
This geologically and historically significant area features sandstone mesas, volcanic cinder cones, gently rolling hills, and lava flows in piñon-juniper woodlands interspersed with grasslands.
- Sierra Ladrones (Ladron Mountains)**
The Sierra Ladrones range rises from the Rio Grande Valley. The WSAs offers diverse topography, including high mountain peaks, isolated canyons, and badlands. There are no designated trails; however, hikers who find their way to the top of Ladron Mountains are rewarded with panoramic views. The highest point in the range is 9,114 feet, with a prominence of more than 3,000 feet above the surrounding plain.

Veranito

Low-lying hills cut by numerous arroyos characterize this arid area. The WSA is located adjacent to the Sevilleta National Wildlife Refuge.

11 Stallion

This semi-arid area is known for its rugged terrain and nearly vertical escarpments. Wild horses may be seen among the piñon and juniper vegetation covering much of the WSA.

12 Presilla and Sierra de Las Cañas

The variety of landforms in the neighboring Presilla and Sierra de Las Cañas WSAs includes arroyos cut through colorful layers of rock, sheer rock escarpments; deep, narrow canyons; mountain ridges; and badlands. These WSAs are bisected by the Quebradas Backcountry Byway.

13 Horse Mountain

The rugged and steep Horse Mountain (elevation, 9,350 feet; prominence, approximately 1,600 feet) rises above the Plains of San Augustin. This WSA offers interesting features, such as scenic pinnacles, a forested mountain environment, and sweeping vistas.

14 Continental Divide

Rolling grasslands give way to steeper slopes covered in piñon-juniper woodlands and ponderosa pine forests. Views from the high ridges stretch out for miles across the surrounding plains. The Continental Divide National Scenic Trail passes through this WSA. Pelona Mountain (elevation, 9,167 feet) is the highest point within the WSA.

15 Devil's Backbone

The Devil's Backbone WSA is characterized by sharp, rugged ridges and peaks rising above the surrounding desert grassland.

16 Antelope

Antelope is an open landscape of rolling desert prairie adjoining the Little San Pascual Wilderness, which is managed by the U.S. Fish & Wildlife Service.

17 Jornada del Muerto

Jornada del Muerto (Journey of the Dead) WSA is almost entirely composed of rugged lava flows broken by sinkholes and pressure ridges.

LAS CRUCES DISTRICT OFFICE

(575) 525-4300
1800 Marquess Street • Las Cruces, NM 88005

Aden Hills Off-Highway Vehicle Recreation Area

This OHV area includes 8,000 acres of open, flat, and rolling terrain, including about 18 miles of motorcycle and ATV trails.

Broad Canyon Wilderness

The 13,902-acre wilderness is well known for its steep walls and rock shelters that house important cultural sites.

Lake Valley Backcountry Byway

A meandering, 48-mile scenic drive on paved roads takes visitors through ranching and mining country and past the ruins of the 1880s mining town of Lake Valley.



Robledo Mountains Wilderness



Sierra Vista Trail



Lake Valley Historic Townsite

The mining town of Lake Valley was founded in 1878 after silver was discovered. Today, it is a ghost town. The forested schoolhouse provides a glimpse of what schooling in a rural area was like in the early 20th century. Restrooms and drinking water are available.

Organ Mountains – Desert Peaks National Monument

The Organ Mountains – Desert Peaks National Monument was established May 21, 2014. Spanning 496,529 acres, the monument is the largest in the state. The area is known for its ruggedly beautiful landscape and its significant scientific, historic, and prehistoric resources. The monument is made up of four separate units: the Doña Ana Mountains, the Robledo Mountains, the Potrillo Mountains, and the Iconic Organ Mountains.

From the Dripping Springs Natural Area Visitor Center in the Organ Mountains unit of the monument, visitors may access more than 4 miles of easy hiking/biking trails to scenic areas and historic ruins. There are accessible restrooms, 12 picnic sites, and one large family/group picnic site (no camping) that can be reserved by calling the Las Cruces District Office. Drinking water is also available. Pets are not allowed on the Dripping Springs Trail and a portion of the La Cueva Trail (see visitor center staff for more information).

The Aguire Spring Recreation Area in the Organ Mountains unit is nestled at the base of spectacular cliffs and overlooks the Tularosa Basin. Sites with shelters and shade trees may be used for picnicking or camping. The campground has a total of 55 individual campsites and two group sites available for reservation. Accessible restrooms are also available. Drinking water is available only outside the campground at the campground host site. The recreation area is also the trailhead for the Pine Tree National Recreation Trail (11.5 miles) and the Bay of Pines National Recreation Trail (12 miles roundtrip). These trails offer hikers access to very scenic sections of the Organ Mountains.

The Potrillo Mountains unit of the Organ Mountains – Desert Peaks National Monument is home to six different wilderness areas: the 27,673-acre Aden Lava Flow Wilderness, the 16,935-acre Cinder Cone Wilderness, the 12,155-acre East Potrillo Mountains Wilderness, the 8,382-acre Mount Riley Wilderness, the 105,085-acre Potrillo Mountains Wilderness, and the 9,616-acre Whitethorn Wilderness. The area offers visitors sandy areas, playas, lava fields, cinder cones, and volcanic craters. Visitors can make their way up Mount Riley for views of the nearby Aden Lava Flow, which features large fields of lava flows and volcanic craters.

Organ Mountains Wilderness

The 19,916-acre wilderness is located in the rugged and scenic Organ Mountains – Desert Peaks National Monument. The area features massive, jagged spires, pinnacles, and outcroppings with steep, rocky ridges interspersed by narrow, rocky canyons.

Point of Rocks

The large basalt outcropping known as Point of Rocks was a guiding landmark that travelers depended on when crossing a waterless portion of the Jornada del Muerto. The rock indicated that water was 10 miles away. Today, the route is part of El Camino Real de Tierra Adentro National Historic Trail. There is a parking lot and an interpretive kiosk at Point of Rocks, as well as a 1/2-mile loop trail to the top of the landmark and ridge.

Prehistoric Trackways National Monument

Prehistoric Trackways National Monument is adjacent to the Organ Mountains – Desert Peaks National Monument. Fossil tracks of amphibians, reptiles, and insects predate the dinosaurs, providing scientists with important information about life 286 million years ago. The best way to view these fossils is to join a BLM-led hike. OHV trails, from easy to extreme, are another feature of the monument.

The city of Las Cruces Museum of Nature and Science also has fossil trackways on exhibit. In addition, visitors may, by special arrangement, view the fossil tracks stored for scientific study at the New Mexico Museum of Natural History and Science in Albuquerque.

Robledo Mountains Wilderness

The 16,776-acre wilderness is characterized by rugged, steep canyons covered by desert grasses and shrubs. Robledo Mountain stands at an elevation of 5,866 feet. This wilderness area spans both the Prehistoric Trackways and Organ Mountains – Desert Peaks national monuments.

Sierra de Las Uvas Wilderness

The 11,114-acre wilderness offers a variety of landscapes of volcanic rock, cliffs, mesas, buttes, and deep canyons. The highest point is Magdalena Peak (elevation, 6,509 feet; prominence, nearly 2,000 feet).

Sierra Vista Trail

This 29-mile, nonmotorized trail—which runs along the western flank of the Organ Mountains and the eastern side of the Franklin Mountains—provides spectacular views of the mountains jutting majestically above the desert floor. Visitors may also see mule deer, coyotes, and other wildlife. The trail connects to the Franklin Mountain State Park trail system in Texas and is used primarily by mountain bikers; however, some sections near Vado are very sandy and difficult for mountain bikers. For map, go to www.blm.gov/visit.

Tortugas Mountain Recreation Area

Tortugas (Tortoise) Mountain is a small, hump-backed mountain (elevation, 4,928 feet; prominence, about 600 feet). Numerous nonmotorized trails encircle the mountain. Parking is provided in two lots; shaded picnic structures are also available.



Haystack Mountain Off-Highway Vehicle Area



Haystack Mountain Off-Highway Vehicle Area



Florida Mountains

Yost Escarpment

A 1 1/2-mile trail along the Jornada del Muerto provides visitors with an opportunity to experience the difficulties of traveling this desolate, waterless, 90-mile route (today, part of the El Camino Real de Tierra Adentro National Historic Trail). The Jornada del Muerto was taken by Spanish explorer Juan de Oñate and his expedition in 1598. Later, thousands of wagons, people, and livestock traveled across the Yost Escarpment to the small New Mexican towns of Spanish's northern frontier. The interpretive trail ends atop a steep cliff once crossed by determined travelers and huge freight wagons.

WILDERNESS STUDY AREAS

- Apache Box**
Apache Box includes a deep, narrow canyon carved by Apache Creek. Sheer cliffs rise 600 feet above the canyon floor and give way to steep, rocky slopes and mesas southeast of the canyon.
- Blue Creek**
The Blue Creek features rolling and rugged desert hills and drainages north of the Gila River and the Gila Lower Box WSA. Black Mountain dominates the WSA, while Blue Creek delineates part of the eastern boundary.

20 Gila Lower Box

The Gila Lower Box WSA is an oasis in the desert. The Gila River cuts a 5-mile-long, steep-walled canyon that is 600 feet deep in some places. The river is lined with lush groves of deciduous trees offering some of the best birding in New Mexico.

21 Peloncillo Mountains

New Mexico

PUBLIC LANDS RECREATION GUIDE

	Fee Site	Restrooms	Picnic Sites	Developed Campground	Drinking Water	Visitor Information or Ranger Station	No Facilities	Dispersed Recreation	ATV/OHV Trail	Bicycle/Mountain Bike Trail	Fishing	Hiking Trail	Horse Trail	River Rafting	Driving Route
--	----------	-----------	--------------	----------------------	----------------	---------------------------------------	---------------	----------------------	---------------	-----------------------------	---------	--------------	-------------	---------------	---------------

Northwest

FARMINGTON FIELD OFFICE

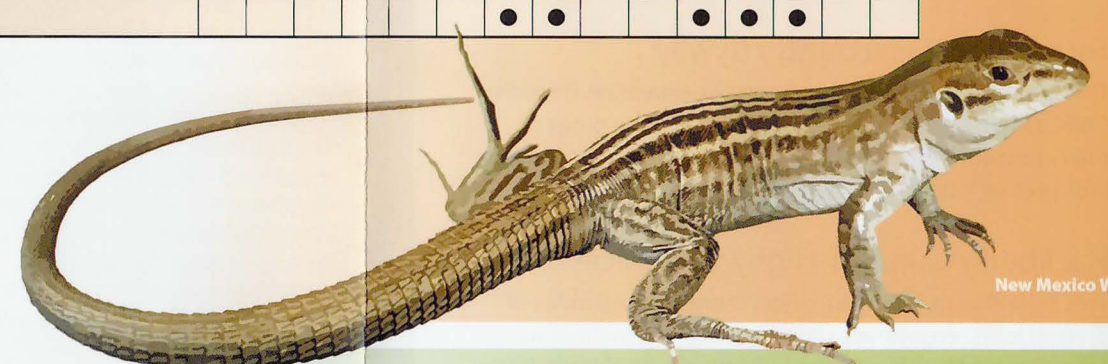
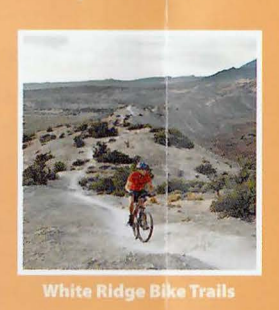
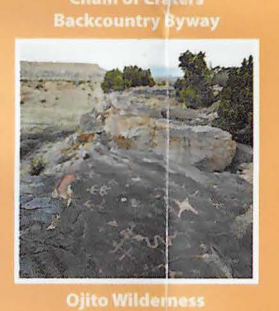
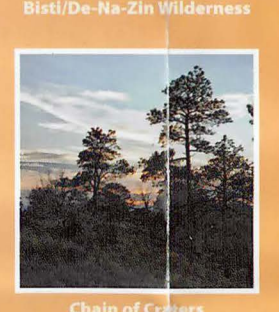
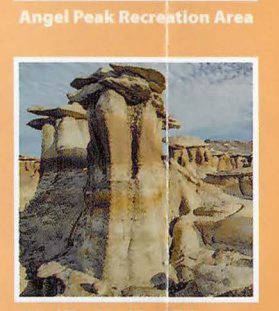
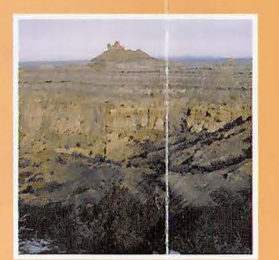
Ah-Shi-Sle-Pah Wilderness															
Allen Run Mountain Bike Trails															
Angel Peak Scenic Area															
Bisti/De-Na-Zin Wilderness															
Dunes OHV Recreation Area															
Glade Run Recreation Area															
Head Canyon OHV Recreation Area															
Navajo Lake Horse Trail															
Pinon Mesa Recreation Area															
Simón Canyon Recreation Area															

RIO PUERCO FIELD OFFICE

Cebolla Wilderness															
Chain of Craters Backcountry Byway															
El Malpais National Conservation Area															
Kasha-Katuwe Tent Rocks National Monument															
Ojito Wilderness															
Perea Nature Trail															
West Malpais Wilderness															
White Ridge Bike Trails															
Wilderness Study Areas #2-6															

TAOS FIELD OFFICE

Rio Chama Wild and Scenic River															
Wilderness Study Area #1															



	Fee Site	Restrooms	Picnic Sites	Developed Campground	Drinking Water	Visitor Information or Ranger Station	No Facilities	Dispersed Recreation	ATV/OHV Trail	Bicycle/Mountain Bike Trail	Fishing	Hiking Trail	Horse Trail	River Rafting	Driving Route
--	----------	-----------	--------------	----------------------	----------------	---------------------------------------	---------------	----------------------	---------------	-----------------------------	---------	--------------	-------------	---------------	---------------

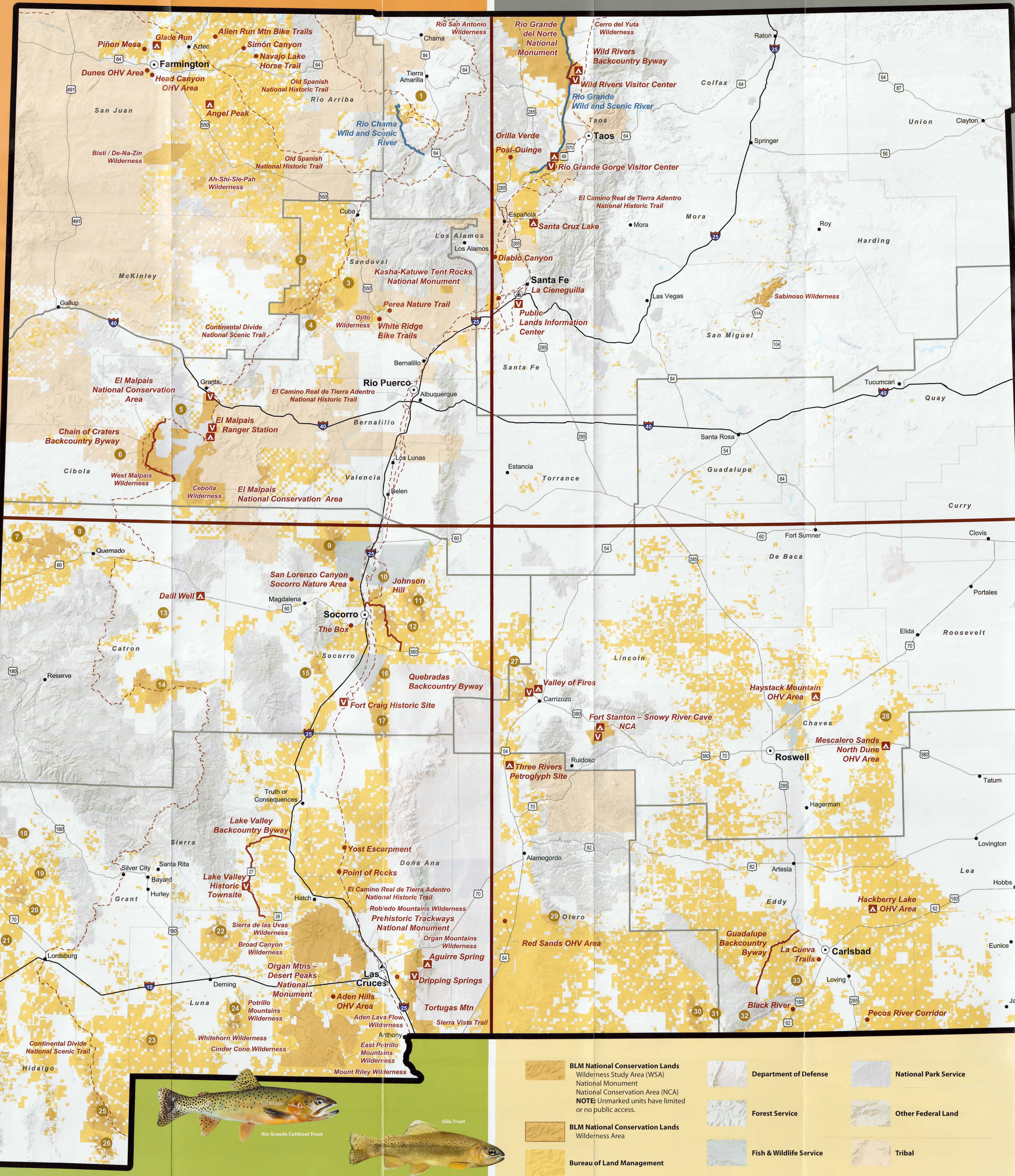
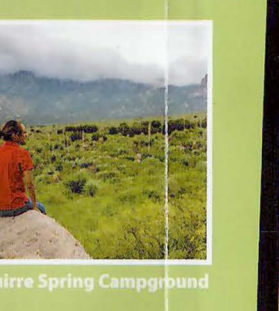
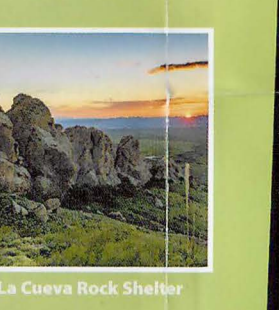
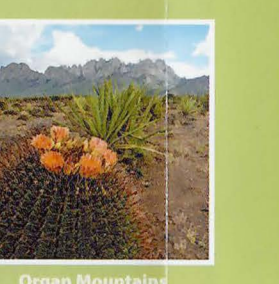
Southwest

SOCORRO FIELD OFFICE

Dattl Well Recreation Area Campground															
Fort Craig National Historic Site															
Johnson (Gordy's) Hill Recreation Area															
Quebradas Backcountry Byway															
San Lorenzo Canyon															
Socorro Nature Area															
The Box Recreation Area															
Wilderness Study Areas #7-17															

LAS CRUCES DISTRICT OFFICE

Aden Hills OHV Recreation Area															
Aden Lava Flow Wilderness															
Aguirre Spring Campground															
Broad Canyon Wilderness															
Cinder Cone Wilderness															
Dripping Springs Natural Area															
East Potrillo Mountains Wilderness															
Lake Valley Historic Townsite and Backcountry Byway															
Mount Riley Wilderness															
Organ Mountains - Desert Peaks National Monument															
Organ Mountains Wilderness															
Point of Rocks															
Potrillo Mountains Wilderness															
Prehistoric Trackways National Monument															
Robledo Mountains Wilderness															
Sierra de las Uvas Wilderness															
Sierra Vista Trail															
Tortugas Mountain Recreation Area															
Whitethorn Wilderness															
Yost Escarpment															
Wilderness Study Areas #18-26															



	Fee Site	Restrooms	Showers	Picnic Sites	Developed Campground	Boat Ramp/Boating	Drinking Water	Visitor Information or Ranger Station	No Facilities	Dispersed Recreation	ATV/OHV Trail	Bicycle/Mountain Bike Trail	Fishing	Hiking Trail	Horse Trail	Rock Climbing	River Rafting	Driving Route
--	----------	-----------	---------	--------------	----------------------	-------------------	----------------	---------------------------------------	---------------	----------------------	---------------	-----------------------------	---------	--------------	-------------	---------------	---------------	---------------

Northeast

TAOS FIELD OFFICE

Cerro del Yuta Wilderness																		
Diablo Canyon Recreation Area																		
La Cieneguilla Petroglyph Site																		
Posi-Ouinge Recreation Area																		
Public Lands Information Center (Santa Fe)																		
Rio Grande del Norte National Monument																		
Rio San Antonio Wilderness																		
Sabinoso Wilderness																		
Santa Cruz Lake Recreation Area																		
Wild Rivers Backcountry Byway																		



	Fee Site	Restrooms	Showers	Picnic Sites	Developed Campground	Boat Ramp/Boating	Drinking Water	Visitor Information or Ranger Station	No Facilities	Dispersed Recreation	ATV/OHV Trail	Bicycle/Mountain Bike Trail	Fishing	Hiking Trail	Horse Trail	River Rafting	Driving Route
--	----------	-----------	---------	--------------	----------------------	-------------------	----------------	---------------------------------------	---------------	----------------------	---------------	-----------------------------	---------	--------------	-------------	---------------	---------------

Southeast

ROSSELL FIELD OFFICE

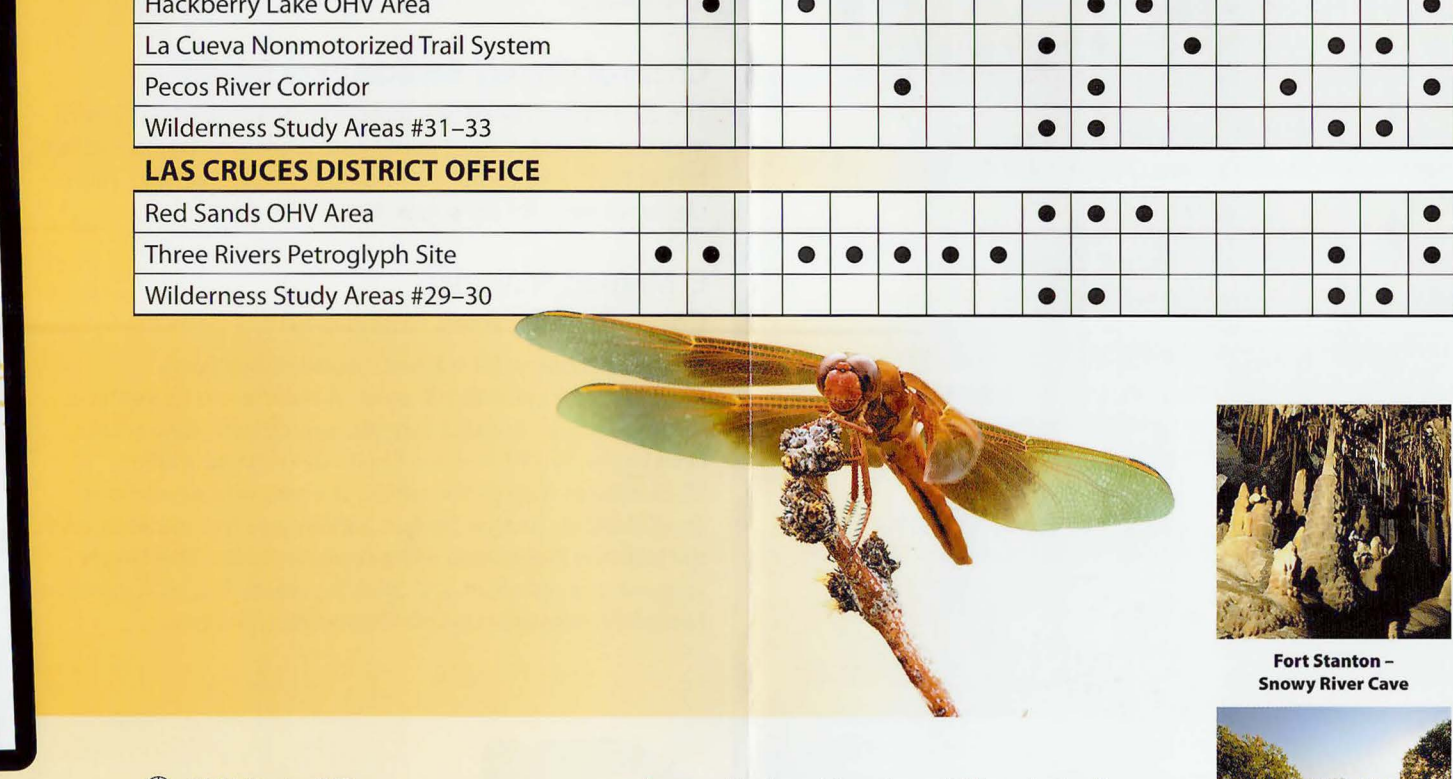
Cave Canyon Campground																		
Fort Stanton - Snowy River Cave National Conservation Area and Rob Jaggers Camping Area																		
Haystack Mountain OHV Area																		
Mescalero Sands North Dune OHV Area																		
Valley of Fires Recreation Area																		
Wilderness Study Areas #27-28																		

CARLSBAD FIELD OFFICE

Black River Recreation Area																		
Guadalupe Backcountry Byway																		
Hackberry Lake OHV Area																		
La Cueva Nonmotorized Trail System																		
Pecos River Corridor																		
Wilderness Study Areas #31-33																		

LAS CRUCES DISTRICT OFFICE

Red Sands OHV Area																		
Three Rivers Petroglyph Site																		
Wilderness Study Areas #29-30																		



BLM State Office
 BLM District Office
 BLM Field Office
 BLM Administrative Boundary
 BLM Campground
 Visitor Information or Ranger Station
 BLM Recreation Site
 BLM Backcountry Byway
 City/Town

National Scenic and Historic Trail
 Trail
 Wild and Scenic River
 Interstate Highway
 Federal Highway
 State Highway or County Road
 County Boundary
 River/Stream
 Water Body

Department of Defense
 Forest Service
 Fish & Wildlife Service
 National Park Service
 Other Federal Land
 Tribal

BLM National Conservation Lands Wilderness Study Area (WSA)
 National Conservation Area (NCA)
 National Monument
 NOTE: Unmarked units have limited or no public access.

Bureau of Land Management

0 10 20 30 40 50 Miles