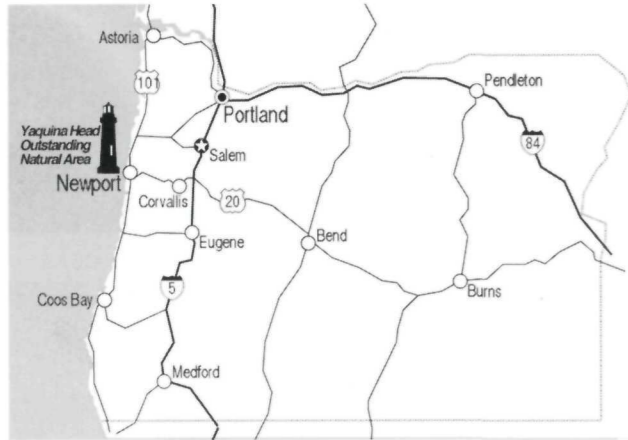


## Please help us protect this special place

The Bureau of Land Management is responsible for managing the site, and for preserving the natural, cultural, and historic values of this outstanding area for future generations.

## We are all 'partners in protection'

Please stay on the trails and do not disturb the wildlife or vegetation. Collecting shells, rocks, wildflowers or any natural objects – other than driftwood – is not allowed. Please leave them for others to enjoy.



Yaquina Head, open from dawn to dusk, is three miles (5 km) north of Newport on the Oregon Coast, off Highway 101. The Interpretive Center is usually open daily, but times change during different seasons. Please call or write for details.



### Bureau of Land Management

Yaquina Head Outstanding Natural Area  
Post Office Box 936  
Newport, Oregon 97365  
(541) 574-3100

Printed on recycled paper.  
Please recycle or dispose of properly.

BLM/OR/WA/GI-97/028-1122.33

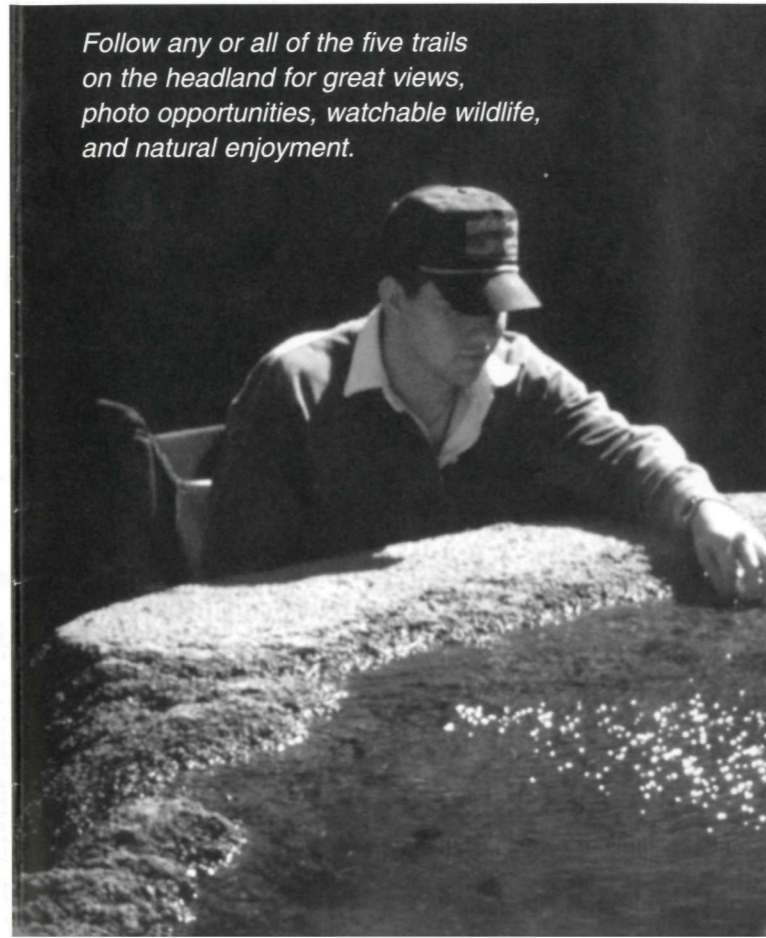


Bureau of Land Management

# Explore the headland

## Yaquina Head Outstanding Natural Area

Follow any or all of the five trails on the headland for great views, photo opportunities, watchable wildlife, and natural enjoyment.



## Lighthouse Trail



Walking time Allow 15 minutes each way

Notes Wheelchair accessible Steepest grade 11%  
Trail surface Asphalt

This trail along the western edge of the headland to the historic lighthouse is wheelchair accessible. Along the way, watch for harbor seals hauled out on the rocks.

### Look for whales!

Scan out toward the horizon and look for a plume of white spray, and a part of the back or the tail. You can also look for a crowd of people watching whales! Migrating gray whales usually make a series of shallow dives, blowing every 30 to 60 seconds, between deeper dives that last 3 to 5 minutes.

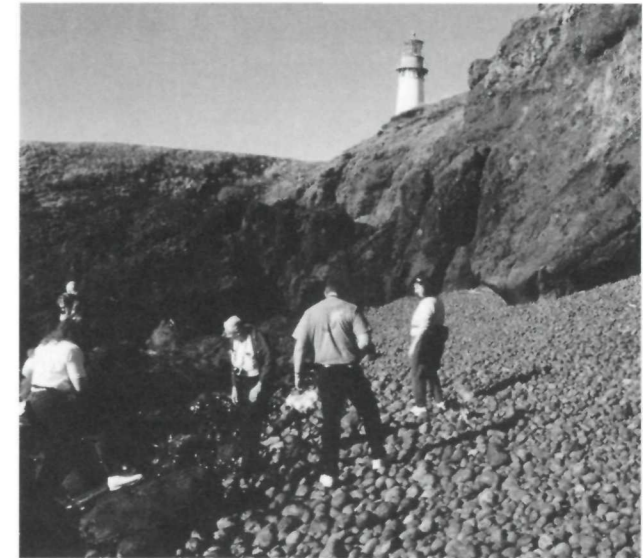


## Cobble Beach



Walking time Allow 5 minutes each way (from top of stairs)  
Notes Steep stairs

If conditions are right, listen to the water rushing into shore, tossing and jumbling cobble stones – one of the most unusual sounds you'll hear at a beach.



### No cobble collecting

It took 14 million years to build this cobble beach – from boiling hot lava to eroded fragments. What do you think would happen if each of the hundreds of thousands of visitors to Yaquina Head took just one cobble? Soon this special beach would disappear. Take care - the cobbles can make walking difficult.

## Salal Hill Trail



*Walking time* Allow 12 minutes each way

*Rating* Moderate

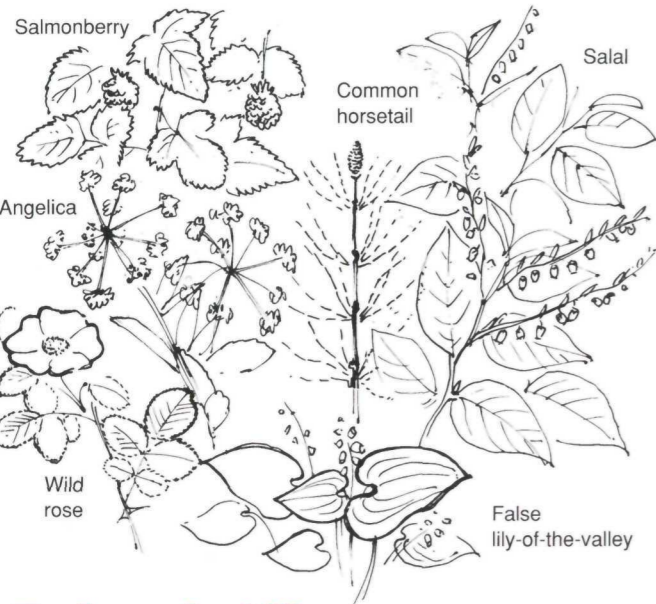
*Steepest grade* 36%

*Notes* Stairs at base of trail

*Trail surface* Unimproved

This relatively short but steep trail makes switch-backs to the top. Along the trail and from the top of “the big hill” are some of the best views around – south to Newport, out to the Pacific, and the forests to the east.

In the springtime, look for wildflowers in bloom.



### Tank on the hill

The 33,000 gallon (125,000 liter) water tank on the west face of Salal Hill held precious spring water for household use and fire protection at the lighthouse. It was built in 1926.

Caution: There are dangerous cliffs in places near the trail.

## Communications Hill Trail



*Walking time* Allow 15 minutes each way

*Rating* Moderate

*Steepest grade* 15%

*Trail surface* Gravel road

A walk up Communications Hill presents a completely different community – a shore pine and Sitka spruce forest. Chipmunks, chickadees, and wrens are fairly common.

The Coast Guard maintains navigation communications equipment on top of the hill.



## Quarry Cove Trail



*Walking time* Allow 10 minutes each way

*Rating* Moderate

*Steepest grade* 33%

*Notes* Some concrete steps

*Trail surface* Asphalt / gravel

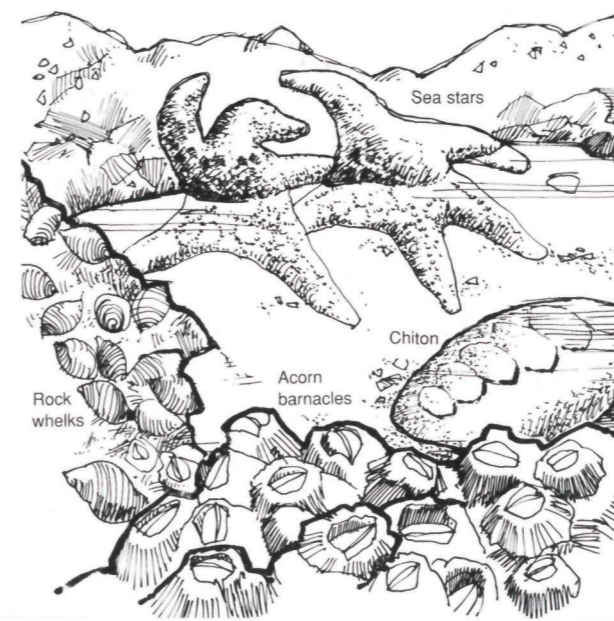


See a BLM employee if you need assistance to get to the Quarry Cove Tide Pools Trail. It is accessible, but Quarry Cove Trail is not.

Following the crest of Yaquina Head’s southern edge, this trail connects the Ocean Bluff Observation Area and Quarry Cove. You’ll have terrific views south to Agate and Nye Beaches.

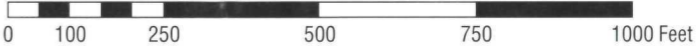
### Quarry Cove Tide Pools Trail (trail within the intertidal)

Low tide is the best time to walk this trail through Quarry Cove, a unique rocky intertidal area built (1992-94) by the BLM from a former rock quarry. See how many plants and animals you can find. This trail is wheelchair accessible, but may be *slippery*.



Notice too the formation of the basalt cliff behind the intertidal. Fourteen million years ago, flowing lava created Yaquina Head. Columns of basalt formed as the lava cooled, and the new land took shape. Look for different features on the rock behind the tide pools.

# Yaquina Head Outstanding Natural Area



- Viewpoints for Watchable Wildlife:**
- Viewpoints for Watchable Wildlife:
  - Whales
  - Seals
  - Seabirds
  - Intertidal life
  - Parking
  - Restrooms

Colony Rock



Lighthouse



Cobble Beach Stairway



Cobble Beach



Salal Hill Trail



Salal Hill



Interpretive Center



Quarry Cove Trail

Quarry Cove Intertidal Area

Quarry Cove Tide Pools Trail



Communications Hill Trail

Communications Hill



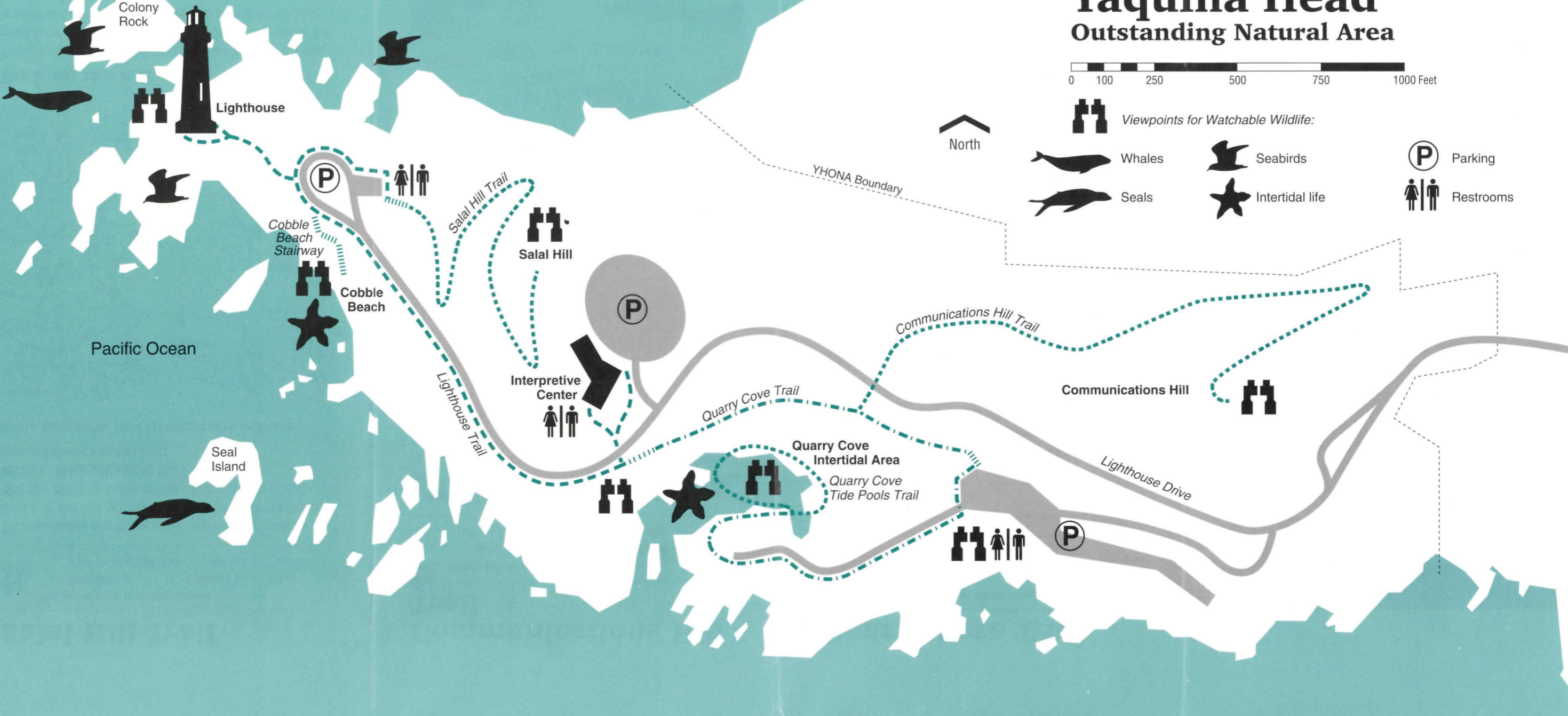
Lighthouse Drive



Pacific Ocean

Seal Island

YHONA Boundary



## Watchable wildlife

The secret of wildlife viewing – whether it be for whales, birds or butterflies – is patience and timing. Whales may only appear for a few seconds at a time; birds fly by at high speed.

The best strategy to see the most is to pick the best time of day (low tide for intertidal organisms and shorebirds), then pick a good location and wait.

Many shy creatures will reappear when they are convinced that there is no danger.

## Gray whales

The best time to see migrating gray whales is from December through May. In most of the last several years, a few whales have lived in the near-shore waters here during the summer and fall.



## Seabirds and shorebirds

Seabirds and shorebirds are at Yaquina Head year-round, but are most common during the spring and summer nesting period. They begin arriving in numbers in March.



Black oystercatcher

To help identify birds you might see, look for the 'starwheel' on the Lighthouse deck.

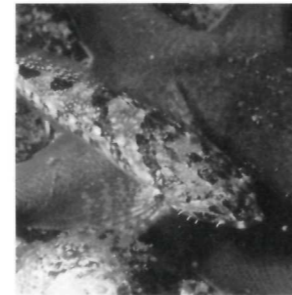


## Harbor seals are protected

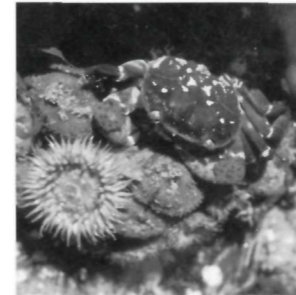
You can often see harbor seals on Seal Island, but don't get too close or you'll just scare them away.

Harbor seals and other marine mammals are protected under the Marine Mammals Protection Act. It is illegal to interfere with young seals as it may prevent the reunion of pups with their mothers.

A tide pool with sea stars and sea urchins



Tidepool sculpin



Shore crab

## Intertidal life

In the tide pools, look for green sea anemones.

Notice too the formation of the basalt cliff behind the intertidal area.

## Yaquina Head Interpretive Center

Exhibits interpret human and natural history at Yaquina Head. Enjoy our recreated rocky island, lighthouse 'stage sets,' replicated lantern, special A/V presentation and sound stations with selected sounds from the headland.

