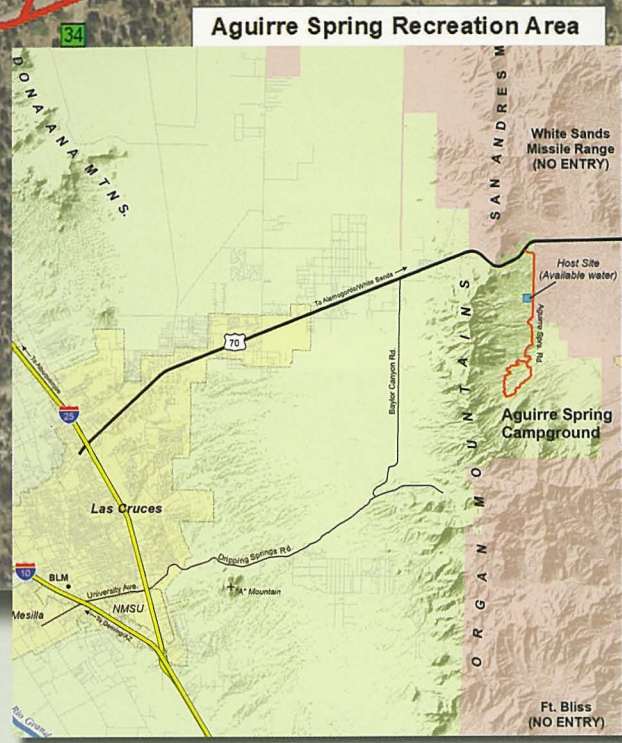
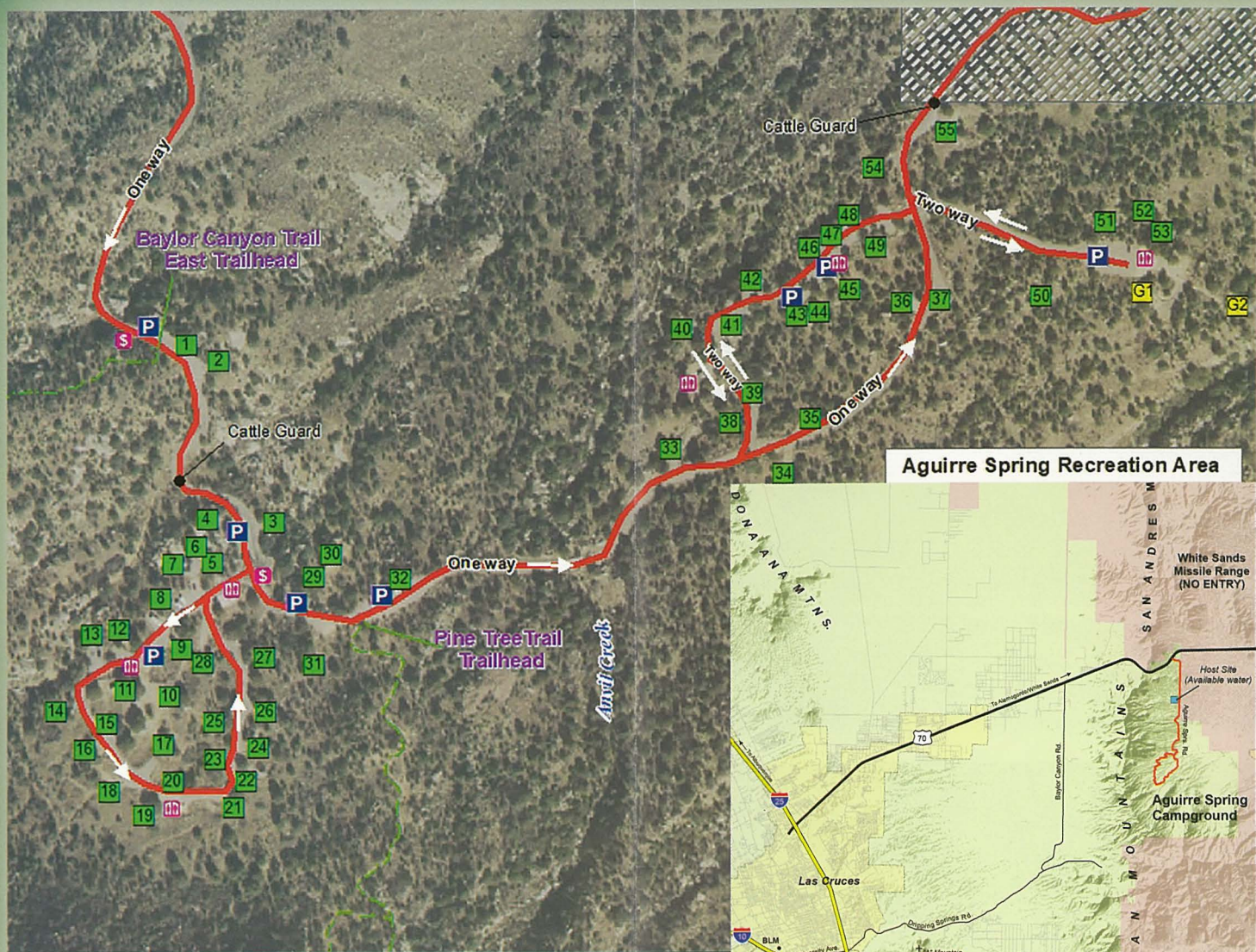




NATIONAL CONSERVATION LANDS

Aguirre Spring Recreation Area

Organ Mountains - Desert Peaks National Monument



Directions

Aguirre Spring Recreation Area is located on the east side of the Organ Mountains, east of Las Cruces in Doña Ana County. Take U.S. 70 for 14 miles east of the I-25/U.S. 70 interchange in Las Cruces, then turn south on the Aguirre Spring Road (1.1 miles after San Augustine Pass) for six miles. At mile 4, the road becomes a one-way loop and climbs steeply.

Site Hours

Winter hours 8 a.m to 6 p.m.
Summer hours 8 a.m. to 8 p.m.

Due to narrow, winding roads, RVs longer than 23 feet are not recommended.

Bureau of Land Management
Las Cruces District Office
1800 Marquess Street
Las Cruces, NM 88005-3371
575-525-4300
or
www.blm.gov/new-mexico

In case of emergency:
Immediate Emergency – 911
BLM 24-hour Dispatch – 1-800-637-9152

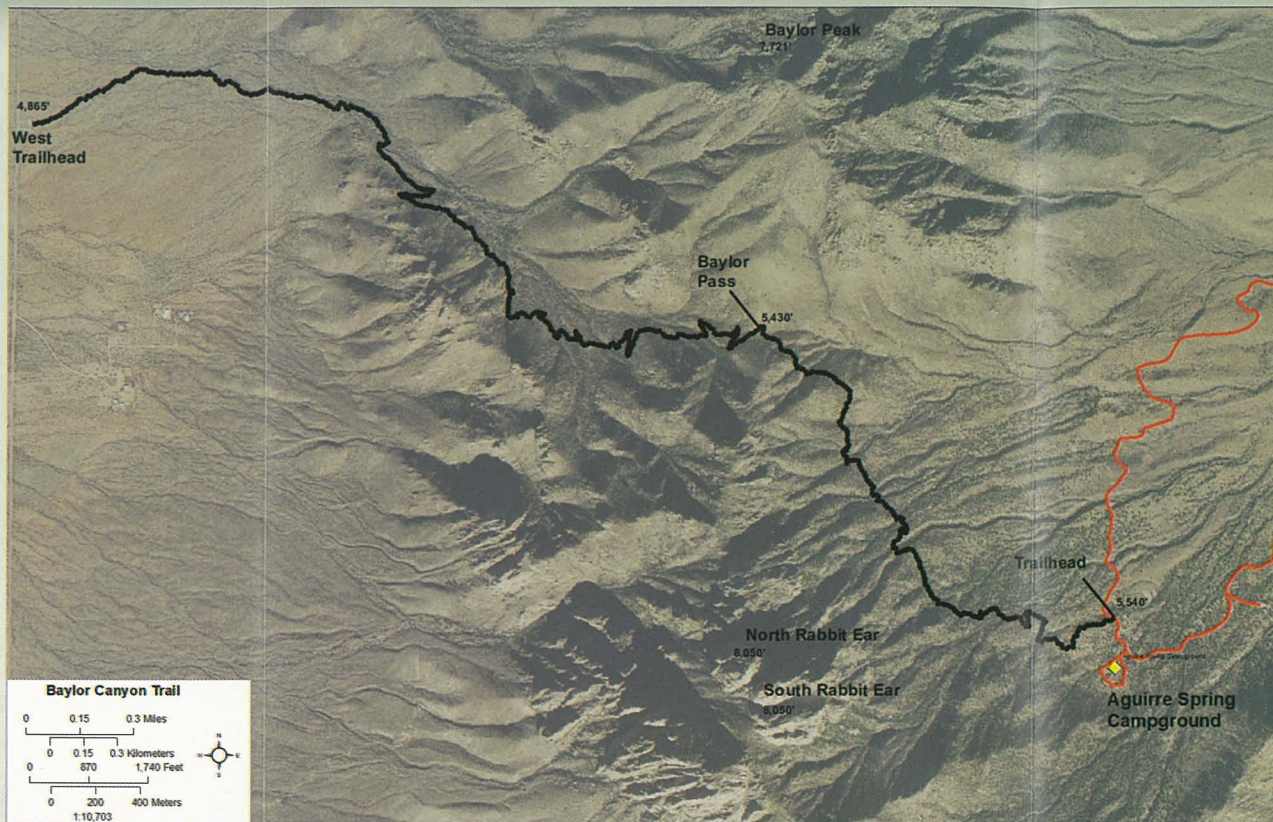
Welcome to Aguirre Spring Recreation Area. To the west of Aguirre Spring Recreation Area is the Organ Mountains Wilderness Area. In both law and fact, wilderness is meant to be multiple-use. Thus, most activities are still allowed, including photography, bird watching, backpacking, climbing, hiking, camping, horseback riding, and hunting. Motorized transportation and bikes are not allowed in wilderness. Please keep this in mind as you recreate in the Organ Mountains Wilderness Area.

Aguirre Spring Recreation Area is located on the east side of the Organ Mountains. At nearly 5,000 feet, it is the highest elevation of any campground in the Las Cruces/El Paso/Juarez region, where cooler summer temperatures and remarkable vistas make it a regional attraction.

From the campground, visitors can see the high, needle-like cliff spires of the Organ Mountains that curve dramatically around a semicircle of Chihuahuan Desert mountain habitat. The facility also overlooks the Tularosa Basin, home to White Sands National Park and White Sands Missile Range. Alligator juniper, gray oak, mountain mahogany, and sotol are a few of the plant species present. Seasonal springs and streams occur in the canyon bottoms, as well as a few perennial springs that support riparian habitats.



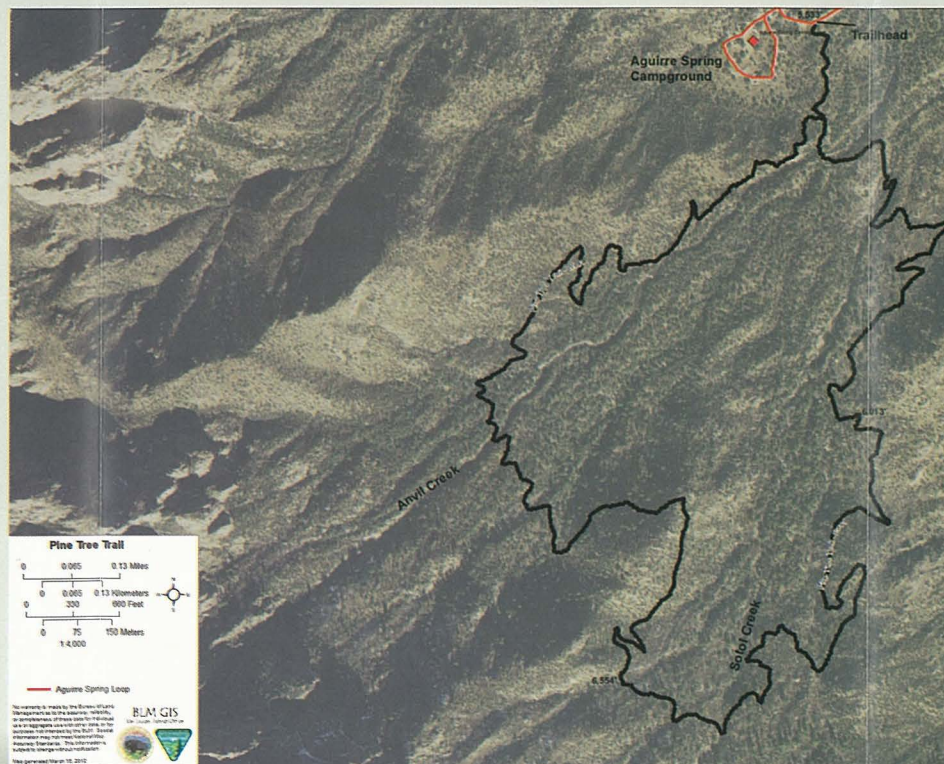
Aguirre Springs Campground



Area Activities

Activities that draw the public to this site are primarily camping, picnicking, hiking, and sightseeing. Aguirre Spring Recreation Area includes 55 first come, first-served campsites. There are also two group sites that can be reserved. For group reservations, please call 575-525-4300.

The campground includes pit toilets, picnic tables, fire rings, as well as the Baylor Canyon and Pine Tree Trailheads. Water is only available at the entrance to the Recreation Area near the Camp Host Site. Leashed pets are allowed in the Recreation Area. RVs longer than 23 feet will not make it up the road to the Recreation Area due to narrow, winding roads.



Hiking Notes

Pine Tree Trail

This national recreation trail is a wooded hard-packed four-mile trail (elevation gain: 1,040 feet) which features a wide variety of plant species and trees not seen on the desert floor.

Baylor Canyon Trail

Hike from either Baylor Canyon Road on the west or Aguirre Spring on the east. From the west, it is a four-mile hike to the saddle at the top (elevation gain: 1,500 feet) and a two-mile hike down to Aguirre Spring (elevation drop: 700 feet). To hike the six miles one way in either direction, most visitors park vehicles on both sides of the mountain or arrange a pick-up.

The Baylor Canyon Trailhead allows fee-free access to hike Baylor Canyon Trail. The Aguirre Spring side requires a \$5 day-use fee.