

# WELCOME

The Bureau of Land Management welcomes you to *your* public lands. These lands are managed to provide diverse benefits to the public. On BLM lands you'll find opportunities to hike, camp, hunt and fish. This map is one of four that cover the fishing opportunities throughout Wyoming.

This area of Wyoming offers many trout fisheries and hosts over a dozen species of game fish. In this area you'll find a variety of trout including rainbow, brown, lake, brook and cutthroat, as well as splake, walleye, channel catfish, perch, largemouth and smallmouth bass. Numerous mountain lakes and streams in the Bighorn Range offer additional trout fishing opportunities. One of BLM's sensitive species, Yellowstone cutthroat trout, is also found in this region.

## FISH WYOMING

## PUBLIC FISHING OPPORTUNITIES Northeast and Central WYOMING



Photo courtesy WGFD

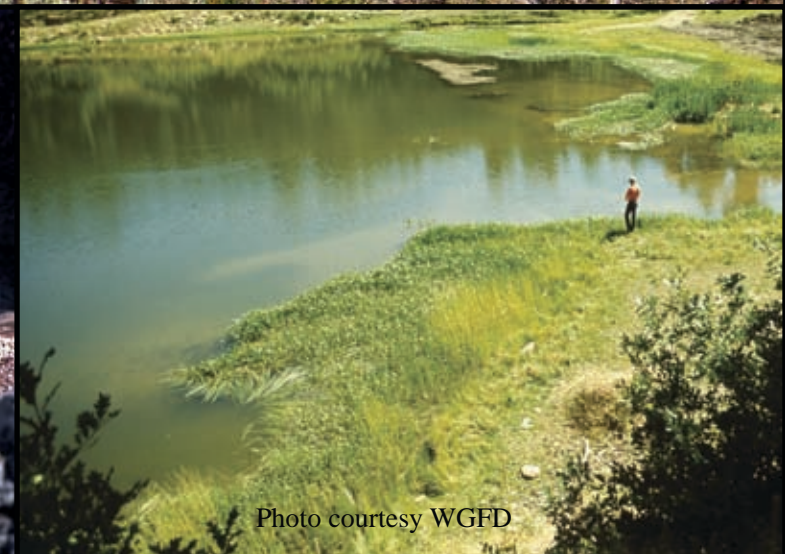


Photo courtesy WGFD

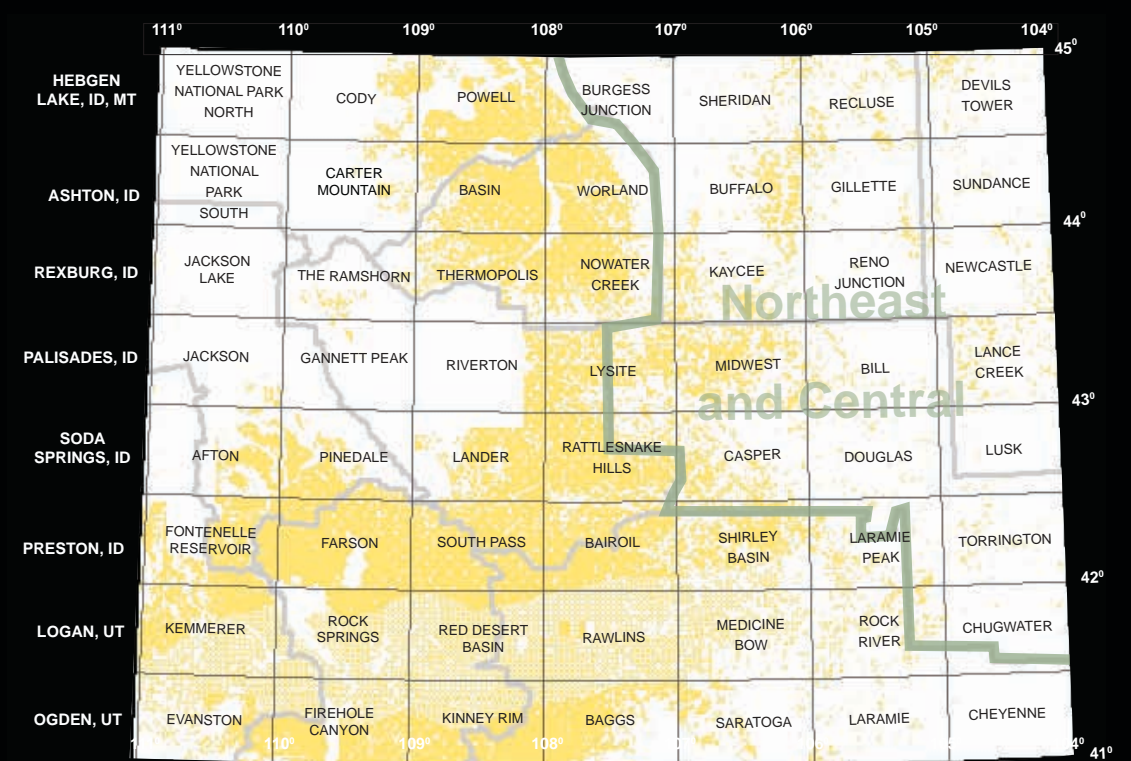


Photo courtesy WGFD

## Map Information

This map shows fishing access points in the northeast and central portions of Wyoming. Refer to the other three maps for fishing opportunities throughout the state.

The BLM field offices in Buffalo, Casper and Newcastle have topographic maps available for a nominal fee. The maps show land ownership by section at a scale of 1:100,000.



BLM administered public lands

## Fishing Ethics

### Private land:

- Be courteous to private landowners.
- Leave all gates as you find them.
- Obtain permission if you intend to build a fire, clear brush or drive off the road.

### Catch and Release:

- If you plan to release a catch, return it to the water immediately, with as little contact as possible.
- Don't return a fish to the water if it's been stringered or creel.
- Cut the line at the mouth if the hook is difficult to remove. It will degrade naturally without harming the fish.

### Camping:

- Camp away from watering facilities used by wildlife and livestock.
- Pack all your trash out with you.
- Keep your campfire small.
- Make sure the fire is completely out before leaving the site.

### Prevent the spread of invasive species:

- Invasive species are species that were removed from their native habitat and introduced either intentionally or unintentionally to a new ecosystem. Some of these species may have an ecological advantage over the native species and could disrupt the balance of the ecosystem. In Wyoming, the common carp, New Zealand mudsnail, and the whirling disease parasite have already disrupted many ecosystems. Everyone must take responsibility to ensure these species and others are not spread to even more areas. To prevent their spread:
  - Remove all visible mud, plants, fish, and other animals from your equipment.
  - Eliminate all water from equipment before you depart.
  - Clean and dry anything that came in contact with the water.
  - Do not release plants, fish, or other animals into a water body unless they came from that water body.
  - Avoid transferring anything wet (especially waders, boots, gear) from stream to stream.



Photo courtesy WGFD



**NO POACHING!**  
Report any fishing violations by calling this 24 hour toll free number: 1-800-442-4331



### Field Offices

<p><b>BLM</b> www.blm.gov/wy</p> <p><b>Buffalo Field Office</b> 1425 Fort Street Buffalo, WY 82834 (307) 684-1100</p> <p><b>Casper Field Office</b> 2987 Prospector Drive Casper, WY 82604 (307) 267-7600</p> <p><b>Newcastle Field Office</b> 1101 Washington Blvd. Newcastle, WY 82701 (307) 746-6600</p>	<p><b>WGFD</b> www.gf.state.wy.us</p> <p><b>Casper Regional Office</b> 3030 Energy Lane, Suite 100 Casper, WY 82604 (307) 473-3400</p> <p><b>Sheridan Regional Office</b> 700 Valley View Drive Sheridan, WY 82801 (307) 672-7418</p> <p><b>Tribal Fish and Game Department</b> (307) 332-7207</p>
---	--

## License Requirements

- Fishing licenses are required for resident and non-resident anglers 14 years or older.
- Non-residents under 14 may need a license.
- Every licensee must have a conservation stamp. Daily licenses are exempt.
- A Free Fishing Day is held statewide every year on the first Saturday in June – no license or conservation stamp is required on this day.
- Refer to current Wyoming Fishing Regulations produced by the Wyoming Game and Fish Department for general rules, creel limits, fishing seasons, restrictions and exceptions to general provisions.

## Safety

- Leave a copy of your trip itinerary with someone.
- Be prepared with clothing for all weather conditions. Wyoming weather varies widely on any given day.
- Bring high-energy food.
- Bring plenty of drinking water.
- Keep your vehicle well-maintained, carry extra fuel and tools, and make sure the spare tire is in good condition.
- Bring a first-aid kit.

## Public Access

- Public lands can only be accessed by public roads or on routes with public easements.
- All federally administered public lands intersected by a public road may be used free of charge excluding fee areas.
- Public lands surrounded by private land may only be used with permission from the private landowner.
- Be sure to determine how to access the public land well in advance of your trip.
- Remember, in Wyoming, the edges and bottoms of bodies of water can be privately owned. In those places, don't walk or wade the shoreline to avoid obtaining permission to cross to public lands.
- Some lands along the North Platte River can only be accessed by floating down the river. There are metal signs along the North Platte which identify public land. Floaters will see blue signs as they enter public land and red signs as they leave public land.
- When in doubt, ask for permission!

## Private Land

- Abide by Wyoming state law and always obtain permission before fishing on or crossing private lands.
- Remember, using private lands is a privilege granted only by the landowner.
- If permission is granted then be as responsible and courteous on the private land as you would be on public land.

## Disabled Anglers

- Several fishing sites have unrestricted access for disabled anglers. Check the map on the reverse side for specific locations.



Photo courtesy WGFD



Photo courtesy WGFD



## Leaders in Fish Habitat Conservation

Photo courtesy WGFD

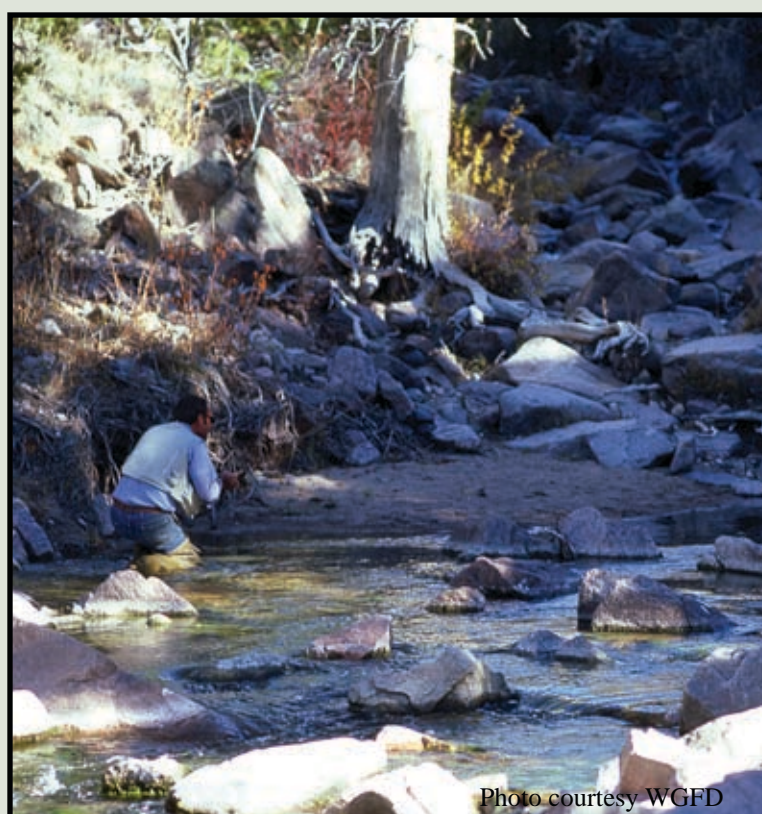


Photo courtesy WGFD

## Other Reference Materials

- WGFD**
- Fishing Regulations: Wyoming Game and Fish Commission
  - Wyoming Fishing Guide
  - Wyoming Boating Guide



- BLM**
- Public Land Access
  - Go to BLM's recreation Web page for interactive fishing maps: <http://www.blm.gov/wy/st/en/programs/Recreation/fishing.html>

- Wyoming Travel and Tourism**
- Public Lands Recreation Opportunities

This map was developed by the Bureau of Land Management in cooperation with the Wyoming Game and Fish Department.



## Where they are

## What's there

- Tongue River at Welch Area
- Tongue River
- Lake DeSmet
- Healy Reservoir
- Clear Creek
- Muddy Guard Reservoir # 1 & 2
- East Slope Bighorn Lakes
- Poison Creek
- Dull Knife Reservoir
- Bear Trap Creek
- Blue Creek
- Middle Fork of the Powder River
- Buffalo Creek
- Reservoirs North of Casper
- Goldeneye Reservoir
- Pathfinder Reservoir
- Alcova Reservoir
- North Platte River at Grey Reef
- North Platte River at Lusby
- North Platte River at Bolton Creek
- North Platte River at Miles Landing
- North Platte River at By the Way
- North Platte River at Clarkson Hill
- North Platte River at Sechrist
- North Platte River at The Narrows
- North Platte River at Bessemer Bend Historic Site
- North Platte River at Robertson Road
- North Platte River at Edness Kimball Wilkins State Park
- North Platte River at Big Muddy Ridge
- North Platte River at Monkey Hill Bridge
- North Platte River at Pacific Power and Light Power Plant (Dave Johnson)
- North Platte River at Pacific Power and Light
- North Platte River at Bixby
- North Platte River at City of Douglas
- North Platte River at Wyoming Game and Fish Department
- Glendo Reservoir
- North Platte River at Glendo Dam
- North Platte River at Wendover
- Guernsey Reservoir (Not managed as a fishery)
- Guernsey Reservoir to Nebraska Line (Not managed as a fishery)
- Joe Johnson Reservoir
- Rock Lake
- Grayrocks Reservoir
- Packers Lake
- Hawk Springs Reservoir
- McMaster Reservoir
- MW Reservoir
- LAK Reservoir
- Black Hills Power and Light Reservoir
- CB and Q Reservoir
- Cold Springs Creek
- Sand Creek
- Cook Lake
- Belle Fourche River
- Gillette Lake
- Weston Fish Pond

Several reservoirs are located on public lands along the 33-Mile Stock Driveway. These trout-stocked reservoirs can have good water and excellent fishing in some years, but can be nearly dry in other years.

## How to get there

- From Sheridan go north 9 miles on WY 338 to the bridge on Tongue River.
- Access from Dayton; south Tongue River access from US 14; north Tongue access from US 14A.
- Access from I-90, 5 miles north of Buffalo.
- 5 miles east of Buffalo on US 16.
- 3 miles west of Buffalo on US 16.
- From Buffalo, south on US 87 for 10.7 miles to Crazy Woman Rd.
- Access from US 16 or US 14 on Bighorn National Forest. Contact USFS at (307) 684-7981.
- Go 25 miles southwest of Buffalo on US 16, to Hazelton Rd., then .7 miles to Billy Creek Rd. then southeast for 6.8 miles to parking area.
- 9 miles south of US 16 on Hazelton Mountain Rd.
- On Hazelton Mountain Rd., 15 miles south of US 16.
- From Kaycee, go 15 miles west on WY 190 to Barnum, then 1 mile southwest on Bar C Rd. to fishing access sign on Blue Creek.
- From Kaycee, go 15 miles west on WY 190 to Barnum, then 6 miles southwest on Bar C Rd. to interpretive sign, then west on Outlaw Cave Rd. to campground. Foot travel down trail to river.
- Access from 33-Mile/Willow Creek Co. Rd. junction, east on Willow Creek Rd. for .5 miles, then north 5 miles to Buffalo Creek Canyon; foot travel into Buffalo Creek Canyon.
- From Casper, go 14 miles northwest on US 20/26, then north on Co Rd. 125 (Bucknam Rd.) for 10 miles to Co. Rd. 110 (33-Mile Rd.), go 3 miles to public land. Access to reservoirs is off Co. Rd. 110 for the next 11 miles. Ask at the Casper BLM or WGFD offices.
- Northwest of Casper on US 20/26 for 19 miles, then 1 mile north on the Goldeneye Rd.
- 6 miles west of Alcova on WY 220, then 7 miles south on Pathfinder Rd.
- West of Alcova on WY 220 for 2 miles, then 2 miles south on Lakeshore Drive.
- Go southwest of Casper on WY 220 for 30 miles, then .5 miles southeast on Co. Rd. 412.
- Southwest of Casper on WY 220 for 24 miles, then 2 miles south on WGFD graded road.
- Go southwest of Casper on WY 220 for 20 miles, then 1 mile southeast on Co. Rd. 404.
- Go southwest of Casper on WY 220 for 20 miles, parking area is at northeast end of bridge.
- Access 18 miles southwest of Casper on WY 220, then 1.25 miles north on Co. Rd. 316.
- Southwest of Casper on WY 220 for 21 miles, then 2 miles north on Co. Rd. 361.
- From Casper on WY 220 go 15 miles, then .25 miles north on WGFD graded road.
- Parking area is 14 miles southwest of Casper on WY 220 north of highway.
- 10 miles southwest of Casper on WY 220, then 2.5 miles northwest on Co. Rd. 308.
- Access 6 miles southwest of Casper on WY 220, then 2 miles north on Robertson Rd.
- East of Casper on US 20/26 for 6 miles.
- 12 miles east of Casper on US 20/26, then .5 miles north on Cole Creek Rd.
- Travel north of Glenrock on WY 95 for 1 mile.
- Go 5 miles east of Glenrock on US 20/26, then 1 mile east on Co. Rd. 27 immediately downstream of the power plant.
- From Glenrock, east on US 20/26 for 5 miles, then 3 miles east on Co. Rd. 27.
- East of Glenrock on U.S. 20/26 for 5 miles, then 7 miles east on Co. Rd. 27.
- In Douglas at West Yellowstone Street Bridge.
- Four sites: Access 1.5 miles west of Douglas on U.S. 20/26, then 4 to 8 miles south on WY 94.
- Access 4.5 miles southeast of Glendo on Glendo Park Rd.
- Access 5.5 miles southeast of Glendo on Glendo Park Rd., then 1 mile south on Power Plant Rd., then 2 miles east on WGFD trail.
- West of Guernsey on US 26 for 3 miles, then 8.5 miles northwest on Wendover Rd.
- 3 miles west of Guernsey on US 26, then 1 mile north on WY 317 to fee entrance.
- Various access points. Ask locally.
- North of Wheatland on I-25 for 6.5 miles, then .5 miles east on Co. Rd. 47.
- South of Wheatland on I-25 for 6 miles, then 4 miles west on WY 34. Go 2 miles north on Co. Rd. 151, then 1/4 mile west on WGFD graded road.
- North of Wheatland 1 mile on I-25, then 1/2 mile east on Laramie River Rd., then 2 miles north on WY 320, then .25 miles east on Co. Rd. 67.
- 1.25 miles south of Lyman, northeast on Co. Rd. 79C, then .25 mile west on a dirt road.
- Access 5 miles south of Hawk Springs on US 85, then 3.5 miles east on Co. Rd. 186.
- East of Lusk on US 20 for 15 miles.
- South of Newcastle on old US 85 for 25 miles.
- From Newcastle, 5 miles east on US 16, then .5 miles north on Beaver Creek Rd.
- 1 mile east of Osage; north of power plant.
- From Upton, 3 miles north on US 16.
- North of Newcastle on US 85 for 25 miles.
- South of Beulah on Sand Creek Co. Rd. for 5 miles.
- 13 miles north of Sundance on USFS Rd. 838 and USFS Rd. 843.
- Access at Keyhole Reservoir.
- Access 10 miles northeast of Moorcroft on US 14 and Pine Haven Rd.
- Access southeast of I-90 in Gillette on WY 59 for 2 miles, then east into parking area.
- North of Gillette on WY 59 for 24 miles, then left 1 mile on Weston Rd.

