

these colorful and best known of southwestern Indians "at home"—farming and herding flocks of sheep and goats.

### Administration

Canyon de Chelly National Monument is administered by the National Park Service, Department of the Interior, through the office of the Superintendent of Southwestern National Monuments, Coolidge, Arizona. The monument has an area of 83,840 acres and its establishment was authorized by the Congress on February 14, 1931.

A custodian resides near the mouth of the canyon. Inquiries concerning road conditions, accommodations, etc., should be addressed to the Custodian, Canyon de Chelly National Monument, Chinle, Ariz.,

### Approach Road and Facilities

The only feasible means of approach to the monument is from U. S. Highway 66. Visitors from the east should turn off at Gallup, N. Mex., and travel by way of Ganado, Ariz., to Chinle. From the west a road runs from Cham-

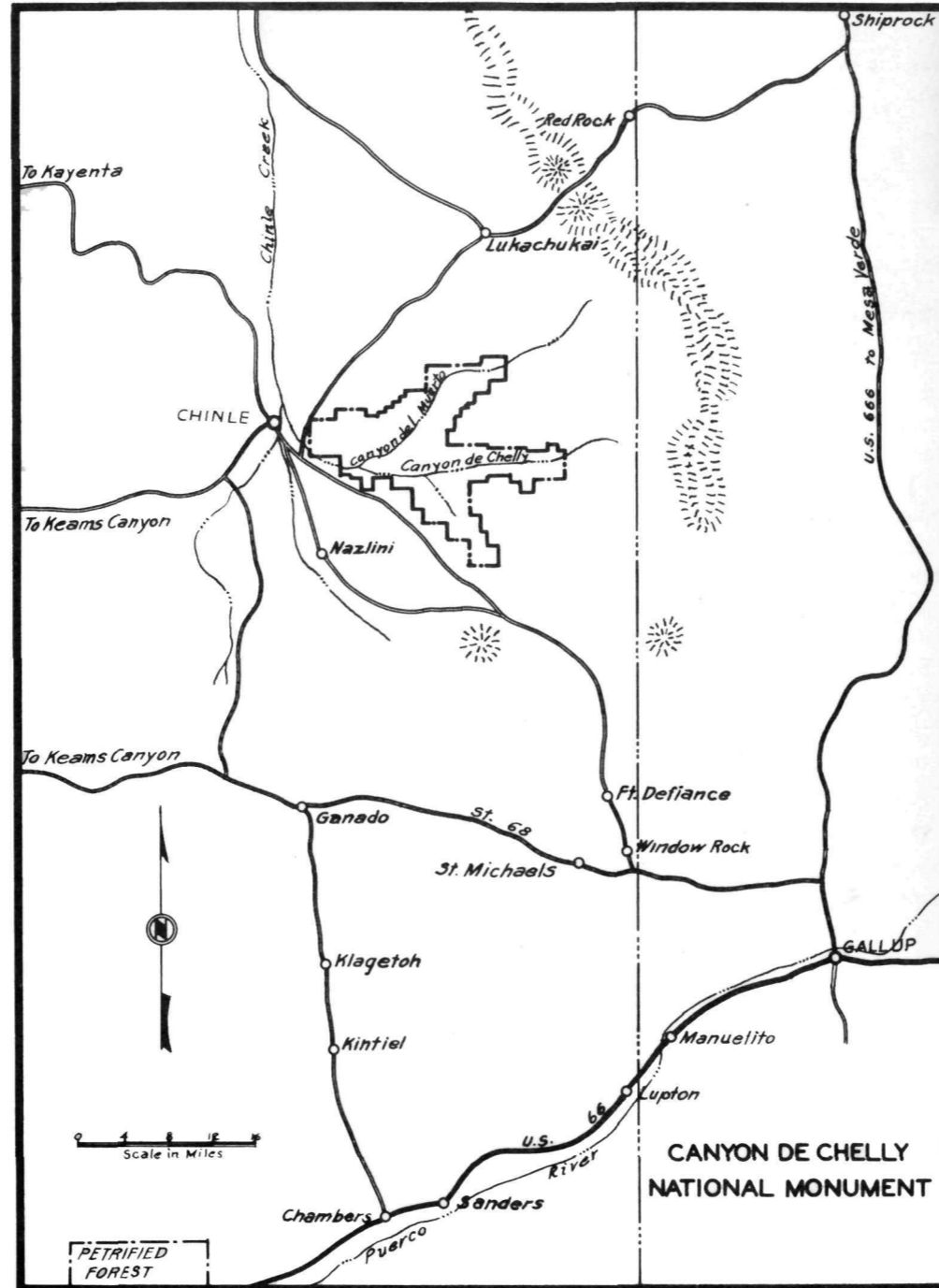
bers, Ariz. to Ganado, to Chinle. Inquiry should be made concerning road conditions before leaving the highway; in bad weather the roads are sometimes impassable.

Accommodations may be had at Thunderbird Ranch, a guest ranch, which is located across the road from the custodian's residence and office. The operator of Thunderbird Ranch maintains a car especially equipped for canyon travel. This car can be rented for trips.

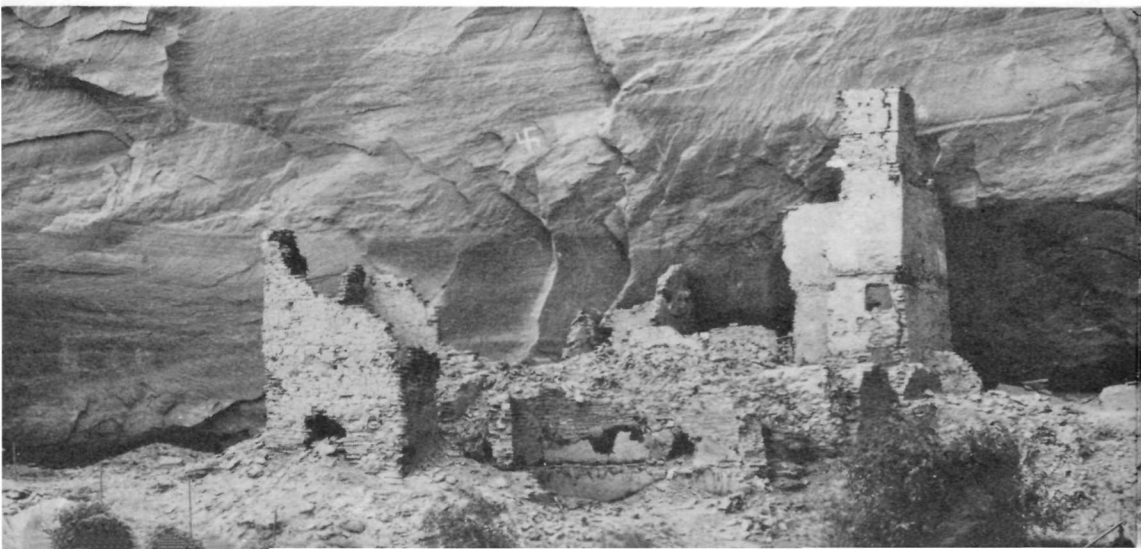
### Rules and Regulations

Visitors are requested to observe the following rules:

1. Do not walk on ruin walls, pick up any souvenir, make any marks or initials on either canyon or ruin walls.
2. Do not enter any hogan or take any pictures of Indians without their consent and that of the ranger in charge of the party.
3. Do not enter the canyons unless accompanied by National Park Service employee or other authorized guide.



Antelope House



# CANYON DE CHELLE

*National Monument*

**ARIZONA**

