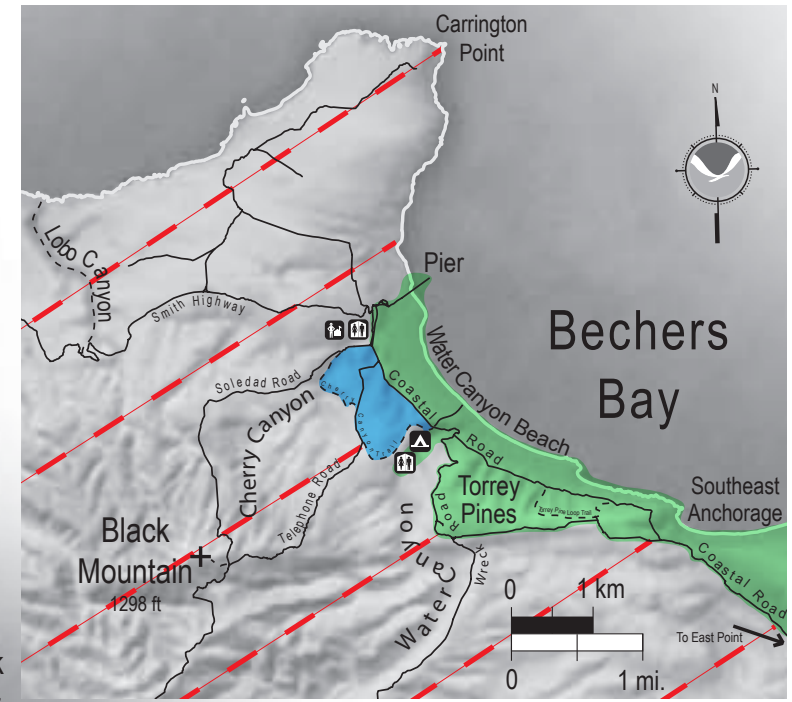








# Public Closure

Hunt Management Area: August 26, 2008 - December 15, 2008  
Wildlife Protection Area: Sandy Point, year-round; Skunk Point, March 1 - Sept 15



-  **ROADS**       **TRAILS**
-  **CLOSED TO PUBLIC (Hunt Management Area)**  
To ensure visitor safety this area is closed during hunt operations from August 26, 2008 through December 15, 2008. Guided ranger hikes may occur to Lobo Canyon during this period. Access through this closed area is allowed for permitted backcountry beach campers. See backcountry camping bulletin for more information.
-  **PUBLIC ACCESS AREA:**  
**Visitor access unrestricted in this area.**  
From August 26, 2008 through December 15, 2008, hiking is limited to the public access area. This area includes the campground, Water Canyon beach, Torrey Pine forest, East Point road from the campground to East Point, and all areas north of East Point road.
-  **DAY USE ONLY (FROM 8 AM - 5 PM)**  
From August 26, 2008 through December 15, 2008, this area (Cherry Canyon trail from the Soledad Rd. trailhead to the campground trailhead) is open to hiking from 8 am until 5 pm. After 5 pm this area is closed due to hunting operations. All visitors must be out of this area by 5 pm.
-  **CLOSED TO PUBLIC (Wildlife Protection Area)**  
The coastline from and including Skunk Point to just before East Point is closed to landing and hiking from March 1 to September 15 to protect the nesting area for the threatened snowy plover. The coastline around area for the threatened snowy plover. The coastline around area for the threatened snowy plover. The coastline around area for the threatened snowy plover.