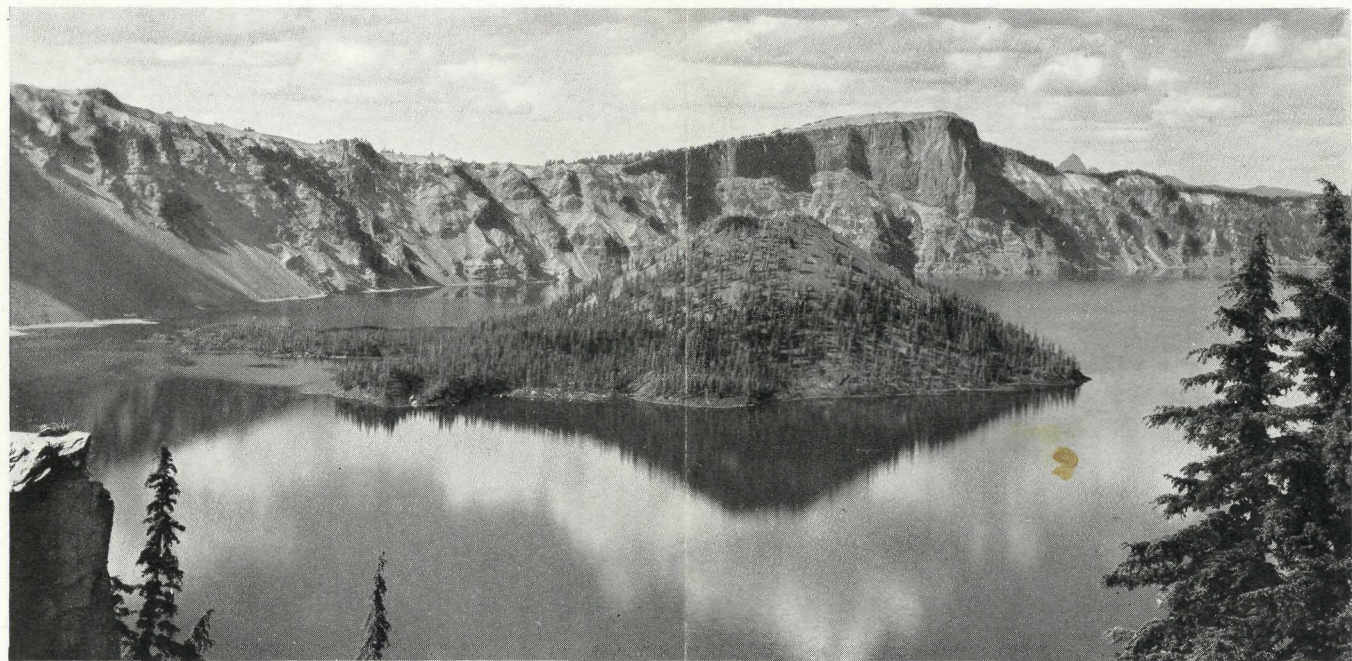
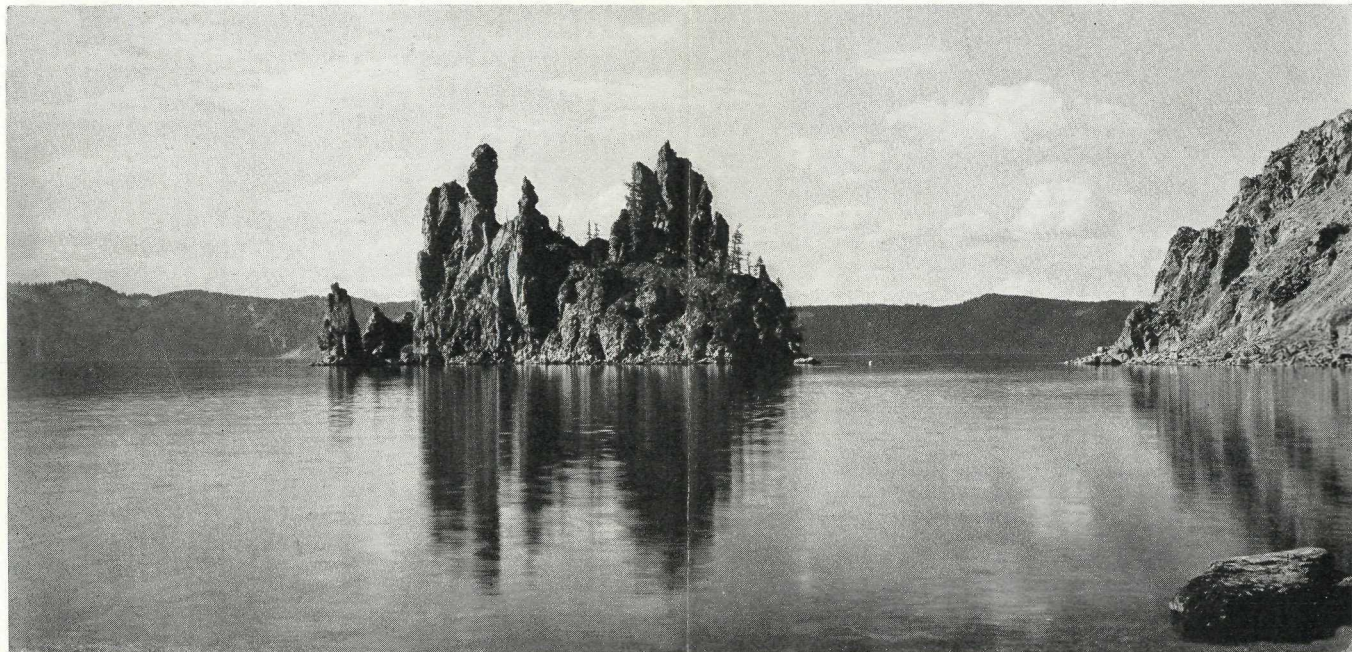


# CRATER CRATER LAKE LAKE

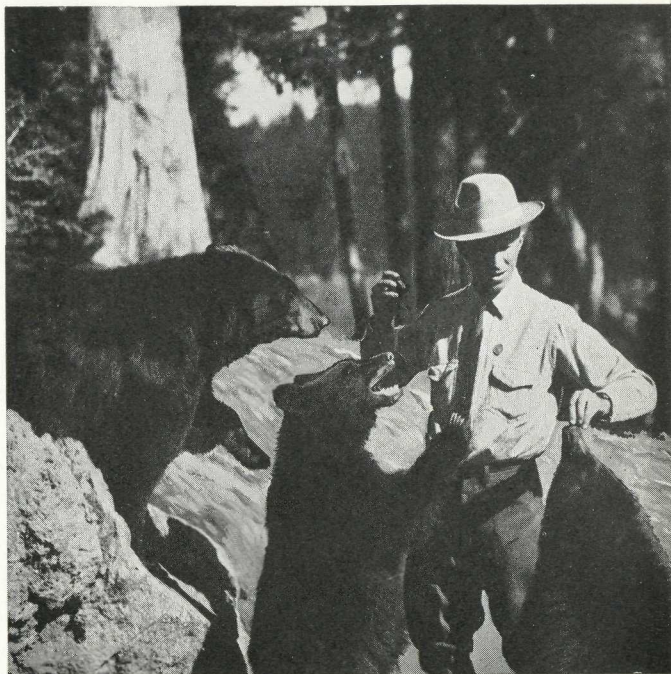


**Crater Lake Nat'l. Park Co. ~ Southern Pacific**

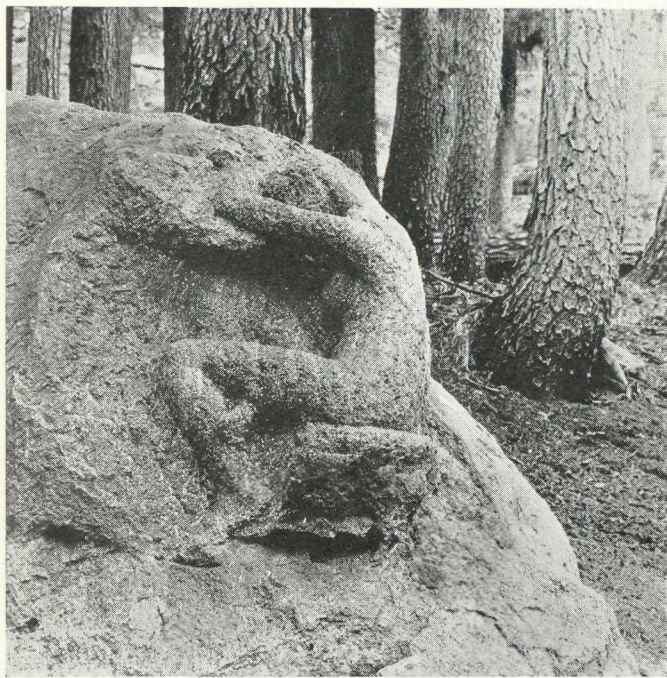
CRATER LAKE NATIONAL PARK—ON SHASTA ROUTE OF SOUTHERN PACIFIC



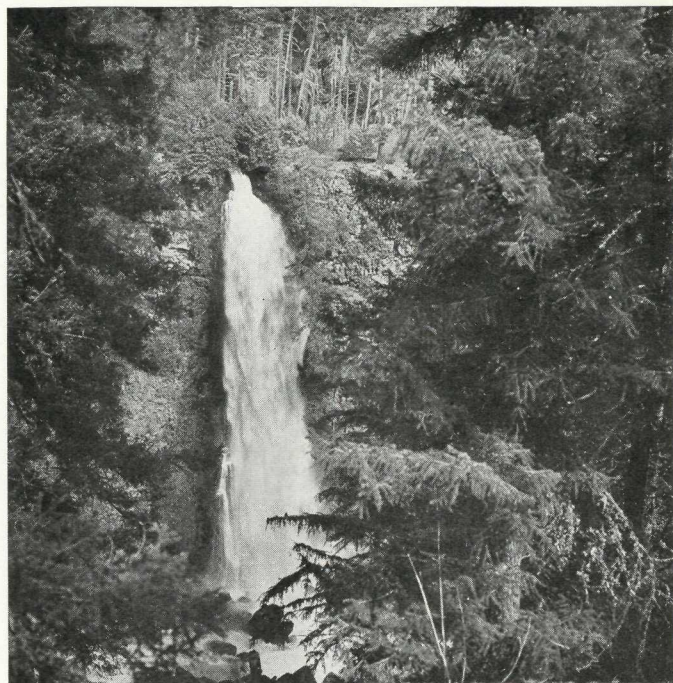
*Above—Phantom Ship, one of Crater Lake's grotesque rock formations. Below—Wizard Island, as seen from the rim of Crater Lake at a point just west of Crater Lake Lodge. Directly behind Wizard Island, on the opposite shore of the Lake, is Llao Rock.*



*They won't hurt you! Bears in Crater Lake National Park are harmless and friendly; they have grown fond of visitors and the dainties they bring to them. Game in the national parks is protected from hunters.*



*Mysterious rock-hewn "Lady of the Woods"—remarkable carved figure, life-size, and hewn in bold relief from volcanic rock, discovered some years ago in a wooded glen close to Crater Lake.*



*Mill Creek Falls, near Prospect, on the road between Medford and Crater Lake. The route to Crater Lake National Park from the Medford gateway is along the Rogue River, via Rogue, Elk and Prospect.*



*Pinnacles in the "Garden of the Gods" in Anna Creek Canyon. They are directly on the road, and are seen by the traveler who takes either the Chiloquin or Klamath Falls gateway to the Park.*

In Southern Oregon, 60 miles north of California, stands the broken remnant of a once mighty mountain. In its ancient crater bowl lies one of the world's scenic wonders—a lake whose romantic setting and bewitching coloring are unduplicated anywhere.

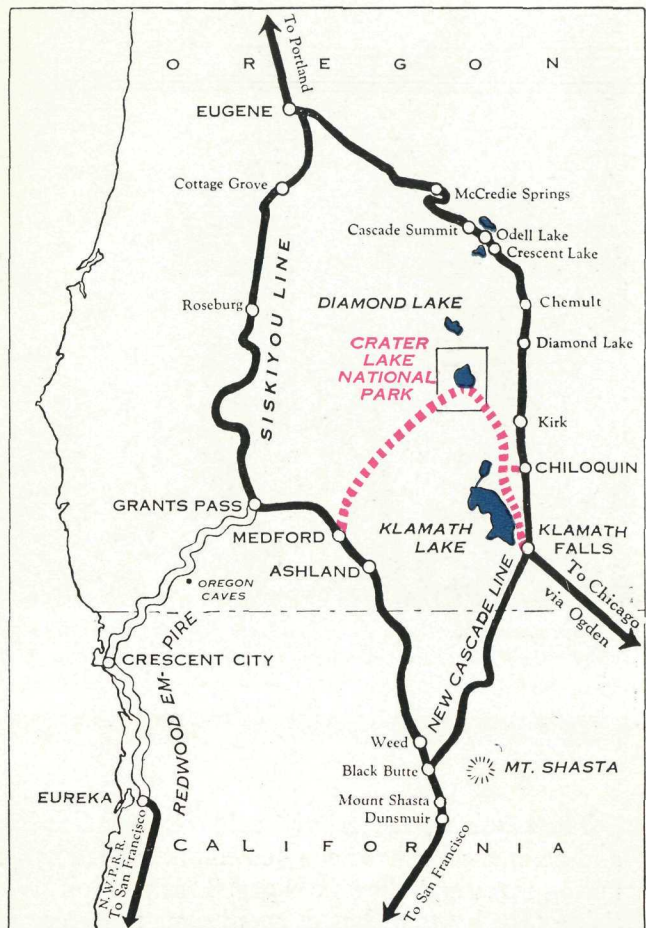
**T**HIS broken mountain itself is still lofty, its upper crags soaring 7000 to 8000 feet above the sea. The lake is over 1000 feet below their summits, and is one of the deepest fresh water lakes on earth. The mountain crags, the lake, and the surrounding territory of mountains, pinnacles and forests are collectively known as Crater Lake National Park.

The story of Crater Lake and how it came into being will be briefly told here. But the traveler, even without any knowledge of its unique history, will still stand fascinated on its shores.

### *Oregon's Mountain that Vanished*

**C**RATER LAKE'S dwelling place, Mount Mazama, is about 100 miles north of Mount Shasta, California's great sleeping fire mountain, and is a true member of that chain of extinct volcanoes that includes Rainier, Adams and St. Helens in Washington, and Hood, Jefferson and the Three Sisters in Oregon—all snow-capped peaks today of rare scenic loveliness—and Lassen, the still smoldering volcano of California. Mount Mazama's fires, however, are utterly stilled. Its day as a fire-breathing mountain has been over for untold centuries. Its loftiest crag is now but 8156 feet above sea level. Yet there was a time when this mountain was probably equal to Rainier and Shasta, perhaps overtopping 15,000 feet.

Created by the volcanic forces that cast up its neighbors, Mount Mazama, like them, grew cold. There came a day when great glaciers gathered. Such glaciers may still be seen upon Rainier, Adams, Hood, Shasta and other volcanic cones of the Pacific Northwest.



*Crater Lake National Park is midway between Portland and California points on Shasta Route of Southern Pacific. It is embraced between the two lines of Shasta Route which are known as new Cascade Line (on the east side of the Lake) and Siskiyou Line (on the lake's west side), and may be reached via either line.*

Yet Mount Mazama is only 7000 to 8000 feet high today. What became of the rest of it? Evidently there was a vast cataclysm of nature that carried the upper half of Mount Mazama away, leaving a yawning depression. But the surrounding plains of Oregon do not show debris of an explosion. Yet *seventeen cubic miles* of rock and lava have vanished from the earth. The conclusion of geologic science is that the entire upper half of Mount Mazama fell in upon itself. But this is only half the story.



The resulting crater, or "caldera", 6 miles long and 5 miles wide, has been healed and cooled by the falling rains and snows of ages. This precipitation, rising foot by foot, has covered over the great pit to a depth of nearly 2000 feet. The site of the vanished summit is thus covered by a vast, glittering lake of deepest indigo.

And what a lake! In 1853 a party of prospectors was ranging over the Cascade Range in search of a lost mine. The mine was never found. But the mule of one rider stopped suddenly, his forefeet planted at the brink of a mighty crater. It was then that Crater Lake, bluest of the blue lakes of nature, was first beheld by white men's eyes.

For years after the great discovery, Crater Lake remained accessible only to travelers on horseback. But every party that reached the spot brought back stories of the witchery and mystery of this fresh water lake without visible outlet.

And so the varied wonders of Crater Lake came to be known—its blue waters and its painted cliffs,

and the prospects that could be obtained from those cliffs, Llaio Rock, the Watchman, the Cloud Cap, Glacier Peak, Garfield Peak, Vidae Peak, and the others. It was recognized that here was one of the most interesting scenic spots in the West. So it was made a National Park, and set aside as a place of public recreation for all time.

Not only Crater Lake, but all its surrounding ravines, forests, pinnacled rocks and boulder-strewn canyons, are contained within Crater Lake National Park; and these in turn are surrounded by national forests. The scenic glories of this wonderland may be enjoyed by means of auto stage trips, and by motor boats on the lake itself.

### *Excellent Hotel and Camp*

**T**HE Crater Lake National Park Co. operates a very attractive hotel and a comfortable camp in the Park. Crater Lake Lodge, on the rim of the Lake, is of stone and frame, containing comfortable

sleeping rooms both with and without baths. Tent houses are provided at the Lodge as sleeping quarters for those who prefer them, meals being taken at the Lodge. The Park season is from July 1 to September 20.

#### Rates at Crater Lake Lodge (American Plan):

|   |   |
|---|---|
| <i>In Lodge . . . . .</i>                 | <i>\$6.00 per day and up per person</i> |
| <i>Room with bath . . . . .</i>           | <i>9.00 per day per person</i>          |
| <i>Room with private toilet . . . . .</i> | <i>7.50 per day per person</i>          |
| <i>Rooms—hot and cold water . . . . .</i> | <i>6.75 per day per person</i>          |
| <i>In Tent Houses . . . . .</i>           | <i>5.25 per day per person</i>          |

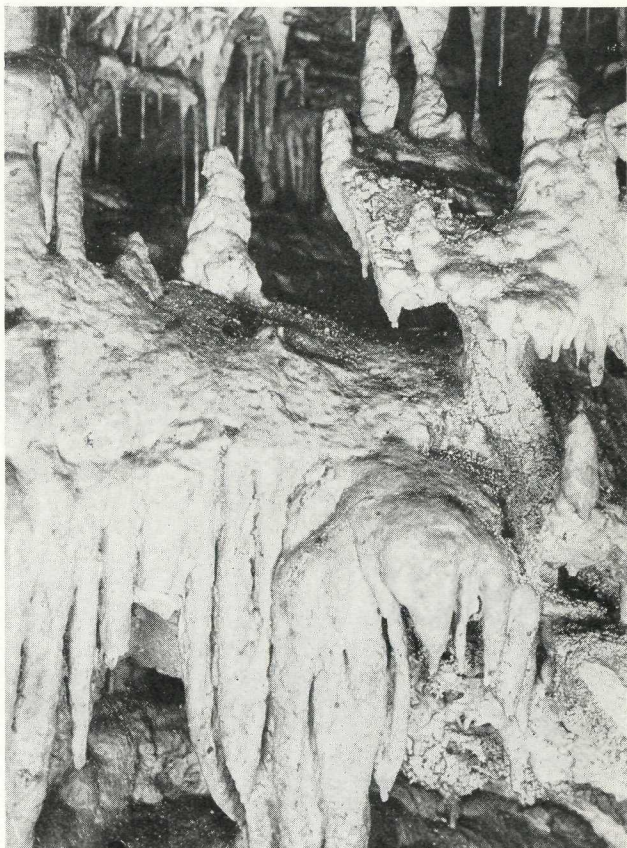
#### Auto, stage and boating fares are as follows:

|  |                |
|--|----------------|
| <i>Auto stage, Chiloquin to Crater Lake and return . . . . .</i>   | <i>\$12.00</i> |
| <i>Auto stage, Klamath Falls to Crater Lake and return . . . . .</i>   | <i>12.00</i>   |
| <i>Auto stage, Medford to Crater Lake and return . . . . .</i>   | <i>12.00</i>   |
| <i>Auto stage, Chiloquin or Klamath Falls to Crater Lake and Crater Lake to Medford; or vice versa . . . . .</i> | <i>12.00</i>   |
| <i>Sunset drive (auto stage) 10 miles . . . . .</i>  | <i>1.00</i>    |
| <i>Around the lake (launch) 15 miles . . . . .</i>   | <i>2.00</i>    |
| <i>Wizard Island and return (launch) . . . . .</i>   | <i>1.00</i>    |
| <i>Row boats per hour . . . . .</i>  | <i>.60</i>     |

In the hospitable living-room of Crater Lake Lodge, whose windows look down 1000 feet upon the blue witchery of Crater Lake's waters, guests gather about a huge fireplace in the evening and hear nature lectures and explanations of the scientific origins of the surrounding wonderland, delivered in simple language by government naturalists.

Originally without any fish life, Crater Lake has been well stocked by the government and now abounds with rainbow and black-spotted trout. Trout, steelhead and salmon also frequent the nearby mountain lakes and streams.

Twelve miles north of Crater Lake is Diamond Lake, one of the most beautiful bodies of water in the Cascade Range. The Forest Service has constructed a road from the south end of the lake to the Crater Lake National Park boundary, and this makes it possible to make the round-trip from Diamond Lake to Crater Lake in a few hours' time.



PATTERSON PHOTO.

The Oregon Caves—"The Marble Halls of Oregon"—have fantastic beauty in their marble, water-covered, chambers and halls.

### *Easy to Reach via Southern Pacific*

ALL sections of Crater Lake National Park can now be reached comfortably in a few hours by auto stage from Chiloquin or Klamath Falls on new Cascade Line, and from Medford on Siskiyou Line (see map on page 3). The two lines are optional to travelers on Southern Pacific's Shasta Route between San Francisco and Portland and the Pacific Northwest. Crater Lake is 38 miles from Chiloquin, 62 miles from Klamath Falls, and 82 miles from Medford. The passenger may arrange to enter the Park by any of its three gateways (Chiloquin, Klamath Falls, Medford) and leave by the same, or a different, gateway. Excellent roads connect Crater Lake with Chiloquin, Klamath Falls and Medford, over which comfortable auto stages,

making direct connection at Chiloquin, Klamath Falls and Medford with Southern Pacific trains, make the trip on regular schedule.

As stated previously, Crater Lake is served by Southern Pacific's Shasta Route, extending from San Francisco to Portland. Between San Francisco and Southern Oregon, Shasta Route offers the traveler a choice: either by train through the Sacramento Valley and Sacramento Canyon (the "all-train route"); or the Redwood Empire Tour along the Northern California coast—by Northwestern Pacific train to Eureka, thence by Pacific Greyhound motor coach via Crescent City to Grants Pass (see map on page 3), with forests of Giant Redwoods enroute. Additional fare for the Redwood Empire Tour is only \$10.40. From Grants Pass is also an inexpensive one-day side trip, during season June 1 to October 1, to the Oregon Caves.

Less than forty miles southwest of Grants Pass and easily reached from the Redwood Empire motor coach tour are the renowned water-carved Oregon Caves. Behind the comparatively small opening through which a cold stream trickles, are huge halls and chambers that extend for hundreds of feet into the depths of Cave Mountain. Marble stalactites and stalagmites lend weird effects which are reflected in the names applied to some of the chambers. "The Queen's Room," "Dante's Inferno," and "The Menagerie" are suggestive names.

If you go from San Francisco to Oregon via the Sacramento Valley and Canyon, you have a choice of lines between Black Butte, Calif., and Eugene, Ore.: either new Cascade Line, running through a vast virgin region; or Siskiyou Line, through the lovely Rogue, Umpqua and Willamette River Valleys.

Continuing northward from Eugene, you run down the Willamette Valley to Portland, southern gateway to Pacific Northwest country.

For information regarding Crater Lake, Oregon Caves or the Redwood Empire write Crater Lake National Park Co., July 1 to Sept. 20, at Crater Lake, Oregon, after Sept. 20, at Portland, Oregon; Oregon Caves Resort, Oregon; Redwood Empire Association, San Francisco; or any Southern Pacific Representative listed elsewhere in this folder. For information concerning other scenic attractions of Oregon or industrial opportunities communicate with the Oregon State Chamber of Commerce or the chamber of commerce of any Oregon community or with a Southern Pacific Representative.

# To Lovely Crater Lake —

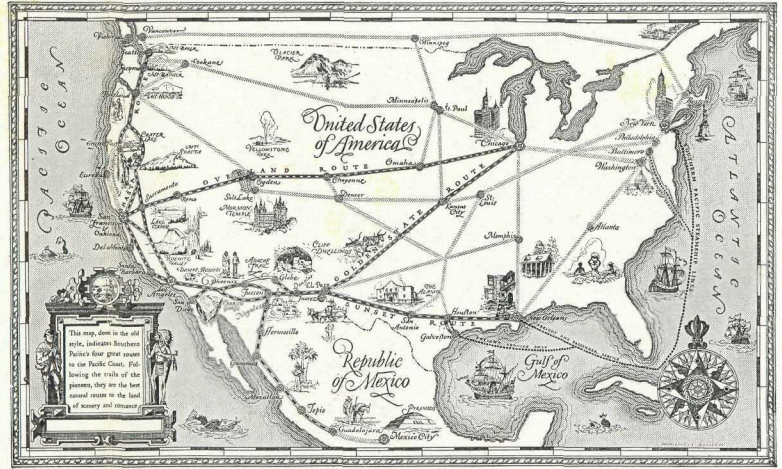
And See The Whole Pacific Coast enroute

**S**OUTHERN PACIFIC'S four great scenic routes to and from California are shown on this map—Shasta, Overland, Sunset, and Golden State. Truly a wide choice—offered you only by Southern Pacific. Each route is rich in scenic, romantic and historic attractions. Over each route run world-known trains, with famous meal service at moderate prices. Go one way, return another. And see the whole Pacific Coast, for Southern Pacific offers you a choice of scenic routes:

Between the Pacific Northwest and California—new Cascade Line and Siskiyou Line of Shasta Route, with five fine daily trains over these two lines, including the "Cascade" over Cascade Line, and the "Shasta" over Siskiyou Line.

Between San Francisco and Los Angeles—scenic Coast Line, running right along the ocean shore; and San Joaquin Valley Line, serving Yosemite, General Grant and Sequoia National Parks, with nine fine daily trains over these two lines, including two famous trains by daylight: the "Daylight" over Coast Line, and the "San Joaquin" over San Joaquin Valley Line.

Full information about stopovers, etc., from the Southern Pacific representatives listed below, who will also give you a copy of Southern Pacific's free booklet "How Best to See the Pacific Coast."



This map with historic pictorial border, 23x32 inches, in full colors on parchment paper, for 25¢ stamps or coin, only a fraction of its actual cost. Address E. W. Clapp, Dept. 2, Southern Pacific Co., 65 Market St., San Francisco.

## SOUTHERN PACIFIC REPRESENTATIVES

Your nearest Southern Pacific representative will give you full information as to passenger fares, Pullman reservations, time schedules, etc. He will also attend to such details as tickets, hotel and Pullman reservations, etc., for you, or help you with freight shipment. If there is a Southern Pacific agent in your city, he will gladly call at your office or home and personally help you arrange your trip. Phone or write him.

|   |  |
|---|--|
| ALTAIR, CAL.  | J. H. Mahan, District Freight and Passenger Agent                |
| ATLANTA, GA., 216 Healey Bldg.  | D. Ashby, General Agent  |
| ALEXANDRIA, LA., Seaman and Casson Sts.   | L. A. Vasey, Division Freight and Passenger Agent                |
| AUSTIN, TEX., 624 Brazos St.  | W. R. Smith, Division Freight and Passenger Agent                |
| BALTIMORE, MD., 209 Morris Bldg., N. W. Cor. Charles and Saratoga Sts.              | W. B. Johnson, General Agent                                     |
| BEAUMONT, TEX., Sunset Bldg., 450 Pearl St.   | F. L. Sheeks, Division Freight and Passenger Agent               |
| BIRMINGHAM, ALA., 2031 First Ave.   | S. J. Brown, General Agent                                       |
| BOSTON, MASS., 204 Washington St., Room 209   | M. L. Love, General Agent  |
| BROWNSVILLE, TEX., 1106 Levee St.   | M. L. Love, General Agent  |
| BUFFALO, N. Y., 204 Elliott Square Bldg., 207 Main St.                              | G. H. Vogel, General Agent                                       |
| CHICAGO, ILL., 35 West Jackson Bldg.  | J. H. Desbrose, General Agent, Passenger Department              |
| CHICAGO, ILL., 85 West Jackson Bldg.  | A. C. Hedlund, General Agent, Freight Department                 |
| CINCINNATI, OHIO, 205 Dixie Terminal Bldg., Fourth and Walnut Sts.                  | Robt. McDowell, General Agent                                    |
| CLEVELAND, OHIO, 1116 Hippodrome Bldg., 720 Euclid Ave.                             | E. G. Cook, General Agent  |
| CORPUS CHRISTI, TEX., 406 Peoples St.   | A. E. Weymouth, General Agent                                    |
| CORSCIANA, TEX., East Collins Ave. and North Tenth St.                              | J. H. Everts, Commercial Agent                                   |
| DALLAS, TEX., 1313 Commerce St.   | J. E. Bledsoe, Division Passenger Agent                          |
| DENVER, COLO., 102-3 Boston Bldg., Seventeenth and Champa Sts.                      | E. H. Williams, General Agent                                    |
| DETROIT, MICH., 205-7 Majestic Bldg., Woodward and Michigan Aves.                   | L. H. Trimble, General Agent                                     |
| EL CENTRO, CAL., Southern Pacific Passenger Station                                 | J. W. Donohue, District Freight and Passenger Agent              |
| EL PASO, TEX., 1st Nat. Bank Bldg., 101 North Oregon St.                            | J. E. Monroe, District Passenger Agent                           |
| EUGENE, ORE., 610 Willamette St.  | L. L. Graham, District Freight and Passenger Agent               |
| FORT WORTH, TEX., 116 East Ninth St.  | E. A. Pennington, District Passenger Agent                       |
| FRESNO, CAL., corner H and Mariposa Sts.  | W. T. Plummer, District Passenger Agent                          |
| GALVESTON, TEX., 2024 Market St.  | H. C. Franks, Division Freight and Passenger Agent               |
| GLENDALE, CAL., 106 North Brand Bldg.   | H. E. Fierston, District Passenger Agent                         |
| HARLINGEN, TEX., Commerce Bldg.   | W. J. Carter, Assistant General Freight and Passenger Agent      |
| HOUSTON, TEX., 913 Texas Ave.   | E. J. Peters, Division Passenger Agent                           |
| INDIANAPOLIS, IND., 509 Merchants Bank Bldg., 11 South Meridian St.                 | Lyon Liston, General Agent                                       |
| KANSAS CITY, MO., 113 Railway Exchange Bldg., 795 Walnut St.                        | F. W. Selwig, General Agent                                      |
| KLAMATH FALLS, ORE., 515 Main St.   | C. M. Biggs, District Freight and Passenger Agent                |
| LAKE CHARLES, LA., Majestic Hotel.  | Jos. Spear, Assistant General Freight and Passenger Agent        |
| LONG BEACH, CAL., 140 West Ocean Ave.   | L. Overman, District Passenger Agent                             |
| LOS ANGELES, CAL., Pacific Electric Bldg.   | C. A. Pester, District Passenger Agent                           |
| MEADOW, ORE., 204 Meadow Nat. Bank Bldg.  | A. S. Rosenbaum, District Freight and Passenger Agent            |
| MEMPHIS, TENN., 710 Exchange Bldg., 130 Madison Ave.                                | C. A. Bevis, General Agent                                       |
| MINNEAPOLIS, MINN., 1020 Metropolitan Life Bldg., 125 South Third St.               | R. K. Smith, General Agent                                       |
| MORNINGTON, CAL., Southern Pacific Passenger Station                                | I. T. Sparks, Division Freight and Passenger Agent               |
| NEW ORLEANS, LA., 610 Poydras St.   | A. C. Ziegler, Division Passenger Agent                          |
| NEW ORLEANS, LA., 610 Poydras St.   | Bailey M. Clark, General Agent, Southern Pacific Steamship Lines |
| NEW YORK, N. Y., 535 Fifth Ave. (at 44th St.), Room 1012                            | H. H. Gray, General Eastern Passenger Agent                      |
| NEW YORK, N. Y., 531 Fifth Ave. (at 44th St.)—Southern Pacific Uptown Ticket Office | Geo. V. McArt, City Passenger and Ticket Agent                   |
| NEW YORK, N. Y., 156 Broadway, Room 2015—Southern Pacific Downtown Ticket Office    | Edwin Barling, Ticket Agent                                      |
| NEW YORK, N. Y., 165 Broadway   | S. C. Childs, General Eastern Freight Agent                      |
| OAKLAND, CAL., Thirteenth and Broadway  | L. F. Hudson, District Passenger Agent                           |
| ODGEN, UTAH, 525 David Eccles Bldg., 377 Twenty-fourth St.                          | F. G. Ruthrauff, District Freight and Passenger Agent            |
| OKLAHOMA CITY, OKLA., 924 Perrine Bldg., 116 North Robinson St.                     | J. A. Eads, General Agent  |
| PASADENA, CAL., 148 East Colorado St.   | G. W. Wetherby, District Passenger Agent                         |
| PHILADELPHIA, PA., 706 Packard Bldg., 111 South Fifth St.                           | T. Brooks, General Agent   |
| PHOENIX, ARIZ., 101 North Central Ave.  | S. J. Schwartz, District Passenger Agent                         |
| PITTSBURGH, PA., 205 Park Bldg., 355 Fifth Ave.                                     | H. F. Starke, General Agent                                      |
| PORTLAND, ORE., 6th and Washington Sts.   | J. A. Huggood, District Passenger Agent                          |
| RENO, NEV., Commercial Row and Lake St.   | Theodore Bergstrom, District Freight and Passenger Agent         |
| RIVERSIDE, CAL., 750 Market St.   | J. R. Downs, District Freight and Passenger Agent                |
| SACRAMENTO, CAL., Southern Pacific Passenger Station                                | M. A. Peck, District Passenger Agent                             |

|  |  |
|--|--|
| SALEM, ORE., 184 North Liberty St.                                 | K. A. De Marais, District Freight and Passenger Agent        |
| SALT LAKE CITY, UTAH, 41 South Main St.                            | D. R. Owen, General Agent                                    |
| SAN ANTONIO, TEX., 415 N. St. Marys St.                            | E. McClannahan, Assistant General Passenger Agent            |
| SAN DIEGO, CAL., 677 Spivey's Bldg.                                | A. D. Hagaman, District Freight and Passenger Agent          |
| SAN FRANCISCO, CAL., 712 Market St.                                | T. Louis Chess, District Passenger Agent                     |
| SAN JOSE, CAL., Second and San Fernando Sts.                       | Geo. B. Hanson, District Passenger Agent                     |
| SANTA ANA, CAL., 213 West Fourth St.                               | L. B. Vaila, District Freight and Passenger Agent            |
| SANTA BARBARA, CAL., 937 State St.                                 | G. C. Drake, District Passenger Agent                        |
| SANTA MONICA, CAL., 416 Santa Monica Bldg.                         | A. J. Rehbold, District Passenger Agent                      |
| SANTA ROSA, CAL., 210 Rosenberg Bldg.                              | R. B. Houston, District Freight and Passenger Agent          |
| SEATTLE, WASH., 1495 Fourth Ave.                                   | C. M. Andrews, Assistant General Freight and Passenger Agent |
| SHREVEPORT, LA., 520 Market St.                                    | M. J. Dooley, Division Freight and Passenger Agent           |
| ST. LOUIS, MO., 204 Carleton Bldg., 308 North Sixth St.            | L. B. Banks, General Agent                                   |
| STOCKTON, CAL., Main and San Joaquin Sts.                          | S. C. Beane, District Freight and Passenger Agent            |
| TUCSON, ARIZ., Scott Bldg., 213 East Congress St.                  | E. D. Rockwell, District Freight and Passenger Agent         |
| WACO, TEX., 112 South Sixth St.                                    | Wade Cunningham, Division Freight and Passenger Agent        |
| WASHINGTON, D. C., Suite 301, Shoreham Bldg., 15th St. at H. N. W. | A. J. Poston, General Agent                                  |
| WASHINGTON, D. C., 1510 H St., N. W.                               | G. V. McArt, Agent, Washington-Sunset Route                  |

## Foreign Agents

These conveniently-located Southern Pacific foreign offices are equipped to render complete passenger and freight service. Patrons are cordially invited to make full use of these facilities.

|  |  |
|--|--|
| GENOA (4), ITALY, Via Roma 84                    | Brizzolesi, Kemsley & Millbourn, General Agents for Italy  |
| MILAN (12), ITALY, Via MOSCOW 18                 | Genoa, Palestine, Turkey and Africa  |
| ROME, ITALY, Piazza de Spagna, 50/50             |  |
| HAMBURG, GERMANY, 18 GlockengieBerrwall          | G. Ruhr, General Agent for Germany, Austria, Hungary, Switzerland, Poland, Roumania, Denmark, Norway, Sweden and Netherlands |
| HAVANA, CUBA, Pl. y Margall (Antes Obispo) 46    | R. Menendez, General Agent for Cuba  |
| LIVERPOOL, ENGLAND, 21 Water Street              | A. B. Reynoldson, General Agent for Great Britain  |
| LONDON, ENGLAND, 49 Leadenhall Street            | A. B. Reynoldson, General Agent for Great Britain  |
| MEXICO CITY, MEX., Avenida Cinco de Mayo, No. 32 | I. N. R. F. Bonser, Assistant General Agent, London  |
| MONTERREY, MEX., Langston Bldg.                  | F. V. Stark, Assistant Traffic Manager   |
| PARIS, FRANCE, 31 ue Franchet                    | Alonso Marquez, General Agent for Northern Mexico  |
| VANCOUVER, B. C., 385 Granville St.              | H. Desmit, General Agent for France, Belgium, Portugal and Spain   |
|  | E. J. Hendry, General Agent for Western Canada   |

E. W. CLAPP, General Passenger Traffic Manager, San Francisco, Cal.  
 F. C. LATHROP, Passenger Traffic Manager, San Francisco, Cal.  
 J. L. McPATL, Passenger Traffic Manager, Los Angeles, Cal.  
 C. A. O'BANDY, Passenger Traffic Manager, Portland, Ore.  
 J. D. MASON, General Passenger Agent, El Paso, Texas  
 J. H. McCLEURE, General Freight and Passenger Agent, Phoenix, Ariz.  
 J. T. MONROE, Passenger Traffic Manager, Texas and Louisiana Lines, Houston, Texas.  
 W. C. McCORMICK, General Passenger Agent, New Orleans, La.  
 O. P. BARRETT, Passenger Traffic Manager, Chicago, Ill.  
 WILLIAM SIMMONS, Traffic Manager, Southern Pacific Steamship Lines, New York, N. Y.  
 L. H. GOFF, Traffic Manager, Mexican Lines, Guadalajara, Mex.  
 C. S. FAT, Vice President and Traffic Manager, Texas and Louisiana Lines, Houston, Texas.  
 F. S. MCGINNIS, Vice President, System Passenger Traffic, San Francisco, Cal., and Houston, Texas.