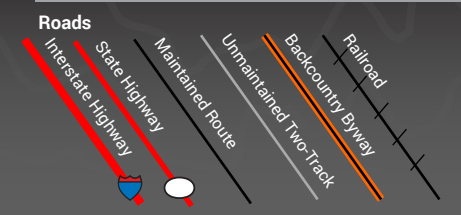




# Transcontinental Railroad Backcountry Byway

Salt Lake Field Office

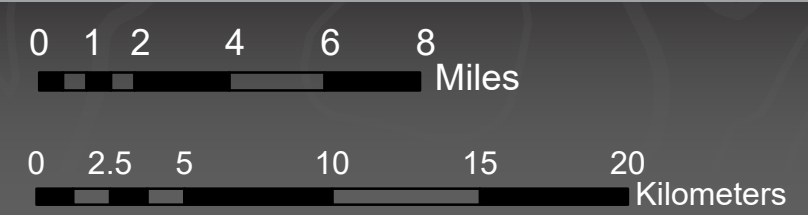
This map is geo-referenced  
BLM Salt Lake Field Office  
2370 Decker Lake Blvd, West Valley City, UT 84119  
Phone: 801977-4300



Land Manager					
	Bureau of Land Management (BLM)		US Fish and Wildlife		Indian Reservation
	State		Wildlife Reserve /Management Area		USFS Wilderness Area
	Private		Military Reservation		US Forest Service

Visitor Information					
	Gas Station		Point of Interest		Interpretive Site
	Information		Restroom		Town

Caution: Old railroad spikes sometimes surface on the road and may cause a flat tire. Be sure to have at least one spare tire with you. Stay on the road. There are several mud flats along the route, along with important wildlife habitat and historical and cultural resources that can be damaged. Roads may be impassable when wet.



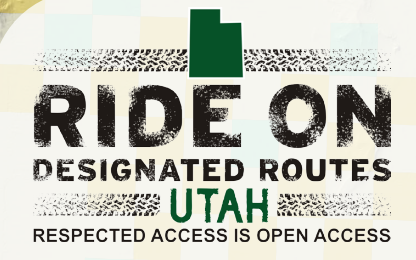
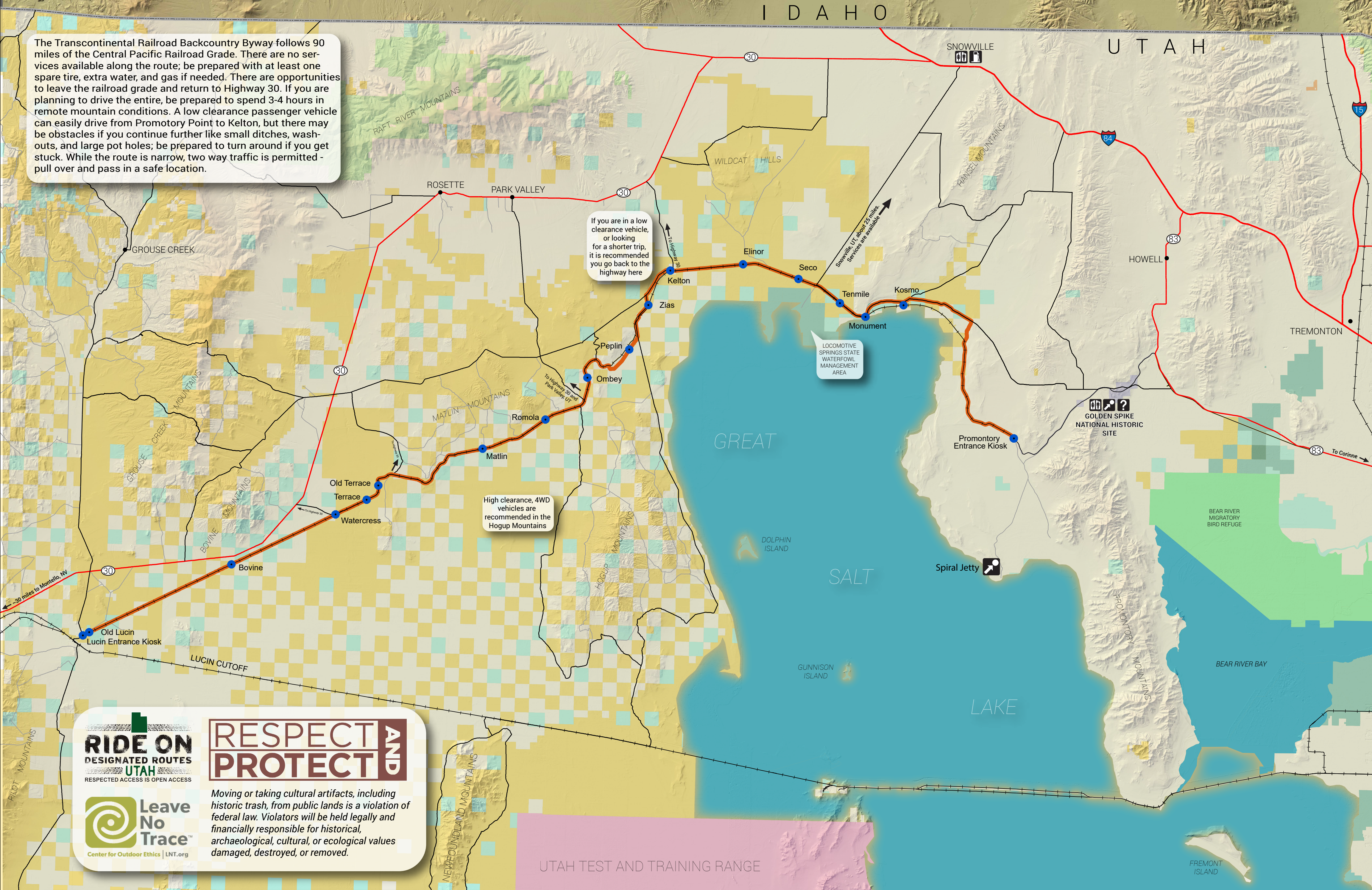
\* DISCLAIMER: This information is provided as a courtesy only, no warranty, expressed or implied, is made as to the current validity of this information. Trail ratings are only intended to serve as general overviews of difficulty levels, and may vary from the trail ratings in other areas you are familiar with. Weather events can quickly alter trail conditions and increase difficulty levels, be prepared for changing conditions at all times. Unsecured, abandoned mines may be present near the trails for your safety, never enter abandoned mines. The BLM is not liable for any incidents arising from the use of the information presented here-each user is solely responsible for their own safety while enjoying their public lands. Produced December 2018.

The Transcontinental Railroad Backcountry Byway follows 90 miles of the Central Pacific Railroad Grade. There are no services available along the route; be prepared with at least one spare tire, extra water, and gas if needed. There are opportunities to leave the railroad grade and return to Highway 30. If you are planning to drive the entire, be prepared to spend 3-4 hours in remote mountain conditions. A low clearance passenger vehicle can easily drive from Promotory Point to Kelton, but there may be obstacles if you continue further like small ditches, wash-outs, and large pot holes; be prepared to turn around if you get stuck. While the route is narrow, two way traffic is permitted - pull over and pass in a safe location.

If you are in a low clearance vehicle, or looking for a shorter trip, it is recommended you go back to the highway here

LOCOMOTIVE SPRINGS STATE WATERFOWL MANAGEMENT AREA

High clearance, 4WD vehicles are recommended in the Hogup Mountains



## RESPECT AND PROTECT



Moving or taking cultural artifacts, including historic trash, from public lands is a violation of federal law. Violators will be held legally and financially responsible for historical, archaeological, cultural, or ecological values damaged, destroyed, or removed.

UTAH TEST AND TRAINING RANGE