

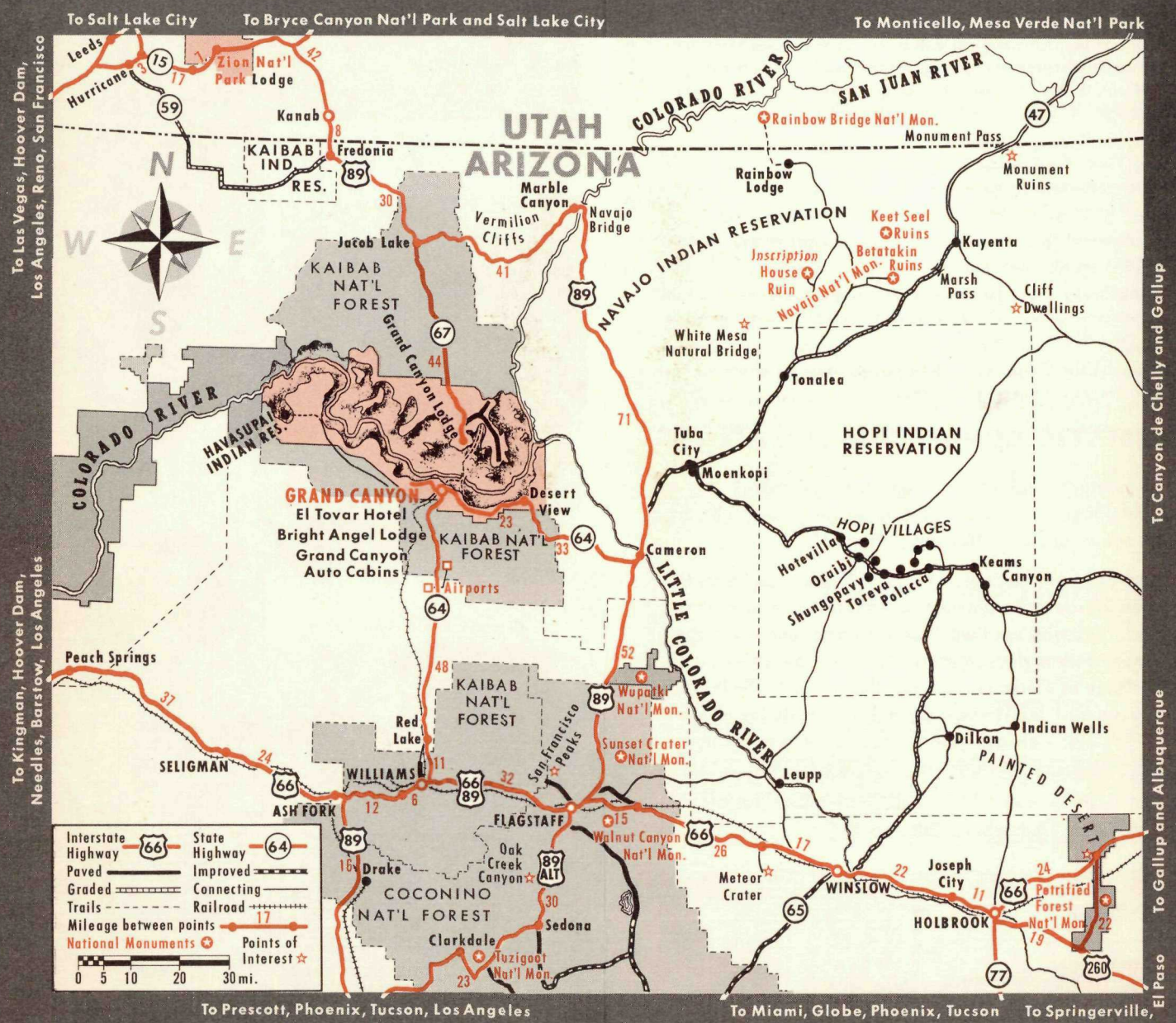
How to get to the Grand Canyon

The South Rim of the Grand Canyon is easily reached by railroad or automobile. A branch line of the Santa Fe Railway (the only railroad entering Grand Canyon National Park) runs north from Williams, Arizona, to the

hotels on the Rim. (Free transfer by hotel bus from railway station to hotels.) Pullmans are operated daily direct to Grand Canyon on certain transcontinental trains, and convenient motor coach connections are made with other trains. By automobile the South Rim is reached over Arizona Highway 64 branching off U. S.

Highways 66 and 89. (A fee of \$1.00 is charged by the National Park Service for each car entering the Park.) Airplane travel is serviced by two airports, located 18 and 30 miles south of the hotels. (Limousine Service to scheduled flights.)

GRAND CANYON—Center of a vast and fascinating vacation land



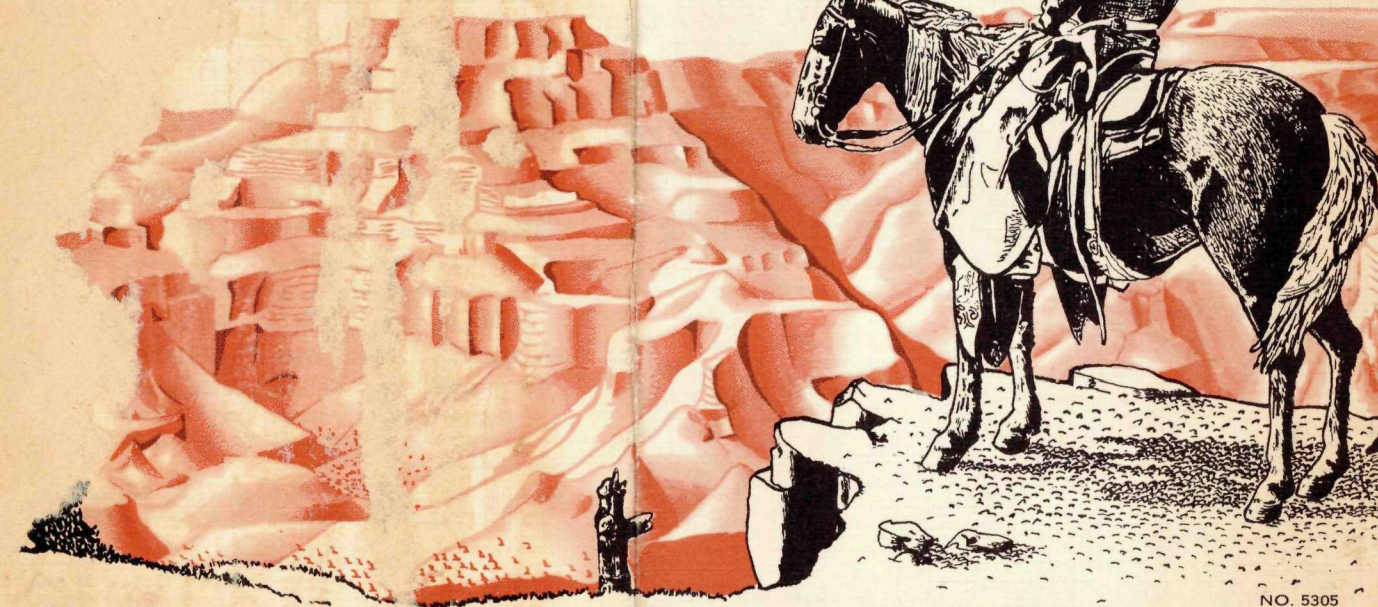
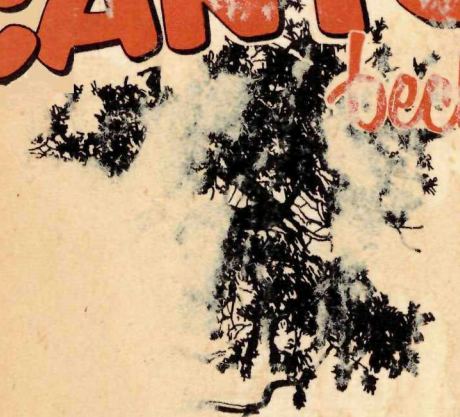
To Las Vegas, Hoover Dam, Los Angeles, Reno, San Francisco

To Canyon de Chelly and Gallup

To Gallup and Albuquerque

El Paso

the GRAND CANYON beckons!



NO. 5305

NO. 5305

Come to Arizona's All-Year Vacation Land **GRAND CANYON NATIONAL PARK** This Year!

HOTELS • LODGES • CAMPS • MOTOR TRIPS
TRAIL TRIPS • RECREATION • ENTERTAINMENT

the GRAND CANYON beckons!

Come to Arizona's All-Year Vacation Land **GRAND CANYON NATIONAL PARK** This Year!

HOTELS • LODGES • CAMPS • MOTOR TRIPS
TRAIL TRIPS • RECREATION • ENTERTAINMENT

Rates quoted in this folder do not include Arizona Sales Tax or Federal Transportation Tax. Rates and schedules are subject to change without notice.

Reservations protected by deposits (one night's lodging) are advisable throughout the year. Deposit will be refunded if reservation is canceled 24 hours or more before arrival.



The Grand Canyon

GRAND CANYON VILLAGE, a picturesque community on the South Rim (altitude 6,886 ft.) offers all facilities for a brief or extended visit to Grand Canyon National Park. El Tovar Hotel, Bright Angel Lodge and Cabins, and Grand Canyon Auto Cabins—all under Fred Harvey management, all open the year round—provide accommodations for every taste and purse. Public camp grounds maintained by the National Park Service are available for the free use of motorists who bring their own camping equipment.

El Tovar Hotel

is one of the most famous resort hotels in America. The spacious structure with its rambling wings and broad porches is built of native boulders and rustic pine logs. For more than a third of a century it has stood in picturesque silhouette against the Canyon's rim . . . internationally renowned for its excellent cuisine and unobtrusive hospitality.

Rates—European Plan:

	Single	Double
Room without bath	\$3.50	\$4.50
Room with bath	\$5.00 to \$7.50	\$7.00 to \$9.50
Room with bath, twin beds		\$8.50 to \$14.00

Children: 3 to 7 years, inclusive, half rate; 8 years and over, full rate.

Meals:

Table d'hote service in Dining Room . . .	Breakfast	\$1.50
	Luncheon	\$1.50 to \$2.00
	Dinner	\$2.00 to \$3.50

Bright Angel Lodge and Cabins

The new Bright Angel Lodge and Cabins form a picturesque little village on the brink of the Canyon. The various buildings—main lodge, guest lodges and individual cabins—are of log and stone construction, combining rustic simplicity with modern convenience. The guest lodges and numerous individual cabins of one to four rooms offer a wide choice of comfortable, moderately priced living accommodations.

Rates—European Plan:

	Single	Double
Room without bath	\$3.00 to \$3.50	\$4.00 to \$5.00
Room with bath	\$5.00 to \$8.00	\$6.00 to \$8.00
Room with bath, twin beds		\$7.00 to \$9.00
De Luxe Rim Cabins for two		\$10.00 to \$12.00

Children: 3 to 7 years, inclusive, half rate; 8 years and over, full rate.

Meals:

A la carte service in Coffee Room at moderate prices.

Grand Canyon Auto Cabins

offer attractive, comfortably furnished sleeping and housekeeping accommodations for motorists, close to the South Rim. Public showers; firewood and water furnished; free use of laundry to cabin occupants.

Rates:

Cabins without bath, running hot and cold water, furnished:

1 person	Double Bed	\$3.50, Twin Beds	4.00
2 persons			4.50
3 persons			5.50
4 persons			

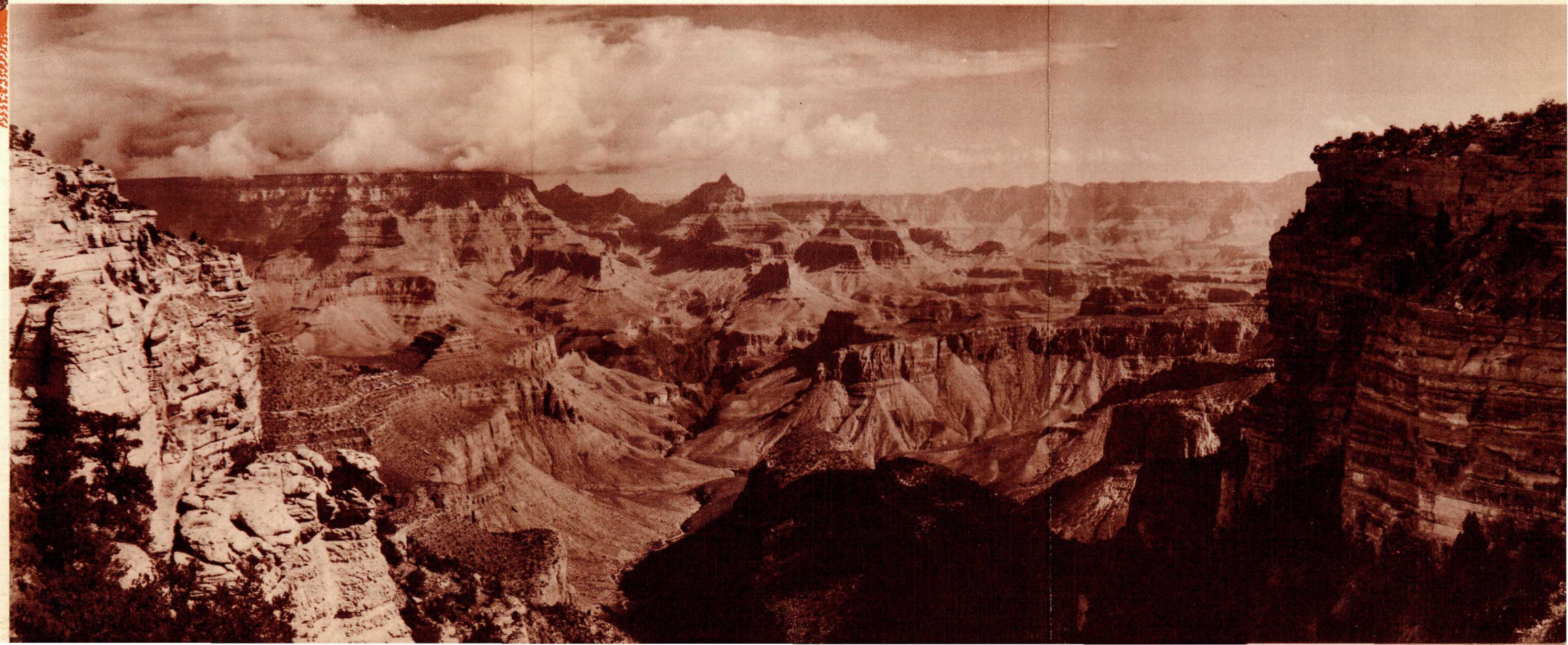
Room with Shower Bath, furnished:

1 person	Double Bed	\$4.50, Twin Beds	5.00
2 persons			5.50
3 persons			6.50
4 persons35

Hot plate meals, reasonably priced, cafeteria style, are served at the Main Lodge from June to late September.

Phantom Ranch

Nestling at the very bottom of the Canyon among the towering crags of Bright Angel Canyon—nearly a vertical mile below the Rim—the Ranch comprises a group of rustic cabins, a central lodge and a recreation hall, surrounding a swimming pool filled with crystal-clear water. Inner-canyon trails are the only means of reaching this secluded place.



The Grand Canyon is the world's most spectacular illustration of erosion—of the combined action of a great river, of rain, wind and the prying fingers of frost—a gigantic chasm 217 miles long, 4 to 18 miles wide and a mile deep. At its bottom, a mighty river, the Colorado, rushes to the sea. Rising from its depths are whole ranges of mountains, their tops only slightly below the rim of the gorge. Over the rock temples and into the depths of the chasm spreads a sea of ever-changing colors. By day it is the home of molten color; by moonlight it is a blue mystery. From above, it is an immeasurable abyss; from within, it dwarfs man and animal. Always, in whatever mood, it grips and humbles and uplifts—for here is the ultimate in silent grandeur and beauty.

EN ROUTE to Grand Canyon, see the wonders of Arizona's and New Mexico's scenic Indian country. Fred Harvey Houses will help you: La Fonda in old Santa Fe; The Alvarado, Albuquerque, and El Na-

vajo, Gallup; the Painted Desert Inn at Petrified Forest National Monument; restful La Posada in Winslow and the Fray Marcos in Williams, gateway to Grand Canyon. Ask for illustrated folders.

THERE IS MUCH TO SEE AND DO

at Grand Canyon National Park

ALL FACILITIES ON THE SOUTH RIM ARE OPEN THE YEAR 'ROUND

CONDUCTED MOTOR AND TRAIL TRIPS

The Grand Canyon Rim Drive

This famous motor tour of the South Rim is the one sight-seeing trip which every visitor should take. For nearly seventy miles the easy-riding motor coaches operated by well-trained driver-guides follow picturesque roads through fragrant forests of pine and juniper, emerging at short intervals upon startling Canyon views.

Morning Drive to Hermit's Rest: Motor coaches leave El Tovar Hotel and Bright Angel Lodge, traveling westward over Hermit Rim Road along the brink of the chasm. Stops are made at Trail View, Hopi, Mohave and Pima Points—each offering its own superb view—and finally at Hermit's Rest. The latter, a unique cliff-house built of Canyon boulders, with rustic lounge, great fireplace and observation porch, is an attraction in itself.

Afternoon Drive to Desert View: After luncheon, motor coaches head from the hotels eastward over Desert View Road. Stops are made at Yavapai Observation Station and at Moran and Lipan Points. The end of the drive eastward brings the traveler to the climax of the trip—The Watchtower at Desert View, a faithful re-creation of strange towers erected by the ancient inhabitants of the Southwest many centuries ago. The Watchtower commands one of the most magnificent of Grand Canyon views as well as a sweeping panorama of Kaibab National Forest, the Painted Desert and the Navajo Indian Country.

Rates:
Morning and Afternoon Drive, including light refreshments at Hermit's Rest and The Watchtower, per person \$7.00
Morning Drive, taken separately, per person 3.00
Afternoon Drive, taken separately, per person 6.00
Children: 6 to 11 years, inclusive, half rate.

Trail Trips Into The Canyon

No able-bodied visitor should see the spectacle of the Grand Canyon and leave willingly without going down one of the inner-canyon trails on muleback. To be fully enjoyed and understood, the immense gorge must be seen from both top and bottom—from within as well as from without. Exploring the Canyon on the magnificent trails built by Government engineers is a memorable adventure. Experienced guides lead the trail parties starting each day on these thrilling trips.

One-Day Bright Angel Trail Trip*

Parties for Bright Angel Trail leave El Tovar Hotel and Bright Angel Lodge each morning. From Rim to River and back, every turn of this historic trail opens new vistas, each seemingly more spectacular than the one before.

About half way down a brief stop is made at Indian Gardens, a verdant oasis amid the wide Tonto Plateau separating the so-called Inner Gorge from the precipitous drops along the rim. From there the trail stretches out to the edge of the plateau and presently heads downward into the Granite Gorge leading to the rocky banks of the Colorado River. Here a stop is made for rest and luncheon.

The return journey is made with frequent stops, reaching the hotels on the South Rim late in the afternoon.

Rates and Schedule:
Per person, including box lunch, and service of guide:
To the Colorado River . . . \$11.50 To Plateau Point . . . \$10.00
Children, all ages, full fare.
Leave Hotels on South Rim (to Colorado River) 9:00 A.M.
Leave Hotels on South Rim (to Plateau Point) 10:00 A.M.
Return to Hotels on South Rim 5:00 P.M.

Two-Day Trip to Phantom Ranch* (Down Bright Angel Trail Return Kaibab Trail)

For those who are fortunate enough to have arranged their Grand Canyon schedules to permit spending two days down in the recesses of the chasm, the Phantom Ranch trip offers an unusual opportunity for sightseeing, exploration and adventure.

Rates and Schedule:
Per person, including transportation, saddle mule, service of guide, two meals and overnight accommodations at Phantom Ranch and two box lunches. \$32.75
Children, all ages, full fare.
Leave Hotels on South Rim, via Bright Angel Trail . . . 10:00 A.M.
Return to Hotels via Kaibab Trail about 3:00 P.M.

* All trail trips may be purchased only after arrival at Grand Canyon, though advance reservations are necessary from May through September. The management must reserve the right to refuse trail trips to persons physically handicapped, overweight (more than 150 lbs. fully clothed), advanced in years, or to children under 12.

GRAND CANYON ALL-EXPENSE TOUR

A carefully planned One-Day All-Expense Tour including the complete Grand Canyon Rim Drive (westward to Hermit's Rest and eastward to Desert View) and three meals at El Tovar Hotel is available the year 'round at \$12.75
Children, 6 to 11 years, inclusive 6.40

Trips Into The Surrounding Country

Within a short radius of Grand Canyon lie many of the Southwest's greatest scenic attractions. For information about trips "farther afield" inquire at the Transportation Desk at El Tovar Hotel or Bright Angel Lodge.

Such trips, by private or chartered car, may include a visit to the **Hopi Villages**, most isolated and primitive of all Southwestern pueblos, or to **Havasupai Canyon**, picturesque home of the Supai Indians. The matchless natural arch of **Rainbow Bridge**, the prehistoric Indian ruins of **Wupatki** and **Walnut Canyon National Monuments**, the extinct volcano of **Sunset Crater**, spectacular **Meteor Crater** and the scenic wonders of **Grand Canyon North Rim**, **Jacob Lake**, **Navajo Bridge**, **Oak Creek Canyon**, **Petrified Forest National Monument** and **Painted Desert** are some other of the many points worth visiting.

RECREATION AND ENTERTAINMENT

Grand Canyon National Park offers many opportunities for "in-between-time" activities.

The Hopi House: Opposite El Tovar Hotel there is a reproduction of the terraced dwellings of the Hopi Indians who live in the Grand Canyon region. It contains one of the finest collections of Southwestern curios and souvenirs in the world. Admission free.

Indian Dances: Late each afternoon the Indians perform some of their picturesque ceremonial dances in front of the Hopi House. No admission charge.

The Art Room in El Tovar Hotel contains an exhibit of fine Canyon paintings and photographs which are offered for sale.

News Stands: The news stands in El Tovar Hotel and Bright Angel Lodge carry extensive stocks of Grand Canyon souvenirs and Southwestern curios.

Evening Entertainment: During the summer season, informal entertainment is provided by interesting cowboy musical programs and dances several nights a week at Bright Angel Lodge.

Kolb Brothers' Travelogue: In their studio at the head of Bright Angel Trail, the Kolb Brothers give each day an interesting lecture, illustrated with motion pictures and slides, describing their boat trips down the Colorado River. Moderate admission fee.

Lookout Studio: Near Bright Angel Lodge, the Lookout Studio provides a free telescope for viewing the Canyon. Canyon photographs and camera supplies are offered for sale. Amateur photographers may obtain the advice of an expert, and have their films developed and printed.

Yavapai Point Observation Station and Museum: Located on a magnificent point one and one-half miles east of El Tovar Hotel, the National Park Service maintains an observation station and museum. A battery of high-powered telescopes is available. No admission charge.

Hiking and Riding: Visitors who enjoy hiking will find many delightful footpaths along the Rim. Good saddle horses are available, and there are interesting bridle paths leading in all directions. Rates: 2 hours or less \$4.00, half day \$6.00, full day \$9.00

Guide Service: Special guides for private groups are available at \$9.00 per day or \$6.00 per half day.

Moving Picture Show: Twice a week, moving pictures are shown in the Community House. Programs comprise recent releases of feature films, short subjects, newsreels, etc.

Chartered Cars: Six-passenger touring cars may be chartered for private use on regular or special trips.

CLIMATIC CONDITIONS at the Canyon

High altitude and absence of humidity makes this a healthful region. There is "pep" in the air loaded with the fragrance of cedars, pines and junipers.

Grand Canyon National Park is an all-year-'round resort. It offers the ideal combination of high altitude and southern latitude, insuring cool weather in summer and a preponderance of warm days in winter. On most days there is an abundance of Arizona sunshine, though occasional short showers refresh the atmosphere and rejuvenate the vegetation. The nights are delightfully cool even in midsummer. Mean temperatures are: Spring (March-May) 44°, Summer (June-August) 67°, Fall (September-November) 49°, Winter (December-February) 31°.

GEOLOGISTS estimate it has taken from 7 to 9 million years to cut the Grand Canyon.

Bridle paths lead along the Canyon's rim.

SIX of the seven climatic belts of the world are represented in the Grand Canyon region.

The swimming pool at "down-deep" Phantom Ranch.

FIVE Indian tribes—Hopi, Navajo, Havasupai, Paiute, Hualpai—are living in the Canyon region.

Each afternoon, the Indians perform their dances at the Hopi House.

THREE of the five major chapters of Earth's geologic history are revealed in the Canyon.

At Yavapai Observation Station.

Starting for the Rim Drive.

The Watchtower at Desert View.

THE FIRST white man to view the Grand Canyon was Don Lopez de Cardenas, in 1540.

A Canyon vista from the hotels.

THE OLDEST rocks known to man are exposed in the walls of the Grand Canyon.

The Bright Angel Cabins are attractive and comfortable.

THE COLORADO RIVER carries nearly 1,000,000 tons of silt through the Canyon every 24 hours.

El Tovar . . . on the Canyon's Rim.

Grand Canyon Auto Cabins.

SIXTY species of mammals, 180 birds, 25 reptiles and 5 amphibians are living in the Canyon region.

HOTELS, LODGES, CAMPS AND TRIPS

ARE UNDER *Fred Harvey* MANAGEMENT