



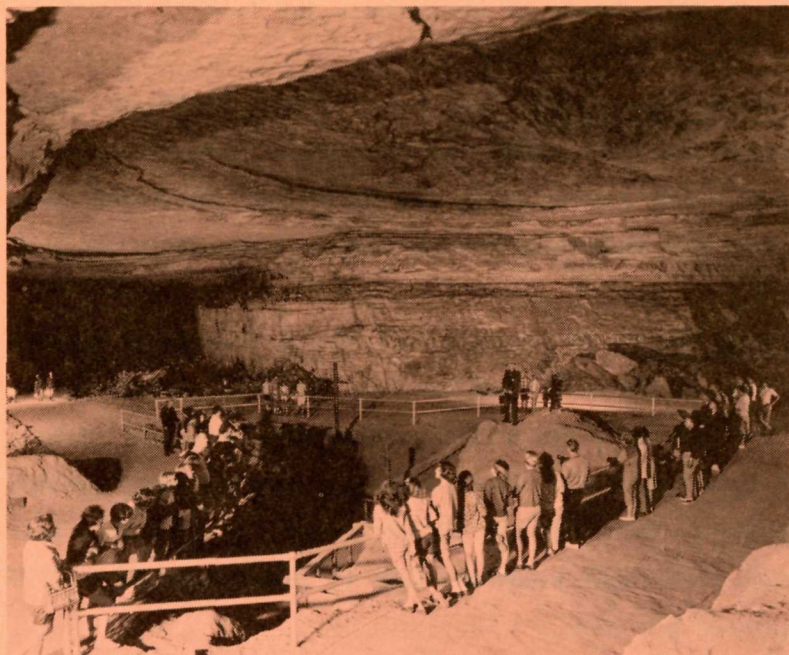
## Visitor Activities

# Mammoth Cave National Park Kentucky

September 7 through November 14, 1970

April 4 through June 12, 1971

Central Time Zone



The VISITOR CENTER is open from 8:00 a.m. to 5:30 p.m. Park Rangers on duty. Information, exhibits, and 12 minute orientation program hourly. ALL CAVE TRIPS depart from here.

We invite you to explore your park below and above ground and to become better acquainted with the world we live in. All cave trips, nature walks, and evening programs are given by National Park Service personnel.

### CAVE TRIPS

Historic Tour – Trips depart at 9:00, 11:00 a.m. and 1:00, 3:00 p.m. Approximate walking distance 2 miles, price \$1.50 per person age 16 and over. Rest room available. Largest cave rooms, Indian Mummy, War of 1812 mining operation. Limited to 200 persons per tour.

Frozen Niagara Tour – Trips depart at 9:00, 10:00 a.m., 12:00 noon and 2:00, 4:00 p.m. Price \$2.00, persons under 16 pay a 50c bus fee only. Length of tour about one hour. Stalactites and stalagmites. Limited to 160 persons per tour.

Scenic Tour – Trip departs at 11:30 a.m. Price \$2.00, persons under 16 pay a 50c bus fee only. Lunch is available in the Snowball Room one hour after start of tour. Length of tour is four hours, rest rooms available. Gypsum, long winding passages, exits through Frozen Niagara. A strenuous four mile walk with numerous hills to climb. Limited to 240 persons per tour.

Lantern Tour – This special, unique three mile tour by lantern light departs at 12:00 noon on Saturdays and Sundays only. Rest room not available. Price \$2.00 for all persons which

includes transportation. Length of tour 3 hours. Travertine deposits, historic features. Limited to 40 persons per tour.

### NATURE WALKS

Saturdays at 2:00 p.m. Meet in Amphitheater. Join a Park Naturalist for a two hour walk through a hardwood forest.

### EVENING PROGRAMS

Illustrated slide programs are given at 7:30 p.m. on Saturdays in the amphitheater or the Visitor Center during inclement weather. Check campground bulletin boards and the Visitor Center Information Desk for topics.

### OVERNIGHT FACILITIES

The campground is open the year around. Each site has a picnic table and a fireplace. There are no trailer hookups. A comfort station is located in each camping loop and one trailer sewage disposal station is available. Camping is on a first-come basis and is permitted only in designated sites. Showers, self-service laundry, and the campers supply store are closed from late fall until spring. The picnic area is closed during winter but you are welcome to picnic in the campground. National Park Concessions, Inc., Mammoth Cave, Kentucky, operates hotel accommodations in the park throughout the year.

## OTHER ACTIVITIES

Joppa Ridge Motor Nature Road – A two mile one-way primitive gravel road that begins off the road to the Green River. Obtain a guide leaflet at the Visitor Center or at the beginning of the road.

Cave Island Nature Trail – This self-guiding nature trail begins and ends near the Historic Cave Entrance. It is a woodland trail one mile in length. Follow the path down the hill between the Visitor Center and the Hotel.

Turnhole Bend Trail – This scenic trail begins at the parking area on Kentucky Route 70 West. A pleasant walk will take you to overlooks along Green River.

Cedar Sink Trail – This mile and a half walk begins at the parking area on Kentucky Route 422 and leads to a large sinkhole. Other trails are shown on the map in the park folder.

Miss Green River Boat Trip – A one hour scenic cruise on the Green River. Purchase tickets from the concessioner in the Visitor Center lobby. Cruises daily from early May until late October.

*“We abuse land because we regard it as a commodity belonging to us. When we see land as a community to which we belong, we may begin to use it with love and respect”.*

Aldo Leopold  
A Sand County Almanac