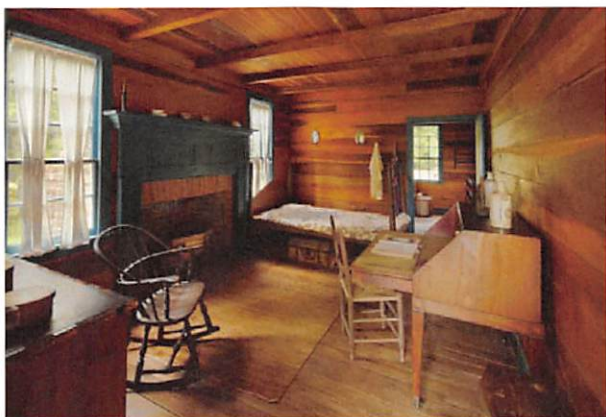


National Park Service
U.S. Department of the Interior

Natchez Trace Parkway
Mississippi, Alabama, Tennessee



Mount Locust



NPS/© Marc Muench

Mount Locust, milepost 15.5 on the Natchez Trace Parkway.

Built in 1779, Mount Locust is the oldest surviving stand (inn) on the Natchez Trace Parkway. The Parkway, which commemorates the historic travel route from Natchez, Mississippi to Nashville, Tennessee, was most heavily used by the boatmen of the Ohio River Valley. In the late 1700s and early 1800s, this land travel route provided a direct route home for the “Kaintucks”. A day’s walk, or about 15 miles from Natchez, brought them to Mount Locust.

Located on the edge of the wilderness, Mount Locust provided temporary shelter from rain, biting insects, animals, and the occasional outlaw found on the Old Trace. Travelers paid 25 cents for a meal of corn mush and milk and a place to sleep on the porches and grounds.

Today visitors to Mount Locust (milepost 15.5) can walk the grounds, see the home, and walk on the Old Trace. Restrooms, exhibits, an information center, and bookstore are on site. Admission is free.

Upcoming Frontier Days:

Watch pioneer lifestyle demonstrations that include frontier cooking and toys from the early 1800s. See replicas of period-era lodges (tents) that were used by frontiersman for shelter. Frontier Days are usually held the last weekend in October. Call (601) 445-4211 for more information.

Educational Programs by Appointment for Schools and Groups:

- **"Pathway to Parkway"** - A formal slide show on the history of the Natchez Trace Parkway. A "question and answer" session will allow students to interact with a park ranger, while learning about the history of the Natchez Trace.
- **"Stories of the Natchez Trace Outlaws"** Welcome "Mike Fink", as he returns from his travels on the Natchez Trace. Hear about the dangers he encountered and adventures he had while traveling the "Devil's Backbone."
- **"Slavery at Mount Locust"** - Learn about the life of enslaved people at Mount Locust. Also available as a Black History Month Program.
- **"Early Frontier Children"** - An interactive program that includes a demonstration of period toys. Enjoyable for all ages.

To schedule a field trip to Mount Locust at milepost 15.5, or to arrange for a ranger to visit your classroom or group, please call (601) 445-4211 or e-mail NATR_Interpretation@nps.gov.

Open daily from 9:00 a.m. to 4:30 p.m. except for Christmas Day. Admission and daily interpretive house tours are free.

Mount Locust, MS
Milepost 15.5
Natchez Trace Parkway
(601) 445-4211
www.nps.gov/natr