

MAP AND GUIDE
BOK TOWER GARDENS
NATIONAL HISTORIC LANDMARK



LAKE WALES, FLORIDA

WELCOME TO BOK TOWER GARDENS

NATIONAL HISTORIC LANDMARK

*Whether you have just one hour
or a full day, you'll find so
much to experience here.*

*While the influence of the Gardens is best
enjoyed in a non-scripted, leisurely manner,
we recognize that you may have limited or
scheduled time and recommend these visit plans
based on three different time allowances:*

*🌀 1-Hour Visit Plan – Please see those visit areas
noted with 1 in the “Making the Most of Your
Visit” section of this map and in the “Key to Bok
Tower Gardens Grounds.”*

*🌀 2-Hour Visit Plan – Please see those visit areas
noted with 2 in the “Making the Most of Your
Visit” section of this map and in the “Key to Bok
Tower Gardens Grounds.”*

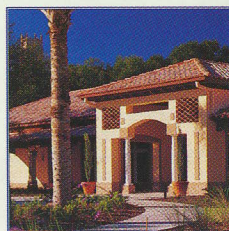
*🌀 3+ Hour Visit Plan – Please see those visit areas
noted with 3+ in the “Making the Most of Your
Visit” section of this map and in the “Key to Bok
Tower Gardens Grounds.”*

MAKING THE MOST OF YOUR VISIT



BOK TOWER GARDENS

NATIONAL HISTORIC LANDMARK



VISITOR CENTER 🌀

*Begin your visit in the Information
and Reception Hall of this building.
Here, docents will answer any
questions you may have, and you
can view an informative nine-minute
orientation film in the theater.*

1 2 3+

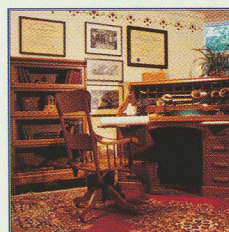


EXHIBIT HALL AND MUSEUM 🌀

*This award-winning exhibit hall gives
you a historical perspective on the life of
Edward W. Bok. Other featured topics
include the story of the Gardens'
creation, the art forms of its famous
craftsmen and a fascinating overview
of the habitat and topography of the
unique Lake Wales Ridge.*

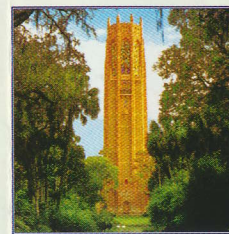
2 3+



GARDENS 🌀

*Frederick Law Olmsted Jr.'s historic
landscape gardens are the heart and
soul of the Gardens. Please see the
“Key to Bok Tower Gardens
Grounds” on the opposite side of
this map for the many ways you
can experience the gardens given
your time allowance.*

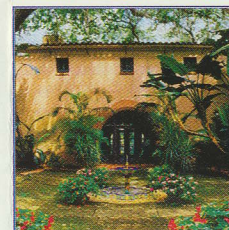
1 2 3+



TOWER 🌀

*The 205-ft. carillon tower—a
National Historic Landmark—is
among the finest in the world. It is
a magnificent focal point for the
gardens and can be enjoyed from afar
at several viewing areas or near its
base for a full appreciation of its
remarkable artistic detail.*

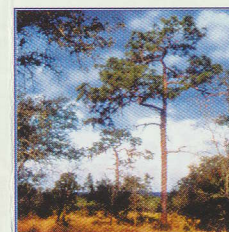
1 2 3+



PINEWOOD ESTATE 🌀

*This classic Florida winter estate,
listed on the National Register of
Historic Places, is adjacent to the
western slope of the Gardens and is
accessible by a footpath. Tour its
grounds and inquire about interior
tours and tickets in the Visitor Center.*

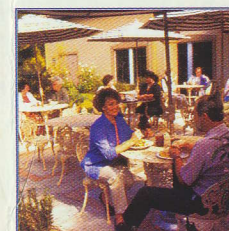
2 3+



PINE RIDGE PRESERVE TRAIL 🌀

*This fascinating 3/4-mile walking trail
allows you to explore the upland
habitat of the Lake Wales Ridge. See
wildlife and rare plant species found
nowhere else in the world. The trail
begins at Window By The Pond.
(Please ask for an informational
brochure.)*

3+

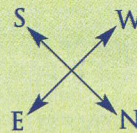


BLUE PALMETTO CAFÉ AND GIFT SHOP 🌀

*Before or after your journey through
the Gardens, enjoy a delicious meal,
snack or beverage at the Blue Palmetto
Café. Also be sure to pick up a
keepsake, gift, music recording or plant
in the Tower &*

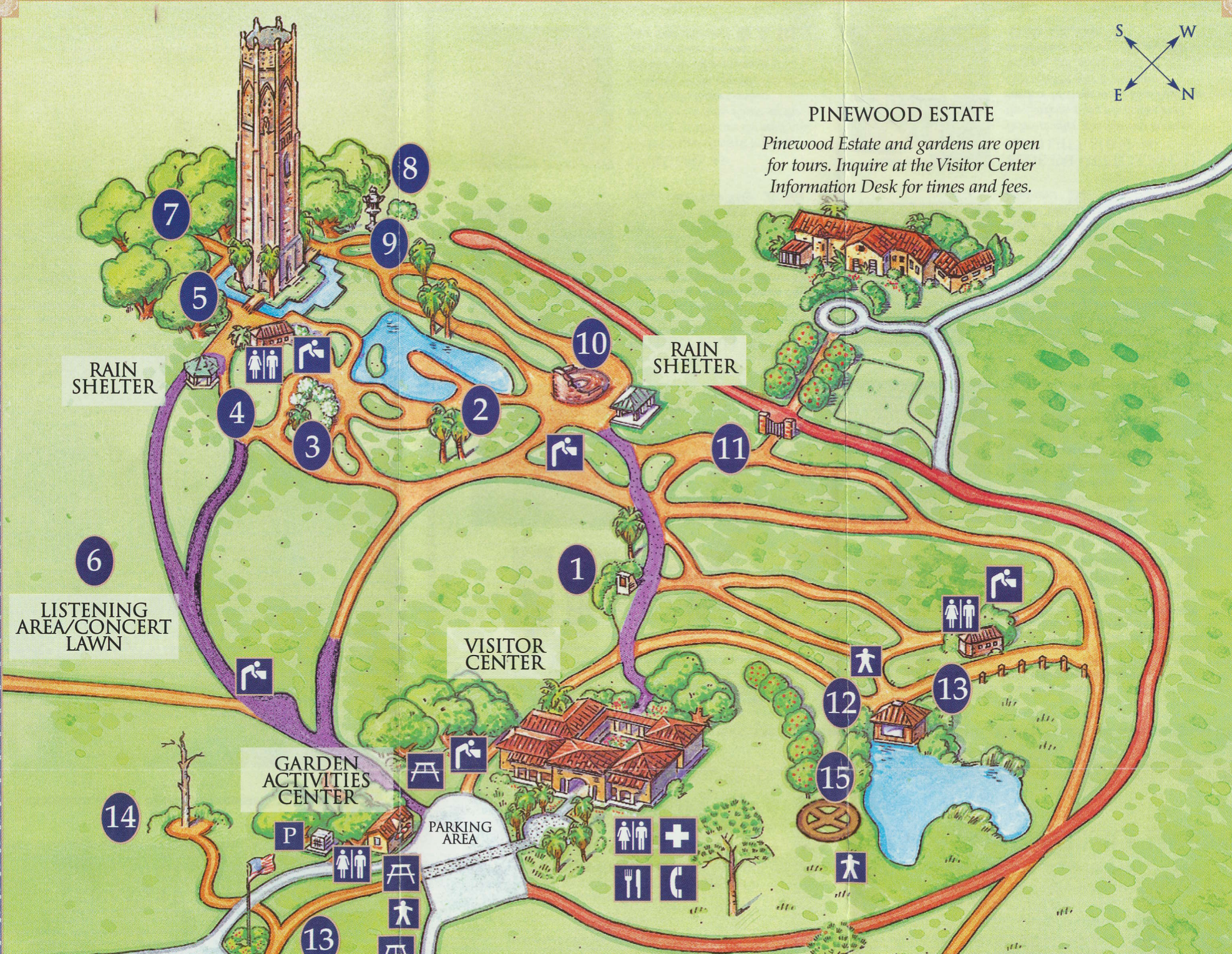
1 2 3+

Garden Gift Shop.



PINEWOOD ESTATE

Pinewood Estate and gardens are open for tours. Inquire at the Visitor Center Information Desk for times and fees.



	PAVED ROAD
	PAVED WALK
	CLAY ROAD
	MULCHED WALK

13

**PINE RIDGE PRESERVE
NATURE TRAIL**
(trail head at Window By The Pond - No.12)

	Restroom		Picnic Tables
	First Aid		Water
	Telephone		Pet Pen
	Restaurant/Café		Family Friendly Areas

KEY TO BOK TOWER GARDENS GROUNDS

- Dedication Plaque** This plaque marks the entrance of the historic garden.
- Reflection Pool** Our most famous vista. View the Singing Tower mirrored in this beautiful pool.
- White Garden** The white flowering backdrop of this garden area makes it a popular wedding spot.
- Round Garden** A charming garden with year-round colorful displays.
- Singing Tower** Built to house the Carillon, the Tower is not accessible to visitors. Designed by Milton B. Medary, its seven levels include the Carillonneur's studio, the Anton Brees Carillon Library, the bell chamber and the playing room. The Tower's decorative motifs reflect Edward Bok's love of nature.
- Quiet Listening Area/ Concert Lawn** This area is designated for those guests who seek solitude in enjoying the Carillon.
- Live Oak Grove** These stately oaks were planted when the Gardens began. The gardens and natural areas cover nearly 250 acres.
- Japanese Lantern** This stone lantern with its dove carvings is a tribute to Edward Bok and reflects his interest in world peace.
- Concert Viewing Area** View the Carillonneur play daily 1 & 3 p.m. concerts from this outdoor video telecast seating area. (Seasonal)
- Exedra and Sunset Overlook** At the elevation of 298 ft., this spot is one of the highest points in peninsular Florida. The marble Exedra is a semi-circular place for conversation and reflection. The view west overlooks land that was the floor of a shallow sea two million years ago and the site where Mr. Bok's dream of the Gardens began during his strolls to enjoy the sunsets.
- St. Francis and Mockingbird Walk** St. Francis, patron saint of the natural world, watches over this shady walk lined with native and exotic plants.
- Window By The Pond** View birds and other wildlife as nature presents them.
- Pine Ridge Preserve Nature Trail** A 3/4-mile trail through a native longleaf pine-turkey oak ecosystem on the Lake Wales Ridge.
- The Knoll** Enjoy another stunning view of the Singing Tower and the surrounding countryside.
- Endangered Plant Garden** See and learn about rare Florida plants in this intriguing circular display.

Visitor services designed to make your visit enjoyable and memorable include:

- A** Information and Reception Hall
Amenities
Restrooms, drinking fountains.

Information Desk

Information on special events, guided tours, group visits and lost and found. Emergency first aid.

Orientation Theater

Start your visit with a short, informative video shown throughout the day.

- B** Exhibit Hall and Museum
This area displays permanent exhibits about Bok Tower Gardens, its history and founder.

KEY TO VISITOR CENTER

9 a.m. to 5 p.m. Daily

- C** Blue Palmetto Café
Serves hot and cold sandwiches, fresh salads, snacks, desserts and beverages. Inside and outside seating available. 9 a.m. to 5 p.m. daily.
- D** Tower & Garden Gift Shop
Books, live plants, mementos of Bok Tower Gardens and other museum-quality gifts plus a mail drop for stamped mail. Mobility carts, wheelchairs and strollers also available.
- Pet Pen*
Pets must remain outside the gardens. Short-term pet care is available. Ask in the Tower & Garden Gift Shop.
- E** Information Desk
Offers general visitor, membership, tour tickets and special event assistance



GARDENS

The informal woodland gardens complement the Florida native live oak hammock with a mix of native and exotic plants, typifying the work of the famous Olmsted Brothers firm.



The gardens, which contain more than 1,000 plant types, were designed as a meditative woodland landscape and nature preserve.



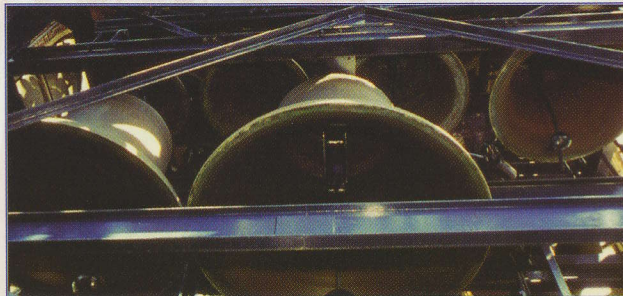
Paths meander through open spaces and plantings to create tranquil resting spots with picturesque vistas of the Tower and the Florida countryside. Please see the map key for directions to the specific feature gardens.

CARILLON MUSIC

Daily Carillon Concerts
1 and 3 p.m.

The carillon delights visitors with 30-minute concerts every day. Brief carillon selections heard throughout the day feature state-of-the-art digital recordings of live performances on the Bok Singing Tower carillon.

Housed in a majestic marble and coquina belltower, the carillon at Bok Tower Gardens consists of 60 bronze bells ranging in weight from 16 pounds to nearly 12 tons. It is one of four carillons in Florida.



Quiet is requested during the carillon concerts.

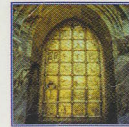
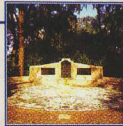
ART, ARCHITECTURE & MONUMENTS



TOWER Enjoy this landmark, designed by architect Milton B. Medary, from afar or see its remarkable sculpted and ceramic detail up close near its base.

EXEDRA

This gift from Mr. Bok's winter neighbors, designed by sculptor Lee Lawrie, is of Greek influence and faces a beautiful panoramic view to the west.



DECORATIVE METALWORK

Near the Tower base, view the beautiful work of famed metalworker Samuel Yellin – including the gates to the Tower, the Great Brass Door and the sundial.

JAPANESE LANTERN

This intriguing nine-foot memorial gift to Mr. Bok was crafted in Japan and sits in sight of his grave.



PINEWOOD ESTATE This 12,900-square foot Mediterranean-Style estate and its expansive gardens are on the northwestern side of the Gardens.

THE LIFE OF EDWARD W. BOK

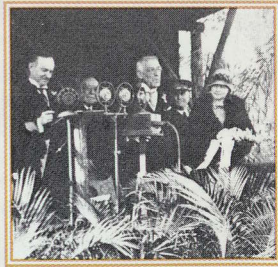


Edward Bok, born in Den Helder, Netherlands in 1863, was only six years old when he came to America. As he embarked on the journey, his grandmother told him, "Make you the world a bit better or more beautiful because you have lived in it." Throughout his years of success, he always remembered those words.

In 1922, Edward Bok decided to create a garden for birds and people in Florida because he was so awed by the beauty of Iron Mountain. He acquired a large tract of sandy soil covered with pines and palmettos and asked America's most famous landscape architect, Frederick Law Olmsted Jr., to transform the area into a gardens that would "touch the soul with its beauty and quiet."

As the transformation proceeded, Mr. Bok decided to add a carillon tower to be a visual and aural centerpiece for the garden. In 1929, the "Mountain Lake Gardens and Singing Tower" was dedicated by President Calvin Coolidge as Edward Bok's gift for the visitation of the American people.

Learn the story of Mr. Bok's life and see several of his collections in the Visitor Center's museum. Mr. Bok's burial place is located on the North side of the Tower, directly in front of the Great Brass Door.



President Calvin Coolidge
and Mr. Bok, 1929
dedication ceremony.

MORE ABOUT BOK TOWER GARDENS

Bok Tower Gardens admits visitors from 8 a.m. to 5 p.m., 365 days a year. The Visitor Center is open from 9 a.m. to 5 p.m. The Gardens closes at 6 p.m.

Mission

Bok Tower Gardens seeks to carry out Edward W. Bok's founding inspiration

Wherever your lives may be cast, make you the world a bit better or more beautiful because you have lived in it

by preserving and sharing the Gardens' beauty, environment, architecture, music, art and history, and by inspiring others to carry on the tradition.

Be A Supporting Friend

Your contribution to the "Friends of Bok Tower Gardens" supports our programs and mission. Membership benefits include free admission, discounts in the Blue Palmetto Café and Tower & Garden Gift Shop, educational programs and more! You also can help preserve the Gardens with tax deductible gifts and bequests. Call the Membership and Development Office at 863.734.1212, for more information.

We thank you for observing these guidelines during your visit.

- 🌀 Quiet is requested to create the best experience for all visitors.
- 🌀 Enjoy looking at and smelling the flowers, fruits, and leaves, but please leave them for others to enjoy.
- 🌀 Feeding or touching wildlife (including squirrels) is not permitted.
- 🌀 Bok Tower Gardens is a smoke-free facility, both indoors and outdoors. Smoking is permitted in the parking lot.
- 🌀 Picnic only in designated areas. Alcoholic beverages are not permitted in the Gardens and picnic areas.
- 🌀 Use recycling and garbage receptacles to dispose of refuse.
- 🌀 Pets, other than guide dogs, are not permitted in the gardens and buildings. Please make arrangements in the Tower & Garden Gift Shop.
- 🌀 Shoes and shirts are required for all.
- 🌀 Park bicycles in bike rack located at head of parking area.
- 🌀 Sports and games should be played elsewhere, not on Garden grounds.
- 🌀 Photographs are for personal use only. Commercial photography and filming require advance written permission.

1151 Tower Boulevard, Lake Wales, FL 33853-3470

863.676.1408 www.boktowergardens.org

Bok Tower Gardens is sponsored in part by the State of Florida, Department of State, Division of Cultural Affairs and the Florida Arts Council, and the National Endowment for the Arts.

50M/CFP/0109