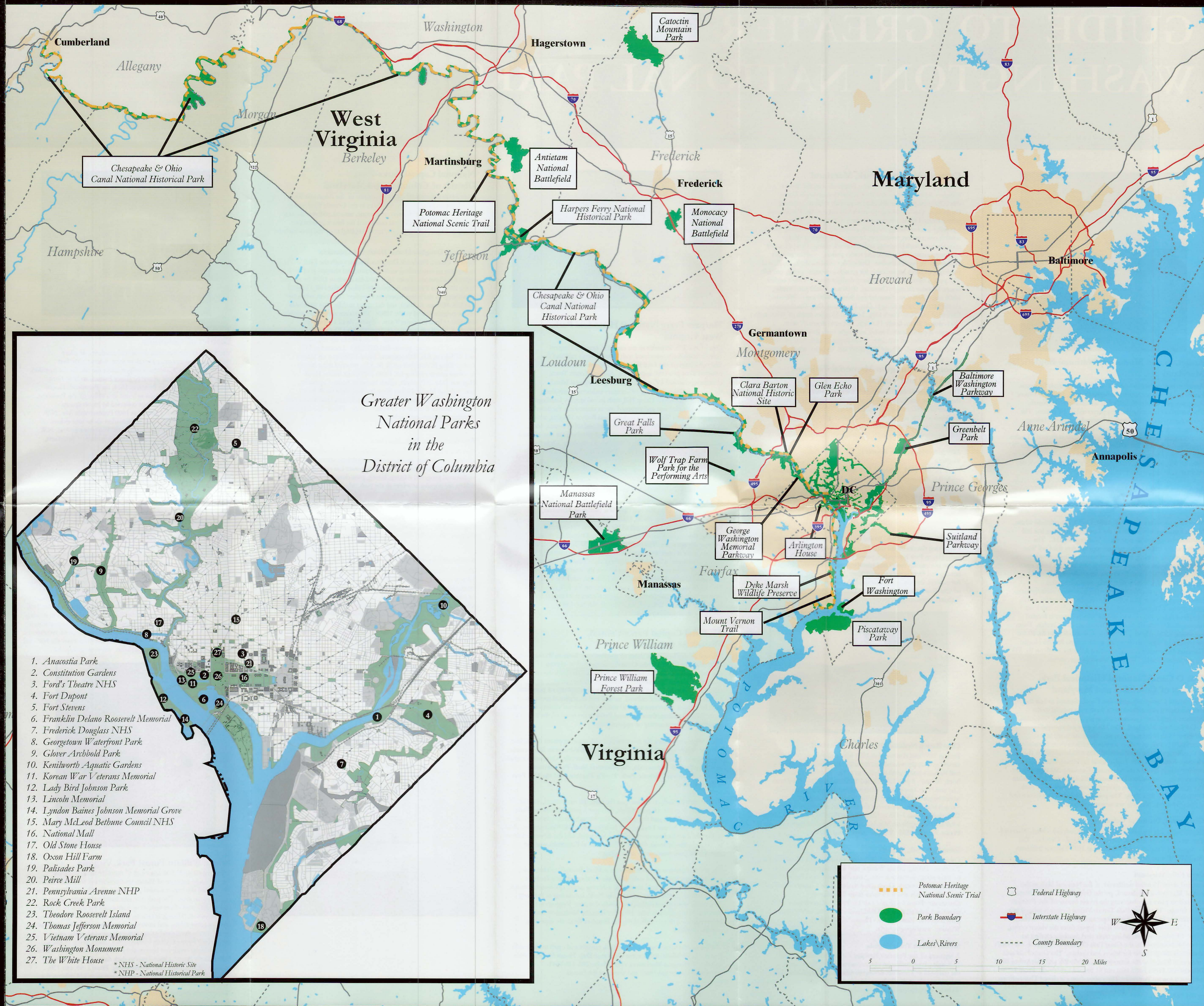
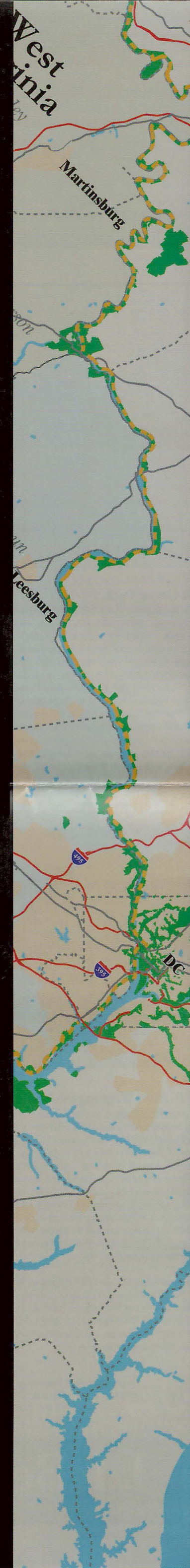
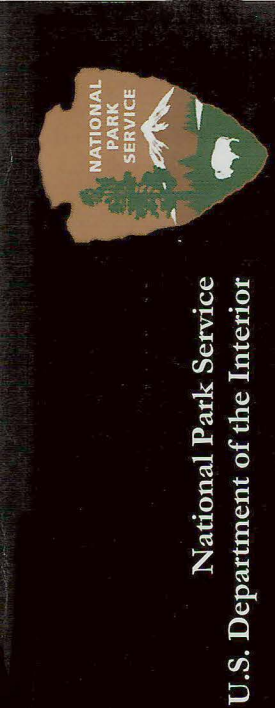
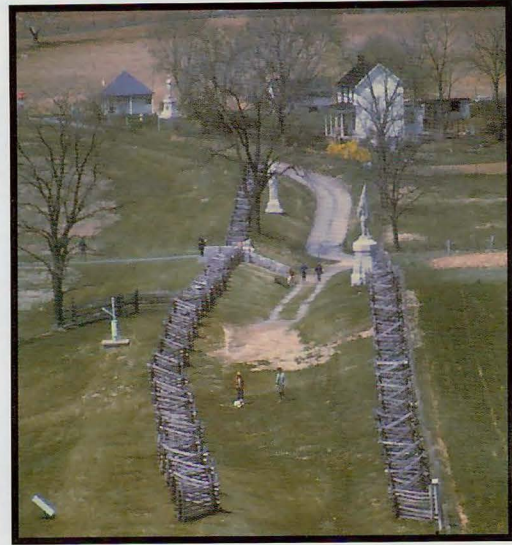


Greater Washington National Parks



GUIDE TO GREATER WASHINGTON NATIONAL PARKS



Antietam and Monocacy National Battlefields, Maryland

Antietam commemorates one of the bloodiest, most ferocious battles in U.S. history, when, on September 17, 1862, the Union Army stopped Robert E. Lee's first advance into the North. The battlefield is among the best preserved in the nation. The visitor center has exhibits and audiovisual programs. Hiking, fishing, cross-country skiing, horseback riding, camping, and picnicking are also popular activities. Antietam is located 25 miles from Frederick, Md. **Directions:** Traveling east on Interstate 70, take exit 29; coming west, exit 29A, and proceed south for ten miles on Md. Route 65. Traveling north-south on Interstate 81, take exit 1, Route 68 east to Route 65. Turn right on Route 65 and travel 5 miles. Visitor center is open 8:30 a.m. - 6 p.m. Daily in summer; 8:30 a.m. - 5:00 p.m. in winter. Closed Thanksgiving, Christmas and New Year's Day. Entrance fee. Phone 301-432-5124. Website: www.nps.gov/anti.

Monocacy preserves the July 9, 1864, Civil War battlefield where Union forces were defeated by the Confederate Army but still marshalled a successful defense of Washington, D.C. The battle was the last Confederate attempt to carry the Civil War into the north. Hiking, biking, bird watching, and cross country skiing are popular activities. Gambrill Mill Visitor Center open daily 8:00 a.m. - 4:30 p.m. (5:30 p.m. on weekends, Memorial Day - Labor Day). Open Wednesday through Sunday, 8:00 a.m. - 4:30 p.m., November - March. Closed Thanksgiving, Christmas, and New Year's Day. **Directions:** From the north, east, or west I-70, take exit 54 (Market Street), then south on Maryland Route 355. Gambrill Mill Visitor Center is located one-tenth of a mile south of the Monocacy River bridge. From the south, I-270, take exit 26 (Urbana), then left onto Rt. 80 for two-tenths of a mile to stop sign, and left onto Rt. 355 North. Gambrill Mill Visitor Center is located 3.7 miles north on Rt. 355. Phone 301-662-3515. Website: www.nps.gov/mono.

C & O Canal National Historical Park, District of Columbia and Maryland

The historic Chesapeake and Ohio Canal, planned to link the nation's capital to the developing West, runs parallel to the Potomac River from Georgetown, in the District of Columbia, to Cumberland, Maryland. The 184.5-mile long towpath preserves both history and nature. There are many access points to the park, as well as six visitor centers from Georgetown to Cumberland. The canal towpath, the backbone of the Potomac Heritage National Scenic Trail, is ideal for biking, hiking, cross country skiing, and observing nature. Canoeing and kayaking are also popular along watered sections of the canal and the adjacent Potomac River. Camping is allowed at several sites in the park. Open sunrise to dark daily. The park headquarters can be reached at 301-739-4200. Website: www.nps.gov/choh.

Georgetown, District of Columbia

Experience a trip back in time on a mule-drawn canal boat. Narrated trips travel through historic Georgetown, April - October. The Georgetown Visitor Center is located at 1057 Thomas Jefferson St., N.W. Phone 202-653-5190.

Great Falls, Maryland

Located about 15 miles northwest of the National Mall, at the end of MacArthur Boulevard, are the Great Falls of the Potomac, an excellent place for observing the scenic beauty of the Potomac River Gorge. The Great Falls Tavern Visitor Center is located in a 19th-century building that once operated as a hotel and lockkeeper's house. Mule-drawn canal boat rides depart from the visitor center, April - October. Several hiking trails start nearby including an accessible boardwalk to the Great Falls Overlook. Access to the canal's towpath is also available for hikers and cyclists. The Great Falls area entrance is located at the intersection of Falls Rd. and MacArthur Blvd. **Directions:** From I-495 take exit 41 toward Carderock. From I-270 take exit 5 toward Potomac. The visitor center is closed Thanksgiving, Christmas and New Year's Day. Entrance Fee. Phone 301-299-3613 or 301-767-3714.

Catoctin Mountain Park, Maryland

Originally created during the Great Depression by the Works Progress Administration and the Civilian Conservation Corps, this 5,700-acre park was designed to provide recreational camps for groups. One of the camps eventually became the Presidential retreat Camp David, which is not open to the public. Catoctin is a popular site for hiking, camping, picnicking, bird watching, fishing, wildlife observation, swimming, biking, cross country skiing, snowshoeing, rock climbing, and horseback riding. Campgrounds have restrooms, grills, tables, and trailer parking. Cabins are also available from April-October. Heated dormitories, dining halls, and conference spaces are available for groups in winter, spring, and fall. The park is open year-round during daylight hours. Visitor center hours: Monday through Thursday, 10:00 a.m. - 4:30 p.m.; Friday, 10:00 a.m. - 5:00 p.m.; Saturday and Sunday, 8:30 a.m. - 5:00 p.m.; closed Martin Luther King Jr. Day, Presidents' Day, Thanksgiving, Christmas and New Year's Day. Located 65 miles north of Washington. **Directions:** From Route 15 north, exit onto Route 77 west, continue approximately 3 miles, turn right onto Park Central Road for visitor center, on the right. From Route 77 east, turn left onto Park Central Road. Phone 301-663-9388. Website: www.nps.gov/cato.

George Washington Memorial Parkway, Maryland and Virginia

The 7,600-acre George Washington Memorial Parkway protects the landscape and native habitat of the Potomac River shoreline and contains more than 25 sites associated with George Washington's life and the life of the nation he helped establish. The park headquarters can be reached at 703-289-2500. Website: www.nps.gov/gwmp. Highlights of the park include:

Arlington House, The Robert E. Lee Memorial, Virginia

From 1831 to 1861, Robert E. Lee and his wife Mary Custis Lee made this Arlington estate their home. After Lee took command of Virginia's army, federal troops occupied Arlington. Located within Arlington National Cemetery, accessible by metro and Tourmobile. Open 9:30 a.m. - 4:40 p.m., daily. Closed Christmas and New Year's Day. Phone 703-557-0613. Website: www.nps.gov/arho.

Belle Haven Park/Dyke Marsh Wildlife Preserve, Virginia
Occupying the site of an early 18th-century tobacco warehouse, Belle Haven Park has trails, a picnic area, and a marina. Dyke Marsh is a swamp forest and cattail marsh that serves as a vital nesting and feeding area to more than 250 species of birds; look for ospreys, herons, and red-winged blackbirds. Located south of Old Town Alexandria along the Parkway. Phone 703-289-2500. Website: www.nps.gov/gwmp/dyke-marsh.html.



Clara Barton National Historic Site, Maryland

Built in 1891 and renovated in 1897 for Clara Barton, this house served as a supply warehouse, American Red Cross headquarters, and Barton's home until she died in 1912. Tours are given on the hour, 10 a.m. - 4 p.m. daily. Closed Thanksgiving Day, Christmas Day and New Year's Day. Located adjacent to Glen Echo Park, which began in 1891 as a National Chautauqua Assembly and today it is a community center for the visual and performing arts. **Directions:** From I-495 to Clara Barton Parkway, then take Cabin John exit; turn right on MacArthur Blvd. and follow signs to entrance. Phone 301-492-6245. Website: www.nps.gov/clba.

Great Falls Park, Virginia

Overlooks include views of the most dramatic series of falls on the Potomac. Hiking, biking, fishing, bird watching, climbing, cross country skiing, horseback riding, kayaking, and whitewater rafting are popular activities. Open dawn to dusk daily. Closed Christmas Day. The park is about 15 miles from Washington. **Directions:** From I-495 take exit 13, Va. 193 (Georgetown Pike) west for 4.2 miles; right on Old Dominion Drive; follow signs to park entrance. Entrance fee. Phone 703-285-2965. Website: www.nps.gov/grfa.

Mount Vernon Trail, Virginia

A segment of the Potomac Heritage National Scenic Trail, the 18.5-mile paved, multi-use trail connects Mount Vernon and the trailhead at Theodore Roosevelt Island. Parking is available at locations along the Parkway. Phone 703-289-2500. Website: www.nps.gov/gwmp/mvt.html.



Harpers Ferry National Historical Park, West Virginia

One of two U.S. armories in the early 19th century, Harpers Ferry is historically associated with John Brown's raid and the first rumblings of the Civil War. Much of the town has been restored to its pre-1860 appearance. Explore Lower Town, containing restored 19th-century buildings; Virginus Island, the ruins of a once-thriving 19th-century industrial town along the Shenandoah River; Camp Hill, with its old armory buildings devastated by civil war and returned use as classrooms for Storer College. Hike to Maryland, Loudoun, and Bolivar Heights, with splendid vistas along the Appalachian Trail and other routes, and access to the C&O Canal. Fishing and rock climbing are also allowed with proper registration. Open 8:30 a.m. - 5 p.m., daily. Closed Thanksgiving, Christmas, and New Year's Day. Entrance fee. Located 65 miles from Washington via I-270 and U.S. 340. Phone 304-535-6298. Website: www.nps.gov/hafe.

Manassas National Battlefield Park, Virginia

The park is the site of the two Civil War battles of Manassas, July 21, 1861, and Aug. 28-30, 1862. Here, Confederate Brig. Gen. Thomas L. Jackson acquired his nickname "Stonewall." Hiking, fishing, bird watching, picnicking, and horseback riding are popular activities. The park is open dawn to dusk daily. The visitor center is open 8:00 a.m. - 5:00 p.m. daily with extended hours in summer. Closed Thanksgiving and Christmas Day. Located 26 miles west of Washington near the intersection of I-66 and Va. 234. **Directions:** From I-66 east, take exit 47B. From I-66 west, take exit 47A. Travel north on Va. 234, through first traffic light. The Henry Hill Visitor Center is located at top of the hill on right. Entrance fee. Phone 703-361-1339. Website: www.nps.gov/mana.

National Capital Parks-Central, District of Columbia

Situated along the eastern shore of the Potomac River in Washington, D.C., National Capital Parks-Central is comprised of **eleven distinct units of the National Park System**. The park has its origin in the historic city of Washington and constitutes the central core of federal lands in the nation's capital, serving a multiplicity of purposes. With over 1,000 acres of cultural, natural and recreational areas, more than 80 historic structures and 150 statues, and annual visitors numbering more than 20 million, these National Parks in the heart of the nation's capital offer a great variety of opportunities.

Visitors can experience the monumental and inspiring places that reflect our democracy's proud heritage, including the **Washington Monument, the Lincoln, Jefferson, Franklin Delano Roosevelt, Vietnam Veterans, and Korean War Memorials, the National Mall, Pennsylvania Avenue, National Historic Park, Ford's Theatre, and the Old Post Office Tower**.

Yet the park is much more than just the mall, the monument, and the memorials. It is also Dupont Circle, Farragut Square, Chinatown Park, West Potomac Park, and the green spaces throughout downtown. It is concerts at the Sylvan Theatre, and Independence Day Celebrations. Add to that the Law Enforcement Officer's Memorial, and the newest addition to the park, the Japanese American Memorial to Patriotism, and the diversity of park resources is astounding.

For active recreation the park includes softball, football, cricket, polo, hockey, rugby, soccer, and volleyball fields, and concession facilities including 45 holes of golf, mini-golf, a driving range, clubhouse, lessons, and snackbar, paddle boats on the Tidal Basin, ice skating at Pershing Park in the winter, and indoor and outdoor tennis. Jogging on the National Mall pathways, bike riding between the Monument and Memorials, or a sunset walk along the Potomac River are especially popular activities.

The major memorials are staffed by park rangers and open to the public 8 a.m. - 12 midnight daily, except Christmas Day. Hours for other sites and the Washington Monument vary. Phone 202-426-6841. Website: www.nps.gov/nacc and www.nps.gov/nama

National Capital Parks-East, District of Columbia and Maryland

Over 8,000 acres across 98 locations east of the Anacostia River have been set aside as National Parks in the Greater Washington area. They offer a wide array of historic, natural, and recreational areas to be enjoyed today and conserved for future generations. Website: <http://www.nps.gov/nace>. Highlights of the park include:

Frederick Douglass Home, District of Columbia

Born in slavery, Frederick Douglass lived through the Civil War to become an outstanding author, orator, and champion of civil rights for all people. From 1877 until his death in 1895, he resided in the 21-room Victorian mansion he called Cedar Hill. Original furnishings in the home represent Douglass' late years, when he was U.S. Minister to Haiti, and the upper middle class standards of the neighborhood in the 1880s. The visitor center has exhibits and film. Open for tours 9 a.m. - 5 p.m., April 15 through October 14; all other times, to 4 p.m. Closed Thanksgiving, Christmas, and New Year's Day. Reservations are required for groups of 5 or more; phone 800-967-2283. Located at 14th and W Streets, S.E. **Directions:** From I-295, exit on Martin Luther King Jr. Ave., left on W St. S.E., proceed three blocks to visitor center parking lot. From I-495, exit Indian Head Highway (Md. 210) north, which becomes South Capitol St., bear right on Martin Luther King Jr., Ave., right on W St. to parking lot. From the Anacostia Station/Green Line Metro, take the Mt. Rainier B-2 bus to Douglass home. Phone 202-426-5961. Website: www.nps.gov/frdo.

Fort Washington Park, Maryland

Fort Washington illustrates a significant portion from 1808 to 1922 of American history and the continuing debate about how best to defend the United States. The visitor center has exhibits and an audiovisual program. Hiking, biking, picnicking, bird watching and fishing are popular activities in the park, which lies on the Maryland shore of the Potomac River, southeast of Washington, D.C. Park grounds open 8 a.m. to dusk, daily. Historic Fort and visitor center, open 9:00 a.m. - 5:00 p.m. daily, April - September, and to 4:30 p.m. daily October - March. **Directions:** From I-495, exit Indian Head Highway (Md. 210), south, then right onto Fort Washington Road to the park. Phone 301-763-4600. Website: www.nps.gov/fowa.

Kenilworth Aquatic Gardens, District of Columbia

The only National Park devoted entirely to water-loving plants, this 12-acre sanctuary features exotic water lilies and lotuses. Located on the east bank of the Anacostia River seven miles upstream from its junction with the Potomac, this mosaic of shallow ponds and dikes forms an island of green next to the busy neighborhoods of Washington's far northeast corner. An elevated boardwalk from the corner of the ponds provides access to a portion of the Kenilworth marsh, perhaps the best example of the once abundant Anacostia tidal marshes. The park is open 7 a.m. - 4 p.m. daily; the visitor center, 8 a.m. - 4 p.m. Closed Thanksgiving, Christmas, and New Year's Day. **Directions:** Take Kenilworth Avenue to Burroughs Ave. west to Lee St., follow Lee St. to 40th St., take 40th St. to the end, turn right onto Anacostia Ave. and follow approx. 1/8 mile to park entrance on the left. Deanwood/Orange Line Metro. Phone 202-426-6905. Website: www.nps.gov/kepa.



The White House and President's Park, District of Columbia

The White House has been the official residence of every American President since President John Adams. Our first President George Washington helped select the site for the mansion. The original design was drawn by James Hoban, an Irish-born architect. Burned by the British in 1814, the President's House was then rebuilt and restored as home and office of the President. The house contains furnishings collected by its occupants throughout its history. Located at 1600 Pennsylvania Ave., N.W. Phone 202-456-7041 for latest information about tour tickets. The White House Visitor Center at 1450 Pennsylvania Ave., N.W. is open 7:30 a.m. - 4:00 p.m. daily. For a schedule of programs, exhibits, and lectures, phone 202-208-1631. Website: www.nps.gov/whho.

Potomac Heritage National Scenic Trail, District of Columbia, Maryland, Virginia, Pennsylvania

Between the mouth of the Potomac River at the Chesapeake Bay and the Laurel Highlands of western Pennsylvania, the Potomac Heritage Trail corridor encompasses a variety of landscapes, diverse communities and the Nation's capital. The terrain includes tidewater marshlands, the rolling foothills of the Piedmont, the ridges and valleys of the Blue Ridge and the Allegheny Plateau. The corridor offers countless opportunities to explore exceptional historic sites, natural areas and nationally-significant transportation routes. Recreational possibilities include hiking, bicycling, horseback riding, canoeing, kayaking, and fishing. With the C & O Canal Towpath in the District of Columbia and Maryland and the Mount Vernon Trail in northern Virginia as recognized segments of the Trail in the Greater Washington area, the Trail corridor designation is being used by local governments, state agencies and citizen organizations to establish connections between and among a wide range of recreational and educational resources. For more information contact the National Park Service at 304-535-4014. Website: www.nps.gov/pohe.



Prince William Forest Park, Virginia

With more than 17,000 acres and 37 miles of trails, this park is the greatest expanse of Piedmont forest in the National Park System and the largest natural park area in the Greater Washington metropolitan area. The park provides habitat for native plants and wildlife, and offers visitors opportunities for outdoor solitude and recreation. Hiking, bicycling, fishing, bird watching, camping, cross-country skiing, and snowshoeing are popular. The park has picnic sites, a family and group tent campground, rustic cabin camps built by the Civilian Conservation Corps in the 1930s, a trailer campground, and backcountry camping in the Chopawamsic Backcountry Area. Open dawn to dusk daily. Located 32 miles south of Washington, D.C. **Directions:** From I-95, exit 150, Triangle, Virginia. The park entrance is less than 1/4 mile on the right hand side of Va. route 619 west. Phone 703-221-7181. Website: www.nps.gov/prwi.



Rock Creek Park, District of Columbia

Established in 1890, Rock Creek Park is one of the nation's oldest National Parks. Within 3,200 acres is offered 29 miles of hiking trails, 11 miles of bridle trails, horse rentals, tennis courts, an 18-hole golf course, athletic fields, dozens of picnic areas, and, at Thompson's Boat House, rentals of canoes and rowboats. (Phone 202-333-4861). The Park is open during daylight hours, daily. Contact facilities within the park for specific hours of operation. Most are closed on 4th of July, Thanksgiving, Christmas, and New Year's Day. The Rock Creek Nature Center offers guided nature walks daily and has exhibits and planetarium shows. (Phone 202-426-6828) Programs at Peirce Mill illustrate the working of a 19th century gristmill. In Georgetown, tours are given of the 18th century Old Stone House, the oldest dwelling in Washington D.C. The 4,200 seat Carter Barron Amphitheatre offers a variety of musical shows, ballet, and Shakespeare plays during the summer. For further information phone Park headquarters at 202-282-1063. Website: www.nps.gov/rocr.



The Greater Washington National Parks Fund

The Greater Washington National Parks Fund has been created to help support the National Park Service in its role as stewards of the Greater Washington National Parks. The Fund is an initiative of the National Park Foundation, the Congressionally-chartered nonprofit partner of America's National Parks. Created in 1967, the National Park Foundation strengthens the enduring connection between the American people and their National Parks by raising private funds, making strategic grants, creating innovative partnerships, and increasing public awareness. The Fund exists to provide additional opportunities for citizen involvement in the Greater Washington National Parks through financial support, and volunteer and educational opportunities.

For more information about **The Greater Washington National Parks Fund** and how you can get involved, contact the National Park Foundation/Greater Washington National Parks Fund, 11 Dupont Circle, Suite 600, Washington, DC 20036. Phone 202-238-4170. Email: GreaterWashington@nationalparks.org. Website: www.nationalparks.org.



The National Park Foundation, chartered by Congress, strengthens the enduring connection between the American people and their National Parks.

L.L.Bean
Celebrating 90 Years in the Outdoors