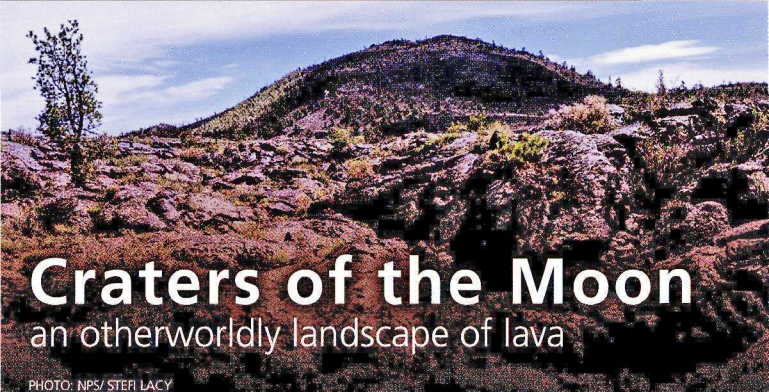


City of Rocks

a "silent city" of ancient granite spires

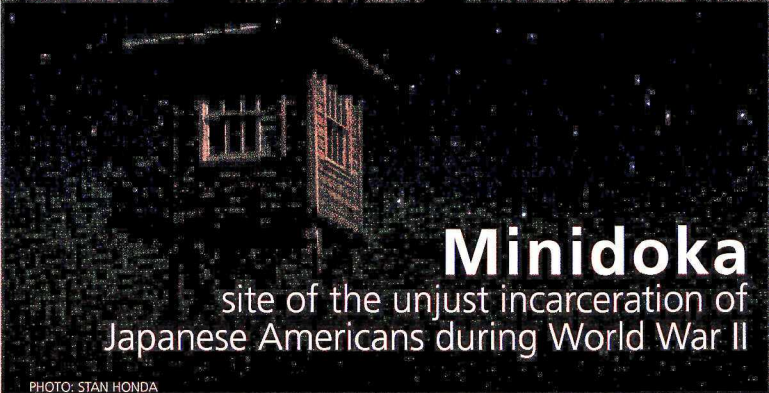
PHOTO: NPS/WALLACE KECK



Craters of the Moon

an otherworldly landscape of lava

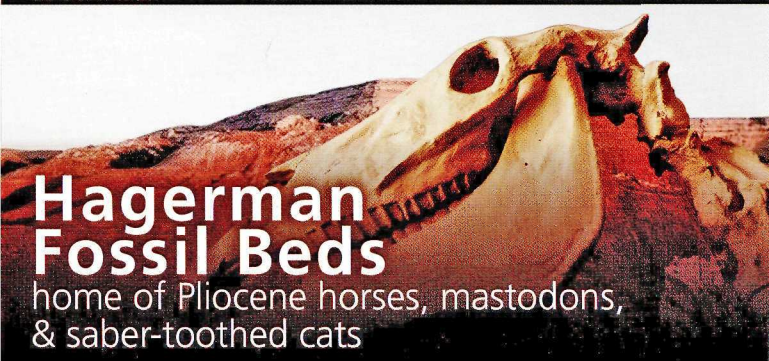
PHOTO: NPS/STEF LACY



Minidoka

site of the unjust incarceration of Japanese Americans during World War II

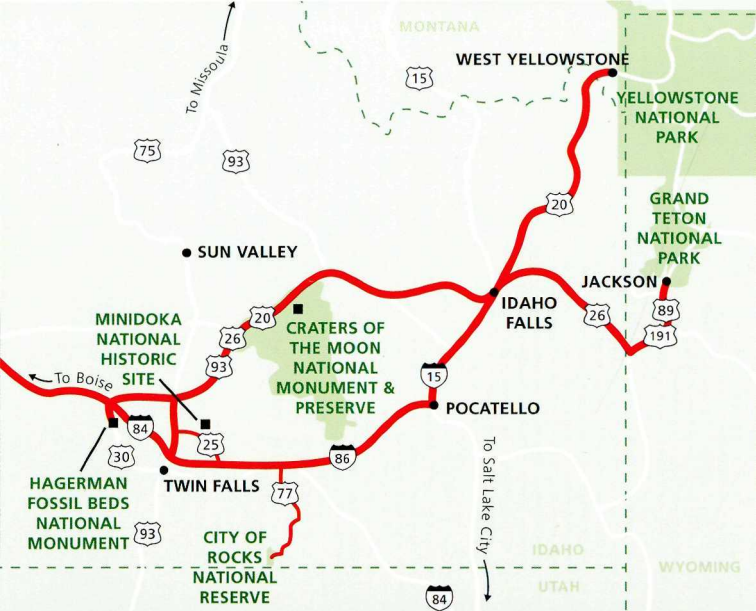
PHOTO: STAN HONDA



Hagerman Fossil Beds

home of Pliocene horses, mastodons,
& saber-toothed cats

PHOTO: NPS



City of Rocks National Reserve

Billion-year-old spires of granite tower over the high desert. The reserve also protects a portion of the California Trail, where emigrants marked their passage with axle grease at Register Rock. Camping, rock climbing, and trails for hiking or horseback riding provide exceptional recreational opportunities.

3035 Elba-Almo Road, Almo, Idaho

(208) 824-5901 www.nps.gov/ciro

Craters of the Moon National Monument & Preserve

Explore one of the largest volcanic rift systems in North America. A sea of lava flows contains volcanic craters, lava tube caves, and spatter cones. Hiking and camping are available among these weird and scenic lava features. Ranger programs are offered in the summer and cross-country skiing and snowshoeing are available in the winter.

1266 Craters Loop Road, Arco, Idaho

(208) 527-1300 www.nps.gov/crmo

Minidoka National Historic Site

During World War II, over 120,000 Japanese Americans were forcibly removed from the West Coast and incarcerated without due process of law. Minidoka provides an opportunity to reflect on the resilience of a community and the importance of protecting our civil liberties.

1428 Hunt Road, Jerome, Idaho

(208) 825-4169 www.nps.gov/miin

Hagerman Fossil Beds National Monument

Investigate one of the richest deposits of Pliocene fossils in the world. Fossils of saber-toothed cats, mastodons, and the Hagerman horse are on display at the new Thousand Springs Visitor Center, staffed with our partners, Idaho Department of Parks & Recreation. Enjoy picnicking, boating, and hiking at the six units of Thousand Springs State Park and hike along the historic Oregon Trail at the monument.

17970 US Hwy 30, Hagerman, Idaho

(208) 933-4105 www.nps.gov/hafo