

Anahuac

National Wildlife Refuge Waterfowl Hunting Regulations 2022–2023



Hunting units include the East Unit, Middleton Tract, and the Pace Tract. Consult specific sections below for information on open hunting days as they vary across units. Hunting is limited to ducks, geese, and coots and is only permitted in accordance with all federal regulations in addition to Texas state, and local laws. NOTE: Opening of hunting units can change based on weather, marsh conditions, or safety concerns. Emergency changes to regulations will be posted on the Anahuac NWR webpage www.fws.gov/refuge/anahuac/.

Failure to abide by or excessive violations of these refuge specific hunting regulations, federal regulations or state laws may result in revocation of your hunting privileges by the refuge manager. The regulations listed are a supplement to the general Regulations set forth in Title 50, Code of Federal Regulations which govern all activities on National Wildlife Refuges.

Refuge Specific Hunting Regulations

- You must possess and carry a current signed refuge hunting authorization while hunting on all hunt units of the refuge.
- Hunters may not enter the East Unit, Middleton, or Pace Tract prior to 4:00 am or later than 30 minutes before legal shooting time. Hunters must leave hunt units by 12:30 pm.
- Hunters may not shoot before legal shooting time, and must stop hunting by 12:00 pm.
- Hunters age 17 or younger must be under the supervision of an adult age 18 or older.
- Hunters must maintain a minimum distance of 200 yards from other hunting groups.
- Individual hunters within a group must remain within 50 feet from one another.
- Scouting on any unit is only permitted from 7am–6:30pm October 22–28, 2021. You may not scout at any other time.
- In order to hunt during the state Youth Waterfowl Hunt October 30–31, 2021, hunters must be 16 years of age or younger and under the direct supervision of an adult age 18 or older.
- The refuge regulations stay in effect during Light Goose Conservation Order.

We permit the following:

- Possession of firearms in accordance with federal and state laws.
- Non-motorized boats (kayaks, canoes, etc.)
- Temporary portable blinds. You must remove all blinds, decoys, boats, spent shells, chairs, and equipment from the refuge at the end of each day's hunt.
- Use of retriever dogs is encouraged. They must be under the control of their handlers at all times.

We prohibit the following:

- Driving and parking on levees and non-designated roads. Parked vehicles must not block the roadway or access to levees.
- Any form of blocking the following: roadways, gates, trails, catwalks, boat ramps, or any facility.
- Discharge of a firearm for purposes other than waterfowl hunting.
- Use or possession of toxic shot, e.g. lead, including those shells in vehicles and boats.
- Individual possession of more than 50 approved shotgun shells (including within boats and vehicles).
- Hunting from a roadway.
- Mooring to water control structures.
- Operation of motorized boats on or through emergent wetland vegetation and mudflats.
- Boat motors greater than 25 HP in the hunting units.
- Motorized boats powered by air-cooled or radiator-cooled engines with a propeller larger than 9 inches in diameter in the hunting units.
- Airboats, marsh buggies, ATV's/UTV's, and personal watercraft (PWC).
- Possession or being under the influence of alcoholic beverages or drugs. Possession of drug paraphernalia.
- Drone use.
- Open flames and stoves.
- Construction, use, or occupancy of permanent hunting blinds.
- Deliberate destruction, cutting, or harvesting of refuge plants. Introduction of non-native, invasive, or exotic plants.
- Use of plastic flagging, reflectors, or reflective tape. Leaving personal property, trash, or spent shells.

Anahuac NWR

Waterfowl Hunting Authorization 2022–2023

When signed and carried, this authorization will serve as your general acknowledgment of rules for this season. This authorization is valid only when signed below and must be carried with you at all times while on the refuge.

Expires March 1, 2023

Signature (authorizations are not transferable)

East Unit (Fee Area)

Persons 17 years of age and older on the East Unit are required to pay either the daily fee (\$10) or annual fee (\$40). If entering by boat, the annual fee is mandatory if age 18 or older. Hunters traveling by vehicle to the East Unit are required to 1) hold a prior reservation, and 2) check-in and check-out of the check station off of FM 1985. The entrance gate to the East Unit on FM 1985 will open at 4:00 am on the morning of the hunt during Regular Waterfowl Season (this time will vary during Light Goose Season). No hunters will be allowed to enter the refuge prior to this time, or within 30 minutes of shooting time. All reservable ponds and numbered fields have a maximum capacity of six individuals, only four of which can be adults (18 years or older).

Hunters traveling by motorized boat to the East Unit are prohibited from hunting the reservable ponds and numbered fields. Motorized boat access to ponds North of Jackson Ditch should be done via Oyster and Onion Bayous by launching from the Oyster Bayou boat ramp on Anahuac NWR. Motorized boats are prohibited from launching at the East Unit.

East Unit Reservations: *Unless further notice is posted, due to COVID-19, reservations will only be available by phone at 409-267-5138.* Hunters will reserve a hunt pond or numbered field through this reservation system. *Reservations will only be taken 9:00 am–1:00 pm on the Friday prior to the hunt each week. *TIP please have your top 10 pond choices ready ahead of time** Note: this process may change, depending on weather and marsh conditions and COVID/safety concerns. Reservations will be held until either all designated hunt locations are filled up or time expires. Reservations will be for a single day and are limited to one per caller. Reservation holders must be 18 years of age or older. Multiple reservations require multiple phone calls. On the day of the hunt, at least one person on the reservation must be present in the hunting party. The handicap accessible hunt pond is reserved exclusively for individuals with an ID, hang tag, or license plate displaying a disabled designation, which must be presented when checking in the morning of the hunt. Reservations are not required during Light Goose Conservation Order.

East Unit (Fee Area), Continued

Open for Hunting: Regular Waterfowl Season: open on Saturdays, Sundays, and Tuesdays. It will be determined each season if the Light Goose Conservation Order will be open on the East Unit. If the Light Goose Conservation Order is in effect, the East Unit will be open on Saturdays, Sundays, and Tuesdays until February 27, 2022.

Closed for Hunting: Closed during Early Teal Season, Early Canada Goose Season, Thanksgiving Day, November 29 – December 10, Christmas Day, and New Year's Day.

Pace Tract (Non-Fee Area)

Access to the Pace Tract is by boat only.

Open for Hunting: Early Teal Season: seven days a week. Regular Waterfowl Season: seven days a week. If the Light Goose Conservation Order is in effect, the Pace Tract will be open seven days a week until February 27, 2022.

Closed for Hunting: Closed during Early Canada Goose Season, Thanksgiving Day, November 29 – December 10, Christmas Day, and New Year's Day

Middleton Tract (Non-Fee Area)

Middleton Tract is located between East Bay Bayou and State Highway 124. Walk-in access off of Hwy 124 from the feeder road is difficult. Primary access is by boat. Two boat rollers are located on East Bay Bayou for access to the interior waterways of the Middleton Tract.

Open for Hunting: Early Teal Season: seven days a week. Regular Waterfowl Season: open on Saturdays, Sundays, and Wednesdays. If the Light Goose Conservation Order is in effect, the Middleton Tract will be open seven days a week until February 27, 2022

Closed for Hunting: Closed during the Early Canada Goose Season, Thanksgiving Day, November 29 – December 10, Christmas Day, and New Year's Day.

Signs and Boundaries

The signs below apply to the areas behind the signs. Please respect all refuge signs whenever you see them as you travel throughout the refuge.



National Wildlife Refuge. This sign marks the boundary of the refuge. Consult refuge management for authorized activities.



Area Closed. Certain areas of the refuge are closed to visitors for management purposes. Unauthorized entry beyond this sign is prohibited.



No Hunting Zone. This sign marks the boundary of no hunting areas on the refuge. All hunting is prohibited beyond this sign.



Public Hunting Area. This sign marks the boundaries of the hunting areas.



Waterfowl Hunting Only. This sign marks the boundaries of the waterfowl hunting areas.

Hunting on all National Wildlife Refuges is a privilege, please respect it.

Anahuac National Wildlife Refuge
P.O. Box 278/ 4017 FM 563
Anahuac, TX 77514

409-267-5138 Hunt Specific Reservations/Check Station
409-267-3337 Office
409-267-4314 Fax

www.fws.gov/refuge/anahuac

August 2021



Anahuac National Wildlife Refuge



Anahuac National Wildlife Refuge

P.O. Box 278/ 4017 FM 563

Anahuac, TX 77514

409-267-5138 Hunt Specific Reservations/Check Station

409-267-3337 Office

409-267-4314 Fax








www.fws.gov/refuge/anahuac

August 2021



U.S. FISH AND WILDLIFE SERVICE

Anahuac National Wildlife Refuge,
East Unit Supplemental Hunt Map

-  Levee
-  Road
-  Catwalk
-  Boat Roller
-  Pond
-  Parking Available
-  Handicap Accessible Hunt Blind



0 250 500 1,000
Yards

CLOSED

Check Station
2.15 mi

RESERVOIR ROAD

EAST UNIT ROAD

CLOSED

CLOSED

Reservoir

ONION BAYOU

EAST BAYOU

CHAMBERS

GALVESTON

PRIVATE LAND

ANAHUAC
NATIONAL WILDLIFE
REFUGE

CLOSED

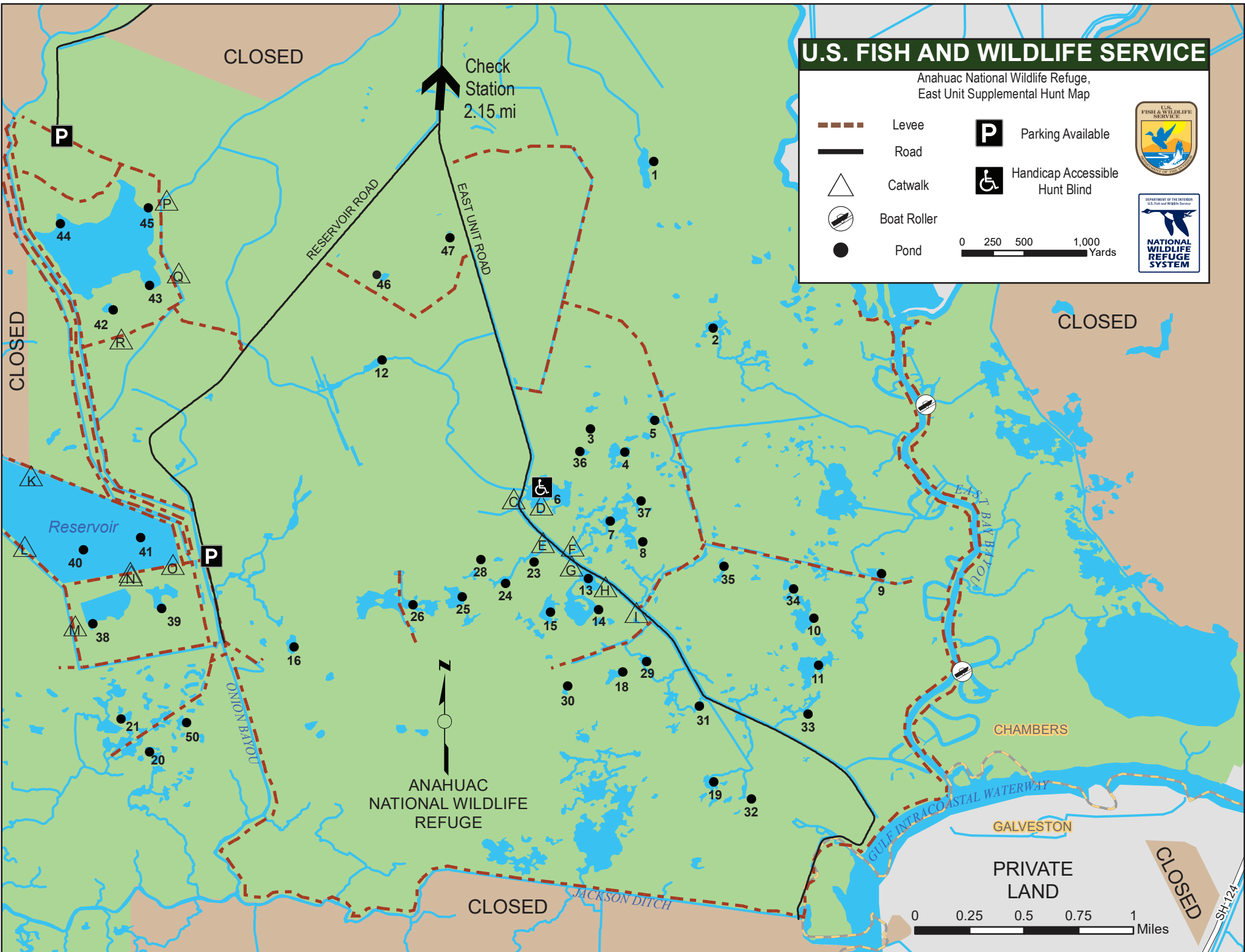
JACKSON DITCH

GULF INTRACOASTAL WATERWAY


0 0.25 0.5 0.75 1
Miles

CLOSED

SH-124



2021-2022 East Unit Hunt Pond Coordinates

Pond	Latitude	Longitude
1	29.637667	-94.429805
2	29.626622	-94.425410
3	29.620148	-94.433945
4	29.618404	-94.431659
5	29.620939	-94.429903
6* 	29.614999	-94.436818
7	29.613881	-94.432672
8	29.612950	-94.430728
9	29.610354	-94.414555
10	29.607429	-94.418719
11	29.604432	-94.418719
12	29.624285	-94.447794
13	29.610274	-94.433624
14	29.608003	-94.433496
15	29.607841	-94.436554
16	29.605481	-94.453360
—	—	—
18	29.603965	-94.431783
19	29.596737	-94.425411
20	29.598588	-94.462733
21	29.600738	-94.464625
22	29.595559	-94.463409
23	29.611661	-94.437444
24	29.609606	-94.439449
25	26.608640	-94.442390
* Handicap Accessible		

Pond	Latitude	Longitude
26	29.608150	-94.445615
—	—	—
28	29.611494	-94.441283
29	29.604567	-94.430168
30	29.602920	-94.435349
31	29.601785	-94.426321
32	29.595383	-94.423322
33	29.601187	-94.419313
34	29.609615	-94.420211
35	29.611160	-94.424975
36	29.618344	-94.434167
37	29.615273	-94.430512
38	29.607194	-94.466343
39	29.608122	-94.461959
40	29.612153	-94.467037
41	29.612609	-94.462854
42	29.627083	-94.465533
43	29.629382	-94.462383
44	29.633529	-94.468632
45	29.634602	-94.462818
46	29.630126	-94.447297
47	29.632971	-94.442976
—	—	—
—	—	—
50	29.600531	-94.460266

These coordinates provide approximate locations for hunt ponds on the East Unit of Anahuac National Wildlife Refuge.

Coordinates for hunt ponds are designated to help hunters have a safe and productive hunt by maintaining the 200 yard minimum distance from other hunting groups.

Anahuac National Wildlife Refuge
P.O. Box 278/ 4017 FM 563
Anahuac, TX 77514

409-267-5138 Hunt Specific Reservations/Check Station
409-267-3337 Office
409-267-4314 Fax

www.fws.gov/refuge/anahuac

August 2021