

Collecting
The collecting or taking of plants, animals, and/or artifacts is prohibited.

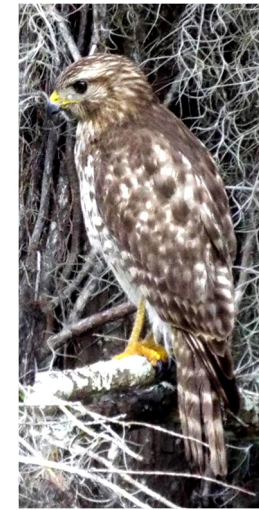
Wildlife
Feeding or disturbing alligators and all other wildlife is prohibited. Unless specifically permitted, the use of spotlights or other artificial light to locate wildlife is prohibited. Releasing wild or domestic animals or plants is prohibited.

Pets
Pets are allowed only at boat ramp parking lots and the Perimeter Levee. This regulation does not apply to official service animals. Only two pets per person are allowed. They must be confined or leashed with no longer than a six foot leash. Pet owners must properly dispose of pet's waste.

Hunting
Hunting is allowed in accordance with current Federal, State and Refuge regulations. All hunters are required to carry a signed General Hunt Permit, which can be found in the refuge's hunting brochure.



Top to bottom: Ibis in sunset, USFWS/Bradley Rosendorf; red-shouldered hawk and cypress swamp sunset, both USFWS/Veronica Kelly.



Fishing
Sport fishing is allowed in designated areas in accordance with current Federal, State, and Refuge regulations except where posted as closed.

Trails
Hiking, bicycling, and equestrian use are allowed on designated trails and roads.

Boating
Only vessels with water-cooled outboard engines and non-motorized vessels are allowed. Obey refuge speed limits of 35 mph and no wake zones of 500 feet around each boat ramp and in the entire crossover canal from the L-7 canal to the L-40 canal at the 20-Mile Bend boat ramp. All vessels are required to fly a 10" x 12" orange flag 10 feet above the vessel waterline so that others may see you.

Aircraft
The use of unmanned aircraft including drones is prohibited.

Firearms
Persons possessing firearms must comply with all Federal and State laws.

Water Sports
Swimming, water skiing, scuba diving, or snorkeling is prohibited.

Vehicles and Speed Limits
The speed limit on all refuge roads is 15 mph unless otherwise posted. Vehicles are not allowed on levees or trails. Unregistered vehicles are prohibited.

Cover photo: American alligator, USFWS/Veronica Kelly

Arthur R. Marshall Loxahatchee National Wildlife Refuge
10216 Lee Road, Boynton Beach, FL 33473
Visitor Center 561/734 8303
Administrative Office 561/732 3684
<https://www.fws.gov/refuge/arthur-r-marshall-loxahatchee>
<http://www.facebook.com/armloxahatcheenwr>

U.S. Fish and Wildlife Service
1 800/344 WILD
<http://www.fws.gov>

Hearing impaired persons may contact the refuge through the federal relay number at 1-800/877 8339.

August 2022



U.S. Fish & Wildlife Service

Arthur R. Marshall Loxahatchee National Wildlife Refuge



The mission of the U.S. Fish and Wildlife Service is working with others to conserve, protect, and enhance fish, wildlife, plants, and their habitats for the continuing benefit of the American people.

National Wildlife Refuge System

Established in 1903 by President Theodore Roosevelt, the National Wildlife Refuge System now consists of more than 560 refuges and more than 850 million acres of land and water across all 50 states and five U.S. territories.

Arthur R. Marshall Loxahatchee National Wildlife Refuge

Welcome to the Arthur R. Marshall Loxahatchee National Wildlife Refuge. The refuge consists of 145,188 acres, or 226 square miles, of Everglades ecosystems including a mosaic of wet prairies, sawgrass ridges, sloughs, tree islands, cattail communities, and a 400-acre cypress swamp that provides habitat — food, water, shelter, and space — for various wildlife species. More than 250 species of birds, 60 species of reptiles and amphibians, 40 species of butterflies, and 20 types of mammals are found on the refuge.

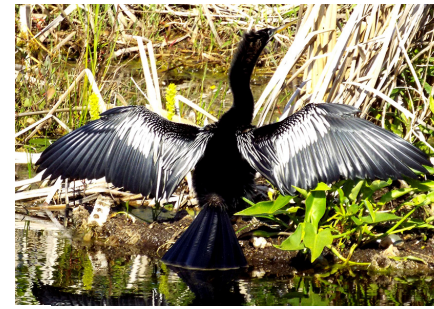
The refuge also provides habitat and protection for endangered and threatened wildlife such as the American alligator, snail kite, and wood stork. Migratory birds such as Neotropical songbirds, secretive marsh birds, shorebirds, raptors, and waterfowl winter at the refuge along with a great variety of year-round resident wading birds and other wildlife. Through refuge programs and facilities, visitors can enjoy a variety of educational and wildlife-oriented recreational opportunities such as guided birdwatching and interpretive wildlife tours.

Hunting

Hunting is a popular recreational opportunity offered on the refuge. Hunting is allowed in designated areas in accordance with current Federal, State, and Refuge regulations. For more information, see the refuge's hunting brochure.

Fishing

Sport fishing is allowed in designated areas in accordance with current Federal, State, and Refuge regulations except where posted as closed. For more information on fishing, see the refuge's website.



photographs. Every winter the refuge is host to an amateur photography contest where photographs are displayed at the refuge visitor center. Please contact the visitor center for more information.

Trails

Almost 50 miles of trails meander along swamps, wetlands, and canals. Take a stroll through the cypress swamp on the accessible 0.4-mile Cypress Swamp Boardwalk. Experience the wildlife on foot or bike along three miles of flat, grassy trails within the wetlands of the C-Impoundments. North of Lee

Road, visitors can walk or bike almost five miles of gravel trails next to wetlands, canals, and cypress swamp habitat in the A-Impoundments. Hiking, bicycling, pet walking, and equestrian use are welcome on the 36 miles of trails on the perimeter levee. These trails are flat, packed gravel; we recommend a mountain or hybrid bike for all trails open to biking.

Environmental Education

The refuge is an excellent place to bring a class to conduct free, hands-on environmental education activities and programs. We can tailor your visit to fit what you are studying in the classroom or teach a pre-planned lesson.

Special Events

Everglades Days

February

Family Fishing Day

June

National Public Lands Day

September

Public Use Regulations

To protect the natural and cultural resources of the refuge and to provide all visitors with a safe and enjoyable recreation experience, please follow these regulations. Please see our website for the most current refuge regulations.

Refuge Hours

The visitor center on Lee Road is open daily from 9 am to 4 pm and is closed on Thanksgiving Day and Christmas Day. The Headquarters Area (including the A, B, and C Impoundments), outdoor facilities, grounds, boat ramp, and trails are open daily from 5 am to 10 pm. Night use is strictly prohibited. The remainder of the refuge is open 24 hours.

Entrance Fee

A daily or annual pass is required. Passes may be purchased seasonally at the fee booths, self-pay stations, or in the visitor center from 9 am to 4 pm daily.



Photos, left to right, top to bottom: young girl with monarch butterfly, Cypress Swamp Boardwalk, and aninga, all USFWS/Veronica Kelly; bobcat, Brad Rosendorf; father and son fishing, USFWS; white-tailed deer, Barry Willette; snapping turtle, USFWS/Lauren Conrad; six-lined racerunner, USFWS/Veronica Kelly

Boating

The Refuge Interior (located west of the L-40 levee) and all perimeter canals are open to non-motorized watercraft (pole, paddle, float). Water-cooled outboard engines are welcome in the perimeter canals and south of latitude line N 26° 27.130. Airboats are allowed in designated areas during specific times of the year by permit only. Boat ramps are located at the end of Lee Road, Loxahatchee Road, and 20-Mile Bend Boat Ramp Road. For more information on boating, see the refuge's website.

Paddling

A paddling trip through the Everglades is an experience to remember. You might see alligators, wading birds,

turtles, snakes, and other wildlife. Paddle along designated canoe trails and within the 141,373 acres of the vast Refuge Interior. Launch from the boat ramps at the end of Lee Road, Loxahatchee Road, or 20-Mile Bend Boat Ramp Road.

Wildlife Observation

Trails, viewing blinds, and observation platforms encourage and enhance wildlife observation. Grab your camera and binoculars and stop by the visitor center to learn of recent wildlife sightings from the front desk staff.

Photography

With all of the wildlife, plants, and beautiful scenery at the refuge, there is always an opportunity to take

ARM Loxahatchee National Wildlife Refuge

For Your Safety

- Do not leave valuables in vehicles. Leave them at home or take them with you.
- Allow time to return to your vehicle and exit before the refuge closes. The Lee Road entrance is open from 5 am - 10 pm daily.
- Be prepared for emergencies and changing weather conditions as well as floating vegetation that may block trails and canals.
- If canoeing or boating, carry water, food, and foul weather clothing. Ensure your boat is equipped with all required safety equipment including life vests, fire extinguisher, whistle or horn, orange flag, emergency light, and first aid kit.

- Make sure your vessel is "seaworthy" and have plenty of fuel. Carry a Global Positioning System (GPS) and a phone, and let a friend or family member know where you are going and when you will return.
- If you become lost or stranded, stay with your boat and call 911. Also call 1-800-307-5789 and leave a message for the refuge's Federal Wildlife Officer.

Inspections

Hunters, anglers, and boaters are subject to inspection of permits, licenses, equipment, bag limits and vehicles, vessels, and their contents by law enforcement officers.

Entrance Fees

Passes may be obtained at the self-pay stations, seasonally at the fee booths, or at the visitor center from 9 am - 4 pm daily. All passes admit the pass holder and any accompanying passengers in a private vehicle.

Refuge 1-Day Pass

\$10 per pass

Refuge Annual Pass

\$25 per pass, valid for 12 months from month of purchase.

Federal Duck Stamp

\$25, valid July 1 - June 30 annually.

Interagency Annual Pass

\$80, valid for 12 months from month purchased.

Interagency Senior Pass

\$20 annual pass

\$80 lifetime pass for citizens or permanent residents of the U.S. age 62 or older.

Interagency Access Pass

Free, a lifetime pass for citizens or permanent residents of the U.S. who have a permanent disability, regardless of age.

Interagency Military Pass

Free, annual pass for active duty military members, valid for 12 months from month issued.

Every Kid Outdoors

Free, annual pass for 4th grade students. Valid from September 1 - August 31.

Commercial Groups

\$25 for 25 or fewer persons
\$50 for 26 or more persons

Special Use Permit

For specialized uses such as group activities, recreational events, or other fees. Application required.

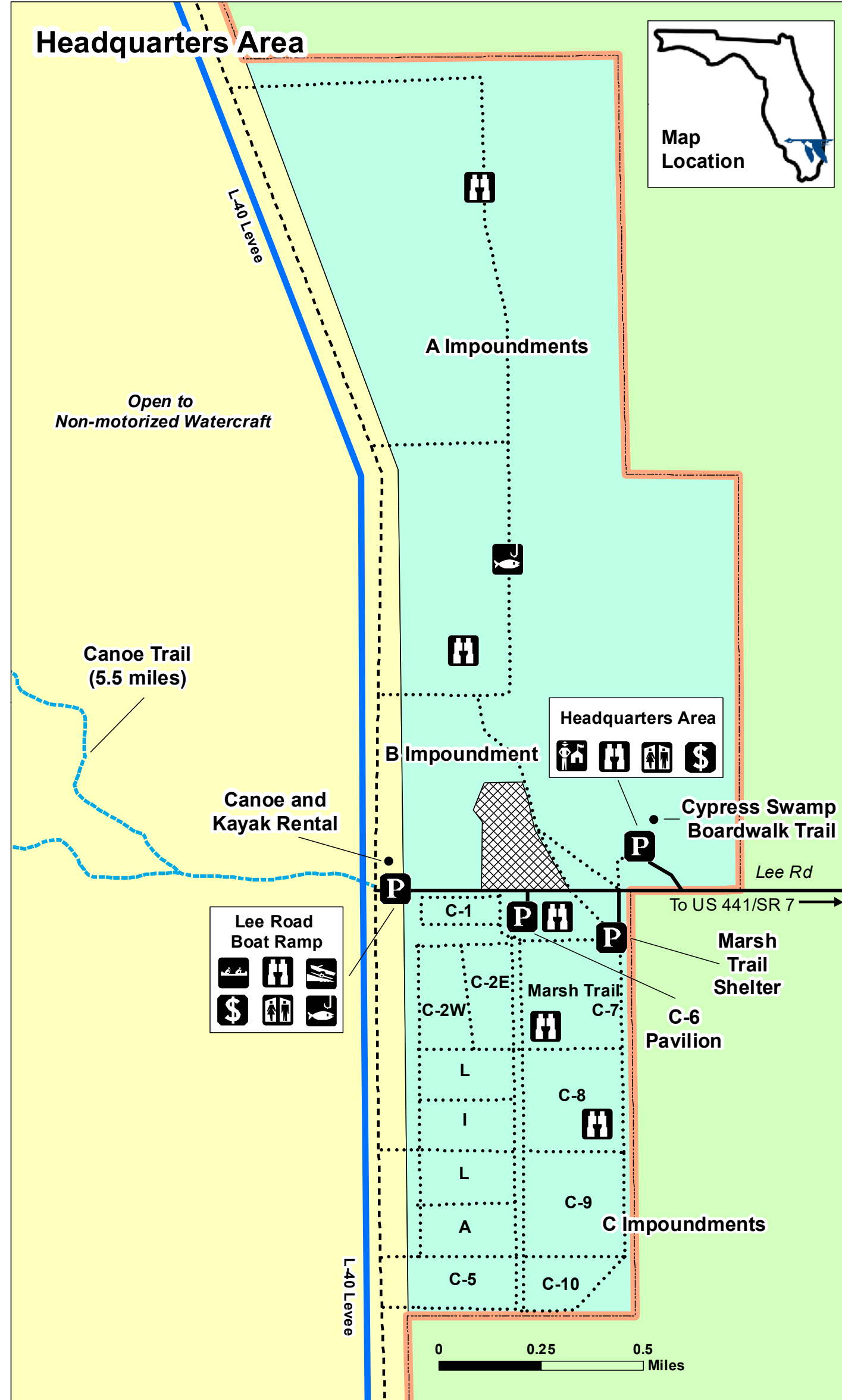
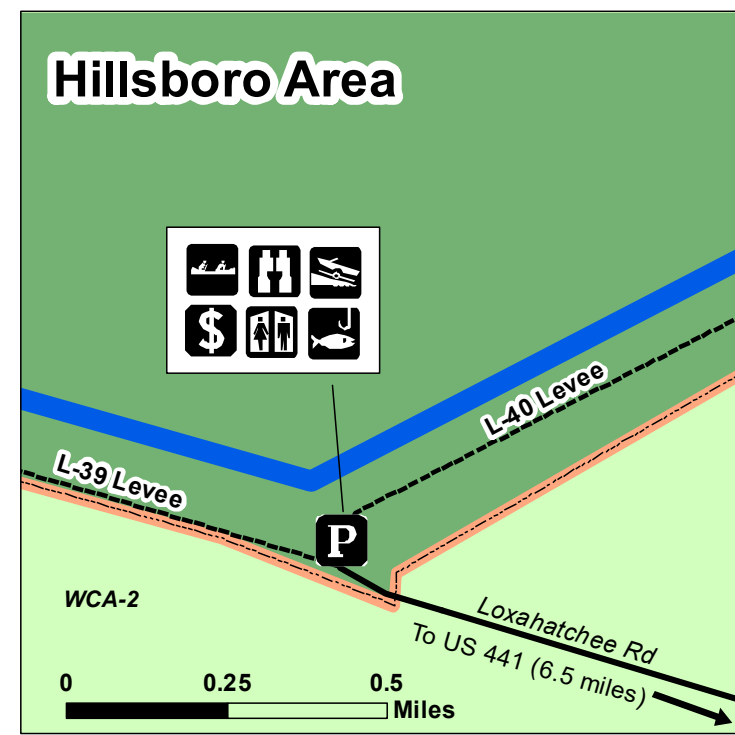
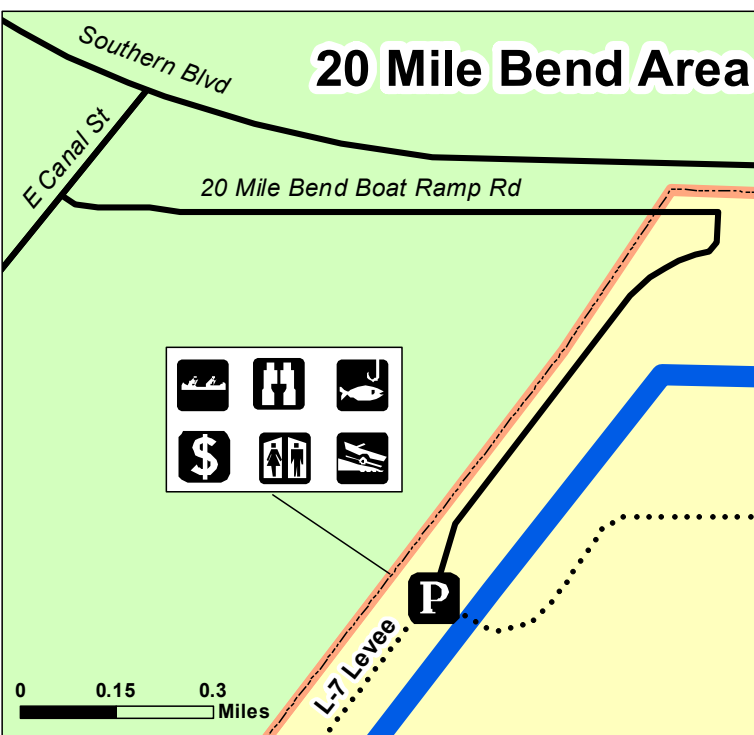
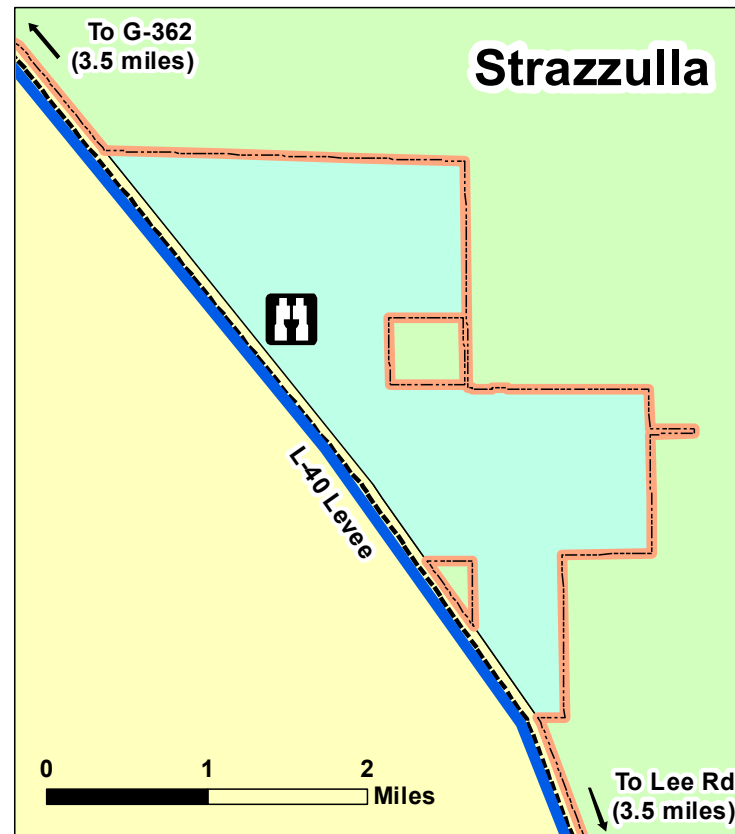
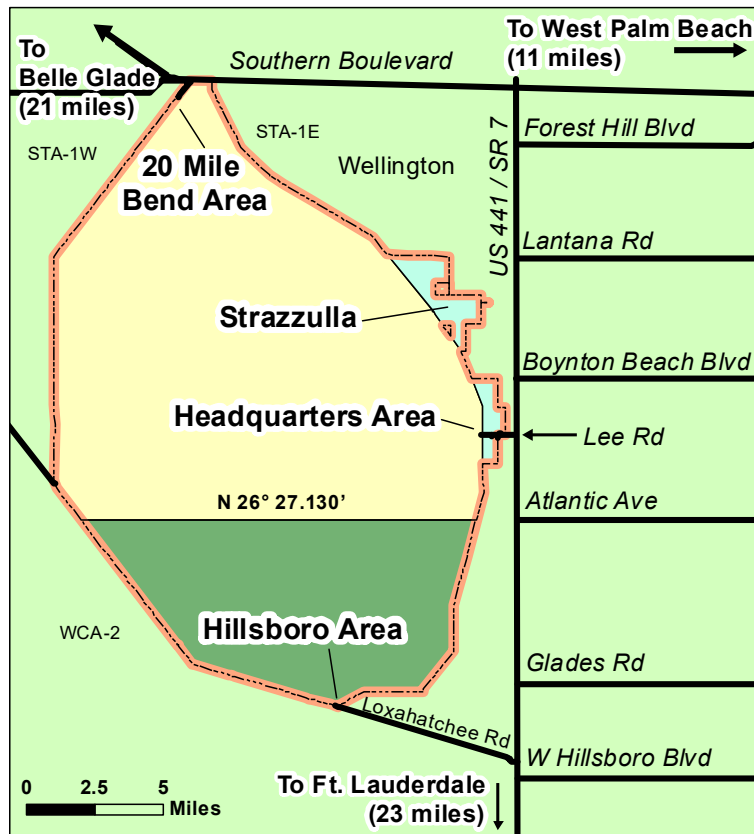
Fishing Tournament

\$150 per tournament

Contact the refuge for further information about fishing tournament permits.

Signs

Please pay attention to refuge signs for your safety and the safety of others and wildlife.



Refuge Boundary	Headquarters
Closed Area	Parking
Open to Motorized and Non-Motorized Watercraft	Boat Ramp
Open to Non-Motorized Watercraft	Fishing Area
No Watercraft	Paddling Area
Paved Roads	Wildlife Viewing
Trails Open to Hiking and Bicycling	Restroom
Trails Open to Hiking, Bicycling, Pet Walking and Equestrian Use	Fee Area
Perimeter Canal	
Canoe Trail	

N