

U.S. Fish & Wildlife Service

# Dale Hollow

*National Fish  
Hatchery*



*The Dale Hollow National Fish Hatchery and Aquarium is one of more than 70 units in the National Fish Hatchery System administered by the U.S. Fish and Wildlife Service. The Service also manages over 500 national wildlife refuges and major fish and wildlife research laboratories across the country. As the Nation's primary steward of fish and wildlife resources, the Service provides leadership in habitat and wetlands protection; fish and wildlife research and technical assistance; and in the conservation and protection of migratory birds, anadromous fishes, certain marine mammals, and threatened and endangered species.*



Dale  
Hollow  
National  
Fish  
Hatchery

**Welcome and Enjoy Your Visit!**

During your visit, please feel free to ask any questions you may have concerning the hatchery.

**What We Do**

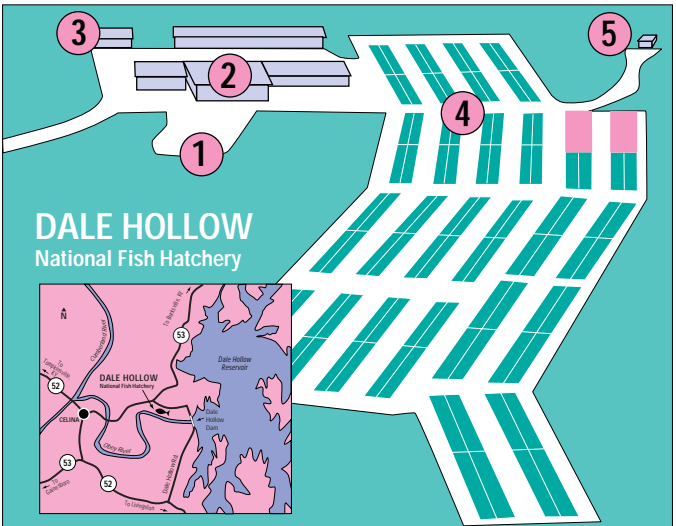
Operated by the U.S. Fish and Wildlife Service, Department of the Interior, this National Fish Hatchery

is one of many serving a vital role in the management of our country's fishery resources.

Construction of a dam, regardless of its type, alters the entire environment

within the river. The first and most obvious change takes place when the reservoir fills, but many changes may also take place below the dam. Some of them might be subtle, and others, like those in the Dale Hollow tailwaters, might be quite drastic. Dale Hollow Dam produces a large, deep reservoir in which the water stratifies into temperature layers during the summer.

photo: USFWS



The water released into the Obey River comes from a deep, cool layer. It caused a loss of the original warm-water fish habitat and replaced it with the present cold tailwater.

The Dale Hollow Hatchery was established in 1965 to produce rainbow, brown and lake trout for restocking the cold tailwaters below Dale

Hollow and other dams. Reservoirs which will support trout are also stocked. In cooperation with the State game and fish agencies, we distribute about 300,000 pounds of trout each year to suitable waters in Tennessee and contiguous states.

The hatchery's water supply comes from Dale Hollow Reservoir at a depth of more than 75 feet below the water surface. The temperature at this depth is cold the year round, ranging between 40° and 60°F. After the water is aerated to add oxygen, it flows through the hatchery at rates up to 12,000 gallons per minute.



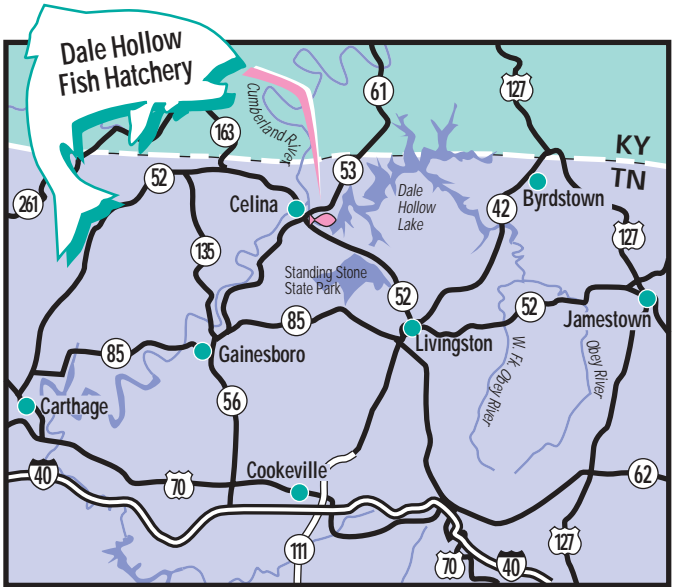
photo: USFWS



photo: USFWS



photo: USFWS



1. Visitor Parking
2. Visitor Center, Aquarium, Office, Incubator Area

The visitor center and aquarium are located in the same area. The visitor center includes visual aides of the hatchery operations and handicap accessible restrooms. The aquarium consists of five tanks which hold fish which were native to the Obey River before the Dale Hollow Dam was constructed.



photo: USFWS



Spawning operations are not conducted at this hatchery. Fertilized eggs are received from other federal hatcheries via overnight shipping in special egg-shipping cartons and are placed into incubator trays. As they hatch they are placed into tanks to grow. The trout swim up from the bottom of the tanks and are fed commercial feeds which include minerals and nutrients. When the trout reach approximately 2-3 inches they are transferred to the outside raceways.

### **3. Paint Storage, Garage, Maintenance Buildings**

Paint and other chemicals are stored in the paint storage building. The mechanical and maintenance aspects of the hatchery are conducted in the maintenance and garage areas. For safety precautions these buildings are not open to the public.







#### 4. Raceway Area

Fish are kept here for approximately 18 months where they are regularly cared for and fed until they reach the 9 inch stocking size. As they grow, transferring them is a regular occurrence. When they reach 9 inches, trout are weighed and harvested from the raceways and distributed by truck to the various waters in Tennessee, Georgia, Alabama, and other hatcheries.



Dale Hollow National Fish Hatchery stocks approximately 1.5 million rainbow, brown, and lake trout annually.

### 5. Aerator Building

This building accomplishes the task of oxygen-enriching water which is gravity-fed from the low levels of the Dale Hollow Reservoir through underground waterlines. After flowing through the aerator building



photo: USFWS

the water is fed into the raceway system at a rate of 12,000 gallons per minute. The water throughout the hatchery rearing system varies from 40°–60°F throughout the year.

In the interest of safety this building is not open to the public.

Dale Hollow National Fish Hatchery is one of many U.S. hatcheries located in the southeast region. These hatcheries serve a vital role in the management of our fishery resources.

We enjoyed having you visit the hatchery and invite you to return often. Your awareness of our resource and its needs is the basic foundation for support of healthy fish and wildlife populations.



photo: USFWS

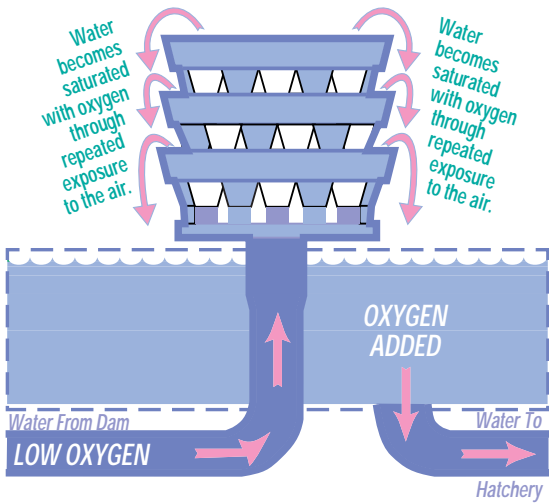


photo: USFWS



# Life-Cycle of Rainbow Trout

## Egg to Fingerling

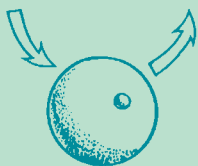
*Undeveloped  
Egg*



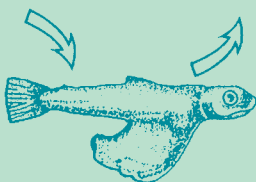
*Hatching  
Fry*



*Fingerling  
Trout*



*Eyed Egg*



*Sac Fry*

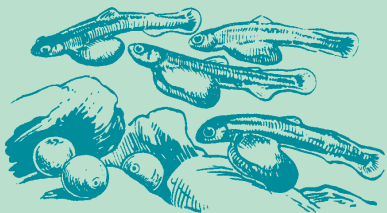
## Natural Life

Trout eggs are deposited in prepared redds, or nests in the gravel of stream beds and hatch in 8 weeks or more. A young fish or fry lives for 3 to 4 weeks on food absorbed from the yolk sac.



About the time the yolk is completely absorbed, the fingerling emerges from the gravel and feeds on microscopic aquatic organisms.

From the many eggs deposited in the gravel, only a very few young fish are produced and survive to adulthood. Most of the eggs and young fish die from natural causes such as floods, silt, drought and predators. Under natural conditions, relatively few trout reach catchable size to be taken by fishermen.



## What Can You Do?

Visitors are welcome to tour the hatchery and aquarium. During your visit, please feel free to ask questions you may have concerning the hatchery.

## Hatchery Hours

7:00 am–3:30 pm central standard time daily.

Restrooms, drinking water, and parking areas are provided for public use.

## Group Tours

Special group tours can be arranged with the Hatchery Manager. You are invited to return often.

## For Additional Information Contact

Hatchery Manager

Dale Hollow National Fish Hatchery

145 Fish Hatchery Road

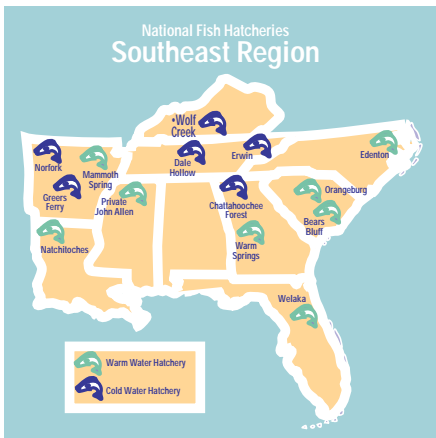
Celina, Tennessee 38551

Telephone: 931/243 2443

## Other Activities

### Camping

Dale Hollow Dam Recreation Park, which is managed by the U.S. Army Corps of Engineers (USACE) adjoins the hatchery grounds and the shores of the Obey River. Also managed by the USACE is Pleasant Grove Park which is located on the shores of Dale Hollow Reservoir.



## Standing Stone State Rustic Park

Located across the Clay and Overton County line, one may enjoy camping, fishing, picnicking areas, hiking and swimming.

Dale Hollow National Fish Hatchery  
145 Fish Hatchery Road  
Celina, Tennessee 38551-6268  
931/243 2443  
<http://www.fws.gov/dalehollow>

U.S. Fish & Wildlife Service  
1 800/344 WILD

October 2005

