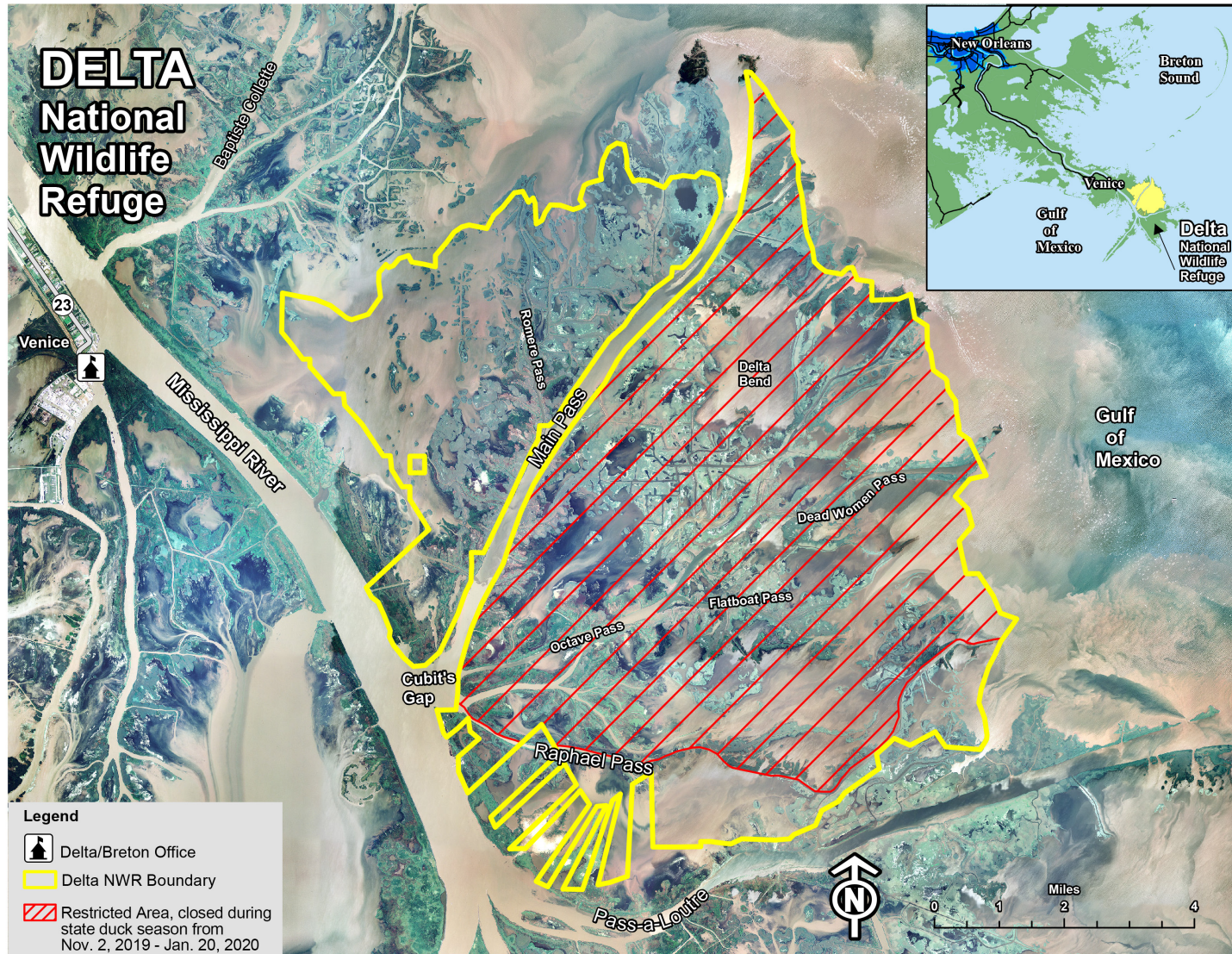
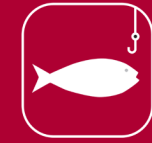


Delta

National Wildlife Refuge General Fishing and Hunting Regulations 2019 - 2020



Southeast Louisiana Refuges
61389 Highway 434
Lacombe, LA 70445
(985)882-2000
www.fws.gov/delta/

U.S. Fish and Wildlife Service
1 800 344 WILD

August 2019



Delta Refuge Hunting Permit

When signed and in your possession, this serves as your permit for all Refuge hunts, and acknowledges your understanding of the regulations contained herein.

Expires August 31, 2020

Signature (permits are not transferable)

Delta National Wildlife Refuge

Delta National Wildlife Refuge, established in 1935, is located in Plaquemines Parish, Louisiana. The 48,800-acre Refuge is composed primarily of emergent marsh. This area combines the warmth of the Gulf of Mexico and the wealth of the Mississippi River. Its lush vegetation is the food source for a multitude of fish, waterfowl and other animals. Delta is the winter home for hundreds of thousands of snow geese, coots and ducks. The primary purpose of the Refuge is to provide wintering habitat and sanctuary for waterfowl and other migratory birds. Public use opportunities include boating, bird watching, fishing, hunting and photography. The Refuge is located six miles southeast of Venice, Louisiana, and can only be accessed by boat. Users are cautioned that travel to the Refuge may be hazardous due to rough water, fog, and swells from large boats.

General Regulations

Hunting, fishing, and public use regulations are designed to provide safe recreational opportunities through wise use of renewable wildlife resources. Hunting and fishing are permitted in accordance with Federal regulations governing public use on National Wildlife Refuges as set forth in Title 50, Code of Federal Regulations. Hunting and fishing will be in accordance with applicable State of Louisiana regulations subject to the following conditions:

All hunters must possess a Refuge permit. This brochure serves as a permit when signed and in your possession. This brochure may also be found at: <http://www.fws.gov/delta/>

Persons possessing, transporting, or carrying firearms on National Wildlife Refuges must comply with all provisions of state and local law. Persons may only use (discharge) firearms in accordance with Refuge regulations (50 CFR 27.42 and specific Refuge regulations in 50 CFR Part 32).

The Refuge is open from one-half hour before legal sunrise to one-half hour after legal sunset, with the exception that hunters may enter the Refuge no earlier than 4 a.m.

Only non-toxic shot is allowed while hunting on the Refuge.

Hunting is only allowed on those portions of the Refuge northwest of Main Pass and south of Raphael Pass.

An adult age 21 or older must supervise youth hunters during all hunts. State regulations define youth hunter age and hunter-educations requirements. One adult may supervise two youths during small game and migratory game bird hunts but must supervise only one youth during big game hunts. Youth(s) must remain within normal voice contact of the adult who is supervising them. Adult guardians are responsible for ensuring that youth hunters do not engage in conduct that would constitute a violation of refuge regulations.

Big Game Hunting

Archery hunting of white-tailed deer and hog on designated areas of the Refuge in accordance with state archery regulations subject to the following conditions:

Archery deer hunting is limited to bucks-only October 1 through 15. Either-sex archery deer hunting is permitted from October 16 through 31 and from the day after the close of the state duck season through the end of the state archery deer season.

Hunters may use only portable deer stands. Hunters may erect deer stands one day before the deer archery season and must remove them from the Refuge within one day after the season closes. Hunters may place only one deer stand on the Refuge. Deer stands must have the owner's name, address and phone number clearly printed on the stand. Hunters must place stands in a non-hunting position when not in use.

Hogs may be taken only with archery equipment during the archery deer season.

Migratory Game Bird Hunting

Hunting of waterfowl (duck, goose, and coot) is permitted in accordance with state and federal regulations subject to the following conditions:

Waterfowl hunting is permitted from one-half hour before legal sunrise until 12 p.m. (noon) on Wednesdays, Thursdays, Saturdays, and Sundays, during the state waterfowl hunting season, including state teal season, youth waterfowl season, and conservation order for light geese.

Only temporary blinds are allowed. Blinds and decoys must be removed from the Refuge by 1 pm.

The use of dogs is permitted to locate, point, and retrieve while hunting migratory game birds.

Upland Game Hunting

Rabbit hunting on designated areas of the Refuge is permitted in accordance with state and federal regulations subject to the following conditions:

Rabbit season opens the day after the state duck season closes and continues through the remainder of state rabbit season.

Hunting is permitted with shotgun only.

Dogs may be used for rabbit hunting.

Hunters are highly encouraged to wear a hunter orange or blaze pink hat or cap while rabbit hunting.

Sport Fishing

Recreational fishing and crabbing are permitted in designated areas (see map), in accordance with state regulations subject to the following conditions:

Recreational fishing and crabbing are permitted from one-half hour before legal sunrise until one-half hour after legal sunset. However, during state waterfowl season, all public entry is prohibited between Main Pass and Raphael Pass and recreational fishing and crabbing are only permitted from 12 pm (noon) until one-half hour after legal sunset on lands northwest of Main Pass and south of Raphael Pass and closed during state duck season from November 2, 2019 - January 20, 2020.

The following activities are prohibited on the Refuge:

- Feeding wildlife
- Air-thrust boats, aircraft, mud boats, air-cooled propulsion engines, and drones
- Any person or group to act as a hunting or fishing guide, outfitter, or in any other capacity that any other individual(s) pays or promises to pay directly or indirectly for services rendered to any other person or persons hunting or fishing on the Refuge, regardless of whether such payment is for guiding, outfitting, lodging, or club membership
- Discharge of firearms within 250 yards of buildings or worksites, such as oil or gas production facilities
- Possession of buckshot, lead shot, slugs, rifles, or rifle ammunition while hunting
- Dogs and driving of deer during archery hunts
- Possession or distribution of bait or hunting with the aid of bait, including any grain, salt, minerals, other feed, or any non-naturally occurring attractant
- Use or possession of alcohol while hunting
- Trail cameras
- Deer decoys
- Open fires
- Cutting, removing, or damaging trees and other plant matter
- Target shooting
- Camping
- Any type of material used as flagging or trail markers, except reflective tacks
- All commercial fin fishing and shell fishing
- Trotlines, limblines, slat traps, jug lines, nets, or alligator lines