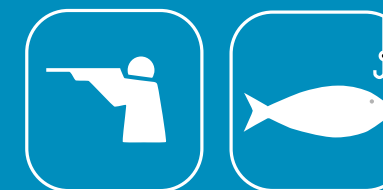


Grand Cote National Wildlife Refuge

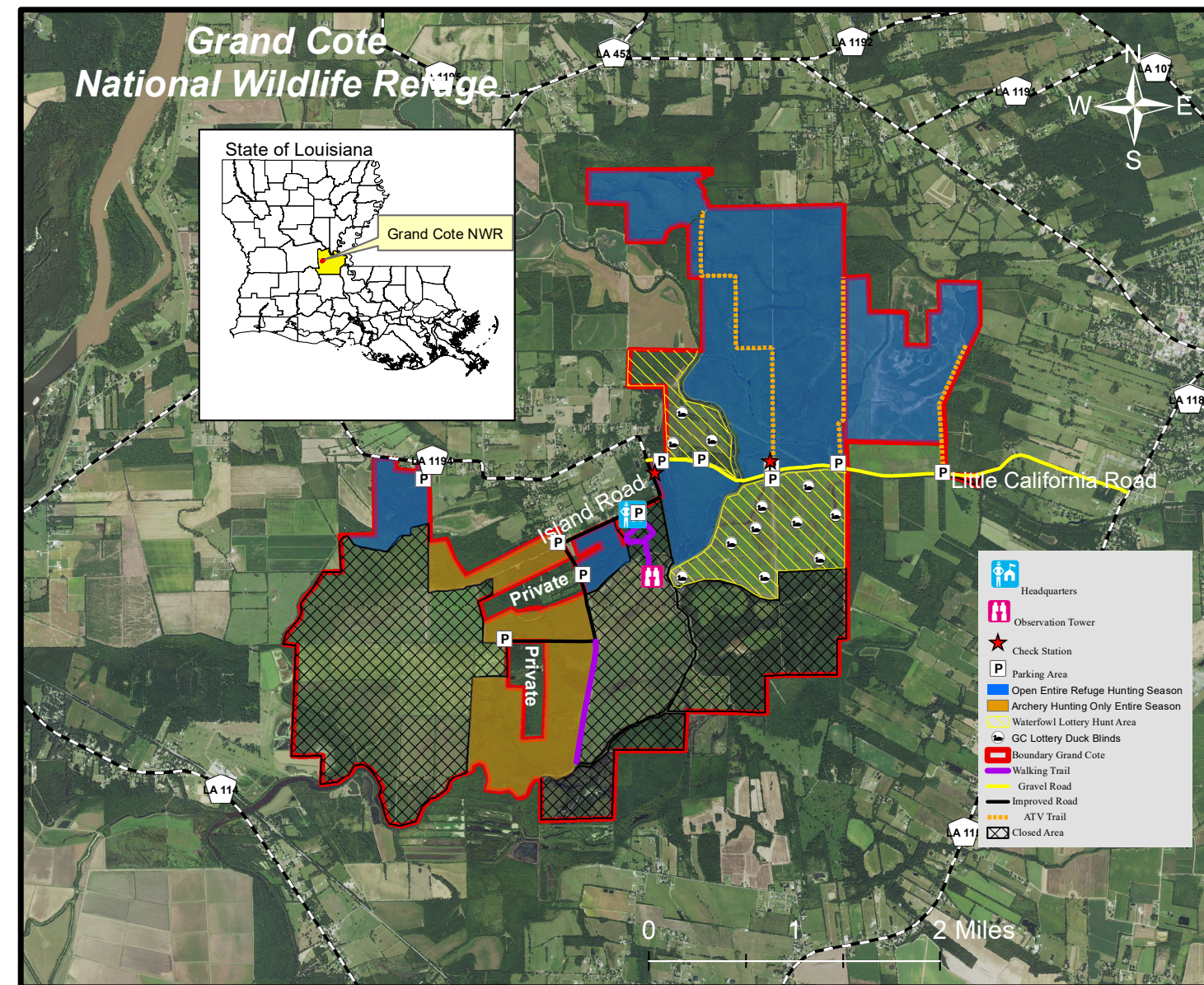
Refuge Hunting, Fishing and Public Use Regulations 2019-2020



Grand Cote National Wildlife Refuge
401 Island Road
Marksville, LA 71351
318/253 4238
<http://www.fws.gov/grandcote>

U.S. Fish & Wildlife Service
1 800/344 WILD

June 2019



Signs and Boundaries

Signs are useful tools in regulating the use of a public area. The wording of the sign applies to the area behind the sign. Please respect the following signs:



This sign delineates the refuge boundary. Always know the regulations before entering.



This area is closed to all public entry.



All hunting and possession of any weapon is prohibited beyond this sign.



No vehicles are allowed on these trails.

Anglers may harvest any fish species on the refuge that is permitted by state regulations. State fish size and bag limits apply.

Use of gear or equipment other than hook and line to catch fish or bait fish is prohibited.

Possession of cleaned or processed fish on the refuge is prohibited.

Creel limits, boating safety, and license requirements are in accordance with state regulations unless otherwise specified in this brochure.

Youth Fishing Rodeo

The annual Youth Fishing Rodeo for youths ages 4-12 is held at the Grand Cote NWR headquarters pond, typically during the month of April. Contact the Refuge office in March to find out the specific event date and lottery application requirements.

Caution Hunters, Black Bear Advisory

In a cooperative effort between the U.S. Fish and Wildlife Service, Louisiana Department of Wildlife & Fisheries, Louisiana State University, and the Black Bear Conservation Committee, Louisiana black bear sows and cubs have been released on Lake Ophelia NWR in an attempt to re-establish these threatened bears within their historical range. Grand Cote NWR is not far from Lake Ophelia NWR and bears could be seen on the refuge. Report all bear sightings to the refuge office. Hunters must positively identify their target before pulling the trigger or releasing an arrow! Black bears and feral hogs are sometimes hard to distinguish in heavy cover.

Deer – Archery	State Season	One buck or doe per day, except during the first two weeks of the State Season when it's bucks only.
Rabbit	State Season	Rabbit dogs allowed after close of the Statewide modern firearms deer season. During the special dog rabbit season, hunters must wear a minimum of an unbroken solid orange hunters cap. Use of dogs to hunt, trail or take deer or hogs is prohibited.
Waterfowl (ducks, geese, and coots)	State Season	Hunting permitted only in locations on map indicated as “open entire season for refuge hunts.” Hunt dates: Wednesdays and Saturdays until noon. Dogs only allowed to retrieve downed game.
Waterfowl (Space Blind Lottery)	Second Split only	Lottery Permit and Application Fee required. Application period: October 1-31. Hunt dates: Wednesdays & Saturdays until noon. Depending on water availability, there will be up to 12, three-man blinds.
Waterfowl - Youth	State Season	All waterfowl hunting regulations apply. Youth hunters weekend ages 8 to 17 only may hunt in the “free roam” hunt area located north of Little California Road (see refuge map).
Woodcock	State Season	Dogs only allowed to locate, point, and retrieve birds.

2019-20 Grand Cote NWR Hunting, Fishing, and Public Use Regulations

Central Louisiana NWR Special Recreational Activity Permits are \$20.00. Our Special Recreational Activity Permit may also be purchased on-line for \$20.00 <https://CentralLA.RecAccess.com>. RecAccess accepts all major credit cards. All hunters are encouraged to purchase permits on-line.

The Refuge

Grand Cote National Wildlife Refuge was established in 1989 to provide habitat for northern pintails and other wintering waterfowl as part of the North American Waterfowl Management Plan. The 6,075 acre refuge is located in the Red River flood plain in east central Louisiana. Public hunting and fishing is permitted on approximately 4,000 acres during specific times of the year. Individuals utilizing the refuge are subject to inspections of permits, licenses, hunting equipment, bag limits, boats, vehicles, and their contents by refuge officers.

To ensure your safety and enjoyment while visiting Grand Cote National Wildlife Refuge, please take the time to become familiar with the following regulations.

General Regulations

Hunting and fishing regulations are designed to protect the sportsman as well as wildlife populations. The regulations below govern hunting and fishing on national wildlife refuges as set forth in Title 50, Code of Federal Regulations. Hunting and fishing will be in accordance with applicable state regulations, except where otherwise stated.

The refuge is open to public access for the purpose of hunting from **4 am to two hours after sunset**. The refuge boundary is marked with signs and yellow paint. The boundary of no hunting zone is marked with red paint.

Weapons and Ammunition

Longbows, compound bows, and crossbows or any bow drawn, held, or released by a mechanical means will be a legal means of take during the deer archery season.

Persons possessing, transporting, or carrying firearms on Refuge must comply with all provisions of state and local laws. Refuge users may only possess approved nontoxic shot while on the Refuge. Possession of shot larger than that legal for waterfowl hunting is prohibited; use or possession of lead shot is prohibited refuge wide. Pistols/handguns are not allowed for big or small hunting. **Note: Possession of buckshot is prohibited.**

Permits

An annual Special Recreational Activity Permit is required for all hunters and fishermen 16-years-old and older, and for all terrain vehicle (ATV) use on the refuge. The Central LA NWR (**\$20.00**) Special Recreational Activity Permit applies to all refuges within the complex (Lake Ophelia, Grand Cote, and Catahoula).

Permits are available at the Refuge headquarters located at Grand Cote National Wildlife Refuge, 401 Island Road, Marksville, LA 71351. Office hours are Monday through Friday 7:30 am to 4 pm, **except on federal holidays when the office is closed**. Permits may also be purchased at the Catahoula NWR Office, located at 210 Catahoula NWR Road, Jonesville, LA 71343 **on US Highway 84, approximately 12 miles east of Jena, LA, and 1 mile west of the junction of highways US 84 and LA 28**. On weekdays and weekends, permits may be purchased at Kate and Ivy’s Grocery store, located at 5090 Highway 452 Marksville, LA 71351 and at T-Town located at 5925 Highway 84, Jonesville, LA 71343. Refuge permits authorize participation in all refuge hunting and fishing. The permit must be signed and in your possession whenever hunting, fishing, or using an ATV on the refuge, and acknowledges your understanding of refuge regulations. Our Special Recreational Activity Permit may also be purchased on-line at <https://CentralLA.RecAccess.com>. All permits purchased on-line must be printed and in the hunter’s possession.

Commercial Activities

Commercial hunting and fishing activities are prohibited. Specifically, we prohibit any person or group acting as a hunting guide, outfitter, or in any other capacity that any other individual pays or promises to pay directly or indirectly for services rendered to any other person(s) hunting on the refuge, regardless of whether such payment is for guiding, outfitting, lodging or club membership.

Waterfowl Hunting

We allow hunting of waterfowl on Wednesdays and Saturdays until 12 noon in areas designated on the refuge map within this brochure as “open entire season for refuge hunts.” All hunters, except youths 15 years old and younger, must possess an annual Grand Cote Special Recreational Activity Permit, available from the refuge office. Hunters may enter the refuge after 4 am. All non-motorized boats, equipment, and decoys must be brought in daily and removed by 1 pm.

Youth hunters under age 17 must remain within sight and normal voice contact of an adult age 18 or older. Each adult can supervise no more than two youths.

Youths ages 8 to 17 only (with adult supervisors) are eligible to hunt the State Youth Waterfowl Day (Saturday only) in the areas of the refuge indicated “open entire season” (see brochure map). The adult supervisor is not allowed to hunt ducks on this day.

Lottery Waterfowl Space-Blind Hunts

The space-blind waterfowl hunt area includes up to 12, three-man blinds which are available on Wednesdays and Saturdays during the second split of the waterfowl season only.

New!

How to Apply for Waterfowl Lottery Hunts
Hunters may now apply for Waterfowl Lottery Hunts on-line at <https://CentralLA.RecAccess.com>.

During the application process you will be provided with an immediate confirmation number. Please save this number for your records once your application is complete.

Paper applications are no longer accepted by mail or in person at The Central Louisiana Refuge Complex office in, Marksville, LA. **Applications must be completed on-line!**

New!

All Waterfowl Lottery Hunts require an application to be completed and processed online through RecAccess. Waterfowl Hunters may apply from October 1-31, 2019 at <https://CentralLA.RecAccess.com>. You must provide an email address when signing up. Additional instructions can be found on the website. Hunters will be notified of their drawing status on Friday, November 11, 2019 .

If you have any questions about the application process, visit at <https://CentralLA.RecAccess.com> for further instructions.

There is a \$5.00 application fee for each individual applying for a lottery hunt. Application fees must be in the form of a credit card payment for on-line applications. This fee is non-refundable and must be received with your on-line application.

We allow no more than **three** hunters to hunt from a blind at one time during any waterfowl hunt. **Permits that are provided to persons selected for lottery hunts are nontransferable. The person whose name appears on the permit must be present in the blind during the hunt.**

Successful applicants 16 years old and older must purchase a non-refundable annual Special Recreational Permit prior to their hunt date. **The refuge reserves the right to cancel any**

space-blind lottery waterfowl hunt due to lack of water availability, inclement weather, etc.

Access to blinds will require some walking. All other waterfowl hunting regulations apply.

Automobiles

All motorized vehicles are restricted to roads that are delineated on the refuge map. The vehicle speed limit shall not exceed 25 mph, except as otherwise legally posted.

All- Terrain Vehicles (ATVs)

Use of all-terrain vehicles (ATVs) is restricted to designated ATV trails. ATVs are allowed only for hunting, fishing, and other wildlife related activities. ATVs will not exceed 25 mph when driven on the Refuge.

ATVs used on Refuges will not exceed the following: weight – 750 lbs., length – 85”, and width – 48”. ATV tires are restricted to those no larger than 25 x 12 with a maximum lug height of 1” and a maximum allowable tire pressure of 7 p.s.i. as indicated on the tire by the manufacturer. ATV trails are open from September 1 through the last day of state rabbit season.

Boats

Only non-motorized or electric powered boats are permitted on the refuge. Boats may not be left on the refuge overnight. **No boats allowed in the Coulee Des Grues along Little California Road.**

Prohibited Activities

The following activities are prohibited on Grand Cote National Wildlife Refuge:

- Possession or distribution of bait while in the field and hunting with the aid of bait, including any grain, salt, minerals, or any non-naturally occurring food attractant.
- Hunting or the discharge of firearms within 150 feet from the centerline of roads, maintained trails, and utility right-of-ways is prohibited.
- Use or possession of any type of material used as flagging or trail markers, except bright eyes or reflective tape.
- Use of pistols or handguns for hunting.
- Use or possession of alcoholic beverages while hunting.
- Littering or leaving personal items, other than what is identified in this brochure.
- Camping / overnight parking.

■ Collection and removal of deer antlers.

■ Taking of wildlife, or parts of, or plants (including cutting trees or brush) other than specified in this brochure.

■ Target practice.

■ Trapping.

■ Use of horses or mules.

■ Possession of saws, saw blades, and/or machetes.

■ Fires.

■ Spot-lighting – including the use of automobile/ATV artificial light may not be used to locate wildlife.

■ Man-drives for deer or feral hogs.

■ Harvest of frogs, turtles, snakes, shells, or mollusks.

■ Crawfishing.

■ Searching for or removing any object of antiquity including arrowheads, pottery or other artifacts.

■ Blocking gates or roadways with vehicles or ATVs.

■ Drive or screw a nail, spike or other metal objects into a tree or to hunt from any tree in which such an object has been driven; or using climbing spikes.

■ Use of remote cameras.

■ Use of deer decoys.

■ Geocaching.

Specific Hunting Regulations

All hunters must check-in and check-out after each hunt using a self-clearing permit available from a check station. Reporting your hunting activity and any wildlife harvest after each hunt will help us better manage the Refuge. Hunter participation and wildlife harvest data are vital to the management of Refuge. **Do not to fill out a self-clearing permit for scouting!**

Hunters may enter the Refuge no earlier than 4 am and must exit no later than two hours after legal sunset for that day. Waterfowl hunting must cease by 12 noon and all decoys/blinds removed from the hunting area by 1 pm.

Only portable and ground deer stands may be used. **Deer stands may be placed on the refuge in a non-hunting position one day prior to the archery season and must be**

removed from the Refuge within one day after the archery season closes — no exceptions! Hunters may place only one deer stand on the Refuge. Deer stands must have the owners name, address and phone number clearly printed on the stand. Portable and ground stands must be placed in a non-hunting position, at or near the base of the tree, when not in use.

State bag limits apply unless otherwise specified. The only seasons open are those listed in this brochure.

Hunting is permitted only in designated areas during dates shown on map.

Deer hunters hunting from concealed ground blinds must display a minimum of 400 square inches of “hunters orange” above or around their blinds which is visible from 360 degrees.

All refuge users must enter and exit the refuge only at designated parking lots. Accessing adjacent lands from any part of the refuge or from refuge parking areas is prohibited.

Beaver, feral hogs, raccoon, nutria, and coyote may be taken **incidental to refuge hunts** with weapons legal for that hunt until the daily bag limit of game is taken. Use of dogs to hunt, trail or take deer or hogs is prohibited.

Hunting with pointer/retriever dogs during migratory bird seasons and hunting with rabbit dogs during the rabbit season is permitted. However, rabbit dogs are allowed **only** after the Louisiana modern firearms deer season has closed until the close of the state rabbit season. Use of dogs to hunt, trail or take deer or hogs is prohibited.

Only beagles that do not exceed 15 inches at front shoulders may be used for rabbit hunting. All dogs must be collared with owner’s name and phone number. Rabbit hunters must wear a minimum of a solid orange cap during special dog season.

Sport Fishing Regulations

Sport fishing is permitted year-round in Coulee Des Grues along Little California Road. Refuge anglers must obtain and possess a Refuge Special Recreational Activity Permit, available for purchase at the Refuge office or Kate and Ivy’s Grocery Store on Highway 452 north of Marksville.

Fishing only allowed in portion of Coulee des Grues Bayou located adjacent to Little California Road. No boats allowed in the Coulee Des Grues along Little California Road.