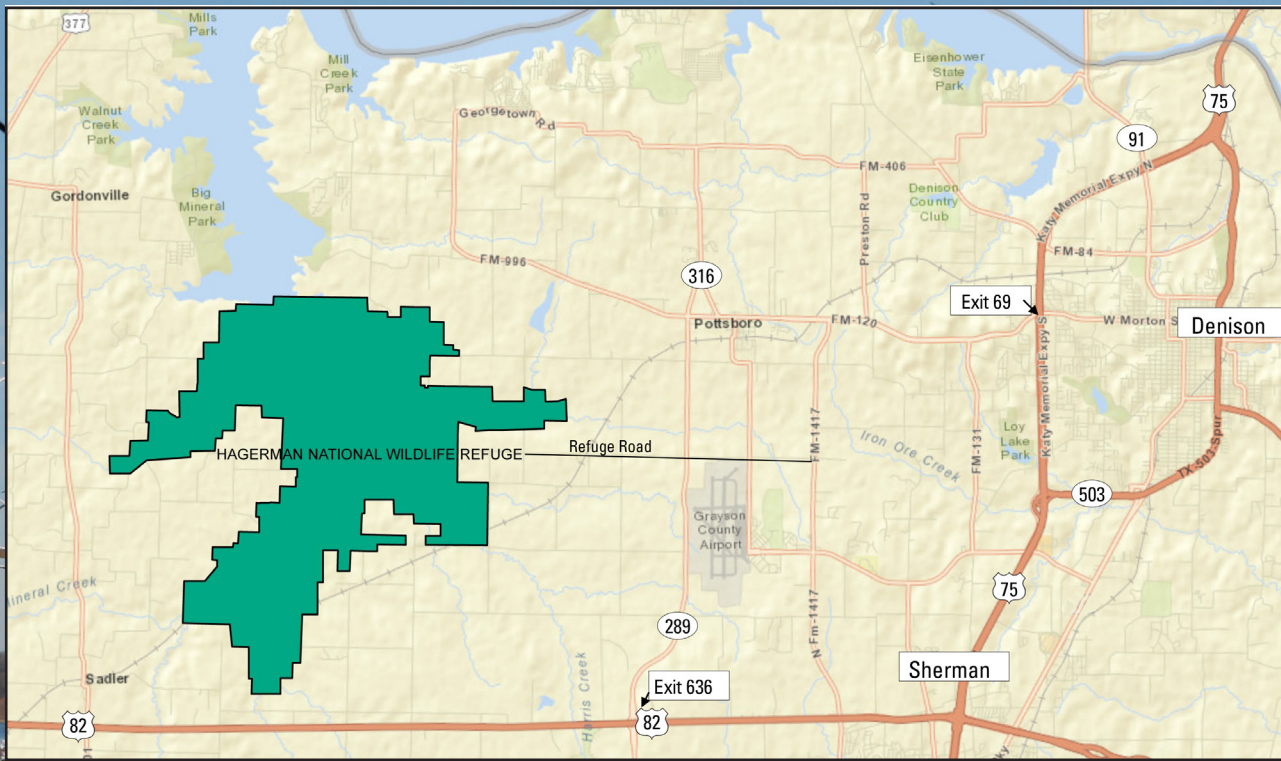


Hagerman

National Wildlife Refuge



Hagerman NWR Hiking Trails

Crow Hill Trail

3/4 mile round-trip hike

From the Wildlife Drive, take Silliman Road. Note, road curves right at a gate. Parking and trailhead ahead near split rail fence.

Haller's Haven Trail

2.7 mile round trip hike

Located in the north end of the Refuge in the Goode Day Use Area. Trailhead is in NE corner.

Harris Creek Trail

1 and 2 mile round-trip trails

The parking area is directly across from the Visitor Center drive-way. Trail partially accessible.

Meadow Pond Trail

5.7 mile round trip hike

Look for the trailhead sign located at the south end of Wildlife Drive. Please park to the right of the gate.

Raasch Trail

3 mile round trip hike

Located just north of the Visitor Center at the east end of Wildlife Drive.

Hagerman National Wildlife Refuge

6465 Refuge Road

Sherman, Texas 75092-5817

903/786-2826

903/786-3327 Fax

www.fws.gov/refuge/hagerman

Texas State Relay Service

1 800/735-2989

U.S. Fish and Wildlife Service

www.fws.gov

For information on the
National Wildlife Refuge System

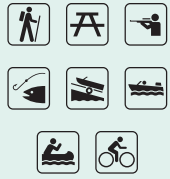
1 800/344-WILD

All images USFWS unless noted.

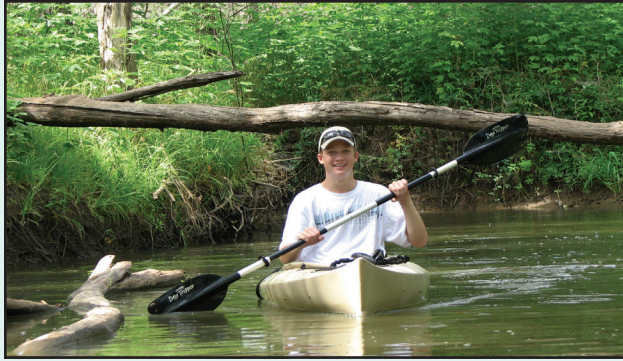
April 2013



Welcome to Hagerman NWR



Established in 1946 as a 11,320-acre overlay of Lake Texoma, the primary Refuge goal is to provide habitat for all types of migratory birds—waterfowl, shorebirds, wading birds, songbirds and raptors. Uplands and wetlands are also managed for resident native wildlife including white-tailed deer, bobcat, river otter, and gray fox. More than 400 species of fish, wildlife, and birds can be found on the Refuge.



Visitor Center Hours

(Central Standard Time)

7:30 am–4:00 pm
Monday through Friday

9:00 am–4:00 pm
Saturday

1:00 pm–5:00 pm
Sunday

Opportunities for wildlife-oriented recreation include wildlife observation and photography, fishing, and hunting. A three-mile Wildlife Drive takes you through good wildlife viewing areas and provides interpretive panels on a variety of topics. Five hiking trails offer an opportunity to explore the great outdoors. Seasonal boating is allowed and three Day Use Areas offer picnic tables and restroom facilities. On the second Saturday of each month, *Friends of Hagerman* host free nature programs open to everyone.



The Refuge is open from sunrise to sunset year-round. No fee required to visit! Pets are welcome and must remain on a leash. For more information please call the Refuge at 903/786-2826 or visit our website at www.fws.gov/refuge/hagerman.

Wildlife Drive and Hiking Trails

Hagerman Wildlife Drive and five hiking trails provide opportunities to view and photograph a variety of birds and wildlife. Farm fields, wetlands, prairie, and forested areas each create different types of habitat for wildlife.

