

Species	Refuge Season
Goose.....	No hunting during the State spring goose hunt
American crow.....	State fall crow season only
Coyote.....	September 1—February 28
Fox (red and gray).....	September 1—February 28
Raccoon.....	Beginning of State season—February 28
Opossum.....	Beginning of State season—February 28
Striped skunk.....	September 1—February 28

The following refuge hunting seasons differ from State seasons.

- Each unit offers specific hunting opportunities during Minnesota state seasons. We prohibit the use of motorized (gas or electric) boats. We allow non-motorized boats in areas open to waterfowl hunting during the waterfowl hunting seasons.
- Hunters may use bicycles and game carts on designated trails and service roads during the hunting seasons.
- We prohibit hunting on, from, across, or within 100 feet (30 m) of any road, parking area, or designated trail.
- All property brought onto the refuge must be removed after each day. This includes all vehicles, boats, decoys, blinds, stands, trail cameras and trash.
- Entry into the refuge earlier than 2 hours before legal shooting time is prohibited. Hunters must leave the refuge no later than 1 hour after legal shooting time. You may only hunt coyotes, skunks, fox, opossum and raccoon from 1/2 hour before legal sunrise until legal sunset.
- Camping, campfires and overnight parking are prohibited.
- The use of hunting dogs is allowed during the State-approved hunting season and for non-firearmers only, provided the dog is under the immediate control of the hunter at all times. Training and allowing pets off leash are prohibited.

- Hunters may use or possess only approved non-toxic shot shells while in the field, including shot shells used for hunting wild turkey.
- Single projectile ammunition is prohibited on all refuge units except: 1) for upland game and firearmers, .22 caliber and smaller rim-fire rifles and handguns are allowed on Jessenland and Blakeley units and 2) where firearmers deer hunting is allowed, shotgun and muzzle-loading rifles are permitted.
- The use of air guns is prohibited. Target shooting of any kind is prohibited.
- Small game hunters must wear an article of blaze orange consistent with state regulations.
- Some areas are posted as No Hunting Zones to protect buildings, private property, or critical habitat areas.
- Firearms and weapons must be cased and unloaded while accessing hunting areas through No Hunting Zones.
- Motorized vehicles are prohibited except on designated parking areas, access roads and public roads.
- No permanent stands are permitted. Hunting from a tree into which a metal object has been driven is prohibited. Do not use nails, wire, screws or bolts to attach a stand or steps to a tree.
- Distribution of feed or bait, or hunting over bait is prohibited. This includes salts and minerals.
- The possession of alcohol while hunting is prohibited.
- Trapping is prohibited on the refuge, except by permit issued by the refuge manager.

Consider switching to lead free ammunition. Bald eagles live on Minnesota Valley National Wildlife Refuge during the fall and winter.

Eagles are scavengers. They eat deer carcasses and gut piles. When those remains contain lead bullet fragments, eagles may eat lead and can die.

Hunters have been on the forefront of conservation for more than a century. Continue that tradition by changing to lead free ammunition!

www.fws.gov/midwest/refuges/leadfree.html

P 16899 Jonathan Carver Parkway, Carver, MN 55315
Lot is on east side of road, north of the Minnesota River Bridge.

P 15847 Rapids Lake Road, Carver, MN 55315
Lot is on north side of road 1 mile east of Co. Rd. 11.

P 14901 Jonathan Carver Parkway, Carver, MN 55315
Lot is on east side of road approximately 3 miles south of Hwy 212.

P 102 Carver Bluffs Parkway, Carver, MN 55315
Lot is located in Carver Bluffs Park

Please Note:
There are several **No Hunting Zones** in the Rapids Lake Unit near housing developments, trails, and buildings.

- Big Game: archery & firearms
- White-tailed deer
- Migratory Birds
- Closed to spring goose hunting. Goose, duck, merganser, moorhen, coot, rails, mourning dove, snipe, and woodcock.
- Upland Game: Archery & Firearms
- Ruffed grouse, gray partridge, ring-necked pheasant, squirrel, snowshoe hare, cottontail rabbit, jackrabbit, and wild turkey (spring and fall turkey seasons).
- Upland Game: Archery only
- White-tailed deer
- Migratory Birds
- Closed to hunting crow, coyote, red fox, raccoon, skunk, rabbit, jackrabbit and wild turkey (spring and fall turkey seasons).
- Closed to crow hunting.

Rapids Lake Hunting Activities & Regulations

St. Lawrence Hunting Activities & Regulations

- Big Game: Archery Only
- White-tailed deer
- Waterfowl Only. Closed to spring goose hunting)
- Goose, duck, merganser, moorhen, coot, rails
- Closed to hunting mourning dove, snipe and woodcock.
- Upland Game
- Ruffed grouse, gray partridge, ring-necked pheasant, squirrel, snowshoe hare, cottontail rabbit, jackrabbit and wild turkey (spring and fall turkey seasons).
- Archery only hunting for coyote, fox, raccoon and skunk.
- Closed to crow hunting.

P 20801 Johnson Memorial Drive (US-169), Jordan, MN 55352
Lot is on north side of highway.

Jessenland and Blakeley Activities & Regulations

- Big Game: Archery & Firearms
- White-tailed deer
- Migratory Birds
- (Closed to spring goose hunting)
- Goose, duck, merganser, moorhen, coot, rails, mourning dove, snipe, and woodcock.
- Upland Game: Archery & Firearms
- Ruffed grouse, gray partridge, ring-necked pheasant, squirrel, snowshoe hare, cottontail rabbit, jackrabbit coyote, fox, raccoon, skunk and wild turkey (spring and fall turkey seasons).
- Open to crow hunting according to refuge-specific regulations.

P 30951 Scenic Byway Rd, Henderson, MN 56044
Lot is on south side of road, 1 mile SW of Co. Rd. 5.

P 31147 Scenic Byway Rd, Henderson, MN 56044
Lot is on south side of road, 2 miles SW of Co. Rd. 5.

P Approximately one mile east of Henderson on Hwy 19. Lot is on north side of road.

For Hunting Regulations on the DNR Carver Rapids Unit please call 651/259-5774.

recommended until freeze-up.

P 17401 Duck Lane, Jordan, MN 55352
Parking is located at gate 1 mile north of Mendota Avenue. 4-wheel drive is

P 17000 Valley View Drive, Jordan, MN 5535
Lot is located near 173rd Street & Hwy 169.

P 16210 Jordan Ave., Jordan, MN 55352
Near Bluff Drive & Hwy 169. Please respect private property stay and on road to refuge entrance.

P 3898 145th St. W., Shakopee, MN 55379
Lot is .5 miles west of Hwy 169.

Closed to crow hunting.

- Big Game: Archery and Firearms
- White-tailed deer
- Migratory Birds
- (Closed to spring goose hunting) Goose, duck, merganser, moorhen, coot, rails, mourning dove, snipe, and woodcock.
- Upland Game: Archery and Firearms
- Ruffed grouse, gray partridge, ring-necked pheasant, gray and fox squirrel, snowshoe hare, cottontail rabbit, jack rabbit, coyote, fox, raccoon, skunk, and wild turkey (spring and fall turkey seasons).
- Closed to hunting crow, coyote, red fox, raccoon, skunk, rabbit, jackrabbit and wild turkey (spring and fall turkey seasons).

South of Middle Road North of Middle Road (Includes Carver Rapids DNR)

Louisville Swamp Hunting Activities & Regulations

Wilkie Hunting Activities & Regulations

- Rice Lake Area (from Eagle Creek west to the Highway 169 bridge)
- Big Game: Archery Only
- White-tailed deer
- Waterfowl Only: Closed to spring goose hunting
- Goose, duck, merganser, moorhen, coot, rails.
- Closed to hunting mourning dove, snipe and woodcock.
- Upland Game: Archery Only
- Ruffed grouse, gray partridge, ring-necked pheasant, squirrel, snowshoe hare, cottontail rabbit, jackrabbit, coyote, fox, raccoon, skunk, and and wild turkey (spring and fall turkey seasons).

West of Highway 169 bridge (including Fisher and Blue Lakes)

- Big Game: Archery Only
- White-tailed deer
- Migratory Birds: Closed
- Upland Game: Archery Only
- Ruffed grouse, gray partridge, ring-necked pheasant, squirrel, snowshoe hare, cottontail rabbit, jackrabbit, coyote, fox, raccoon, skunk, and wild turkey (spring and fall turkey seasons).
- Closed to crow hunting.

East of Eagle Creek

- Closed to all hunting.

P 7701 County Road 101 East, Shakopee, MN 55379
Lot is west of the Hwy 169/101 interchange on north side of the road.

P 7701 County Road 101 East, Shakopee, MN 55379
Waterfowl hunter access. Drive .8 miles past the first gate to the second gate. Boat launch to Rice Lake is 50 yards east of the road. Vehicle and trailer parking is under the Hwy 169 bridge to the west.

P 11255 Bloomington Ferry Road, Bloomington, MN 55348
Park in lot and walk across the pedestrian bridge to access the Wilkie Unit.

Minnesota Valley National Wildlife Refuge
Bloomington Education and Visitor Center
3815 American Boulevard E.
Bloomington, MN 55425-1600
952/854-5900

People with hearing impairments may reach Minnesota Valley NWR through the Federal Information Relay System at 1 800/877-8339

Minnesota Valley's website address:
www.fws.gov/refuge/minnesota_valley

U.S. Fish & Wildlife Service
1 800/344-WILD
www.fws.gov

Contacts:
Emergencies.....911



To report violations:

Refuge Law Enforcement Officer..952/858-0711
TIP Line..... 1-800/652-9093

Carver Rapids Unit - DNR.....651/259-5774

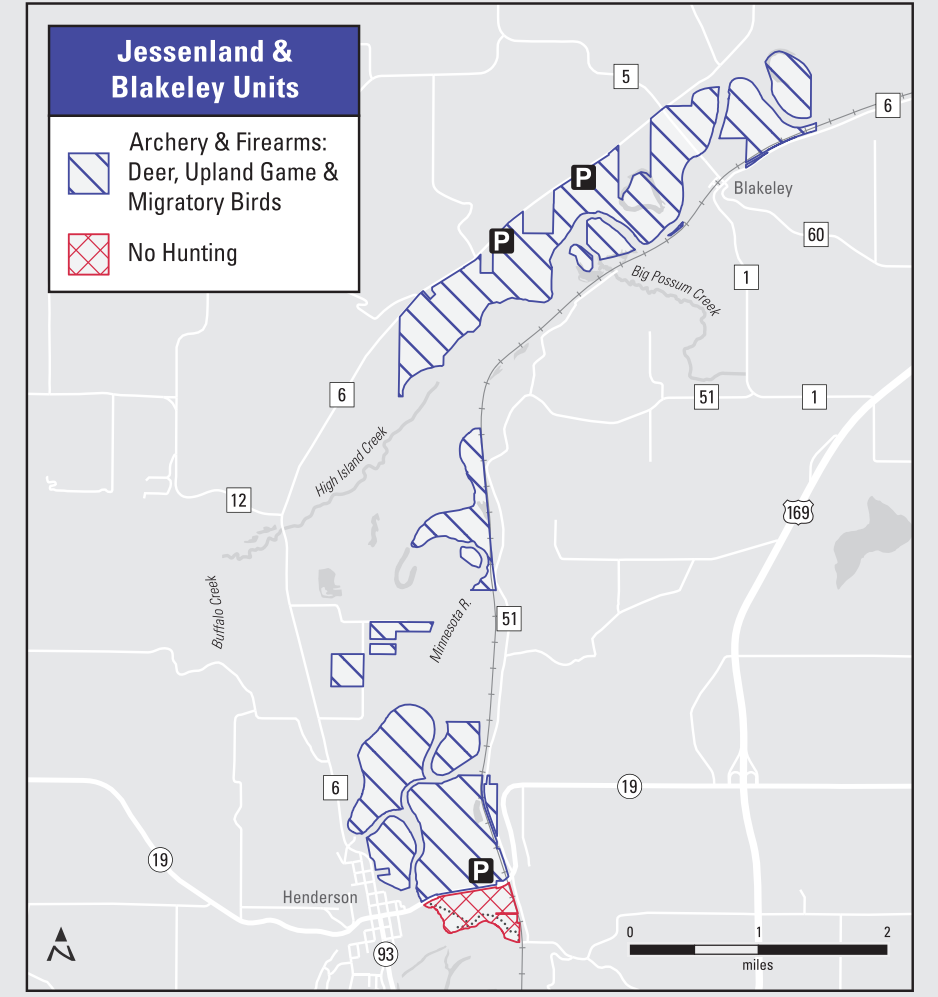
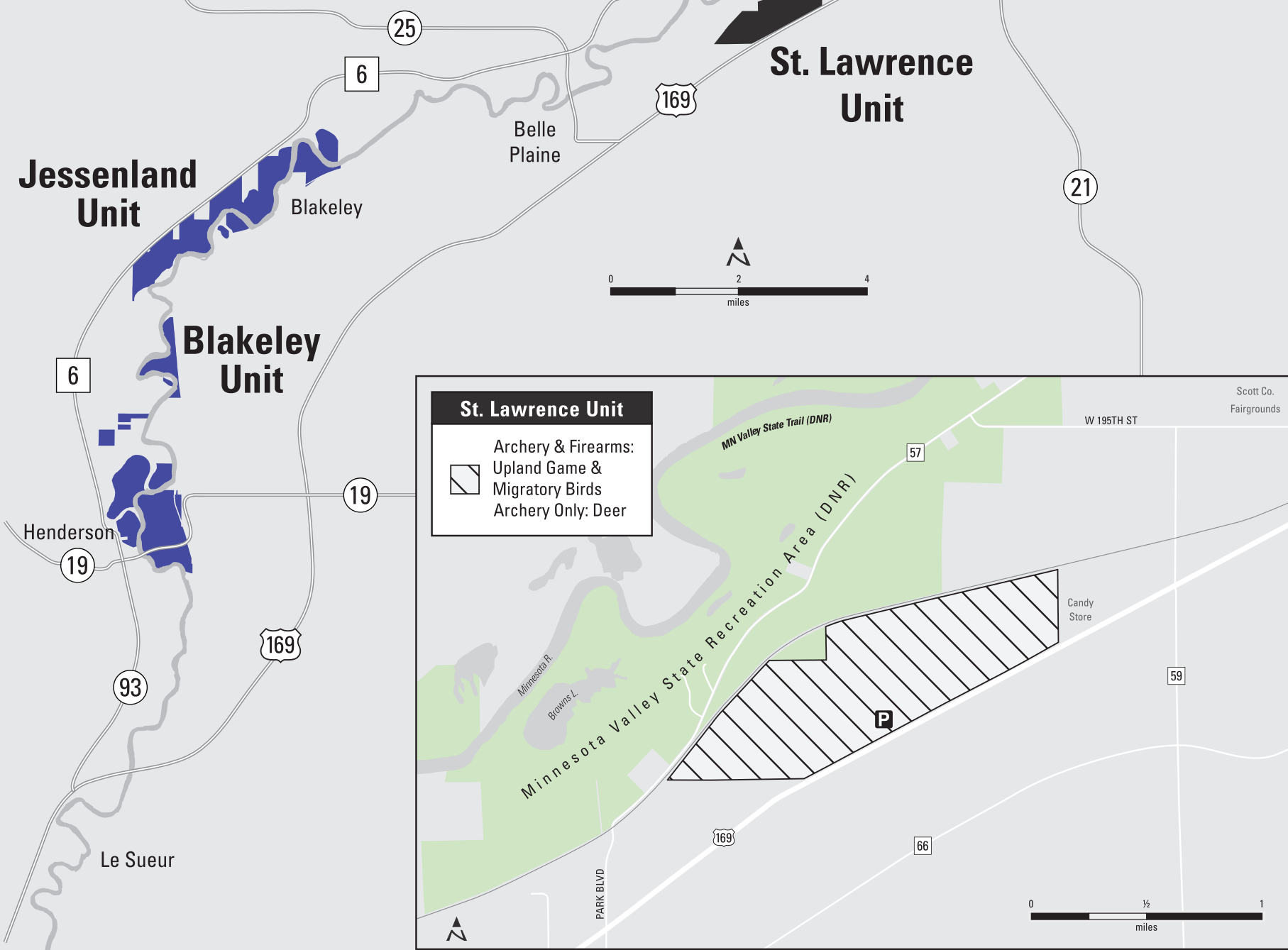
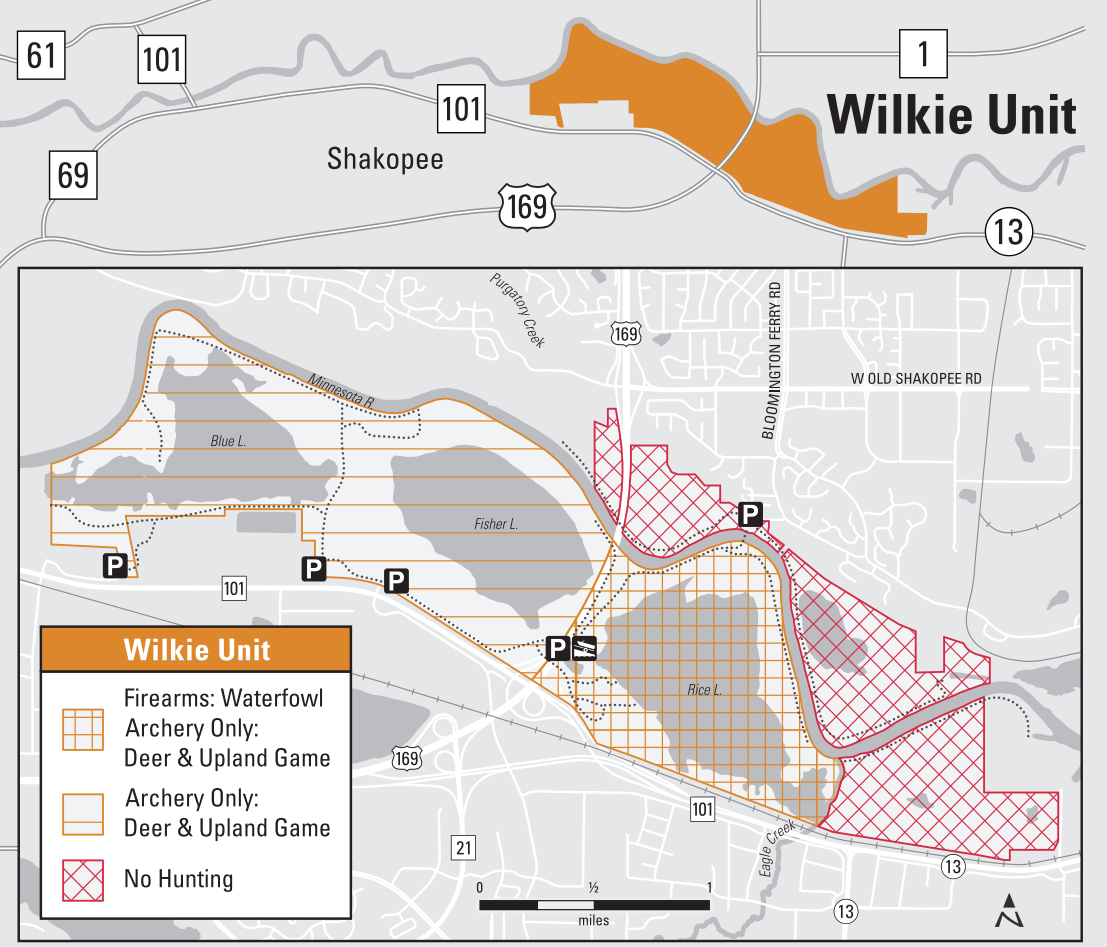
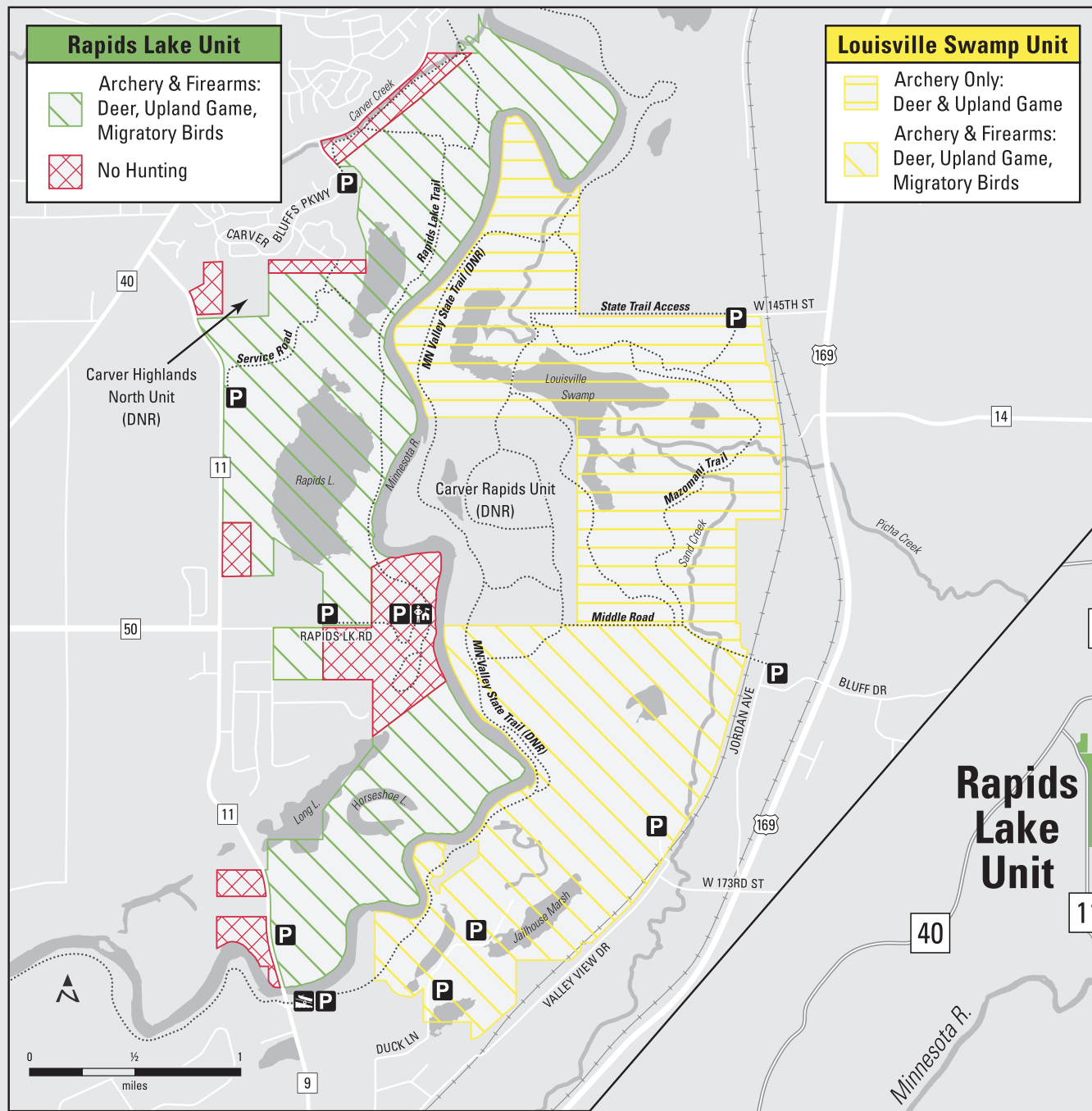
West Metro State Conservation
Office Dispatch.....651/582-1511

Contact the refuge at 952/854-5900 for more information.

For other hunting opportunities on Waterfowl Production Areas visit our website at:
www.fws.gov/refuge/Minnesota_Valley_WMD/visitor_activities.html

Minnesota Valley National Wildlife Refuge

Hunting Regulations



HUNTERS:

- P** Hunters' parking areas
- Visitor Center** icon
- Boat launch** icon
- Walking trails** icon

Street addresses to parking areas are approximate.