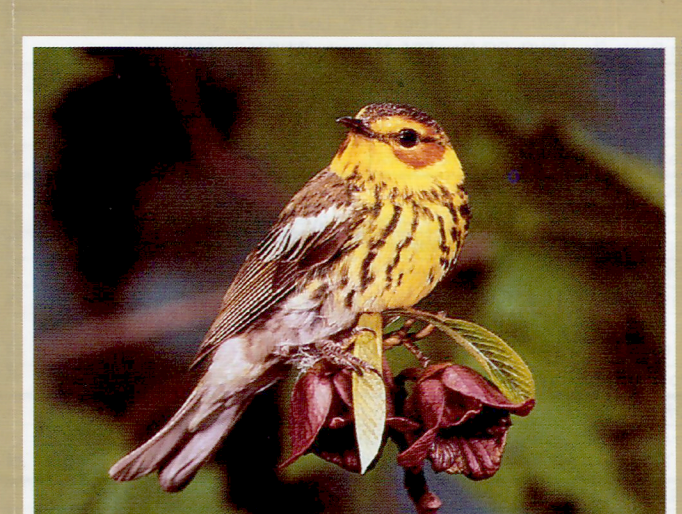
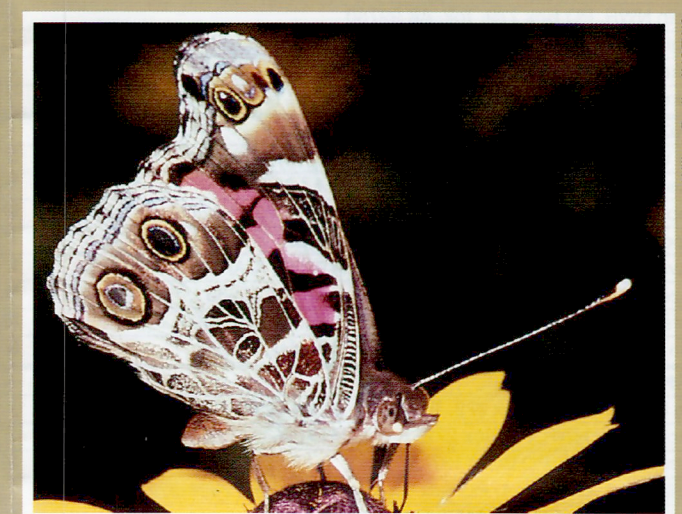


America's national wildlife refuges... where wildlife comes naturally!



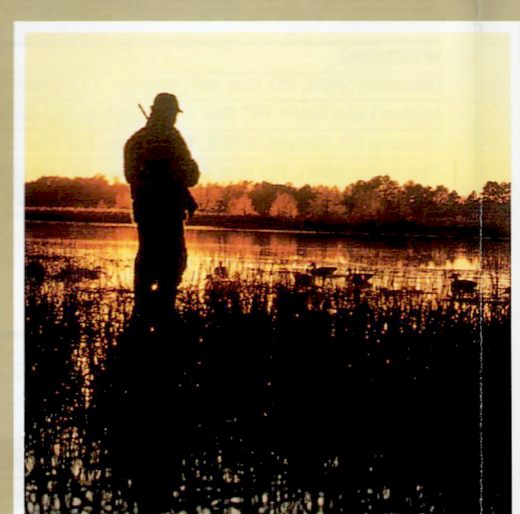
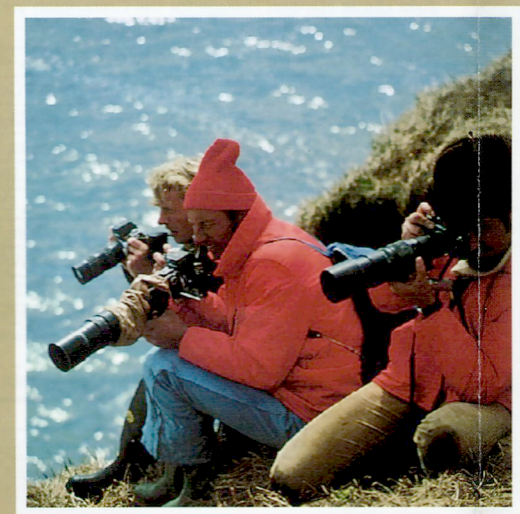
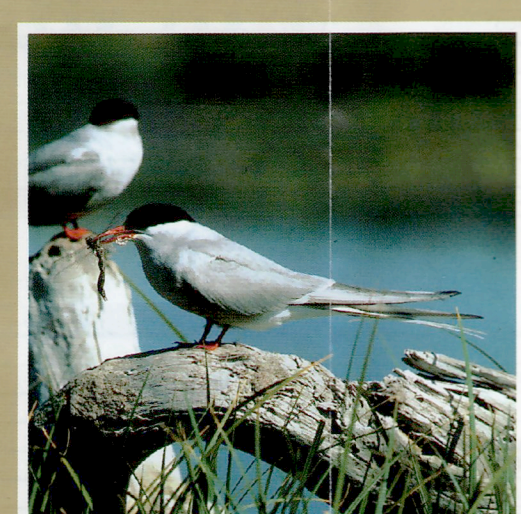
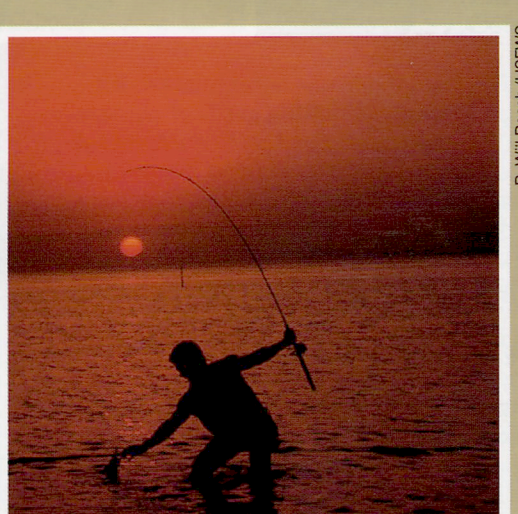
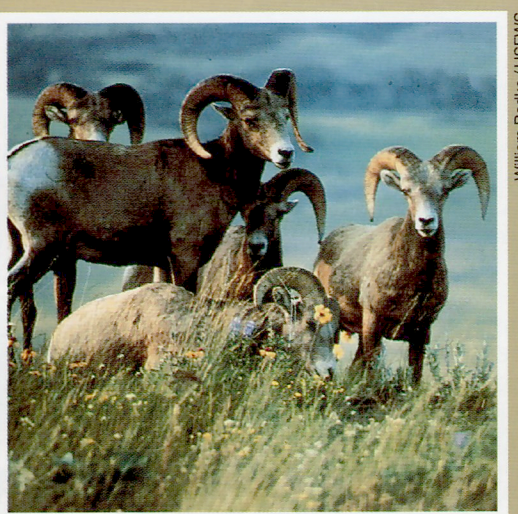
National Wildlife Refuges

Note: This is not a map of all refuges in the Refuge System. Only those refuges that provide recreational and educational opportunities are shown.



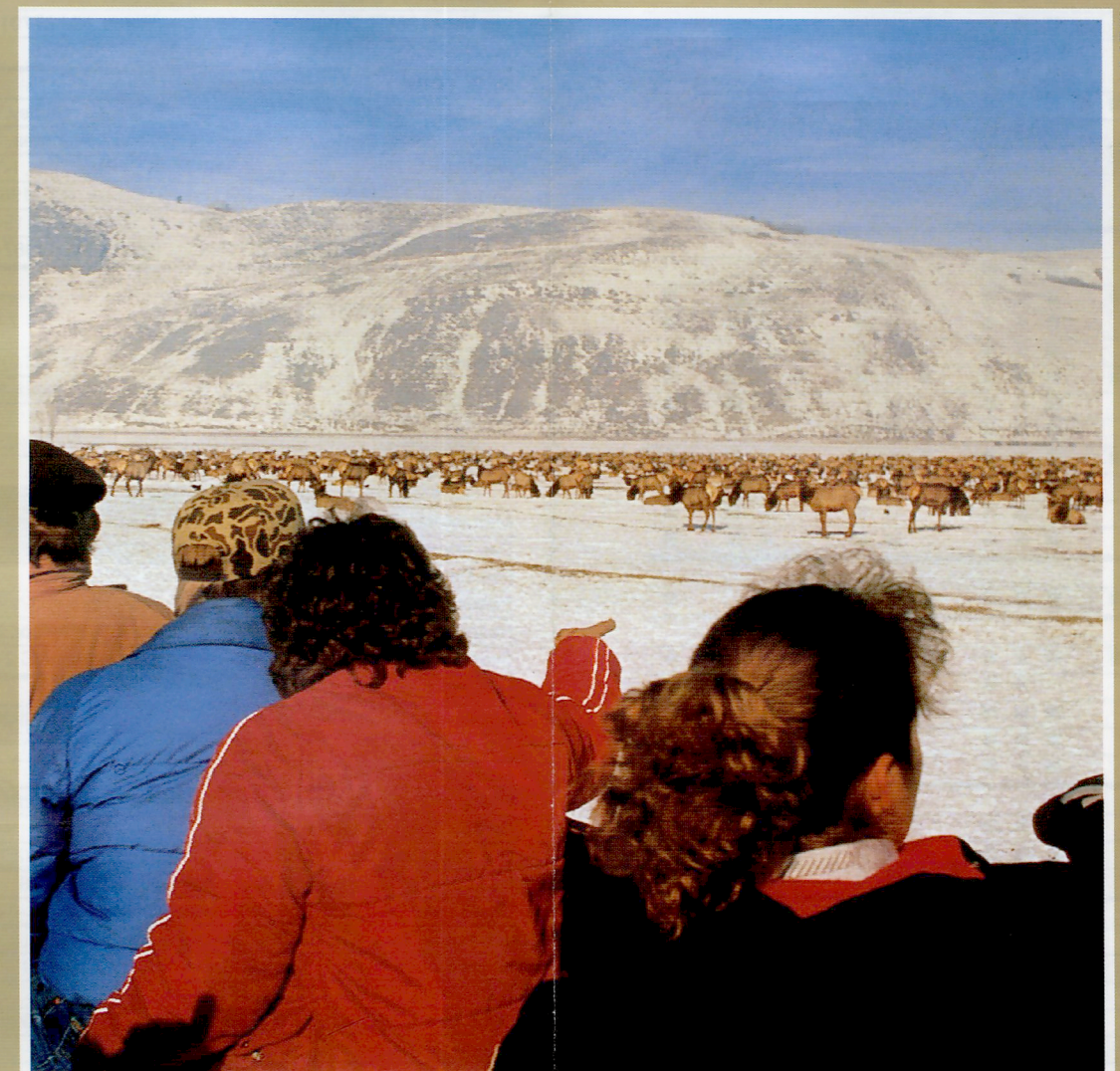
U.S. Department of the Interior
U.S. Fish & Wildlife Service

For additional copies of this guide, please contact any Service office listed below; or call 1 800/344 WILD:



Tips for Visiting National Wildlife Refuges

- Contact the refuge prior to your visit to receive the latest information on access, special activities, regulations, weather conditions, and more.
- Leave only footprints—take only memories. The flower you pick today may be the food that feeds the butterfly tomorrow.
- Keep your distance from wildlife. It is dangerous for you and the wildlife to get too close. When you approach wildlife, they may defend themselves or flee, either way robbing them of precious energy.
- Plan to arrive in the early morning or late afternoon when wildlife is most active. Wildlife generally rest during the heat of the day and stay hidden in the shadows where they are less likely to be seen.
- When driving a tour-route or road, you should remain in your vehicle as it makes an excellent blind. Wildlife is less wary of a slow-moving or stationary vehicle than it is of a potential predator on foot.
- Let us know how we are doing. Your comments are important to us so that we can ensure a quality experience for others.



USFWS—Pacific Region
911 NE 11th Avenue, Eastside Federal Complex
Portland, OR 97232-4181
(CA, ID, HI, NV, OR, WA)

USFWS—Southwest Region
P.O. Box 1306, Albuquerque, NM 87103
(AZ, NM, OK, TX)

USFWS—Great Lakes-Big Rivers Region
1 Federal Drive, Federal Building
Fort Snelling, MN 55111-4056
(IL, IN, IA, MI, MN, MO, OH, WI)

USFWS—Southeast Region
1875 Century Blvd.
Atlanta, GA 30345-3203
(AR, AL, FL, GA, KY, LA, MS, NC, SC, TN, PR)

USFWS—Northeast Region
300 Westgate Center Drive, Hadley, MA 01035-9589
(CT, DE, ME, MD, MA, NH, NJ, NY, PA, RI, VT, VA, WV)

USFWS—Mountain-Prairie Region
Box 25486, Denver Federal Center, Denver, CO 80225
(CO, KS, MT, NE, ND, SD, UT, WY)

USFWS—Alaska Region
1011 East Tudor Road, Anchorage, AK 99503
(AK)

Headquarters
USFWS—Publications Unit
1849 C Street, NW, Webb Bldg., MS 130
Washington, DC 20240