

## Overflow National Wildlife Refuge

Overflow National Wildlife Refuge (NWR) was established in 1980 to preserve one of the remaining bottomland hardwood areas considered vital for maintaining mallard, wood duck and other waterfowl populations. Public hunting is permitted on approximately 13,000 acres during specific times of the year.

### Overflow National Wildlife Refuge

**U.S. Fish & Wildlife Service**

**3858 Highway 8 E**

**Parkdale, AR 71661**

**870-473-2869**

**<https://www.fws.gov/refuge/overflow/>**

The refuge is part of the National Wildlife Refuge System, a national network of lands and waters managed for the benefit of wildlife and people.

**<http://www.fws.gov/>**

**1-800-344-WILD**

## General Regulations

Public use regulations are designed to protect the sportsmen and wildlife populations. The regulations below supplement the general regulations which govern all public use on National Wildlife Refuges as set forth in Title 50, Code of Federal Regulations. All users are permitted on the refuge in accordance with state and federal regulations as supplemented by the following special refuge regulations contained herein. Individuals with fish and wildlife related violations may be denied permits for any refuge activity.

## Permits

Refuge access permits are required for all refuge users. When signed and in your possession, the cover section of this brochure serves as your permit for all permissible refuge activities and acknowledges your understanding of the regulations contained herein.

## Special Hunts

Special Hunt permits are required in addition to the Refuge Access Permits. Permits are non-transferable and nonrefundable. Applications for the Special Youth Turkey Hunt permits will be accepted during the month of January. Waterfowl hunting will be allowed on the Youth Only Waterfowl Unit by a draw hunt only. The Unit will be closed to all entry with the exception of the drawn

permit holder and their guests on drawn hunt days ONLY. The Youth Only Waterfowl Unit will be open on Saturdays and Sundays of the statewide waterfowl season for the drawn permit holders. See website or call the office for more details and how to apply. Applications will be accepted during the month of October.

## Commercial/Special Use Activities

No person including but not limited to a guide, guide service, outfitter, club or other organization shall provide assistance, services, or equipment on the refuge to any other person for compensation. For the purpose of this regulation, any fee paid or services rendered to a person for lodging, meals, club membership or similar services will be considered compensation. Violation of this regulation subjects each hunter in the party to a fine if convicted of this violation.

A Refuge Special Use Permit is required for all commercial activities on the refuge. Permits may be obtained by contacting our Refuge Headquarters with a formal request. All Special Use Permit applications will be subject to a two week turnaround time and applicable fees.

## Motor Vehicles

All motor vehicles are restricted to normal passenger vehicle roads. Roads and trails may be closed to vehicle use due to periods of high water, during wildfire occurrences or other natural events that may pose a hazard to public safety. All Terrain Vehicles (ATV) and Utility Terrain Vehicles (UTV) are allowed on roads, trails and levees designated by ATV signs and are marked with yellow paint. The use of ATV/UTVs is restricted to wildlife-dependent recreation only. Trails marked by yellow paint are open September 1 - January 31. We define an ATV and a UTV as an off road vehicle (not legal for highway use) with factory specifications not to exceed the following: engine size not to exceed 700cc displacement, a width of 63" or less and tires with maximum 1" lug height and maximum allowable tire pressure of 6 psi. Bicycles are permitted on roads and designated ATV trails. The maximum legal speed for any land vehicle is 25 mph.

## Firearms/Ammunition

Persons may only use (discharge) firearms during authorized hunting seasons while attempting to take game species and/or wildlife species approved for incidental take. All hunting weapons used on the Refuge must comply with state regulations for each game species. Possession of shot larger than that legal for waterfowl hunting is prohibited. (continued)

Overflow National Wildlife Refuge

3858 Highway 8 E

Parkdale, AR 71661

870-473-2869

U.S. Fish & Wildlife Service

<https://www.fws.gov/refuge/overflow/>

June 2020



U.S. Fish & Wildlife Service

# Overflow

National Wildlife Refuge  
Public Use Regulations 2020-2021



**This is an annual permit. To save tax dollars,  
please use this permit for the entire season.**

**Overflow National Wildlife Refuge  
2020-2021 Refuge Access Permit  
Expires July 2021**

When signed and in your possession, this portion of the brochure will serve as your permit for all permissible refuge activities, and acknowledges your understanding of the regulations contained herein.

Signature \_\_\_\_\_

Permits are not transferable and are valid only when signed.

Take pride in your Refuge. Don't litter.  
Report violations. 1-844-FWS-TIPS (397-8477)



## 2020-2021 Overflow NWR Hunting Season Dates and Regulations

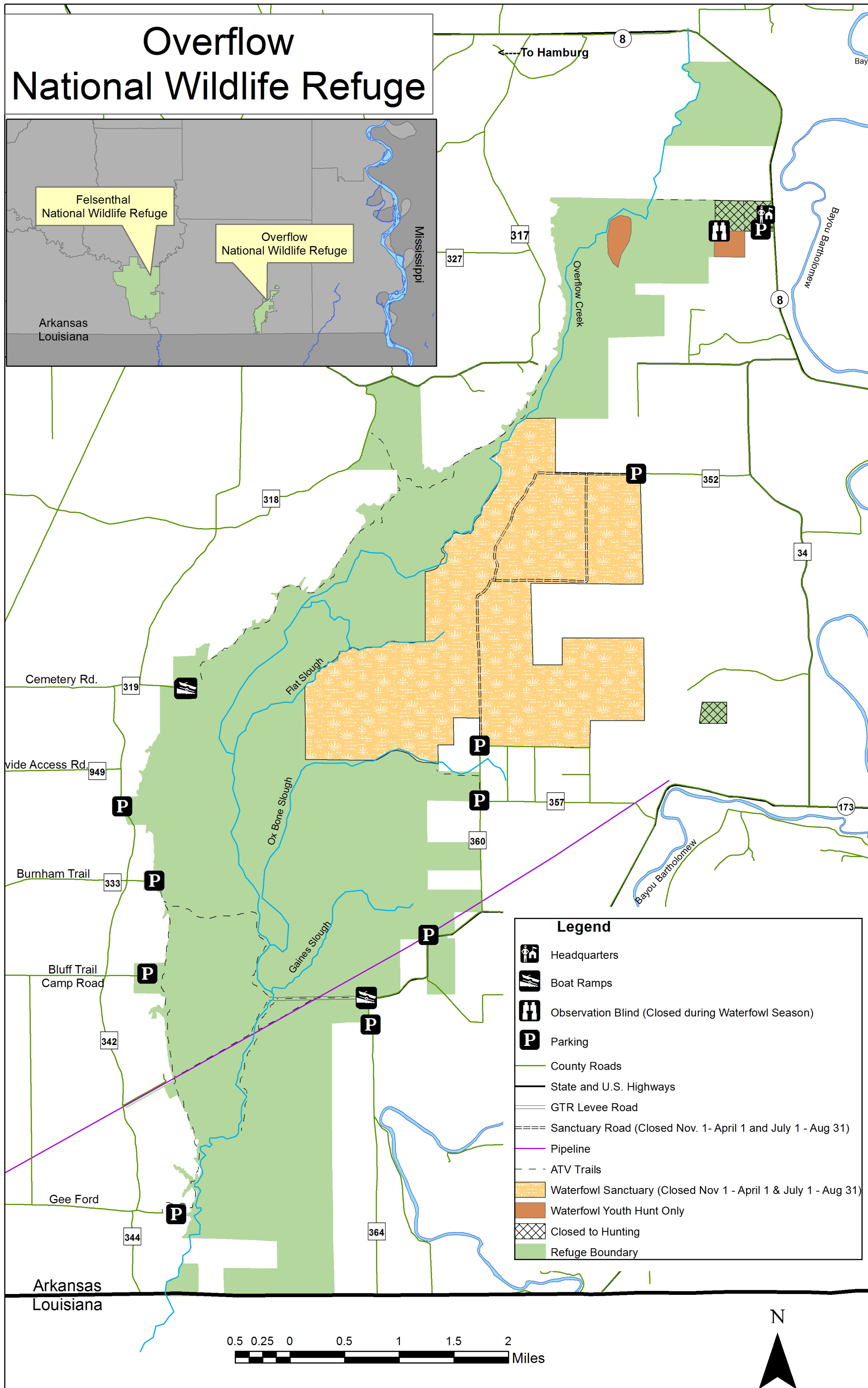
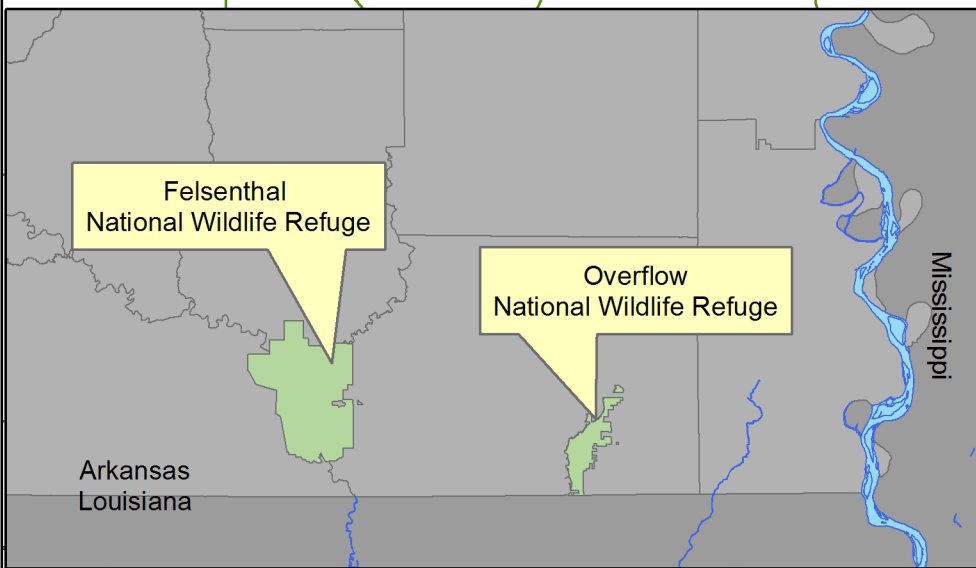
For all deer and turkey harvested on the refuge, the hunter will immediately (prior to moving the animal) complete the hunting license kill information using "Overflow NWR" as zone of kill.

A hunter born after 1968 must carry a valid Hunter Education Card. Hunters under 16 years old do not need to have a card if they are under the direct supervision (within arm's reach) of a holder of a valid hunting license of at least 21 years of age. Youth hunters under the age of 16 who have a valid Hunter Education Card must also be supervised by an adult not less than 21 years old but must only be in sight and normal voice contact with the adult. An adult may supervise only one youth for big game hunting and up to two youths for waterfowl and small game.

- Areas posted with "No Hunting Zone" signs are closed to all hunting.
- Hunting from an area where a shooting lane has been cut is prohibited
- Hunting within 150 feet of roads, trails and pipelines open to motor vehicle use (including ATV/UTV trails) is prohibited.
- Possession and discharge of more than 25 shot shells on persons or in vehicles is prohibited for all hunters during waterfowl hunting season.
- All boats are prohibited on the refuge between the hours of 1:30 pm and 4 am during the waterfowl season to minimize disturbance.
- Possession, placement or hunting over bait, salt or any ingestible attractant is prohibited.

Species	Type	Season Dates	Bag Limits/Harvest	Specific Regulations
<b>Duck, Goose and Coot</b>	Legal method	State Duck Season (including the State Youth Hunts and Special Active Duty Military and Veteran Hunts).  September Teal Season Closed	State bag limit  Geese and Coots may be taken during state duck season when state seasons for these species are open.	Hunters may not enter the refuge until 4 am; with the exception of designated parking areas. Hunting ends at noon each day. Only portable blinds are permitted. All duck hunting equipment (blinds, guns, decoys, ammunition, etc.) must be removed by 1:30 pm each day, either to a vehicle or off the refuge. Unlawful to discharge or possess more than 25 shot shells per person (including vehicles), per day(except during the State Youth Hunt). All boat motors larger than 25 HP are prohibited including traditional motors, surface drive motors, mud motors, etc., are prohibited. To possess, or take or attempt to take waterfowl with the use of, any simulated wing movement decoy or any decoy other than an artificial decoy that imitates the appearance of waterfowl is prohibited. Exception: Manually operated "jerk strings" may be used to simulate decoy movement.
<b>Squirrel and Rabbit</b>	Legal method	Sep. 1 - Jan. 31	State bag limit	Dogs allowed December 1 through January 31.
<b>Woodcock</b>	Legal method	State Season	State bag limit	
<b>Quail</b>	Legal method	Nov. 1 - Jan. 31.	State bag limit	
<b>Raccoon and Opossum</b>	Legal method	Sunset Nov. 12 - Jan. 31	State bag limit	Use of dogs required during hours of darkness.
<b>Deer</b>	Archery/ Crossbow	Sep. 26 - Jan. 31	Either sex for entire season. Legal buck is any male deer. State bag limit	Deer stands may be placed on the refuge starting on the opening day of Archery Season and must be removed by January 31. Limit is one (1) deer stand per person. All stands must be clearly labeled. Portable, pop-up blinds, must have 144 square inches of blaze orange or chartreuse visible from all sides of the blind during firearms Deer seasons on the Refuge. Portable tree stands and ground blinds left unattended must have the owner's Arkansas Game and Fish Commission license customer ID number clearly written in a conspicuous location. Conducting or participating in deer drives. A deer drive is defined as a deliberate action by one or more persons (whether armed or unarmed) whose intent is to cause deer to move within firearm range of one or more participating hunters. The use of deer decoys is prohibited.
	Muzzleloader	First State Season for Zone 12	One buck and one doe. Legal buck is any male deer.	
<b>Turkey</b>	Spring Archery/ Crossbow	Spring State Season	State bag limit	Special Permit Required. Youth Hunt restricted to youth 15 years of age and younger (age at opening of statewide youth turkey season) accompanied by one adult 21 years or older. Turkeys must be checked in accordance with state turkey hunt regulations.
	Spring Gun (Special Youth)	State Youth Hunt Weekend	One (1) legal turkey according to state definition.	
<b>Beaver, Nutria, Coyote</b>		Any Refuge Hunt		May be taken <b>incidental</b> to any <b>daytime</b> Refuge Hunt ( <b>without the use of dogs</b> ) with legal hunting equipment and ammunition allowed for that Hunt.
<b>Feral Hogs</b>		Deer Muzzleloader and Deer Archery Season: Nov. 1 - Dec. 31	No bag limit	In accordance with Arkansas Game and Fish Commission regulations concerning the taking of feral swine on WMAs. Live hogs may not be transported or possessed.
<b>Furbearer</b>	Trapping			Refuge Special Use Permit required and available at refuge office.

# Overflow National Wildlife Refuge



## Firearms/Ammunition - continued

Lead shot is prohibited Refuge wide except during Quota Turkey Hunts. Only rimfire rifles no larger than .22 caliber and shotguns are permitted except during the Muzzleloader and Gun Deer Hunts when hunting equipment legal for these hunts is also permitted. The use or possession of buckshot is prohibited Refuge-wide. Persons possessing, transporting, or carrying firearms on National Wildlife Refuges must comply with all provisions of state and local law. Persons may only use (discharge) firearms in accordance with refuge regulations (50 CFR 27.42 and specific refuge regulations in 50 CFR Part 32).

## Animals/Pets

Dogs are allowed for hunting migratory birds and small game during designated seasons. Dogs and other pets not being utilized for wildlife-dependent recreation must be on a leash. Horses may be used on roads open to vehicles and trails and levees that are open to ATV's/UTV's for on-refuge, wildlife-dependent activities only. Horses are prohibited during the Muzzleloader Hunt.

## Waterfowl Sanctuary

This area is posted with "Area Closed" signs and/or purple paint on trees. The gravel waterfowl sanctuary road is closed November 1 - April 1 and July 1 - August 31. When open, vehicles must remain on this established road as indicated on the map of this brochure. Vehicles may be parked alongside the open road in a manner that will not interfere with the normal flow of traffic or park no more than 20 ft off the graveled road.

The Youth Only Waterfowl Unit (marked with white "Waterfowl Youth Area" signs) is closed to all entry from November 1 through February 15, with the exception of drawn permit holders. Only permitted youth hunters 15 years old and/or younger are allowed to hunt in the Youth Only Waterfowl Unit.

## Physically Challenged Hunters

Physically challenged users are encouraged to consult with refuge staff at the refuge Headquarters for available options and alternatives that may make their visit more enjoyable. Refuge Mobility Impaired Access permits are available and are required to gain special access due to disabilities.

## The following activities are prohibited on Overflow NWR:

- Littering.
- Spotlighting: Artificial light may not be used to locate wildlife.
- Use or possession of alcoholic beverages while hunting; consumption of alcohol in parking lots and on roadways.
- Taking of wildlife or plants (including cutting trees or brush) other than specified in this brochure.
- Fishing and the taking of frogs.
- Possession or use of herbicides.
- Marking trails with tape, ribbons, paint or any other substance or materials.
- Use or possession of any electronic call or other electronic device used for producing or projecting vocal sounds of wildlife.
- Drive or screw a nail, spike or other metal object into a tree or to hunt from any tree in which such an object has been driven.
- Searching for or removing any object of antiquity including arrowheads, pottery or other artifacts.
- Leaving any personal property on the Refuge unattended. Exception: Deer stands and/or deer blinds.
- The use of drones and/or unmanned aircraft.
- Blocking gates, boat ramps or roadways with any vehicles.
- Target practice with any firearms, archery tackle and crossbows or any non-hunting discharge of firearms.
- Firearms, including state-permitted, concealed-carry handguns are prohibited in all refuge offices and buildings.