

U.S. Fish & Wildlife Service

# Patuxent

*Research Refuge*

---

*Amphibians and  
Reptiles*





This goose, designed by J.N. "Ding" Darling, has become a symbol of the National Wildlife Refuge System.

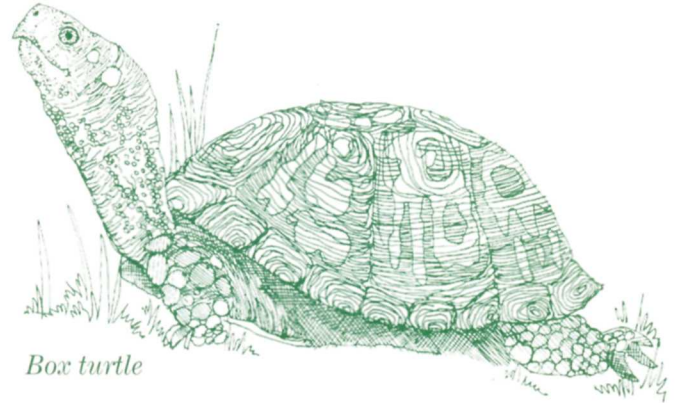
The following species are known to occur on Patuxent Research Refuge. Those species marked with a bullet (•), are most frequently encountered on the refuge.

Please do NOT harass, harm, or collect any species.

### Frogs

- \_\_\_ Eastern spadefoot toad, *Scaphiopus h. holbrookii*
- \_\_\_ • American toad, *Bufo a. americanus*
- \_\_\_ • Fowler's toad, *Bufo woodhousei fowleri*
- \_\_\_ • Northern cricket frog, *Acris c. crepitans*
- \_\_\_ Gray treefrog, *Hyla versicolor*
- \_\_\_ • Spring peeper, *Pseudacris crucifer*
- \_\_\_ Upland chorus frog, *Pseudacris triseriata feriarum*
- \_\_\_ • Bullfrog, *Rana catesbeiana*
- \_\_\_ • Green frog, *Rana clamitans melanota*
- \_\_\_ • Pickerel frog, *Rana palustris*
- \_\_\_ Wood frog, *Rana sylvatica*
- \_\_\_ • Southern leopard frog, *Rana utricularia*

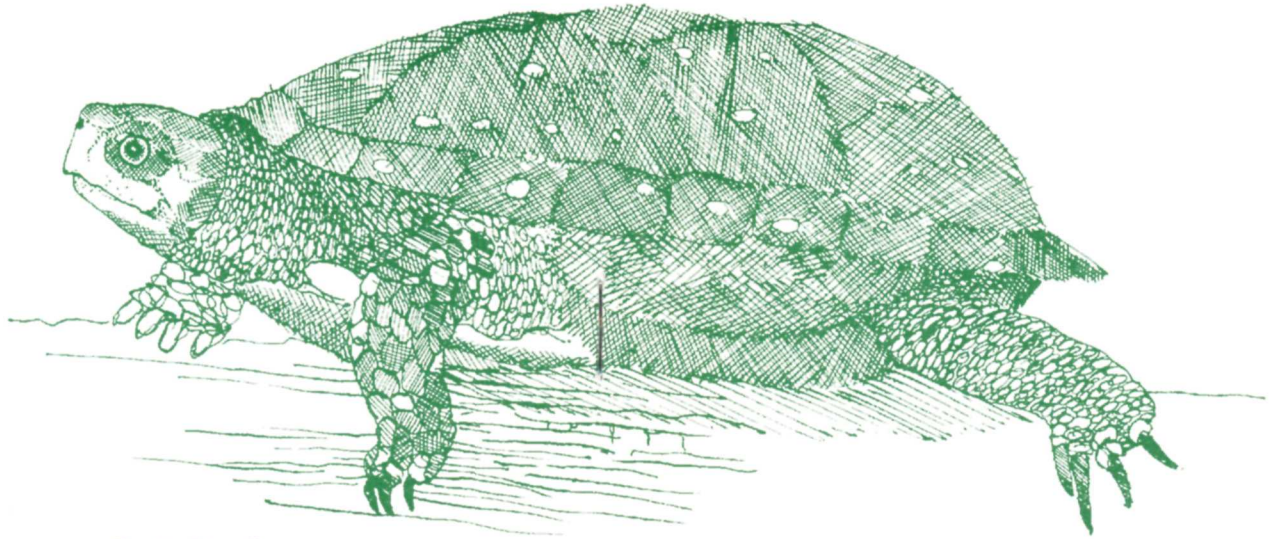
Five-lined skink



Box turtle

### Salamanders

- \_\_\_ Spotted salamander, *Ambystoma maculatum*
- \_\_\_ Marbled salamander, *Ambystoma opacum*
- \_\_\_ Northern dusky salamander, *Desmognathus f. fuscus*
- \_\_\_ Northern two-lined salamander, *Eurycea b. bislineata*
- \_\_\_ Four-toed salamander, *Hemidactylium scutatum*
- \_\_\_ Eastern red-spotted newt, *Notophthalmus v. viridescens*
- \_\_\_ • Red-backed salamander, *Plethodon cinereus*
- \_\_\_ Eastern mud salamander, *Pseudotriton m. montanus*
- \_\_\_ Northern red salamander, *Pseudotriton r. ruber*



*Spotted turtle*

#### Turtles

- Common snapping turtle, *Chelydra s. serpentina*
- Eastern mud turtle, *Kinosternon s. subrubrum*
- Common musk turtle (stinkpot), *Sternotherus odoratus*
- Eastern painted turtle, *Chrysemys p. picta*
- Spotted turtle, *Clemmys g. guttata*
- Red-bellied turtle, *Pseudemys rubriventris*
- Eastern box turtle, *Terrapene carolina*
- Red-eared slider (introduced), *Trachemys scripta elegans*

#### Lizards

- Six-lined racerunner, *Cnemidophorus s. sexlineatus*
- Five-lined skink, *Eumeces fasciatus*
- Broadhead skink, *Eumeces laticeps*
- Ground skink, *Scincella lateralis*
- Northern fence lizard, *Sceloperus undulatus hyacinthinus*



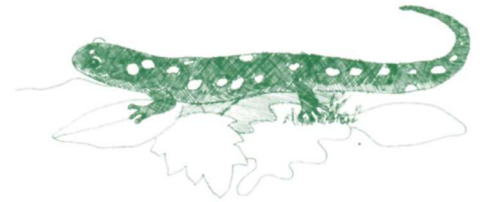
*Eastern garter snake*

## Snakes

- Eastern worm snake, *Carphophis amoenus*
- Northern black racer, *Coluber constrictor*
- Northern ringneck snake, *Diadophis punctatus edwardsi*
- Black rat snake, *Elaphe obsoleta*
- Eastern hognose snake, *Heterodon platirhinos*
- Eastern kingsnake, *Lampropeltis g. getula*
- Eastern milk snake, *Lampropeltis t. triangulum*
- Northern water snake, *Nerodia s. sipedon*
- Rough green snake, *Opheodrys aestivus*
- Queen snake, *Regina septemvittata*
- Northern brown snake, *Storeria d. dekayi*
- Eastern ribbon snake, *Thamnophis s. sauritus*
- Eastern garter snake, *Thamnophis s. sirtalis*
- Smooth earth snake, *Virginia v. valeriae*



*Spring peeper*



*Spotted salamander*

The following amphibians and reptiles may occur on Patuxent Research Refuge, although there are no recent sightings (sightings after 1988). Their presence needs to be verified. If you think you have encountered one of these species, please take a picture or write down a detailed description and report it to Refuge staff.

## Salamanders

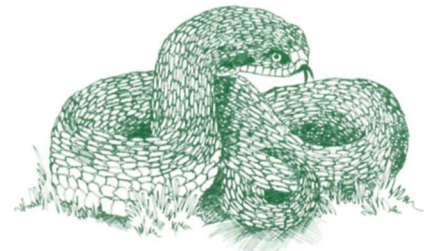
- Long-tailed salamander, *Eurycea l. longicauda*

## Frogs

- Green treefrog, *Hyla cinerea*

## Snakes

- Mole kingsnake, *Lampropeltis calligaster rhombomaculata*
- Northern red-bellied snake, *Storeria o. occipitamaculata*
- Northern copperhead (**venomous**), *Agkistrodon contortrix mokasen*



*Eastern hognose snake*

Patuxent Research Refuge  
10901 Scarlet Tanager Loop  
Laurel, MD 20708-4027  
301/497 5580  
301/497 5765 FAX  
301/497 5779 TDD  
<http://patuxent.fws.gov>

Federal Relay Service  
for the deaf and hard-of-hearing  
1 800/877 8339

U.S. Fish and Wildlife Service  
1 800/344 WILD  
<http://www.fws.gov>

October 2000



U.S. Fish & Wildlife Service

# Patuxent

## *Research Refuge*

### *Amphibians and Reptiles*

