

### General Information

Pond Creek National Wildlife Refuge, established in 1994, is located along the Little and Cossatot Rivers in Southwest Arkansas. Public hunting and fishing is permitted on approximately 27,000 acres during specific times of the year. Special arrangements can be made to accommodate persons with bona fide disabilities by contacting the refuge office.

Individuals utilizing the refuge are subject to inspections of permits, licenses, hunting equipment, bag limits, boats, vehicles, and their contents by refuge or state officers.

To ensure your safety and enjoyment while visiting Pond Creek, please take the time to become familiar with the following regulations.

### General Refuge Regulations

The regulations below supplement the general regulations which govern hunting on National Wildlife Refuges as set forth in Title 50, Code of Federal Regulations. Hunting will be in accordance with applicable State regulations subject to the following conditions.

### Permits are required for all hunts.

When signed and in your possession, the general hunt permit on the front of this brochure serves as your permit for all refuge hunts. The permit must be carried on the hunter's person and is not valid until signed. **Permits are not required for sport fishing, frogging or taking of turtles and crawfish for personal use.**

### Weapons

Firearms and archery tackle are permitted only during designated hunts.

All weapons within 100 yards of a campground must be unloaded. All

weapons transported in any land vehicle or boat under power must be unloaded and encased or dismantled (loaded is defined as shells in gun or cap on muzzleloader). Archery tackle and crossbows must be uncocked with arrow unnocked from string. Only .22 caliber rimfire rifles and shotguns are permitted **except** during the muzzleloader deer hunts.

### Ammunition

Possession of shot larger than that legal for waterfowl hunting is prohibited; use or possession of lead shot is prohibited refuge wide.

### Exception:

During the deer muzzleloader hunts, lead ammunition legal for taking deer may be used.

Small game, furbearers, feral hogs, beaver, nutria and coyotes may be hunted with .22 caliber rimfire lead ammunition during open season.

### Motorized Vehicles

All motor vehicles are restricted to roads that are delineated on refuge map.

### Exception:

Standard manufacturer's high flotation all-terrain vehicles or ATV's (3, 4-wheelers and "Hustlers") with a maximum tire pressure of 5 psi are permitted only on trails designated by ATV signs and marked with yellow or blue paint. Blue painted trails are open year round. Yellow painted trails are open from September 29, 2000 - January 31, 2001.

ATV's are allowed only for wildlife dependent activities. ATV's are not allowed on any improved roads open to conventional vehicles. ATV's may be used on unimproved roads (see map). The maximum legal speed for any land vehicle is 35 mph.

Pond Creek  
National Wildlife Refuge  
P.O. Box 1157  
Crossett, Arkansas 71635  
870/364 3167  
FW4RW Pond Creek@FWS.GOV

U.S. Fish & Wildlife Service  
1 800/344 WILD  
<http://www.fws.gov/~r4eao>

April 2000



U.S. Fish & Wildlife Service

# Pond Creek

## National Wildlife Refuge Hunting Regulations 2000-2001



### Pond Creek General Hunt Permit 2000-2001

I have read and understand these refuge regulations.

\_\_\_\_\_  
Signature of Hunter

This permit is valid only when signed above by the hunter and must be carried on hunter's person.

(Cut out if desired.)

### Animals/ Pets

Dogs are allowed for hunting migratory birds, quail, squirrel, rabbit and raccoons during designated seasons only. Other dogs and pets must be confined or on a leash. Horses are prohibited during the muzzleloader deer hunts. At other times they may be used on roads and trails delineated on refuge map, as open to public use to reach areas open to hunting or fishing.

### Camping

Camping is permitted only in designated camping areas and in conjunction with on-refuge wildlife-oriented activities. Camping area entrances are marked by signs and boundaries are marked with orange paint. Campers may stay no more than fourteen days during any 30 consecutive-day period in any campground. Camps must be occupied daily. All disturbances, including the use of generators, are prohibited after 10 pm. Camping on the refuge while hunting off the refuge is not permitted.

### Fires

Permitted only in camping areas and must be attended. Only downed wood may be used for fires. Caution: During periods of high fire danger all fires may be prohibited.

### Prohibited Activities

Littering

Spotlighting-artificial light may not be used to locate wildlife.

Baiting or hunting over bait, salt or any attractant.

Hunting within 150 feet of roads and trails open to motor vehicle use (including ATV trails).

Target practice

Use or possession of alcoholic beverages while hunting is prohibited.

Consumption of alcohol in plain view in campground, parking lots and on roadways, is also prohibited.

Taking of wildlife or plants (including cutting trees or brush) other than specified in the brochure.

Drive or screw a nail, spike or other metal object into a tree or to hunt from any tree in which such an object has been driven.

Marking trails with tape, ribbon, reflective devices or paint. Use of biodegradable materials permitted.

Searching for or removing any object of antiquity including arrowheads, pottery or other artifacts.

Blocking gates or roadways with vehicles.

### Specific Hunting Regulations

State bag limits, season lengths and weapon regulations apply unless otherwise specified in this brochure. Only those species listed in this brochure may be taken.

A legal buck on all refuge hunts is defined as a deer having a minimum of a two inch hardened antler.

Any hunter under 16 years of age must possess proof of completion of an approved Hunter Safety Course and be accompanied (in sight and in normal voice contact) at all times by an adult 21 or older. Each adult can supervise only **one** youth during big game hunts and no more than two youths during all other hunts.

Only portable deer stands may be used. Stands may be erected two days before each hunt and must be removed within two days after each hunt.

### 2000-2001 Season Dates - For all deer harvested on the refuge, the hunter will immediately (prior to moving the animal) complete hunting license tag using 532 as zone of kill. Also use 532 as zone of kill at check station (central store serves as a check station).

Type	Season Dates	Specific Regulations
Duck, Goose, and Coot	State Duck Season	Hunting ends at noon each day. Only portable blinds are permitted. Blinds, boats and decoys must be removed each day, either to a designated area or from the refuge.
Woodcock	State Season	
Quail	11/1/2000-1/31/2001	
Squirrel and Rabbit	10/7/2000-1/31/2001 (Spring season closed)	Dogs allowed Dec. 1, 2000 - Jan. 31, 2001
Racoon and Opossum	11/18/2000-1/31/2001	Dogs allowed during hours of darkness only. May be taken without dogs during daylight hours.
Deer (archery/crossbow) (Zone 532)	10/1/2000-1/31/2001	State bag limit applies. Three point rule does not apply.
Deer (muzzleloader) (Zone 532)	State Season for Deer Management Zone 14	Archery and Crossbow permitted, state bag limit applies. Three point rule does not apply.
Deer (gun)	Closed	
Turkey	Closed	
Trapping	11/18/2000-1/31/2001	Special refuge permit required and available at refuge office.
Beaver, Nutria, Coyote, and Feral Hog		Any refuge hunt may be taken without the use of dogs during any daytime refuge hunt with weapons legal for that hunt. No bag limits. Live hogs may not be transported. Exception: may be taken with dogs 1/15/2001-1/31/2001.

### Sportfishing and Frogging Regulations

Sportfishing, frogging and taking of turtles and crawfish are permitted in all refuge waters in accordance with State regulations. Trotlines must be secured with cotton line which extends into the water.

### Need Additional Information?

For more copies of this leaflet or other specific information, contact the refuge.

### Pond Creek NWR

560 Polk 246  
Gilliam, Arkansas 71841  
870/386 2700

Office Hours: Monday-Friday  
7:00 am. - 3:30 pm.

or

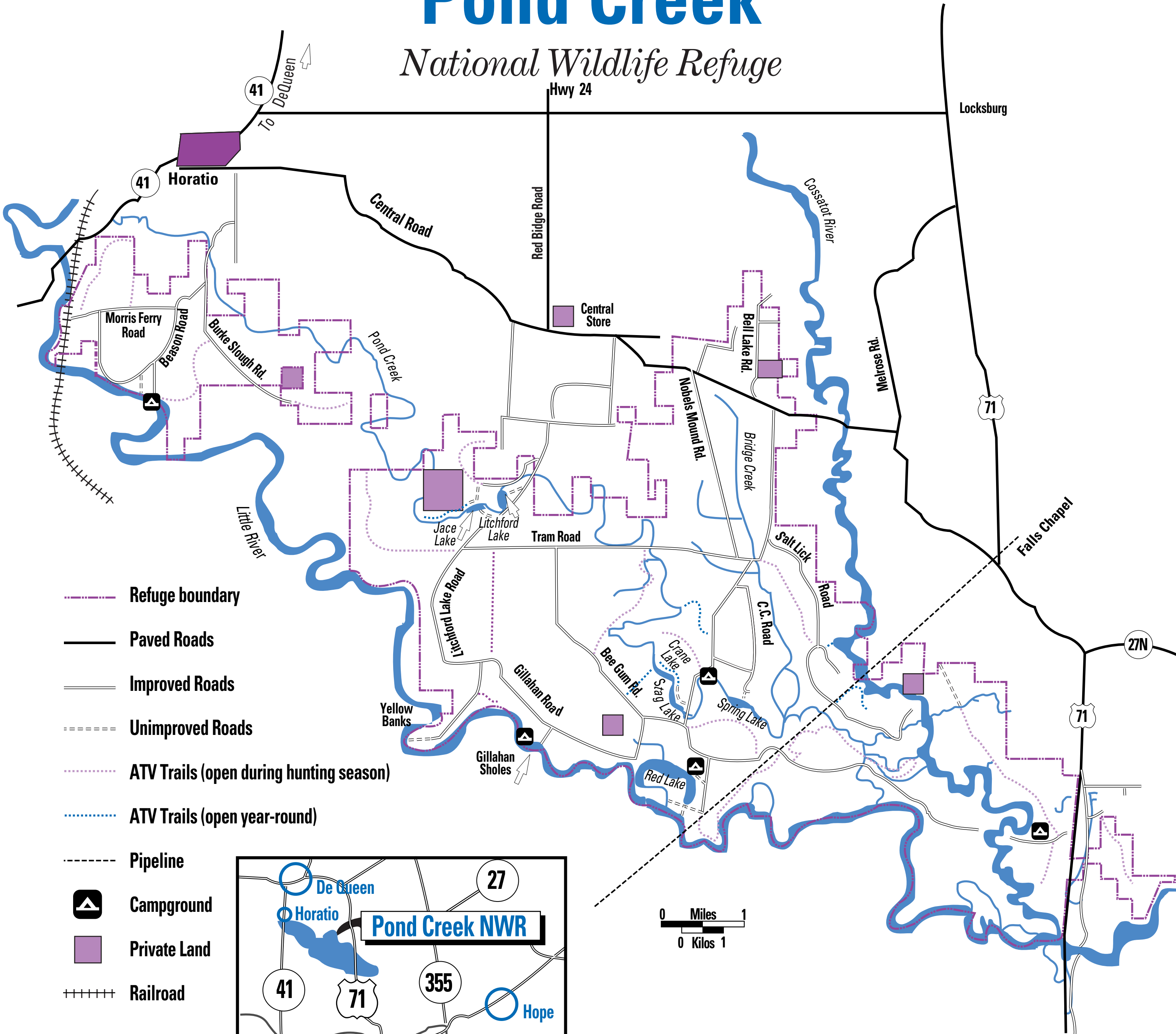
### Felsenthal NWR

P.O. Box 1157  
Crossett, Arkansas, 71635  
870/364 3167

Office Hours: Monday-Friday  
7:00 am. - 3:30 pm.

# Pond Creek

## National Wildlife Refuge



- Refuge boundary
- Paved Roads
- Improved Roads
- Unimproved Roads
- ATV Trails (open during hunting season)
- ATV Trails (open year-round)
- Pipeline
- Campground
- Private Land
- Railroad

