

Here are some questions to think about:

In which habitat (woodlands, grasslands, or wetlands) did you see the most wildlife?

Where do grassland animals find water?

Where do woodland animals find shelter?

What do wetland animals eat?

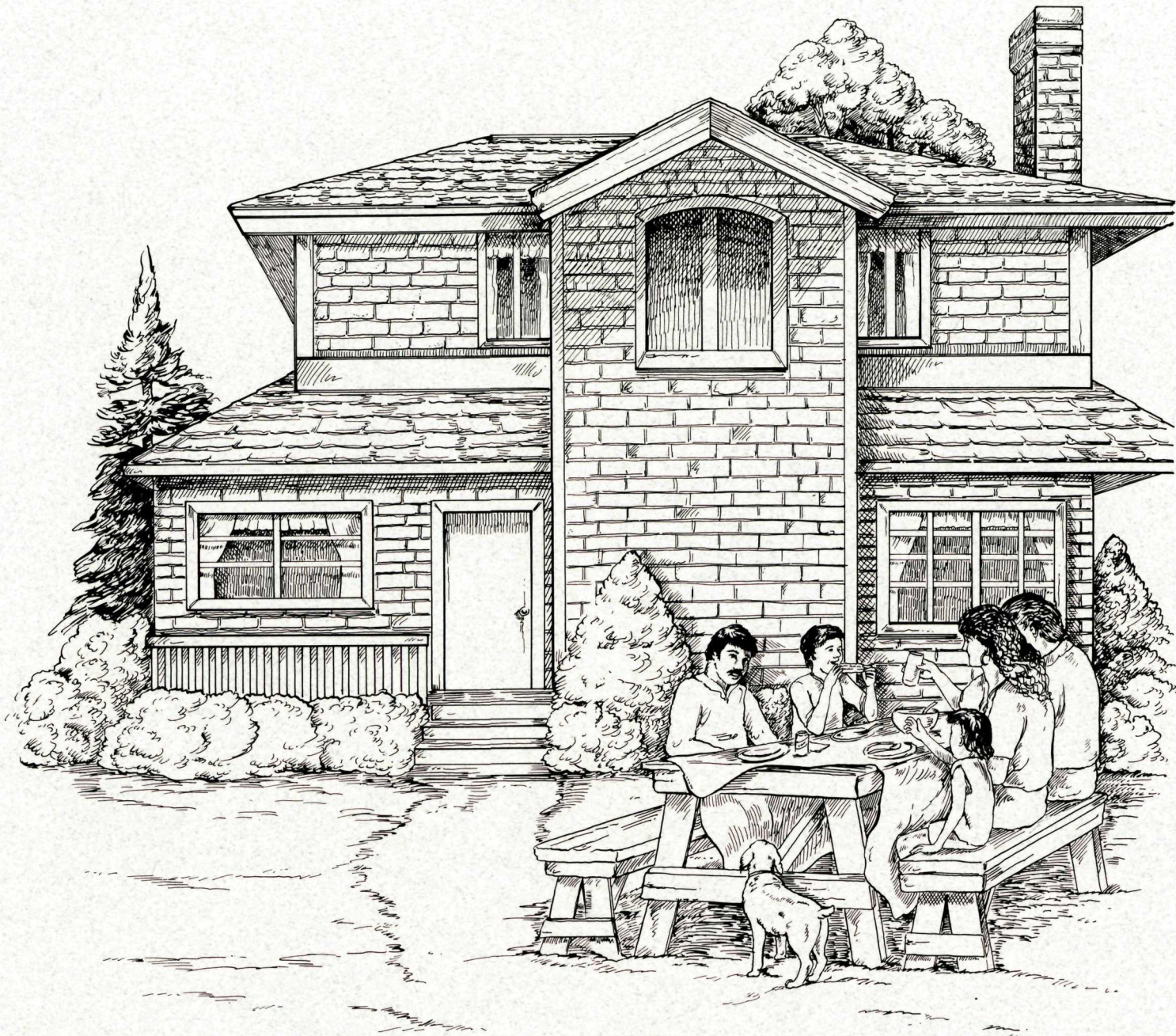
What can you do to protect wildlife and their habitats?

NOTES

For more information, contact:
Rocky Mountain Arsenal
National Wildlife Refuge
Building 613
Commerce City, Colorado 80022
Phone (303) 289-0232

A Kid's Guide to Wildlife





All animals, including people, need nutritious FOOD, clean WATER, safe SHELTER, and enough SPACE to live. The place where an animal finds these things is called its HABITAT. Can you find the parts of your habitat in this picture?

Different animals need different types of habitat. The Rocky Mountain Arsenal National Wildlife Refuge has three main kinds of wildlife habitat: woodlands, grasslands, and wetlands. Animals that live together in each habitat on the Refuge are pictured above their habitat in this brochure.

During your visit to the Refuge, watch carefully for wildlife. Each time you see an animal, put a check mark (✓) beside its picture. If you spot an animal that's not shown here, draw a picture of it above the right habitat. How many different animals can you find?



great horned owl



western meadowlark



ring-necked pheasant



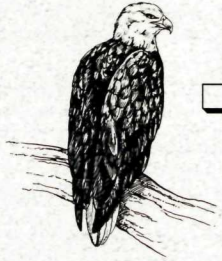
black-billed magpie



Canada goose



mallard



bald eagle



red-tailed hawk



Swainson's hawk



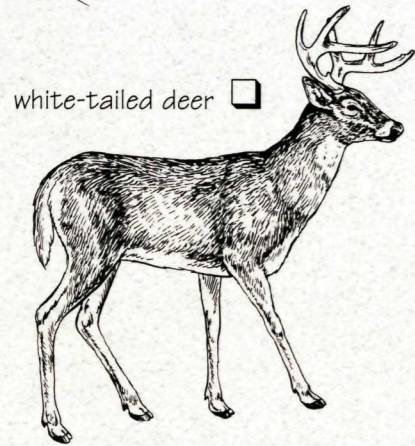
ferruginous hawk



burrowing owl



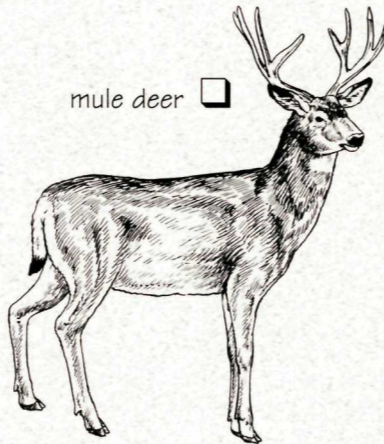
red-winged blackbird



white-tailed deer



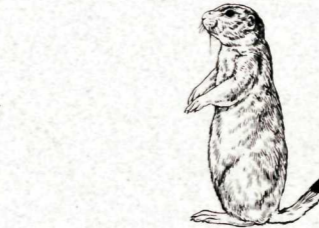
coyote



mule deer



black-tailed jackrabbit



black-tailed prairie dog



muskrat



great blue heron



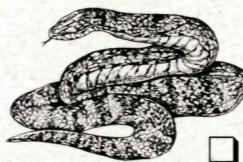
fox squirrel



deer mouse



western rattlesnake



bullsnake



Woodhouse's toad



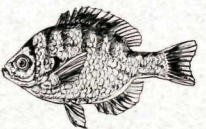
plains garter snake



bullfrog



tiger salamander



bluegill

WOODLANDS

GRASSLANDS

WETLANDS