

Visitor Center

Sacramento NWR hosts the Visitor Center for the Sacramento NWR Complex, where you can enjoy our bookstore, Discovery Room, and displays.



Native plant garden and interpretive panels at the Visitor Center



Diorama (top) and Discovery Room

Wetland Walk



Sit a while and enjoy the shade after hiking the 2-mile Wetland Walk Trail.

Auto Tour



Stay in your vehicle while driving the 6-mile Auto Tour, but get out and stretch at one of the 3 Park-and-Stretch areas. Take in the view at the Observation Platform.



Sacramento National Wildlife Refuge Complex
752 County Road 99W
Willows, CA 95988
Phone: 530 934 2801
www.fws.gov/refuge/sacramento

For further information on Refuge hunting, wildlife observation, environmental education, or photography, please use our contact information listed above.

U.S. Fish & Wildlife Service
<http://www.fws.gov>

For Refuge Information
1 800/344-WILD

California Relay Service
TTY 1 800/735-2929
Voice 1 800/735-2922

Visitors with disabilities may be reasonably accommodated upon request, and/or receive an alternative format publication.

September 2016

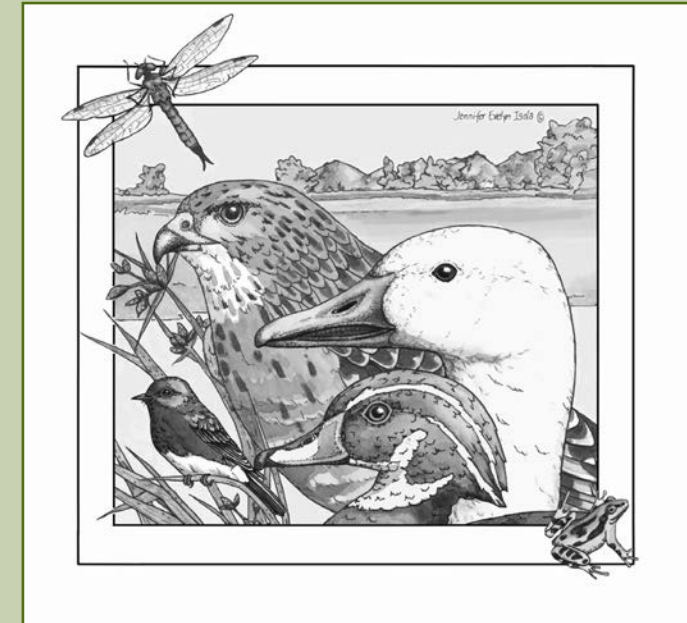


U.S. Fish & Wildlife Service

Sacramento

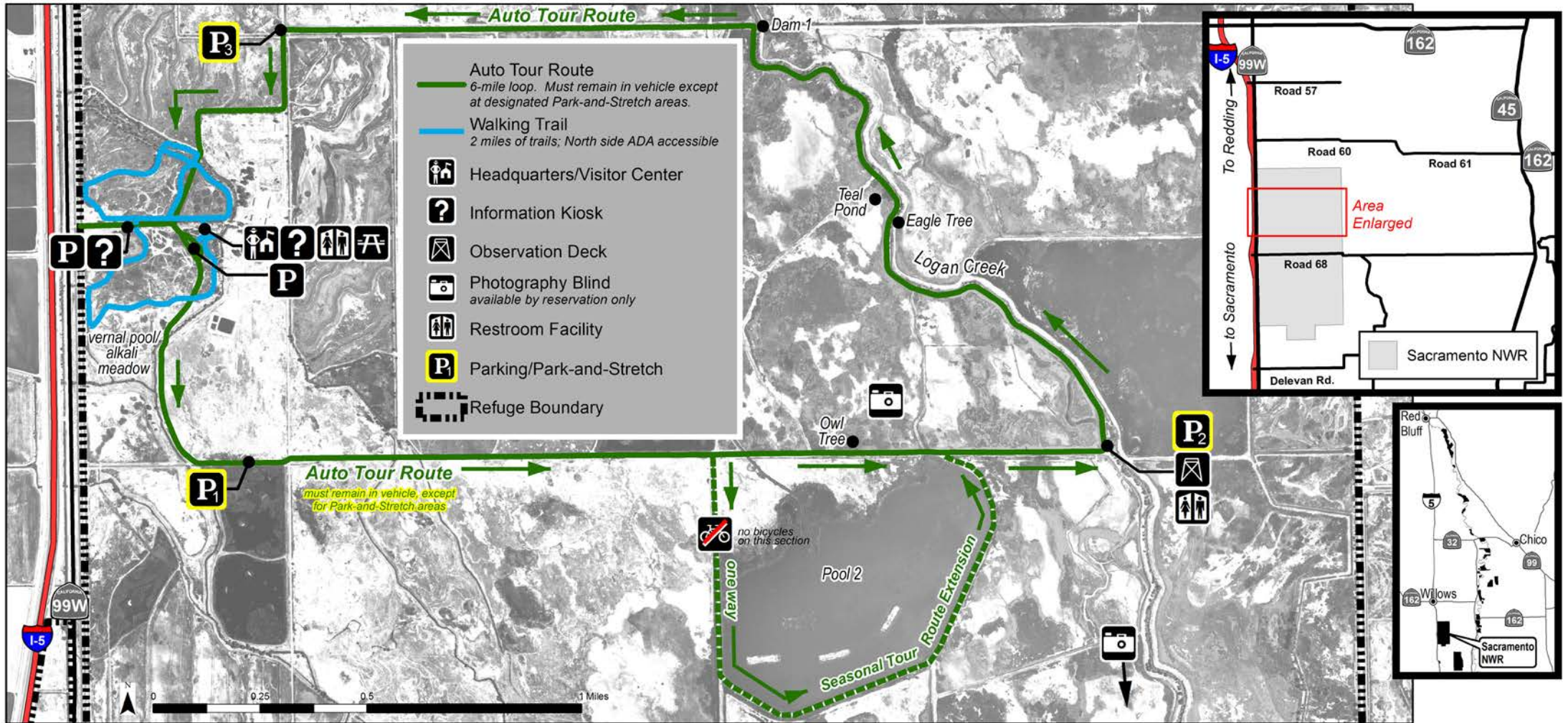
National Wildlife Refuge

Visitor Center, Auto Tour & Wetland Walk



Open Year-Round

Sacramento National Wildlife Refuge - Visitor Center, Auto Tour & Wetland Walk



General Information: Entrance fee (pay at entrance kiosk). Area open year-round. Please respect all signs and area closures.

- Day use only -**
Auto Tour and trails open 1 hour before legal sunrise to 1 hour after legal sunset.
Visitor Center open (Nov-Feb) 9am-4pm every day
(Mar-Oct) 9am-4pm Mon-Fri
closed on federal holidays
- Parking/Park-and-Stretch -**
Parking is allowed only in designated areas. Three Park-and-Stretch areas (P1-P3) are designated along the Auto Tour, otherwise you must remain in your vehicle.
- Dogs -** are welcome, but must be kept on leash.
- Hiking -** Foot access on marked trails only. Follow the mowed/dirt trails.
- Bicycles -** Bicycles permitted ONLY on Auto Tour, ONLY from May 15 - Aug 15. Stopping only permitted in Park-and-Stretch areas. Bicycling is otherwise prohibited. Bicycles are prohibited on Pool 2 extension. Carrying a tire repair kit is recommended.

- Photography Blind -**
Blinds are available by reservation only. Visit our website for details.
- Wildlife Observation -**
Visit our website to find out about educational activities and birding tours.
- Hunting -** Hunting is allowed only in designated areas (not pictured on this map) within the designated season. See our website for regulations and details.
- Fishing is prohibited.**
- Camping is prohibited.**
- Take out what you bring in. Littering is unlawful!**

Additional maps are available for our Logan Creek Trails and for our Hunt Area. Please visit our website for details: www.fws.gov/refuge/sacramento