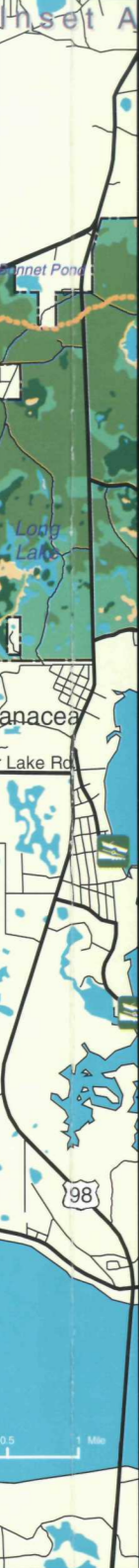


Ponds and lakes accessible from County Road 372 (Surf Road) are open year-round for fishing and boating.

Refuge Road, 316, circling Otter Lake, will be open to vehicles March 15th to May 15th each year.



The canals, pools, and impoundments on the St. Marks Unit are closed to boats October 15th to March 15th each year.



For current bag limits and regulations, consult the Florida Fish and Wildlife Conservation Commission web site at: www.MyFWC.com

Resource Hotlines

To Purchase Fishing Licenses: 888 347 4356
 Law Enforcement Violations: 888 404 3922
 Enviro-Line: 800 828 9338

- (A) East River Pool
- (B) Stoney Bayou no. 1
- (C) Stoney Bayou no. 2
- (D) Mounds Pool no. 1
- (E) Mounds Pool no. 2
- (F) Mounds Pool no. 3
- (G) Tower Pond
- (H) Picnic Pond
- (I) Headquarters Pond
- (J) Lighthouse Pond

Ecosystems		Color Key	
Open water	Lowland hardwoods	Grasslands	
Freshwater & saltwater marsh	Flatwoods pine & mixed hardwoods	Infrastructure & recreational	
Coastal salt flats	Upland pine & mixed hardwoods	Florida Trail	

Fishing Regulations

- Fishing is allowed year-round in the refuge in accordance with state regulations.
- The gates at Lighthouse Rd. and Otter Lake Recreation Area are open 6am to 7pm during standard time, and until 9pm during daylight savings time. (daylight savings time begins on the second Sunday in March, and ends on the first Sunday in November)
- Fishing in the refuge lakes, ponds, and impoundments is allowed during daylight hours.
- Taking frogs and turtles from refuge is prohibited.
- Taking blue crabs from impoundments or canals on the St. Marks Unit is prohibited.
- The use of cast nets or traps in the refuge lakes, ponds, and impoundments is prohibited.
- Bow fishing is prohibited on refuge lakes, ponds, and impoundments.
- Commercial boats, boats with air-thrust motors, and personal watercraft are prohibited from launching at the lighthouse boat ramp.
- Boats with air-thrust motors, and personal watercraft are prohibited from launching at the Wakulla Beach boat ramp.
- Boats with over 10 h.p. motors are prohibited on all the Panacea Unit of the refuge. Only hand-launched boats with electric motors allowed on the St. Marks unit pools.
- All fish must remain in whole condition when being transported from the refuge.
- Fishing equipment must be attended at all times.
- Please observe all refuge signage, and do not trespass in restricted areas.

U.S. Fish & Wildlife Service



St. Marks

National Wildlife Refuge Fishing Guide

**St. Marks
National Wildlife Refuge**
 P.O. Box 68
 St. Marks, Florida
 32355
<http://www.fws.gov/saintmarks>
 (850) 925 6121

NOT FOR
RESALE

Fresh Water Fish



Largemouth Bass



Yellow Bullhead Catfish



Black Crappie



Redear Sunfish



Bluegill

Salt Water Fish



Flounder



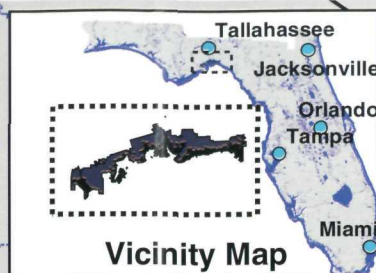
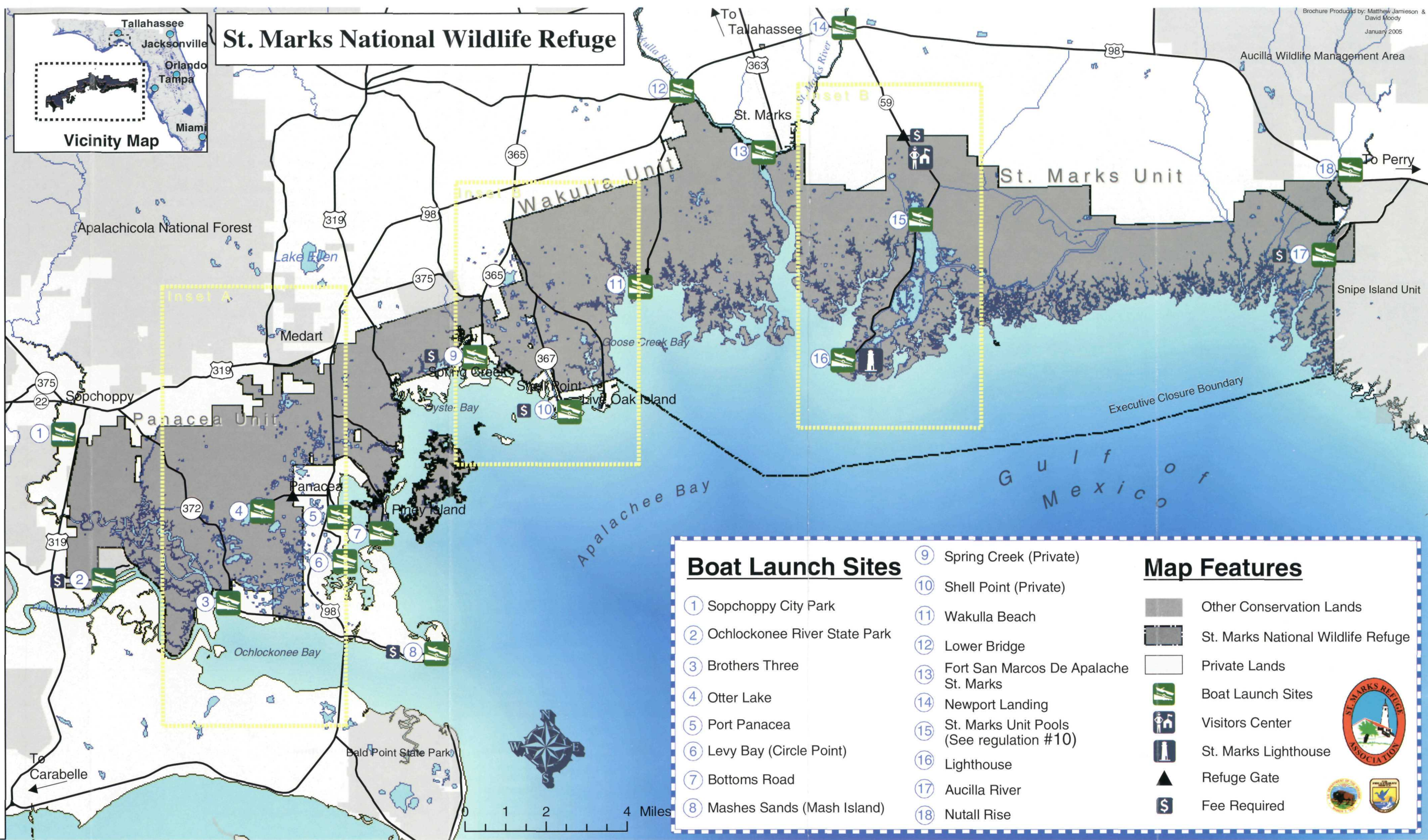
Spotted Sea Trout



Red Drum

Illustrations by Diane Rome Peebles
 Provided by the Florida Fish and Wildlife
 Conservation Commission,
 Division of Marine Fisheries Management

St. Marks National Wildlife Refuge



Boat Launch Sites		Map Features	
① Sopchoppy City Park	⑨ Spring Creek (Private)	Other Conservation Lands	
② Ochlockonee River State Park	⑩ Shell Point (Private)	St. Marks National Wildlife Refuge	
③ Brothers Three	⑪ Wakulla Beach	Private Lands	Boat Launch Sites
④ Otter Lake	⑫ Lower Bridge	Visitors Center	St. Marks Lighthouse
⑤ Port Panacea	⑬ Fort San Marcos De Apalache St. Marks	St. Marks Lighthouse	Refuge Gate
⑥ Levy Bay (Circle Point)	⑭ Newport Landing	Fee Required	
⑦ Bottoms Road	⑮ St. Marks Unit Pools (See regulation #10)		
⑧ Mashas Sands (Mash Island)	⑯ Lighthouse		
	⑰ Aucilla River		
	⑱ Nutall Rise		