

Spring and Summer Opportunities

As you explore this area on foot, use binoculars and spotting scopes to bring wildlife closer into view without disturbing them.



The Wildlife Checklist is a great list of the common to rare birds and other wildlife. Make sure to grab one when you sign in at the Information Kiosk.

●●●● The trails marked in blue and black are great places to observe and photograph ducks, raptors and wading birds.



Cinnamon teal



Refuge birding tour using trails

●●●● The trails marked in red will take you under the riparian forest canopy, where you can enjoy the variety of songbirds. Birds, such as the Western kingbird and spotted towhee, depend on the forest habitat for migration corridors and nesting areas.



Western Kingbird



Spotted Towhee

Sacramento National Wildlife Refuge Complex
752 County Road 99W
Willows, CA 95988
Phone: 530 934 2801
www.fws.gov/refuge/sutter

For further information on Refuge hunting, wildlife observation, environmental education, or photography, please use our contact information listed above.

U.S. Fish & Wildlife Service
<http://www.fws.gov>

For Refuge Information
1 800/344-WILD

California Relay Service
TTY 1 800/735-2929
Voice 1 800/735-2922

Visitors with disabilities may be reasonably accommodated upon request, and/or receive an alternative format publication.

February 2017

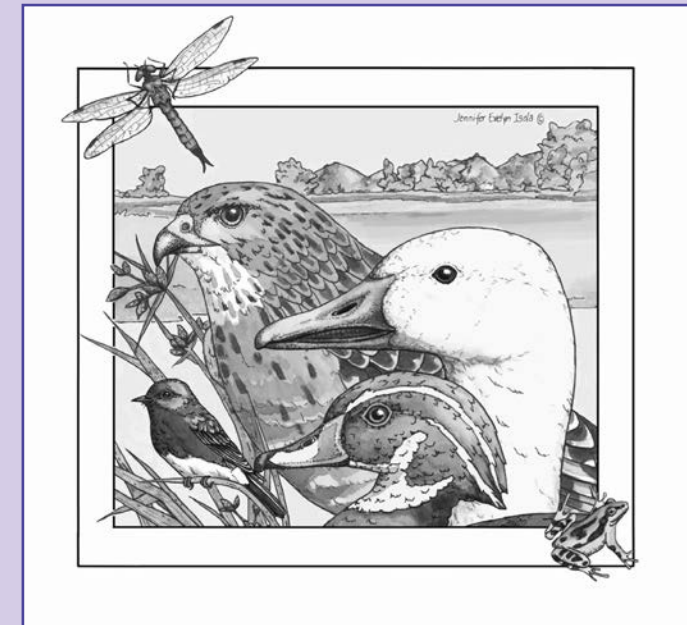


U.S. Fish & Wildlife Service

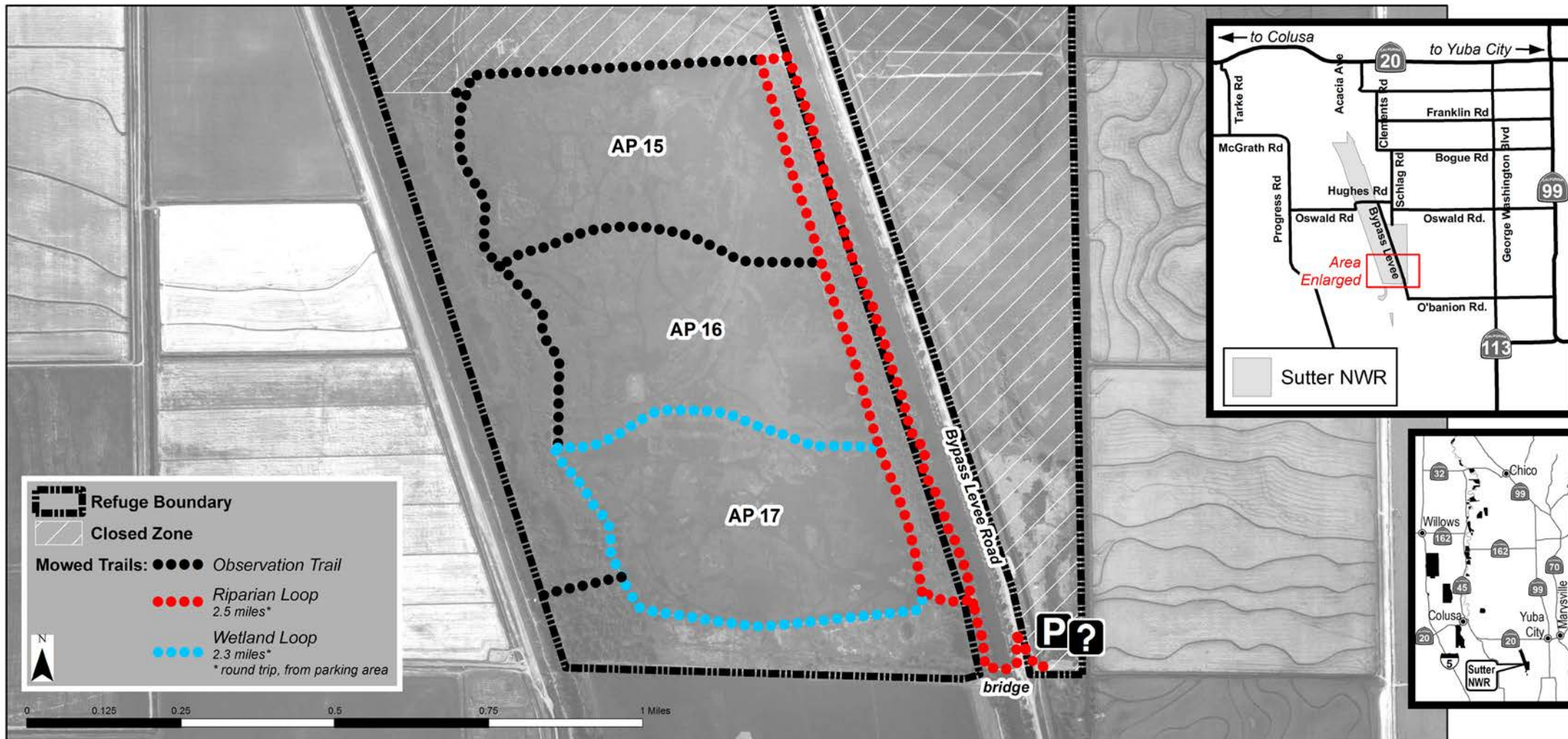
Sutter

National Wildlife Refuge

Wildlife Viewing & Photographic Opportunities



Open February 15 - June 30



General Information: *There are no recreation fees. Area open Feb 15 - June 30. Please respect all signs and area closures.*

Day use only - open 1 hour before legal sunrise to 1 hour after legal sunset.

Information/Parking - Access beyond parking area is only by foot; park in designated area.

Dogs are welcome but must be kept on leash.

Hiking - Foot access only. Follow the mowed/dirt trails for easiest access.

Bicycles, horses and motorized vehicles are prohibited.

Fishing is prohibited.

Wildlife Observation - Visit our website to find out about educational activities and birding tours. Please check in/check out on the registration sheet when arriving/leaving.

Photography - Please check in/check out on the registration sheet when arriving/leaving.

The Assigned Pond (AP) signs will help you follow the trails

Take out what you bring in. Littering is unlawful!

No restroom facilities available.

Additional maps are available on our Hunt Area. Please visit our website for details: www.fws.gov/refuge/sutter

Be Prepared! *This is a natural and wild area. You may encounter ticks, mosquitoes and wasps.*