

U.S. Fish & Wildlife Service

Tennessee National Wildlife Refuge

Visitor Center



Photo: Clayton Ferrell



Tennessee National Wildlife Refuge

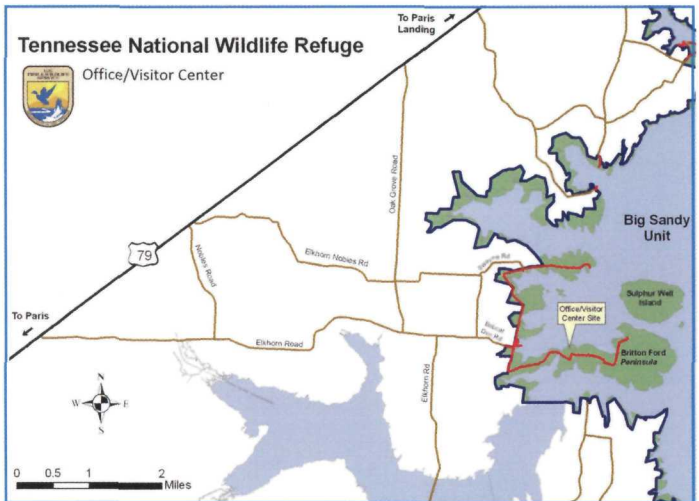
Containing 51,358 acres of water, forests, farmland and grasslands, this refuge is located on and around Kentucky Lake in Northwest Tennessee. Established in 1945, the refuge is managed by the U.S. Fish and Wildlife Service as an important resting and feeding area for wintering waterfowl and other migratory birds. The refuge's three units, Big Sandy, Duck River, and Busseltown, stretch for 65 miles along the Tennessee River.

Visitor Opportunities:

- Hunting
- Fishing
- Boating/Kayaking
- Environmental Education
- Hiking
- Photography
- Wildlife Observation

Hours and Directions:

The refuge is open daily from sunrise to sunset, except for select areas. Visitor Center Hours are Monday – Saturday from 8 am – 4 pm. Located in Northwest Tennessee about a 15 minute drive from Paris. Turn onto Oak Grove Road South from Highway 79 North of Paris and follow directional signs. Refuge trail maps and public use information available at the refuge, office, online, and at refuge kiosks.



Tennessee NWR, 1371 Wildlife Drive, Springville, TN 38256
Phone: 731/642 2091, <http://www.fws.gov/refuge/Tennessee>