

Tishomingo

National Wildlife Refuge and Wildlife Management Unit Fishing Regulations



Welcome

Tishomingo National Wildlife Refuge was established in 1946 as an overlay of part of Lake Texoma in south-central Oklahoma. Habitat within the 16,464 acre refuge is managed for a variety of birds and other wildlife.

Regulations and types of activities permitted differ between the refuge and the Wildlife Management Unit (WMU). The WMU is managed through a U.S. Fish and Wildlife Service partnership with the Oklahoma Department of Wildlife Conservation (ODWC) and follows Oklahoma State regulations.

Accessibility

Equal opportunity to participate in and benefit from programs and activities of the U.S. Fish and Wildlife Service is available to all individuals regardless of physical or mental ability. For more information please contact the U.S. Department of the Interior, Office of Equal Opportunity, <https://www.doi.gov/pmb/eeo/public-civil-rights>.

Safety

Portions of the refuge do not have cell phone coverage. Venomous snakes along with a variety of biting and stinging insects may be present on the refuge and WMU.

Firearms

Persons possessing, transporting, or carrying firearms on National Wildlife Refuge System lands must comply with all provisions of State and local law. Persons may only use (discharge) firearms in accordance with refuge regulations (50 CFR 27.42 and specific refuge regulations in 50 CFR Part 32).

Vehicles

Licensed motor vehicle access is allowed on designated roadways year-round (except during muzzleloader and gun deer seasons in the WMU). No off-road driving is permitted. ATVs, UTVs, and ORVs are prohibited.

Boats

- The boating season runs from March 1 through September 30 on refuge waters except for all lakes south of the Washita River and on the WMU, which are open year round. The exception is Goose Pen Pond, where no boating is allowed.
- Motorized boats may only be launched on the refuge at designated boat ramps located at the campground, Murray 23, and Rock Creek. Hand launching of canoes, kayaks, and two-person boats is allowed at Nida Point, the campground boat ramp and Murray 23.
- All state and federal regulations apply to boats using the refuge.
- Hazards: Cumberland Pool contains floating debris and submerged concrete structures.
- Airboats, hovercraft, and personal watercraft such as jet skis are not allowed on the refuge.
- Tube fishing or fishing with the aid of an inner tube-type flotation as part of a pair of waders on Cumberland Pool or refuge lakes is allowed during the boating season (March 1 through September 30).
- Night fishing is permitted from a boat (during boating season) on the Cumberland Pool, except at Sandy Creek Peninsula and the Bird Sanctuary Zones. The Bird Sanctuary Zones are designated by signs and buoys (see map).

Fishing Regulations

Fishing regulations are designed to provide safe recreational opportunities through wise use of renewable wildlife resources. Fishing is permitted in accordance with Federal regulations governing public use on National Wildlife Refuges as set forth in Title 50 of the Code of Federal Regulations.

Fishing will be in accordance with applicable State of Oklahoma regulations subject to the conditions stated below.

Fishing with hook and line is allowed on designated areas of the refuge subject to the following conditions:

- Bank and wade fishing with pole and line or rod and reel is permitted year-round in areas open for public fishing access. This also includes night fishing.
- All refuge ponds are closed to fishing from October 1 through February 29, except Rock Creek and Bell Creek, which are open all year.
- You must possess a valid State of Oklahoma or Lake Texoma fishing license while fishing.
- Taking of bait for personal use while fishing on the refuge is allowed in accordance with state law but you may not take bait fish from the refuge to sell (limit is up to 200 non-game fish).
- During the boating season, trotlines are allowed in the Cumberland Pool, Rock Creek, and Washita River (unless indicated on map) in accordance with Oklahoma State law.
- Trotlines used in the Cumberland Pool must not be attached to sticks, poles, trees, buoys, or other fixed objects. The owner's name and address or customer ID must be visible.
- Trotlines are restricted to no more than 3 lines and 100 hooks per person. Hooks must be no less than 24 inches apart. Trotlines must be checked at least once every 24 hours.

11766 South Refuge Road
Tishomingo, OK 73460

580-371-2402

U.S. Fish & Wildlife Service
1-800-344-WILD

July 2023



- Trotlines must be made of non-metallic materials only and are not permitted in depths less than 3 feet. Lines must be 3 feet or more below the water surface.
- We allow the use of bow and arrow to take non-game fish on the Washita River, Pennington Creek, and the WMU during daylight hours in accordance with state regulations.

Access

WHEN: Night time traffic is prohibited except for night fishing and camping. Boating season runs from March 1 through September 30 on refuge waters. The WMU is open to boating and fishing year-round.

WHERE: Vehicles must park in designated parking areas, as identified on the map below, to access the

refuge for fishing. Access to the refuge from private property is prohibited.

Camping is allowed in designated campsites, but not to exceed 14 days.

Harvest Reporting

Largemouth, smallmouth, and spotted bass; black and white crappie; rainbow and brown trout; sauger, saugeye and walleye; white and striped bass; and blue and channel catfish are considered game fish by the state. Alligator gar has a daily limit of one and must be reported to ODWC within 24 hours.

Species	Size Limit	Daily Limit
White/Black Crappie	10 inch minimum	37
Channel/Blue Catfish	No size limit	15 Combined but only 1 blue catfish > 30" per day
Flathead Catfish	20 inch minimum	5
Striped/Hybrid Bass	Only 2 may be longer than 20 inches	10 Combined
White Bass	No size limit	25
Largemouth/Smallmouth	14 inch minimum	5 Combined
Spotted Bass	No size limit	5 Combined with Largemouth/Smallmouth

Species not listed are considered non-game fish. There are no daily or minimum size limits on nongame fish other than flathead catfish and shad.

Signs and Boundaries

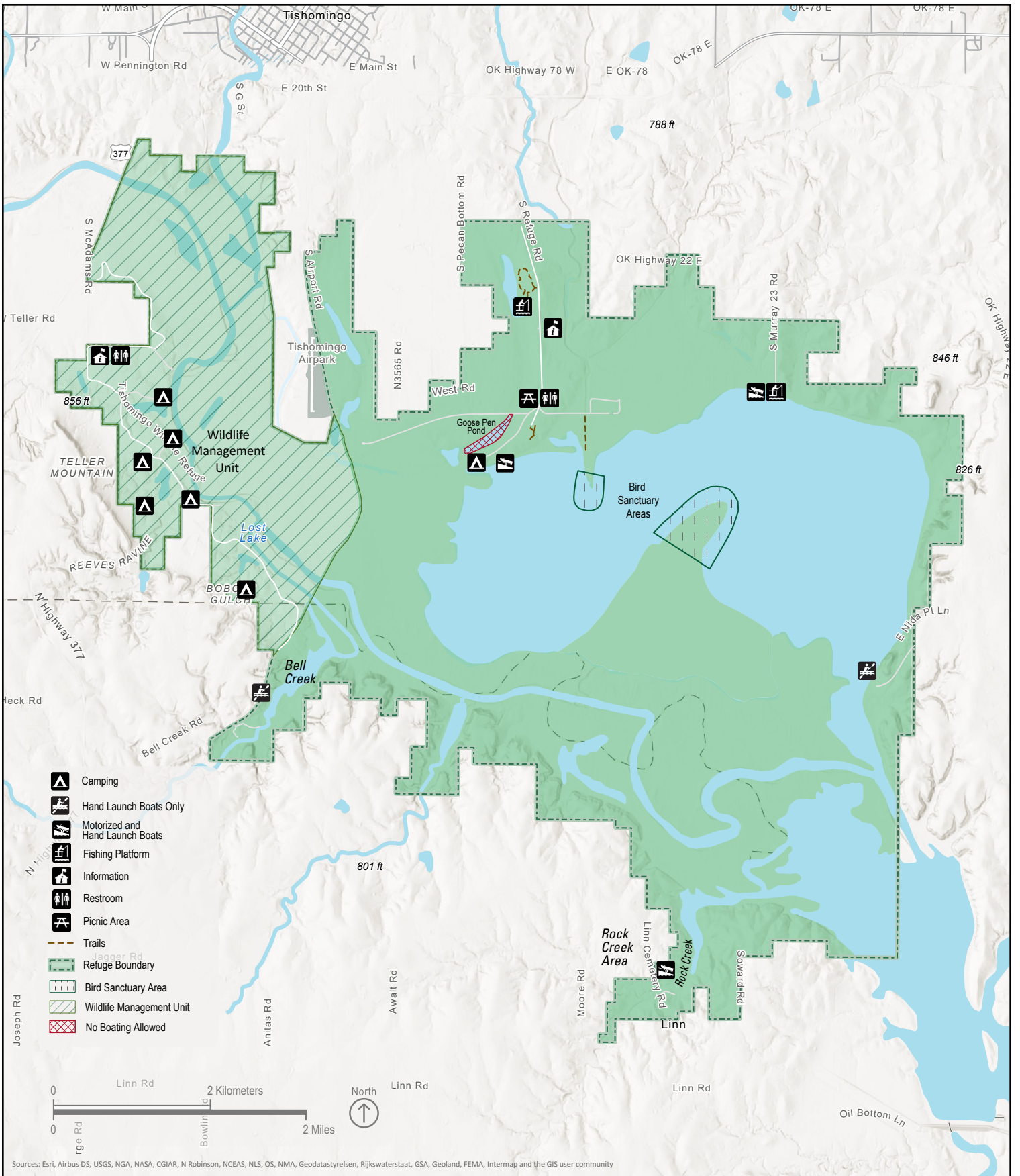
Please respect the following signs:

- No vehicles: All Traffic prohibited.
- Parking area: Designated areas to park while hunting or fishing. Applies to the area located behind the sign.
- Refuge Boundary: Entry permitted in accordance with refuge regulations.
- Closed Area: All entry prohibited.

Prohibited Activities

- Searching for or removal of any property from a National Wildlife Refuge (NWR). This includes plants, animals and/or their parts, objects of antiquity, artifacts, and valued objects.
- Access to the refuge from private property.
- Use of containers (jugs, bottles) as floats is not allowed.
- Limblines, throw lines, jug lines, yo-yo's and noodling are not allowed on the refuge or the WMU.
- Taking of frogs, turtles, and mussels from refuge lands and waters is not allowed.
- Boating, fishing, and entry into the Bird Sanctuary Zone(s).





Sources: Esri, Airbus DS, USGS, NGA, NASA, CGIAR, N Robinson, NCEAS, NLS, OS, NMA, Geodastayreisen, Rijkswaterstaat, GSA, Geoland, FEMA, Intermap and the GIS user community