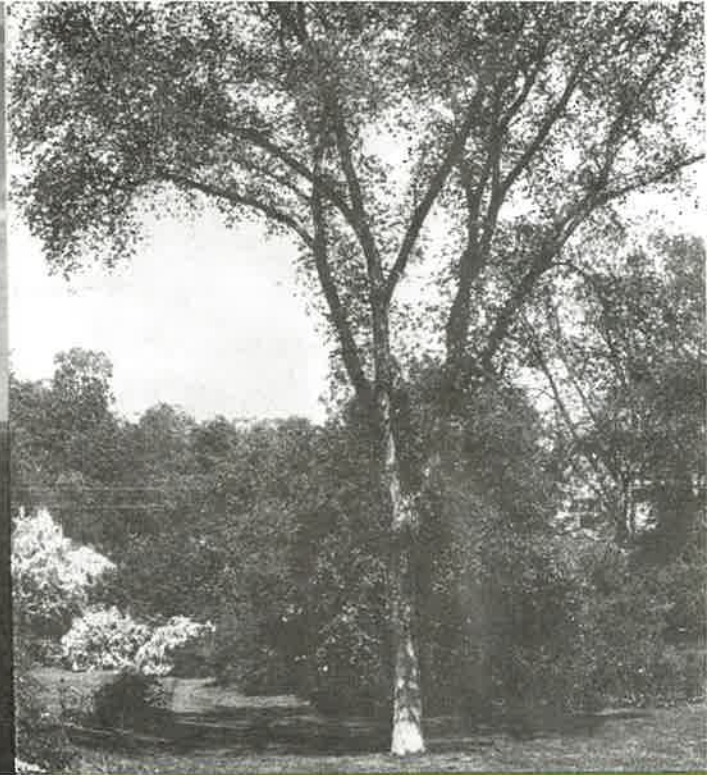




Otter Cliffs motor road
Acadia National Park



Cover:
Historic view of the Fairsted elm
Photo courtesy the Olmsted NHS archives

PARTNERS

The Olmsted Center works in collaboration with partners from the National Park Service, universities, and non-profit organizations including:

Frederick Law Olmsted National Historic Site
Boston and Philadelphia Support Offices, Northeast
Region, National Park Service
Adams National Historical Park
Fort McHenry National Monument/Hampton
National Historic Site
Statue of Liberty National Monument
Weir Farm National Historic Site
The Garden Conservancy
Society for the Preservation of New England
Antiquities
State University of New York, Syracuse
University of Massachusetts
University of Virginia

FOR MORE INFORMATION, PLEASE CONTACT

OLMSTED CENTER for LANDSCAPE PRESERVATION
NATIONAL PARK SERVICE, NORTHEAST REGION
99 Warren Street
Brookline, MA 02445

Phone: 617.566.1689
Fax: 617.232.3964
Email: olmsted_center@nps.gov
Web: www.nps.gov/frla/oclp.htm

OLMSTED
CENTER
for LANDSCAPE PRESERVATION



WORKING IN
PARTNERSHIP FOR
PRESERVATION

(2000)

Mission



The Olmsted Center for Landscape Preservation strengthens the capacity of parks to manage cultural landscapes as part of our national heritage. The Olmsted Center provides a full range of technical assistance to historic properties in cultural landscape research, planning, stewardship, and education. As the only National Park Service center for cultural landscape preservation, training, and technology development, Olmsted Center staff works in partnership with national parks, universities, government agencies, and private non-profit organizations. Based at the Frederick Law Olmsted National Historic Site, the Olmsted Center perpetuates the traditions of the Olmsted offices and Frederick Law Olmsted Sr.'s lifelong commitment to people, parks and public spaces.

Frederick Law Olmsted
National Historic Site, circa 1903
Photo courtesy the Olmsted NHIS archives

TECHNICAL ASSISTANCE

As part of the National Park Service mission to provide technical assistance to historic property managers, the Olmsted Center staff apply expertise in horticulture, landscape architecture, and history to the preservation of cultural landscapes.

RESEARCH

- Cultural Landscapes Inventory
- Historic Plant Inventory
- National Register of Historic Places documentation
- Cultural Landscape Reports, Part 1: Site History, Existing Conditions, and Analysis and Evaluation

PLANNING

- Treatment alternatives and guidelines
- Cultural Landscape Reports, Part 2: Treatment
- Preservation Maintenance Plans
- Pre-construction planning and impact assessment

STEWARDSHIP

- Condition assessments
- Cyclic preservation maintenance
- Resource protection
- Emergency stabilization

EDUCATION

- Historic landscape maintenance workshops
- Preservation maintenance skills training
- Gardener Intake Program
- Arborist Training Program
- Cultural Landscape Publication Series
- Technical Information Series



Trail preservation work at Weir Farm
National Historic Site

PROJECT WORK

Every Olmsted Center project involves a close collaboration with site staff to incorporate their knowledge of the resources and strengthen their capacity to preserve the cultural landscape. Sample projects include:

Cultural Landscapes Inventory for Liberty Island,
Statue of Liberty National Monument

Cultural Landscape Report for Independence
Square, Independence National Historical Park

Historic Plant Inventory for Vanderbilt Mansion
National Historic Site

Rehabilitation Guidelines for the Historic Motor
Roads, Acadia National Park

Preservation Maintenance Plan for Dumbarton
Oaks Park, Rock Creek Park

2000 WORK PLAN

RESEARCH

Cultural Landscapes Inventory

- Acadia National Park
- Ellis Island National Monument
- Morristown National Historical Park
- Saratoga National Historical Park

Cultural Landscape Reports

- Booker T. Washington National Historic Site in collaboration with the University of Virginia
- Boston National Historical Park, Bunker Hill
- Eisenhower National Historic Site
- Frederick Law Olmsted National Historic Site, Volume IV: Record of Treatment
- Gettysburg National Military Park, Codori-Trostle Thicket Battle Action in collaboration with the Society for the Preservation of New England Antiquities
- Morristown National Historical Park
- Petersburg National Battlefield in collaboration with the University of Virginia
- Saratoga National Historical Park in collaboration with the State University of New York, College of Environmental Science & Forestry

National Register Nominations

- Acadia National Park, Phase 2: Historic Trails in collaboration with the New England Region, Boston Support Office History Program

PLANNING

Cultural Landscape Report Volume 2: Treatment Plan

- Gettysburg National Military Park, Codori-Trostle Thicket Battle Action in collaboration with the Society for the Preservation of New England Antiquities
- Home of Franklin D. Roosevelt National Historic Site, Visitor & Education Center Development Zone

- Wright-Patterson Air Force Base, Huffman Prairie Flying Field with National Park Service Midwest Region Cultural Landscapes Program, Dayton Aviation Heritage National Historical Park and Wright-Patterson Air Force Base

Orchard Management Plan

- Hopewell Furnace National Historic Site in collaboration with the University of Massachusetts
- Morristown National Historical Park in collaboration with the University of Massachusetts

STEWARDSHIP

Critical Orchard Maintenance

- Morristown National Historical Park
- Salem Maritime National Historic Site
- Weir Farm National Historic Site

Hazardous Tree Stabilization

- Gettysburg National Military Park
- Independence National Historical Park

Historic Trails Preservation

- Acadia National Park
- Weir Farm National Historic Site

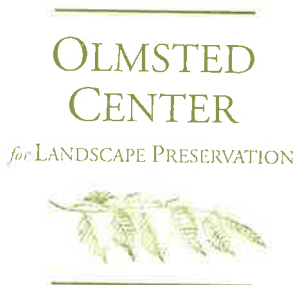
Propagate Historic Plants

(With the Society for the Preservation of New England Antiquities and the Arnold Arboretum of Harvard)

- Adams National Historical Park
- Delaware Water Gap National Recreation Area
- Edison National Historic Site
- George Washington Birthplace National Monument
- Saint-Gaudens National Historic Site

Specimen Tree Stabilization

- Gateway National Recreation Area,
- Hopewell Furnace National Historic Site
- Saugus Ironworks National Historic Site
- Statue of Liberty National Monument



1999 ACCOMPLISHMENTS

RESEARCH

Cultural Landscapes Inventory

- Cape Cod National Seashore
- Fort Stanwix National Monument
- Marsh-Billings-Rockefeller National Historical Park
- Statue of Liberty National Monument
- Women's Rights National Historical Park
- Home of Franklin D. Roosevelt National Historic Site - Bellefield

Cultural Landscape Reports

- Boston Harbor Islands National Park Area
- Cape Cod National Seashore, CLR and Historic Structure Report, Salt Pond Visitor Center with the North East Region, Building Conservation Branch
- Gateway National Recreation Area, Proving Ground and Wartime Expansion Areas: Fort Hancock
- Home of Franklin D. Roosevelt National Historic Site with the State University of New York, College of Environmental Science & Forestry

Historic Resource Study

- Boston National Historical Park with the North East Museum Services Center

Historic Structures Report

- Vanderbilt Mansion National Historic Site in collaboration with the North East Museum Services Center

National Register Nominations

- Acadia National Park Phase 2: Historic Motor Road System, Blackwoods Campground and Seawall Campground with the North East Region, Boston Support Office History Program

PLANNING

Cultural Landscape Report Volume 2: Treatment Plan

- Longfellow National Historic Site
- Wright-Patterson Air Force Base with the National Park Service Midwest Region Cultural Landscapes Program, Dayton Aviation Heritage National Historical Park and Wright-Patterson Air Force Base

Integrated Pest Management Plan

- Roger Williams National Memorial

Landscape Stabilization Plan

- Saint Paul's Church National Historic Site with the Statue of Liberty National Monument/Ellis Island

Preservation Maintenance Plan

- Sagamore Hill National Historic Site
- Weir Farm National Historic Site

STEWARDSHIP

Critical Orchard Maintenance

- Gettysburg National Military Park
- Hopewell Furnace National Historic Site
- Roosevelt-Vanderbilt National Historic Site
- Delaware Water Gap National Recreation Area

Stabilize Hazardous Trees

- Edison National Historic Site

Rehabilitate Hemlock Hedge

- Marsh-Billings-Rockefeller National Historical Park

Propagate Historic Plants

- With the Society for the Preservation of New England Antiquities and the Arnold Arboretum of Harvard University
- Adams National Historical Park
 - Delaware Water Gap National Recreation Area

(continued on reverse side)

OLMSTED
CENTER

for LANDSCAPE PRESERVATION



Propagate Historic Plants, continued

- Edison National Historic Site
- George Washington Birthplace National Monument
- Hampton National Historic Site
- Longfellow National Historic Site
- Martin Van Buren National Historic Site
- Petersburg National Battlefield
- Saint-Gaudens National Historic Site
- Sagamore Hill National Historic Site
- Weir Farm National Historic Site

EDUCATION

Publications

- *Guide to Inventorying Historic Plants* with the Arnold Arboretum of Harvard University

Workshops

- Arborist Training Program
- Discovering the Cultural Landscapes of Coastal Communities with the Preservation Institute: Nantucket, Nantucket, MA
- Letter of Participation, Historic Landscape Preservation with the Arnold Arboretum of Harvard University, Jamaica Plain, MA
- National Park Service Roads Conference with the National Park Service Washington Office Cultural Landscapes Program, Glacier National Park, West Glacier, MT
- Advanced Arborist Training Program, West Point Military Academy, West Point, NY
- American Society of Landscape Architects Annual Conference, Boston, MA
- Landscape Preservation for Municipalities with the Massachusetts Department of Environmental Management, Sturbridge, MA