



Theodore Roosevelt Area Hiking Guide & Trail Map

“There’s a lot that’s disappearing (land), but people are waking up to the fact there’s not much left.”

“That’s why I want this place saved. So you can come see God.”

“Pretty soon there will come a day when there will be nothing but a concrete jungle from New York City to Jacksonville.”

- Willie Browne, 1969



“A place in the woods people can go to”

The Theodore Roosevelt Area is a place where people can leave the everyday pressures and stresses of life behind and enter a world where their senses can indulge in the sounds, smells, and sights of “Old Florida.”

The park is a gift given to the people by an insightful man, Willie Browne, who lived his entire life upon this property. Towards the end of his life he became worried that

Jacksonville would become a “concrete jungle” with no wild areas remaining.

People offered Willie millions of dollars to buy his land, but he declined and donated the land (for free) so that future generations would “have a place in the woods to go to.”

Have a Safe and Enjoyable Visit

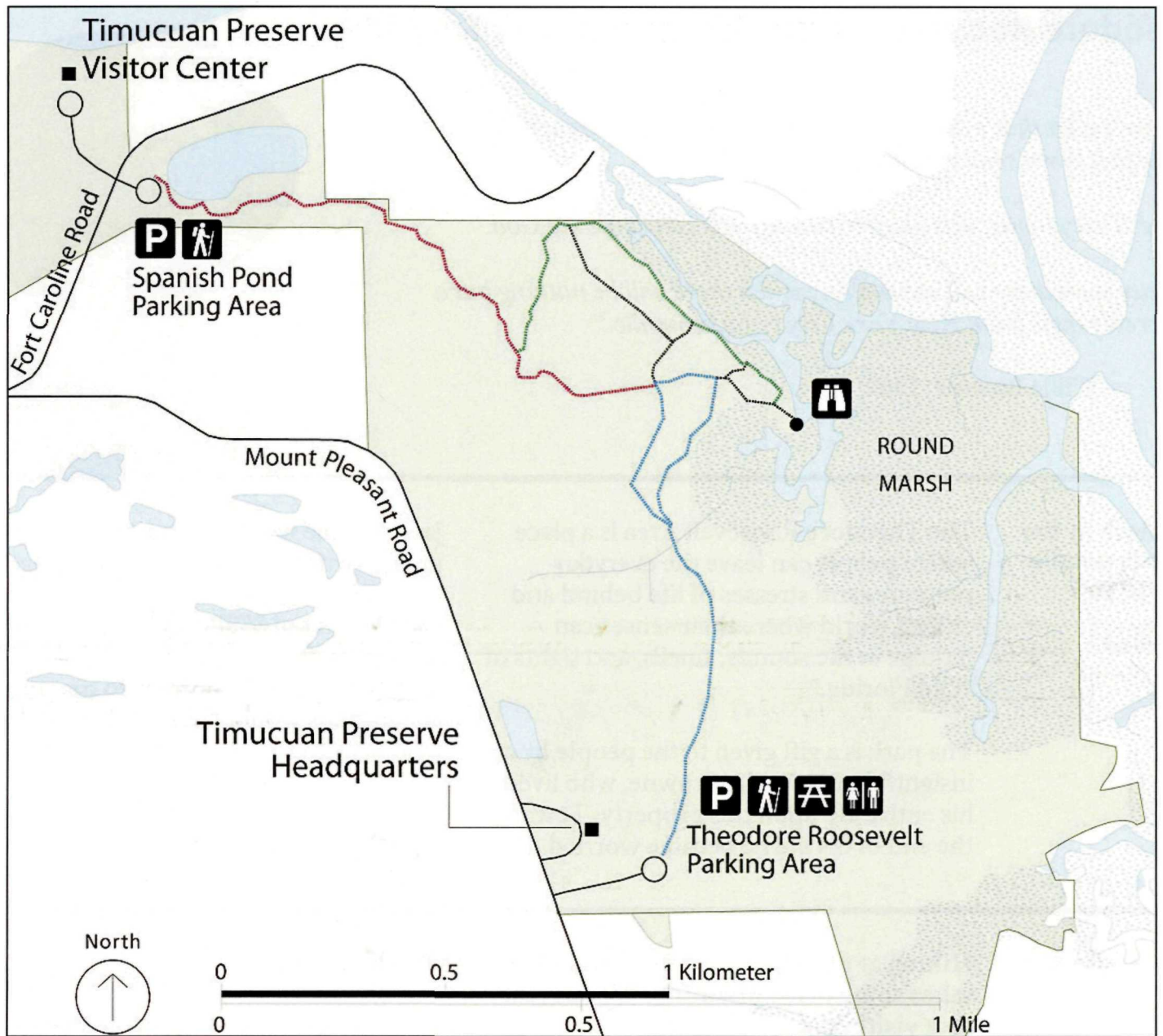
Hiking at the Theodore Roosevelt Area takes some prior planning. We suggest that visitors:

- Carry drinking water,
- Wear sunscreen,
- Apply insect repellent,
- Use a walking stick,
- Take a cell phone to call 911 and park staff in case of emergency at 904-641-7155.

We also ask that:

- Dogs be kept on leashes at all times;
- Hikers stay on marked trails;
- Trash be placed in the garbage can located in the parking lot;
- Visitors report any conditions that could be unsafe.

Theodore Roosevelt Area Hiking Map



Timucuan Preserve (2011) – Fort Caroline National Memorial – 904-641-7155 – <http://www.nps.gov/timu>

EXPERIENCE YOUR AMERICA

The National Park Service cares for special places saved by the American people so that all may experience our heritage.