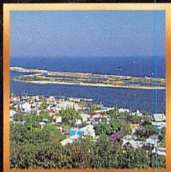


NATIONAL PARKS COLLECTION

GATEWAY

GATEWAY NATIONAL RECREATION AREA

NEW YORK & NEW JERSEY



A natural gateway rises from the New York and New Jersey estuary and leads to one of America's greatest ports and recreational areas. Sandy Hook in New Jersey, Rockaway Peninsula, Staten Island and Jamaica Bay in New York City comprise the Gateway National Recreation Area, a region brimming with beaches, wildlife refuges, picnic groves, scenic trails, historic military forts and structures.

Leisure activities include swimming, boating, biking, fishing, golf, tennis, special events, and touring historic sites. Of special historical interest are three forts, two former airfields and the country's oldest operating lighthouse.

SPECIAL INFORMATION

Swim only in designated areas where lifeguards are present. Be alert to poison ivy. First aid is available in the Recreation Area in summer months. • General Superintendent, Gateway National Recreation Area, Floyd Bennett Field, Brooklyn, NY 11234 (718) 338-3575; Public Affairs Office (718) 338-3688.