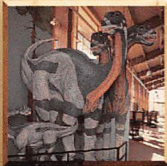




NATIONAL PARKS COLLECTION

DINOSAUR



123

DINOSAUR NATIONAL MONUMENT

COLORADO AND UTAH

Because of the unmatched deposit of Jurassic dinosaur bones, Dinosaur National Monument was created in 1915. This unique collection of over 1600 dinosaur bones are exhibited in their final resting place, an ancient river bed. These bones remind us that extinction is forever.

Elaborate drawings in the form of petroglyphs and pictographs are also preserved within the park.

In 1938 the canyons of the Yampa and Green rivers were added to the original 80 acres. Dinosaur National Monument encompasses an area of 210,000 acres.

SPECIAL INFORMATION

To preserve the natural and cultural heritage within Dinosaur, certain restrictions are enforced. Therefore, collecting any cultural or natural object (arrowheads, rocks, flowers, bugs, etc) is prohibited. Hunting or molesting wildlife is prohibited. Placing your name, date, or other graffiti on cabins and rock faces, or other cultural and natural features is prohibited. • Superintendent, Dinosaur National Monument, 4545 E. Highway 40, Dinosaur, CO 81610-9724, (970) 374-3000.