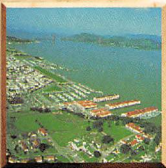




NATIONAL PARKS COLLECTION

GOLDEN GATE



144

**GOLDEN GATE
NATIONAL
RECREATION AREA**
CALIFORNIA

Golden Gate National Recreation Area stretches over 76,000 acres along 28 miles of California's coastline, centered around the Golden Gate Bridge. This National park area includes famous San Francisco destinations like the Cliff House, Sutro Baths, Ocean Beach, the historic Presidio of San Francisco, and Alcatraz Island. Well known areas north of the Golden Gate Bridge include Muir Woods, the Marin Headlands, Olema Valley, and Stinson Beach. The park contains historic lighthouses, shipwrecks, coast defense batteries, redwood trees, rare butterflies, sea lions, pelicans, coastal dunes, tremendous views of the Golden Gate Bridge, San Francisco Bay, San Francisco, and the Pacific Ocean - a mix of California sunshine and coastal fog.

SPECIAL INFORMATION

To plan your visit, call or write for the park brochure and list of park events. • Superintendent, Golden Gate National Recreation Area, Fort Mason, Building 201, San Francisco, CA 94123 (415) 556-0560.