

Broom groundsel - *Senecio spartioides* CD/F
 Goldenrod - *Solidago species* (3) CD/Su-F
 Wire lettuce - *Stephanomeria tenuifolia* All/Sp
 Showy goldeneye - *Viguiera multiflora* RT/Sp-Su

Evening-Primrose Family (Onagraceae)
 Yellow camissonia - *Camissonia multijuga* (6) CDST/Sp
 Tufted evening-primrose - *Oenothera caespitosa* ST/Sp-Su
 Pale evening-primrose - *Oenothera pallida* (7) CDPS/Sp
 Hummingbird flower - *Zauschneria latifolia* CPS/Su-F

Figwort Family (Scrophulariaceae)
 Desert paintbrush - *Castilleja chromosa* CDT/Sp
 Slickrock paintbrush - *Castilleja scabrada* S/Sp
 Cardinal monkeyflower - *Mimulus cardinalis* CHR/Sp, F
 Eaton penstemon - *Penstemon eatonii* CDPT/Sp
 Zion penstemon - *Penstemon humilis* CDPT/Sp
 Fuchsia penstemon - *Penstemon x jonesii* CS/Sp-Su
 Royal/smooth penstemon - *Penstemon laevis* CDPT/Sp
 Palmer's penstemon - *Penstemon palmeri* CDPT/Sp-Su
 Utah penstemon - *Penstemon utahensis* CPST/Sp
 Common mullein* - *Verbascum thapsus* CPR/Su

Flax Family (Linaceae)
 Blue flax - *Linum perenne var. lewisii* CDPT/Su

Four-O'Clock Family (Nyctaginaceae)
 Fragrant sand-verbena - *Abronia fragrans* CDST/Sp, F
 Showy four-o'clock - *Mirabilis multiflora* CDT/Sp-Su

Gentian Family (Gentianaceae)
 Elkweed - *Swertia radiata* (2) P/Sp

Geranium Family (Geraniaceae)
 Filaree/storksbill* - *Erodium cicutarium* CS/Sp-F

Goosefoot Family (Chenopodiaceae)
 Russian thistle* - *Salsola kali* CD/Su



Sego lily (*Calochortus nuttallii*)

Gourd Family (Cucurbitaceae)
 Stinking gourd - *Cucurbita foetidissima* CDT/Su

Lily Family (Liliaceae)
 Wild onion - *Allium species* (3) CP/Sp
 Mariposa lily - *Calochortus species* (3) CDPT/Sp
 Segoe lily - *Calochortus nuttallii* CPT/Sp
 Blue dicks - *Dichelostemma pulchellum* CPST/Sp
 False solomon-seal - *Smilacina stellata* CHR/Sp

Madder Family (Rubiaceae)
 Bedstraw - *Galium species* (6) C/Sp-Su
 Madder* - *Rubia tinctoria* C/Sp-Su

Mallow Family (Malvaceae)
 Globemallow - *Sphaeralcea grossularifolia* (4) CDPST/Sp

Milkweed Family (Asclepiadaceae)
 Spider milkweed - *Asclepias asperula* CD/Sp-Su
 Butterfly weed - *Asclepias tuberosa* CD/Sp-Su

Mustard Family (Brassicaceae)
 Rockcress - *Arabis species* (5) CPT/Sp
 Zion draba - *Draba asprella var. zionensis* CPS/Sp
 Wallflower - *Erysimum asperum* CDPT/Sp
 Watercress* - *Nasturtium officinale* HR/Sp
 Twinpod - *Physaria species* (8) PT/Sp
 Prince's plume - *Stanleya pinnata* CDT/Sp

Orchid Family (Orchidaceae)
 Helleborine - *Epipactis gigantea* CHRS/Sp

Pea Family (Fabaceae)
 Stinking milkvetch - *Astragalus praelongus* CDT/Sp
 Zion milkvetch - *Astragalus zionis* (20) CDT/Sp
 Prairie clover - *Dalea searlsiae* D/Sp
 Zion sweetpea - *Lathyrus zionis* CDT/Sp
 Utah deerlover/trefoil - *Lotus utahensis* (4) CDS/Sp
 Elegant lupine - *Lupinus concinnus* (8) DPT/Sp
 Thompson peteria - *Peteria thompsonae* CDP/Sp-Su
 Lean clover - *Trifolium macilentum* (3) CHP/Sp
 Goldenpea - *Thermopsis pinetorum* P/Sp
 American vetch - *Vicia americana* CT/Sp

Phlox Family (Polemoniaceae)
 Scarlet gilia - *Ipomopsis aggregata* (5) PT/Sp
 Nuttall gilia - *Linanthastrum nuttallii* CS/Sp
 Desert/Jones' phlox - *Phlox austromontana* CS/Sp
 Long-leaf phlox - *Phlox longifolia* P/Sp

Pink Family (Caryophyllaceae)
 Sandwort - *Arenaria species* (6) DHPS/Sp-Su
 Common chickweed - *Stellaria media* CDPST/Sp

Poppy Family (Papaveraceae)
 Prickly/thistle poppy - *Argemone munita* (2) CPS/Su

Potato Family (Solanaceae)
 Angel's trumpet - *Datura wrightii* CDT/Sp-F
 Silverleaf nightshade - *Solanum elaeagnifolium* CD/Sp-Su

Primrose Family (Primulaceae)
 Zion shooting star - *Dodecatheon pulchellum var. zionense* HR/Sp

Purslane Family (Portulacaceae)
 Lanceleaf spring beauty - *Claytonia lanceolata* H/Sp
 Southwestern bitterroot - *Lewisia brachycalyx* P/Sp
 Miners/Indian lettuce - *Montia perfoliata* HR/Sp

Rose Family (Rosaceae)
 Rock spiraea - *Petrophytum caespitosum* S/F
 Cinquefoil - *Potentilla species* (3) P/Sp-Su

Saxifrage Family (Saxifragaceae)
 Hairy alumroot - *Heuchera rubescens* CHS/Su
 Woodland star - *Lithophragma tenella* P/Sp

Spiderwort Family (Commelinaceae)
 Spiderwort - *Tradescantia occidentalis* CPT/Sp

Spurge Family (Euphorbiaceae)
 Whitemargin spurge - *Chamaesyce albomarginata* CDT/Sp

Waterleaf Family (Hydrophyllaceae)
 Wand phacelia - *Phacelia heterophylla* (10) CDP/Su

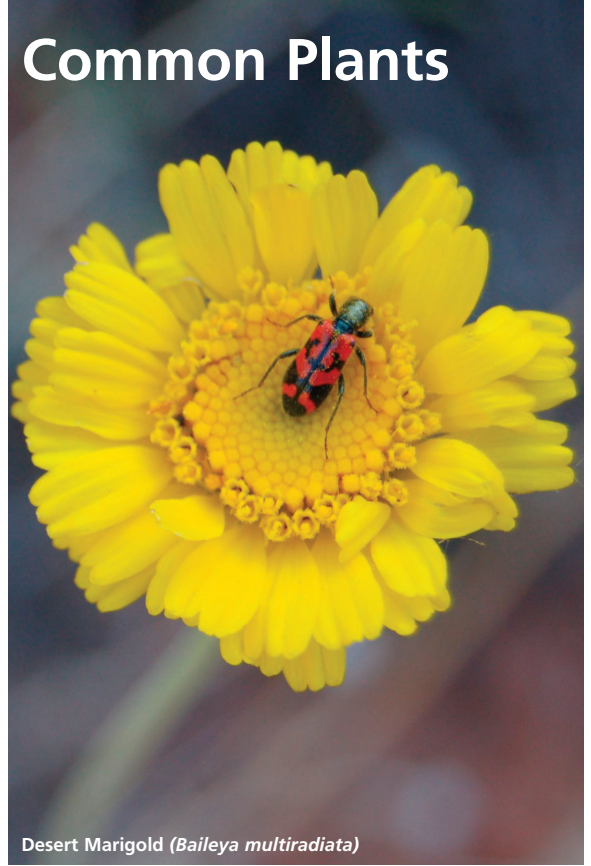
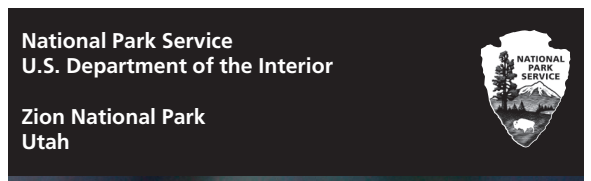
Ferns & Fern Allies
Fern Family (Polypodiaceae)
 Maidenhair fern - *Adiantum capillus* (19) HR/N

Scouring Rush Family (Equisetaceae)
 Common Horsetail - *Equisetum arvense* (2) HR/N

Grasses & Grass-like Plants
Grass Family (Poaceae)
 Purple three-awn - *Aristida purpurea* CT/Sp-Su
 Cane bluestem - *Bothriochloa barbimodis* CT/Su-F
 Blue grama - *Bouteloua gracilis* CT/Su-F
 Rippgut brome* - *Bromus diandrus* CD/Sp
 Cheatgrass* - *Bromus tectorum* CD/Sp
 Squirreltail - *Elymus elymoides* CDP/Sp
 Mutton grass - *Poa fendleriana* CDP/Sp
 Needle-and-thread grass - *Stipa comata* CD/Sp
 Indian ricegrass - *Stipa hymenoides* CDST/Sp
 Desert needlegrass - *Stipa speciosa* DT/Su

Rush Family (Juncaceae)
 Swordleaf rush - *Juncus xiphioides* HR/Sp

Sedge Family (Cyperaceae)
 Ovalhead sedge - *Carex festivella* HR/Sp-Su
 Panicked bulrush - *Scirpus microcarpus* HR/Sp-Su



Desert Marigold (*Baileya multiradiata*)

Zion National Park is located at the confluence of three distinct ecological regions: the Colorado Plateau, the Mojave Desert, and the Great Basin. This unique location, along with Zion's dramatic landscape and the prevalence of water, creates an ideal habitat for a wide variety of plants. In all, Zion is home to over 1,000 species of plants. This list provides a glimpse of the incredible biodiversity that can be found in the park.

The following abbreviations are used to describe where and when certain plants may be found in Zion National Park.

Location

- C = Canyons
- D = Desert, lower washes, and sandy areas
- H = Hanging gardens and seeps
- P = Plateau
- R = Riparian
- S = Slickrock and cliffs
- T = Talus slopes

Blooming Season

- Sp = Spring
- Su = Summer
- F = Fall
- W = Winter
- N = No flower

* Introduced Species (non-native)

Trees

Birch Family (Betulaceae)	
Water/River birch - <i>Betula occidentalis</i>	CR/Sp
Elm Family (Ulmaceae)	
Netleaf hackberry - <i>Celtis reticulata</i>	CT/Sp
Juniper or Cypress Family (Cupressaceae)	
Arizona cypress* - <i>Cupressaceae glabra</i>	C/N
Utah juniper - <i>Juniperus osteosperma</i>	DPST/N
Rocky Mountain juniper - <i>Juniperus scopulorum</i>	PRT/N
Maple Family (Aceraceae)	
Bigtooth maple - <i>Acer grandidentatum</i>	CPS/Sp
Boxelder - <i>Acer negundo</i>	CRS/Sp
Oak Family (Fagaceae)	
Gambel oak - <i>Quercus gambelii</i>	CPST/Sp
Shrub live oak - <i>Quercus turbinella</i>	CDST/Sp
Wavyleaf oak - <i>Quercus undulata</i>	CP/Sp
Olive Family (Oleaceae)	
Singleleaf ash - <i>Fraxinus anomala</i>	CST/Sp
Velvet ash - <i>Fraxinus velutina</i>	CR/Sp
Pea Family (Fabaceae)	
New Mexico locust - <i>Robinia neomexicana</i>	C/Sp
Black locust* - <i>Robinia pseudoacacia</i>	C/Sp



Zion shooting star (*Dodecotheon pulchellum var. zionense*)

Pine Family (Pinaceae)	
White fir - <i>Abies concolor</i>	CP/N
Piñon/nut pine - <i>Pinus edulis</i>	CPST/N
Singleleaf pinyon - <i>Pinus monophylla</i>	CPST/N
Ponderosa pine - <i>Pinus ponderosa</i>	SP/N
Douglas fir - <i>Pseudotsuga menziesii</i>	CSP/N
Rose Family (Rosaceae)	
Apple tree* - <i>Malus pumila</i>	C/Sp
Tamarix Family (Tamaricaceae)	
Tamarisk or Saltcedar* - <i>Tamarix pentandra</i>	CR/Sp-F
Willow Family (Salicaceae)	
Fremont cottonwood - <i>Populus fremontii</i>	CRS/Sp
Quaking aspen - <i>Populus tremuloides</i>	PS/Sp
Willow - <i>Salix species</i> (9)	CR/Sp
Shrubs	
Agave Family (Agavaceae)	
Narrow-leaved yucca - <i>Yucca angustissima</i>	CDPST/Sp
Datil yucca - <i>Yucca baccata</i>	CDT/Sp
Utah yucca - <i>Yucca utahensis</i>	CDPST/Sp
Barberry Family (Berberidaceae)	
Creeping hollygrape - <i>Berberis repens</i>	CP/Sp
Cashew/Sumac Family (Anacardiaceae)	
Smooth sumac - <i>Rhus glabra</i>	CDT/Sp
Poison ivy - <i>Rhus radicans</i>	CHR/Sp-Su
Squawbush/three-leaf sumac - <i>Rhus trilobata</i>	CDT/Sp
Composite Family (Asteraceae)	
Old man sagebrush - <i>Artemisia filifolia</i>	CDT/Sp, F
Big sagebrush - <i>Artemisia tridentata</i>	CDP/F
Waterwillow - <i>Baccharis emoryi</i>	CR/F
Rabbitbrush - <i>Chrysothamnus species</i> (13)	CD/F
Broom Snakeweed - <i>Gutierrezia sarothrae</i>	CDT/F
Bush encelia - <i>Encelia frutescens virginensis</i>	DT/Su

Dogwood Family (Cornaceae)	
Red-osier dogwood - <i>Cornus stolonifera</i>	P/Sp
Goosefoot Family (Chenopodiaceae)	
Four-wing saltbush - <i>Atriplex canescens</i>	CD/Su
Shadscale - <i>Atriplex confertifolia</i>	DT/Sp
Grape Family (Vitaceae)	
Canyon wild grape - <i>Vitis arizonica</i>	CR/Sp
Heath Family (Ericaceae)	
Manzanita - <i>Arctostaphylos species</i> (2)	PST/W-Sp
Honeysuckle Family (Caprifoliaceae)	
Elderberry - <i>Sambucus caerulea</i>	P/Su
Mountain snowberry - <i>Symphoricarpos oreophilus</i>	CP/Sp-Su
Joint Fir Family (Ephedraceae)	
Indian/Mormon tea - <i>Ephedra viridis</i>	CDT/Sp
Mint Family (Lamiaceae)	
Dorr's sage - <i>Salvia dorrii</i>	CDT/Sp
Oleaster Family (Elaeagnaceae)	
Russian olive* - <i>Elaeagnus angustifolia</i>	CR/Sp
Roundleaf buffaloberry - <i>Shepherdia rotundifolia</i>	DT/W-Sp
Pea Family (Fabaceae)	
Indigobush/Desert beauty - <i>Dalea fremontii</i>	DT/Sp
Potato Family (Solanaceae)	
Wolfberry/Tomatilla - <i>Lycium pallidum</i>	CD/Sp
Rose Family (Rosaceae)	
Saskatoon serviceberry - <i>Amelanchier alnifolia</i>	CP/Sp
Utah serviceberry - <i>Amelanchier utahensis</i>	CPT/Sp
Mountain mahogany - <i>Cercocarpus species</i> (3)	S/Sp
Blackbrush - <i>Coleogyne ramosissimum</i>	CD/Sp
Western chokecherry - <i>Prunus virginiana</i>	P/Sp
Cliffrose - <i>Purshia mexicana</i>	CDST/Sp
Antelope bitterbrush - <i>Purshia tridentata</i>	CPT/Sp
Wood's wild rose - <i>Rosa woodsii</i>	CPR/Su
Silk-Tassel Family (Garryaceae)	
Silk-tassel bush - <i>Garrya flavescens</i>	C/W
Cacti	
Cactus Family (Cactaceae)	
Purple torch - <i>Echinocereus engelmannii</i>	CD/Sp
Claret cup - <i>Echinocereus triglochidiatus</i>	DST/Sp
Pancake pricklypear - <i>Opuntia chlorotica</i>	CDT/Sp-Su
Common pricklypear - <i>Opuntia erinacea</i>	CDT/Sp-Su
Twist-spine pricklypear - <i>Opuntia macrorhiza</i>	CDT/Sp-Su
Large pricklypear - <i>Opuntia phaeacantha</i>	CDT/Sp-Su
Cholla - <i>Opuntia species</i> (3)	CD/Su

Herbs	
Bellflower Family (Campanulaceae)	
Cardinal-flower - <i>Lobelia cardinalis</i>	CHR/Su-F
Borage Family (Boraginaceae)	
Yellow cryptanth - <i>Cryptantha confertiflora</i> (11)	CT/Sp
Stickseed - <i>Hackelia species</i> (4)	DRT/Sp
Buckwheat Family (Polygonaceae)	
Wild buckwheat - <i>Eriogonum species</i> (20)	DPST/Su-F
Desert trumpet - <i>Eriogonum inflatum</i>	D/Sp-F
Knotweed - <i>Polygonum species</i> (5)	DPRT/Sp
Canaiigre/wild rhubarb - <i>Rumex hymenosepalus</i>	CD/Sp
Buttercup Family (Ranunculaceae)	
Golden columbine - <i>Aquilegia chrysantha</i>	CHR/Sp-Su
Larkspur - <i>Delphinium species</i> (3)	CDPS/Sp
Buttercup - <i>Ranunculus species</i> (6)	S/Sp
Caltrop Family (Zygophyllaceae)	
Puncturevine* - <i>Tribulus terrestris</i>	DT/Su
Caper Family (Capparidaceae)	
Yellow beeplant - <i>Cleome lutea</i>	DS/Su-F
Composite Family (Asteraceae)	
Yarrow - <i>Achillea millefolium</i>	CP/Su
Mountain dandelion - <i>Agoseris species</i> (3)	P/Sp
Desert marigold - <i>Baileya multiradiata</i>	DT/Sp-F
Arrowleaf balsamroot - <i>Balsamorhiza sagittata</i>	P/Sp
Dusty-maiden - <i>Chaenactis douglasii</i>	P/Sp
Arizona thistle - <i>Cirsium arizonicum</i>	CDT/Sp-Su
Spreading daisy - <i>Erigeron divergens</i> (9)	CDPRT/Sp
Zion daisy - <i>Erigeron sionis</i>	H/Sp-Su
Hopi blanketflower - <i>Gaillardia pinnatifida</i>	DT/Sp-Su
Common sunflower - <i>Helianthus annuus</i>	CDST/Su
Hairy goldenaster - <i>Heterotheca villosa</i>	DPT/Su-F
Tansy-aster - <i>Machaeranthera species</i> (3)	CD/Su-F
Basin groundsel - <i>Senecio multilobatus</i>	DT/Sp



Sacred datura (*Datura wrightii*)