

COURIER

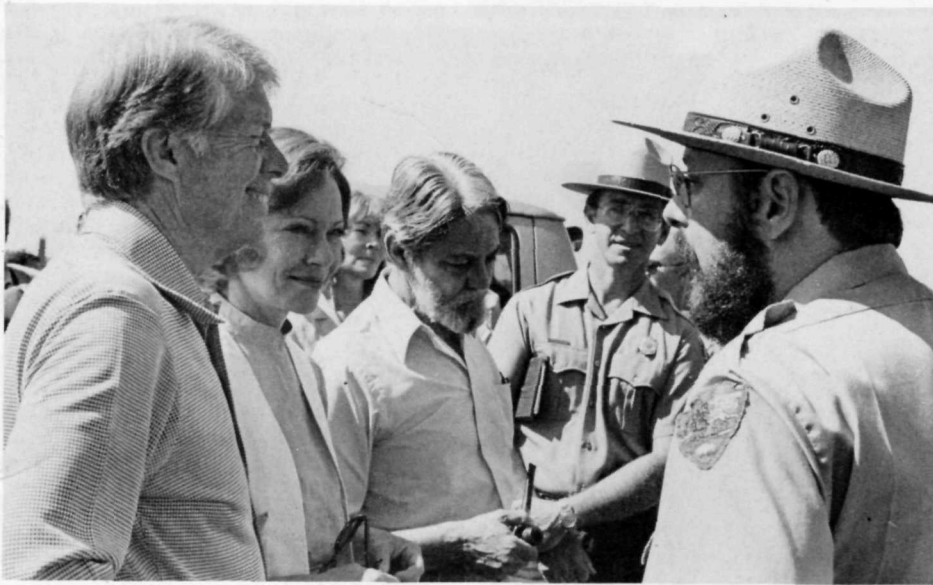
The National Park Service Newsletter

Vol. 1, No. 9

July 1978

President Carter visits national parks

By Arthur Miller
Public Affairs Officer, MARO



(Left to right) President Carter, Mrs. Rosalynn Carter, historian Shelby Foote, superintendent John R. Earnst and park interpreter Robert Prosperi at Gettysburg NMP, Pa.



Park Ranger Mrs. Betty Otto with President Carter at Antietam NBS, Md.

Like many another American enjoying his vacation, President Jimmy Carter took a national park holiday in early July.

He chose as the first three national parks he has visited as President, three Civil War-era parks within easy driving distance of his vacation headquarters at Camp David. They were Gettysburg National Military Park, Pa., Antietam National Battlefield Site, Md., and Harpers Ferry National Historical Park, W. Va.

Park interpreters found the President ready with plenty of questions. A student of the Civil War for many years, he had spent the previous evening at Camp David with historian Shelby Foote, author of a three-volume work on the war.

"He not only knew the outline of the battle, he knew a lot of the specifics," said Robert Prosperi, the interpreter who accompanied Carter around Gettysburg. "For example, he asked the exact location where Confederate General Ambrose Ransom Wright broke through the middle of the Union line on the second day. He really kept me on my toes."

Accompanied by Superintendent John R. Earnst, President Carter climbed the tower on Culp's Hill to view the scene of the first-day's battle, gaze over the flat terrain where General George Pickett led the murderous charge to the Bloody Angle, climbed on a rock to get a good view from Little Round Top and looked across the field from General Robert E. Lee's headquarters site to get the Confederate point of view.

The President made his tour of the battlefield 115 years almost to the day after the battle.

"It was sobering," he said. "It's the tragedy of all wars; so many men died here—and knew they would die."

As the motor caravan made its way, park visitors soon caught on as the White House press corps followed the President from site to site. "We were at the White House the other day," said one family from Illinois, laughing. "But we had to come to Gettysburg to see the President."

President Carter was accompanied on his trip through history by his wife, Rosalynn; her mother, Allie Smith; and son and daughter-in-law, Jeff and Annette Carter.

After a 2½-hour tour of the battlefield, President Carter paid a courtesy call on Mrs. Dwight D. Eisenhower, widow of the former President, whose farm is situated just a few hundred yards from the Gettysburg Battlefield. The late President willed the farm to the National Park Service for future use.

From Gettysburg, the party drove to Antietam, then to Harpers Ferry before returning late in the evening to Camp David.

Lowell now national historical park

President Carter signed legislation June 5 to create a new national historical park in the heart of the industrial city of Lowell, Mass., north of Boston.

The law establishes Lowell National Historical Park and the Lowell Historic Preservation District on adjacent lands. The Interior Secretary is authorized to receive appropriations of \$18.5 million for acquisition and development of the park and emergency assistance for preservation of historic property. In addition, up to \$21.5 million may be ear-marked for transportation, educational and cultural programs.

Lowell, Mass., is significant to this country's history as the first great industrial city, founded in 1822. The city's developers brought together some of the most advanced ideas of the day in power generation, industrial and transportation technology and organization.

Lowell transformed the textile industry because for the first time it perfected the system of making finished products from raw materials at one location. The majority of the early workforce was made up of young women from all over New England, attracted by the chance to get off the farm and earn (for then) good wages. They lived

in carefully chaperoned boarding houses, prayed at mandatory church services, and attended lectures, classes and debates after the work day ended.

After 1850, immigrants of many nationalities flooded the city. By 1900, 20 percent of the city's inhabitants were foreign born.

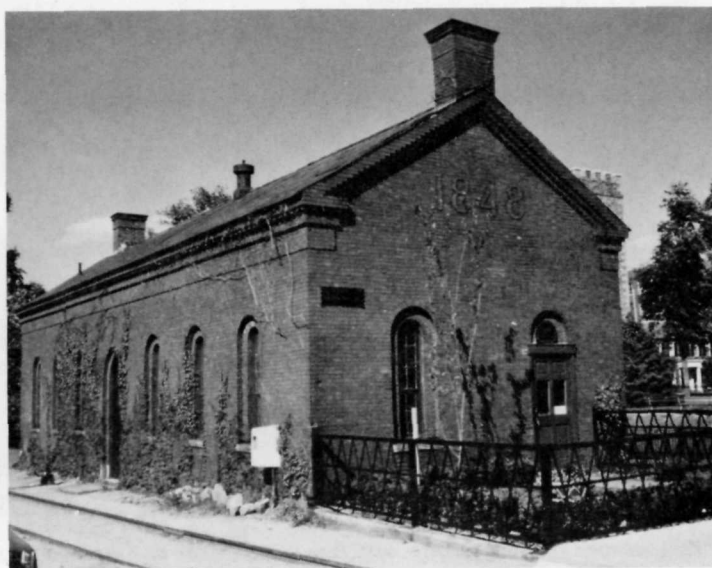
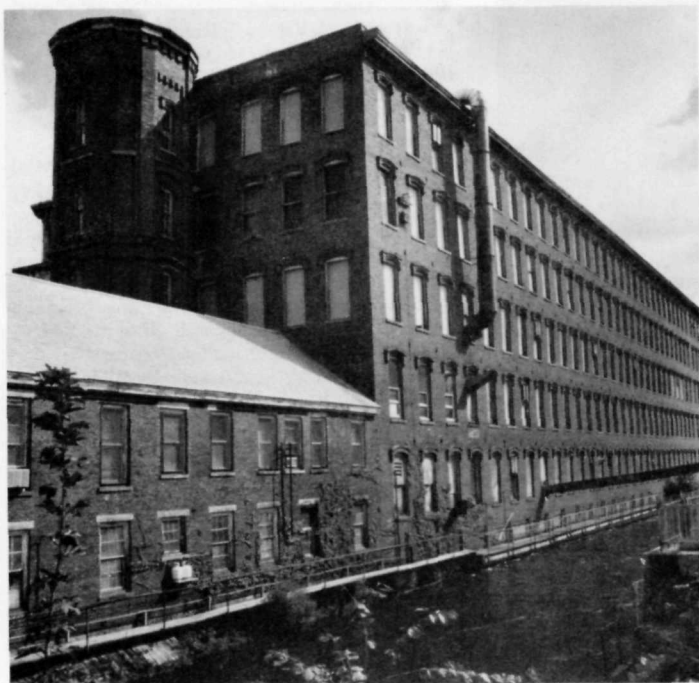
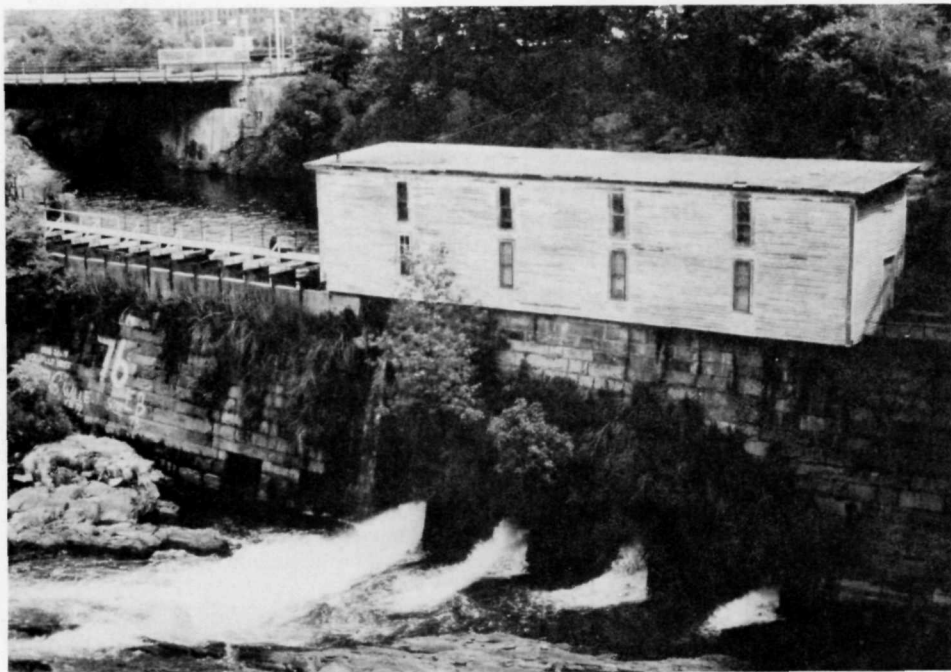
Local preservation efforts began 12 years ago when a Model Cities community group set objectives aimed at revitalizing the city through rediscovery of its heritage. Private, city and State development projects have reached a total of \$50 million. Since 1975, the city has spent more than \$12 million for projects supportive of the historical park and the Commonwealth of Massachusetts has contributed \$10 million toward the development of Lowell Heritage State Park, a project to preserve and develop the recreational possibilities of Lowell's canal system and riverbanks.

The national historical park will consist of a portion of the Lowell Manufacturing Company on Market Street to be used as a visitor center. Other properties to be included in the park include the Linus Childs House, the H&H Paper Company (formerly the Boott Mill Boarding House), Old City Hall, Merrimack Gatehouse, the Wannalancit Textile Company, the Jade Pagoda and Solomon's Yard Goods.

June 9, Director Whalen delivered remarks at Lowell, officially ushering the park into the National Park System.

A planning team headed by park planner John Debo is slated to visit the park in August, but the new national historical park will probably not be fully opened to the public until the 1979 visitor season.

(From top, counter-clockwise) The northern canal, completed in 1848, was last portion of canal system built; the Boott Mill on the eastern canal is the location for the future visitor center of Lowell NHP; and the Merrimack Gate House, also dating from 1848.



Whalen floats the Colorado River

Photos by Mgmt. Asst. Roger Giddings

His purpose: to experience first hand the use of motorized vs. oar-controlled rafts.

(Left to right) Canyon Ranger Steve Martin; Chief Ranger Marv Jensen; Bill Whalen; Western Regional Director Howard Chapman; Chief, Office of Legislation, Dick Curry and Superintendent Merle Stitt.



Senator dedicates George Rogers Clark visitor center

At long last, the \$620,000 visitor center at George Rogers Clark National Historic Park, Ind., has been formally dedicated.

Although open to the public since July 4, 1976, the structure had never undergone the ceremonial dedication.

The appropriate occasion arrived during the Memorial Day weekend when the history-minded city of Vincennes celebrated the 199th anniversary of the historic recapture of Vincennes' Fort Sackville by George Rogers Clark with a 2-day "Spirit of Vincennes Rendezvous."

The dedication program, with United States Senator Birch Bayh as principal speaker, was one of several events which drew thousands to the city.

Other speakers included Lt. Gov. Robert D. Orr; Thomas S. Emison, past president of the Indiana Historical Society; William E. Brooks Jr., publisher of the Vincennes *Sun-Commercial*; and Mrs. H. W. Ramsey, past president of the Vincennes Historical & Antiquarian Society.

Deputy Midwest Regional Director Randall R. Pope served as master of ceremonies, and Supt. Robert L. Lagemann, who had supervised all arrangements, delivered the traditional welcome.

In a message delivered by Pope, Director Whalen said "I join with you from this distance in celebrating another milestone in the development of this park. The support we have received

from the people of Vincennes, the Congressional delegation and many others in Indiana, has been outstanding. We are happy to be teamed with this fine community in accenting the historical significance of the area."

Casual visitors to the park may have thought they were back in the 18th century.

More than 200 members of the Northwest Territory Alliance, a living history organization, were encamped on the park grounds alongside the Wabash River. Their tents, costumes, living styles, long rifles and parade ground formations during the dedication program all were characteristic of the Revolutionary War period.

Also providing color were the appropriately outfitted Pennsylvania Artillery Band (actually from Wisconsin) and a Bagpipe Band from Lafayette, Ind.

The visitor center was designed by Architect Dan Hebert of Vincennes, with the Chris Nix Construction Co. of Evansville, Ind., as the contractor.

The building includes museum exhibits and an auditorium where a 23-minute motion picture titled "A Few Men Well Conducted" is regularly shown. The movie, recounting the George Rogers Clark story, was produced by the Harpers Ferry Center and has been critically acclaimed by history buffs in the Vincennes area.



George Rogers Clark Memorial and dedication audience.

Bigger Katmai would protect wildlife

By John Vosburgh
Communications Office, WASO

The Alaska brown bear has much to gain if the proposed Katmai National Park legislation becomes law. Some 300 to 400 square miles of favorite denning territory would be added to the National Park System.

Among the wildlife of the world, few species can match this Alaska grizzly bear, *Ursus arctos*, in size and strength. The largest land carnivore, it towers over most of the mammals of the planet both figuratively—and, except for the elephant and giraffe, literally.

In the proposed park, the Alaska brown bear would live in an almost completely protected ecosystem assuring endless generations of *Ursus arctos*.

An estimated 200 to 300 Alaska brown bears now inhabit the proposed park—a conservative estimate in view of the 232 dens found there. A number of dens have not been discovered, and some dens are believed to contain more than one bear.

The 1.1 million-acre expansion of the national monument—second largest area in the National Park System would provide a wilderness with plenty of room to accommodate visitors without interfering with the bear population.

Fishing and sightseeing are the major attractions of the existing monument and would continue to be in the new national park. Armed with cameras, binoculars and fishing poles, some 9,000 to 12,000 visitors a year fly in from Anchorage, 390 miles to the southwest. The monument listed more than 5,000 overnight stays in 1977.

In its Environmental Impact Statement for the proposed park, the Park Service has left no doubt as to how it would manage both the resident Alaskan brown bear population and the moderate influx of human visitors.

The No. 1 purpose of the proposed park, says NPS, is to protect "the wild lands and life forms . . . by keeping both geologic and biotic processes essentially undisturbed by modern man." And the

No. 2 purpose is:

To provide visitors with opportunities for wilderness-related experiences and to assure that developments and visitor use of the area *do not interfere with a major objective of the park—the preservation of a naturally perpetuated Alaska brown bear population.*

In addition to the denning territory, the expan-



sion will protect two favorite salmon-fishing haunts of the bear—54-mile American Creek and 25 miles of the King Salmon River.

Katmai also has a high population of moose, and many a visitor has occasionally seen wolves and wolverines among the proposed area's 29 species of land mammals. The 137 species of birdlife include migrants from the far corners of the globe as well as such resident species as the bald eagle.

With more than 70 bald eagle nests, Katmai would rival Everglades National Park as one of the prime breeding areas of the national bird in the National Park System.

Many Katmai visitors take advantage of a 3-day, 2-night package tour from Anchorage. Vis-

itors use four concessioner-operated lake camp facilities, including a modern lodge, store, cabins and lavatory at Brooks Camp on Brooks Lake. Recreation includes salmon fishing, views (from a distance) of the bears catching salmon and, in season, red salmon leaping waterfalls.

The site that brought about establishment of Katmai National Monument by Presidential proclamation in 1918, the Valley of the Ten Thousand Smokes, still remains a major attraction. Here occurred one of history's greatest explosions.

On June 5, 1912, Novaruptra and other vents in the valley began disgorging incandescent sand to skyscraper height, covering 53 square miles at an average depth of 100 feet. On June 6, Mount

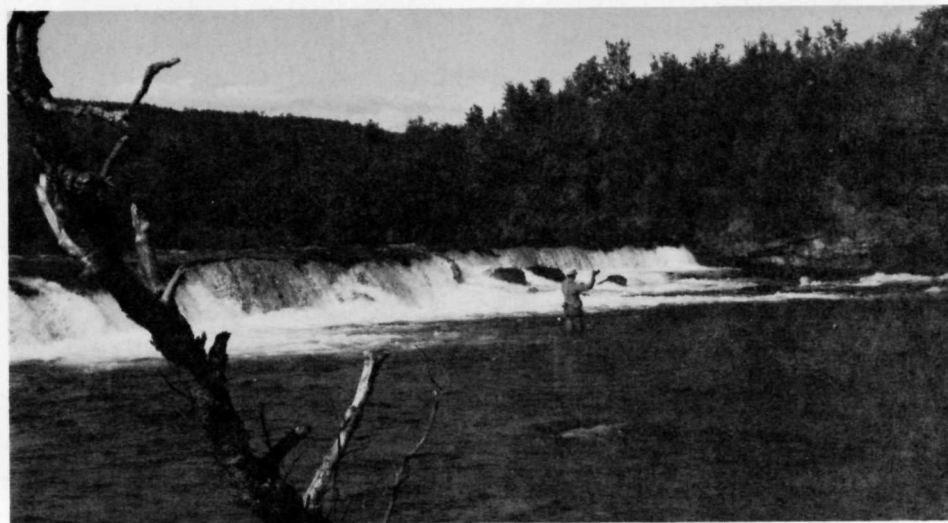
Katmai erupted in a series of explosions that dropped ashes on ships 1,500 miles away, deposited ash 18 inches deep over an area the size of Delaware, rained sulphuric acid on Vancouver, darkened the sun in Madison, Wisc., and cast a haze over Algeria that lasted all summer.

Most of the fumaroles in the Valley of Ten Thousand Smokes have cooled but the visitors can still stand and marvel at the scene where 6 cubic miles of fiery sand, lava, rock and other matter were ejected.

The proposed Katmai expansion has been approved by the House of Representatives and is part of the Alaska legislation now being considered by the Senate Energy and Natural Resources committee.



Wall-to-wall red salmon jam Katmai stream (above). Salmon lure an Alaska brown bear on nearby McNeil River and a fisherman on the Brook River (right). At left, visitors set up camp in Valley of the Ten Thousand Smokes, 1912 volcanic eruption site.



Park Briefs

Boston NHP, Mass.—Daphne Gurney, wife of superintendent Hugh Gurney, smashed a bottle of champagne against the hull of the "Arrowhead" to launch the park's first workboat May 1. The 26-foot boat will assist and dock larger vessels and be used for maintenance work on piers and bulkheads. The superintendent was also accompanied by his daughter, and chief of Maintenance Dave Rose and his staff.

Valley Forge NHP, Pa.—Guided bike tours of the park are now being offered to visitors. An NPS interpreter leads the hikes which follow a 5-mile circuit through the park. The 90-minute tours are offered twice daily on Saturdays and Sundays. Chief of Interpretation Gene Cox says the park has one of the best bike trails in the area.

Stones River NB&C, Tenn.—Rep. Albert Gore, Jr., of Tennessee's 4th Congressional District made the keynote speech during Memorial Day Services held here May 29. During the ceremonies a wreath was laid in memory of all American veterans who gave their lives during all wars from the Revolution to Vietnam. Thousands died here in a New Year's Eve battle during the Civil War in 1862.



Bandelier NM, N. Mex.—The New Mexico Cultural Properties Review Committee has given the Park Service an Historic Preservation Award for "an unprecedented act to save prehistoric archeological ruins from damage" during a forest fire here last year. The honor will be jointly shared by the national monument and the Southwest Region, which supported the fire-fighting effort. Superintendent John Hunter accepted the award for the monument.



Shenandoah NP, Va.—Former Virginia Gov. Mills E. Godwin, Jr. presented the park with a portrait of the late Senator Harry F. Byrd May 20 in the Byrd Visitor Center at Big Meadows. The portrait, by Richmond, Va., artist, David

Silvette, will be permanently displayed in the lobby of the visitor center. Senator Byrd was one of the park's earliest advocates, staunchest supporters and most enthusiastic visitors, said Superintendent Robert R. Jacobsen.



Theodore Roosevelt Birthplace NHS, N.Y.—Park Service Architectural Historian David Kahn conducts one of the Service's most unusual interpretive walks, starting at the historic site on East 20th Street in Manhattan. He tells the secrets of the mighty and not so mighty who inhabited the area around Gramercy Park and Chelsea in its hey-day in the mid-19th century. The tour puts emphasis on period interiors, for example, the rich brocade draperies, the busy wallpapers and the horsehair sofas of the Roosevelt birthplace. The tour ends with a peek at the red-brick Gramercy apartment building, with its mosaics, stained glass, brass hardware, hardwood paneling and composition wall coverings.



Dinosaur NM, Colo.—Scientists have discovered the remains of a dog-sized baby dinosaur, known as stegosaurus. The 140-million-year-old skeleton was found in a riverbed and is only the second of its kind to be discovered in the world. Scientists hope tests on the remains will decide the question of whether dinosaurs were warm-blooded creatures.

Alumni Notes

Mrs. Helen Abbott Fowler.

Dedication of Abbott Memorial Lake

"What a glorious and happy day it was," said many of those who were privileged to attend the dedication of the Abbott Memorial Lake on June 21 at the Peaks of Otter, on the Blue Ridge Parkway in Virginia.

Stan Abbott, designer of the Parkway, which extends through the southern Appalachians, past vistas of quiet natural beauty and rural landscapes, was only 26 years old when he reported for work on the parkway on Dec. 26, 1933. The Bureau of Public Roads had begun a study for a road that would connect Shenandoah National Park Va., along the "blue ridge" of North Carolina, to Great Smoky Mountains National Park, Tenn.

NPS officials decided that young Stan Abbott was the person needed to provide leadership in this unprecedented task—the designing and planning of the Blue Ridge Parkway. Abbott's ideals, imagination, and enthusiasm were assurance that the Parkway would not be simply "just another road."

But Abbott's job required more than ideals, imagination, and enthusiasm. This task demanded patience and cooperation. The 470-mile Blue Ridge Parkway itself is a tribute to Abbott's ability to recognize its potential and to his courage to stick with his convictions. The complexity of the project was nearly enough to keep it from ever getting off the drawing board. But Abbott was one of the Park Service's outstanding career men. He planned on the "grand scale," according to Herb Evison, who interviewed Abbott in 1958 for the *National Park COURIER*. Evison then wrote that Abbott planned on "a Pleiade's canvas with a comet's tail for a brush. He dreamed great dreams, then made them come true."

In that interview some 20 years ago, Abbott said, "We had better be doing something that has creative thinking behind it and applying proper restraint. We had better not have dull, unimaginative people doing it. We had better not take a dull, unimaginative viewpoint ourselves."

(Continued on page 8.)



(From left) Mrs. Elbert Cox, Mr. Charlie Marshall, Cox, and Mrs. Marshall.



Group at dedication ceremony.



Superintendent and Mrs. Gary Everhardt.



"I see a national parkway as one which has as its reasons for existence none other than to reveal the charm and interest of the native American countryside. Having selected a route, you design a road that fits as sympathetically as it can be fitted into that particular piece of topography," said Abbott during the Evison interview.

Superintendent Gary Everhardt, as master of ceremonies on the "glorious and happy day," recognized and extended a special welcome to those members of Stan Abbott's family—his wife, Helen Abbott Fowler; daughters, Elaine Abbott Fuqua and Gale Abbott Roberts; son, Carlton S. Abbott; and grandson Stanley Abbott Roberts, and other members of the family. Then he introduced Jim Tobin, Associate Director of the Park Service, representing Director Bill Whalen; Joe Brown, Southeast Regional Director, who is a former superintendent of the Blue Ridge Parkway, about 60 guests—many of whom were alumni; and members of the dedication committee. They were Chairman Elbert Cox, Sam Weems and Granville Liles—all former superintendents of the Blue Ridge Parkway; Bryce Wagoner, Peaks of Otter Concessioner; Bill O'Neill, former southeast regional engineer and close associate of Stan Abbott; Bob Hope, the present chief of planning and design for the parkway; and Dick Stokes, assistant superintendent of the Parkway.

Everhardt then introduced a long-time friend of the Abbott family, The Reverend Coatsworth Lewis of the Bruton Parish Rectory, Williamsburg, Va., speaker for the occasion.

The Reverend Lewis spoke eloquently of the "essence of his being—this man Stanley W. Abbott." Those present were reminded of Abbott's "great work as a designer of the Blue Ridge Parkway, his eminence as a historian and National Park Service executive, his genius as an outstanding landscape architect and engineer for 40 years, his skill and insight, his gentle spirit, his uplifting smile and his incisive sense of just what was right, how he calmed or stimulated the souls of each of us."

Ending his nostalgic dedication speech, Reverend Lewis said, "How appropriate to dedicate this lake in memory of one whose creativity and smile will be forever reflected in these waters and in our hearts." Gary Everhardt then returned to the podium and invited Stan Abbott's 2-year-old grandson, Stanley Abbott Roberts, to pull the string to unveil the plaque that "will forever remind visitors to this beautiful place of the visionary who made it so."

The plaque reads:

Abbott Lake
Stanley William Abbott
1908 - 1975

The first resident landscape architect and planner of the Blue Ridge Parkway. It was his vision, imagination and creative talents in the Parkway's formative stages that make the Blue Ridge Parkway unique.

After the benediction, Everhardt announced that the guest register, which was kept by Mrs. Pinky Dayton, executive secretary in the assistant superintendent's office, Roanoke, Va., would be given to each guest as a memento of the occasion. Many NPS alumni were present, and perhaps the couple who came the farthest distance was Ray and Rosemary Vinten from St. Augustine, Fla.

Following the dedication a delightful luncheon was served in the Peaks of Otter Lodge.

Holloman retires second time

Bill Hollomon has done it again—retired, that is, for the second time. He first tried it in 1972 by dropping out of NPS when SERO, where he had been Park Planner, was moved from Richmond, Va., to Atlanta, Ga. No sooner had he done that than the Governor of Virginia prevailed on him to serve on the Virginia Council on the Environment. Six and a half years later, as of June 1, he retired once more, and this time he seems to mean it.

The William R. Hollomons (she is Beverly) will keep their stone house and garden at 1705 William Street in Fredericksburg, Va., 22401, but intend to do a lot of traveling. The first stage of this will be a tour of the United States in a new motor home. Along the way Bill will show slides and give talks on the environment, which was his chief concern while working with the Environmental Quality Division of the Virginia Highway Commission, and on ecological and national park related subjects. Bev, in order to join the expedition, has resigned from a dedicated teaching career.

The U.S. tour will be followed by some travel to visit parks in other countries. The couple will go first to England in November, then on to India and beyond.

Bill joined the National Park Service in 1938 as a seasonal park ranger at Lassen Volcanic National Park, Calif., and subsequently served in Sequoia and Kings Canyon. He was Superintendent of Andrew Johnson National Historic Site, Greeneville, Tenn., and Fredericksburg National Military Park, Va. His hobbies range from photography and painting to gardening and landscape design.

NAR women raise funds

The National Park Women of the North Atlantic Region met at Bear Mountain State Park in New York during the spring Superintendents' Conference.

In addition to their business meeting and work sessions, Chairman Pat Binnewies reports that \$261.00 was collected from a raffle of various items donated by several parks in the North Atlantic Region. The money was donated to the NPS Employee and Alumni Education Fund.

Nash Castro, Director of the Interstate Palisades Park Commission and his wife Bette were hosts of the conference. Bette was able to join the women for a delightful luncheon at the Bear Mountain Inn.



Stanley Abbott Roberts, grandson of the late Stanley Abbott.

From Little Big Horn to Rock Creek Park

The site of the Battle of the Little Big Horn River, Mont., has many monuments erected for the individuals who fought and died there with Gen. George A. Custer on June 25, 1876.

Less recognized, however, are the soldiers who fought on the same day in another engagement under Custer's second in command, Maj. Marcus A. Reno. A few survived but became lost to history, and little is known about their lives after they left the battlefield.

One who has not been forgotten is Sergeant Thomas F. O'Neill. In later years, he became one of the first sergeants of the United States Park Watchmen, now known as the U.S. Park Police.

O'Neill was born Jan. 14, 1847, in Dublin, Ireland, and came to the United States when he was 11 years old. At the age of 15 he ran away from home, lied about his age, and enlisted in Company F, 12th New York State Militia and served in the Civil War. He was discharged in 1865 from Troop F, 10th New York Cavalry. After enlisting and serving in various U.S. Army units from November, 1865 until December, 1871, he enlisted in Troop G, 7th U.S. Cavalry in January 1872.

On the morning of June 25, 1876, O'Neill was a member of Reno's command of 112 men when it made a gallant but ineffectual attack on the Indian village strung along the Little Big Horn. Reno's initial charge was repulsed, and the survivors attempted to retreat across the Little Big Horn where they hoped to take shelter and rejoin Custer.

During this retreat, Sergeant O'Neill and Lt. Charles C. DeRudio had their mounts shot from beneath them and spent the next 36 hours on foot attempting to cross the river to safety. Dodging from point to point, they eluded capture and finally, late on the night of June 26, after some miraculous escapes, managed to cross the river. They wandered over bluffs and through ravines for several hours before locating the Reno command. About 2 a.m. on the 27th they heard the distant bray of a mule and shortly thereafter were welcomed inside Reno's lines.

O'Neill rose to 1st Sergeant, and was discharged from the Army on Jan. 27, 1890. He moved to Washington, D.C., married and became a U.S. Park Watchman, authorized by Congress in 1882. O'Neill died March 22, 1914, and was buried in Arlington National Cemetery 5 years before Congress changed the title of the Park Watchmen to the U.S. Park Police.

Correction

In a recent mailing that went out to all NPS employees concerning membership in the Employee & Alumni Association, I enclosed a letter indicating my support of E&AA and encouraging membership in this fine organization.

It was certainly not my intention to encourage only the wives of NPS employees to join E&AA. My invitation is to ALL women employees. I know how much all of you contribute and that the women's organization is for all women involved with NPS. My sincerest apologies.

Bill Whalen

The first year—What it's like

Recent retirees are frequently asked the question, "What do you do with all your free time?" Below is a short account of what Ray and Marie Freeman did during their free time during the first 15 months after his retirement from a WASO assistant directorship.

First, they flew to St. Martin's Island in the Caribbean in February 1977 to celebrate not having to punch a time clock. They relaxed on the beach, went swimming and snorkeling, and ate the great French food on the French side of the island where they stayed.

The highlight of the year occurred in August when they had the unforgettable experience of going to Japan. They spent a month visiting many Japanese National Parks and shrines as well as Tokyo, Hakone, Kyoto, Osaka, Toba, Nikko, and Shimoda. They had the opportunity of meeting and associating with many Japanese people and of learning about their culture and interests. On a holiday weekend, they stayed at a vacation village and not only had the *real* Japanese food but also the *real* Japanese accommodations. They hope to return someday to see some of the other islands of Japan.

As they had never seen the autumn color in the northern states, in October they drove from Minneapolis to Duluth, then east along the coast of Lake Superior to Pictured Rocks National Lakeshore, from there to Sault St. Marie, then south to Sleeping Bear Dunes National Lakeshore, and finally to Niagara Falls and home.

The latter part of January 1978 they started a driving trip to the West Coast to see old friends and relatives and to show Marie the National Park System areas which she had never seen.

Their first main stop was Atlanta where they visited Joe and Betty Brown and Donna and Dave Wright. Their route from there included Mobile, New Orleans (Mardi Gras), Chalmette, Austin (LBJ ranch and library), Carlsbad Caverns, Guadalupe, Chamizal, and Santa Fe where they had a reunion with the Rumbergs, Fitches, Walkers, Josephs, and Lois Kowski. Ray also spent several hours at the Regional Office chatting with John Cook, Ted Thompson, Doug Warnock, and Urban Rodgers. They then went on to Taos, Petrified Forest, Sunset Crater (covered with beautiful snow), Wupatki, and the Grand Canyon.

After driving down Oak Creek Canyon to breath-taking Sedona, they drove to Tuzigoot, Phoenix, and Tucson where they spent a very enjoyable evening with Jane and Spud Bill and chatted with Bill Carnes. They were sorry time did not permit them to look up other friends as well. They ended the first half of the trip by seeing Saguaro and Organ Pipe Cactus on the way to San Diego where they spent a month at Rancho Bernardo. The wonderful climate, proximity to the ocean, mountains, and the desert, as well as the swimming, golfing, hiking, and sight-seeing made their stay very enjoyable.

The return trip started with a drive up the California coast to San Francisco and to Sonoma to visit Glenn and Lilo Hendrix in their beautiful new home. While there, they took a drive to the Napa Valley and stopped in to see the Bob Halls and the Richeys (Chuck's brother). The last leg of their trip consisted of going east by way of Sequoia, Death Valley, Monument Valley, Zion, Canyonlands, Mesa Verde, Great Sand Dunes, and Denver. They saw Ted and Helen Swem in their new home in Evergreen, and also Ray spent

a morning visiting numerous friends and associates in the Service Center. Except for a quick stop in Omaha to call the Howard Bakers, the rest of the trip was just drive, drive, drive.

So now you know how *one* recent Park Service retiree spent his free time during the first year of retirement.



Ray and Marie Freeman.

Any ideas for E&AA trips???

I have been questioned why E&AA did not sponsor a trip in 1978. Tentatively a trip in the Midwest was proposed at the 1977 Board meeting in Denver, and a chairman of a committee was appointed. The trip could have included areas from Isle Royale through the Black Hills into the Northern Rockies.

Unfortunately a full Board meeting was not held in 1978. Key persons on the Board could not be present at the Executive Board meeting in Washington in April.

A breakdown in communications contributed, letters not answered, long distance telephone calls not returned, etc., and prevented the key Board members from confirming definite plans. Tentative commitments were not fulfilled, therefore no final plans could be made. We are sorry.

Any members having suggestions for a 1979 trip should let their representatives know before the next Board meeting, spring of 1979.

George W. Fry
Chairman of the Board

Blauvelt gets E&AA post

Nancy Blauvelt has been named employee representative of the Employees and Alumni Association for the Washington, D.C., office. She succeeds Bobbie Woodside, who transferred to the National Capital Region several months ago.

Nancy, a 13-year NPS veteran, works as a staff assistant to the Associate Director for Management and Operations, Jim Tobin.

The E&AA Board of Directors selected her to complete the remaining 2½ years of Woodside's term.

Your E&AA Representatives

George Fry	Chairman of the Board
Wayne Bryant	Vice-Chairman
Mary Lou Phillips	Executive Secretary
C. P. Montgomery	Treasurer
Earl M. Semingsen	Trust Fund Officer
Eunice B. Young	Education Trust Officer

Mid-Atlantic

Employee-Wallace Elms
Alumni-Ross Sweeny

Southeast

Employee-Vern Ingram
Alumni-George Fry

Midwest

Employee-William Birdsell
Alumni-Raymond Rundell

Southwest

Employee-Wayne Cone
Alumni-Carl Walker

Western

Employee-Curtis O'Sullivan
Alumni-Mary Benson

WASO

Employee-Nancy Blauvelt

North Atlantic

Employee-Bill Locke
Alumni-Nash Castro

HFC

Employee-Richard Russell

NCP

Employee-Hugh C. Muller
Alumni-Ted Smith

Rocky Mountain

Employee-Wayne W. Bryant
Alumni-Bill Bowen

Pacific Northwest

Employee-Ed Kurtz
Alumni-Harvey Reynolds

Denver Service Center

Employee-John J. Reynolds

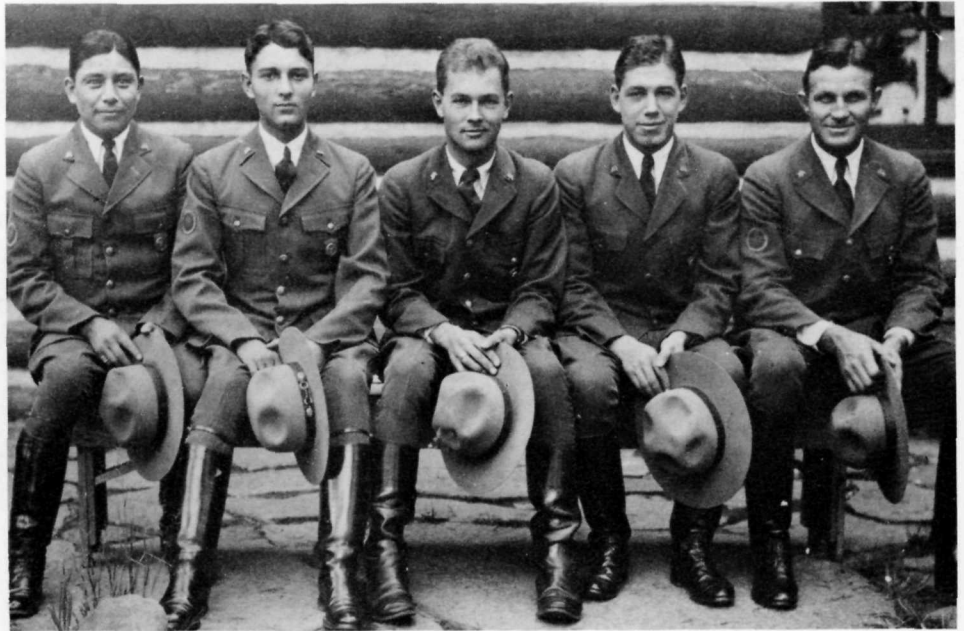
At Large-Conrad Wirth

Yellowstone nostalgia

(Ed.'s Note: Fred R. Morrell, NPS retiree who lives in Arlington, Va., came across this old photo, while rummaging through his files recently. He wrote to us.)

"This is the Upper Basin Ranger force at Yellowstone National Park of 1933. From left to right, Bill Williamson, a full-blooded Indian from Dakota, who when last I heard was an athletic coach there; George Knock, whose only claim to fame was the most highly-polished boots in the park; the writer, Fred Rowe Morrell; Eli Eichleberger, now a distinguished physician in York, Pa.; and the great Wayne Replogle, the permanent seasonal ranger, who that year rode a bike as a motorcycle cop."

Fred continues: "Frank Childs, the nominal chief of this group and our 'permanent' ranger, was forced to depart our company early in June to fight the great Heart Lake Fire, and after it was out he was sent quickly to Glacier National Park, Mont., to fight another blaze. The poor guy missed the whole beautiful summer, and as senior seasonal, I inherited his job. We made it, and I treasure that 4 months more than any before or since."



Too much coffee forces retirement

When I was in Len Volz's office in the fall of 1962, we had coffee together. He opened a desk drawer to reveal that it was nearly full of the plastic spoons that came with such coffee. "When that is full," said he, "I'll be ready to retire." Whether it was filled when he retired, I do not know; at any rate, it was a heart attack that resulted, in 1974, in his retirement and his move to Fort Collins, Colo.

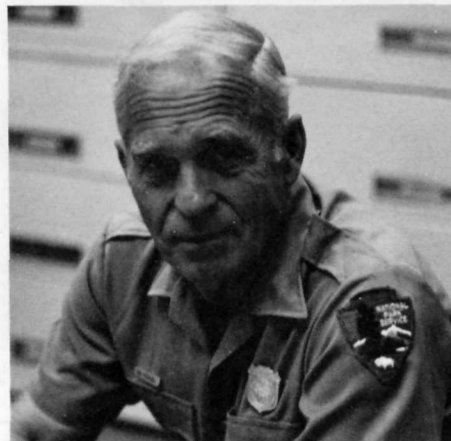
Writing from there on May 10, he said: "I became involved here with a cardiac rehabilitation program over at CSU. (CSU? This is the college—excuse me—university—that has graduates scattered rather thickly throughout the Service.) After preliminary testing and so forth, they started me out walking a brisk half-mile. I got up to 3 miles of jogging and feel better than I have for a long, long time. I don't look any better. . . . You know, it was sort of funny. After 40 years I was back in the same locker room in the old CSU gym where I used to get dressed for football and track, and darn near the same locker. However, the third shower from the right didn't work 40 years ago and it still doesn't."

Len also gets in some golf. "There are a couple of 75-year-old retired farmers I play with quite often. My ambition is to beat them someday. I can outdrive them 40 yards but they seem to be on the green in the same number of strokes and when they putt, the ball has eyes. Plunk! They just grin and wink at each other and it is on to the next hole and usually the same. Someday!"

Smallest visitor center????

Visitor centers come in all shapes and sizes but which park has the smallest visitor center of them all? At Fort Matanzas National Monument, St. Augustine, Fla., we think we do. Situated off a breezeway of an old house the visitor center measures 9'8" x 16'4" with an 8-foot ceiling. If yours is smaller write us and let us know.

Arnie Neustaetter
Park Technician



Hal Packard plans garden

Hal W. Packard, sub-district ranger at Sequoia National Park, Calif., recently retired after a 27-year NPS career.

Packard came to Sequoia in 1924 with his father who was then a district ranger. He still remembers his family's first residence—a one room affair with a dirt floor.

"I remember that dad had his own horse and tack which in those days was required for park rangers," recalls Packard. "He also owned a Baby Grand Chevrolet with a hinged steering wheel so that chubby drivers could get in."

Packard started his career as a seasonal ranger at Lassen Volcanic National Park, Calif., in 1950. He served tours at Yosemite National Park, neighboring Kings Canyon National Park, then Sequoia and then took a permanent position at Death Valley National Monument, Calif.-Nev. in 1954.

Later that year he moved back to Sequoia and spent the rest of his career there.

He has purchased a small acreage in Lindsay, just south of Sequoia, and he and his wife, Diane, "plan to do a lot of gardening and fixing up" during retirement.

He also plans to pursue his hobby of fixing up old cars.

Weigs move to hill country

Back in 1935, when a young historian named Melvin Weig was employed as a junior historian attached to the CCC camp at Morristown National Historical Park, he became interested in the plant and animal and bird life on the lands of the park, especially in the Jockey Hollow area. Noting his interest, especially in birds, the camp superintendent recommended that he consult a local girl, one Elsie Strole, if he wanted to learn more about them. Shortly after he met Miss Strole, he made an early-morning date to accompany her on a "birding" expedition. The two were married early in 1938 and their joint interest in birds has never waned in the intervening 40 years.

Recently I had occasion to write Mel and was surprised, when I came to look up his address, to find that he and Elsie are now residents of Western North Carolina. I then learned from him that in 1973 he had bought a home-site just east of the Blue Ridge, on the lower slope of Forge Mountain. From his description of the area now occupied by the home he built there, it would seem that he and Elsie occupy what might be called a junior national park, with fine woods, lots of flame azalea and rhododendron, and a lively mountain stream and several springs.

Mel wrote just after he and Elsie had returned from a month of motoring, visiting, "and mostly birding" in the Southwest. During the trip, said he, Elsie "just had to see the rare Coppery-tailed Trogon (and we did, the pair, in Garden Canyon within the Fort Huachuca Reservation). Also got some 35 other new species, a total of 140 species in the Southwest, and a grand tally of 200 species for the whole trip.

"We had a wonderful repeat visit with Carlisle and Thelma Crouch. We also visited friends retired in that area, including Marie Absalon, formerly of the Morristown staff, now living alone in a lovely old hacienda near Espanola, N.Mex. Her husband, Ken, passed away unexpectedly hardly a year after they moved there from Morristown following their retirement."

— Herb Evison

Center opens at Carlsbad Caverns

A cooperative agreement has been entered into with the Travel Division of the New Mexico Department of Commerce and Industry for operation of a joint information center with NPS at the Carlsbad Caverns National Park headquarters office.

Previously, the two agencies had operated separate information centers during the summer season at locations approximately 5 miles apart.

The jointly operated facility will replace the State information center.

According to officials of both agencies, the quality of visitor service should be greatly improved by the new cooperative venture.

Under the agreement, the State Department of Commerce and Industry's Travel Division will furnish two student-aid information receptionists who, along with Park Service personnel, will staff the center from late May through Labor Day. It will be open 7 days a week from 8 a.m. to 5 p.m. starting May 27.

Maps, brochures and other literature on State, County, City, and Federal attractions in New Mexico will be available to visitors at the center,



along with Golden Eagle and Golden Age Passports for admission to Federal recreation areas, and interpretive publications which may be purchased.

The State Travel Division will request additional highway signing on the approaches

Personnel who will be staffing the information center include Mary Browning and Nellie Rodriguez of the Park Service and Cindy Holley and Pearlene Bradshaw of the State Commerce and Industry Department's Travel Division.

NPS honors young scientists

*By Marie Zack
Environmental Assistant, WASO*

One way NPS encourages young people to concern themselves with the environment is by granting the Environmental Conservation Award. The award is given at the International Science and Engineering Fair, an annual gathering of high school students from around the country who present homemade science exhibits, many dealing with man and nature.

Four students are selected for this coveted award which consists of a \$100 U.S. Savings Bond, and an opportunity for summer employment in a park. The four scientists who make the selection base their decisions on projects that best illustrate the natural world and the complex relationships that exist between man and his natural environment.

This year the fair was held in Anaheim, California in early May. The jury of scientists for the NPS award included Dr. R. Roy Johnson, senior research scientist at Grand Canyon National Park; Dr. Milford Fletcher, regional biologist with the Southwest Region; and Dr. Robert M. Linn, senior scientist at Michigan Technological University.

Excitement ran high at the awards ceremony, in which many awards were given in addition to the Environmental Conservation Award. But many of the finalists had already tried to gain employment with NPS and failed, so competition for the NPS award was particularly high. Victor Zinck, who was selected for his entree, "Study of the Late Pleistocene Ecology at Vero, Florida," had told his family beforehand that the prize he most dearly wanted was the NPS award.

Of the more than 20 park areas that had submitted work opportunities Great Smoky Mountains National Park, N.C.-Tenn., Sleeping Bear Dunes National Lakeshore, Mich., Buffalo River National Lakeshore, Ark., and Grand Canyon National Park, Ariz., were selected by



Dr. R. Roy Johnson (left) presenting environmental conservation awards to (from left) Scott Cross, Frank Smietana, Bryan Barger and Victor Zinck.

the winners. Over the summer they will be involved in a range of work—from water quality research, visitor-use monitoring, wild boar studies, pesticide problems, resource evaluation and vegetation mapping.

The Office of the Chief Scientist provides the funding, positions and arrangements for the Environmental Conservation Award. They consider the International Science and Engineering Fair a meaningful way for NPS to foster concern for the environment among young people.

Cades Cove under study

Dr. Durwood Dunn, chairman of the history department at Tennessee Wesleyan College, has been awarded a research grant by the National Endowment for the Humanities for writing a book dealing with Cades Cove, Tenn.

Dr. Dunn is studying the community from its first settlement in 1818 to its final dismemberment in 1938, when the area became part of the Great Smoky Mountains National Park. His study will deal with the settlement, growth, social change, folklore and folk culture of the small mountain community.

Western Region holds pilot law enforcement training

By Bill Orr
Visitor Protection
Western Region

Nineteen young people successfully completed the first session of a special 200-hour law enforcement training program given at the Criminal Justice Training Center, Santa Rosa Junior College, Santa Rosa, Calif., from March 20 to April 15.

The graduates, mostly seasonal rangers, represented seven national parks, one national seashore, one national monument, one national forest and one country park. Approximately half were from the Western Region and four were from parks in the Rocky Mountain Region.

The program was developed to provide a means for seasonal rangers to obtain the training as specified by the Law Enforcement (Ranger Image) Task Force in order to qualify for a Law Enforcement Commission. The training has the approval of the Department as a pilot program for this year. If it proves to be as effective as expected, it may be continued and expanded in the future.

A second session, also of 4 weeks duration, started April 17, with 18 students enrolled. A third session began May 15 and ended June 9.

The graduates of the first session are as follows:

First row: Karen Jettmar, Gary Jacuk, Margaret Gorski, Tim Tunison, Sonja Hoie:

Second Row: Peter Pilegrin, Terry Harris, Mike Mekjian, Ken Carley, Tim Dallas:

Third row: Mark Law, Mark Windham, Jacobus Scholton, Jim Daugherty, Paul Koehler:

Fourth Row: Chris Musser, Mike Mustafaga, Joe Vinson, Bob Kingwood.



A day in the life

Fort McHenry National Monument and Historic Shrine recently came alive with the help of the 1st Maryland Regiment commanded by the National Park Service's very own Bill Brown of the Harpers Ferry Center, W.Va.

This group demonstrated to the visitors a typical day in the life of Union soldiers stationed at Fort McHenry during 1862. Visitors were able to observe cooking facilities, infantry drills, recreational activities, soldiers' barracks, guard-room activities, and musket loading demonstrations. An 1860 infirmary was set up with all the "modern" medical techniques, and a sutler store was opened for the visitor's shopping convenience.

Park visitors freely associated with the soldiers on a one-to-one basis to get an idea of Union soldier life at Fort McHenry during the Civil War.

Fort McHenry and the 1st Maryland Regiment also presented "The History of the American Soldier from 1634 to Present." In this hour-long sound and light show, a dramatic tribute was paid to the American fighting man. Each man depicted a different fighting era by wearing the uniform, weapons, and accouterments of his particular period. A special tribute was paid to all veterans attending the program as they were invited to join the rest of the "soldiers" during the



playing of Taps and "The Star-Spangled Banner."

Although the Fort was principally noted for its role in the successful defense of the city during the British attack on Baltimore in September, 1814, and the subsequent writing of the national

anthem, it was used during the Civil War as a Union camp for the detention of Confederate soldiers and sympathizers to the Confederate cause—one of these being Frank Key Howard, grandson of Francis Scott Key, writer of "The Star-Spangled Banner."

Bean named RMR director



Glen T. Bean has been appointed regional director of the Rocky Mountain Region with headquarters in Denver.

Bean has been deputy director of that region since 1974. As director, he will succeed Lynn H. Thompson, who recently was named general superintendent of the Golden Gate National Recreation Area, Calif.

In his 30 years with the Park Service, Bean has been superintendent of five park areas, including Great Sand Dunes National Monument, Colo.; Chaco Canyon National Monument, N.Mex.; Bryce Canyon National Park, Utah; Hawaii Volcanoes National Park, and Lake Mead National Recreation Area, Nev.-Ariz.

He also served at Bandelier National Monument, N.Mex.; Organ Pipe Cactus National Monument, Ariz.; Yellowstone National Park and Blue Ridge Parkway, N.C.-Va.

In other assignments, Bean was assistant regional director of the Midwest Regional Office at Omaha, in 1964-65, and was assistant director for Policy and Program Analysis in WASO, from 1967 until 1971.

A native of Blanca, Colo., Bean was graduated from Adams State College in Alamosa, Colo., in 1936 and earned a master of arts degree from George Peabody College, Nashville, Tenn., in 1941.

He joined NPS as a seasonal ranger at Great Sand Dunes in 1946 after service in the Army Air Corps in World War II. His first permanent NPS employment was in 1947 as a clerk at Bandelier.

Bean won the Meritorious Service Award in 1967, and received the Interior Department's highest honor, the Distinguished Service Award, in 1976.

He and his wife, Lois, are parents of four daughters and a son. They make their home at 825 Allison St., Lakewood, Colo.

Ortega to Pecos



Ernest W. Ortega, 33, a northern New Mexico native, has been named superintendent of Pecos

National Monument, N.Mex.

Ortega will succeed Thomas F. Giles, who recently retired as superintendent of Pecos, a 364-acre monument which preserves the ruins of 17th and 18th-century mission churches and ancient Pueblo structural remains.

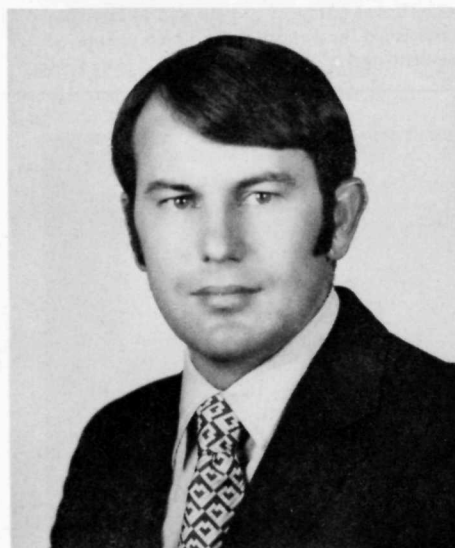
Ortega holds B.A. (1967) and M.A. (1970) degrees in history from New Mexico Highlands University at Las Vegas N.Mex. The Spanish Southwest was the special emphasis of his graduate degree.

Ortega reports to Pecos after a stint as chief of Interpretation and Resource Management at Fort Necessity National Battlefield, Pa.

His first permanent assignment with the Park Service was as a ranger at El Morro National Monument, N.Mex. He has also worked as a seasonal ranger at Fort Union National Monument, N.Mex. Before joining NPS, Ortega taught junior high school in Las Vegas and high school in Pojaque, N.Mex.

Ortega and his wife, Mary Ellen, have one child, Roland Eugene, 14 months.

Surles to head concessions



Lloyd E. "Buddy" Surles, concession specialist for Yellowstone National Park, has been named chief of Concessions Management for the Park Service.

Born in Cisco, Tex., the 33-year-old Surles joined the NPS in February 1976 as a concession analyst in the Rocky Mountain Regional Office. He moved to Yellowstone in October of that year.

Surles earned his bachelor's degree in parks and recreation from Texas A&M University. He was director of Arkansas State Parks from 1970-74 and director of parks and recreation for the city of New Braunfels, Tex., from 1968-69.

He has served as president of the Southeastern Association of State Park Directors and the Arkansas Recreation and Park Society and was on the Boards of Directors for the National Society for Park Resources and for the Professional Certification and Registration for the National Recreation and Park Association (NRPA). He won the 1974 National Award for Excellence in State Park Management from NRPA.

He and his wife, Margaret, have three daughters, Lori, 12; Elissa, 11, and Holly, 7.

Mobility becomes Mintzmyer



Lorraine Mintzmyer, a veteran of 19 years in the Park Service, has been named deputy regional director in the Southwest.

Regional Director John E. Cook made the selection of Mrs. Mintzmyer, presently superintendent at Buffalo National River, Ark., as the second ranking NPS official in the region.

"Lorraine Mintzmyer is a proven manager who is familiar with the parks in the region," Cook said. "She has been a park planner at the regional level and has experience in parks of both a natural-recreational and an historical nature."

The region consists of 33 areas of the National Park System in Texas, New Mexico, Oklahoma, Arkansas, Louisiana and the northeast corner of Arizona.

Mrs. Mintzmyer, who will begin her new duties Aug. 1, replaced Theodore R. (Ted) Thompson, who retired recently.

At Buffalo National River in northwestern Arkansas, Mrs. Mintzmyer had charge of one of the few sizeable, free-flowing streams remaining in America. Authorized by congress in 1972, the Buffalo stretches across 132 miles and four counties. A major program of land acquisition to get the relatively new park functional has been under way during her tenure there, which began in mid-1976.

Before being named superintendent at Buffalo, she completed 10 months of training in the Department of the Interior Management Development Program, which identifies and trains employees to fill top level career positions. She was one of 37 selected for that program.

Mrs. Mintzmyer's first superintendency was at Herbert Hoover National Historic Site, Iowa, where she was involved in the operation and maintenance of a 187-acre site with 40 historic buildings. During her tenure at Herbert Hoover she was responsible for planning and coordinating the Centennial Celebration of the birth of Hoover.

She also served for 5 years as a program coordinator in the Midwest Region—then a 10-State region which included such big parks as Yellowstone. In that role, she was in charge of all master planning and programming.

Born in Adair, Iowa, she attended Iowa State Teachers College and the University of Nebraska at Omaha, majoring in business administration. Before joining the National Park Service, she was in banking for 6 years.

Mentzer gets call



"Growth and change are the normal condition," says Frank Mentzer. "To avoid growing and to fear change is to die."

Five days before his 58th birthday and just 2 years before he was eligible for retirement, Frank Mentzer quit a top level position as the Southwest Region Public Affairs Officer to become the pastor of three small United Methodist Churches in the mountains of eastern West Virginia at about one-fourth the salary.

It wasn't a sudden decision. About 5 years ago, Mentzer "got the call." He had only recently moved to Santa Fe so he contacted the minister of his home church in Thurmont, Md., to find out what he should do. The first step, he learned, was to be examined by a committee of ordained ministers. He flew back east and passed the test.

Since then he has been studying, both by correspondence and, during annual leave, in residence at the Course of Study School at Perkins Seminary, Dallas, Tex. The idea was that after he completed his civil service career he would retire and enter the ministry.

Then, last month, he was asked to accept the Shenandale charge of the Baltimore Conference's Frederick District near Harper's Ferry, W.Va.

"Suddenly I felt the moment had come," he said.

"I've enjoyed my 16 years in the National Park Service. It was a time of growth and fulfillment. I've cherished the opportunity to help people enjoy their parks."

And so it was that the man who introduced the first "bootleg" corn liquor still into a Park Service area as a "living history" demonstration became a preacher.

Mentzer was the superintendent of Catoclin Mountain Park, when he came upon the idea of restoring an old still in the park to show visitors "how it used to be."

After working his way through a mountain of red tape, Mentzer got the still operating again, to the delight of visitors. Then he and Federal Alcohol and Tobacco Tax officials agreed to doctor the bootleg liquor with a substance to make it unfit for human consumption.

The still idea, popular with visitors, earned Mentzer an appearance on Gary Moore's "To Tell the Truth" television show as a "legal moonshiner."

After a tour as superintendent at Catoclin, he was named to the position of assistant to the Regional Director for Public Affairs in Santa Fe.

Mentzer's Federal career began 16 years ago as public affairs officer in the 16-State Northeast Region, headquartered in Philadelphia.

Editor's Note: Mentzer's address is Route 3, Box 333, Harpers Ferry, W.Va. 25425. His phone is 304-735-4157.

Rinaldi named to Appalachian post

Charles R. Rinaldi has been named the land acquisition officer for the Appalachian Trail Land Office—South. His appointment takes effect July 2.

President Carter signed legislation March 21 authorizing an additional \$90 million for acquisition of the trail's right-of-way. To implement the legislation, NPS is establishing three land acquisition offices.

Other Appalachian Trail land acquisition offices will be located in Lebanon, N.H., and Allentown, Pa. Rinaldi is to be stationed in Martinsburg, W.Va.

Rinaldi began his Park Service career in 1955 as a clerk at Harpers Ferry National Historical Park, W.Va. He served for 3 years as an administrative assistant at Roosevelt-Vanderbilt National Historic Site, N.Y., and for 4 years as administrative officer at Cape Cod National Seashore, Mass., from 1962-66.

Later he was a program specialist with WASO's Land Acquisition Division, before becoming chief of the Branch of Coordination and Control and then chief of the Division.

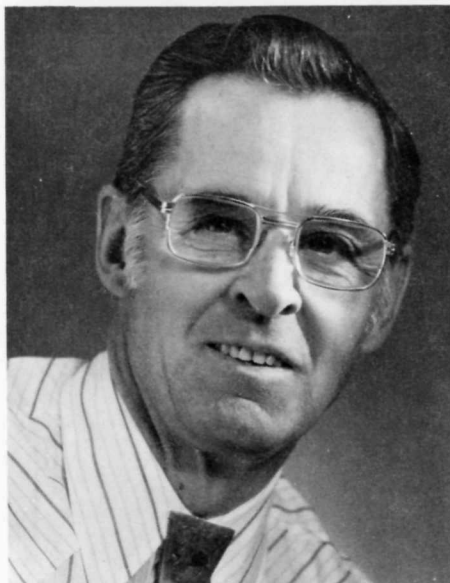
He is married and he and his wife, Hazel, have three children, Shelia, 24; Charles Jr., 22, and Shannon, 4.

Rinaldi received the Interior Department's Meritorious Service Award in September, 1977.

Ted Thompson ends 30-year career

Theodore R. "Ted" Thompson, deputy director of the Southwest Region, has retired after more than 30 years of Government service.

Stationed in the SWR since 1971, Thompson was recently honored at a retirement dinner attended by 160 persons, including the superin-



Ted Thompson.

tendents of 33 NPS areas in the region.

At the dinner, SWR Director John E. Cook presented to Thompson the Interior Department's Meritorious Service Award.

His citation from Secretary Andrus stated: "Mr. Thompson has demonstrated outstanding ability that has contributed greatly to the protection and conservation of the Nation's most sacred natural and historical resources."

Joining NPS shortly after WW II, Thompson first served as a seasonal at Sequoia and Kings Canyon National Parks, Calif.

During his career he held superintendencies at Tonto National Monument, Ariz.; Lehman Caves National Monument, Nev.; Dinosaur National Monument, Colo.-Utah, and Rocky Mountain National Park, Colo.

He also served as assistant superintendent at Yosemite National Park, as chief ranger at Grand

Canyon National Park, and as assistant chief ranger at Lake Mead National Recreation Area, Nev.-Ariz.

From 1962-65, he served as the Service's foremost expert in fire fighting and prevention in the position of Western Regional fire control officer.

Thompson and his wife, Dixie, will remain in Santa Fe after retirement.

Gene Balaz back to Denver

Gene J. Balaz, assistant superintendent at Big Bend National Park, Tex., has accepted a transfer to the Denver Service Center.

Balaz, who has served at Big Bend since September 1975 will work in the newly formed Division of Special Services. This unit will include New Area Studies, the National Trails System, and Wild and Scenic Rivers Studies.

"Gene served as acting superintendent at Big Bend for several months before my arrival," said Superintendent Robert C. Haraden, "and he has done an excellent job of briefing me on park operations."

Superintendent Haraden announced that Balaz is to receive a Special Achievement Award for his performance of duties at Big Bend.

Dave Wright NPS planning chief

Earlier this year, David G. Wright was appointed assistant director, Planning and Development at WASO.

He joined NPS in 1969 and has served as staff assistant to the associate director for Professional Services and the associate director, Operations, and was chief of the Division of New Program Development. In 1973 he became associate manager, Production, and later associate manager of the Denver Service Center.

In March 1976, he was transferred to Atlanta for a 2-year stint as deputy regional director of the Southeast Region.



People on the move



New faces

ARANGUREN, Deborah K., Clerk-Typist, PN/W Team
 BARNES, Kenneth R., Maintenancecman, Whiskeytown NRA
 BERKOWITZ, Paul D., Park Tech, Indiana Dunes NL
 BERMAN, Robert E., Architect, MA/NA Team, DSC
 BLOM, Kenneth G., Maintenance Mechanic, Fire Island NS
 BRAITHWAITE, Kay, Clerk-Typist, Operations, WRO
 BUEHLER, Douglas A., Park Tech, Rocky Mountain NP
 BURROWS, James T., Laborer, Pipefitting Shop, NCR
 CARR, Joann C., Clerk-Steno, Cape Lookout NS
 CHARAK, Marilyn, Sec, NARO
 CLAYBORN, Ronald L., Maintenance Worker, Indiana Dunes NL
 COOK, John R., Maintenance Worker, Maintenance Div, NCR
 CROMBIE, Sandra L., Clerk, Oregon Caves NM
 DEASON, Patrick L., Park Tech, Richmond NBP
 DOLINICH, Margaret L., Park Tech, Operations, WRO
 EDMONDS, Mary K., Clerk-Typist, Fort Larned NHS
 GARLAND, Karen L., Park Aid, Buffalo NR
 GLICKSMAN, Laura, Park Tech, NCP-Central
 GLYNN, Thomas F., Theatre Tech, Br Community Services, NCR
 GOLFARB, Susan L., Park Tech, Independence NHP
 GRUBB, Fern, Janitor, Devils Tower NM
 HITE, Ralph K., Tree Worker, Tree Maintenance Group, NCR
 LAPOLE, William E., Piedmont District, NCR
 LITTLE, Ted W., Building Repairman, Lake Mead NRA
 LYNN, Elwood, Mobile Equipm't Servicer, Canyonlands NP
 McLOUGHLIN, Bernadette, Procurement Agent, Valley Forge NHP
 McCORKLE, Elizabeth M., Clerk-Steno, Independence NHP
 McNAIR, Dalene F., Clerk-Typist, Klamath Falls Group
 MITCHELL, Nancy F., Sec, MWRO
 PORCASE, Rebecca S., Clerk-Typist, Cuyahoga Valley NRA
 ROSE, Paul, Hydrologist, Everglades NP
 REILLY, James K., Park Tech, Yosemite NP
 SAKAGUCHI, Paul G., Maintenance Worker, Yosemite NP
 SATERN, Donna L., Admin Clerk, Coronado NM
 SILVERSTEIN, Mark, Position Classification Spec, MARO
 SONS, Beverly A., Clerk-Typist, MA/NA Team, DSC
 SOSSAMON, Donald B., Motor Vehicle Operator, Bandlier NM
 SPIVEY, Leroy B., Safety Mgr, WASO
 SWIFT, Sharon L., Clerk, Point Reyes NS
 THOMAS, Paul A., Park Tech, Recreation & Resource Mgmt, NCR

TRIGG, Edmund L., Maintenance Worker, Grand Teton NP
 VAUGHAN, Doris Kay, Admin Clerk, Prince William Forest Park
 WIMER, James W., Tree Worker, Tree Maintenance Group, NCR
 ANTONINI, Mary J., Clerk-Steno, Fort Necessity NB
 BAKER, Gloria J., Clerk-Typist, Training, WASO
 BRIGHT, William H., Motor Vehicle Operator, Hatteras Island
 BURRIS, Jane H., Program Clerk, MW/RM Team, DSC
 CALAMAR, Mark E., Motor Vehicle Operator, Black Canyon of the Gunnison NM
 CAMPBELL, John L., Maintenance Mechanic, Fort McHenry NM & Hist Shrine
 CROSSMAN, Wendy J., Clerk-Typist, Saratoga NHP
 EAGLE, Joanna S., Park Tech, Interp Recreation & Resource Mgmt, NCR
 ESCALANTE, Ernestine V., Supv Park Ranger, Joshua Tree NM
 FINCTT, Lewis A. Jr., Supv Personnel Mgmt Spec, Administration, RMRO
 FREDERICKS, Lawrence T., Janitor, Boston NHP
 GRAHAM, Virgle A., Laborer, Stones River NB
 GRAY, Robert W., Park Tech, Hatteras Island
 HEYWOOD, Jeffrey E., Landscape Architect, NC Team, DSC
 HILLARD, William F., Lead Accounting Tech, Administration, NARO
 JOHNSON, Mark W., Park Tech, Castillo De San Marcos NM
 JONES, Janifer W., Realty Clerk, Planning & Assist, SERO
 JUGAN, Stephen G., Park Tech, Antietam NBS
 KOENIGS, Nicholas H., Plumber, Glacier NP
 LaFEMINA, Joseph G., Civil Engineer, Gateway NRA
 MAIMER, Bernard P., Surveying Tech, Professional Support, DSC
 MALLARDO, Ralph A., Supv Accountant, Administration, NARO
 MARCEAU, Michael O., Communications Technician, Special Operations, NCR
 McKIM, David C., Cartographic Aid, Big Cypress Land Acquisition Office
 MONTES, Elsie T., Clerk-Typist, Operations, SWRO
 MURPHY, Uranel B., Payroll Clerk, Administration, RMRO
 NADEAU, Sharon C., Clerk-Steno, Gateway NRA
 PACE, George S., Park Tech, Blue Ridge Pkwy
 PAIGE, John C., Historian, NC Team, DSC
 PEGRAM, Timothy W., Park Tech, Blue Ridge Pkwy
 PERSE, James E., Maintenance Worker, Glacier NP
 ROBB, Kathleen M., Clerk, Fire Island NS
 SEIDEL, Ellen M., Archeologist, NC Team, DSC
 SHELBY, Ronald, Animal Caretaker, NCR
 SYLVESTER, Philip T., Cartographic Aid, Big Cypress Land Acquisition Office

TEEL, James E., Maintenancecman (Carpenter), Whiskeytown NRA
 TRAVIS, Marjorie J., Sec, Lake Mead NRA
 TRAYNHAM, Garry M., Park Tech, Blue Ridge Pkwy
 TREMBLAY, Barry D., Staff Accountant, Administration, NARO
 ULRICH, Susan E., Park Tech, Gettysburg NMP
 VAN ASPEREN, Donald, Utility Systems Repairer-Operator, Grand Teton NP
 VAUGHN, Brooks, Photographer, Gateway NRA
 WALDOW, Elizabeth, Park Tech, NCP-Central
 WILLIAMS, Michael D., Civil Engineer, MA/NA Team, DSC
 WONG, Terry Lee, Civil Engineer (Structural), NC Team, DSC
 ALESCH, Richard J., Outdoor Recreation Planner, NC Team, DSC
 AMELL, Christine, Clerk-Steno, Planning & Resource Preservation, NARO
 ASHLEY, Joseph O., Park Tech, Great Smoky Mountains NP
 BEALS, Deana K., Clerk-Typist, NC Team, DSC
 BRACKETT, Neva J., Mail & File Clerk, Lake Meredith RA
 BRENT, Joyce D., Sec, Fredericksburg & Spotsylvania Btfd Mem NMP
 BRUMBELOW, Jerre L., Electrical Worker, Colonial NHP
 CAIRO, Denise S., Position Classification Spec, MARO
 CALLINAN, Jeanne R., Budget Clerk, Everglades NP
 COLEMAN, James L., Park Tech, Saguaro NM
 COOK, Cheri L., Clerk-Typist, North Cascades NP
 DAVIS, James E., Motor Vehicle Operator, Glen Canyon NRA
 DHILLON, Jagjit S., Mechanical Engineer, NC Team, DSC
 DREIER, David H., Landscape Architect, Park System Mgmt, MARO
 FAIR, Abner W., Maintenance Worker, NCR
 GOLLIDAY, Stephen A., Maintenance Worker, Tree Group, NCR
 GOSNEY, Shirley D., Program Clerk, Planning & Resource Preserv, MWRO
 GRAY, Cletus C., Laborer, Shenandoah NP
 GROMLING, Debra A., Clerk-Steno, Planning & Resource Pres, PNRO
 GUERRA, Elpidio, Maintenance Worker, Amistad RA
 HANCOCK, Robert W., Maintenance Worker, Amistad RA
 HANCOCK, Robert W., Maintenance Worker, Cape Lookout NS
 HANLY, Ruth C., Sec, Planning & Resource Preserv, PNRO
 HOGGARD, Riley G., Park Tech, Cape Lookout NS
 KIRSEY, Debra J., Clerk-Typist, Employ'm't & Placem't, NCR
 KNEGERIS, Gunars, Electronics Tech, Everglades NP
 LeBLANC, Gloria L., Accounts Maintenance Clerk, Gulf Islands NS
 LEVIN, Steven G., Park Tech, Independence NHP
 LUCAS, Gary O., Laborer, Shenandoah NP
 MALDONADO, Rafael T., Public Info Spec, Gateway NRA
 MILLER, Terry R., Park Tech, Cuyahoga Valley NRA

MOONEY, Phyllis P., Clerk-Typist, Indiana Dunes NL
 MOYER, Lynwood L., Laborer, Shenandoah NP
 MURGOLA, Madeline C., Clerk-DMT, Everglades NP
 OLSON, Gordon C., Park Tech, Professional Services, NCR
 OTT, Eugene M., Park Tech, Lyndon B. Johnson NHS
 PENNINGTON, James C., Sanitary Engineer, Yellowstone NP
 PLOWMAN, Earl C., Engineering Equipm't Operator, Sleeping Bear Dunes NL
 POTTER, Charles J., Maintenance Worker Foreman, Glacier NP
 POWELL, Eloise A., Personnel Clerk/Assist, Fire Island NS
 PRINTZ, James G., Laborer, Shenandoah NP
 RADCLIFFE, Gary R., Mining Engineer, Operations, WRO
 REYNOLDS, David W., International Cooperation Spec, WASO
 ROSE, Nancy J., Park Tech, Independence NHP
 RYAN, Flora C., Clerk-Typist, North Cascades NP
 SMITH, Geraldine, Program Analyst, Programming & Budget, WASO
 SUAREZ, Rod M., Supv Park Tech, Chesapeake & Ohio Canal NHP
 TAYLOR, Larry G., Park Tech, Prince William Forest Park
 TENNEY, Michael L., Park Tech, Prince William Forest Park
 TREMBLAY, Barry D., Staff Accountant, Administration, NARO
 VEGA, Marianela, Clerk-Typist, Congressional Liaison, WASO
 WASHINGTON, Clarence O., Painter Helper, Boston NHP
 WHITE, Kenneth D., General Engineer, Construction Contracts, DSC
 WIEDERHOLD, Helen B., Clerk-Steno, Chesapeake & Ohio Canal NHP
 WILBRAHAM, Robert V., Park Tech, Independence NHP
 WOODS, James C., Biologist, Padre Island NS

New places

ALBRIGHT, John N., Historian, MA/NA Team, DSC, to Same, Professional Services, RMRO
 ARMSTRONG, Kenneth E., Park Tech, Carlsbad Caverns NP, to Same, Bandelier NM
 BARTLETT, Susan E., Personnel Mgmt Spec, Natchez Trace Pkwy, to Same, Great Smoky Mountains NP
 BILLER, Thomas S., Park Tech, Golden Gate NRA, to Same, Point Reyes NS
 BROOKS, Gregory P., Park Tech, Hatteras Island, to Same, Richmond NBP
 CARTER, Alex R. Jr., Environmental Specialist, NC Team, DSC, to Same, Special Programs, DSC
 CHAFFEE, Stephen N., Park Tech, Independence NHP, to Supv Park Tech, Lincoln Home NHS
 CLARK, Larry D., Supv Park Ranger, Olympic NP, to Same, Bighorn Canyon NRA
 DICKENSON, Thomas F., Personnel Assist, Statue of Liberty NM, to Personnel Mgmt Spec, Everglades NP
 FERNANDERS, Thomas E. Jr., Mail Clerk, Transportation, NCR, to Fiscal Services Clerk, NCR
 GORMAN, James, Park Tech, Canyon De Chelly NM, to Same, Wupatki NM

GUSE, Neal G. Jr., Resources Mgr, Natural Resources Mgmt, WASO, to Park Mgr, SERO
 HARDGROVE, Mark R., Grounds Maintenance Foreman, NCR, to Tractor Operator Foreman, Valley Forge NHP
 HEDREN, Paul L., Historian, Big Hole NB, to Supv Park Ranger, Golden Spike NHS
 KING, Phyllis L., Personnel Staffing & Employee Rel Spec, Big Cypress Land Acquisition Office, to Personnel Mgmt Spec, Grand Canyon NP
 KRAMBRINK, John A., Park Ranger, Sequoia NP, to Supv Park Ranger, Mount Rainier NP
 LARSON, William A., Supv Park Ranger, Lake Mead NRA, to Park Ranger, Mount Rainier NP
 MAY, Larry A., Environmental Spec, PN/W Team, DSC, to Supv Environmental Spec, Special Programs, DSC
 MAYO, Sally L., Clerk-Steno, Park System Mgmt, RMRO, to Sec, PN/W Team, DSC
 OLSON, Roger D., Supv Park Ranger, White Sands NM
 PARO, Jerry D., Park Tech, Big Bend NP, to Maintenance Worker, Olympic NP
 PHILLIPS, George S., Park Ranger, Bighorn Canyon NRA, to Same, Glen Canyon NRA
 PISANI, Sarah E., Park Ranger, Gateway NRA, to Supv Park Ranger, Home of FDR NHS
 RICHIE, David A., Park Mgr, Appalachian National Scenic Trail, to Same, International Affairs Div, WASO
 RISTAU, Toni K., Environmental Engineer, MW/RM Team, DSC, to Same, Special Programs Div, DSC
 RIVERA, Jesse, Supv Park Ranger, White Sands NM, to Same, Yellowstone NP
 SAUNDERS, J. Farrell, Park Tech, Blue Ridge Pkwy, to Lead Park Tech, De Soto NM
 SCHIPPLECK, John L., Supv Park Ranger, Lehman Caves NM, to Park Ranger, Delaware Water Gap NRA
 SHORT, Ernestine L., Park Tech, Employee Devel & Training, NCR, to Supv Park Tech, Interp Recreation & Resource Mgmt, NCR
 SMITH, Edward P. Jr., Supv Park Ranger, Cape Cod NS, to Same, Crater Lake NP
 SPRINKLE, Joe E., Supv Realty Spec, Fredericksburg Land Acquisition Office, to Same, Appalachian Trail Land Acquisition Office
 TOMS, Albert L., Maintenance Worker, Piedmont District, NCR, to Same, Antietam NBS
 WAHEED, Dennis, Utility System Repairer/Operator Helper, Yosemite NP, to Maintenance Worker, Fort Clatsop NM

BEZY, John V., Park Ranger, Lake Mead NRA, to Supv Park Ranger, Bryce Canyon NP
 BUTTERWORTH, Stephen E., Park Ranger, Saratoga NHP, to Supv Park Ranger, Olympic NP
 CHRISTENSEN, Carl S., Park Ranger, Ranger Activities & Protection, WASO, to Supv Park Ranger, Gulf Islands NS
 GALLAHER, James A., Engineering Equipm't Operator, Buffalo NR, to Engineering Equipm't Operator Foreman, Grand Teton NP
 GARDINER, William H., Park Ranger, Curecanti NRA, to Supv Park Ranger, Badlands NM
 GRAY, John L., Park Tech, JNEM NHS, to Same, Fort Clatsop NM
 GRETTEBERG, Zandra B., Admin Officer, Coulee Dam RA, to Same, Redwood NP

GRIEGO, Robert, Admin Assist, Administration, RMRO, to Same, Mount Rainier NP
 GROCHOW, Adell D., Clerk-Steno, Mgmt & Operations, PNRO, to Park Tech, Rocky Mountain NP
 KLIMA, Richard W., Park Tech, Manhattan Sites, to Same, Morristown NHP
 LESTER, William L., Park Ranger, Olympic NP, to Supv Park Ranger, North Cascades NP
 LIPPAI, Istvan, Civil Engineer, MA/NA Team, to Same, MW/RM Team, DSC
 MANZER, Fred L., Maintenance Mechanic, Craters of the Moon NM, to Carpenter, Olympic NP
 MARTINEZ, William M., Maintenance Mechanic Foreman, Bandelier NM, to Same, Grand Canyon NP
 MATSUO, Patsy M., Admin Clerk, Hawaii Volcanoes NP, to Supv Admin Tech, Hawaii Volcanoes NP
 McCHRISTIAN, Douglas C., Supv Park Ranger, Fort Laramie NHS, to Park Ranger, Operations, SWRO
 McGINNIS, David E., Park Ranger, Andersonville NHS, to Supv Park Ranger, Whitman Mission NHS
 MUELLER, Gordon A., Park Tech, Lincoln Home NHS, to Biological Tech-Fisheries, Ozark NSR
 OWENS, George W., Motor Vehicle Operator, Glen Canyon NRA, to Engineering Equipm't Operator, Glen Canyon NRA
 PAGE, Cheri A., Clerk-Typist, Big Bend NP, to Park Tech, Big Bend NP
 PEACOCK, Ross G., Motor Vehicle Operator, Sequoia NP, to Engineering Equipm't Operator, Petrified Forest NP
 RAMETTA, Francis T., Park Tech, Interp Recreation & Resource Mgmt, NCR, to Park Ranger, Great Smoky Mountains NP
 ROSE, Larry L., Supv Park Ranger, Redwood NP, to Same, Pinnacles NM
 SMITH, Gary D., Supv Park Ranger, Bryce Canyon NP, to Same, Great Sand Dunes NM
 SPENCER, Donald L., Park Ranger, Fire Island NS, to Same, Lake Mead NRA
 SWIFT, Bryan J., Park Ranger, Grand Canyon NP, to Same, Yosemite NP
 TERRY, Ronald A., Park Tech, JNEM, to Same, Hot Springs NP
 WAGNER, Howard R., Landscape Architect, MW/RM Team, DSC
 WARSHEFSKI, Gary W., Park Tech, NCP-Central, to Same, Fire Island NS
 WATERS, Rodger D., Staffing Clerk, Administration, RMRO, to Personnel Assist, Ozark NSR

AGEE, James K., Plant Ecologist, Resource Mgmt & Planning, WRO, to Research Biologist, Planning & Resource Pres, PNRO
 BERNTHAL, Christine E., Admin Clerk, Fort Clatsop NM, to Purchasing Agent, Indiana Dunes NL
 COURT, James V., Park Mgr, Grand Teton NP, to Same, Custer Battlefield NM
 DE ST. CROIX, Jean-Paul, Park Tech, Redwood NP, to Same, Mount Rainier NP
 DOVE, Michael R., Specifications Clerk, Professional Support, DSC, to Statistical Assist, Special Programs, DSC
 ERICKSON, Jon Webster, Park Tech, Petrified Forest NP, to Same, Hawaii Volcanoes NP
 EVANS, David E., Park Tech, Carlsbad Caverns NP, to Same, White Sands NM

FORBES, Mark E., Supv Park Ranger,
Yosemite NP, to Park Ranger, Crater Lake NP
FRANKEL, Leah S., Park Ranger, Grand Teton
NP, to Supv Park Ranger, Sleeping Bear
Dunes NL
GARRETT, Dean R., Park Ranger, Statue of
Liberty NM, to Supv Park Ranger, Allegheny
Portage Railroad NHS
GERMERAAD, Douglas W., Park Tech,
Natchez Trace Pkwy, to Same, Dinosaur NM
HAMILTON, Chester Tee, Supv Park Ranger,
Minute Man NHP, to Park Ranger, Lake
Mead NRA
HEGEMAN, Carol A., Park Tech, Lincoln
Home NHS, to Same, Gettysburg NMP
JOHNS, John E., Park Tech, Great Smoky
Mountains NP, to Supv Park, Great Smoky
Mountains NP
JOHNSON, Patti J., Clerk-Typist, Professional
Support, DSC, to Same, MW/RM Team,
DSC
JOHNSON, Wilma A., Procurement Assist,
Personnel Office, WASO, to Contract
Administrator, General Services, WASO
JONES, Richard B., Park Tech, Appomattox
Court House NHP, to Park Ranger, Bighorn
Canyon NRA
LENO, Janette M., Sec, PN/W Team, DSC, to
Same, Special Programs, DSC
LOVEDAHL, Marshall O., Laborer, Great
Smoky Mountains NP, to Maintenance
Worker, Blue Ridge Pkwy
LUTHI, Dixie L., Admin Clerk, Florissant Fossil
Beds NM, to Admin Tech, Curecanti NRA
MACKINTOSH, Barry, Historian, Cultural
Resources Mgmt, WASO, to Same,
Professional Services, NCR
MILLER, Stephen T., Supv Environmental
Education Spec, Branch of Community
Services, NCR, to Supv Park Ranger, El
Morro NM
OZMENT, Robert P., Park Tech, Padre Island
NS, to Park Ranger, Lake Mead NRA
PASKOWSKY, Michael P., Museum Tech,
Museum Services, NFC, to Park Ranger,
Interpretive Planning, HFC
PEPPER, James R., Legislative Affairs Spec,
WASO, to Staff Assist, WASO
ROTH, Terry T., Park Tech, Boston NHP, to
Same, Mammoth Cave NP
SHIRLEN, James D., Park Ranger, Apostle
Islands NL, to Same, Lake Mead NRA
TUCKER, James Clifford, Park Tech, Golden
Gate NRA, to Supv Park Tech, Yosemite NP
WILEY, Naomi L., Program & Budget Assist,
SWRO, to Budget & Finance Assist, Padre
Island NS

Out of the traces

ANDERSON, Tyree, Professional Services,
NCR
ATCHISON, Vera E., Sec, Rocky Mountain
Region
BAIR, Janet L., Clerk, Administration, PNRO
BONNELL, Peter W., Park Ranger, Lake Mead
NRA
BRATCHER, Sharryn M., Sec, Resource Mgmt
& Planning, WRO
BROWN, Melvin C., Maintenance Worker,
Grounds Maintenance, NCR
BYRNES, Mary A., Clerk, Fire Island NS
CANNON, Lewis D., Tractor Operator, Capitol
Reef NP
CARDEN, Marjorie S., Personnel Clerk,
Administration, SERO
CASTELLANOS, Roberto, Architect, NC
Team, DSC

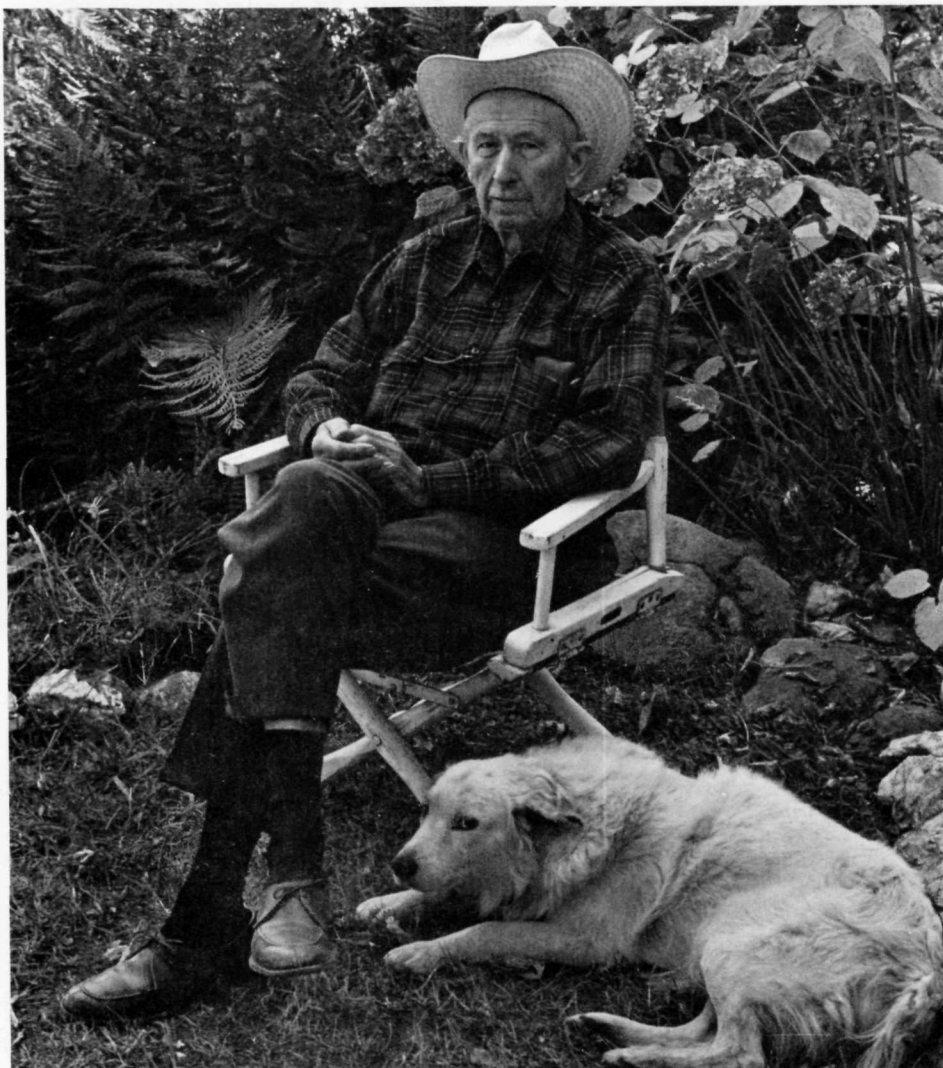
DULANEY, Deborah A., Staffing Clerk,
Employment & Placem't, NCR
FACTEAU, Susan J., Clerk-Typist, Big Cypress
Land Acquisition Office
HACKENSMITH, Perry L., Janitor, Lincoln
Boyhood NM
HART, Richard T., Park Mgr, Custer Battlefield
NM
HEFFNER, Rebecca F., Clerk, Harpers Ferry
NHP
LISTER, Robert H., Supv Archeologist,
Southwest Cultural Resources Center
McBRIDE, Nancy G., Sec, Harpers Ferry NHP
MURNANE, Daniel V., Clerk-Typist, Glacier
NP
ORR, Patricia A., Admin Clerk, Ozark NSR
PACKARD, Hal W., Supv Park Ranger,
Sequoia NP
POLLETT, John D., Pipefitter, Golden Gate
NRA
ROBERTS, Jennifer A., Sewing Machine
Operator, Harpers Ferry NHP
SHAW, John R., Signpainter, Blue Ridge Pkwy
SHILO, Michael T., Janitor, Boston NHP
STURM, Adella L., Personnel Clerk, Fire Island
NS
TIBBETTS, Deborah A., Clerk-Typist, Katmai
NM
TOOGOOD, Anna Cox, Historian, DSC
TROWELL, Margaret F., Clerk-DMT, Park
Operations, SERO
WEBER, Anthony J., Engineering Equipm't
Operator, Gateway NRA

ALICE, Lawrence B., Electrician, Mount
McKinley NP
CARTER, Henry B., Maintenance Worker,
Golden Gate NRA
CLAY, Monroe A., Park Ranger, NCR
DAVIS, Wanda B., Clerk-Typist, Park
Operations, SERO
DEFREECE, James F., Supv Park Tech,
Independence NHP
ELLIS, Brenda F., Clerk-Typist, Administration,
SERO
ESQUIVAL, Linda K., Clerk-Typist, Chicago
Field Office
FIELDS, Ronald Kenwood, Park Tech, Golden
Gate NRA
HOBBS, Douglas K., Park Ranger, Cumberland
Gap NHP
JOHNSON, Duane C. I., Admin Officer,
Jefferson Nat'l Expansion Memorial NHS
JOHNSON, Ronald, Historian, Professional
Services, RMRO
KIRYAKAKIS, James G., Landscape Architect,
NC Team, DSC
KRUG, Mary M., Public Information Officer,
NCR
LEHANE, Coleen C., Clerk-Typist, Golden Gate
NRA
LIKOUUDIS, Paul A., Park Tech, NCR-Central
MARVEL, Cynthia L., Clerk-Typist,
Administration, RMRO
MOELLER, Joanne, Clerk-Typist, Big Cypress
Land Acquisition Office
PETERZELL, Howard E., Supply Clerk,
Contracting & Prop Mgmt, MARO
RIDDLE, Jennings E., Roads & Trails Foreman,
Shenandoah NP
RIVERA, Ruben B., Accounts Maintenance
Clerk, Gateway NRA
ROBEY, Charles F., Machinist Leader, Metal
Crafts Shop, NCR
ROLON-TORRES, Leonardo, Painter, San Juan
NHS

ROMERO, Hazel, Clerk-Typist, Southwest
Cultural Resources Center
SEEGMILLER, Wendell G., Maintenance
Mechanic Foreman, Grand Canyon NP
SHOEB, Mohammad, Structural Engineer, NC
Team, DSC
SPICE, Martha B., Supv Park Ranger,
Greenbelt Park
SPROUT, Raymond C., Engineering Equipm't
Operator, Great Smoky Mountains NP
STAROBIN, Sidney S., Statistician, Special
Programs, DSC
STITTGEN, Diane O., Park Tech, Yosemite NP
STUDDS, Marilyn H., Clerk-Typist, Big
Cypress Land Acquisition Office
THOMPSON, Milton E., Historian, Jefferson
National Expansion Memorial NHS
THORNE, Cindy C., Clerk-Typist, Br Class &
Compen, NCR
TROST, Larry C., Electrician, Kennedy Center
Support Group
VICK, Kenneth R., Park Tech, Klondike Gold
Rush Land Acquisition Office
WALLACE, Charles R., Supply Clerk, Contract
& Prop Mgmt, PNRO
WILLIAMS, Jacob A., Procurement Clerk,
Lake Mead NRA
ANDROSKO, Joseph Thomas, Grounds
Maintenance Foreman, NCR
BEFFA, Patricia V., Clerk, JNEM NHS
BURKMAN, Bruce W., Laborer, Mount Rainier
NP
CARLISLE, Mary E., Park Tech, Lincoln
Boyhood NM
CLEMENTS, Darla A., Sec, Operations,
MWRO
COLEMAN, Michael A., Laborer, Grounds
Maintenance Group
DAVIS, Larry G., Appraiser, Operations, WRO
FARMER, Alfred J. Jr., Electrician,
Maintenance, NCR
FERNSTRUM, Cheryl, Clerk-Typist, Isle
Royale NP
FORD, Allan R., Personnel Clerk,
Administration, RMRO
GIFFIN, Joan Lee, Architect, WM/RM Team,
DSC
HARRIS, Alfred G. II, Clerk, Finance, WRO
HASTINGS, Frankie M., Procurement Clerk,
Western Archeological Center
HORTON, Susan E., Park Tech, Big Bend NP
HUDSON, Jean B., Clerk, Everglades NP
KISNER, A. Faye, Clerk, Hot Springs NP
LADD, Christopher G., Deckhand, Golden Gate
NRA
MASSIE, Brenda S., Sec, Fredericksburg &
Spotsylvania Btld Mem NMP
MEINHART, Steward J., Engineering Equipm't
Operator Leader, Gettysburg NMP
MIMS, Frank, Laborer, Natchez Trace Pkwy
O'NEILL, William J., Park Tech, Independence
NHP
PEARSON, Tom, Operator, Filter Plant, Lake
Mead NRA
PELOQUIN, Jeanette, Clerk-Typist, Big Cypress
Land Acquisition Office
PHILLIPS, Leland D., Engineering Equipm't
Operator Leader, Grand Teton NP
POTTER, Jonn M., Clerk, Yosemite NP
RUDY, Sharon I., Personnel Clerk, Harpers
Ferry Center
SATTERLEE, Thomas A., Laborer,
Whiskeytown NRA
STOTLER, Ronnie D., Janitor, Harpers Ferry
NHP
THELEN, Kyran D., International Cooperation
Spec, WASO

Deaths

Everett Logan Kirk



Everett Logan Kirk, a park ranger until his retirement at Sequoia National Park, Calif., died May 13 in Long Beach, Calif. He was 85.

A native of Porterville, Calif., he moved with his family to Exeter, Calif., in 1896. He served in both the Spanish American and First World Wars and worked for the Federal Government and the Gill Cattle Co., before becoming a park ranger.

Mr. Kirk was preceded in death by his wife, Pansy, who died in 1962. He is survived by two step-daughters, Evelyn Stiltz and Muriel Kenwood of Three Rivers, Calif.; three sisters and seven grandchildren.

Military graveside services were held for him at Exeter Cemetery May 16.

Ethel L. Meinzer

Ethel L. Meinzer, 83, an employee of the National Park Service for 18 years who became the first female ranger at Scotts Bluff National Monument, Nebr., in 1942, died on March 29 in Phoenix, Ariz. She suffered a serious stroke in 1967 and had been living in a nursing home.

After the death of her husband, Victor H. Meinzer, Mrs. Meinzer received a seasonal appointment as a stenographer at Mesa Verde National Park, Colo., in November 1938. From Scotts Bluff she was transferred in May 1943 to Rocky Mountain Park, Colo. In June 1945 she was appointed Personnel Clerk at Glacier National Park, Mont. and retired from that position in Dec. 1956 because of declining health.

She was formerly President of the Woman's

Federated Club, Mancos, Colo.; Past Matron and 50-year member of Chapter 76, Order of the Eastern Star, Mancos; a 50-year member of P.E.O. and a member of its Chapter AS, Phoenix. She was also a member of the Mountain View Church of Christ in Phoenix.

Her two nephews, William H. and Lorne W. West, sons of Mrs. Lorna W. West of Lubbock, Tex., worked summers on the trail crews while Mrs. Meinzer was employed at Glacier. Both subsequently entered the U.S. Air Force. Lorne West is currently a park forester in Yosemite National Park. Mrs. West's sister-in-law, Margaret J. Warren, also worked in the Park Service offices in Glacier and later in Omaha, Nebr., until her retirement as Fiscal Accounting Clerk, MWRO, in 1968.

Burnett Sanford

Burnett Sanford, "Sandy" to his many friends, died in Nevada City, Calif., May 17 after a brief illness. He was a graduate of both Stanford University and the University of California and began his long career as a professional forester with the Forest Service in California. After many years as a Government forester, a forester with a lumber company, a consulting forester, and as a fire control planner with the California Division of Forestry, Sandy began working with the Park Service as regional forester of Region Four. This was in 1933 when the Regional Offices were concerned with the Civilian Conservation Corps work in the State Parks. Sandy remained with Region Four Office until his retirement in 1954. Sandy's wife, Daisy preceded him in death by several months.

Isabelle Wolfe Cahalane

Isabelle Wolff (Porter) Cahalane, wife of Victor H. Cahalane, died at her home in Westerlo, N.Y., on April 17 of a myocardial infarction. Though she had not been in good health for some time, her death was sudden and wholly unexpected.

Mrs. Cahalane, born in St. Johnsbury, Vt., in 1903, was a high school teacher when she and Vic, also a high school teacher, met in 1924; and they were married in 1928. She started her Park Service "career" at Wind Cave National Park in 1934; the Cahalanes moved to Washington the next year and remained there until Vic left the Service in 1955 to become assistant director of the New York State Museum in Albany. They had one daughter, Margaret, now Mrs. James C. Hayes, of Lafayette, Ind.

Friends of the Cahalanes can reach Vic at the farm that he acquired when he left his New York State employment. The address is Derbyshire Road, Clarksville, N.Y. 12041.

Hardy H. Culliver

Hardy H. Culliver, 76, who retired in 1935 as Bath House Manager at Hot Springs National Park, Ark., died in April in a Little Rock hospital.

Culliver was also a retired employee of California State College. He was active in the Masonic Order as a member and past master of Sumpter Lodge 419, and a member of Yorkrite, of Almaleikah Shrine Temple in Los Angeles, and of Eastern Star Chapter 69. He was also a member of the First Church of God. He was a veteran of World War II.

Survivors include his wife, Jennie Lawler Culliver, a son, Allan L. Culliver of Cherokee, Okla.; a daughter, Mrs. Mary Jo Willmon of Kansas City, Mo.; a sister, grandchildren, nieces and nephews.

Masonic services were conducted and honorary pallbearers included employees of Hot Springs, National Park, California State College, and several Masonic organizations. The home address is 535 Summer Street, Hot Springs, Ark. 71901.

Lee L. Coleman

Lee L. Coleman, who retired from Yellowstone National Park as a supervisory park ranger in 1961, died in Billings, Mont., recently, at age 74.

For more than 30 years, beginning in 1930, Lee served assignments at almost every ranger station in the park. A keen observer and self-reliant mountain man, he had many traits of the early day adventurers and explorers. By horseback in summer and by skis in winter, he traversed during his ranger years practically every wilderness area of the park. He was the only ranger of the time who used 4-inch wide and 10-foot long skis. For this he received a bit of ribbing. But when the snow was soft or the crust thin, he skied right around his partner and slithered down the mountains where others wallowed. He never carried a watch, but, on cloudless days, he could give the time to an accuracy of 20 minutes.

As fire boss on large wilderness forest fires, Lee had a special way about him that calmed and soothed the weary firefighter and made for good morale around the fire camp.

He also had a unique manner of dealing with park visitors whom he had arrested for violation of regulations. A typical case was one in which he arrested a speeder from the Midwest. At the trial where the victim pleaded guilty and was fined \$25, it turned out that Lee and the visitor had become quite well-acquainted and Lee had furnished him with valuable information and suggestions about the park and the best places to camp. The visitor told the U.S. Commissioner that he had never been treated more fairly and that it was a pleasure to have been arrested by Ranger Coleman.

While in Yellowstone, he took a deep interest in the western Indians and artifacts and became a member of the Archeological Society.

Lee was born in Forsyth, Mont., and was graduated from the University of Wyoming. In Yellowstone, he met and later married Phyllis S. Sampson. Upon Lee's retirement in 1961, they retired to a home at 3021 Zimmerman Trail, Billings, Mont., 59102.

Survivors include his wife; a son Michael Coleman of Bigfork, Mont.; a daughter Gail Matthews of Los Gatos, Calif., and five granddaughters.

Fred Vanous

Fred Vanous, retired supervisory park ranger at Richmond National Battlefield Park, Va., died June 26. He was 79.

Born in Milwaukee, Wis., Mr. Vanous lived in the Chicago area before joining the Park Service in the 30's at Shiloh National Military Park, Tenn. During his 32-year NPS career, he also served at Chickamauga and Chattanooga National Military Park, Ga.-Tenn.

He retired from Richmond Battlefield in 1967.

He is survived by his wife, Mrs. Marjory T. of the home at 3505 Chamberlayne Ave., Richmond, Va. 23227; a son, Col. Fred T. Vanous of the United States Marine Corps in Quantico, Va., and two grandsons.

Funeral services were held at Tews Funeral Home, near Chicago and burial was at Cedar Park Masonic Cemetery in Chicago.

Sam Mendlen

Sam Mendlen, for many years a naturalist at Everglades National Park, Fla., died May 15 in Eau Gallie, Fla., where he had lived since retirement.

Sam and his wife, Ruth, came to work for NPS when both were over 50 years of age. Sam was a perpetual seasonal naturalist, an arrangement that allowed him to work as much as his health would permit.

Ruth was a park naturalist at Everglades for many years.

In a letter to the COURIER, Mary Belinky wrote: "Both were much beloved by staff and visitors alike. Sam was perhaps the best interpreter with kids the NPS had at the time. There was so much goodness in him, such a love both for nature and children—that it just radiated."

Mr. Mendlen is survived by a daughter, Darci, in Florida, and a son, Rick, in San Diego.

Edward Brewster

Edward "Eddie" Brewster died at Whitefish, Mont., May 21 at the age of 69. Eddie came to Glacier National Park from Fort Belknap, Mont. with his father and mother when he was a very small boy. His father, Horace Brewster, was an experienced stockman, and Major Logan brought him to Glacier when he came to be the park's first park superintendent.

Horace, it is believed, was the first park ranger for the new park, and Eddie spent his boyhood and early youth in remote ranger stations and at park headquarters. He was a star athlete at Columbia Falls High School and worked as a young man as a seasonal ranger and as a clerk for the old Belton Mercantile Company. Eddie with his first wife, Dorothy, opened Eddie's Cafe and Grocery at Apgar in the park in the early 1940s, and Eddie continued to operate this establishment until his retirement in 1972. It is now owned and operated by his daughter Donna and son Neil. Everyone who has been associated with Glacier National Park since establishment in 1910 knew Eddie Brewster, and his passing will bring sorrow to many.

Fans of Charlie Russell, the cowboy artist, will be interested to learn that Eddie's father, Horace Brewster, was the foreman of the Circle C Ranch at Judith Gap, Mont., and gave Charlie his first

job as a Montana cowboy. At Charlie's funeral in 1926, Horace rode Charlie's horse behind the horse-drawn hearse in the procession to the cemetery.

Thomas B. Phillips

Thomas B. Phillips, a 30-year NPS veteran, died May 12 after a long illness. He was 60.

Mr. Phillips joined the Park Service in 1944 and spent his entire career with National Capital Parks. He retired in 1973 as a supervisory wage and classification specialist. He had had a heart condition for many years.

He is survived by his wife, Louise, of the home at 11403 Monterrey Drive, Silver Spring, Md. 20902; three sons, Brian, Alan, and Brent, and two daughters, Mrs. Beverly Rudolph, and Mrs. Andrea Garth. Also surviving are a brother Arthur, and two sisters, Doris Livingston and Anna Marie.

A memorial service was held for Mr. Phillips at Resurrection Lutheran Church, where he was a choir leader.

Burial was at Mountain View Cemetery in Union Bridge, Md.

Pauline Gadsby

Belatedly, we report the death last September of Pauline (Polly) Gadsby, widow of J. Herbert (Doc) Gadsby, at her home in Sarasota. Her death came suddenly and unexpectedly; she was found in the living room of her home in a position of repose, as though she were sleeping.

Polly was known to and well liked by hundreds of Park Service employees; she was an outgoing and friendly person and a wonderful hostess.

Correction

On page 10, Vol. 1, No. 7, May edition of the COURIER contains a misleading statement. The article on Indiana Dunes National Lakeshore states that the National Park Service has offered to pay the city \$150,000 for its ownership. This is incorrect. The city has offered the property to NPS for \$150,000.

—The Editor.



U.S. Department of the Interior
Secretary Cecil D. Andrus
National Park Service
Director William J. Whalen



Deputy Director Ira J. Hutchison
Chief, Office of Communications, Priscilla R. Baker
Chief, Publications and Public Inquiries, Grant W. Midgley

Editor
Assistant Editor
Staff Writer
Alumni Editor
Artist
Circulation

Naomi L. Hunt
Daniel S. Hughes
Ronnie Spiewak
James F. Kieley
Glenn Snyder
Sylvia Johnson

Department of the Interior, National Park Service, Washington, D.C. 20240
Room 3416, Interior Building

Tel. (202) 343-4481

Secretary Andrus relights Gettysburg peace light

For the Gettysburg park staff, things have quieted down after back-to-back visits by Secretary Cecil D. Andrus and President Jimmy Carter (see page 1).

First came the Secretary on July 1 to relight the Eternal Light Peace Memorial that has been redesigned as an energy-saving electric lantern.

"This ceremony is another important event in the history of Gettysburg," he said in a speech to the crowd of 2,500 who gathered on the grass at dusk. "It is symbolic of adjustments we must make nationwide if our country is to maintain its natural resources base and protect its economic vitality."

The Secretary praised the local citizens and business leaders who spearheaded the drive to provide a new light for the memorial that was originally dedicated in 1938 by President Franklin D. Roosevelt.

The natural gas flame that had burned atop the Peace Light was extinguished by the Park Service in 1973 in response to a Government-wide call to conserve energy.

Through donations by businessmen and citizens of Gettysburg, the light was redesigned in a way that will use only 3 percent as much energy. An electrically stimulated sodium vapor lamp within

the lantern shines out through translucent panels.

To support the borough's efforts to relight the famous memorial, NPS installed an underground power line to the new lantern, provided design counsel and will pay the modest electric bill.

Secretary Andrus took a two-hour tour of the battlefield before attending a reception given by the Gettysburg Area Chamber of Commerce. Among those attending the reception were Regional Director Richard L. Stanton, Congressman William F. Goodling, State Legislator Kenneth J. Cole and Frank E. Masland, Jr.

Photos by Richard Frear.

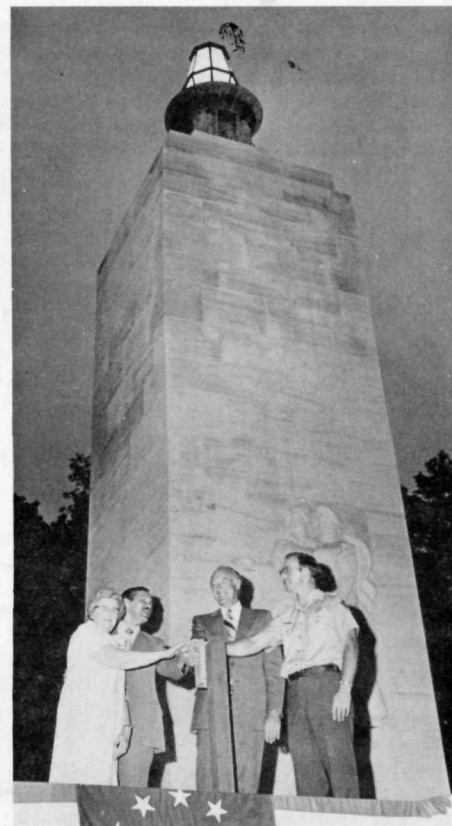


Secretary Andrus (second from right) chats with park interpreter Beth Gutsche during a tour of the battlefield prior to relighting the Eternal Light Peace Memorial on July 1. Mrs. Andrus smiles behind dark glasses (center) while Superintendent John R. Earnst stands at right.



Secretary Andrus is briefed by park interpreter Robert Prosperi (far right) at the Virginia Memorial to Confederate Gen. Robert E. Lee at the site of Lee's headquarters during the third day of the Battle of Gettysburg. Superintendent Earnst stands next to Prosperi. Left from Andrus: Mrs. Andrus, Robert Monahan, member of the Gettysburg Area Chamber of Commerce and Mrs. Monahan.

☆ U.S. GOVERNMENT PRINTING OFFICE: 1978 — 720-402/5



Secretary Andrus beams after pushing the button to relight the Gettysburg "Eternal Light" after 5 years of darkness. (Left to right) Mrs. Paul Roy, widow of the late Paul Roy, publisher of the Gettysburg Times, who spearheaded the drive to build the Memorial in 1938; Ronald Nicodemus, present publisher of the Gettysburg Times; Mr. Andrus; and Superintendent Earnst.

U.S. Department of the Interior
National Park Service
Washington, D.C. 20240

Official Business
Penalty for Private Use \$300

Postage and Fees Paid
Third Class
Bulk Rate
Int. 417

