

UNITED STATES  
DEPARTMENT OF THE INTERIOR  
HUBERT WORK, SECRETARY  
NATIONAL PARK SERVICE  
STEPHEN T. MATHER, DIRECTOR



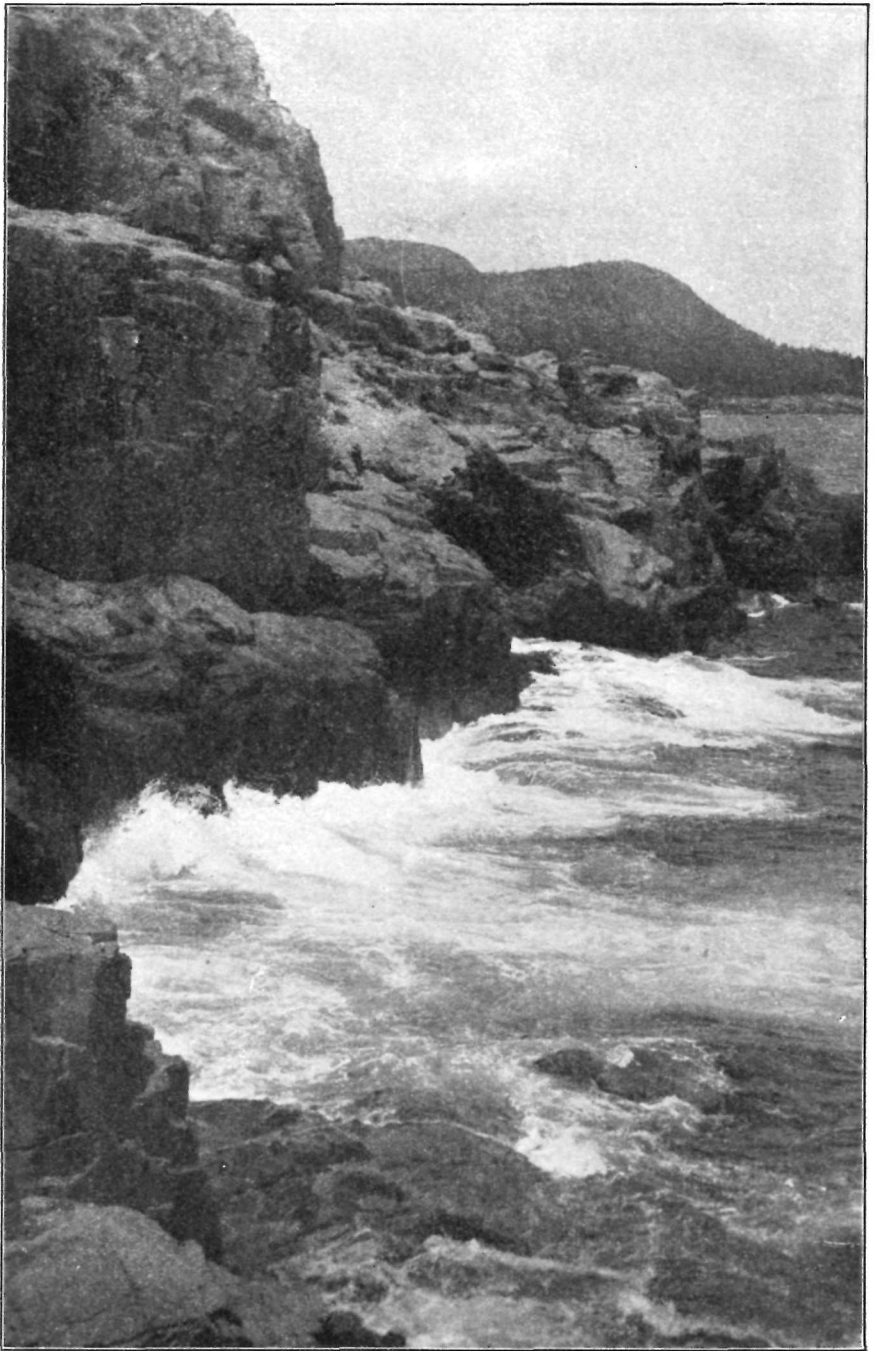
RULES AND REGULATIONS

# LAFAYETTE NATIONAL PARK



SIEUR DE MONTS SPRING

Open all the Year  
Summer Season June 15 to October 15



THE OCEAN FRONT AT OTTER CLIFF

# THE NATIONAL PARKS AT A GLANCE

[Number, 19; total area, 11,710 square miles]

National parks in order of creation	Location	Area in square miles	Distinctive characteristics
Hot Springs..... 1832	Middle Arkansas.....	1½	46 hot springs possessing curative properties—Many hotels and boarding houses—19 bath-houses under Government supervision.
Yellowstone..... 1872	Northwestern Wyo- ming.	3,348	More geysers than in all rest of world together—Boiling springs—Mud volcanoes—Petrified forests—Grand Canyon of the Yellowstone, remarkable for gorgeous coloring—Large lakes—Many large streams and waterfalls—Vast wilderness, greatest wild bird and animal preserve in world—Exceptional trout fishing.
Sequoia..... 1890	Middle eastern Cali- fornia.	604	The Big Tree National Park—Scores of sequoia trees 20 to 30 feet in diameter, thousands over 10 feet in diameter—Towering mountain ranges, including Mount Whitney, highest point in continental United States—Startling precipices—Deep canyons.
Yosemite..... 1890	Middle eastern Cali- fornia.	1,125	Valley of world-famed beauty—Lofty cliffs—Romantic vistas—Many waterfalls of extraordinary height—3 groves of big trees—High Sierra—Waterwheel Falls—Good trout fishing.
General Grant..... 1890	Middle eastern Cali- fornia.	4	Created to preserve the celebrated General Grant Tree, 35 feet in diameter—6 miles from Sequoia National Park.
Mount Rainier..... 1899	West central Wash- ington.	325	Largest accessible single peak glacier system—28 glaciers, some of large size—48 square miles of glacier, 50 to 500 feet thick—Wonderful sub-alpine wild flower fields.
Crater Lake..... 1902	Southwestern Oregon..	249	Lake of extraordinary blue in crater of extinct volcano—Sides 1,000 feet high—Interesting lava formations—Fine fishing.
Platt..... 1902	Southern Oklahoma...	1½	Many sulphur and other springs possessing medicinal value.
Wind Cave..... 1903	South Dakota.....	17	Cavern having many miles of galleries and numerous chambers containing peculiar formations.
Sullys Hill..... 1904	North Dakota.....	1½	Small park with woods, streams, and a lake—Is an important wild-animal preserve.
Mesa Verde..... 1906	Southwestern Colo- rado.	77	Most notable and best preserved prehistoric cliff dwellings in United States, if not in the world.
Glacier..... 1910	Northwestern Mon- tana.	1,534	Rugged mountain region of unsurpassed Alpine character—250 glacier-fed lakes of romantic beauty—60 small glaciers—Precipices thousands of feet deep—Almost sensational scenery of marked individuality—Fine trout fishing.
Rocky Mountain... 1915	North middle Colo- rado.	378	Heart of the Rockies—Snowy range, peaks 11,000 to 14,250 feet altitude—Remarkable records of glacial period.
Hawaii..... 1916	Hawaii.....	186	Three separate areas—Kilauea and Mauna Loa on Hawaii; Haleakala on Maui.
Lassen Volcanic... 1916	Northern California...	124	Only active volcano in United States proper—Lassen Peak 10,460 feet—Cinder Cone 6,907 feet—Hot springs—Mud geysers.
Mount McKinley... 1917	South central Alaska..	2,645	Highest mountain in North America—Rises higher above surrounding country than any other mountain in the world.
Grand Canyon..... 1919	North central Arizona..	958	The greatest example of erosion and the most sublime spectacle in the world.
Lafayette..... 1919	Maine coast.....	12	The group of granite mountains upon Mount Desert Island.
Zion..... 1919	Southwestern Utah...	120	Magnificent gorge (Zion Canyon), depth from 1,500 to 2,500 feet, with precipitous walls—Of great beauty and scientific interest.

# The National Parks Portfolio

(FOURTH EDITION)

---

---

**Bound securely  
in cloth**

**One dollar**

**A** presentation of the national parks and national monuments in picture. The selection is from the best work of many photographers, professional and amateur. It contains nine chapters descriptive each of a national park, and one larger chapter devoted to other parks and monuments. 270 pages, including 310 illustrations.

---

---

¶ Sent postpaid, upon receipt of price in cash or money order, by the Superintendent of Documents, Government Printing Office, Washington, D. C.

# LAFAYETTE NATIONAL PARK

---

## A HISTORICAL SKETCH

Our national parks are areas of superlative scenery which are set apart and maintained by the Federal Government for the use and enjoyment of the people. They are the people's property; the Government, the people's agent and trustee.

Few as yet in number, but covering an extraordinary range of landscape interest, they have all, with a single exception, been formed by setting aside for park purposes lands already held in ownership by the United States and lie in the nationally younger regions of the country to the westward of the Mississippi.

The single exception is Lafayette National Park, occupying old French territory on the coast of Maine and created in 1919 from lands collected during the previous decade and presented to the Government. The name it bears commemorates the great events and splendid spirit—the spirit of humanity transcending national bounds—that marked inspiringly the period of its creation. The park is unique as a member of the national system in its contact with the ocean and inclusion of nationally owned coastal waters in its recreational territory.

Lafayette National Park lies surrounded by the sea, occupying as its nucleus and central feature the bold range of the Mount Desert Mountains, whose ancient uplift, worn by immeasurable time and recent ice erosion, remains to form the largest rock-built island on our Atlantic coast; "l'Isle des Monts deserts," as Champlain named it, with the keen descriptive sense of the early French explorers.

The coast of Maine, like every other boldly beautiful coast region in the world whose origin is nonvolcanic, has been formed by the flooding of an old and water-worn land surface, which has turned its heights into islands and headlands, its stream courses into arms and reaches of the sea, its broader valleys into bays and gulfs. The Gulf of Maine itself is such an ancient valley, the deep-cut outlet of whose gathered waters may still be traced by soundings between Georges Bank and Nova Scotia, and whose broken and strangely indented coast, 2,500 miles in length from Portland to St. Croix—a straight line distance of less than 200 miles—is simply an ocean-drawn contour line marked on its once bordering upland.

At the center of this coast, the most beautiful in eastern North America, there stretches an archipelago of islands and island-sheltered waterways and lakelike bays—a wonderful region—and at its northern end, dominating the whole with its mountainous uplift, lies Mount Desert Island, whereon the national park is located.

Ultimately it is intended that the park shall be extended to other islands in this archipelago and become, by the establishment of some simple house-boat system under the direction of the National Park Service, a water park as well as land one. For these are national waters, held by the United States in as absolute possession as its western forests and other public lands from which the great western parks were formed, and their recreational possibilities in connection with the park are boundless.

### THE STORY OF MOUNT DESERT ISLAND

Mount Desert Island was discovered by Champlain in September, 1604, 16 years and over before the coming of the Pilgrim Fathers to Cape Cod. He had come out the previous spring with the *Sieur de Monts*, a Huguenot gentleman, a soldier and the governor of a Huguenot city of refuge in southwestern France, to whom Henry IV—"le grand roi"—had intrusted, the December previous, establishment of the French dominion in America. De Monts's commission, couched in the redundant, stately language of the period, is still extant, and its opening words are worth recording, so intimate and close is the relation of the enterprise to New England history:

Henry, by the grace of God, King of France and of Navarre, to our dear and well-beloved friend the *Sieur de Monts*, gentleman in ordinary to our chamber, greeting: As our greatest care and labor is and has ever been since our coming to this throne to maintain it and preserve it in its ancient greatness, dignity, and splendor, and to widen and extend its bounds as much as may legitimately be done, We having long had knowledge of the lands and territory called Acadia, and being moved above all by a single-minded purpose and firm resolution We have taken, with the aid and assistance of God, Author, Distributor, and Protector of all States and Kingdoms, to convert and instruct the people who inhabit this region, at present barbarous, without faith or religion or belief in God, and to lead them into Christianity and the knowledge and profession of our faith and religion. Having also long recognized from the accounts of captains of vessels, pilots, traders, and others who have frequented these lands, how fruitful and advantageous to us, our States and subjects might be the occupation and possession of them for the great and evident profit which might be drawn therefrom, We, in full confidence in your prudence and the knowledge and experience you have gained of the situation, character, and conditions of the aforesaid country of Acadia from the voyages and sojourns you have previously made in it and neighboring regions, and being assured that our plan and resolution being committed to your care you will diligently and attentively, and not less valorously and courageously, pursue them and lead them to completion, have expressly committed them to your charge and do constitute you by these presents, signed by our hand, our lieutenant general, to represent our

Person in the lands and territory, the coasts and confines of Acadia, to commence at the fortieth degree of latitude and extend to the forty-sixth degree. And We order you throughout this territory as widely as possible to establish and make known our name and authority, subjecting to these and making obedient to them all the people dwelling therein, and by every lawful means to call them to the knowledge of God and the light of the Christian faith and religion.

De Monts, sailing in the spring of 1604, founded his first colony on an island in the tidal mouth of a river at the western entrance to the Bay of Fundy—"Baie Francoise" he named it, though the Portuguese name "Bahia Funda," Deep Bay, in the end prevailed—which two centuries later, in memory of it, was selected to be the commencement of our national boundary. While he was at work on this he sent Champlain in an open vessel with a dozen sailors to explore the western coast. A single, long day's sail with a favoring wind brought him at nightfall into Frenchmans Bay, beneath the shadow of the Mount Desert Mountains, and his first landfall within our national bounds was made upon Mount Desert Island in the township of Bar Harbor.

A few years later the island again appears as the site of the first French missionary colony established in America, whose speedy wrecking by an armed vessel from Virginia was the first act of overt warfare in the long struggle between France and England for the control of North America.

In 1688, seventy-odd years later, private ownership began, the island being given as a feudal fief by Louis XIV to the Sieur de la Mothe Cadillac—later the founder of Detroit and governor of Louisiana, who is recorded as then dwelling with his wife upon its eastern shore and who still signed himself in his later documents, in ancient feudal fashion, *Seigneur des Monts deserts*.

In 1713, Louis XIV, defeated on the battle fields of Europe, ceded Acadia—save only Cape Breton—to England, and Mount Desert Island, unclaimed by Cadillac, became the property of the English Crown. Warfare followed till the capture of Quebec in 1759, when settlement from the New England coasts began. To the Province of Massachusetts was granted that portion of Acadia which now forms part of Maine, extending to the Penobscot River and including Mount Desert Island, which it shortly thereafter gave "for distinguished services" to Sir Francis Bernard, its last English governor before the breaking of the revolutionary storm. Title to it was later confirmed to him by a grant from George III.

In September, 1762, Gov. Bernard sailed from Fort William in Boston Harbor with a considerable retinue, to view his new possession and kept a journal that may still be seen. He anchored

in the "great harbor of Mount Desert," just off the present town of Southwest Harbor, which he laid out with his surveyors; he explored the island, noting its fine timber, its water power for sawmills, its good harbors, its abundance of wild meadow grass "high as a man," and of "wild peas"—beach peas, perhaps—for fodder, and its wealth of fish in the sea. He had himself rowed up Somes Sound, a glacial fiord which deeply penetrates the island, cutting its mountain range in two, and which he calls the river, as in that region other inlets of the sea are called to-day, following the custom of the early French. And he visited Somes, one of the earliest settlers from the Massachusetts shore, then building his log cabin at the sound's head where Somesville is to-day, and walked across to see a beaver's dam nearby, whose "artificialness" he wonders at.

Then came the Revolution. Bernard's stately mansion on the shore of Jamaica Pond and his far-off island on the coast of Maine both were confiscated, he taking the King's side and sailing away from Boston Harbor while the bells were rung in jubilation. And Mount Desert Island, once the property of the Crown of France, once of that of England, and twice granted privately, became again the property of Massachusetts. But after the war was over and Bernard had died in England, his son, John Bernard, petitioned to have his father's ownership of the island restored to him, claiming to have been loyal himself to the colony, and a one-half undivided interest in it was given him. Then, shortly after, came the granddaughter of Cadillac—Marie de Cadillac, as she signed herself—and her husband, French refugees of the period, bringing letters from Lafayette, and petitioned in turn the General Court of Massachusetts to grant them her grandfather's possession of the island—asking it not as of legal right but on a ground of sentiment, the gratitude of the colonies to France for assistance given in their War for Independence. And the General Court, honoring their claim, gave them the other undivided half. Then it sent surveyors down and divided the island, giving the western portion, including the town of Southwest Harbor his father had laid out, to John Bernard, who promptly sold it and went out to England and died governor of one of the West Indies, being also knighted; and the eastern half, where Cadillac once had lived and where Bar Harbor, Seal, and Northeast Harbors are to-day, to Marie de Cadillac and her husband—M. and Mme. de Gregoire—who came to Hulls Cove, on Frenchmans Bay, and lived and died there, selling, piece by piece, their lands to settlers. It is from these two grants made by the Commonwealth of Massachusetts to the granddaughter of Cadillac and the son of Bernard, each holding originally by a royal grant, that the Govern-



ment's present title to its park lands spring. History is written into its deeds.

During the first half of the nineteenth century Mount Desert Island still remained remote and inaccessible, except to coasting vessels, but fishing hamlets gradually sprang up along its shore, the giant pines whose slowly rotting stumps one comes upon to-day among the lesser trees were cut and shipped away, town government was established, roads of a rough sort were built, and the island connected with the mainland by a bridge and causeway. Then came steam, and all took on a different aspect. The Boston & Bangor Steamship Line was established; a local steamer connected Southwest Harbor with it through Eggemoggin Reach and Penobscot Bay, a sail of remarkable beauty; and summer life at Mount Desert began. The first account of it we have is contained in a delightful journal kept during a month's stay at Somesville in 1855 by Mr. Charles Tracy, of New York, the father of Mrs. J. Pierpont Morgan, sr., who came with him as a girl, and which is still preserved. The party was large—26 in all—and filled Somes's Tavern full to overflowing. In it, besides Mr. Tracy and his family, were the Rev. Dr. Stone, of Brookline, Mass., with his family; Frederick Church, the artist, and his sister; and Theodore Winthrop, killed afterward in the Civil War, who wrote John Brent, with its once famous description of a horse. They climbed the mountains, tramped through the woods, lost themselves at night—half a dozen of them—and slept by a campfire in the wild; drove over to Bar Harbor, then on to Schooner Head, where they slept at the old farmhouse, climbing the then nameless "mountain with the cliff" that shadowed it at sundown, and drinking by the pitcherful such milk as New York could not supply; and then, like Hans Breitman, in climax to their stay they gave a party, importing by the boat to Southwest Harbor the first piano the island had ever seen and inviting to it the islanders and fisherfolk from far and near. It was a great success. They danced, they sang songs, they played games, and had a lobster salad such as only millionaires can have to-day, keeping up their gayety until 2 o'clock in the morning, when their last guests—two girls from Bar Harbor who had driven themselves over for it—hitched up their horse and left for home in spite of remonstrance and the offer of a bed. Such was the beginning of Mount Desert social life.

Ten years later, when the Civil War had swept over like a storm, summer life began in earnest at Bar Harbor, compelled by the sheer beauty of the spot. No steamer came to it till 1868; then, for another season, only once a week. No train came nearer than Bangor, 50 miles away, with a rough road between. But still it grew by leaps and bounds, overflowing the native cottages and fishermen's huts, sleeping in tents, feeding on fish and doughnuts and the abundant

lobster. The native cottages expanded and became hotels, simple, bare, and rough, but always full. The life was gay and free and wholly out of doors—boating, climbing, picnicking, buckboarding, and sitting on the rocks with book or friend. All was open to wander over or picnic on; the summer visitor possessed the island. Then lands were bought, summer homes were made, and life of a new kind began.

It was from the impulse of that early summer life that the movement for public reservations and the national park arose, springing from memory of its pleasantness and the desire to preserve in largest measure possible the beauty and freedom of the island for the people's need in years to come. The park, as a park, is still in its beginning. When first accepted by the President as a national monument it contained, by estimate, 5,000 acres; now what it contains and what has been secured in recent years for its extension and the Government's acceptance, taken together, amount fully to three times that acreage, and stretch across Somes Sound to include the western peaks and a wide frontage on the shore. Its lands have been throughout a gift to the Government, coming from many sources, and much personal association is linked, closely and inseparably, with its formation. It is still growing, and with the contiguous, landlocked ocean waters, beautiful as lakes and nationally owned like it, to extend out onto, there is no limit to the number to whom it may give rest and pleasure in the future, coming from our crowded eastern cities, from which it is accessible by land or water, rail or motor car.

#### A WILD-LIFE SANCTUARY

One important aspect of our national parks and monuments is that they—unlike the forests, devised to follow economic lines—are absolute sanctuaries, islands of shelter for the native life in all but noxious forms. Like the monasteries in the Middle Ages that sheltered—all too fragmentarily—the literature and learning of the classic period, they are a means of incalculable value for preserving in this destructive time the wealth of forms and species we have inherited from the past and have a duty to hand on undiminished to the future, so far as that be possible.

In this aspect of a wild-life sanctuary, plant and animal, Lafayette National Park is remarkable. Land and sea, woodland, lake, and mountain all are represented in it in wonderful concentration. In it, too, the northern and temperate zone floras meet and overlap, and land climate meets sea climate, each tempering the other. It lies directly in the coast migration route of birds and exhibits at its fullest the Acadian forest, made famous by Evangeline, and the northernmost extension of that great Appa-

lachian forest which at the landing of De Monts stretched without a break from the St. Lawrence to the Gulf and is the oldest, by the record of the rocks, and richest in existing species of any mingled hardwood and coniferous forest in the temperate zone. And it possesses, also, a rich biologic field in the neighboring ocean, the parent habitat of life. Deeper waters apart, the sea beach and tidal pools alone form an infinite source of interest and study, while the ocean climate, like the land one, is profoundly different from that to the southward, off the Cape Cod shore.

To take advantage of this opportunity an association has been formed, incorporated under the name of the Wild Gardens of Acadia, to cooperate with the Government in the development of the educational and scientific features of the park and its environment. By means of it a marine biological laboratory has been established on the shore, material has been gathered for a book upon the wild flowers of the park and wild gardens for their exhibition started, entomological collections have been made, and studies in the bird life and geology of the region. Plans are in the making for a museum to house collections, already made in part, of Indian implements found along the shore, of maps and early charts and various historical material, of marine and other faunal specimens, and plant herbaria. The park itself is a living natural history museum, a geological and historic area explained by the nature guide and lecture service which is rapidly becoming a feature in our national parks.

Botanically Lafayette National Park forms an exceedingly interesting area. Champlain's term "deserts" in description of the mountains meant, in accordance with the original significance of the word, "wild and solitary"; not "devoid of vegetation." Vegetation, on the contrary, grows upon the island with exceptional vigor, and in wide range of form. The native forest must—before it was invaded by the axe—have been superb, and superb it will again become under the Government's protection. Wild flowers are abundant in their season, among them a number of species of conspicuous beauty, because of their loveliness in danger of extermination until the national park was formed and its lands became a sanctuary. The rocks, frost split and lichen-clad, with granite sands between, are of a character that makes the mountain tops, with their bearberries and blueberries and broad ocean outlook, wild rock gardens of inspiring beauty, while both mountain tops and woods are made accessible by over a hundred miles of trails built by successive generations of nature-loving summer visitors.

In addition to ocean, rocks, and mountain heights, to woods and wild flowers, and to trails trodden by the feet of generations,

Lafayette National Park has a rich possession in an inexhaustible spring source of pure, delicious water rising—cool and constant—from beneath the mountain at the entrance from Bar Harbor, and made, with its free gift of water to the passing public, a memorial to the Sieur de Monts, the founder of Acadia.

### ROADS

A road of great beauty through the lake district of the park, connecting Bar Harbor with the resorts upon the southern shore, Seal and Northeast Harbors, has been opened to travel. Rising from this, another road upon which work has lately been commenced is planned to reach the summit of Cadillac Mountain, the highest point in the park range or on our eastern coast, replacing an early buckboard road now washed away. Roads giving entrance to the park upon the northern or Bar Harbor side, with parking space for those who wish to use the mountain trails, are under construction, as is also a system of roads for use with horses which, when complete, will open other and wide sections of the park to a use that will recall the past, preserving what the motor road has lost.

### MOTOR TRAVEL

No place in the East offers an objective point of greater interest for motor travel than Lafayette National Park and its surrounding coast resorts, which provide accommodations for its visitors. This travel is already great, coming from all eastern and central sections of the country. Opportunity for motor camping is provided in the park, and there are excellent stores, repair shops, and garages within easy reach.

### FISHING

Lafayette National Park combines the opportunity for excellent fishing in fresh waters, of lake and stream, with that for deep-sea and coastal fishing in waters identical in life and character with those of the famous banks which lie offshore from it, across the Gulf of Maine. Power boats, sail boats, canoes, and camping outfits can all be rented, with competent guides.

### MOTOR AND BOAT TRIPS

From the park as center a wide variety of interesting motor trips, along the coast as far as to the Maritime Provinces and inland to Moosehead Lake and Mount Katahdin, can readily be made, and excellent cars for the purpose can be hired by visitors not coming in their own. From it also delightful trips by water can be made over island-sheltered reaches of the sea, extending from Frenchmans Bay to Penobscot Bay and River along the most beautiful section of our Atlantic coast.

### INFORMATION

The office of Lafayette National Park is situated at Bar Harbor, Me., on the corner of Main Street and Park Road, opposite the Athletic Field. It is open daily except Sundays from 9 o'clock a. m. to 5 o'clock p. m. during the summer season, from June 15 to October 15; at other seasons, until 4 o'clock.

The Bar Harbor Information Bureau immediately adjoins it upon Main Street, and is prepared to furnish visitors with all information concerning train service and boat service, motor routes, fares, hotels and boarding houses, objects of interest, trails, and excursions, or to answer correspondence. Maps of Mount Desert Island, issued by the United States Geological Survey and literature relating to the park and to the history and natural history of its region may be obtained from the office or the information bureau.

The superintendent of the park is George B. Dorr, to whom all correspondence relating to the park should be addressed.

### HOW TO REACH THE PARK

Lafayette National Park may be reached by automobile, by railroad, or by steamship. Visitors coming by rail are taken to Mount Desert Ferry, at the head of Frenchmans Bay, and thence across the bay, an 8-mile sail over beautiful and quiet waters, to Bar Harbor. For the motorist, Mount Desert Island is connected with the mainland by a recently constructed steel and concrete drawbridge, terminus of the Lafayette Highway connecting Bangor on the Atlantic Highway with Bar Harbor and the National Park. The road is excellent. One may also motor to Rockland, at the entrance to Penobscot Bay, and take the sail thence to Bar Harbor or to Northeast or Southwest Harbors, with car aboard.

The trip to the park may be made also by sea from Boston, by the boats of the Eastern Steamship Line running to Bangor, with change at Rockland.

# RULES AND REGULATIONS

## GENERAL REGULATIONS

The following rules and regulations for the government of Lafayette National Park are hereby established and made public pursuant to authority conferred by the acts of Congress approved February 26, 1919 (40 Stat., 1178), and August 25, 1916 (39 Stat., 535), as amended June 2, 1920 (41 Stat., 732):

1. *Preservation of natural features and curiosities.*—The destruction, injury, defacement, or disturbance in any way of buildings, signs, equipment, or other property within the park, of trees, flowers, or other vegetation, rocks or minerals, animal, bird, or other life is strictly prohibited.

2. *Camping.*—No camp shall be made except at designated localities, and when made must be kept neat and orderly. Blankets, clothing, hammocks, or any other articles of camp equipment shall not be hung or exhibited near any public road or trail.

Camp grounds must be thoroughly cleaned before they are abandoned. Cans, bottles, cast-off clothing, and all other débris shall be placed in garbage receptacles or buried in pits provided for the purpose.

Camper's may use dead or fallen timber only for fuel.

3. *Fires.*—Fires constitute one of the greatest perils to a park. They shall not be kindled except with the express permission of the superintendent or his representatives, and in designated localities; they shall be lighted only when necessary, and when no longer needed shall be completely extinguished, all embers and ash beds being smothered with earth or water so that no possibility remains of their again becoming alive.

No lighted match, cigar, or cigarette shall be dropped in grass, twigs, leaves, or tree mold, or thrown away unextinguished.

4. *Hunting.*—The park is a sanctuary for wild life of every sort, and hunting, killing, wounding, capturing, or frightening any bird or wild animal in the park is strictly prohibited.

5. *Fishing.*—Fishing must be done in strict accordance with the State laws. Fishing in particular waters may be suspended, or the number of fish that may be taken by one person in any one day from the various streams or lakes may be regulated by the superintendent.

6. *Private operations.*—No person, firm, or corporation shall reside permanently, engage in any business, or erect buildings in the park without permission in writing from the Director of the National Park Service, Washington, D. C. Applications for such permission may be addressed to the director or to the superintendent of the park.

7. *Cameras.*—Still and motion picture cameras may be freely used in the park for general scenic purposes. For the filming of motion pictures requiring the use of artificial or special settings, or involving the performance of a professional cast, permission must first be obtained from the superintendent of the park.

8. *Gambling.*—Gambling in any form, or the operation of gambling devices, whether for merchandise or otherwise, is prohibited.

9. *Advertisements.*—Private notices or advertisements shall not be posted or displayed within the park excepting such as the park superintendent deems necessary for the convenience and guidance of the public.

10. *Grazing.*—The running at large, herding, or grazing of livestock of any kind on the Government lands in the park, as well as the driving of livestock over same, is prohibited, except where authority therefor has been granted by the superintendent. Livestock found improperly on the park lands may be impounded and held until claimed by the owner and the trespass adjusted.

11. *Authorized operators.*—All persons, firms, or corporations holding franchises in the park shall keep the grounds used by them properly policed and shall maintain the premises in a sanitary condition to the satisfaction of the superintendent. No operator shall retain in his employment a person whose presence in the park may be deemed by the superintendent subversive of good order and management of the park.

All operators shall require each of their employees to wear a metal badge with a number thereon or other mark of identification, the name and the number corresponding therewith or the identification mark being registered in the superintendent's office. These badges must be worn in plain sight on the hat or cap.

12. *Dogs and cats.*—Cats are not permitted in the park and dogs only when under leash.

13. *Miscellaneous.*—(a) Campers and others shall not wash clothing or cooking utensils in the waters of the park or in any way pollute them.

(b) Campers and all others, save those holding licenses from the Director of the National Park Service, are prohibited from renting their horses, trappings, or vehicles to tourists or visitors in the park.

(c) All complaints by tourists and others as to service, etc., rendered in the park should be made to the superintendent, in writing, before the complainant leaves the park. Oral complaints will be heard daily during office hours.

14. *Fines and penalties.*—Persons who render themselves obnoxious by disorderly conduct or bad behavior shall be subjected to

the punishment hereinafter prescribed for violation of the foregoing regulations or they may be summarily removed from the park by the superintendent and not allowed to return without permission in writing from the Director of the National Park Service or the superintendent of the park.

Any person who violates any of the foregoing regulations shall be deemed guilty of a misdemeanor and shall be subject to a fine of not more than \$500 or imprisonment not exceeding 6 months, or both, and be adjudged to pay all costs of the proceedings.

15. *Lost and found articles.*—Persons finding lost articles should deposit them at the nearest ranger station, leaving their own names and addresses, so that if not claimed by owners within 60 days articles may be turned over to those who found them.

### MAP

A topographic map of Lafayette National Park (size 13½x20½ inches); scale 2 miles to the inch, may be purchased from the Director of the Geological Survey, Washington, D. C., for 10 cents, postage prepaid.<sup>1</sup>

On the above map the roads, trails, and names are printed in black, the streams in blue, and the relief is indicated by brown contour lines.

### LITERATURE

#### GOVERNMENT PUBLICATIONS

Government publications on Lafayette National Park may be obtained as indicated below. Separate communications should be addressed to the officers mentioned.

#### DISTRIBUTED FREE BY THE NATIONAL PARK SERVICE

The following publications may be obtained free on written application to the Director of the National Park Service, or by personal application to the office of the superintendent of the park.

Map of National Parks and National Monuments.

Shows location of all of the national parks and monuments administered by the National Park Service, and all railroad routes to these reservations.

Map of the western United States.

Shows the National Park-to-Park Highway and other roads.

Glimpses of Our National Parks. 59 pages including 23 illustrations.

Contains description of the most important features of the principal national parks.

#### SOLD BY THE SUPERINTENDENT OF DOCUMENTS

The following publications may be obtained from the Superintendent of Documents, Government Printing Office, Washington, D. C.,

<sup>1</sup> May be purchased also by application at the office of the superintendent of the park, but that office can not fill mail orders.



at the prices indicated. Postage prepaid. Remittances should be made by money order or in cash.

**The National Parks Portfolio.** By Robert Sterling Yard. Fourth Edition. 270 pages, including 310 illustrations. Bound securely in cloth. \$1.<sup>1</sup>

Contains nine chapters, each descriptive of a national park, and one a larger chapter devoted to other parks and monuments.

### OTHER NATIONAL PARKS

Rules and Regulations similar to this for national parks listed below may be obtained free of charge by writing to the Director of the National Park Service, Washington, D. C.

Crater Lake National Park.

Glacier National Park.

Grand Canyon.

Hawaii National Park.

Hot Springs National Park.

Lassen Volcanic National Park.

Mesa Verde National Park.

Mount Rainier National Park.

Rocky Mountain National Park.

Sequoia and General Grant National Parks.

Wind Cave National Park.

Yellowstone National Park.

Yosemite National Park.

Zion National Park.

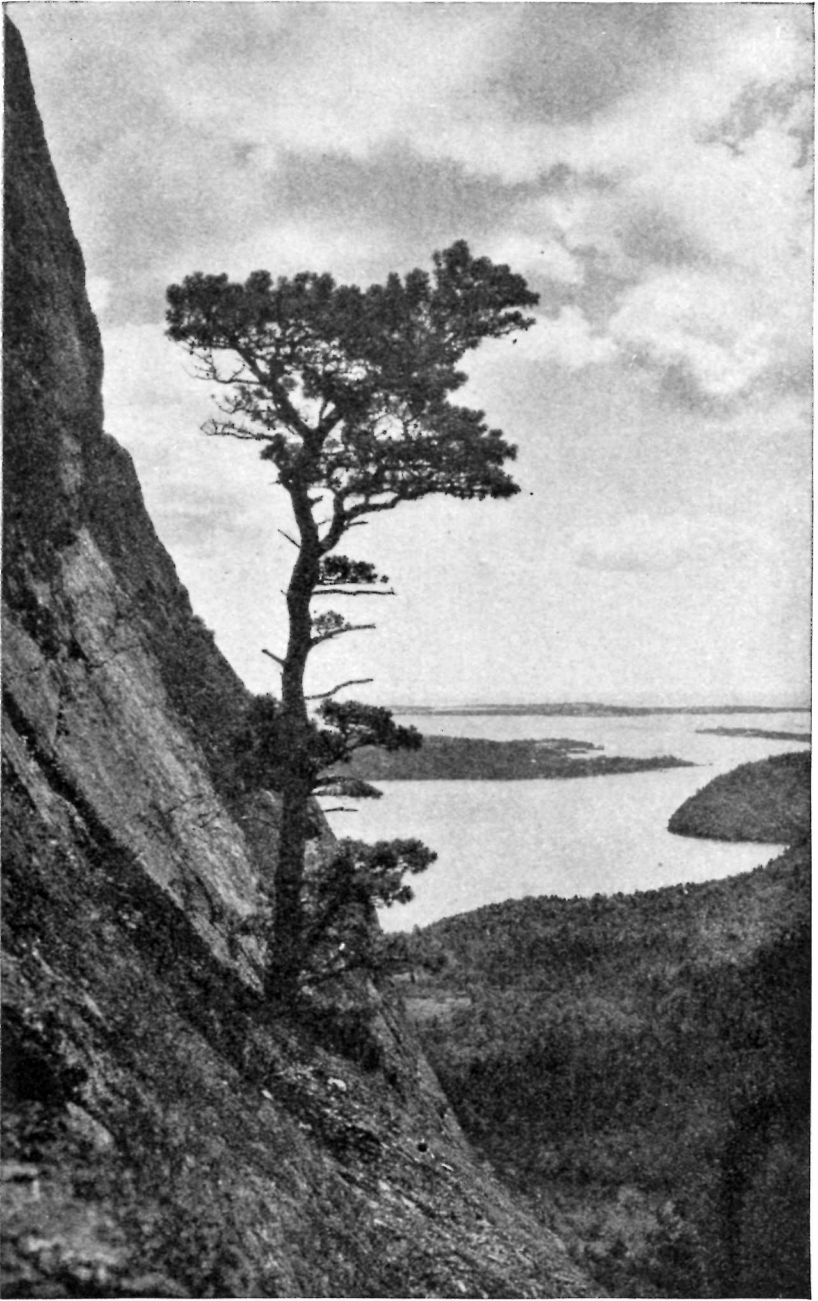
### NATIONAL MONUMENTS

Glimpses of Our National Monuments, a pamphlet of 73 pages, including 34 illustrations, contains brief descriptions of all the national monuments administered by the Department of the Interior.

---

<sup>1</sup> May be purchased also by personal application at the office of the superintendent of the park, but that office can not fill mail orders.





THE GREAT HARBOR OF MOUNT DESERT FROM ACADIA MOUNTAIN



YOUNG BALD EAGLES