

Baker Island Light --
Lightkeeper's House
Baker Island
Hancock County
Maine

HABS No. ME-172

HABS
ME,
5-BAKIS,
1-

MEASURED DRAWINGS

Historic American Buildings Survey
National Park Service
Department of the Interior
Washington, D.C. 20240

ADDENDUM
FOLLOWS...

ME, 5 - BAKIS, 1 -

65

MAINE

HANCOCK

BAKER ISLAND

STATE

COUNTY

TOWN or VICINITY

BAKER ISLAND LIGHT -- LIGHTKEEPER'S HOUSE (ME-172)
STRUCTURE

4 mis. S-SE of Mt. Desert Is. Built 1828; rebuilt 1855. 6 sheets (1976, incl. plans, elevations, details); field records. NPS

Card prepared 1982

60

BS ME

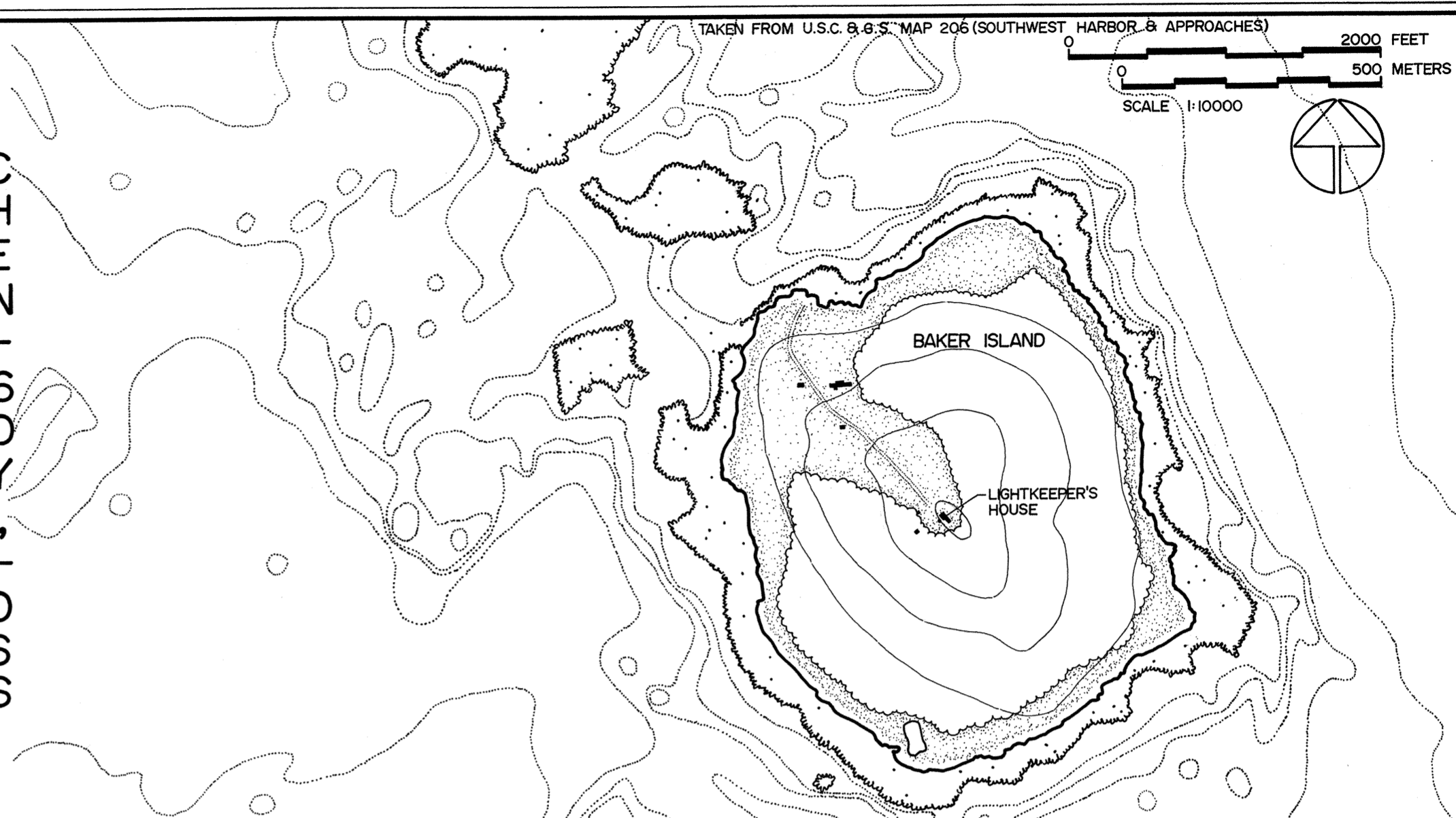
CCN: ME0038

LIBRARY OF CONGRESS
CATALOGING INFORMATION

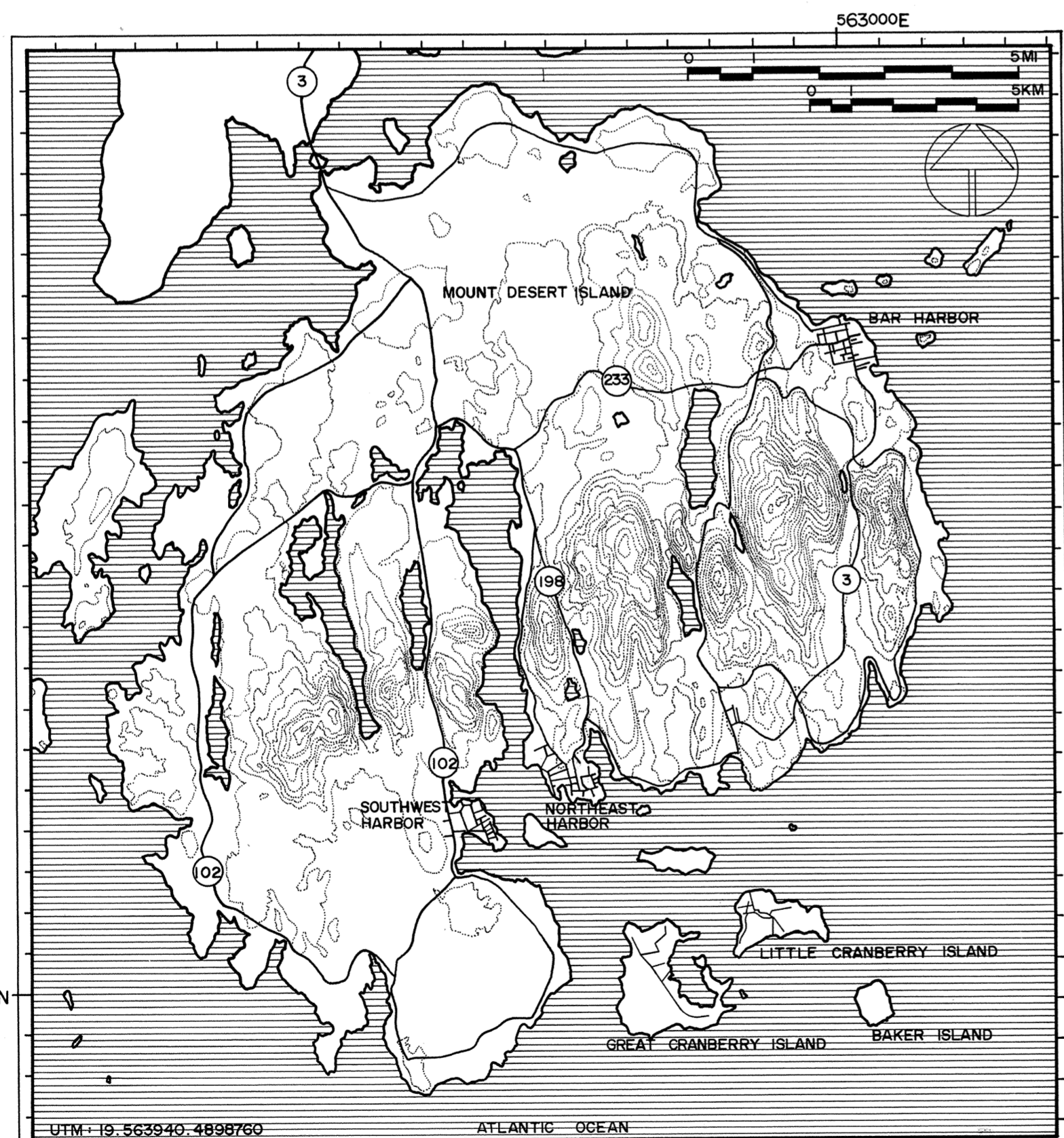
81-101b (3/78)

HISTORIC AMERICAN BUILDINGS SURVEY

THIS PROJECT WAS UNDERTAKEN BY THE HISTORIC AMERICAN BUILDINGS SURVEY IN COOPERATION WITH THE NORTH ATLANTIC REGIONAL OFFICE OF THE NATIONAL PARK SERVICE. UNDER THE DIRECTION OF JOHN POPPELIERS, CHIEF OF HABS, THE PROJECT WAS COMPLETED DURING THE SUMMER OF 1976 AT THE HISTORIC AMERICAN BUILDINGS SURVEY FIELD OFFICE ON MOUNT DESERT ISLAND, MAINE, BY JACK W. SCHAFER (UNIVERSITY OF CINCINNATI), PROJECT SUPERVISOR; STEPHEN A. ENGLAND (UNIVERSITY OF CINCINNATI), PROJECT FOREMAN; AND ASSISTANT ARCHITECTS ARTHUR L. H. EDWARDS (TUSKEGEE INSTITUTE), AND LENNARD ROBERTS (CORNELL UNIVERSITY).



LIGHTKEEPER'S HOUSE BAKER ISLAND LIGHT



THE FIRST BAKER ISLAND LIGHTHOUSE BEGAN OPERATION IN 1828 WITH WILLIAM GILLEY AS LIGHTKEEPER. WITH THE ELECTION OF A WHIG PRESIDENT IN 1848, GILLEY WAS REPLACED, AND BY 1855 THE LIGHT AND THE KEEPER'S DWELLING HAD BEEN REBUILT AT A COST OF \$4,963. IN 1903 THE WOODEN LIGHT TOWER WAS REINFORCED BY A 4" BRICK WALL, AND IN 1958 THE LIGHT WAS MADE AUTOMATIC, LEAVING THE KEEPER'S HOUSE ABANDONED.

ADAPTED FROM U.S.G.S. MAP, "ACADIA NATIONAL PARK AND VICINITY, 1971" · CONTOUR INTERVAL 100' · SCALE 1:125000

DRAWN BY: STEPHEN A. ENGLAND

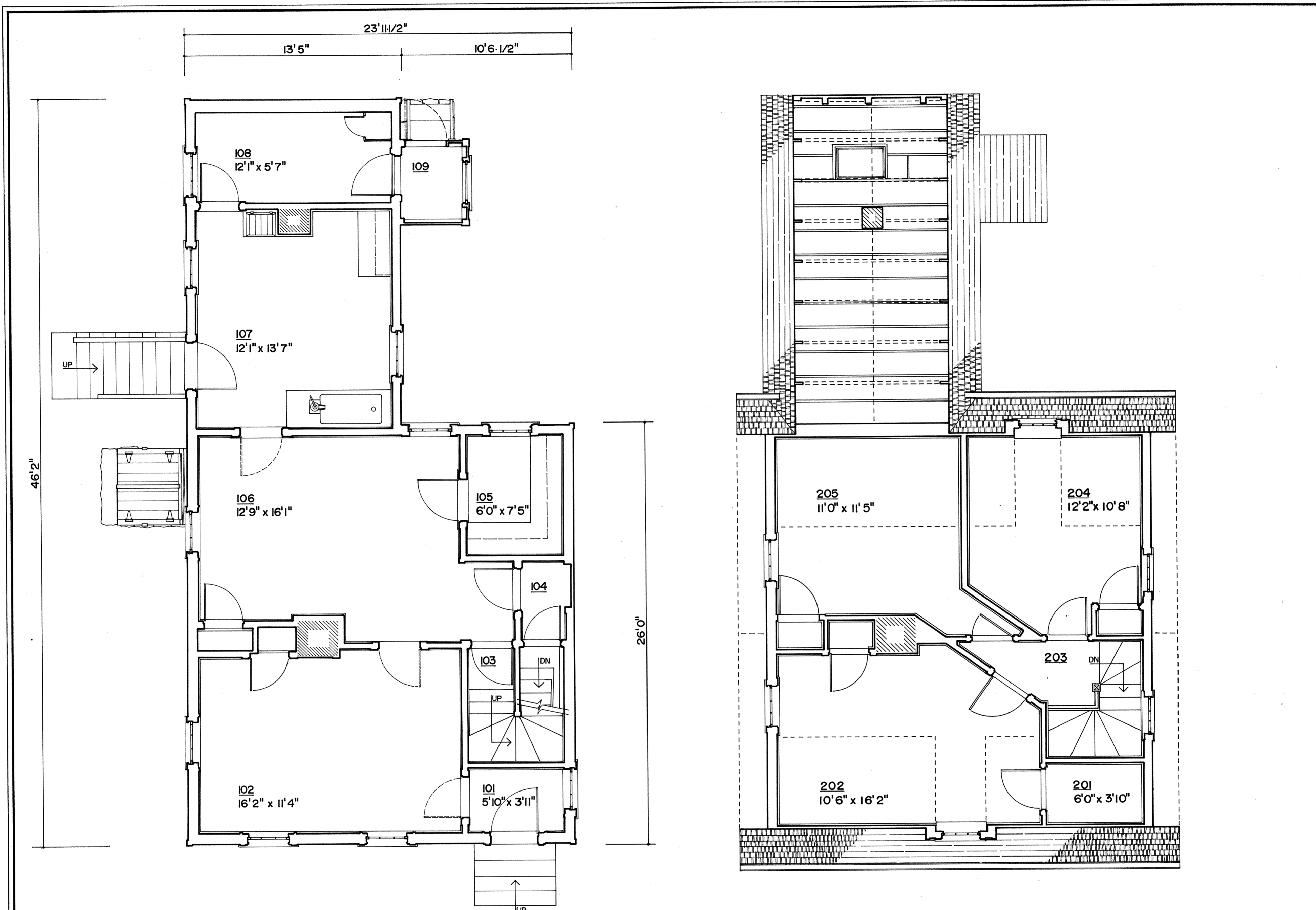
ACADIA NATIONAL PARK PROJECT 1976
OFFICE OF ARCHEOLOGY AND HISTORIC PRESERVATION
UNDER DIRECTION OF THE NATIONAL PARK SERVICE,
UNITED STATES DEPARTMENT OF THE INTERIOR

NAME AND LOCATION OF STRUCTURE
LIGHTKEEPER'S HOUSE - BAKER ISLAND LIGHT
BAKER ISLAND, FOUR MILES SOUTH-SOUTHEAST OF MT. DESERT ISLAND, HANCOCK COUNTY, MAINE

SURVEY NO.
ME-
172

HISTORIC AMERICAN
BUILDINGS SURVEY
SHEET 1 OF 6 SHEETS

LIBRARY OF CONGRESS
INDEX NUMBER



FIRST FLOOR PLAN

SECOND FLOOR PLAN

DRAWN BY: STEPHEN A. ENGLAND, LENNARD ROBERTS

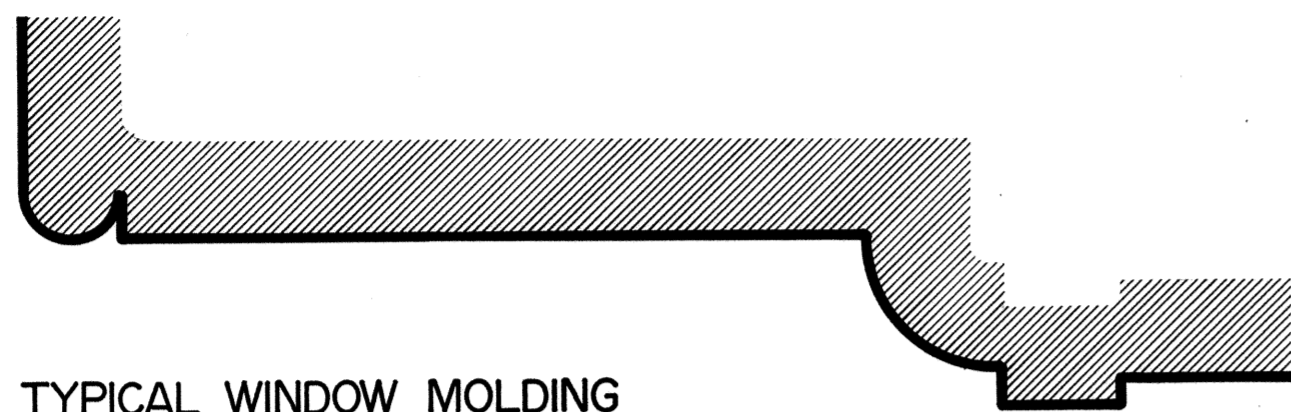
ACADIA NATIONAL PARK PROJECT 1976
OFFICE OF ARCHEOLOGY AND HISTORIC PRESERVATION
UNDER DIRECTION OF THE NATIONAL PARK SERVICE,
UNITED STATES DEPARTMENT OF THE INTERIOR

NAME AND LOCATION OF STRUCTURE
LIGHTKEEPER'S HOUSE - BAKER ISLAND LIGHT
BAKER ISLAND, FOUR MILES SOUTH-SOUTHEAST OF MT. DESERT ISLAND, HANCOCK COUNTY, MAINE

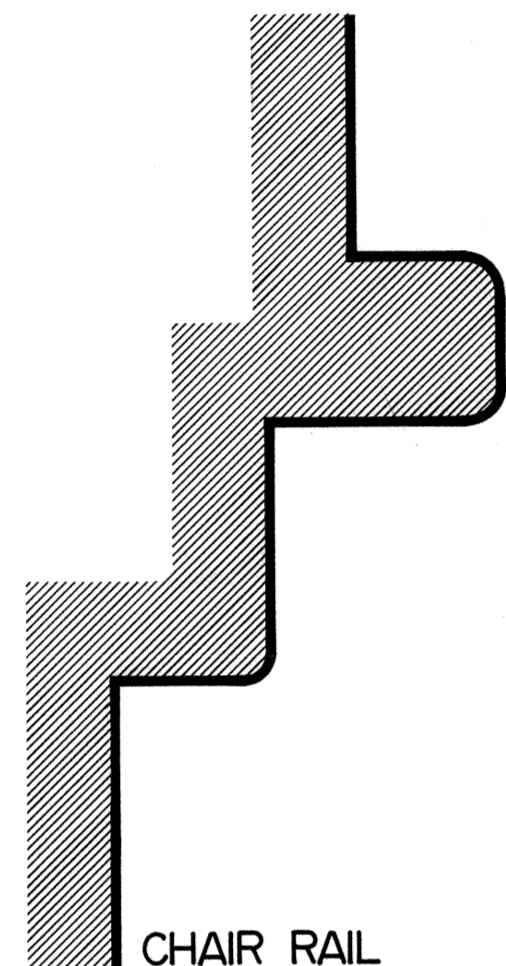
SURVEY NO.
ME-
172

HISTORIC AMERICAN
BUILDINGS SURVEY
SHEET 2 OF 6 SHEETS

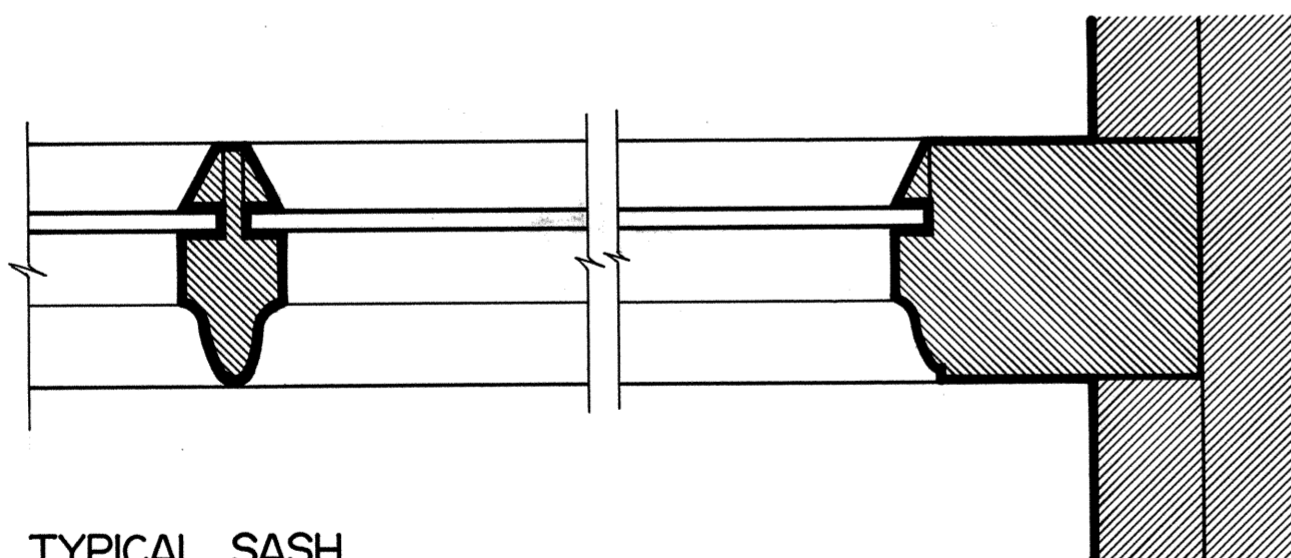
LIBRARY OF CONGRESS
INDEX NUMBER



TYPICAL WINDOW MOLDING
(EXCEPT SOUTH WINDOW, ROOM 106)

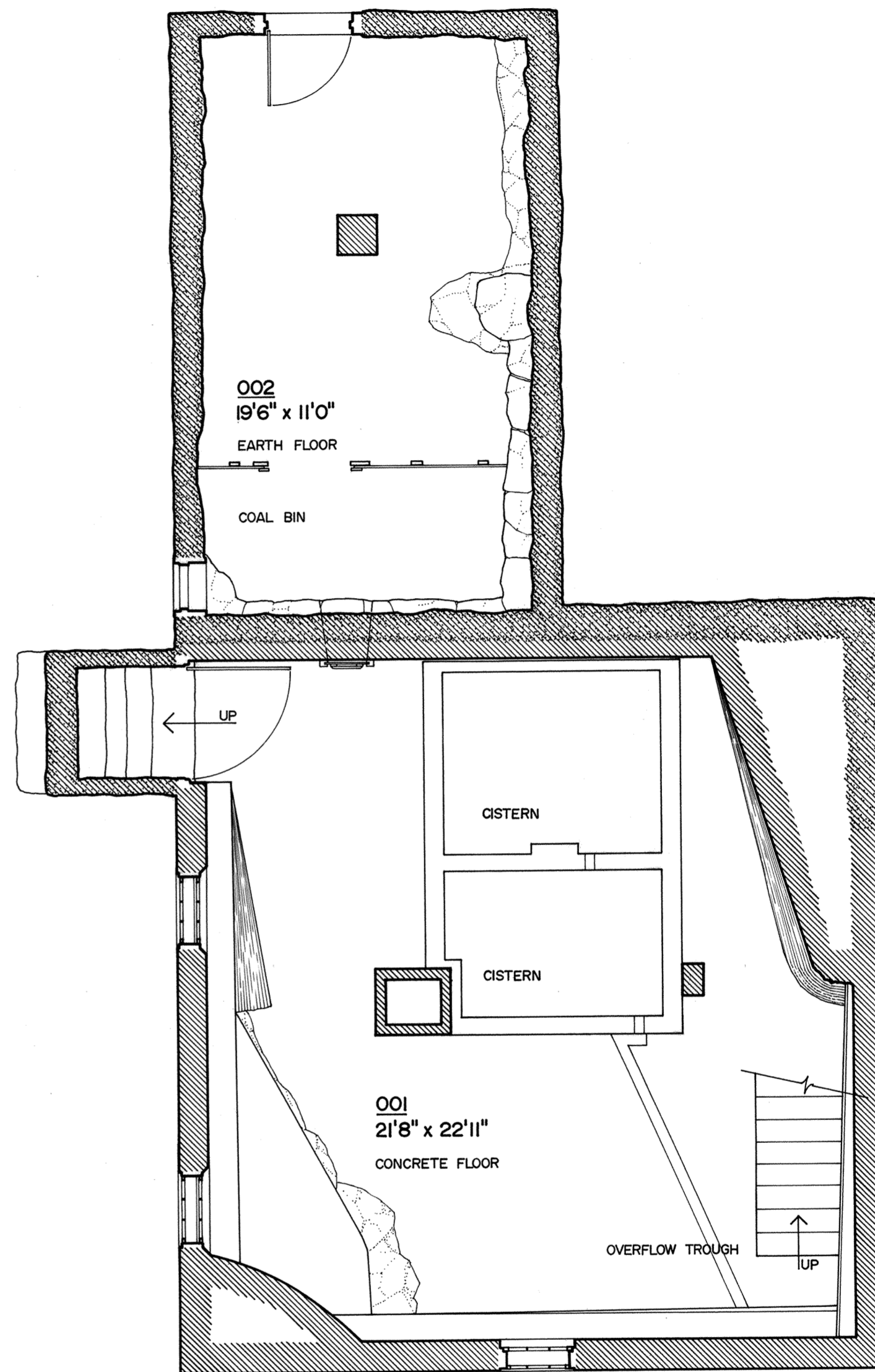
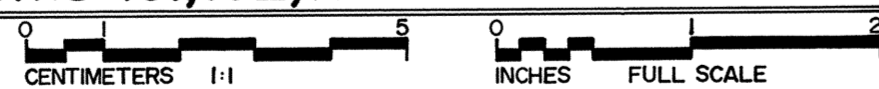


CHAIR RAIL
(EXTERIOR WALLS ONLY)

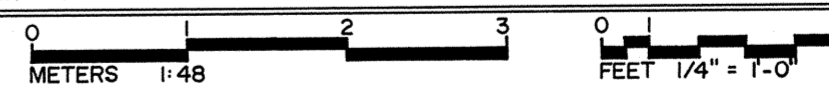


TYPICAL SASH

DETAILS - ROOMS 101, 102, 106



BASEMENT PLAN



DRAWN BY: STEPHEN A. ENGLAND

ACADIA NATIONAL PARK PROJECT 1976
OFFICE OF ARCHEOLOGY AND HISTORIC PRESERVATION
UNDER DIRECTION OF THE NATIONAL PARK SERVICE,
UNITED STATES DEPARTMENT OF THE INTERIOR

NAME AND LOCATION OF STRUCTURE

LIGHTKEEPER'S HOUSE - BAKER ISLAND LIGHT
BAKER ISLAND, FOUR MILES SOUTH-SOUTHEAST OF MT. DESERT ISLAND, HANCOCK COUNTY, MAINE

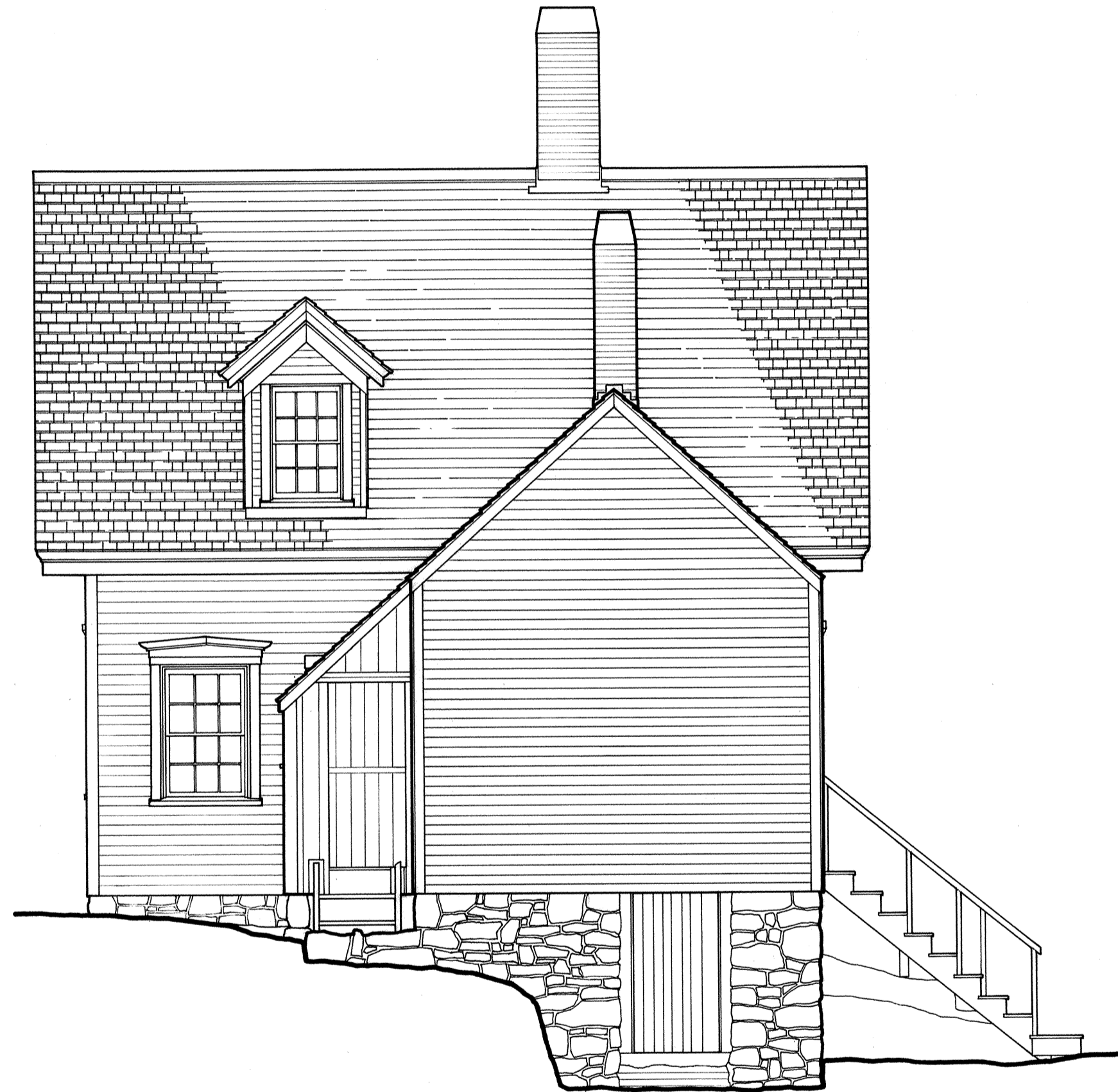
SURVEY NO.
ME-
172

HISTORIC AMERICAN
BUILDINGS SURVEY
SHEET 3 OF 6 SHEETS

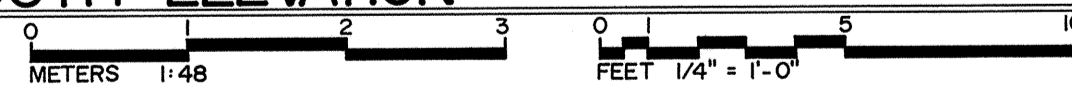
LIBRARY OF CONGRESS
INDEX NUMBER



NORTH ELEVATION



SOUTH ELEVATION



DRAWN BY: STEPHEN A. ENGLAND

ACADIA NATIONAL PARK PROJECT 1976
 OFFICE OF ARCHEOLOGY AND HISTORIC PRESERVATION
 UNDER DIRECTION OF THE NATIONAL PARK SERVICE,
 UNITED STATES DEPARTMENT OF THE INTERIOR

NAME AND LOCATION OF STRUCTURE

LIGHTKEEPER'S HOUSE - BAKER ISLAND LIGHT
 BAKER ISLAND, FOUR MILES SOUTH-SOUTHEAST OF MT. DESERT ISLAND, HANCOCK COUNTY, MAINE

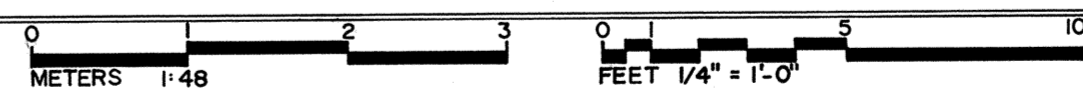
SURVEY NO.
 ME-
 172

HISTORIC AMERICAN
 BUILDINGS SURVEY
 SHEET 4 OF 6 SHEETS

LIBRARY OF CONGRESS
INDEX NUMBER



EAST ELEVATION



DRAWN BY: LENNARD ROBERTS

ACADIA NATIONAL PARK PROJECT 1976
 OFFICE OF ARCHEOLOGY AND HISTORIC PRESERVATION
 UNDER DIRECTION OF THE NATIONAL PARK SERVICE,
 UNITED STATES DEPARTMENT OF THE INTERIOR

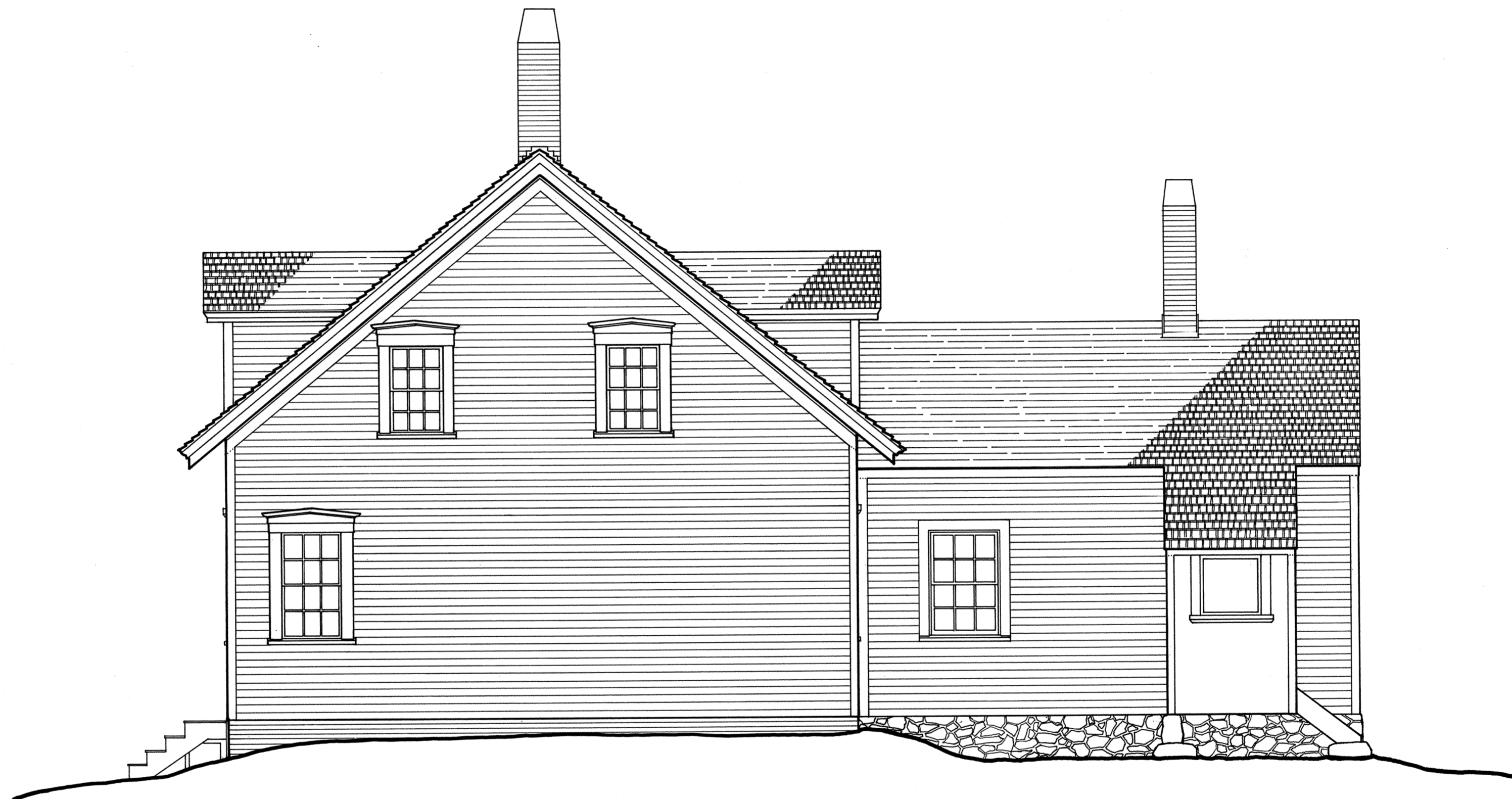
NAME AND LOCATION OF STRUCTURE

LIGHTKEEPER'S HOUSE - BAKER ISLAND LIGHT
 BAKER ISLAND, FOUR MILES SOUTH-SOUTHEAST OF MT. DESERT ISLAND, HANCOCK COUNTY, MAINE

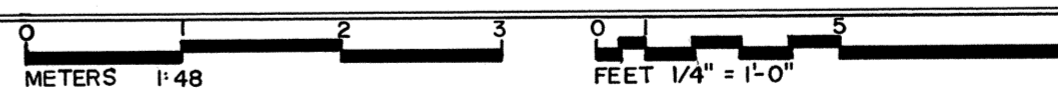
SURVEY NO.
 ME-
 172

HISTORIC AMERICAN
 BUILDINGS SURVEY
 SHEET 5 OF 6 SHEETS

LIBRARY OF CONGRESS INDEX NUMBER



WEST ELEVATION



DRAWN BY: LENNARD ROBERTS

ACADIA NATIONAL PARK PROJECT 1976
 OFFICE OF ARCHEOLOGY AND HISTORIC PRESERVATION
 UNDER DIRECTION OF THE NATIONAL PARK SERVICE,
 UNITED STATES DEPARTMENT OF THE INTERIOR

NAME AND LOCATION OF STRUCTURE

LIGHTKEEPER'S HOUSE - BAKER ISLAND LIGHT
 BAKER ISLAND, FOUR MILES SOUTH-SOUTHEAST OF MT. DESERT ISLAND, HANCOCK COUNTY, MAINE

SURVEY NO.

ME-
 172

HISTORIC AMERICAN
 BUILDINGS SURVEY
 SHEET 6 OF 6 SHEETS

LIBRARY OF CONGRESS INDEX NUMBER

ADDENDUM TO
BAKER ISLAND LIGHT, LIGHTKEEPER'S HOUSE
Just east of the Cranberry Isles, at entrance
to Frenchman Bay
Baker Island
Hancock County
Maine

HABS No. ME-172

HABS
ME
5-BAKIS
1-

PHOTOGRAPHS

HISTORIC AMERICAN BUILDINGS SURVEY
National Park Service
Northeast Region
U.S. Custom House
200 Chestnut Street
Philadelphia, PA 19106

HABS
ME
5-BAKIS
1-

HISTORIC AMERICAN BUILDINGS SURVEY

INDEX TO PHOTOGRAPHS

ADDENDUM TO
BAKER ISLAND LIGHT, LIGHTKEEPER'S HOUSE
Just east of the Cranberry Isles, at entrance
to Frenchman Bay
Baker Island
Hancock County
Maine

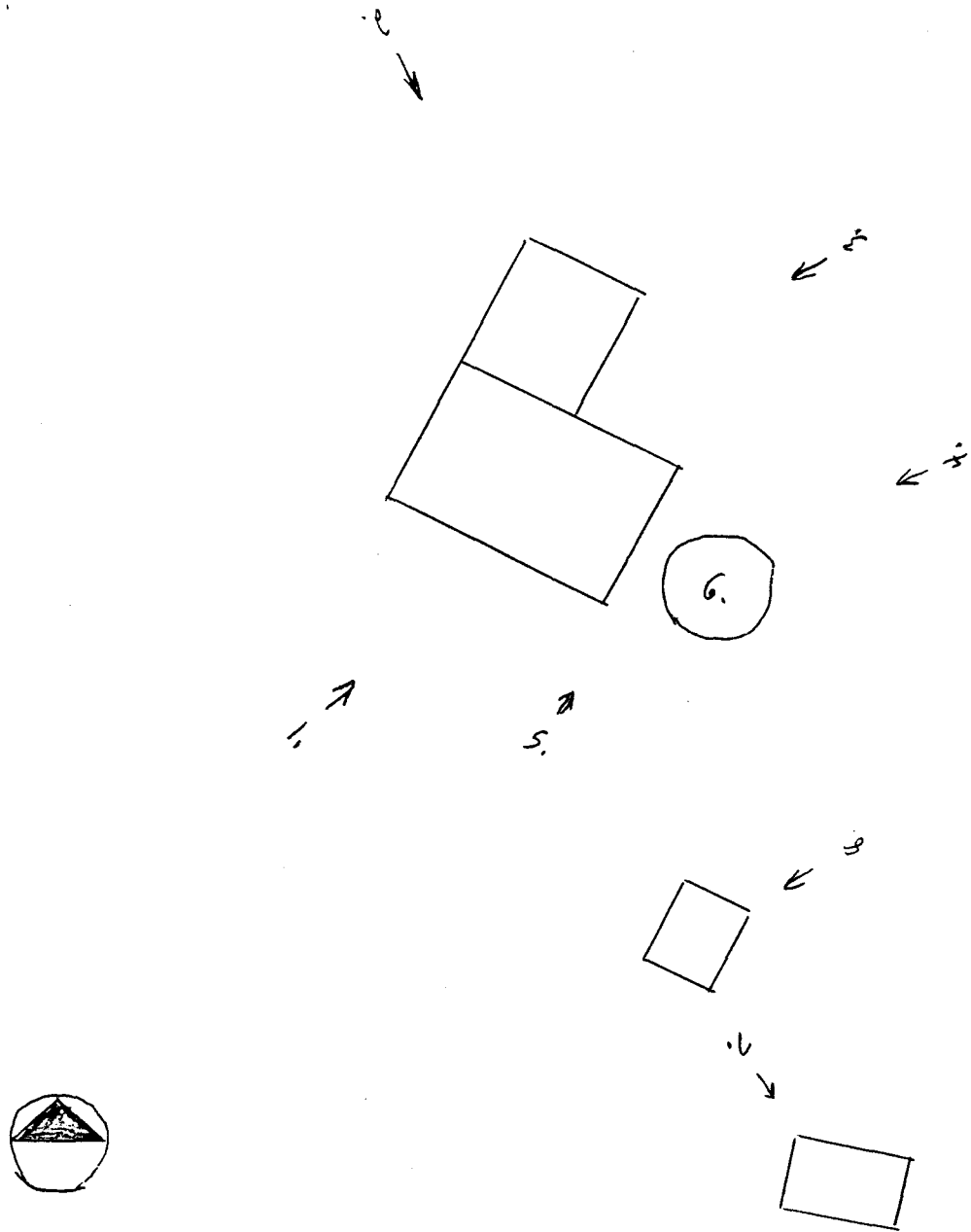
HABS No. ME-172

Photographer: Richard Cheek

July, 1990

- ME-172-1 KEEPER'S HOUSE AND LIGHT TOWER, VIEW NORTHEAST,
NORTHWEST AND SOUTHWEST SIDES
- ME-172-2 KEEPER'S HOUSE, VIEW SOUTHEAST, NORTHEAST AND
NORTHWEST SIDES
- ME-172-3 KEEPER'S HOUSE, VIEW SOUTHWEST, SOUTHEAST AND
NORTHEAST SIDES
- ME-172-4 LIGHT TOWER AND KEEPER'S HOUSE, VIEW WEST,
SOUTHEAST AND NORTHEAST SIDES
- ME-172-5 LIGHT TOWER AND CORNER OF KEEPER'S HOUSE, VIEW
NORTHEAST, NORTHWEST AND SOUTHWEST SIDES
- ME-172-6 LIGHT TOWER, DETAIL OF STAIRS LEADING FROM FIRST
LANDING TO CUPOLA, LOOKING EAST
- ME-172-7 BARN, VIEW SOUTHEAST, WEST AND NORTH SIDES
- ME-172-8 OIL HOUSE, VIEW SOUTHEAST, NORTHWEST SIDE AND
NORTHEAST FRONT

SKETCH MAP (NOT TO SCALE)





HABS No. ME-172-1



HABS No. ME-172-2.



PA 15 No. 12-173

HABS No. ME-172-4



HABS No. ME-172-5





HABS. NO. ME. 172. - 6



HABS No. ME-172-7

HABS No. ME-172-8

