

BROWN MOUNTAIN GATE LODGE
Acadia National Park Roads & Bridges
Maine Route 3, 1/2 mile North of Asticou
Northeast Harbor Vicinity
Hancock County
Maine

HAER NO. ME-53

HAER
ME
5-NORHA.V
1-

PHOTOGRAPHS

MEASURED AND INTERPRETIVE DRAWINGS

HISTORIC AMERICAN ENGINEERING RECORD
National Park Service
Department of the Interior
P.O. Box 37127
Washington, D.C. 20013-7127

HISTORIC AMERICAN ENGINEERING RECORD

INDEX TO PHOTOGRAPHS

HAER
ME
S-NORHA
1-

BROWN MOUNTAIN GATE LODGE

HAER No. ME-53

Maine Route 3, ½ Mile N of Asticou

Acadia National Park Roads and Bridges

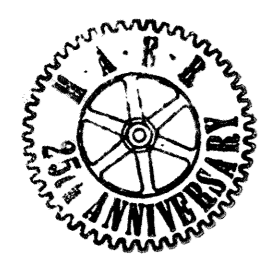
Northeast Harbor, Vicinity

Hancock County

Maine

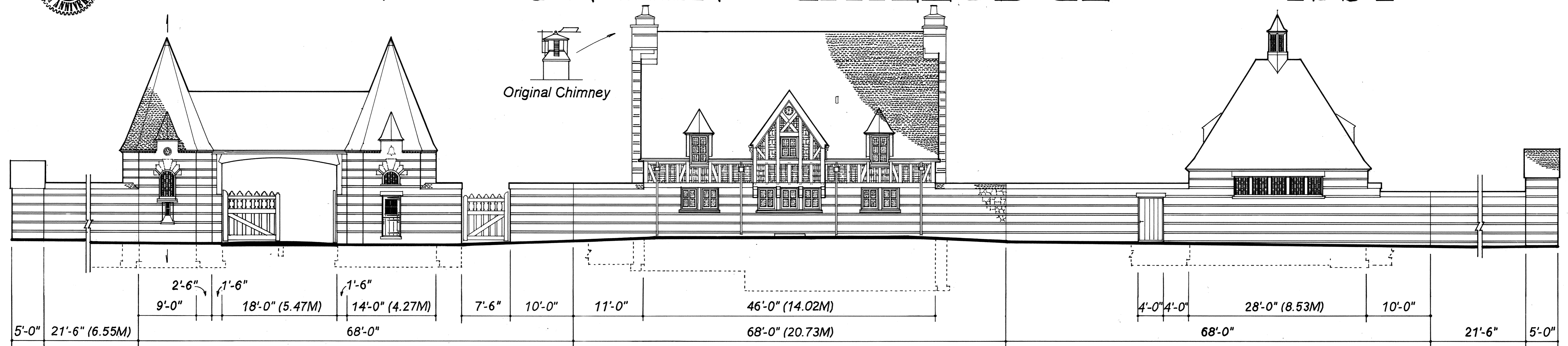
JET LOWE, PHOTOGRAPHER, SEPTEMBER 1994

ME-53-1	GENERAL VIEW OF GATEHOUSE FACING NE
ME-53-2	GATE DETAIL WITH GATE CLOSED
ME-53-3	GATE DETAIL WITH GATE OPEN
ME-53-4	DETAIL OF CARRIAGE HOUSE FACING SE
ME-53-5	GATEHOUSE FACING WEST



BROWN MOUNTAIN GATELODGE

1931



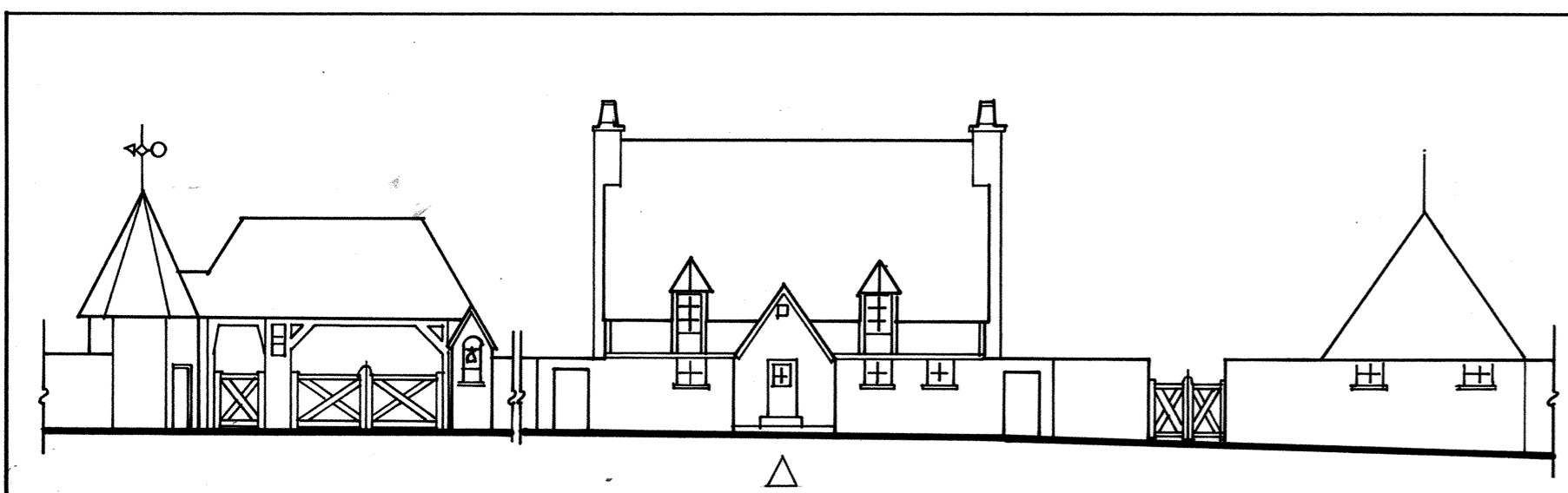
West Elevation

scale: 1/8" = 1'-0"

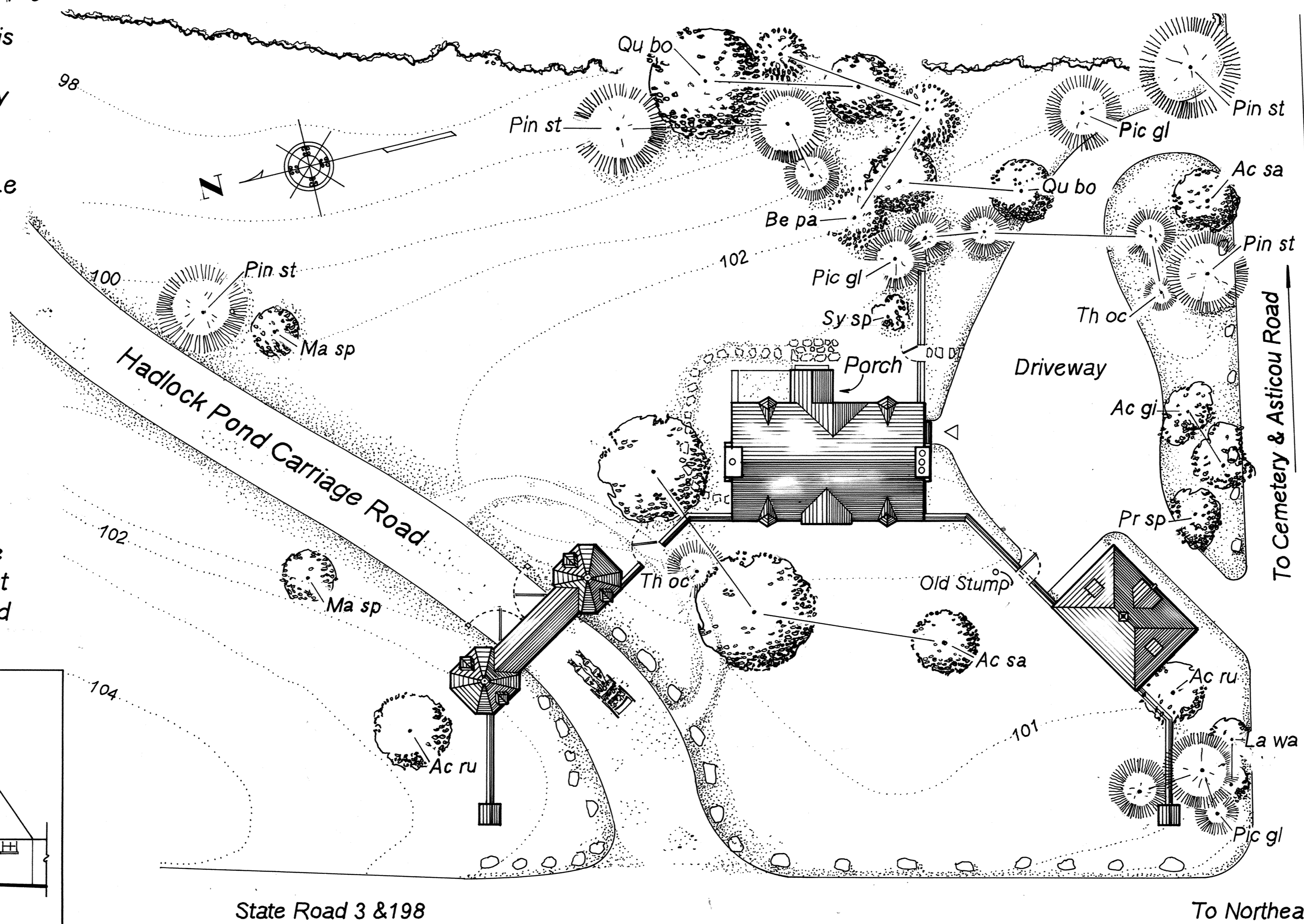
Built by John D. Rockefeller, Jr. to deter motorists from entering his carriage road system, Acadia's gate lodges are two of the most unique structures on Mount Desert Island. They were designed by prominent New York architect Grosvenor Atterbury, who in attempting to recall the island's colonial heritage chose a highly picturesque style reminiscent of the provincial architecture of the Le Puis district in France. After their completion in 1932, Rockefeller donated both gatehouses to the park.

Located just north of Northeast Harbor near Lower Hadlock Pond, the Brown Mountain Gate Lodge rests on a semi-octagonal foundation that reflects the shape of its monumental gate-towers. The high masonry wall bordering the front of the structure, as well as the positioning of the entrance and garage behind it, result in a nearly unbroken facade intended to draw the visitor's attention towards the gate.

The original design for the Brown Mountain Gate Lodge located the entranceway in front facing Maine Route 3 and included a bell post that was eventually incorporated into the plans for the Jordan Pond Gate Lodge.



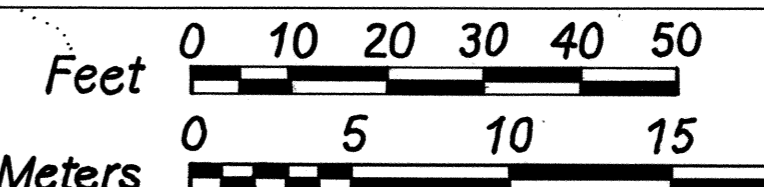
Entrance and Keeper's Lodge (First proposal December 31, 1930)



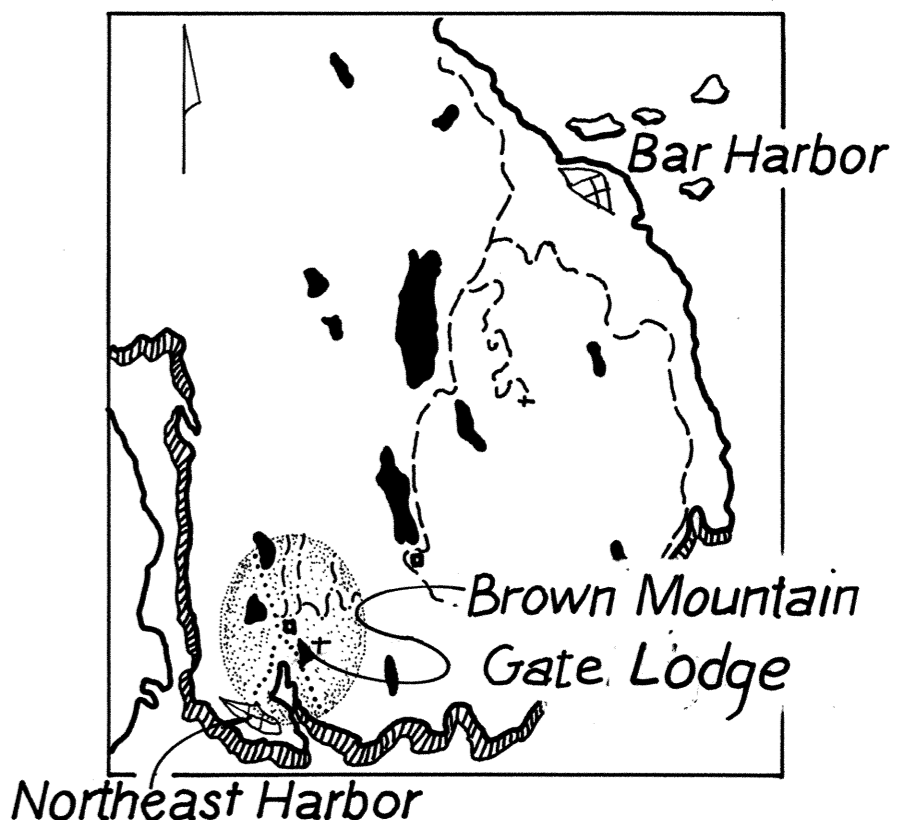
Site Plan

scale 1"=20'-0"

U.T.M. 19/556990/4906490



Note: laid flat
 Feet 0 5 10 15 20 25
 Meters 0 1 2 3 4 5

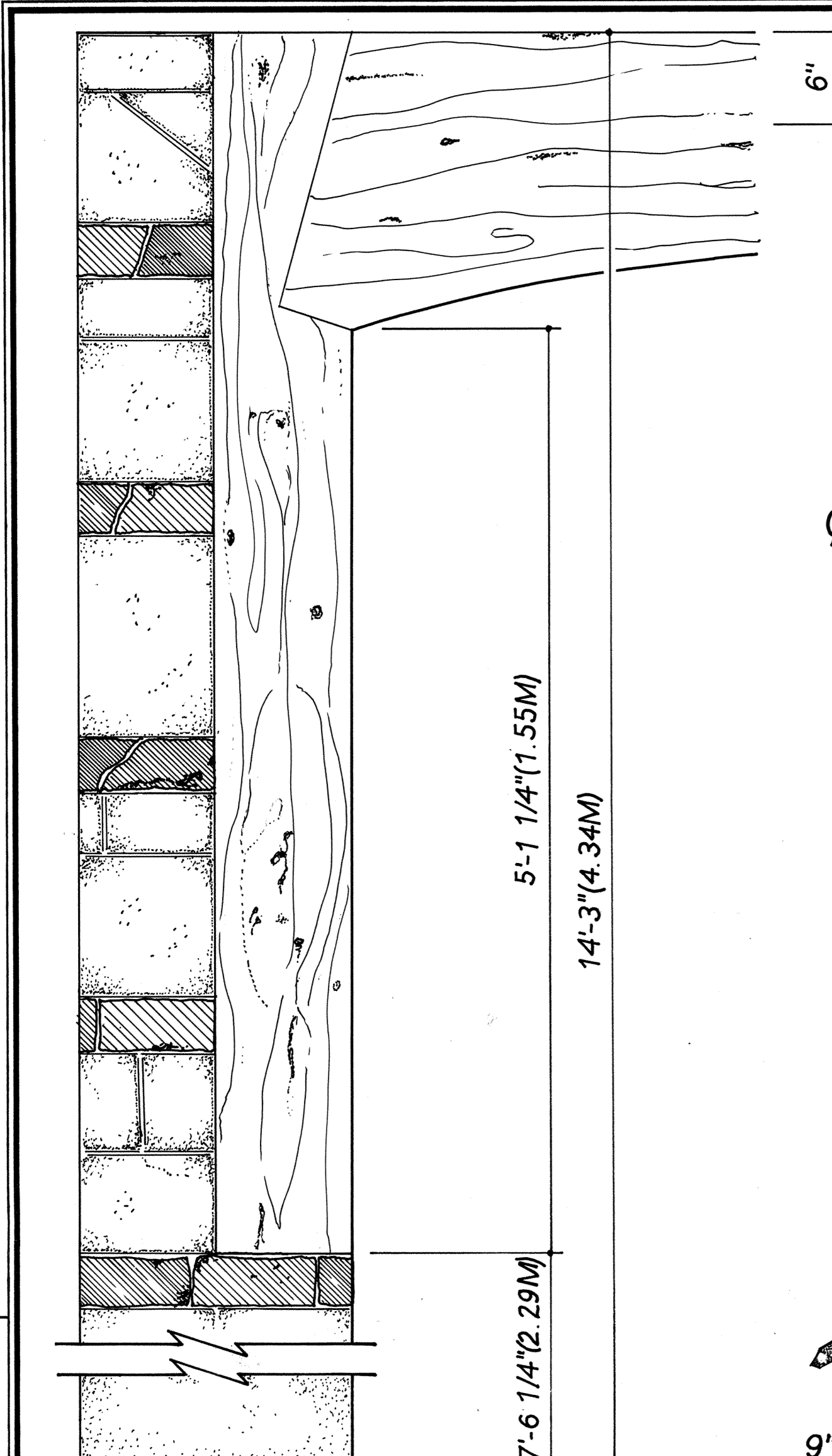
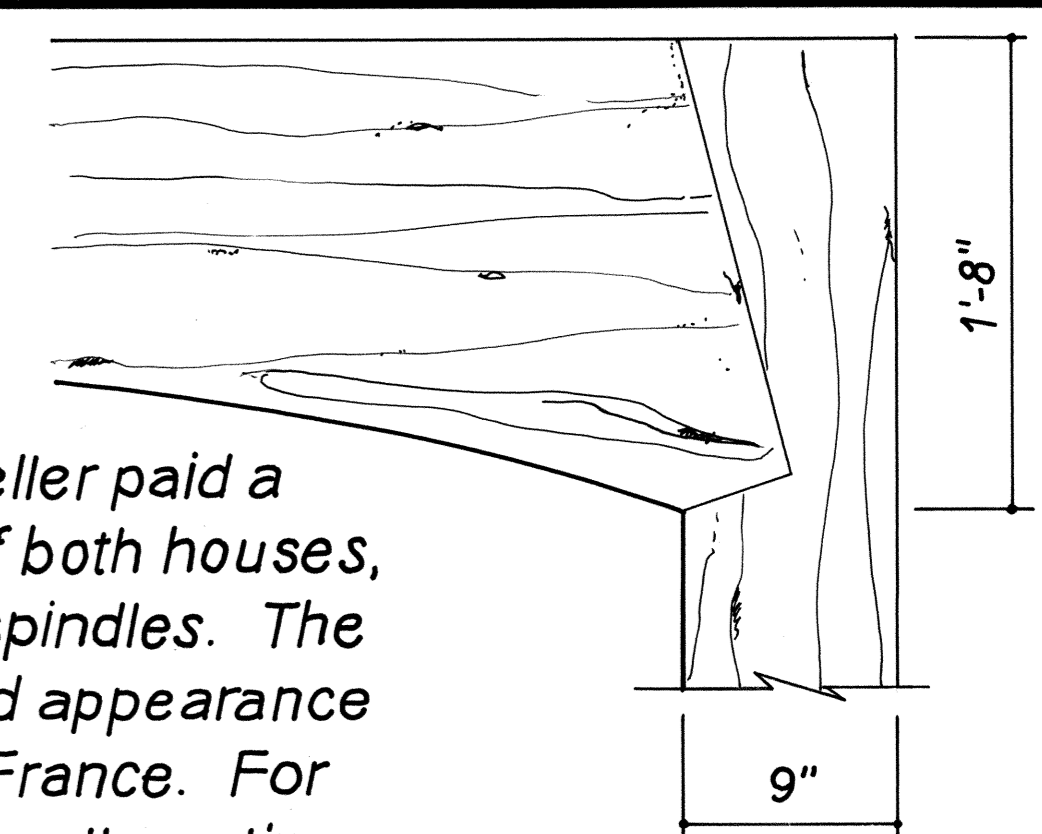


Rockefeller asked landscape gardener Beatrix Farrand for advice concerning the plantings around the Brown Mountain Gate Lodge. Although she at first advocated screening the driveway and entrance area on the south side of the complex from view with a grassy mound, she later decided, along with Atterbury, to use plantings instead.

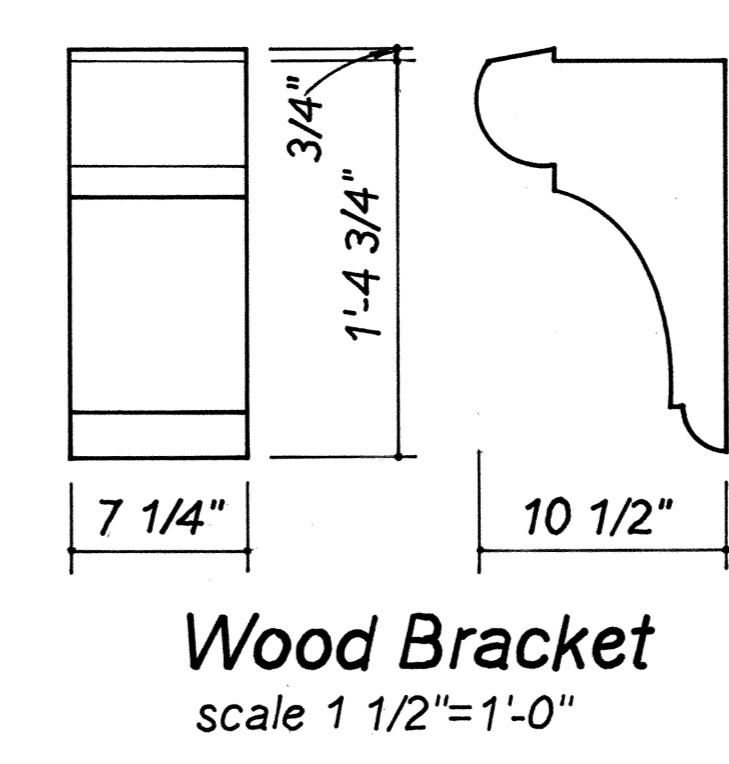
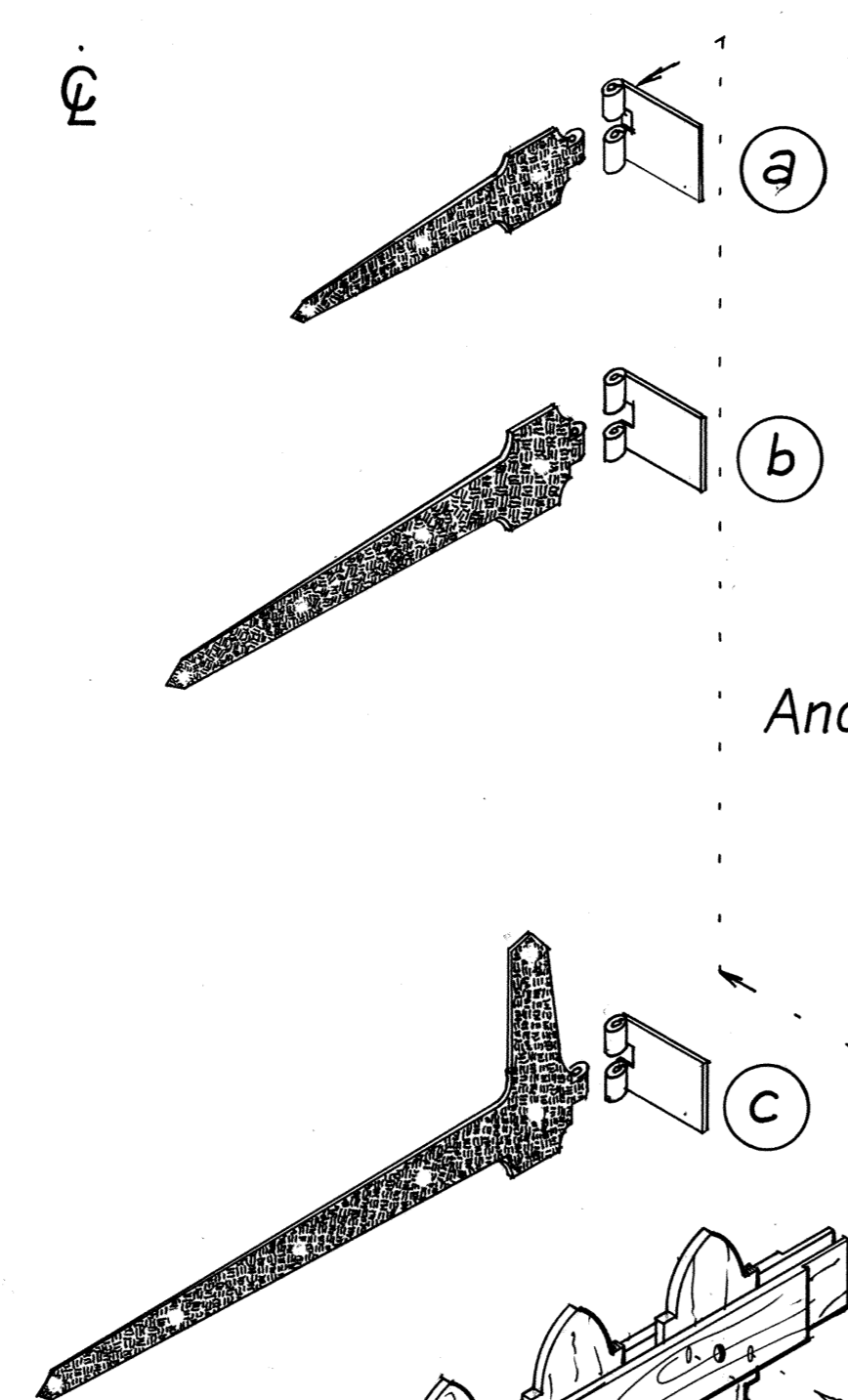
Key	Botanic Name	Common Name
Ac gi	Acer ginnala	Amur Maple
Ac ru	" rubrum	Red Maple
Ac sa	" saccharum	Sugar Maple
Be pa	Betula papyrifera	Paper Birch
La wa	Laburnum waterari	Walterer Laburnum
Ma sp	Malus species	Crabapple sp.
Pic gl	Picea glauca	White Spruce
Pin st	Pinus strobus	Eastern White Pine
Pr sp	Prunus species	Cherry sp.
Qu bo	Quercus borealis	Red Oak
Sy sp	Syringa species	Lilac sp.
Th oc	Thuja occidentalis	Eastern Arborvitae

BROWN MOUNTAIN GATELODGE

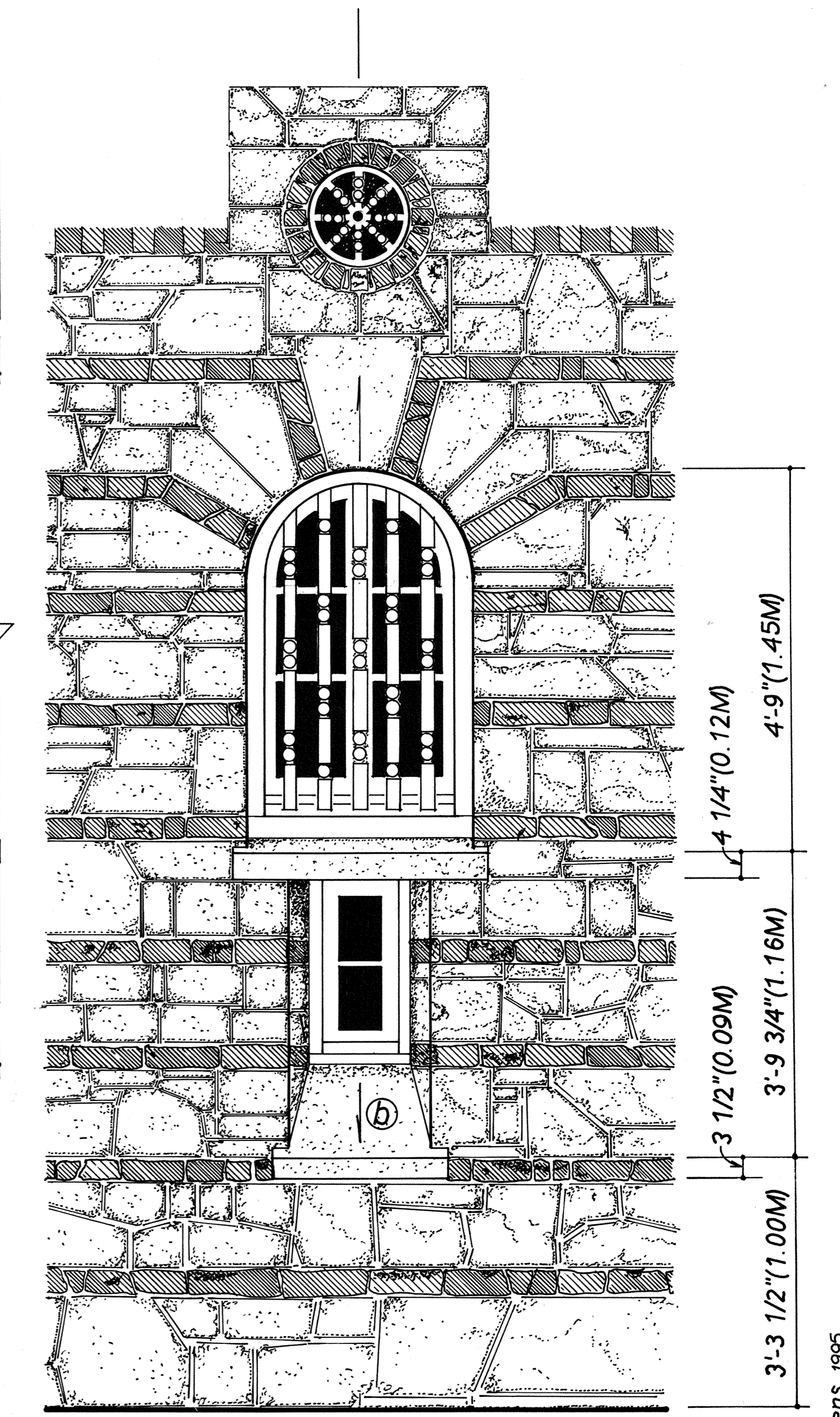
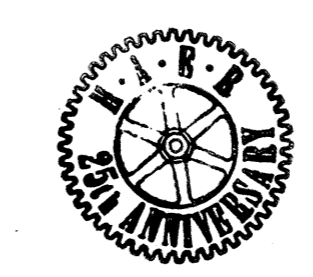
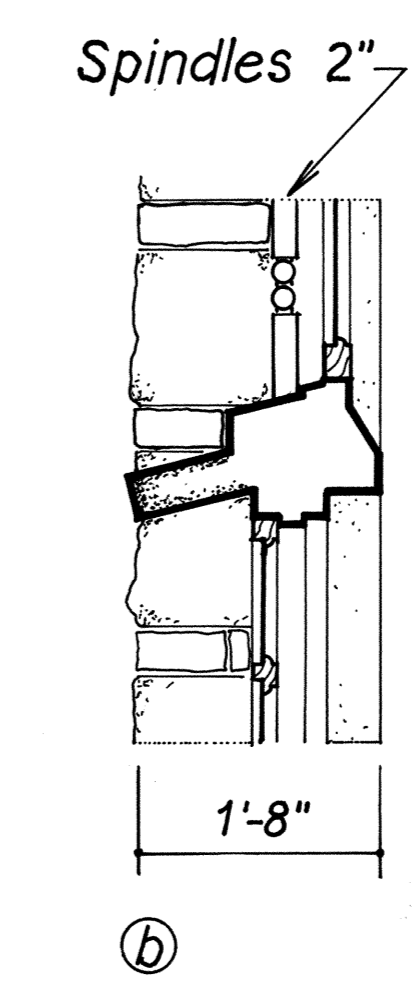
In designing Acadia's gate lodges, Atterbury and Rockefeller paid a great deal of attention to details. Many of the windows of both houses, for instance, are screened by intricately carved wooden spindles. The ground floor masonry of both structures also has a striped appearance that resembles the architecture of the Le Puis district in France. For the Brown Mountain Gate Lodge this look was achieved by alternating wider bands of local granite with handmade red bricks from Virginia and Holland.



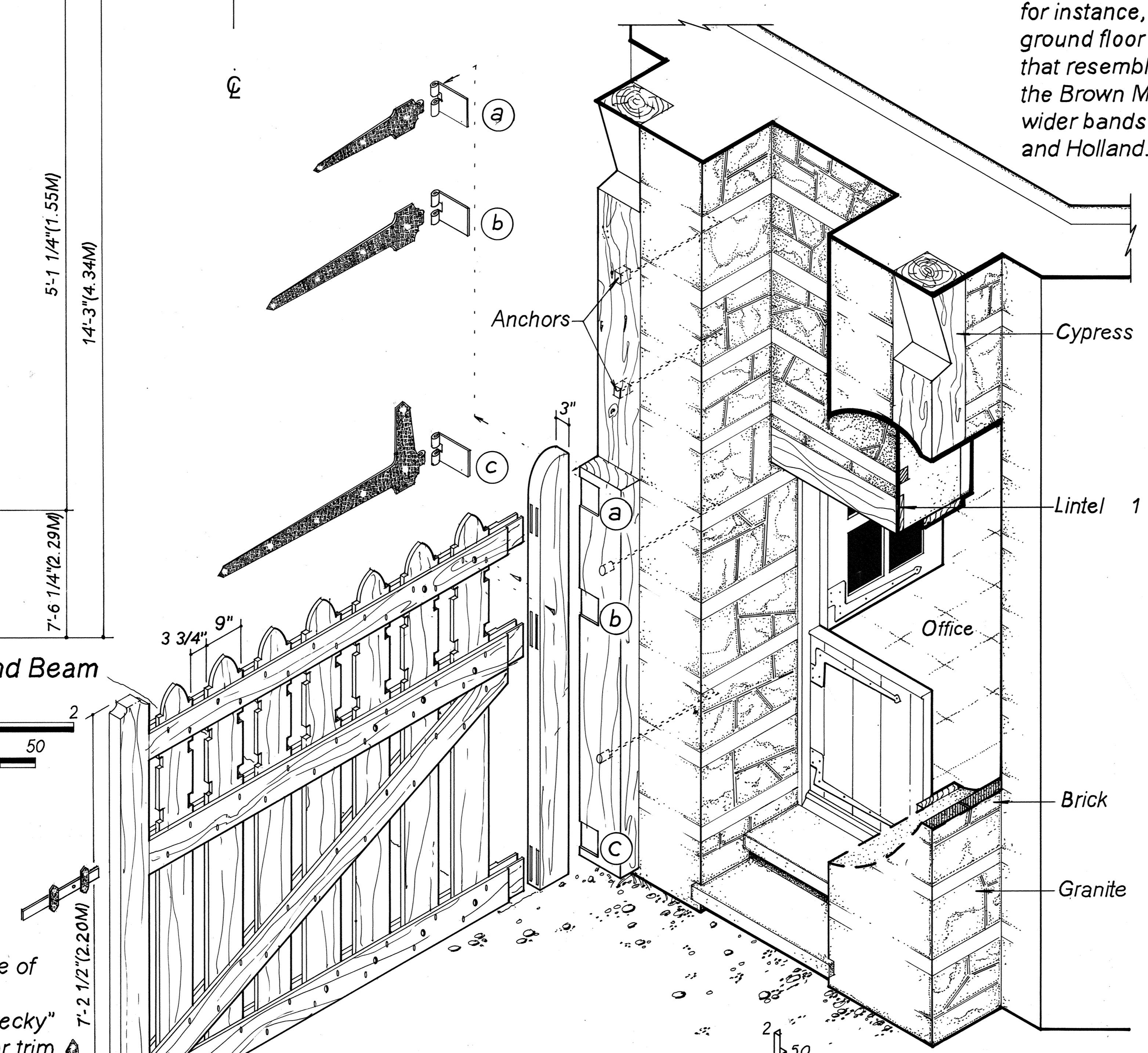
Gate Post and Beam
scale 1 1/2"=1'-0"
Feet 0 1 2
Centimeters 0 50



Wood Bracket
scale 1 1/2"=1'-0"



Gate-Tower
scale 3/4"=1'-0"
Feet 0 1 2 3 4 5
Centimeters 0 50 100 150



Gate

The rustic appearance of both gate lodges was enhanced by using "pecky" cypress for all exterior trim including posts and beams, brackets, and the gates themselves. This timber was scorched before construction to give it an aged, weathered look.

51
TAER B 19



APR. 16. ME. 1931

LOWE B 24
AER



TO KING
BY ME
→

AER N. ME. 53.2

PLATE B
1918



1918 W. M. S. S.



1918

HERN. ME. 63.4

HAER No ME-53-5

