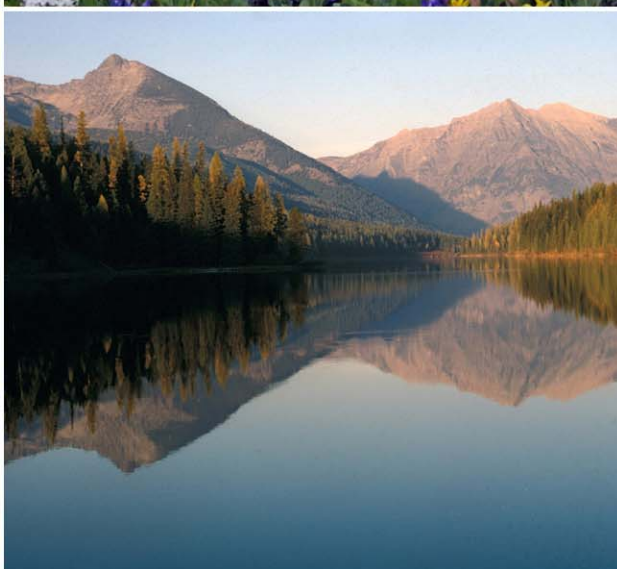




Evaluation of the Sensitivity of Inventory and Monitoring National Parks to Nutrient Enrichment Effects from Atmospheric Nitrogen Deposition

Mojave Desert Network (MOJN)

Natural Resource Report NPS/NRPC/ARD/NRR—2011/316



ON THE COVER

Some ecosystems, such as arid shrublands, subalpine meadows, remote high elevation lakes, and wetlands, are sensitive to the effects of nutrient enrichment from atmospheric nitrogen deposition.

Photograph by: National Park Service

Evaluation of the Sensitivity of Inventory and Monitoring National Parks to Nutrient Enrichment Effects from Atmospheric Nitrogen Deposition

Mojave Desert Network (MOJN)

Natural Resource Report NPS/NRPC/ARD/NRR—2011/316

T. J. Sullivan
T. C. McDonnell
G. T. McPherson
S. D. Mackey
D. Moore

E&S Environmental Chemistry, Inc.
P.O. Box 609
Corvallis, OR 97339

February 2011

U.S. Department of the Interior
National Park Service
Natural Resource Program Center
Denver, Colorado

The National Park Service, Natural Resource Program Center publishes a range of reports that address natural resource topics of interest and applicability to a broad audience in the National Park Service and others in natural resource management, including scientists, conservation and environmental constituencies, and the public.

The Natural Resource Report Series is used to disseminate high-priority, current natural resource management information with managerial application. The series targets a general, diverse audience, and may contain NPS policy considerations or address sensitive issues of management applicability.

All manuscripts in the series receive the appropriate level of peer review to ensure that the information is scientifically credible, technically accurate, appropriately written for the intended audience, and designed and published in a professional manner.

This report received peer review by subject-matter experts who were not directly involved in the collection, analysis, or reporting of the data. Data in this report were collected and analyzed using methods based on established, peer-reviewed protocols and were analyzed and interpreted within the guidelines of the protocols.

Views, statements, findings, conclusions, recommendations, and data in this report do not necessarily reflect views and policies of the National Park Service, U.S. Department of the Interior. Mention of trade names or commercial products does not constitute endorsement or recommendation for use by the U.S. Government.

This report is available from Air Resources Division of the NPS (<http://www.nature.nps.gov/air/Permits/ARIS/networks/n-sensitivity.cfm>) and the Natural Resource Publications Management website (<http://www.nature.nps.gov/publications/nrpm/>).

Please cite this publication as:

Sullivan, T. J., T. C. McDonnell, G. T. McPherson, S. D. Mackey, and D. Moore. 2011. Evaluation of the sensitivity of inventory and monitoring national parks to nutrient enrichment effects from atmospheric nitrogen deposition: Mojave Desert Network (MOJN). Natural Resource Report NPS/NRPC/ARD/NRR—2011/316. National Park Service, Denver, Colorado.

Mojave Desert Network (MOJN)

National maps of atmospheric N emissions and deposition are provided in Maps A and B as context for subsequent network data presentations. Map A shows county level emissions of total N for the year 2002. Map B shows total N deposition, again for the year 2002.

There are five parks in the Mojave Desert Network that are larger than 100 square miles: Death Valley (DEVA), Great Basin (GRBA), Joshua Tree (JOTR), Lake Mead (LAME), and Mojave (MOJA). There is only one park smaller than 100 square miles: Manzanar (MANZ).

Total annual N emissions, by county, are shown in Map C for lands in and surrounding the Mojave Desert Network. County-level emissions within the network ranged from less than 1 ton per square mile to between 5 and 20 tons per square mile in the southwestern corner of the network. In general, annual N emissions were less than 1 ton per square mile in the north in and around DEVA, and 1 to 5 tons per square mile in the south, including the locations of JOTR, MOJA, and parts of LAME. Point source emissions of oxidized (nitrogen oxides, NO_x) and reduced (ammonia, NH_3) N are shown in Map D. There are only two relatively large (larger than about 2,500 tons per year) N point sources within this network. Both are sources of oxidized N. Outside the network boundary, the larger point sources are mainly downwind to the east. Urban centers within the network and within a 300 mile buffer around the network are shown in Map E. There are several population centers larger than 100,000 people in the network, near LAME. Few other population centers of any magnitude occur within the network. Nevertheless, the Los Angeles basin and San Diego areas are very close to the southwestern network boundary.

Total N deposition in and around the network is shown in Map F. Included in this analysis are both wet and dry forms of N deposition and both the oxidized and reduced N species. Total N deposition within the network ranged from less than 2 kg N/ha/yr at some of the coastal areas in the northern part of the network to as high as 5 to 15 kg N/ha/yr in the southwestern corner of the network.

Land cover in and around the network is shown in Map G. The predominant cover type within this network is generally shrublands.

Map H shows the distribution within the larger (larger than 100 square miles) parks that occur in this network of the five vegetation types thought to be most responsive to nutrient N enrichment effects (arctic, alpine, grassland and meadow, wetland, and arid and semi-arid). The predominant sensitive vegetation type within these parks is arid and semi-arid vegetation.

Park lands requiring special protection against potential adverse impacts associated with nutrient N enrichment from atmospheric N deposition are shown in Map I. Also shown on Map I are all federal lands designated as wilderness, both lands managed by NPS and also lands managed by other federal agencies. The land designations used to identify this heightened protection included Class I designation under the CAAA and wilderness designation. JOTR is classified as Class I, and much of it is also designated wilderness. Much of LAME is also Class I. DEVA, MOJA, and LAME also include substantial amounts of designated wilderness. There are large areas of designated wilderness outside NPS jurisdiction throughout much of the southwestern half of this network.

Network rankings are given in Figures A through C as the average ranking of the Pollutant Exposure, Ecosystem Sensitivity, and Park Protection metrics, respectively. Figure D shows the overall network Summary Risk ranking. In each figure, the rank for this particular network is highlighted to show its relative position compared with the ranks of the other 31 networks.

The Mojave Desert Network ranks near the top of the second lowest quintile, among networks, in N Pollutant Exposure (Figure A). Nitrogen emissions and N deposition within the network are both fairly low. However, the network Ecosystem Sensitivity ranking is relatively high, at the bottom of the highest quintile among networks (Figure B). This is mainly because there is substantial arid and semi-arid vegetation in this network. These vegetation types are among those expected to be especially sensitive to nutrient enrichment effects from N deposition. This network ranks at the top of the second highest quintile in Park Protection, having substantial amounts of protected lands (Figure C).

In combination, the network rankings for Pollutant Exposure, Ecosystem Sensitivity, and Park Protection yield an overall Network Risk ranking that is in the top quintile among all networks (Figure D). The overall level of concern for nutrient N enrichment effects on I&M parks within this network is considered Very High.

Similarly, park rankings are given in Figures E through H for the same metrics. In the case of the park rankings, we only show in the figures the parks that are larger than 100 square miles. Relative ranks for all parks, including the smaller parks, are given in Table A and Appendix B. As for the network ranking figures, the park ranking figures highlight those parks that occur in this network to show their relative position compared with parks in the other 31 networks. Note that the rankings shown in Figures E through H reflect the rank of a given park compared with all other parks, irrespective of size.

The five I&M parks within this network that are larger than 100 square miles are well distributed across the lower half of the spectrum of Pollutant Exposure, from the middle quintile (JOTR and MOJA) to the lowest quintile (GRBA; Figure E). Ecosystem Sensitivity for five of the six I&M parks is ranked in the highest quintile (Figure F) due to the preponderance of desert vegetation. Park Protection is also ranked Very High for all except GRBA and MANZ (Figure G, Table A). Overall, the Summary Park Risk ranking is in the highest quintile for DEVA, JOTR, LAME, and MOJA, but is much lower for GRBA and MANZ (Figure H, Table A).

Table A. Relative rankings of individual I&M parks within the network for Pollutant Exposure, Ecosystem Sensitivity, Park Protection, and Summary Risk from atmospheric nutrient N enrichment.

I&M Parks ² in Network	Relative Ranking of Individual Parks ¹			
	Pollutant Exposure	Ecosystem Sensitivity	Park Protection	Summary Risk
<i>Death Valley</i>	Low	Very High	Very High	Very High
<i>Great Basin</i>	Very Low	Low	Moderate	Very Low
<i>Joshua Tree</i>	Moderate	Very High	Very High	Very High
<i>Lake Mead</i>	Low	Very High	Very High	Very High
Manzanar	Low	Very High	Moderate	Low
<i>Mojave</i>	Moderate	Very High	Very High	Very High

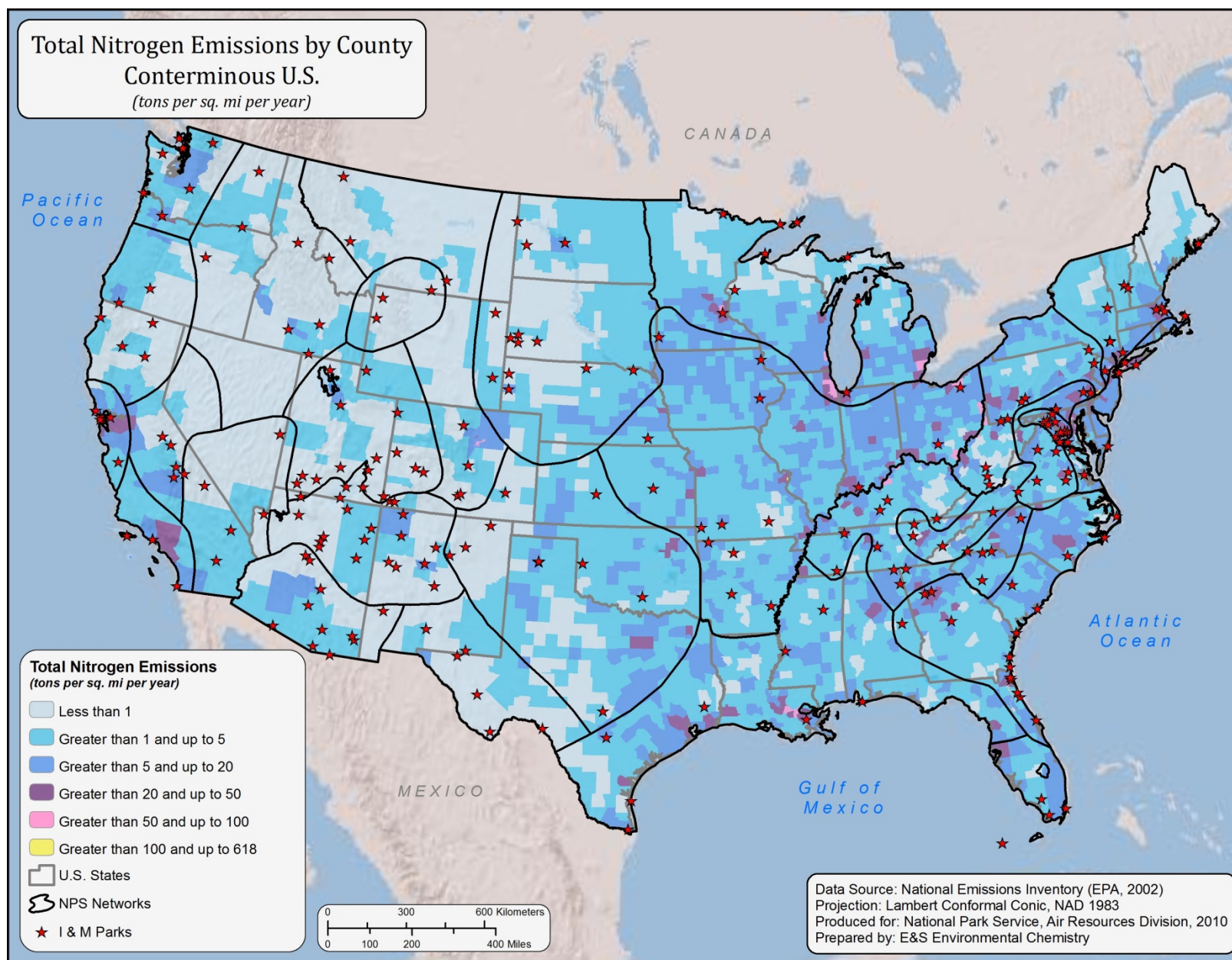
¹ Relative park rankings are designated according to quintile ranking, among all I&M Parks, from the lowest quintile (very low risk) to the highest quintile (very high risk).

² Park name is printed in bold italic for parks larger than 100 square miles.

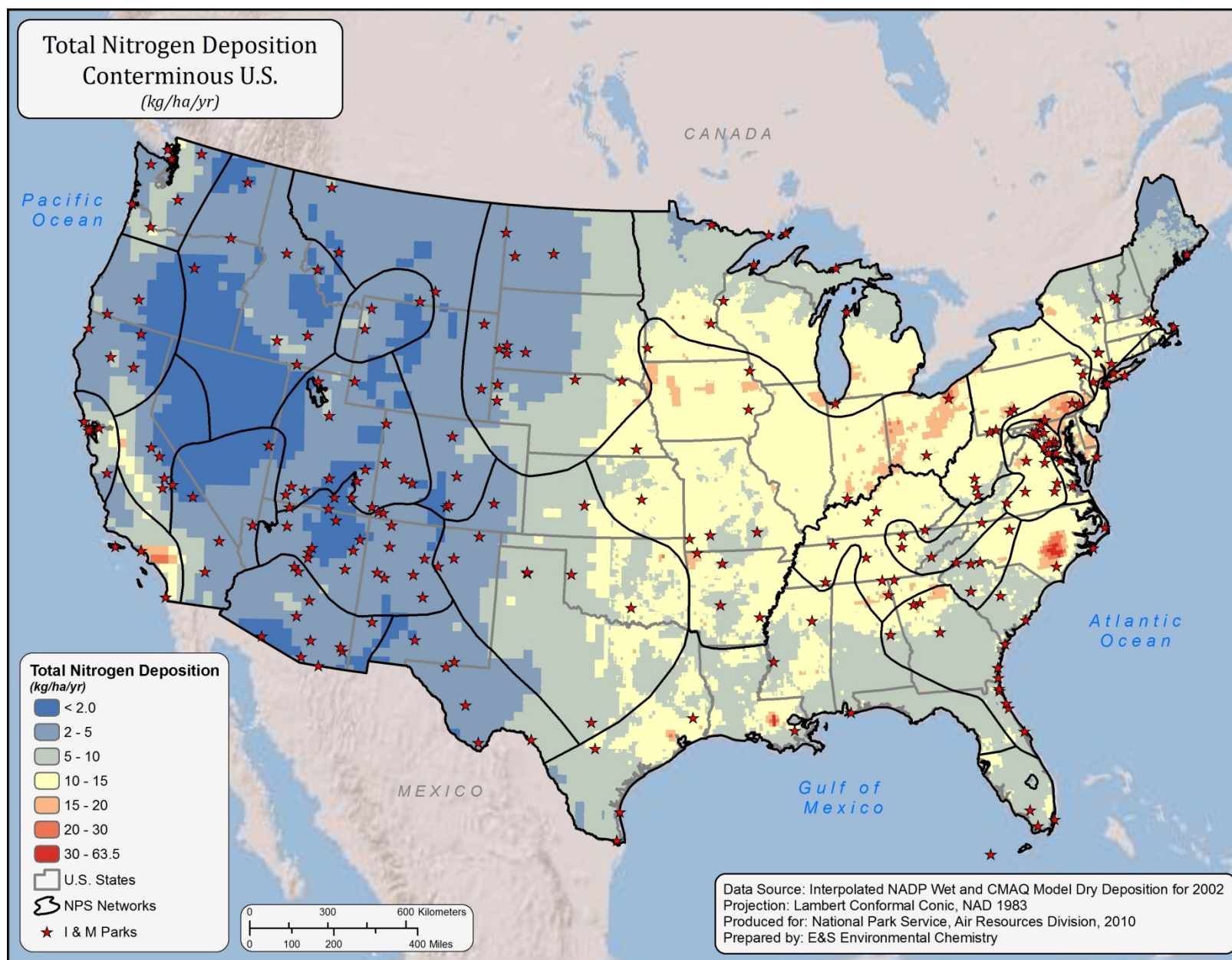
- Map A. National map of total N emissions by county for the year 2002. Both oxidized (nitrogen oxides, NO_x) and reduced (ammonia, NH₃) forms of N are included. The total is expressed in tons per square mile per year. (Source of data: EPA National Emissions Inventory, <http://www.epa.gov/ttn/chief/net/2002inventory.html>)
- Map B. Total N deposition for the conterminous United States for the year 2002, expressed in units of kilograms of N deposited from the atmosphere to the earth surface per hectare per year. Wet and dry forms of both oxidized (nitrogen oxides, NO_x) and reduced (ammonia, NH₃) N are included. For the eastern half of the country, wet deposition values were derived from interpolated measured values from NADP (three-year average centered on 2002) and dry deposition values were derived from 12-km CMAQ model projections for 2002. For the western half of the country, both wet and dry deposition values were derived from 36-km CMAQ model projections for 2002. NADP interpolations were performed using the approach of Grimm and Lynch (1997). CMAQ model projections were provided by Robin Dennis, U.S. EPA.
- Map C. Total N emissions by county for lands surrounding the network, expressed as tons of N emitted into the atmosphere per square mile per year. The total includes both oxidized (nitrogen oxides, NO_x) and reduced (ammonia, NH₃) N. (Source of data: EPA National Emissions Inventory, <http://www.epa.gov/ttn/chief/net/2002inventory.html>)
- Map D. Major point source emissions of oxidized (nitrogen oxides, NO_x) and reduced (ammonia, NH₃) N in and around the network. The base of each vertical bar is positioned in the map at the approximate location of the source. The height of the bar is proportional to the magnitude of the source. (Source of data: EPA National Emissions Inventory, <http://www.epa.gov/ttn/chief/net/2002inventory.html>)

- Map E. Urban centers having more than 10,000 people within the network and within a 300-mile buffer around the perimeter of the network. (Source of data: U.S. Census 2000)
- Map F. Total N deposition in and around the network. Included in the total are wet plus dry forms of both oxidized (nitrogen oxides, NO_x) and reduced (ammonia, NH₃) N. Values are expressed as kilograms of N deposited per hectare per year. (Source of data: CMAQ Model wet and dry deposition data for 2002; see information for Map B above for details)
- Map G. Land cover types in and around the network, based on the National Land Cover dataset. (Source of data: National Land Cover Dataset, http://www.mrlc.gov/nlcd_multizone_map.php)
- Map H. Distribution within the larger parks that occur in this network of the five terrestrial vegetation types thought to be most sensitive to N nutrient enrichment effects: arctic, alpine, meadow, wetland, and arid and semi-arid. (Source of data: See Appendix A)
- Map I. Lands within the network that are classified as Class I or wilderness area. (Source of data: USGS 2005 [National Atlas; <http://nationalatlas.gov>] and NPS)
- Figure A. Network rankings for Pollutant Exposure, calculated as the average of scores for all Pollutant Exposure variables.
- Figure B. Network rankings for Ecosystem Sensitivity, calculated as the average of scores for all Ecosystem Sensitivity variables.
- Figure C. Network rankings for Park Protection, calculated as the average of scores for all Park Protection variables.
- Figure D. Network Summary Risk ranking, calculated as the sum of the averages of the scores for Pollutant Exposure, Ecosystem Sensitivity, and Park Protection.
- Figure E. Park rankings for Pollutant Exposure for all parks larger than 100 square miles. Ranks for each park were calculated relative to all parks, regardless of size, as the average of scores for all Pollutant Exposure variables.
- Figure F. Park rankings for Ecosystem Sensitivity for all parks larger than 100 square miles. Ranks for each park were calculated relative to all parks, regardless of size, as the average of scores for all Ecosystem Sensitivity variables.
- Figure G. Park rankings for Park Protection for all parks larger than 100 square miles. Ranks for each park were calculated relative to all parks, regardless of size, as the average of scores for all Park Protection variables.

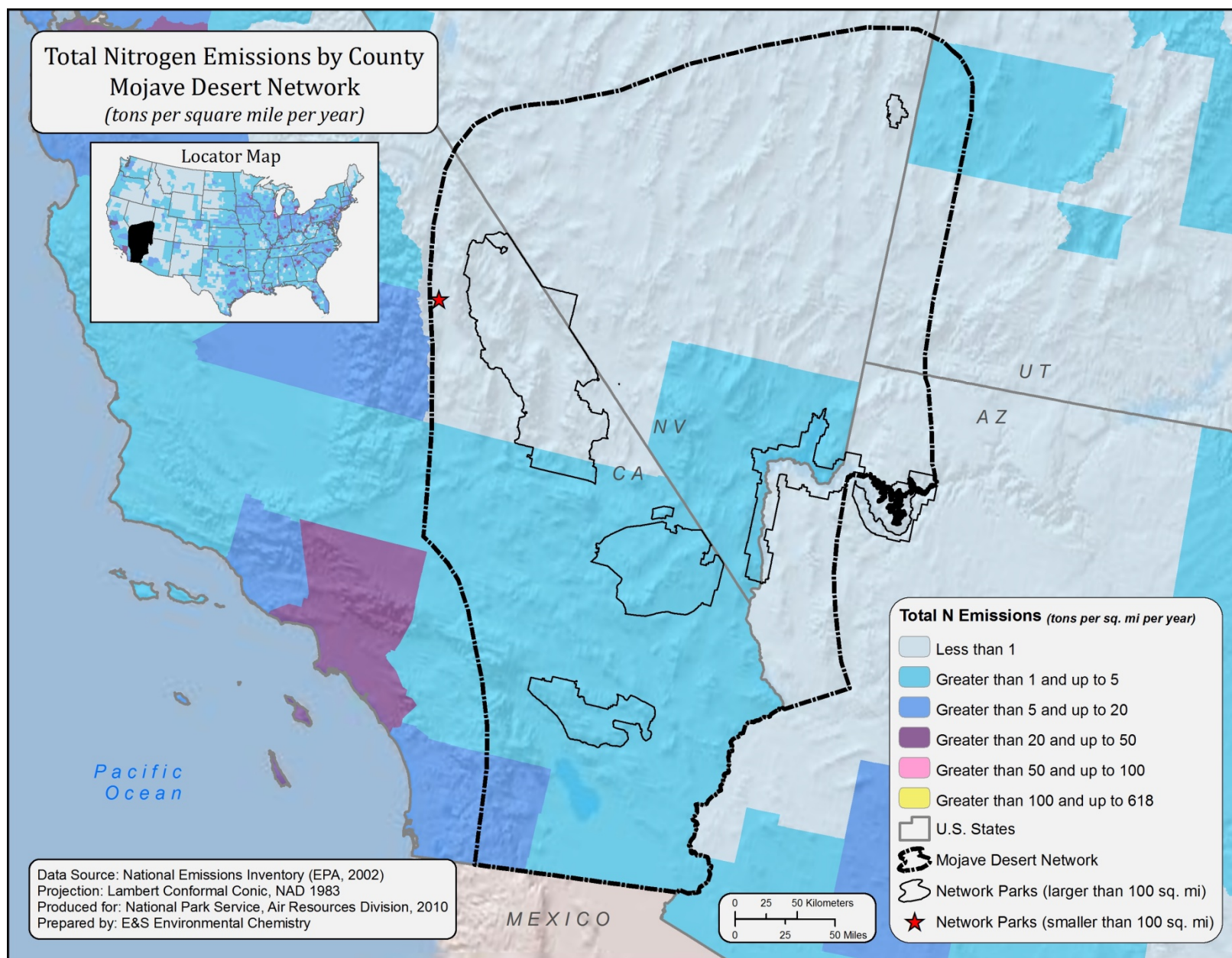
Figure H. Park rankings for Summary Risk for all parks larger than 100 square miles. Ranks for each park were calculated relative to all parks, regardless of size, as the average of scores for all Summary Risk variables.



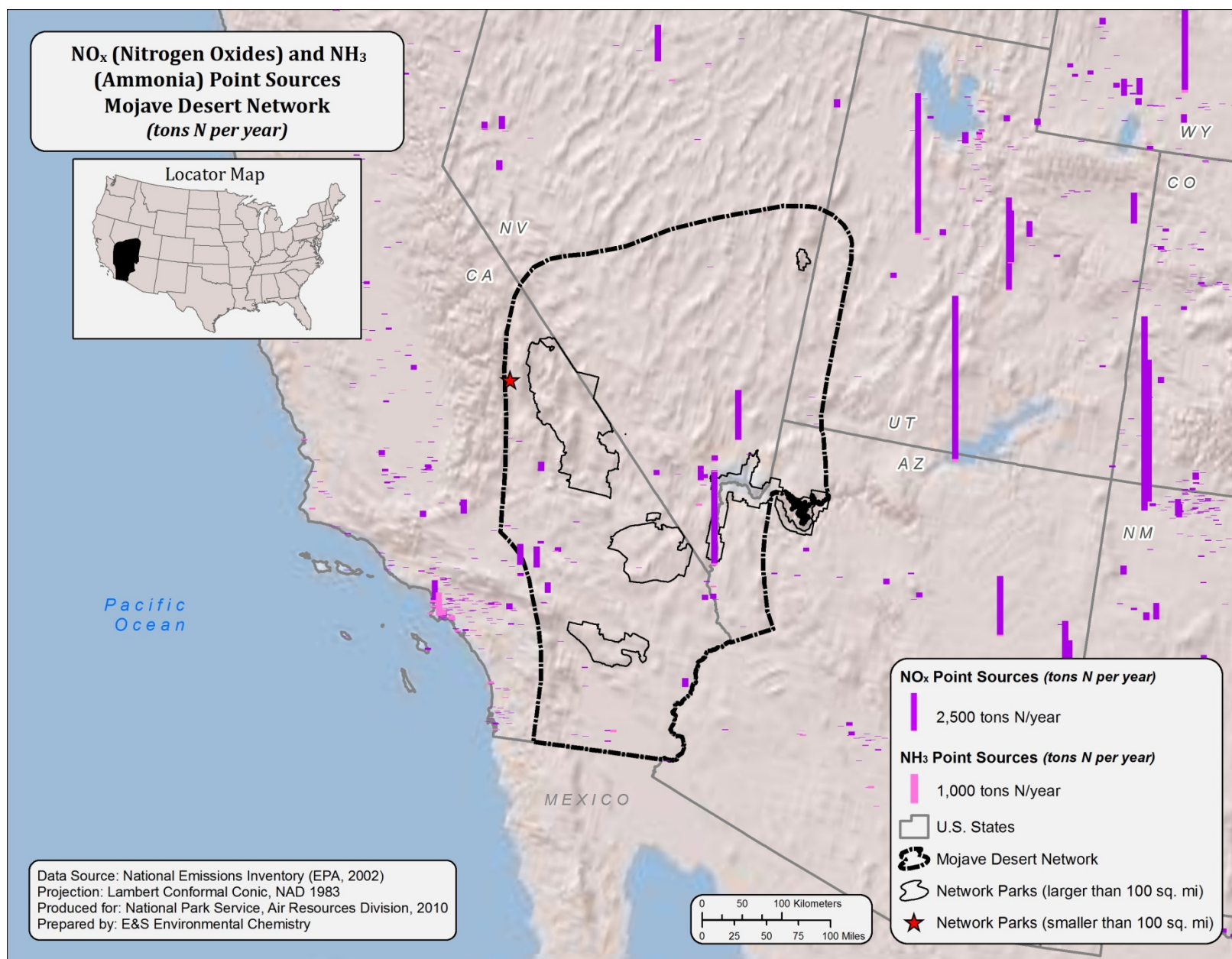
Map A



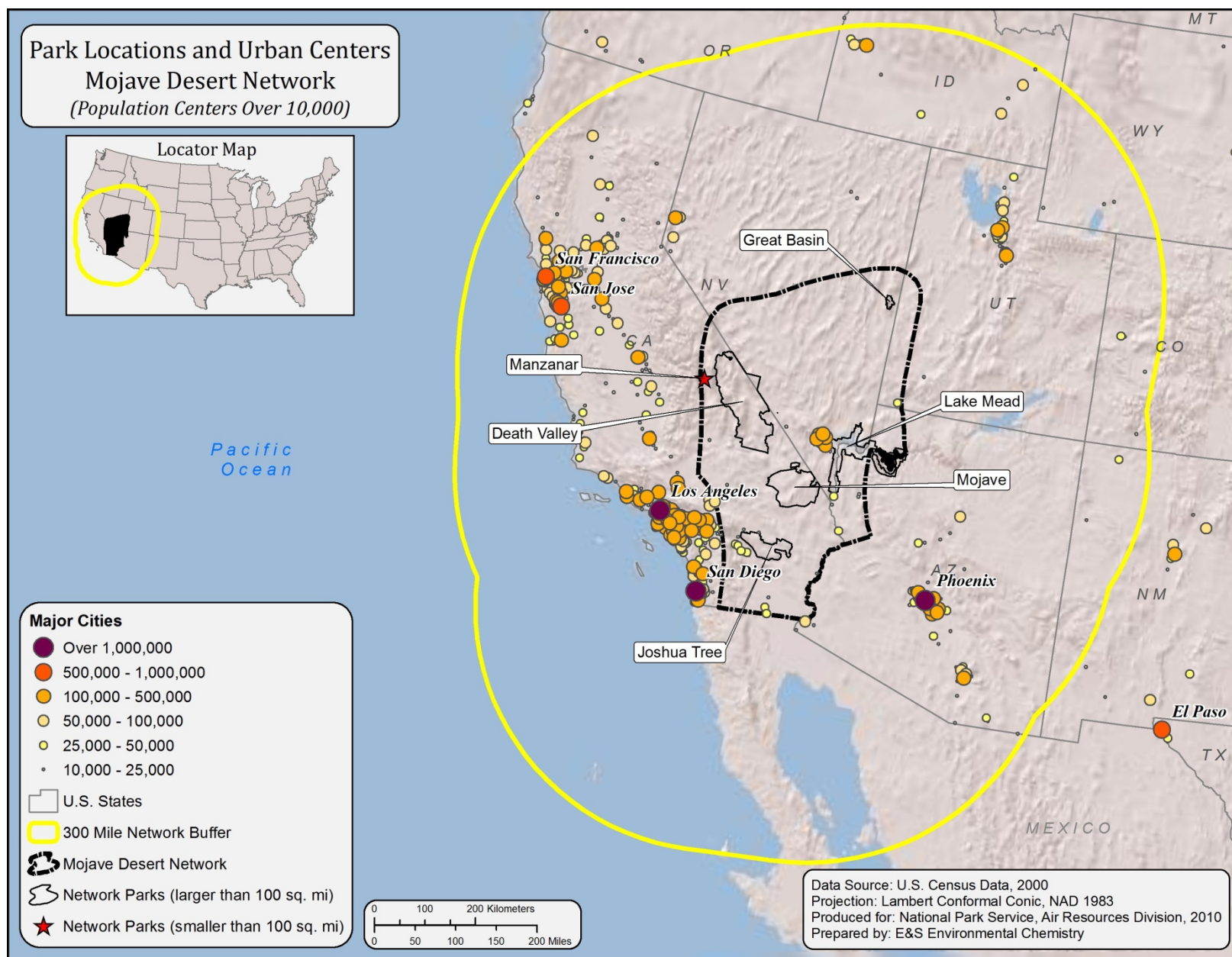
Map B



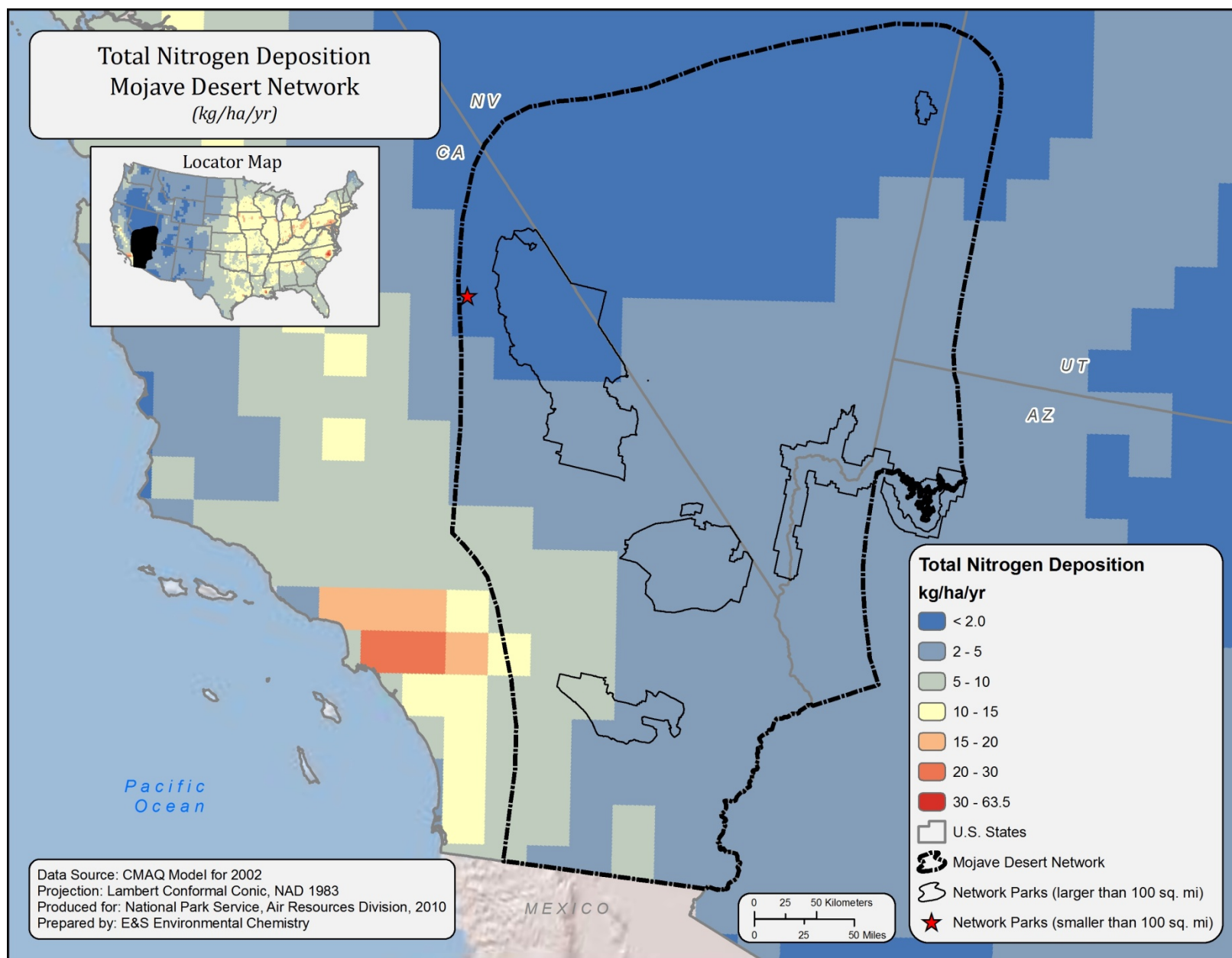
Map C



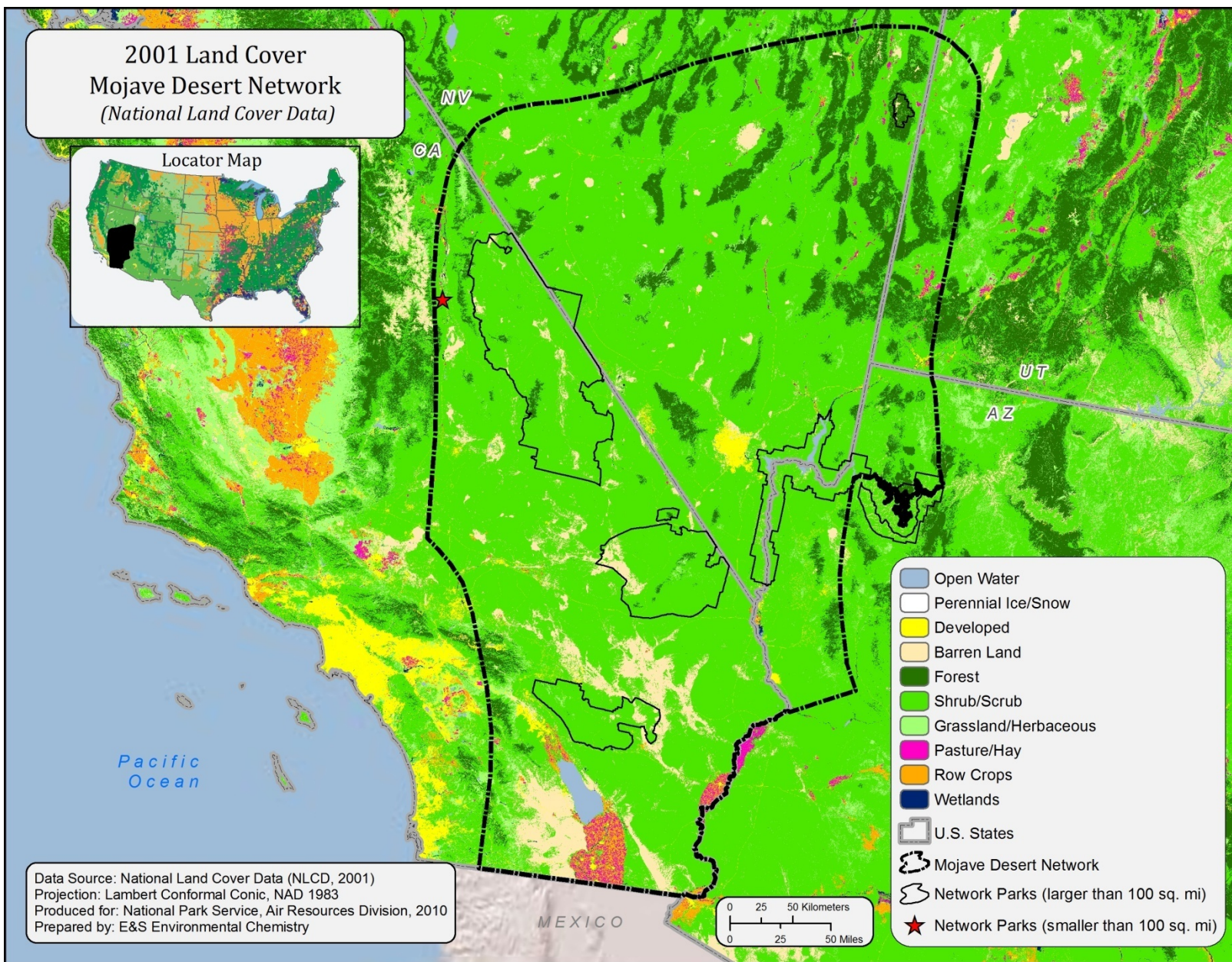
Map D



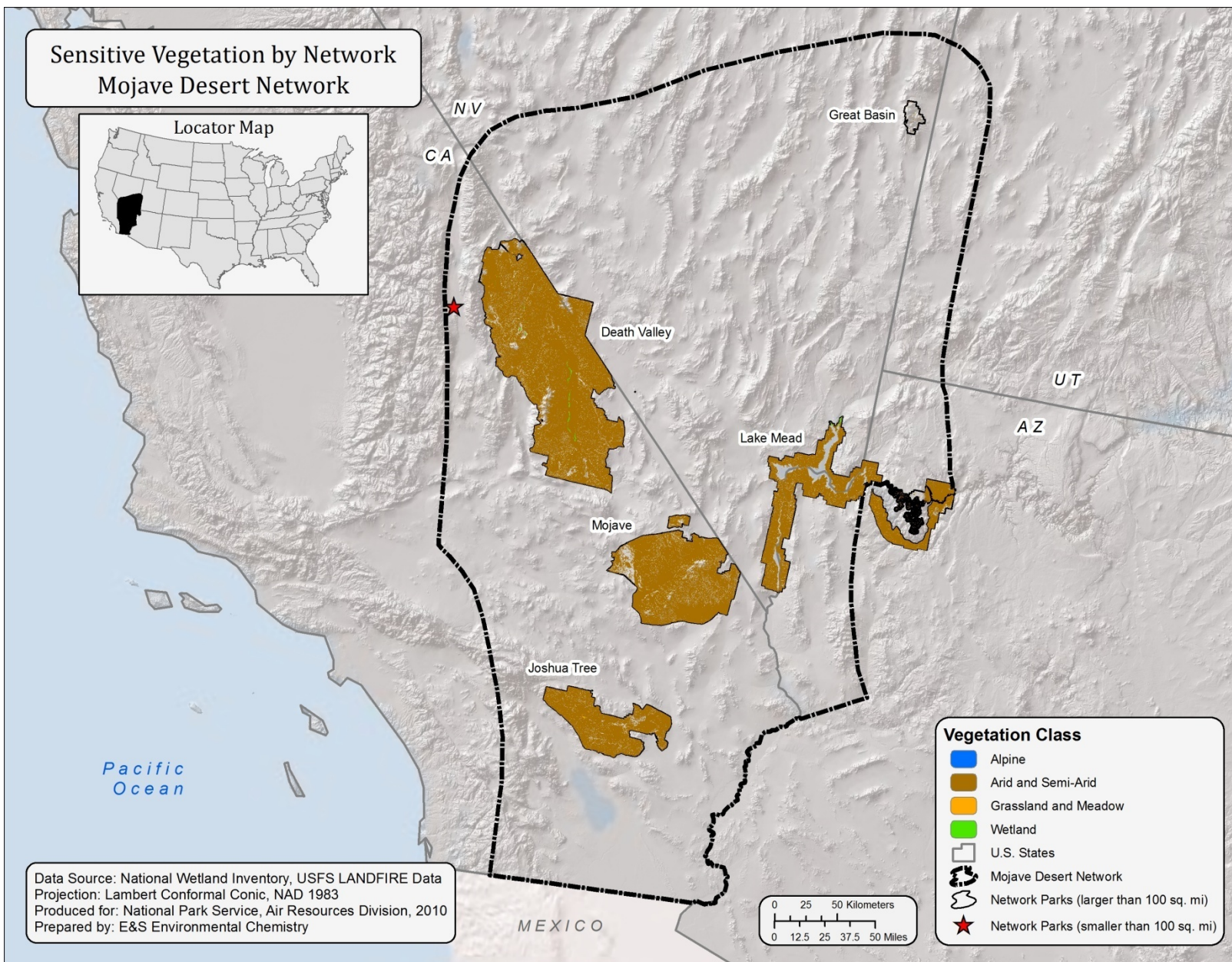
Map E



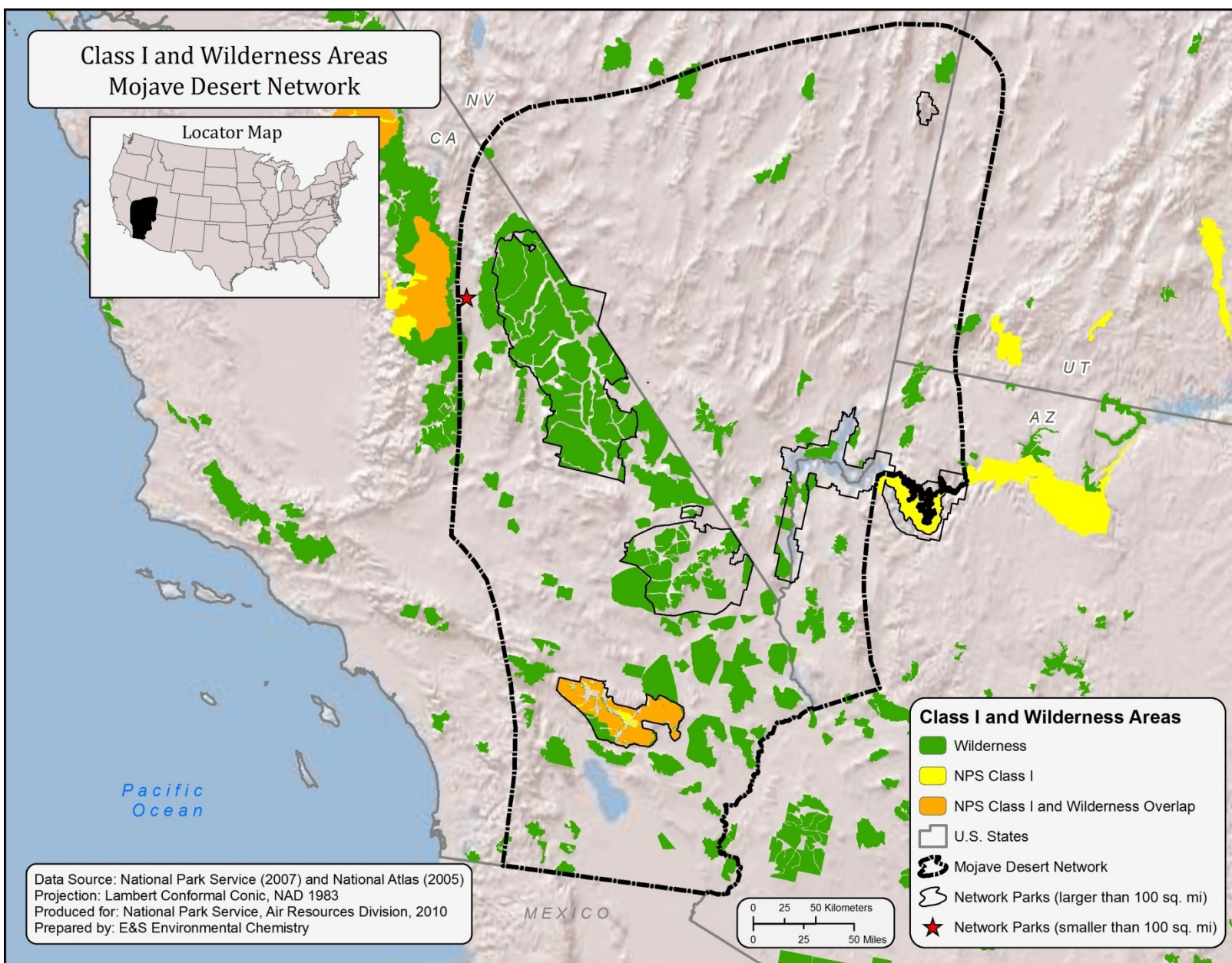
Map F



Map G



Map H



Map I

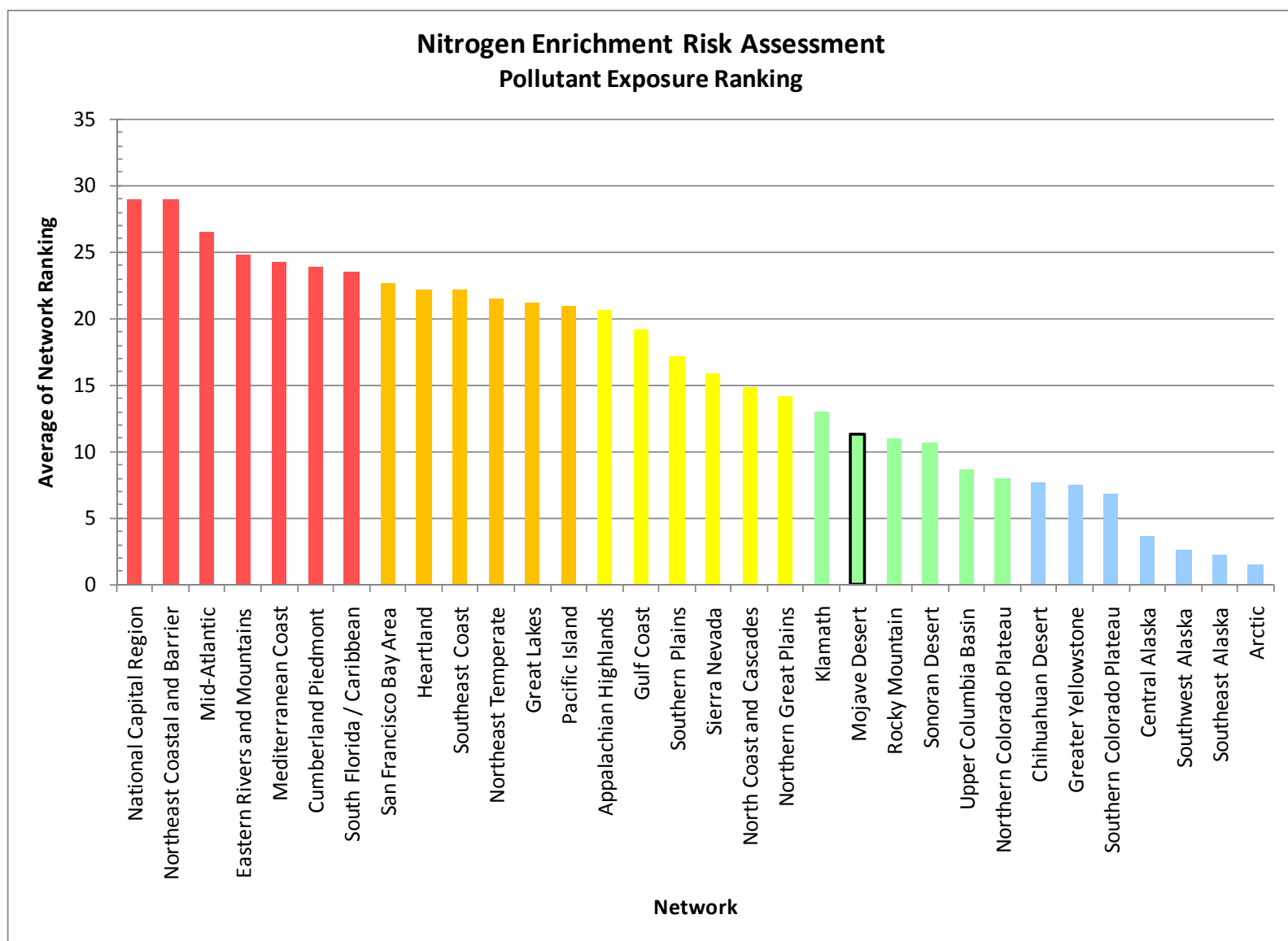


Figure A

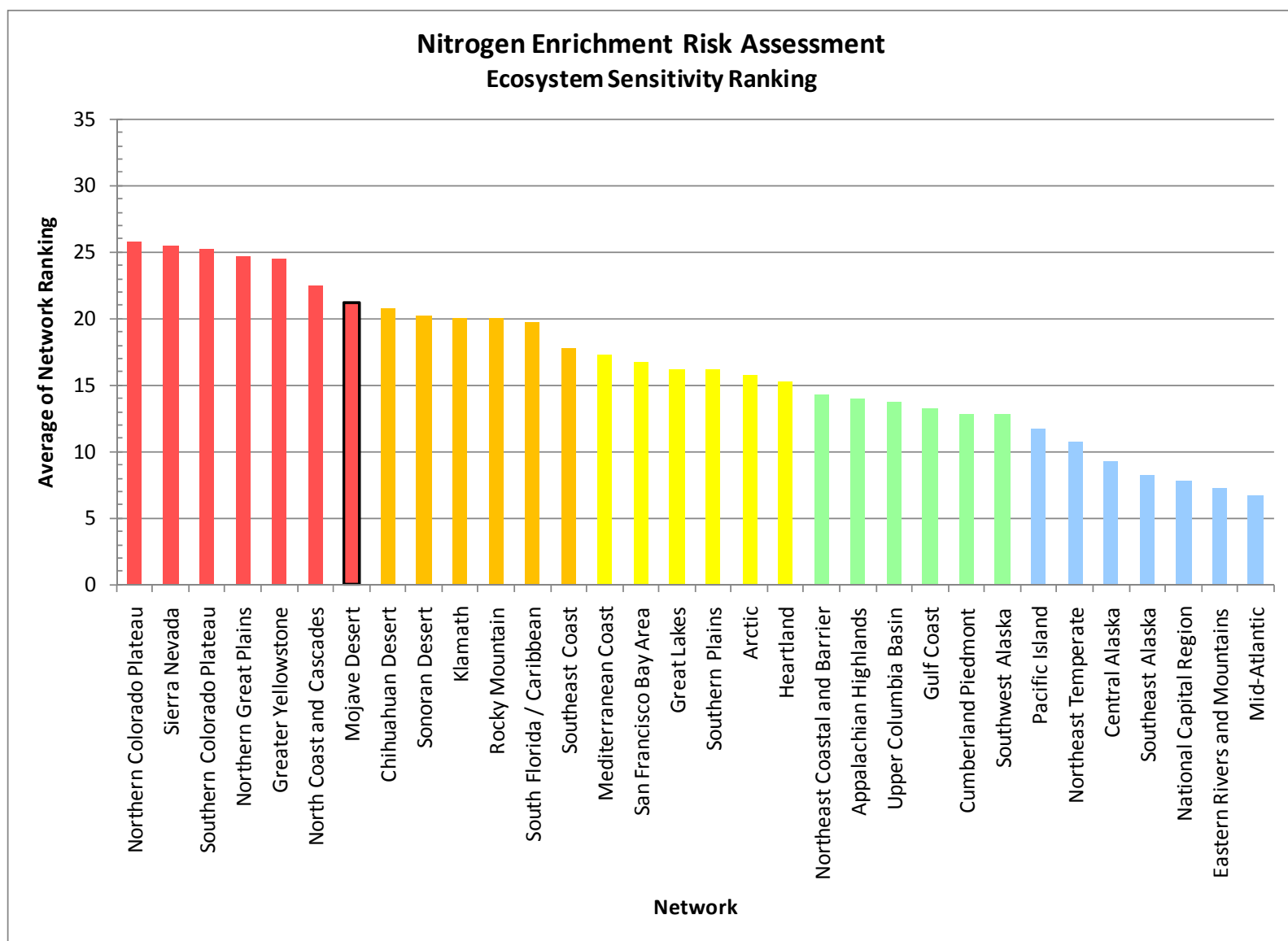


Figure B

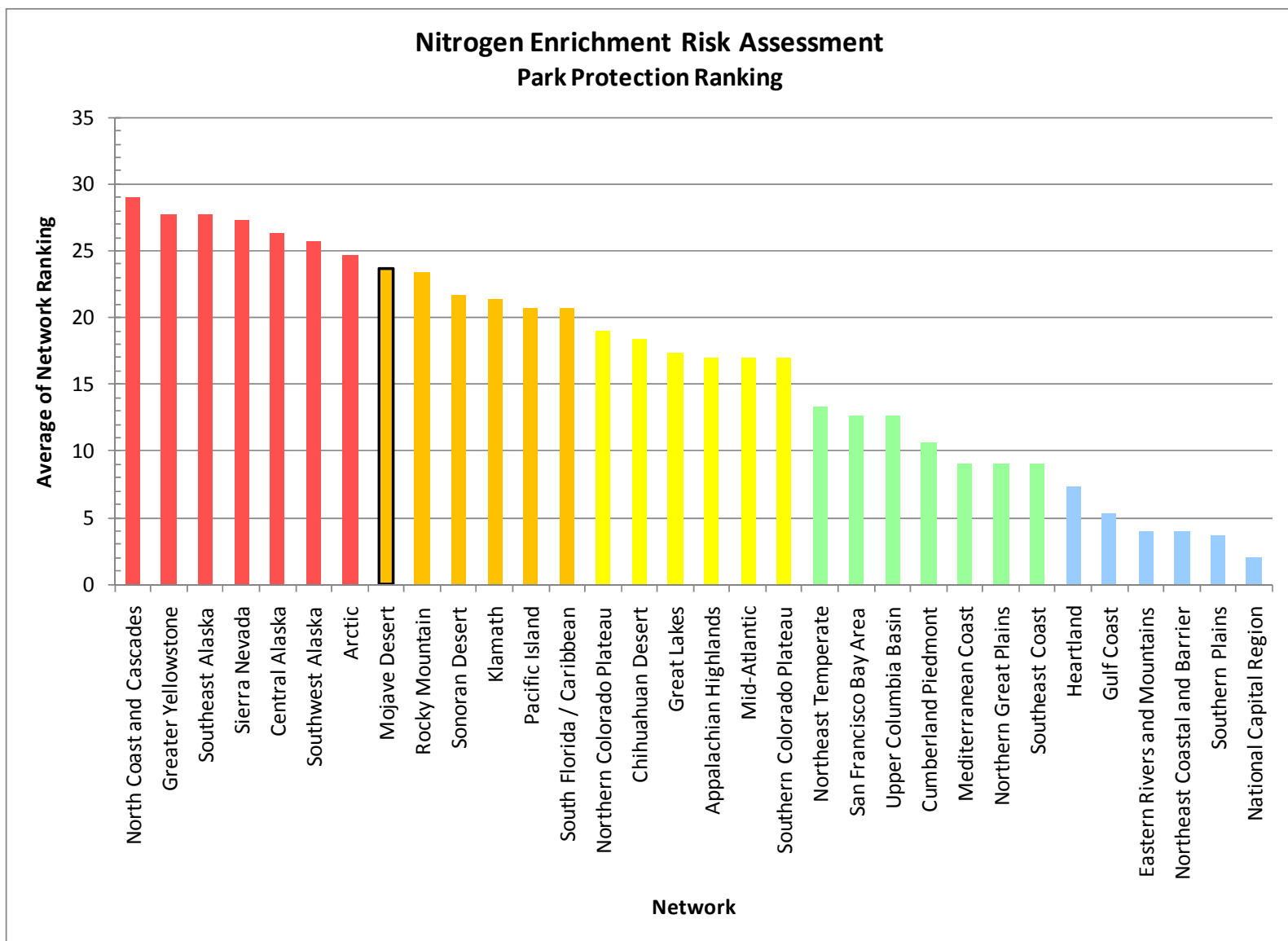


Figure C

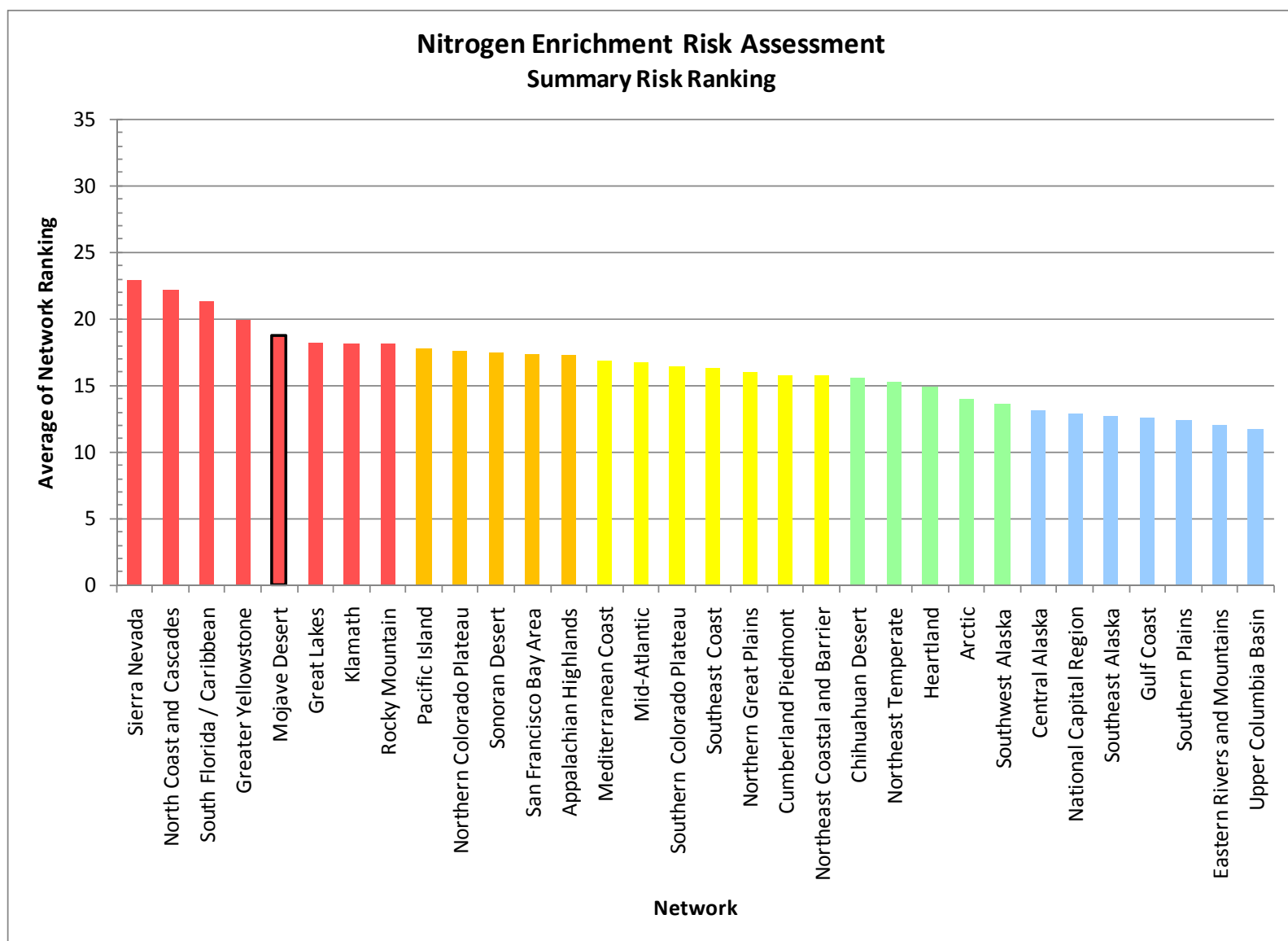


Figure D

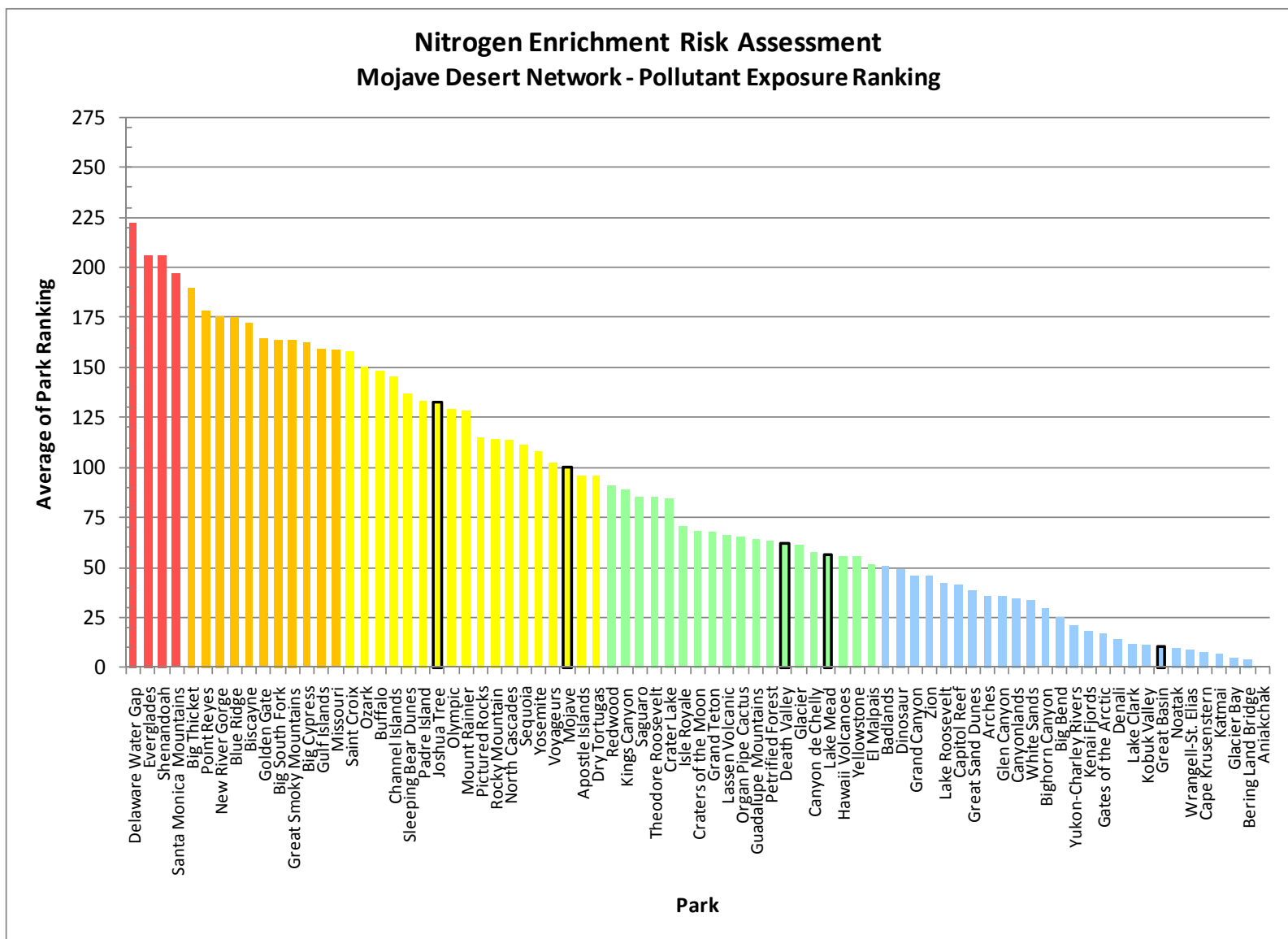


Figure E

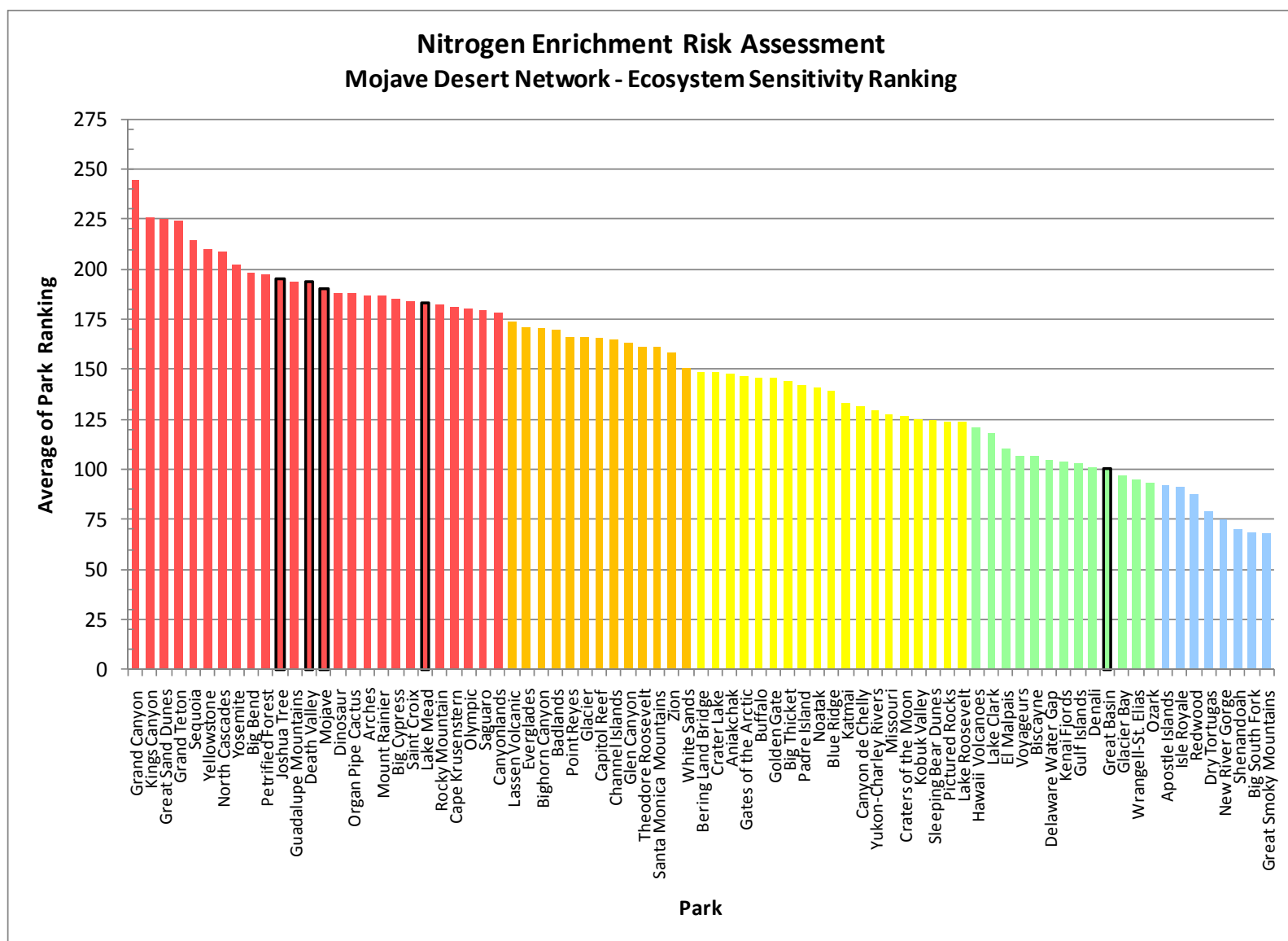


Figure F

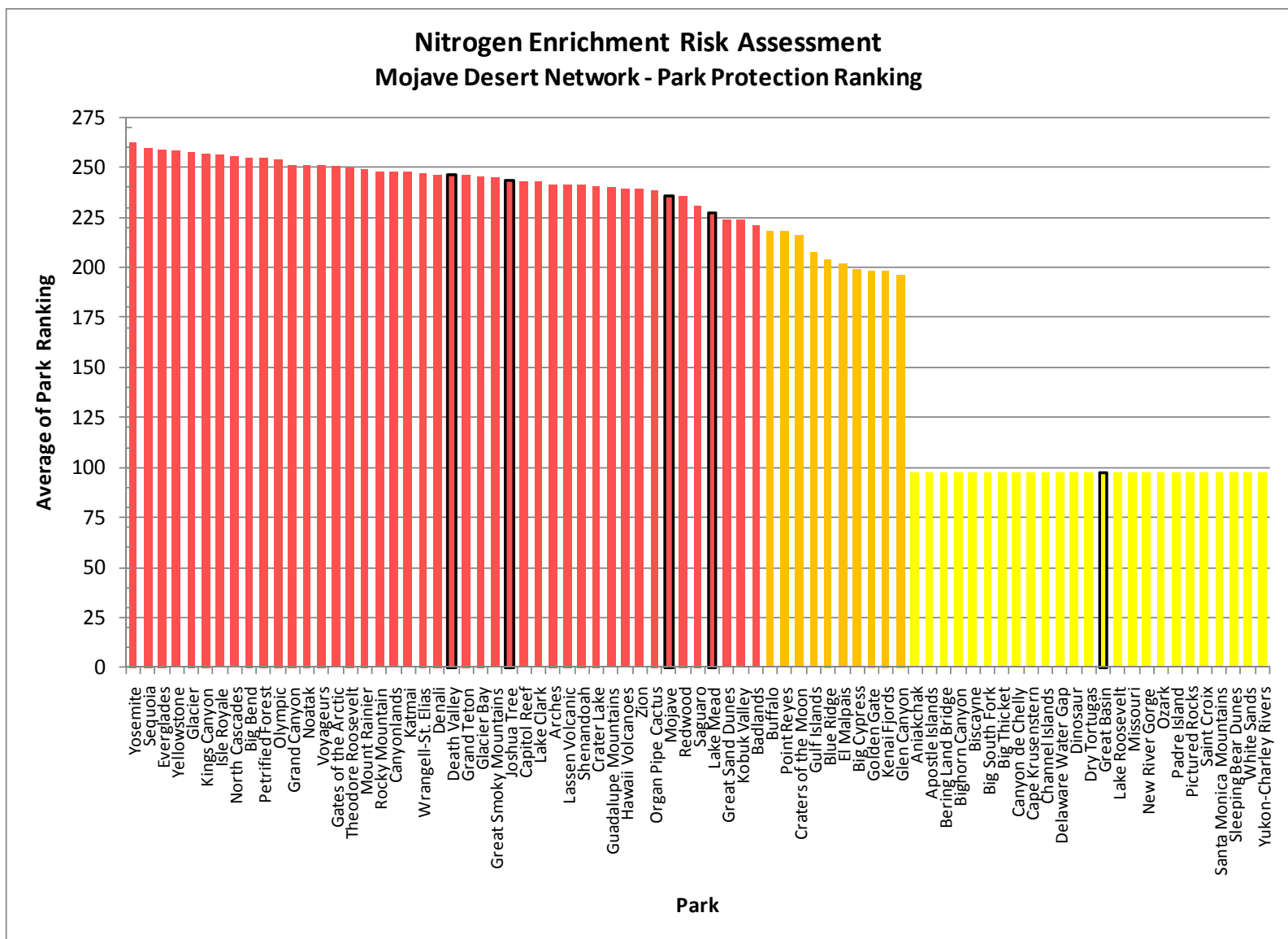


Figure G

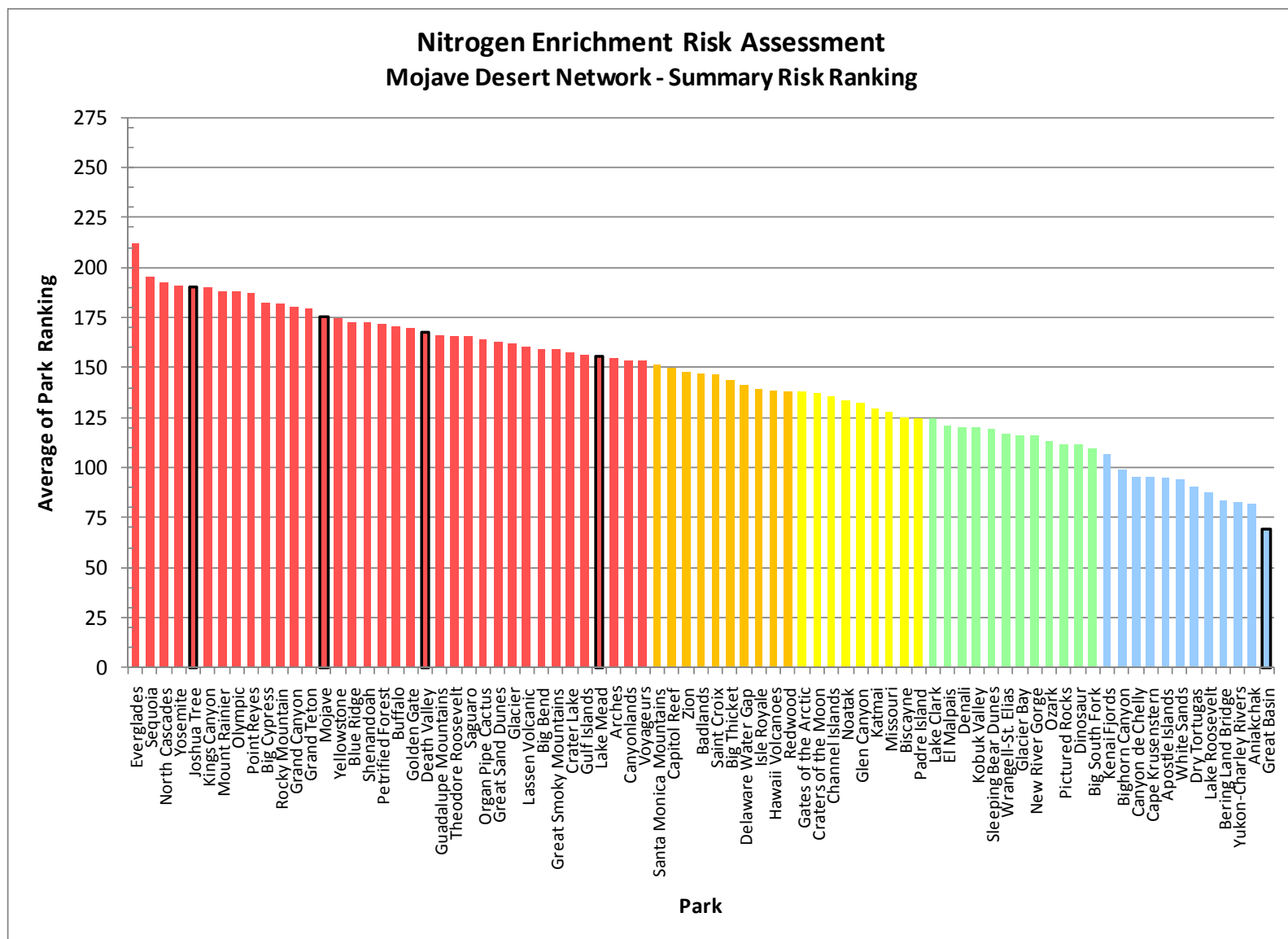


Figure H

The Department of the Interior protects and manages the nation's natural resources and cultural heritage; provides scientific and other information about those resources; and honors its special responsibilities to American Indians, Alaska Natives, and affiliated Island Communities.

NPS 963/106678, February 2011

National Park Service
U.S. Department of the Interior



Natural Resource Program Center

Air Resources Division

PO Box 25287

Denver, CO 80225

www.nature.nps.gov/air