

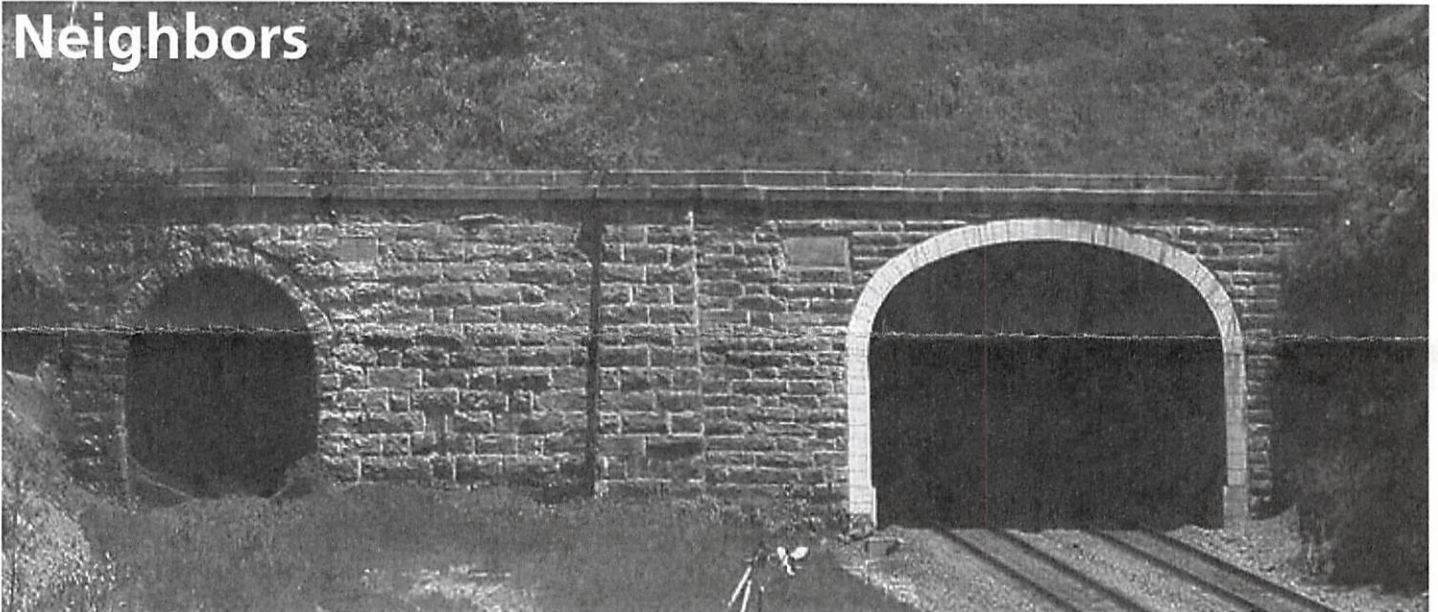
Allegheny Portage Railroad

National Park Service
U.S. Department of the Interior

Allegheny Portage Railroad
National Historic Site



Neighbors



Skew Arch Bridge

1. Exit park by the entrance road on which you entered.
2. Take Route 22 West (Ebensburg direction) two miles to the next exit (Cresson/Summit).
3. At the end of the exit ramp turn left (away from Cresson). This is old US Route 22.
4. There are 2 parking spots near the Skew Arch Bridge. The Bridge is on a traffic island in the middle of old US Route 22. Watch carefully for traffic as you enter and leave the parking area.

Gallitzin Tunnels

1. Exit park by the entrance road on which you entered.
2. Follow road straight and cross over new Route 22; continue for approximately 1 mile. You will pass through the town of Tunnelhill on your way to Gallitzin. Take extra care at the stop sign in Tunnelhill.
3. At Gallitzin, turn left onto Church Street. There is a sign reading "Gallitzin Tunnels" with an arrow indicating this turn. A good landmark is the small convenience store (Carol's Store) that you'll pass on the lefthand side of the road just before you get to Church Street.
4. Continue on Church Street for several blocks, until you see a black Heritage Route sign indicating a left turn.
5. Turn left onto this street. The street name is Jackson Street, although the street sign is usually well hidden.
6. Take the very next left and park along the right side of the street. The tunnels are to your right. A red restored caboose serves as a visitor center to the site, it is staffed by very knowledgeable volunteers. There are no fees. There are additional museum displays in the municipal building opposite the Tunnels Park.

Horseshoe Curve

1. Exit the park by the entrance road on which you entered.
2. Follow road straight and cross over new Route 22. Follow this road 3.7 miles, through the town of Gallitzin, to Forest Park Zoo on right. Zoo is no longer in operation.
3. Turn right onto the road in front of old zoo. A sign reading "Horseshoe Curve National Historic Landmark 3 1/2 mi." will precede this road.
4. Follow road downhill and go through tunnel (13'6"). Horseshoe Curve Visitor Center is to the left. There is a fee for the Visitor Center and 'funicular' ride up to track level. There is no other way to view the Curve other than access through the Visitor Center.

Railroaders Museum

1. Exit the park by the entrance road on which you entered.
2. Take Route 22 East (Hollidaysburg direction) to Interstate 99/Route 220 North.
3. Exit Interstate 99 at the Altoona 17th Street exit. Follow the signs to the Railroaders Museum.
4. Museum will require a left turn onto 9th Avenue off of 17th Street.