



2016

# National Trails Intermountain Region

FY2016 SUPERINTENDENT'S ANNUAL REPORT







# Contents



Acronym List .....	4
Executive Summary of Fiscal Year 2016.....	6
Administration and Staffing.....	8
Organization and Purpose .....	8
Budgets.....	8
Staff Changes .....	9
Core Operations.....	10
Partnerships and Programs.....	10
Butterfield Overland Trail Special Resource Study/Environmental Assessment.....	11
Chisholm Trail and Great Western Trail Feasibility Study/Environmental Assessment .....	11
Four Trails Feasibility Study/Environmental Impact Statement (EIS) .....	12
Old Spanish NHT Comprehensive Administrative Strategy (CAS).....	12
El Camino Real de los Tejas National Historic Trail.....	12
El Camino Real de Tierra Adentro National Historic Trail .....	14
Mormon Pioneer National Historic Trail .....	18
Old Spanish National Historic Trail .....	19
Oregon and California National Historic Trails .....	22
Pony Express National Historic Trail .....	26
Santa Fe National Historic Trail .....	28
Trail of Tears National Historic Trail .....	32
NTIR Trails Project Summary .....	36
Trail Websites.....	38
Volunteers-in-Parks (VIP) Program .....	38
Geographic Information Systems .....	39
Resource Advocacy and Protection .....	40
Route 66 Corridor Preservation Program.....	41







## Acronym List

<b>ADA</b>	Americans with Disabilities Act	<b>CMS</b>	Content Management System
<b>AZRU</b>	Aztec Ruins National Monument	<b>CTTP</b>	Connect Trails to Parks
<b>BLM</b>	Bureau of Land Management	<b>DAR</b>	Daughters of the American Revolution
<b>CALI</b>	California National Historic Trail	<b>DCP</b>	Developmental Concept Plan
<b>CARTA</b>	El Camino Real de Tierra Adentro Trail Association	<b>DIGIT</b>	Digitally Integrated Geographic Information Technologies
<b>CAS</b>	Comprehensive Administrative Strategy	<b>DO</b>	Director's Order (National Park Service)
<b>CCSP</b>	Challenge Cost Share Program	<b>DOT</b>	Department of Transportation
<b>CESU</b>	Cooperative Ecosystem Studies Unit	<b>DSC</b>	Denver Service Center (National Park Service)
		<b>EA</b>	Environmental Assessment
		<b>EIS</b>	Environmental Impact Study
		<b>ELCA</b>	El Camino Real de Tierra Adentro National Historic Trail
		<b>ELCAT</b>	El Camino Real de los Tejas National Historic Trail Association
		<b>ELTE</b>	El Camino Real de los Tejas National Historic Trail
		<b>FHWA</b>	Federal Highways Administration
		<b>FLAP</b>	Federal Lands Access Program
		<b>FONSI</b>	Finding of No Significant Impact
		<b>FOUN</b>	Fort Union National Monument
		<b>FS</b>	Feasibility Study
		<b>FYP</b>	Find Your Park
		<b>GIS</b>	Geographic Information System
		<b>HFC</b>	Harpers Ferry Center
		<b>HSR</b>	Historic Structure Report
		<b>IBWC</b>	International Boundary and Water Commission
		<b>IMR</b>	Intermountain Region (National Park Service)
		<b>INAH</b>	Instituto Nacional de Antropología e Historia

**JUBA** Juan Bautista de Anza National Historic Trail

**KCAHTA** Kansas City Area Historic Trails Association

**MARC** Mid-American Regional Council (of Governments)

**MOPI** Mormon Pioneer National Historic Trail

**MOU** Memorandum of Understanding

**MTSU** Middle Tennessee State University (Center for Historic Preservation)

**NEPA** National Environmental Policy Act

**NHL** National Historic Landmark

**NHT** National Historic Trail

**NPEA** National Pony Express Association

**NPF** National Park Foundation

**NPS** National Park Service

**NTIR** National Trails Intermountain Region

**NTS** National Trails System

**NWR** National Wildlife Refuge

**OCTA** Oregon-California Trails Association

**ODOT** Oregon Department of Transportation

**OLSP** Old Spanish National Historic Trail

**ONPS** Operations of the National Park Service

**OREG** Oregon National Historic Trail

**OSTA** Old Spanish Trail Association

**PECO** Pecos National Historical Park

**PEPC** Planning, Environment, and Public Comment

**PNTS** Partnership for the National Trails System



**POEX** Pony Express National Historic Trail

**ROSI** Route 66 Corridor Preservation Program

**RTCA** Rivers Trails and Conservation Assistance program

**RTP** Recreational Trails Program (Federal Highways Administration)

**SAFE** Santa Fe National Historic Trail

**SCAG** Southern California Association of Governments

**SFTA** Santa Fe Trail Association

**SHPO** State Historic Preservation Office

**THC** Texas Historical Commission

**TOTA** Trail of Tears Association

**TRTE** Trail of Tears National Historic Trail

**TVA** Tennessee Valley Authority

**UNM** University of New Mexico

**USACE** United States Army Corps of Engineers

**USFS** United States Forest Service

**USFWS** United States Fish and Wildlife Service

**VIP** Volunteers-in-Parks

**WASO** Washington Office (National Park Service)



## SECTION ONE



## Executive Summary of Fiscal Year 2016

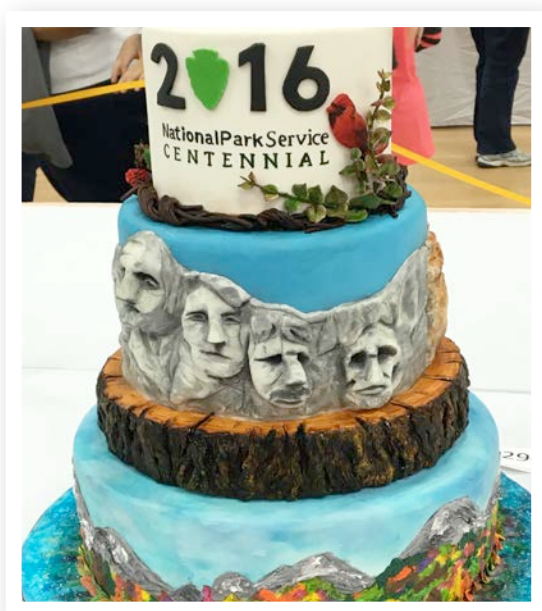
(pp. 6-7) Throughout the agency's centennial year, cakes were an important part of many community events.



The National Trails Intermountain Region (NTIR) accomplishments for October 1, 2015 – September 30, 2016 are as follows:

- Celebrated the NPS centennial by sponsoring, organizing, and participating in events related to all nine of the trails that our office administers or co-administers, including four events along El Camino Real de Tierra Adentro National Historic Trail (ELCA).
- A major centennial-related event included the Powder Mill Bridge Dedication, a new pedestrian bridge over Interstate 435 in Kansas City, MO. The new bridge serves as a key improvement along the 41-mile three-trail recreational trail (following California National Historic Trail [CALI], Oregon National Historic Trail [OREG], and Santa Fe National Historic Trail [SAFE]) between Sugar Creek, MO and Gardner, KS. Fourteen community partners played a role in trail development and in organizing the June 2016 event.

- Assisted with planning and carrying out binational workshop, “Los Dos Caminos: Bridging Borders Across the Centuries,” held in Laredo, TX, which brought together about 40 invited participants representing Mexico and the United States to share ideas, experiences, and develop work plans for the preservation, development, and interpretation of El Camino Real de los Tejas National Historic Trail (ELTE) and El Camino Real de Tierra Adentro National Historic Trail (ELCA).
- Completed a major series of interpretive and cultural resource reports on La Bajada, a significant historical site near Santa Fe, NM (ELCA). The reports included an interpretive plan, a metal detection survey, a roadbed condition assessment, and a cultural landscape report.
- Completed three Connect Trails to Parks projects and 16 base-funded projects across nine national historic trails.
- Worked with students and faculty at Oglala Lakota College (in Kyle, SD) and with Humboldt State University to produce a 22-minute film on the impact of CALI, Mormon Pioneer National Historic Trail (MOPI), and OREG trails on the Oglala Lakota and other plains tribes.
- Planned and facilitated a four-day community charrette at the Pappans Ferry site (over the Kansas River) in downtown Topeka, KS, located along the California and Oregon National Historic Trails. Also held a charrette in Jonesboro, IL to plan two Trail of Tears National Historic Trail (TRTE) routes in the Hamburg Hill area, just east of the Mississippi River.
- Held two TRTE workshops: a preservation workshop (with partner Middle Tennessee State University) in Dalton, GA, and an itinerary planning workshop in Webbers Falls, OK.
- Finalized a Trail of Tears historic building survey and condition assessment, with Middle Tennessee State University, resulting in more than 230 buildings being recorded.
- Established 18 new certification partnerships, including 14 new ELTE properties in addition to CALI, SAFE, and TRTE properties. There are now 223 certification partnerships with nonfederal entities along eight national historic trails.
- Completed 10 new wayside exhibits, at five locations, and initiated work on 22 others, at six locations, across nine national historic trails.



## SECTION TWO



## Administration and Staffing

The National Trails Intermountain Region administered nine national historic trails, a historic corridor preservation program, and continued three ongoing trail feasibility studies, and one comprehensive administrative strategy.

### ORGANIZATION AND PURPOSE

The NTIR staff in Santa Fe, with branch offices in Salt Lake City, UT, and Albuquerque, NM, administers the following national historic trails: California, El Camino Real de Tierra Adentro, El Camino Real de los Tejas, Mormon Pioneer, Old Spanish (OLSP), Oregon, Pony Express (POEX), Santa Fe, and Trail of Tears. In

addition, the Santa Fe staff administers the Route 66 Corridor Preservation Program (ROSI). El Camino Real de Tierra Adentro and Old Spanish National Historic Trails are co-administered with the Bureau of Land Management (BLM).

### BUDGETS

In fiscal year (FY) 2016, The National Trails Intermountain Region received \$3,541,200 in Operations of the National Park Service (ONPS) funding. In addition, the NTIR team received \$108,600 for planning and \$269,800 for Connect Trails to Parks projects. See table 1 for details on funding by trail.



**TABLE 1. NTIR Funding for FY16.**

<b>Funding Source</b>	<b>Trail or Program</b>	<b>Received</b>
<b>ONPS</b>	Santa Fe National Historic Trail	\$702,300
	Trail of Tears National Historic Trail	\$485,100
	Oregon National Historic Trail	\$426,700
	California National Historic Trail	\$343,500
	Route 66 Corridor Preservation Program	\$286,100
	El Camino Real de Tierra Adentro National Historic Trail	\$284,100
	Pony Express National Historic Trail	\$248,500
	Mormon Pioneer National Historic Trail	\$241,600
	Old Spanish National Historic Trail	\$240,600
	El Camino Real de los Tejas National Historic Trail	\$196,000
	Masau Trail	\$33,700
	Additional NPS Funding from Other Sources	\$53,000
	<b>Total ONPS Funding</b>	<b>\$3,541,200</b>
<b>Planning</b>	Chisholm and Great Western National Historic Trails Feasibility Study (FS)/ Environmental Assessment (EA)	\$5,000
	Four Trails (OREG, CALI, MOPI, and POEX) Feasibility Study Amendment/ Environmental Assessment	\$60,000
	Butterfield Overland Trail Special Resource Study/Environmental Assessment	\$29,000
	OLSP Comprehensive Administrative Strategy (CAS)	\$14,600
	<b>Total Planning</b>	<b>\$108,600</b>
<b>Connect Trails to Parks (CTTP)</b>	El Camino Real de Tierra Adentro National Historic Trail, Buckman Road Retracement	\$99,700
	Trail of Tears National Historic Trail, Blythe Ferry Retracement	\$99,500
	Santa Fe National Historic Trail, Cimarron National Grassland Interpretation	\$70,600
<b>Total CTTP</b>	<b>\$269,800</b>	
<b>Total</b>	<b>\$3,919,600</b>	

## STAFF CHANGES

**Carol Ortega**, Agreements Specialist, departed the staff on February 20, 2016

**Patricia Trujillo**, Administrative Assistant, started on May 1, 2016

**Sarah Rivera**, Cartography Student Trainee, started on August 7, 2016

**Kimberly Finch**, Interpretive Specialist, departed the staff on February 6, 2016

**Bryan Petryl**, Interpretive Specialist, started on May 15, 2016

**Derek Nelson**, Cartographer, converted from a term to permanent position on January 13, 2016 and moved from the Salt Lake City office to the Santa Fe office on May 29, 2016

## SECTION THREE



### Core Operations

#### PARTNERSHIPS AND PROGRAMS

Except for the Mormon Pioneer National Historic Trail, each national historic trail has a primary partner organization that supports trail-related research, interpretation, and development, as well as promoting public interest and heritage tourism. The NTIR team provides financial assistance to some of these organizations from its base ONPS funding. Table 2 identifies the financial assistance that the NTIR team provided to trail organizations in FY16.

The remains of an old stage coach stop near the abandoned town of Stanwix Arizona along the Butterfield trail in the mid to late 1800's.



Rusty horseshoe with nail



**TABLE 2. NTIR Organizational Support for FY16**

<b>Partner Organization</b>	<b>Funding Provided</b>
Trail of Tears Association (for Trail of Tears National Historic Trail)	\$149,135
Santa Fe Trail Association (for Santa Fe National Historic Trail)	\$141,327
Oregon-California Trails Association (for California and Oregon National Historic Trails)	\$133,470
Old Spanish Trail Association (for Old Spanish National Historic Trail)	\$82,500
El Camino Real de los Tejas National Historic Trail Association (for El Camino Real de los Tejas National Historic Trail)	\$75,050
National Pony Express Association (for Pony Express National Historic Trail)	\$65,350
<b>Total</b>	<b>\$646,832</b>

## TRAIL STUDIES AND PLANNING

*The NTIR team is conducting three feasibility studies per the Omnibus Public Lands Management Act of 2009 requirements, and one comprehensive administrative strategy, which is an outgrowth of a comprehensive management plan.*

### Butterfield Overland Trail Special Resource Study/Environmental Assessment

**KEY ACHIEVEMENTS:**

- Completed and placed on the Planning, Environment, and Public Comment (PEPC) for internal review
- Prepared the study as a categorical exclusion (CE) under the National Environmental Policy Act (NEPA) as recommended by the NPS Washington Office (WASO) and the Intermountain Region (IMR) instead of an environmental assessment
- Started removing the EA analysis, finalizing the study as a categorical exclusion, and preparing the associated documentation

- Started working with volunteer historian Gerald Ahnert on research into the history and exact location of the California Butterfield stations

### Chisholm Trail and Great Western Trail Feasibility Study/Environmental Assessment

**KEY ACHIEVEMENTS:**

- Finalized the Finding of No Significant Impact (FONSI) and had it signed by the Regional Director, Sue Masica, on September 13, 2016
- Prepared transmittal documents
- Sent all documents to the NPS Washington Office for review and transmittal to Congress
- Started compiling decision file preparatory for closing out project

## Four Trails Feasibility Study/Environmental Impact Statement (EIS)

### KEY ACHIEVEMENTS:

- Favorably completed the DO-45 review
- Approved the National Historic Landmark (NHL) Landmarks Committee and NPS Advisory Board significance statement
- Completed draft sections of document and maps
- Assembled internal review draft
- Advertised for and awarded editing contract (editing underway)
- Received advice from NPS Washington Office and Intermountain Region to prepare this study, like the Butterfield study, as a categorical exclusion

## Old Spanish NHT Comprehensive Administrative Strategy (CAS)

### KEY ACHIEVEMENTS:

- Advertised for and awarded editing contract
- Completed editing and prepared a final version of the document
- Released the document for public review on July 29, 2016 and placed on Planning, Environment, and Public Comment
- Extended the review date twice before October 17, 2016

Los Dos Caminos workshop, held in Laredo, Texas in June 2016, brought together leaders from both Mexico and the United States, and from both government and partnership representatives, to jointly plan for administration of two important historical trails.

## EL CAMINO REAL DE LOS TEJAS NATIONAL HISTORIC TRAIL

*During the Spanish Colonial era, El Camino Real de los Tejas National Historic Trail was a “royal road” that provided an overland route from Mexico and across the Río Grande to Los Adaes in what now is western Louisiana. Comprehensive management planning for administration of the trail, authorized in 2004, has been completed.*

**KEY PARTNERS/COOPERATORS:** El Camino Real de Tierra Adentro Trail Association (CARTA), El Camino Real de los Tejas National Historic Trail Association (ELCAT), Instituto Nacional de Antropología e Historia (INAH), Texas Historical Commission (THC), Texas Parks & Wildlife, GTI Environmental, LLC., City of San Antonio, Webb County Heritage Foundation, Border Heritage Museum, and River Pierce Foundation.

### KEY ACHIEVEMENTS:

- Worked with trail partners to plan an NPS centennial event: *Celebrating the Centennial at McKinney Falls State Park*, Austin, TX, for November 5, 2016. Partners included Texas Parks & Wildlife, El Camino Real de los Tejas National Historic Trail Association, and Texas Historical Commission.







At Los Dos Caminos workshop, delegates broke up into small groups and discussed a variety of administrative options for both El Camino Real de Tierra Adentro and El Camino Real de los Tejas.

- Assisted with planning and carrying out of binational workshop, “Los Dos Caminos: Bridging Borders Across the Centuries,” held on June 22-24, 2016, in Laredo, TX as follows:
  - » Completed a workshop that brought together about 40 invited binational participants representing Mexico and the United States from various governmental agencies, educational institutions, and non-profit organizations to share ideas, experiences, and develop work plans for the preservation, development and interpretation of El Camino Real de los Tejas National Historic Trail and El Camino Real de Tierra Adentro National Historic Trail
  - » Included NTIR teams (History, Cultural Resources, Interpretation, Design & Development, and Resource Information Management) that organized panels and presented at the workshop

- » Developed a work plan for future collaboration on common goals between the United States and Mexico
- » Completed a draft bilingual report currently undergoing final review before printing
- » Provided funding through task agreements with El Camino Real de Tierra Adentro Trail Association and El Camino Real de los Tejas National Historic Trail Association
- » Included partners such as the El Camino Real de Tierra Adentro Trail Association, El Camino Real de los Tejas National Historic Trail Association, Instituto Nacional de Antropología e Historia, Bureau of Land Management, Texas Historical Commission, and other trail partners and advocates
- Provided historical research and review to the Interpretation team on two artwork projects, featuring Spanish colonial caravans and *parajes* (resting stops) along the trail. Funding provided by National Trails Intermountain Region.
- Completed developmental concept plan (DCP) document for Lobanillo Swales site design, which was provided to El Camino Real de los Tejas National Historic Trail Association for their use.
- Completed a literature search of historic buildings and structures associated with the trail in Texas. Funding provided by National Trails Intermountain Region through a contract with GTI Environmental.

## EL CAMINO REAL DE TIERRA ADENTRO NATIONAL HISTORIC TRAIL

*The El Camino Real de Tierra Adentro National Historic Trail is one of the oldest roads in the United States and was authorized as a national historic trail in 2000. It is a timeless route of trade and cultural exchange and interaction among Spaniards and other Europeans, American Indians, Mexicans, and Americans. This internationally significant trail is co-administered by the Bureau of Land Management and the National Park Service.*

**KEY PARTNERS/COOPERATORS:** El Camino Real de Tierra Adentro Trail Association, El Camino Real de los Tejas National Historic Trail Association, Instituto Nacional de Antropología e Historia, Santa Fe Trail Association (SFTA), Old Spanish Trail Association (OSTA), Bureau of Land Management, United States Forest Service (USFS), University of New Mexico (UNM), School of Architecture and Planning's Historic Preservation and Regionalism Program at UNM, Federal Lands Access Program (FLAP), Federal Highways Administration (FHWA) Central Federal Lands, Gutiérrez-Hubbell House, Bernalillo County Open Space and Cultural Services, City of Albuquerque, Albuquerque Public Schools, Longfellow Elementary School, Citizens Information Committee of Martineztown, New Mexico State Historic Preservation Office (SHPO), Santa Fe County, City of Santa Fe, Morrow Reardon Wilkinson Miller, Ltd., El Rancho de

las Golondrinas, Texas Historical Commission, City of San Antonio, Webb County Heritage Foundation, Border Heritage Museum, River Pierce Foundation, El Paso Community Foundation, El Paso County Historical Commission, El Paso Metropolitan Planning Organization, El Paso El Camino Real Regional Mobility Authority, El Paso County Heritage Commission, and International Boundary and Water Commission (IBWC).

### KEY ACHIEVEMENTS:

- Worked with trail partners to plan several NPS centennial events along the El Camino Real de Tierra Adentro National Historic Trail:
  - » Included several events such as “Adventure, Danger, and Everyday Life on El Camino Real de Tierra Adentro” (Albuquerque, NM); “Viva Mexico Festival” (Santa Fe, NM); and “A Celebration of the Royal Road through Martineztown” (Albuquerque, NM)
  - » Distributed centennial “Find Your Park (FYP) Discover Your National Trail” materials to trail partners in Albuquerque, Corrales, and Los Lunas, NM
  - » Completed Spanish translations of waysides for Martineztown Park, featured as part of the September 27, 2016 centennial event
  - » Completed planning for Santa Fe’s Buckman Road centennial event scheduled for October 2016





La Bajada roadbed stabilization crew supervised by Cornerstones Community Partnerships in collaboration with the Santa Fe National Forest. La Bajada, New Mexico

- Provided guidance and review for four projects associated with La Bajada, a significant cultural landscape located 17 miles southwest of Santa Fe, NM:
  - » Provided technical assistance and final reviews of La Bajada interpretive plan. Funded by National Trails Intermountain Region and partnered with United States Forest Service
  - » Completed *Cultural Landscape Report Phase II*
  - » Completed a roadbed condition assessment and pilot stabilization project
  - » Completed a metal detection survey



La Bajada (New Mexico) roadbed stabilization. Jake Barrow, Principal Investigator for Cornerstones Community Partnerships (second from left) conferring with USFS representatives and stonemasons.



Baker Morrow, Principal Investigator for the La Bajada Cultural Landscape report, Phase II, conferring with partners at La Bajada Mesa, New Mexico, near Santa Fe.

- Provided technical assistance for Martineztown Park (Albuquerque, NM) site interpretive waysides and site identification signing. Partners included City of Albuquerque and Citizens Information Committee of Martineztown. Project completed in summer 2016.
- Provided technical assistance to Santa Fe County for the Buckman Road project:
  - » Submitted proposed interpretive statement of work for inclusion in request for quotes and supplying of interpretive standards required for design firm
  - » Worked with partners on retracement trail project
  - » Provided funding through the Federal Lands Access Program
  - » Included partners such as Santa Fe County, City of Santa Fe, Bureau of Land Management, U.S. Forest Service, Federal Highways Administration Central Federal Lands
- Assisted with planning and carrying out of binational workshop, “Los Dos Caminos: Bridging Borders Across the Centuries,” held on June 22-24, 2016, in Laredo, TX (see section El Camino Real de los Tejas National Historic Trail for more information on this workshop).
- Completed Spanish translation of Three Trails Children’s Narrative/Musical Program (shared with Old Spanish and Santa Fe National Historic Trails). Original English musical/narrative and translation placed on El Camino Real de Tierra Adentro, Santa Fe, and Old Spanish National Historic Trails websites as well as association websites. Funded through a task agreement and included partners such as the El Camino Real de Tierra Adentro, Santa Fe, and Old Spanish Trail Associations and Dolores Valdez de Pong (composer, playwright, seamstress, prop maker).
- Provided historical research and review to Interpretation team on two artwork projects, featuring Spanish colonial caravans and *parajes* along the trail. Funding provided by National Trails Intermountain Region.
- Provided technical assistance to William Mee and Hilario Romero, longtime residents of Agua Fria, NM, on a historical mapping project.
- Provided several rounds of comments on El Paso County sign plan. Funding provided by El Paso El Camino Real Regional Mobility Authority.



San Miguel Church, Socorro, NM, main façade and south side with sacristy (left).



Historic building survey being conducted in Agua Fria, New Mexico through an agreement with the University of New Mexico Historic Preservation and Regionalism Program. L-R Numair Latif, Cynthia Jacobs, Francisco Uviña (Director)

- Traveled to El Paso, TX to assist partners in developing Oñate Crossing documentation and development project. Partners include El Paso Community Foundation, El Paso County Heritage Commission, International Boundary and Water Commission, and Texas Historical Commission.
- Provided assistance to Bernalillo County planning staff in pursuit of NPS Land and Water Conservation Fund funding for a request for proposal completed by the National Trails Intermountain Region for a county-wide DCP project. Also completed proposals for Connect Trails to Parks funding. Partial funding in the amount of \$60,000 will be provided by the county. Partners include Bernalillo County and UNM School of Architecture and Planning.
- Continued to provide input into the State of New Mexico Rio Grande Trail initiative to ensure coordination with El Camino Real de Tierra Adentro National Historic

Trail and prevent conflict with alignment and/or funding and development between the two trails that share a relatively close corridor alignment.

- Participated in the NM Federal Lands Statewide Collaborative Transportation Plan meeting of federal agencies (joint effort involving Santa Fe and Old Spanish National Historic Trails). As a result, the national historic trails will be included for the first time in FHWA transportation planning for funds that will be allocated to federal land management agencies.
- Prepared National Register nomination for San Miguel Catholic Church in Socorro, NM, resulting in listing on the Register. Partnered with New Mexico SHPO.
- Developed methodology for surveying and conducting condition assessments for historic buildings and structures associated with El Camino Real de Tierra Adentro National Historic Trail in the Albuquerque area. Funding provided by the National Trails Intermountain Region through the Cooperative Ecosystem Studies Unit (CESU) for student internship project with the UNM School of Architecture and Planning Historic Preservation and Regionalism Program.



## MORMON PIONEER NATIONAL HISTORIC TRAIL

*The Mormon Pioneer National Historic Trail commemorates those Church of Jesus Christ of Latter-day Saints who left Illinois in 1846 and continued on to the Great Salt Lake Valley the following year. The Mormon Pioneer National Historic Trail was authorized in 1978 and consists of the original 1846-47 route from Nauvoo, IL to Salt Lake City, UT.*

**KEY PARTNERS/COOPERATORS:** Mormon Trail Association state chapters, Bureau of Land Management, National Historic Trails Interpretive Center, Humboldt State University, Oglala Lakota College, Oglala Lakota Tribe, Wyoming State Historic Preservation Office, Utah State Historic Preservation Office, University of Utah Osher Institute, Utah Interagency Task Force, and Utah Historic Trails Consortium.

### KEY ACHIEVEMENTS:

- Worked with trail partners to plan an NPS centennial event: “Song Lines: Trails that Define a Nation and its People” (Casper, WY). Partners included Bureau of Land Management–National Historic Trails Interpretive Center.
- Participated in multi-year Lakota Filming project (with Oregon, California, and Pony Express National Historic Trails) by contacting potential tribal members for participation in project, sending letter of intent to Oglala Lakota College, providing partners with background materials, and



The grave of Mormon emigrant Charlotte Dansie, near South Pass in Wyoming, is one example of the thousands – mostly in unmarked locations – who perished along the western trails.

providing input and reviews of film script.

Funding provided by National Trails

Intermountain Region through a task

agreement. Partners included Humboldt State University and Oglala Lakota Tribe.

- Drafted and reviewed the Multiple Property Documentation Form through participating State Historic Preservation Offices.

Completed the following Four-Trails (Mormon Pioneer, Oregon, California, and Pony Express National Historic Trails) activities and accomplishments:

- Published trails essay on Chimney Rock in *Overland Journal*
- Received Merrill Mattes Award for Excellence in Writing for article on traditional training and use of oxen on the emigrant trails, published in *Overland Journal* (2015)
- Team-taught course regarding the National Park Service at the University of Utah Osher Institute
- Consulted with the Utah Interagency Task Force
- Consulted with the Utah Historic Trails Consortium



## OLD SPANISH NATIONAL HISTORIC TRAIL

*The Bureau of Land Management and National Park Service jointly administer this historic trade route between Santa Fe, NM and Los Angeles, CA. The Old Spanish National Historic Trail was authorized in 2002.*

**KEY PARTNERS/COOPERATORS:** Old Spanish Trail Association, Santa Fe Trail Association, El Camino Real de Tierra Adentro Trail Association, Bureau of Land Management, United States Forest Service, United States Army Corps of Engineers (USACE), Harpers Ferry Center, National Park Foundation (NPF), Rivers Trails and Conservation Assistance Program (RTCA), Juan Bautista de Anza National Historic Trail (JUBA), Aztec Ruins National Monument (AZRU), Mesa County, and City of Grand Junction.

East of Tecopa, California, evidence of the Old Spanish Trail is unmistakable in the vicinity of Emigrant Pass. Photo, with trail in center, looks west from the pass.

### KEY ACHIEVEMENTS:

- Designed six state-specific Find Your Park Discover Your Trail posters as part of the NPS centennial
- Completed Spanish translation of Three Trails Children's Narrative/Musical Program (shared with El Camino Real de Tierra Adentro and Santa Fe National Historic Trails). Original English musical/narrative and translation placed on ELCA, SAFE and OLSP websites as well as association websites. Funded through a task agreement and partners included El Camino Real de Tierra Adentro, Santa Fe, Old Spanish Trail Associations, and Dolores Valdez de Pong (composer, playwright, seamstress, prop maker).





- Produced four Koosharem Waysides (upright exhibits). Fabrication funded by the Bureau of Land Management. Partnered with Koosharem Band of the Southern Paiute, the Bureau of Land Management, and the Old Spanish Trail Association.
- Provided technical assistance to Aztec Ruins National Monument for Wayside Exhibit Concept Plan for three exhibits (one upright and two low profile). Funding provided through an AZRU contract. Partners included Aztec Ruins National Monument, Harpers Ferry Center, and the BLM Farmington Field Office.
- Applied for and received an NPF Active Trails Grant, which supports health and wellness activities, for events in the Grand Junction, CO, area. Partnered with Old Spanish Trail Association,

In April 2016, NPS and BLM staff, along with partners, traveled over the Old Spanish Trail together. Near Yermo, California, east of Barstow, is located the “fork in the road,” with participants pointing out the trail’s Northern Route (left) and Armijo Route (right).

Mesa County, the Bureau of Land Management, and Interpretive Association of Western Colorado.

- Participated in the OSTA Annual Conference and Back to the Trail celebration event in early August. The Back to the Trail celebration was partially funded by the NPF Active Trails Grant.
- Planned for second NPF Active Trail Grant event—and NPS Centennial event—scheduled for October 15, 2016, featuring walking, biking, and horseback riding.
- Met with stakeholders in Los Angeles County to discuss planning options for the



two national historic trails—Old Spanish and Juan Bautista de Anza—in the greater Los Angeles area:

- » Participants included FHWA Central Federal Lands and staff from Southern California Association of Governments, California Department of Transportation and NPS staff from Rivers Trails and Conservation Assistance Program and Juan Bautista de Anza National Historic Trail.
- » FHWA Central Federal Lands Office agreed to include the national historic trails of Southern California as a part of their *Southern California Federal Collaborative Long Range Transportation Plan*, addressing a “high level” inclusion of the trails as a part of the regional active transportation infrastructure and development of the region.
- » Central Federal Lands Office will fund a combined NHT planning/feasibility project for Old Spanish and Juan Bautista de Anza National Historic Trails within Los Angeles County to look at feasibility of alternative developed/constructed retracement trail following the historic trail routes.
- Participated in fieldwork for Bureau of Land Management-led Emery County UT development strategy project in August 2016.
- Participated in the *National Monument Federal Lands Statewide Collaborative Transportation Plan* meeting of federal

agencies (joint effort involving Santa Fe and El Camino Real de Tierra Adentro National Historic Trails). As a result, the national historic trails will be included for the first time in FHWA transportation planning for funds that will be allocated to federal land management agencies.

- Developed a student internship landscape architecture project with the UNM School of Architecture and Planning Landscape Architecture Program. Interns worked on two draft developmental concept plan, one of which was the result of a partnership with the U.S. Army Corps of Engineers in the Abiquiú area of New Mexico. Funding provided by National Trails Intermountain Region through the Cooperative Ecosystem Studies Unit.
- Participated in a week-long field consultation with the Old Spanish Trail Association.



Woman overlooking a colorful desert landscape near Abiquiú, New Mexico in the American Southwest



An emigrant wagon, pulled by oxen, at Scottsbluff, Nebraska. Oxen, more than any other draft animal, were the engines of the westbound wagon trains during the 1840s, 1850s, and 1860s.

## OREGON AND CALIFORNIA NATIONAL HISTORIC TRAILS

*The Oregon National Historic Trail was authorized in 1978 and the California National Historic Trail was authorized in 1992; both trails followed the same corridor from the Missouri River to southwestern Wyoming, where they split and lead to Oregon and California. They share many of the same organizations, resources, and stories.*

**KEY PARTNERS/COOPERATORS:** The Oregon-California Trails Association and its chapters, Bureau of Land Management, Missouri Department of Transportation, Community Improvement District, Santa Fe Trail Association, 3-Trails Corridor Partnership, 3-Trails West, Inc., Hickman Mills community and school district, 5th and 6th Council Districts of Kansas City Metro Organization, Partnership for the National Trails System (PNTS), Cerner Corporation, Kansas City Area Historical Trails Association,

Historical Society of New Santa Fe, and Southern Communities Coalition, Confederated Tribes of Siletz Indians, Confederated Tribes of the Grande Ronde, Cow Creek Band of Umpqua Tribe of Indians, Hugo Neighborhood Association and Historical Society, Oregon Travel Experience, Oregon State Parks, Oregon Department of Transportation (ODOT), Lander



Oxen demonstration along the Oregon Trail in Kansas. Dixon Ford, an oxen handler from Utah, teamed with Lee Kreutzer from the trails staff to write an award-winning article in OCTA's peer-reviewed *Overland Journal*.

Trail Foundation, Shoshone-Bannock Tribe, ExxonMobil Corporation, City of Topeka (Kansas), Shawnee County (Kansas), Topeka Riverfront Authority, Heartland Visioning, City of Independence (Missouri), Humboldt State University, Oglala Lakota Tribe, Mid-American Regional Council (of Governments) (MARC), National Park Foundation, National Pony Express Association (NPEA), University of Utah Osher Institute, Utah Interagency Task Force, and Utah Historic Trails Consortium.

**KEY ACHIEVEMENTS:**

- Worked with trail partners to plan an NPS centennial event: “Powder Mill Bridge Dedication” (in conjunction with the Santa Fe National Historic Trail), in Kansas City, MO. Partners included fourteen community partners.
- Produced six upright exhibits for Applegate Trail/Manzanita rest area waysides. Fabrication is in progress. Funding provided by National Trails Intermountain Region. Partners included Confederated Tribes of Siletz Indians, Confederated Tribes of the Grande Ronde, Cow Creek Band of Umpqua Tribe of Indians, Hugo Neighborhood Association and Historical Society, Oregon Travel Experience, Oregon State Parks, and Oregon Department of Transportation.
- Provided technical assistance for design and fabrication of two upright exhibits for placement at the Fort Hall Indian Reservation Museum. Uprights have been completed. Dialogued with tribe regarding additional proposed waysides.

Funding provided by the Lander Trail Foundation. Partners included Oregon-California Trails Association, Lander Trail Foundation, Shoshone-Bannock Tribe, and ExxonMobil Corporation.

- Co-planned, presented at, and facilitated a four-day Pappans Ferry community charrette at a trail river crossing site in Topeka, KS, August 22-26, 2016. This charrette was precedent-setting in working within a major urban area and with local high-profile municipal partners. The effort attracted significant television and print news media coverage and included 100 plus participants. Funding provided by National Trails Intermountain Region. Partners included City of Topeka, Shawnee County, Topeka Riverfront Authority, and Heartland Visioning.



Pappan's Ferry, in downtown Topeka, Kansas, was a primary Kansas River crossing point for westbound wagon trains. Trails staff and local residents met for a charrette to plan the development of a city park based on the mid-19th century ferry and the emigrant experience.



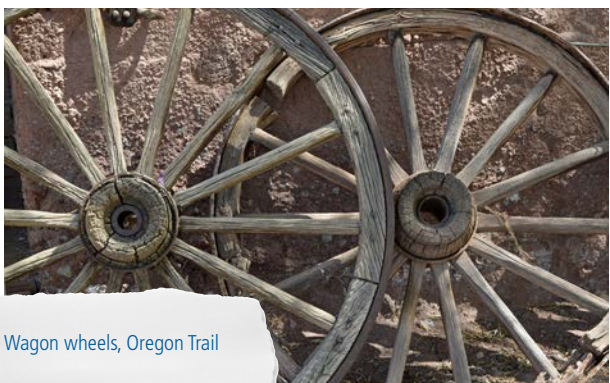


The Barlow Road, built during the mid-1840s, provided a relatively safe route for overland emigrants to reach Oregon's Willamette Valley. This photo was part of field investigation near Government Camp, Oregon.

Oregon Trail ruts near Bonneville Point, east of Boise, Idaho. NPS staff worked with Idaho OCTA members in 2016 to interpret the area's trail resources.

- Provided technical assistance to contractor employed by 3-Trails West, Inc., for the 3-Trails Transit Center (shared with the Santa Fe National Historic Trail). Reviewed draft designs at 30, 60, and 90 percent drafts; provided images, significant text revisions, and suggestions for layout to improve readability and accessibility.
- Participated in PNTS workshop planning calls (shared with the Santa Fe National Historic Trail); attended workshop and presented session on history of NTIR interpretive efforts in greater Kansas City area.
- Produced McCoy Park Waysides (shared with the Santa Fe National Historic Trail) that included four low-profile Americans with Disabilities Act (ADA) exhibits. Received installation photographs; project completed. Funding provided by National Trails Intermountain Region through a purchase request. Partners included the City of Independence, MO.
- Completed Penn Valley & Territorial Road Waysides (shared with the Santa Fe National Historic Trail) that included two low-profile wayside exhibits. Funding provided by National Trails Intermountain Region through a task agreement. Partnered with the Kansas City Area Historical Trails Association.

- Participated in multi-year Lakota Filming project (with Mormon Pioneer and Pony Express National Historic Trails) by contacting potential tribal members for participation in project, sending letter of intent to Oglala Lakota College, providing partners with background materials, and providing input and reviews of film script. Funding provided by National Trails Intermountain Region through a task agreement. Partners included Humboldt State University and Oglala Lakota Tribe.
- Completed site plan for Canyon Creek Station (in the Oregon National Historic Trail) located on BLM land in Idaho. Plan released to partners. Partners include Bureau of Land Management and Oregon-California Trails Association.
- Entered into a cooperative agreement with Mid America Regional Council (MARC) for comprehensive trail plan project for the Kansas City Metro area (OREG/CALI/SAFE). In July 2016, held kickoff meetings with Mid-American Regional Council (of Governments), trail associations, and municipalities.
- Completed Alcove Spring 2015 NPF Active Trails Program (Oregon and California National Historic Trails):
  - » Completed in the fall with second annual Oregon Trail Trek run event
  - » Submitted final reports to National Park Foundation
  - » Planned Centennial event—third annual Oregon Trail Trek scheduled for October 2016
- Provided assistance and training for NPS Denver Service Center (DSC) staff and OCTA/NPEA partners for the California Department of Transportation sign project.
- Completed the following activities and accomplishments related to Four-Trails (Oregon, California, Mormon Pioneer, and Pony Express National Historic Trails):
  - » Published trails essay on Chimney Rock in *Overland Journal*
  - » Received Merrill Mattes Award for Excellence in Writing for article on traditional training and use of oxen on the emigrant trails, published in *Overland Journal* (2015)
  - » Team-taught University of Utah Osher Institute course about the National Park Service
  - » Consulted with Utah Interagency Task Force
  - » Consulted with Utah Historic Trails Consortium
  - » Consulted with Oregon-California Trails Association, including field visits and annual meeting



Wagon wheels, Oregon Trail



This signpost, showing Pony Express mileages, sits astride a recently-developed retracement trail in Eagle Mountain, Utah, about 40 miles southwest of Salt Lake City.

## PONY EXPRESS NATIONAL HISTORIC TRAIL

*The Pony Express rider and his galloping horse have become one of the mythic icons of the American West. Many Pony Express enthusiasts enjoy re-creating the thrill of this cross-country ride by participating in the annual re-ride along the route. The Pony Express National Historic Trail was authorized in 1992.*

**KEY PARTNERS/COOPERATORS:** National Pony Express Association, Oregon-California Trails Association, NPS Denver Service Center, Girl Scouts, Rio Linda High School, Sacramento County, City of Sacramento, California State Parks, Humboldt State University, Oglala Lakota Tribe, Rivers Trails and Conservation Assistance Program, Vanishing Treasures, University of Utah Osher Institute, Utah Interagency Task Force, and Utah Historic Trails Consortium.

### KEY ACHIEVEMENTS:

- Worked with trail partners to plan an NPS centennial event: “Annual Pony Express Re-ride” (Sacramento, CA). Partners included: National Pony Express Association, Girl

Scouts, Rio Linda High School, Sacramento County, City of Sacramento, and California State Parks.

- Completed field investigations into the location of POEX stations, based on trips to Utah and Nevada (late May, with volunteer Alice Norris), Wyoming and Nebraska (mid-September), and California (late September, with volunteer Frank Matulich). As a result of investigations in the 2015 and 2016 field seasons, NTIR staff have visited all but eight of the 176 Pony Express station sites.
- Worked with local partners and Rivers Trails and Conservation Assistance Program to pursue completion of a development concept plan for the Kingsbury Grade from Stateline at Lake Tahoe to Genoa, NV.
- Provided assistance and training for DSC staff and OCTA/NPEA partners for the California Department of Transportation sign project (shared with California National Historic Trail).
- Facilitated condition assessment of original Pony Express station in Kansas, with Vanishing Treasures program.





The Marysville (Kansas) Pony Express barn. One of only a smattering of Pony Express barns or stables still standing, NPS staff visited the site to survey needed structural repairs.



The Edwards Creek Pony Express Station, in central Nevada, operated for just 18 months during 1860 and 1861.



The B.F. Hastings Building, in Old Sacramento (California), was a Pony Express station and the subject of an inventory of stations along the route.



In May 2016, an NPS volunteer recorded a Pony Express station monument, erected in 1940 at Dugway by the Daughters of Utah Pioneers



NPS staff and volunteers, in May 2016 inventory a Pony Express station site – noted by the stainless-steel pole – in western Utah.



One of the few remaining historic Pony Express stations is at Willow Springs (left), in western Utah. Trails staff inventoried the site in May 2016.





San Miguel del Vado, halfway between Santa Fe and Las Vegas, was located along the Santa Fe Trail. The town boasts historic buildings dating to the trail period, and nearby are several visible trail ruts.

## SANTA FE NATIONAL HISTORIC TRAIL

*Between 1821 and 1880, the Santa Fe Trail was primarily a commercial highway linking Missouri and Santa Fe, NM. Today, this well-known trail attracts many visitors and partners and enjoys the support of an active trail association. The Santa Fe National Historic Trail was authorized in 1987.*

**KEY PARTNERS/COOPERATORS:** Santa Fe Trail Association and its chapters, Oregon-California Trails Association, El Camino Real de Tierra Adentro Trail Association, Old Spanish Trail Association, City of Las Vegas, Pecos National Historical Park (PECO), Fort

The plaza in Las Vegas, New Mexico's "old town," which served as an important waypoint along the Santa Fe National Historic Trail.

Union National Monument (FOUN), Museum of Spanish Colonial Arts, Museum of Indian Arts & Culture, Wheelwright Museum of the American Indian, Museum of International Folk Art, Santa Fe Botanical Garden, Missouri Department of Transportation, Community Improvement District, 3-Trails Corridor Partnership, Hickman Mills community and school district, 5th and 6th Council Districts of Kansas City Metro Organization, Partnership for the National Trails System (PNTS), Cerner Corporation, Kansas City Area Historical Trails Association, Historical Society of New Santa Fe, Southern Communities Coalition, USFS Design & Interpretation Center, Cimarron National Grasslands, United States Forest Service, Connect Trails to Parks, Jackson

County Park and Recreation (Independence, Missouri), 3-Trails West, Inc., City of Independence, Missouri, Dolores Valdez de Pong, UNM Geography Department, UNM School of Architecture and Planning Landscape Architecture Program, UNM History Department's Career Diversity Fellowship Initiative, Fort Larned National Historic Site, Museum Hill Partnership (Santa Fe, NM), Mid-American Regional Council (of Governments), Federal Highways Administration, US Army Corps of Engineers, Boy Scouts of America, National Trust for Historic Preservation, Kansas State Historic Preservation Office.

**KEY ACHIEVEMENTS:**

- Worked with trail partners to plan several NPS centennial events along the Santa Fe National Historic Trail:
  - » *Las Vegas Heritage Week* – Family Day, Las Vegas, NV. Partners included City of Las Vegas, Pecos National Historical Park, and Fort Union National Monument.
  - » *Santa Fe Community Days*, Santa Fe, NM. Led four tours of SAFE swales. Partners included four museums and botanic garden.
  - » *Powder Mill Bridge Dedication (in conjunction with the Oregon and California National Historic Trails)*, Kansas City, MO. Partners included fourteen community partners.

- Negotiated with USFS Design & Interpretation Center and Cimarron National Grasslands to establish agreement to complete interpretive wayside designs; provided technical assistance for five low-profile and two upright waysides. Fabrication in progress. Funding provided by the United States Forest Service and CTTTP-funded interagency agreement.
- Reviewed Junior Wagon Master program with SFTA representatives and developed plan for future work.
- Delivered three upright Salem Park exhibits. Funding provided through a task agreement. Partners included Santa Fe Trail Association and Jackson County Park and Recreation, Independence, MO.
- Worked on the Santa Fe Trail Mobile App:
  - » Completed significant revisions and troubleshooting of mobile app
  - » Trained staff at NPS sites along the tour to upgrade relevant pages
  - » Advertised tour via rack cards and site signs
- Assisted the 3-Trails Transit Center (shared with Oregon and California National Historic Trails):
  - » Provided technical assistance to contractor employed by 3-Trails West, Inc.
  - » Reviewed draft designs at 30, 60, and 90 percent drafts
  - » Provided images, significant text revisions, and suggestions for layout to improve readability and accessibility



- Assisted the Partnership for the National Trails System (shared with Oregon and California National Historic Trails):
  - » Participated in PNTS workshop planning calls
  - » Attended workshop and presented session on history of NTIR interpretive efforts in greater Kansas City area
- Completed and received installation photographs of four low-profile ADA McCoy Park wayside exhibits (shared with Oregon and California National Historic Trails). Funding provided by National Trails Intermountain Region through a purchase request. Partners included the City of Independence, MO.
- Completed two low-profile Penn Valley & Territorial Road wayside exhibits (shared with Oregon and California National Historic Trails). Funding provided through a task agreement. Partners included the Kansas City Area Historical Trails Association.
- Completed Spanish translation of 3-Trails Children's Musical/Narrative (shared with Old Spanish and El Camino Real de Tierra Adentro National Historic Trails). Original English musical/narrative and translation placed on ELCA, SAFE, and OLSP websites as well as association websites. Funded through a task agreement. Partners included El Camino Real de Tierra Adentro, Santa Fe, and Old Spanish Trail Associations, and Dolores Valdez de Pong (composer, playwright, seamstress, prop maker).
- Through the memorandum of understanding (MOU) with UNM, worked with an UNM Geography student (and NPS intern) Kashia Allen on a new interactive map, entitled *Populated Places on the Santa Fe Trail*. Map project featured as part of a colloquium to the UNM Geography Department on the *Geographical History of the Santa Fe Trail*. Funding provided by National Trails Intermountain Region through a CESU agreement. Partners included the University of New Mexico.
- Worked with UNM History Ph.D. student Guy McClellan on a SAFE place names mapping project funded by UNM History Department's Career Diversity Fellowship initiative.
- Submitted a successful CTPP project proposal on a bilingual tour guide to sites in the Fort Larned, KS area. Funding by Connect Trails to Parks for FY17. Partners include Fort Larned National Historic Site.
- Revised draft DCP document and provided to Museum Hill Partnership (Santa Fe, NM) for use in the funded architectural and engineering contract to develop a master plan for Museum Hill that will incorporate the Santa Fe National Historic Trail.
- Entered into cooperative agreement with the Mid-American Regional Council (of Governments) for comprehensive trail plan project for the Kansas City Metro area (shared with Oregon and California National Historic Trails).



Fort Union National Monument

Held kickoff meetings with the Mid-American Regional Council, trail associations, and municipalities in July 2016.

- Participated in the *New Mexico Federal Lands Statewide Collaborative Transportation Plan* meeting of federal agencies (shared with El Camino Real de Tierra Adentro and Old Spanish National Historic Trails). Participation has resulted in the national historic trails being included for the first time in FHWA transportation planning for funds that will be allocated to federal land management agencies.
- Produced and shipped a backlog of site certification certificates for Santa Fe National Historic Trail (61) to partners with assistance from interns and volunteers.
- Developed a student internship landscape architecture project with UNM School of Architecture and Planning Landscape Architecture Program. Interns worked on two draft developmental concept plans, one

of which was a retracement trail between Burlingame to Council Grove, KS, which was the result of a partnership with Santa Fe Trail Association, the local community, and the Boy Scouts of America. Funding provided by National Trails Intermountain Region through a CESU agreement.

- Consulted with Santa Fe Trail Association, including the annual meeting.
- Listed two SAFE segments (Timpas Vicinity and Bloom Vicinity) on the National Register of Historic Places. Partners included the National Trust for Historic Preservation.
- With volunteers, compiled research on over 230 historic buildings and structures associated with the Santa Fe National Historic Trail in New Mexico.
- Developed methodology and startup for SAFE historic building survey and condition assessments in Kansas. Partners included Kansas State Historic Preservation Office.





## TRAIL OF TEARS NATIONAL HISTORIC TRAIL

*In 1838, the United States Government forcibly removed more than 16,000 Cherokee Indian people from their homelands in Tennessee, Alabama, North Carolina, and Georgia, and resettled them in Indian Territory (now Oklahoma). The Trail of Tears National Historic Trail recognizes the removal of the Cherokee and the paths that 17 Cherokee detachments followed westward. Today, the trail encompasses over 5,000 miles of land and water routes, and traverses portions of nine states. The Trail of Tears National Historic Trail was authorized in 1987.*

**KEY PARTNERS/COOPERATORS:** Trail of Tears Association (TOTA) and its chapters, Cherokee Nation, Eastern Band of Cherokee Indians, Chickasaw Tribe, City of Waynesville, National Park Foundation, Pulaski County Tourism, United States Forest Service, Shawnee National Forest, Harrisburg, Illinois, Tennessee Department of Transportation, Harpers Ferry Center, Decatur/Rhodes Ferry Park, Fort Smith National Historic Site (FOSM), US Army Corps of Engineers, Western Carolina University, and Middle Tennessee State University.



Portions of the Unicoi Turnpike, a key element of the Trail of Tears National Historic Trail, were damaged by U.S. Forest Service crews. Staff inspected damage to the trail before mitigation measures were implemented.



**KEY ACHIEVEMENTS:**

- Worked with trail partners to plan an NPS centennial event: “Remembering the Cherokee” (Waynesville, MO). Partners included the Trail of Tears Association, Cherokee Nation, City of Waynesville, National Park Foundation, Missouri Chapter Trail of Tears Association, and Pulaski County Tourism.
- Assisted Hamburg Hill and Union County, IL as follows:
- Wrote and designed two exhibits in progress, one low profile and one upright, which are under review by USFS Indian partners. Funding provided through an interagency Agreement between federal agencies. Partners included USFS Shawnee National Forest, Harrisburg, IL, and Trail of Tears Association.
- Planned and conducted four-day design and interpretation charrette for local community members.
- Completed review of two Nashville Bridge Abutment low-profile waysides. Funding and partnership provided by Tennessee Department of Transportation.
- Reviewed New Echota low-profile waysides.
- Reviewed and provided feedback on Atlanta Airport Centennial display, a Harpers Ferry Center centennial project.
- Provided assistance to Decatur/Rhodes Ferry Park in development of request for proposals and review of contractor developed waysides. Funding provided through a task agreement.



One of the better-known structures identified during MTSU’s Trail of Tears building inventory was the Andrew Ross House, on the outskirts of Fort Payne, Alabama.



MTSU researchers visited the little-known John P. Hickman House, a “dogtrot” style building in Lauderdale County, Alabama.



In Livingston County, Kentucky stands the White Inn, a fairly obscure historic building thematically related to the Trail of Tears.



- Organized and facilitated a local itinerary development workshop to create a plan for communicating about Trail of Tears National Historic Trail in the broader Webbers Falls area. Participants included Trail of Tears Association members, FOSM staff, and US Army Corps of Engineers staff. Funding provided by National Trails Intermountain Region. Partner included Trail of Tears Association.
- Developed three low-profile Webbers Falls wayside exhibits as a result of itinerary planning workshop; fabrication in progress. Funding provided through a cooperative agreement. Partner included Trail of Tears Association.
- Completed North Carolina brochure. Funding provided by Blue Ridge National Heritage Area Partnership grant. Partners included Western Carolina University, Eastern Band of Cherokee Indians, and Cherokee Nation.
- Planned and coordinated the May 2016 Trail of Tears preservation workshop, held in Dalton, GA, with emphasis on archeological investigations and Traditional Cultural Properties.
- Partners included TOTA members and Middle Tennessee State University.
- Finalized historical and archeological proposals at Charleston, TN, with Dr. Brett Riggs. Project will be completed in FY17.
- Partnered with United States Forest Service and Trail of Tears Association Illinois on a weeklong Hamburg Hill charrette for two routes of Trail of Tears National Historic Trail between Jonesboro, IL, and the Mississippi River. The developmental concept plan document begun.
- Finalized Tuscumbia to Decatur DCP charrette document; document was released to partners.
- Developed Decatur cooperative agreement for TRTE downtown interpretive trail; working with the city to complete this downtown trail.
- Completed draft Charleston/Fort Cass Developmental Concept Plan and charrette document. Provided input and assistance with local partners on \$250,000 funded Recreational Trails Program (RTP) project for implementation of the first phase of the charrette developmental concept plan.
- Completed reconnaissance of and continued consultation on damage to Unicoi Turnpike caused by unauthorized trenching across the historic Trail of Tears roadbed.





Cultural Resource Workshop at Rockdale Plantation, Georgia, held in May 2016.

- In response to a National Park Foundation grant, supported the Cherokee Nation with its Remember the Removal Ride.
- Organized and conducted two-day cultural resource workshop for Trail of Tears Association in cooperation with Middle Tennessee State University. Finalized Trail of Tears historic building survey/condition assessment, with Middle Tennessee State University, across eight states, resulting in over 230 buildings recorded.
- Developed two-year remote sensing and archival project, with Western Carolina University, of historic Cherokee encampments at old Fort Cass in Tennessee.
- Finalized historic structures report, with Middle Tennessee State University, for two properties associated with Trail of Tears.
- Produced a masonry preservation booklet for owners and advocates of historic masonry properties.



SECTION FOUR



# NTIR Trails Project Summary

Tables 3 and 4 list the ONPS base-funded projects for FY16.

**TABLE 3.** New ONPS Base-funded Projects FY16

Trail	Partner	Project Description	Funding
CALI	Oregon DOT	Applegate Trail; six upright exhibits	\$6,500
CALI/OREG/ SAFE	Mid-America Regional Council of Governments	Kansas City Metro Retracement Trail Planning Project	67,445
Four Trails	Strategic Communications, Inc.	Four Trails Feasibility Study – Editing	18,694
ELCA	BLM, USFS, Santa Fe County, FHWA	Buckman Road Retracement Trail	99,700
ELCA	Historic Santa Fe Foundation	Agua Fria Oral History	2,000
ELTE	GTI Environmental	Historic Buildings/Structures Literature Search	7,000
NTIR	UNM History Department	Historical Vignettes Study	25,098
NTIR	WACC, University of Arizona	CESU Records Management Inventory and File Plan	35,000
OLSP	Recon Environmental	CAS Editing Contract	2,020
ROSI	New Mexico DOT	Roadbed Alignment Documentation	20,000
ROSI	Rutgers University	Economic Impact Study Update	15,000
ROSI	Route 66 Archives and Research Collaboration	Annual Meeting Support	18,654
ROSI	NM Route 66 Association	Road Ahead Collaborative Workshops	17,800
ROSI	Navajo County, AZ	Courthouse Roof Rehabilitation, Holbrook	7,000
ROSI	Route 66 Heritage Foundation of Logan County	ADA Mill Restroom Project, Lincoln, IL	10,720
ROSI	Dellco Corporation	Restoration of Chicken Basket Sign, Willowbrook, IL	17,300
ROSI	Nelson's Old Riverton Store	Floor restoration project, Riverton, KS	6,356
ROSI	Western Host Motel	Motel Foundation Rehab, Carthage, MO	12,500
ROSI	Schwarz Properties	Donut Drive-in Sign Restoration, St. Louis	6,300
ROSI	Terri Ryburn	Sprague Super Service Restoration, Normal	15,699
SAFE	Middle Tennessee State University	Historic Building Survey/Condition Assessments and Historic Structure Report	25,000
SAFE	Middle Tennessee State University	Historic Building Survey in Missouri	15,000
SAFE	Middle Tennessee State University	Historic Records Search for Historic Buildings Associated with SAFE	60,000
SAFE	Kansas SHPO	Historic Building Survey of Kansas	31,605
TRTE	Western Carolina University	Fort Cass Remote Sensing Project, Phase 2	26,997
TRTE	Middle Tennessee State University	Trail of Tears Historic Building Survey	20,000
TRTE	SE Tennessee Development District, Tennessee Valley Authority (TVA)	Blythe Ferry Cooperative Agreement	99,500





Scotts Bluff National Monument

**TABLE 4.** Completed ONPS Base-funded Projects, FY 2016

<b>Trail</b>	<b>Partner</b>	<b>Project Description</b>
<b>CALI</b>	Confederated Tribes of Siletz Indians, Confederated Tribes of the Grande Ronde, Cow Creek Band of Umpqua Tribe of Indians, Oregon DOT, Oregon Travel Experience, Hugo Neighborhood Association and Historical Society	Applegate Trail, Manzanita Rest Stops (three exhibits and two road signs)
<b>CALI/OREG</b>	NPS Midwest Archeological Center and University of Nebraska-Lincoln	Archeological Expressions of the Civil War on the Overland Trails in Nebraska, Phase I
<b>CALI/OREG</b>	Alcove Spring Historical Trust; OCTA	Alcove Spring Charrette and developmental concept plan
<b>CALI/OREG/SAFE</b>	SFTA, KCAHTA	Salem Park (MO) kiosk with three upright exhibits
<b>CALI/OREG/SAFE</b>	Mid-America Regional Council of Governments	3-Trails Transit Center Orientation
<b>(Four Trails)</b>	Wyoming SHPO	Transfer NHT Data from State Website to WyoHistory.org
<b>ELCA</b>	Isleta Pueblo	First Mission Complex Archaeological Analysis
<b>ELCA/ELTE</b>	ELCAT, CARTA, INAH	Laredo (TX) Dos Caminos Workshop
<b>ELTE</b>	ELCAT	2016 Centennial Event at McKinney State Park, Austin, TX
<b>ROSI</b>	Route 66 Archives and Research Collaboration	Strategic Planning/Annual Meeting
<b>SAFE</b>	Kansas SHPO	Kansas National Register Nominations
<b>SAFE</b>	SFTA	Interpretation Workshop for SFTA Board
<b>TRTE</b>	City of Decatur, AL	Interpretive waysides and signage
<b>TRTE</b>	Tennessee Overhill Heritage Association	Cherokee Deportation Routes in Monroe and McMinn Counties, TN
<b>TRTE</b>	TOTA	Interpretation and Capacity Building Workshop
<b>TRTE</b>	TOTA	Webbers Falls Media Development

## TRAIL WEBSITES

The content management system (CMS) interface that National Trails Intermountain Region uses to update its ten websites (the NTIR website and the nine trail-specific websites) requires constant attention and updating as well as additional information and imagery.

### NEW FEATURES:

- Completed required CMS upgrades for ten websites (nine trail websites plus the NTIR website) by the NPS Washington Office and Intermountain Region established deadlines.
- Completed nine Find Your Park experiences for the NPS centennial—these experiences were posted on the FYP webpage and trail-specific webpages.
- Completed significant revisions and troubleshooting of the SAFE mobile app, trained staff at NPS sites along the tour to upgrade relevant pages, and advertised tour via rack cards and site signs.
- Funded the Latino Heritage Internship Program intern, who worked for four months, through Environment for Americas. The final product of the effort was a series of StoryMaps highlighting diverse trail travelers.
- Funded the CESU intern, who worked for four months and improved the SAFE mobile app, through a task agreement in coordination with Stephen F. Austin State University in Texas.

- Under the CTTTP program, successfully funded a project for a digital junior ranger. Also under the CTTTP program, resubmitted a proposal—with significant reworking—for a TRTE mobile app.
- Placed the Three Trails Children’s Narrative/Musical Program, which was held in Santa Fe, NM, in late 2015, on the ELCA, SAFE, and OLSP websites as well as association websites; procured Spanish translation and placed online. Funding was completed through a task agreement. Partners included El Camino Real de Tierra Adentro, Santa Fe, and Old Spanish Trail Associations, and Dolores Valdez de Pong (composer, playwright, seamstress, prop maker).

## VOLUNTEERS-IN-PARKS (VIP) PROGRAM

This year’s budget allowed the office to extend programmatic support to each partner organization.

### KEY ACHIEVEMENTS:

- Facilitated receipt of VIP hours from seven trail associations and filed reports by IMR deadline
- Recruited for and filled one VIP position
- Produced nine Junior Ranger stickers
- Produced eight Junior Ranger handouts
- Created education kit for OSTA VIP



## GEOGRAPHIC INFORMATION SYSTEMS

Geographic Information Systems (GIS) are an integral part of trails programming, as the products are used routinely by in-house and independent researchers, program managers, cultural resource specialists, planners, interpreters, and the public.

The NTIR GIS program oversees the development and ongoing maintenance of the GIS data for Route 66 Corridor Preservation Program and nine national historic trails administered by National Trails Intermountain Region. In addition to the in-house hours devoted to Geographic Information Systems, staff continue to work with the University of Utah Department of Geography DIGIT Lab under a multiyear cooperative agreement established between the National Park Service and the university. The DIGIT Lab assists in the management of the geodatabase for the nine national historic trails. The DIGIT Lab also serves as an additional repository for trail data and provides technical advice and assistance as needed.

### KEY ACHIEVEMENTS:

- Worked on the *Four Trails Feasibility Study* by completing maps, figures, and mileage calculations
- Completed an Auto Tour Route story map conversion
- Operated and monitored the *Pony Express Re-Ride Map Tracker 2016* for the National Pony Express Association
- Implemented and displayed the “green book” locations interactive web map
- Compiled the OLSP CAS Map Series of federal and tribal land and of feasibility alignment differences
- Compiled and displayed a Daughters of the American Revolution (DAR) Marker Map Series for the Kansas City Area Historic Trails Association (Santa Fe National Historic Trail), both by county and by marker
- Converted the Junior Wagon Master Story Map for Santa Fe Trail Association (Santa Fe National Historic Trail)
- Prepared maps for a final mapping workshop in Cimarron, NM with Santa Fe Trail Association (Santa Fe National Historic Trail)
- Served as technical assistant at the Dos Caminos Workshop (El Camino Real de Tierra Adentro National Historic Trail, El Camino Real de los Tejas National Historic Trail) in Laredo, TX
- For the MTSU Historic Building Survey (Trail of Tears National Historic Trail), brought the survey into ArcGIS Online for viewing and configured it to be used for data collection on desktop and mobile devices in the future for this and other surveys
- Undertook the conversion of the NTIR sign planning database and map and completed the web-based viewer for partners and integrated sign plan tool

## RESOURCE ADVOCACY AND PROTECTION

The number of requests to the National Trails Intermountain Region for consultation on large energy projects rose sharply since FY15. Those requests that do come forward are nonfederal undertakings proposed for private lands. National Trails Intermountain Region remains active, however, in many large energy projects that were initiated several years ago. In addition, NTIR staff play a consulting role in environmental compliance processes for several federal land exchanges, mining operations, pipelines, and other developments.

- Reviewed an estimated 225 “undertakings” during the fiscal year. Of those, approximately 40 had a potential to affect, including the following:
  - » Sixteen on the Old Spanish National Historic Trail
  - » Eleven on the California National Historic Trail
  - » Seven on the Trail of Tears National Historic Trail
  - » Four on El Camino Real de Tierra Adentro National Historic Trail
  - » One each on El Camino Real de los Tejas, Mormon Pioneer, Pony Express, and Santa Fe National Historic Trails
- Participated in the following face-to-face consultation meetings, all of which required travel by the National Park Service:
  - » Old Spanish National Historic Trail: four meetings held on November 19-20,

January 14, July 19-20,  
and August 29-30

- » California National Historic Trail: two meetings held on February 24 and June 27-29
- » Trail of Tears National Historic Trail: two meetings held on March 13-18 and August 16-19
- Undertook extensive consultation on the following projects (two or more meetings per month for at least three months):
  - » Moab Master Lease Plan (Old Spanish National Historic Trail)
  - » Lake Powell Pipeline (Old Spanish National Historic Trail)
  - » Plains and Eastern Cleanline (Trail of Tears National Historic Trail)
  - » Desert Renewable Energy Conservation Plan (Old Spanish National Historic Trail)
  - » Long Canyon Mine (California National Historic Trail)
  - » Moab Class I & II with predictive model (Old Spanish National Historic Trail)
  - » Gold Bar Mine (California National Historic Trail)
  - » Unicoi Turnpike Section 106 Violation (Trail of Tears National Historic Trail)
  - » Bald Mountain Mine (Pony Express National Historic Trail)
  - » Poro Tomo Geophysical Exploration (California National Historic Trail)
  - » Emery County Recreation Plan (Old Spanish National Historic Trail)





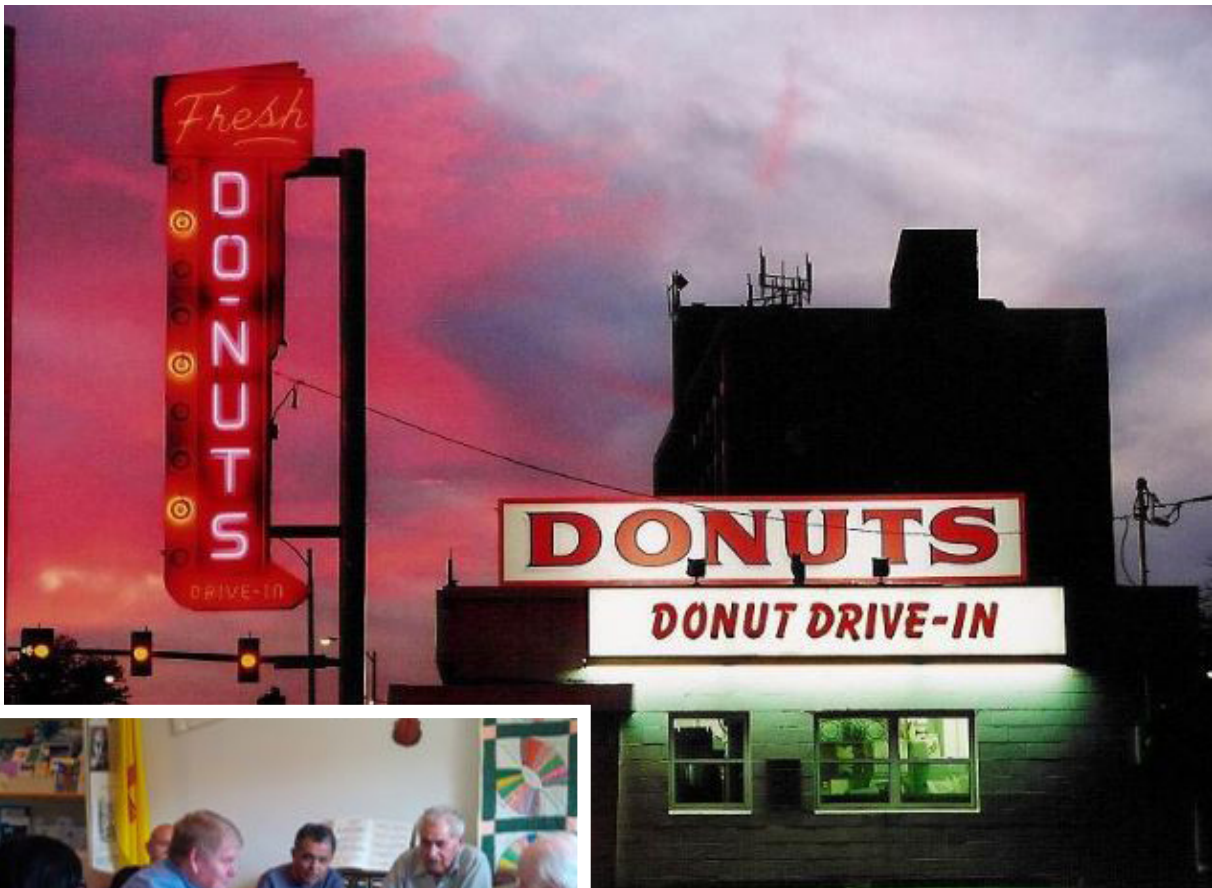
## ROUTE 66 CORRIDOR PRESERVATION PROGRAM

*Congress created the Route 66 Corridor Preservation Program to preserve and commemorate the special places and stories of the American icon, Route 66. The program works with the eight states through which the route passes to raise awareness about the history and significance of the route; identify preservation needs and strategies; and to facilitate collaboration among the states. The program provides technical and financial assistance to preserve the most significant and representative historic properties dating to the highway's period of historic significance (1926-1985). It also assists with preservation planning, research, and educational initiatives. Table 5 lists all ROSI cost-share grant projects for FY16.*

The historic Mill Restaurant, at the southern end of Lincoln, Illinois, received a grant from the Route 66 Cost Share Grant Program for a new, ADA-accessible restroom and other improvements.

**KEY COOPERATORS/PARTNERS:** Local, state, federal, and tribal agencies; Route 66 associations; statewide preservation organizations; educational institutions; State Historic Preservation Offices; departments of transportation; environmental protection agencies; the Road Ahead Initiative; private individuals; and others.





Lena Guidi (left), an intern with the Latino Heritage Internship Program, meets with longtime Santa Rosa-area, N.M. residents as part of her research into the role of Hispanics in the history of U.S. Route 66.

The Donut Drive-in, in the St. Louis, Missouri suburbs, received a grant from the Route 66 Cost Share Grant Program to repair the neon in its historic sign.

- Hosted an intern from the Latino Heritage Internship Program to continue research on the Hispanic legacy of Route 66 (June-September, 2016).
- Cooperated with the Route 66: The Road Ahead Partnership to develop a national framework for collaboration, including support for ongoing research on the economic impacts of historic preservation and heritage tourism on the route (ongoing).

**KEY NTS-IMR ACHIEVEMENTS FOR THE ROUTE 66 CORRIDOR PRESERVATION PROGRAM IN FY16:**

- Launched the Traveling Green on the Mother Road webpages at <https://www.ncptt.nps.gov/rt66/green-travel-66/> (October, 2015).



**TABLE 5. ROSI Cost Share Projects FY 2016**

Grant Name	Project Description	Cost Share	Partner Match
<b>Sprague Super Service, Normal, IL</b>	Repair and stabilize exterior stucco and masonry; rehabilitate fenestration	\$15,699	\$15,699
<b>Del Rhea Chicken Basket, Willowbrook, IL</b>	Neon sign restoration	\$17,300	\$17,300
<b>Mill Restaurant, Lincoln, IL</b>	Building accessibility, including entrance and bathroom	\$10,720	\$12,000
<b>Donut Drive-In, St. Louis, MO</b>	Restore three fluorescent signs	\$6,300	\$6,300
<b>Navajo County Courthouse, Holbrook, AZ</b>	Develop a roof repair and replacement plan	\$7,000	\$7,000
<b>Western Host Motel, Grants, NM</b>	Door rehabilitation project	\$12,500	\$12,500
<b>Rialto Square Theatre, Joliet, IL</b>	Marquee Restoration Project	\$27,855	\$27,855
<b>TOTAL</b>		<b>\$97,374</b>	<b>\$98,654</b>



Del Rhea's Chicken Basket, in the Chicago suburb of Willowbrook, received a grant from the Route 66 Cost Share Grant Program for repairs to its historic sign iconography.



- Hosted the annual Research Route 66 meeting in Albuquerque, NM in cooperation with the University of New Mexico Center for Southwest Research and the New Mexico Route 66 Association (April, 2016).
- Cooperated with the Arizona State Department of Transportation on the ongoing Arizona Route 66 Historic Roadbed Survey.
- Cooperated with the California Preservation Foundation to complete the California Route 66 Historic Property Survey in the desert region and to initiate a road alignment and property survey from San Bernardino to Pasadena.
- Initiated a CESU agreement with New Mexico State University to geo-rectify the New Mexico Department of Transportation historic as-built documents for Route 66.

