



2017

# National Trails Intermountain Region

FY2017 SUPERINTENDENT'S ANNUAL REPORT







# Contents



Acronym List .....	4
Executive Summary of Fiscal Year 2017.....	6
Administration and Staffing .....	9
Organization and Purpose .....	9
Budgets.....	9
Staff Changes .....	11
Core Operations .....	12
Partnerships and Programs.....	12
Trail Studies and Planning .....	12
Trail Administration .....	14
California National Historic Trail .....	14
El Camino Real de los Tejas National Historic Trail.....	18
El Camino Real de Tierra Adentro National Historic Trail .....	20
Mormon Pioneer National Historic Trail .....	22
Old Spanish National Historic Trail .....	23
Oregon National Historic Trail .....	26
Pony Express National Historic Trail .....	29
Santa Fe National Historic Trail .....	31
Trail of Tears National Historic Trail.....	34
NTIR Trails Project Summary .....	38
Trail Websites.....	39
Volunteers-in-Parks (VIP) Program .....	40
University-Based Partnerships.....	40
Geographic Information Systems .....	41
Resource Advocacy and Protection .....	42
Route 66 Corridor Preservation Program.....	44







## Acronym List

<b>BLM</b>	Bureau of Land Management	<b>ELCA</b>	El Camino Real de Tierra Adentro National Historic Trail
<b>CALI</b>	California National Historic Trail	<b>ELCAT</b>	El Camino Real de los Tejas National Historic Trail Association
<b>CESU</b>	Cooperative Ecosystem Studies Unit	<b>ELTE</b>	El Camino Real de los Tejas National Historic Trail
<b>CTTP</b>	Connect Trails to Parks	<b>FLAP</b>	Federal Lands Access Program
<b>DCP</b>	Developmental Concept Plan	<b>GIS</b>	Geographic Information Systems
<b>DIGIT</b>	Digitally Integrated Geographic Information Technologies	<b>GPO</b>	Government Printing Office
<b>DOT</b>	Department of Transportation	<b>IAWC</b>	Interpretive Association of Western Colorado
		<b>IMR</b>	Intermountain Region (National Park Service)
		<b>INAH</b>	Instituto Nacional de Antropología e Historia (Mexico)
		<b>MOPI</b>	Mormon Pioneer National Historic Trail
		<b>NHT</b>	National Historic Trail
		<b>NPF</b>	National Park Foundation
		<b>NPS</b>	National Park Service
		<b>NTIR</b>	National Trails Intermountain Region
		<b>OCTA</b>	Oregon-California Trails Association
		<b>OLSP</b>	Old Spanish National Historic Trail
		<b>OREG</b>	Oregon National Historic Trail
		<b>PECO</b>	Pecos National Historical Park
		<b>POEX</b>	Pony Express National Historic Trail
		<b>RIM</b>	Resources Information Management
		<b>ROSI</b>	Route 66 Corridor Preservation Program





Wagon wheels, Oregon Trail

- RTCA** Rivers Trails and Conservation Assistance program
- SAFE** Santa Fe National Historic Trail
- SFTA** Santa Fe Trail Association
- SWBRPP** Southwest Border Resource Protection Program
- TOTA** Trail of Tears Association
- TRTE** Trail of Tears National Historic Trail
- UNM** University of New Mexico
- USFS** United States Forest Service
- USFWS** United States Fish and Wildlife Service

- VIP** Volunteers-in-Parks (NPS program)
- WACC** Western Archeological and Conservation Center







## Executive Summary of Fiscal Year 2017

Pony Express Station in Gothenburg, Nebraska. Staff, in recent years, inventoried the various stations and sites all along the Pony Express National Historic Trail

### OCTOBER 1, 2016 – SEPTEMBER 30, 2017

This document enumerates a considerable number of trail-specific accomplishments. This summary includes the following sampling of significant staff accomplishments that have impacted most of the trails that the National Trails Intermountain Region (NTIR) administers:

- To address different treatments of high potential sites and segments among the various national historic trails, a working group with several NTIR staff was formed on this subject. The group met several times in 2017 to develop standard eligibility criteria, and to re-evaluate resources along the various trails in relation to those criteria. Efforts plan to be completed during the next fiscal year (FY) with implementation anticipated by FY 2019.

- In preparation for upcoming office moves in both Santa Fe, NM and Salt Lake City, UT, the National Trails Intermountain Region teamed with the Western Archeological and Conservation Center (WACC) to examine and inventory all trail-related permanent records. WACC staff visited both offices and inventoried a broad range of common user files, along with records from individual staff offices. At the Santa Fe office, a Records Management task force, led by the administrative officer, worked towards creating a standard file naming system and a common-user file structure.
- In preparation for the 50th anniversary of the passage of the 1968 National Trails System Act, the NTIR staff, in all three offices, formed a working group and contacted colleagues in various partnership associations and other entities to plan anniversary-related events.
- The NTIR team engaged, for the first time, with the agency's Southwest Border Resource Protection Program (SWBRPP), which provides financial and technical assistance to parks and partners along the United States (US)-Mexico border. NTIR staff and partners submitted three FY 2017 proposals, two of which were funded.
- The office collaborated with the agency's Business Management Group for an NTIR business plan. Two Harvard University interns, Katherine Donato and Elena Hoffnagle, spent the summer working on the project. In mid-August, they completed a draft of the *2017 Business Plan*.
- The National Park Service entered into 25 new partnership certifications with non-federal property owners during the year. Seven of these certifications took place on the California National Historic Trail (CALI); six on the Mormon Pioneer National Historic Trail (MOPI); four on the Oregon National Historic Trail (OREG); three on both El Camino Real de los Tejas National Historic Trail and the Pony Express National Historic Trail (POEX); and one each on the Old Spanish and Santa Fe national historic trails (OLSP and SAFE).
- The NTIR's Cultural Resources Team represented the National Park Service in 186 compliance reviews for external undertakings with potential to affect one or more of NTIR's national historic trails. Federal Partners in the compliance effort comprise the various land management agencies, primarily the Bureau of Land Management, Tennessee Valley Authority, US Forest Service, US Fish & Wildlife Service, and the US Army Corps of Engineers, along with members of various partnership associations.
- NTIR staff prepared and presented a keynote presentation on the evolution of North American trails for the Applied Preservation Technology Association in March 2017.

- NTIR staff prepared and presented a paper (later published in the *Overland Journal*) on the development of the transcontinental railroad and its impacts on the emigrant and mail trails.
- NTIR staff attended a follow-up meeting in Mexico City in order to coordinate with Mexico (Instituto Nacional de Antropología e Historia [INAH]) on common trail preservation/protection efforts to implement ELCA/ELTE action plans agreed upon at the Dos Caminos bi-national Laredo workshop. Future events with Instituto Nacional de Antropología e Historia include participation in an October 2017 workshop in Zacatecas, Mexico, and a database workshop to be held in Santa Fe in March 2018.
- The office hosted a Teacher to Ranger to Teacher (Caleb Williss), from Highlands Ranch, CO, who reviewed the existing trail-related curriculum and created an NHT lesson plan for hosting on each trail website. He created the first-ever education pages on trail websites and posted information on the NPS Education Portal.
- Much progress has taken place with the Junior Wagon Master Program, with uploaded story maps, new Freighter and Bullwhacker booklets, and new Junior Ranger Program materials related to all nine national historic trails.
- The production of rack cards and posters, which were developed for the Find Your Park campaign (in 2016), continued into FY 2017. Office staff produced at least one rack card and poster for each of the nine national historic trails administered or co-administered by the National Trails Intermountain Region.
- NTIR staff engaged in discussions to expand the existing standard family of pedestrian signs. The staff brainstormed, mocked-up, and presented new pedestrian sign options.
- The National Trails Intermountain Region remains committed to a safe workplace environment. Throughout the year, various staff presented a “safety minute” once per month. This attention to safety has played a major role in the absence, among staff, of work-related, lost-time injuries. The staff’s Santa Fe-based Geographic Information System (GIS) specialist served as the coordinator to complete the new *National Trails Intermountain Region Safety Plan*, setting standards and championing safety in the office.



## SECTION TWO



Oregon Trail Interpretive  
Center near Baker City, OR.

## Administration and Staffing

*The National Trails Intermountain Region administers nine national historic trails and a historic corridor preservation program. In addition, it has been charged with writing three ongoing trail feasibility studies and one comprehensive administrative strategy.*

### ORGANIZATION AND PURPOSE

The NTIR staff in Santa Fe, NM with branch offices in Salt Lake City, UT and Albuquerque, NM, administer the following national historic trails: California, El Camino Real de Tierra Adentro, El Camino Real de los Tejas, Mormon Pioneer, Old Spanish, Oregon, Pony Express, Santa Fe, and Trail of Tears. In addition, the

Santa Fe staff administers the Route 66 Corridor Preservation Program (ROSI). El Camino Real de Tierra Adentro and Old Spanish national historic trails are co-administered with the Bureau of Land Management.

### BUDGETS

In FY 2017, the National Trails Intermountain Region received \$3,524,700 in Operations of the National Park Service (ONPS) funding. In addition, the NTIR team received \$110,000 for planning and \$227,200 for Connect Trails to Parks (CTTP) projects. See table 1 for details on funding by trail.





**TABLE 1. NTIR Funding for FY 2017.**

<b>Funding Source</b>	<b>Trail or Program</b>	<b>Received</b>
<b>ONPS</b>	Santa Fe National Historic Trail	\$702,900
	Trail of Tears National Historic Trail	\$461,100
	Oregon National Historic Trail	\$428,700
	California National Historic Trail	\$345,500
	Route 66 Corridor Preservation Program	\$287,100
	El Camino Real de Tierra Adentro National Historic Trail	\$285,100
	Pony Express National Historic Trail	\$248,500
	Mormon Pioneer National Historic Trail	\$242,500
	Old Spanish National Historic Trail	\$240,600
	El Camino Real de los Tejas National Historic Trail	\$196,000
	Masau Trail	\$33,700
	Additional NPS Funding from Other Sources	\$53,000
	<b>Total ONPS Funding</b>	<b>\$3,524,700</b>
<b>Planning</b>	Four Trails (OREG, CALI, MOPI, POEX) Feasibility Study Amendment/ Environmental Assessment	\$65,000
	Butterfield Overland Trail Special Resource Study/Environmental Assessment	\$25,000
	Old Spanish NHT Comprehensive Administrative Strategy	\$20,000
	<b>Total Planning</b>	<b>\$110,000</b>
<b>Connect Trails to Parks (CTTP)</b>	Trail of Tears National Historic Trail – Archeo survey, documentation, and trail plan, Cherokee National Forest	\$99,500
	California National Historic Trail – City of Rocks National Reserve (ID) Visitor Experience Enhancement Project	\$63,100
	Santa Fe National Historic Trail Preservation – Plan for Comanche National Grassland (CO) and Cimarron National Grassland (KS)	\$52,400
	Santa Fe National Historic Trail – Dual Language Digital Story Map, Ft. Larned National Historic Site (KS)	\$12,200
	<b>Total CTTP</b>	<b>\$227,200</b>
<b>Total</b>	<b>\$3,861,900</b>	



## STAFF CHANGES

**Lynne Mager**, interpretive specialist, retired in December 2016

**Derek Nelson**, GIS specialist, departed the staff in July 2017

**Lena Guidi**, University of New Mexico (UNM) Latino Heritage Internship Program intern, completed her work in December 2016

**Emmanda (Emma) Wilson**, interpretive (and digital media) intern, completed her work in June 2017



Fort Laramie, Wyoming

**Philip Taccetta**, UNM landscape architect intern, completed his work in November 2016

**Brian Griffith**, UNM landscape architect intern, completed his work in August 2017

**Vanessa Funston**, UNM cultural resources intern, completed her work in Spring 2017

**Courtney Brock**, UNM Resources Information Management intern, began her work in Fall 2017

**Gianna May Sanchez**, UNM Latino Heritage Internship Program intern, completed her work in August 2017

**Elena Hoffnagle**, business plan intern, served from June to August 2017

**Katherine Donato**, business plan intern, served from June to August 2017

**Caleb Williss**, Teacher to Ranger to Teacher intern, served from June to July 2017

**(Patricia) Diane Weddington**, Student Conservation Association intern, began work in September 2017

**Maria Nemelka**, UNM Spanish-Portuguese Department intern, began work in September 2017





## Core Operations

### PARTNERSHIPS AND PROGRAMS

Each national historic trail has a primary partner organization that supports trail-related research, interpretation, and development, as well as promoting public interest and heritage tourism. The National Trails Intermountain Region provides limited financial assistance to several of these organizations from its base ONPS funding. Table 2 identifies the financial assistance that the National Trails Intermountain Region provided to trail organizations in FY 2017.

### TRAIL STUDIES AND PLANNING

*The National Trails Intermountain Region is conducting two feasibility studies and a special resource study in response to provisions in the 2009 Omnibus Public Lands Management Act, a special resource study in response to the same congressional act, and one comprehensive administrative strategy.*

Much progress was made in FY 2017 on two of these four documents. Regarding the Butterfield Overland Trail Special Resource Study, which

**TABLE 2. NTIR Organizational Support for FY 2017**

<b>Partner Organization</b>	<b>Funding Provided</b>
Trail of Tears Association (for Trail of Tears National Historic Trail)	\$ 149,135
Santa Fe Trail Association (for Santa Fe National Historic Trail)	\$ 141,327
Oregon-California Trails Association (for the Oregon and California national historic trails)	\$ 133,470
Old Spanish Trail Association (for Old Spanish National Historic Trail)	\$ 82,500
El Camino Real de los Tejas National Historic Trail Association (for El Camino Real de los Tejas National Historic Trail)	\$ 75,050
National Pony Express Association (for Pony Express National Historic Trail)	\$ 65,350
<b>Total</b>	<b>\$646,832</b>

concerned an 1858-1861 stagecoach route between the Mississippi River and San Francisco, CA, the draft study was completed in December 2016, and the final study was completed in May 2017. But based on changes in the NPS’s planning process, both the regional and Washington offices recommended that all elements of the environmental assessment be removed and that the study be finalized as a “categorical exclusion.” After staff implemented those provisions, the regional director approved the final study in early July 2017. Officials at both the agency and departmental levels reviewed the study for the remainder of the fiscal year.

The congressionally designated revision of four feasibility and suitability studies (P.L. 111-11, Sec. 5302), in order to examine the eligibility of adding new routes to the existing Oregon, California, Mormon Pioneer, and Pony Express national historic trails, made great strides

during this period. At the beginning of the fiscal year, the draft study had been completed and was undergoing internal review. In September 2017, however, agency planners advised trails staff that due to changes in planning guidelines, the study would be subject to a “categorical exclusion.” Based on that decision, trails staff spent the remainder of the fiscal year responding to that decision.

Less progress was made on two additional studies. The study of the Chisholm and Great Western cattle trails, mandated by Congress, remained under agency review. Similarly, office staff completed a draft comprehensive administrative strategy for Old Spanish National Historic Trail with the Bureau of Land Management in 2016, but by the end of FY 2017, the final comprehensive administrative strategy had not yet been completed.

## SECTION FOUR



## Trail Administration

Sutter's Fort State Historic Park, which became a California National Historic Trail certified partner in 2017, has an active educational program for Sacramento-area children.

### CALIFORNIA NATIONAL HISTORIC TRAIL

*Congress authorized the California National Historic Trail in 1992. Spurred by James Marshall's gold discovery in early 1848, the trail witnessed the passage of hundreds of thousands of westering emigrants during the 1840s, 1850s, and 1860s. The trail's many routes followed a broad corridor (which narrowed as it headed west) from the Missouri River to southwestern Wyoming. Farther west, in Nevada, various routes split and led over various Sierra Nevada passes into California's Central Valley. Along many portions of the California Trail—from the Missouri River all the way to California—the trail is shared with the Mormon Pioneer, Oregon, and Pony Express national historic trails.*





Fort Kearny State Historical Park, in Nebraska, was a key destination for emigrants along both the Oregon and California national historic trails.

**KEY PARTNERS/COOPERATORS:** Oregon-California Trails Association and its chapters, Bureau of Land Management, US Forest Service, NPMAP (a suite of web map tools for the National Park Service), Harpers Ferry Center, Oglala Lakota College, Humboldt State University, City of Rocks National Reserve, the Shoshone-Bannock Tribes, State of Utah, and the California Department of Transportation (Caltrans).

**KEY ACHIEVEMENTS:**

- Prepared substantial portions of a comprehensive plan for a 46-mile recreational trail system, for pedestrians and bicyclists, in the greater Kansas City (MO/KS) area, in cooperation with the Mid-America Regional Council, which is the designated Metropolitan Planning Organization for this area, and Vireo, a consulting landscape architecture firm.
- Completed a paper on the building of the transcontinental railroad and its impacts on emigration, stagecoach, and mail traffic along the California Trail. This paper was

jointly authored by two trails employees. It was presented at the OCTA's annual meeting and also published in OCTA's *Overland Journal*.

- Completed an interpretive wayside plan for the Applegate Trail. Based on the plan, a number of waysides for this trail are now in the fabrication stage.
- Continued working on the multi-year Oglala Lakota filming project. Funded an audio description of the film and reviewed transcripts, received an initial film draft, exhibited it to staff and sent comments to the principal investigator for incorporation into the final product. Project partners included Oglala Lakota College, Humboldt State University, and Director David Scheerer.
- As a follow-up to the four-day charette that was held in August 2016 for the Pappan's Ferry developmental concept plan (DCP) in Topeka, KS, undertook an extensive review of the document's interpretive component, assisted by the City of Topeka, Shawnee County, Topeka Riverfront Authority, OCTA members, and other partners. By the end of the fiscal year, a final document was anticipated. NTIR staff also completed and distributed charette-related posters.
- Because a major portion of the California National Historic Trail route was subject to a total solar eclipse on August 21, 2017, publicized relevant information about the eclipse on the OREG/CALI Facebook page and linked this information to the appropriate NPS trail web pages.



Peplin Cut, just northwest of Great Salt Lake, was constructed by Central Pacific workers in early 1869, just before the rails reached Promontory.



Ash Hollow State Historical Park, along the California and Oregon national historic trails in Nebraska, was certified in 2017.

- Placed orders for signs in Johnson County, KS, and later in the fiscal year, delivered and installed the signs.
- Working in cooperation with local OCTA members, completed a draft sign plan for Lawrence, KS.
- Partnering with OCTA members and a local partnership group, initiated a sign planning project in western Nebraska. Also—again working with the Oregon-California Trails Association—finalized a sign plan for Summit County, UT, just east of the Salt Lake City area.
- Wrote, formatted, and printed two newsletters for the Oregon and California national historic trails.
- Revised the Auto Tour Route guides and maps for both Nebraska/Northeastern Colorado (first published in August 2006) and Wyoming (first published in July 2007). After locating the original files for text, photos, graphics, and maps, staff updated, corrected as necessary, and formatted both volumes and submitted them for publication.
- Worked at City of Rocks National Reserve, ID on an interpretive wayside project, in partnership with NPS staff and Shoshone-Bannock tribal representatives.
- Continued the design of seven interpretive panels at Camp Guernsey, WY as a result of collaboration between the National Park Service and camp employees.
- Represented the National Park Service on the following key undertakings with potential to affect: Long Canyon Gold Mine, Timpie Point/Horseshoe Solar Array Proposal, and the Pipeline Replacement



on Sublette Cutoff. Partners included the Bureau of Land Management and the State of Utah.

- Completed a draft of a California state sign plan (which will provide designs and locations of proposed trail-related highway signs) in cooperation with Caltrans by NTIR staff, along with OCTA members. However, no signs have yet been installed.
- Initiated a planning project at Ash Hollow State Historical Park (Nebraska) related to Connect Trails to Parks funding. The project partner was the Nebraska Game and Parks Department.
- Initiated project with a University of Missouri graduate student (through the Great Rivers Cooperative Ecosystem Studies Unit [CESU] to determine the impact of the “Bleeding Kansas” and Civil War periods on traffic along the California Trail as well as other long distance trails.
- Added seven new properties along the California National Historic Trail as certified partners during the year, four of them for more than one national historic trail. The new properties included the following:
  1. Ash Hollow State Historical Park, near Lewellen, NE, certified December 31, 2016 (Oregon and California national historic trails)
  2. Fort Kearny State Historical Park, near Kearney, NE, certified December 31, 2016 (Oregon and California national historic trails)

3. Rock Creek Station State Historical Park, near Fairbury, NE, certified December 31, 2016 (Oregon and California national historic trails)
4. Legacy of the Plains Museum, in Gering, NE, certified January 14, 2017 (Oregon and California national historic trails)
5. Old Sacramento State Historic Park, in Sacramento, CA, certified June 8, 2017 (California National Historic Trail)
6. Sutter’s Fort State Historic Park, in Sacramento, CA, certified June 8, 2017 (California National Historic Trail)
7. Lander Trail New Fork River Crossing Historical Park, Big Piney, WY, certified June 28, 2017 (California National Historic Trail)



Independence Rock, west of Casper, WY, was an iconic landmark on the overland trail corridor.



## EL CAMINO REAL DE LOS TEJAS NATIONAL HISTORIC TRAIL

*During the Spanish Colonial era, the El Camino Real de los Tejas National Historic Trail, which Congress authorized in 2004, was a “royal road” that provided an overland route from Mexico and across the Río Grande to Los Adaes in what now is western Louisiana.*

**KEY PARTNERS/COOPERATORS:** El Camino Real de los Tejas National Historic Trail Association (ELCAT), GTI Environmental, LLC., Instituto Nacional de Antropología e Historia, Southwest Border Resource Protection Program, Texas Historical Commission, and Texas Parks and Wildlife Department.

### KEY ACHIEVEMENTS:

- Completed two waysides by staff; the partner for both was El Camino Real de los Tejas National Historic Trail Association.



Trails staff, in 2017, made considerable efforts to develop the Lobanillo Swales Retracement Trail, in eastern Texas, for visitor use.

- Regarding the Lobanillo Swales, which are historic trail swales located in Sabine County, TX, worked with ELCAT representatives and completed a series of bilingual waysides at the site. Also at the site, trails staff completed a set of construction drawings, after which they visited the site to assist with site development by staking out the site’s parking lot, trailhead, and trail system.
- Worked on completing a rack card for the trail, which will be widely distributed at visitor outlets along the trail corridor.
- Helped sponsor, in early November 2016, the last of the trails office’s centennial events, which was held at McKinney Falls State Park, near Austin, TX. The event was later publicized in *Inside NPS*, an agency-wide newsletter.
- In cooperation with El Camino Real de los Tejas National Historic Trail Association, completed new sign plans for three Texas counties: Dimmit, Goliad, and Wilson. Revised the sign plan for Nacogdoches County, TX.
- Initiated activity related to a Junior Ranger program for the trail and created the explanatory document about the program.
- Prepared three research proposals from trails staff for this trail to the Southwest Border Resource Protection Program. Two of these proposals were later approved for funding, including one to fund a research study of indigenous tribes along the trail in central and southwestern Texas.



McKinney Falls Event = In early November 2016, an NPS centennial event—overseen by a Texas Parks and Wildlife Department ranger—was held at McKinney Falls State Park, near Austin.

- Added three properties as certified partners during the year. The new properties included the following:
    1. Lobanillo Swales, near Geneva, TX, certified October 14, 2016
    2. Baumann Family Village Sites, near Gause, TX, certified November 28, 2016
    3. Wise Family Village Site, near Gause, TX, certified February 8, 2017
  - On the heels of the successful Dos Caminos workshop, which was held in Laredo, TX in June 2016, took a lead role in translating, editing, and printing a bilingual report on the workshop and its primary accomplishments by the trails office.
  - Six months after the Dos Caminos workshop, held a follow-up meeting in Mexico City where NTIR staff worked with Mexico’s Instituto Nacional de Antropología e Historia to coordinate trail preservation/ protection efforts and implement action plans generated at the workshop.
  - Took part in a new bi-national working group organized by Dr. José Francisco Román Gutiérrez from the University of Zacatecas by NTIR staff. A meeting of that working group was held in Zacatecas, Mexico, in October 2017.
- The following actions applied to both El Camino Real de los Tejas National Historic Trail and a nearby trail, El Camino Real de Tierra Adentro National Historic Trail (see the following section for more information):
- Took part in a SWBRPP partnership-building meeting in El Paso, TX, related to the Oñate Crossing project by trails staff and ELCAT staff. (see following section for more information)





Fort Selden State Monument, along the Rio Grande just south of the Jornada del Muerto, served as a longtime trailside campground before the fort was built in 1865.



At the Yost Escarpment, along the Jornada del Muerto in southern New Mexico, the old trail is still clearly visible.

## EL CAMINO REAL DE TIERRA ADENTRO NATIONAL HISTORIC TRAIL

*The El Camino Real de Tierra Adentro National Historic Trail is one of the oldest roads in the US, and was authorized as a national historic trail in 2000. It is a timeless route of trade and cultural exchange and interaction among Spaniards and other Europeans, American Indians, Mexicans, and Americans. This internationally significant trail is co-administered by the Bureau of Land Management and the National Park Service.*

**KEY PARTNERS/COOPERATORS:** El Camino Real de Tierra Adentro Trail Association, Instituto Nacional de Antropología e Historia, Bureau of Land Management, United States Forest Service, UNM School of Architecture and Planning's Historic Preservation and Regionalism Program, UNM Spanish-Portuguese Department, Agua Fria Village Association, New Mexico State Historic Preservation Office, Isleta Pueblo, University

of Utah DIGIT Lab, US Government Printing Office (GPO), Southwest Border Resource Protection Program, Friends of the Texas Historical Commission, Spaceport America, Gutiérrez-Hubbell House, and Bernalillo County Open Space and Cultural Services.

### KEY ACHIEVEMENTS:

- Continued work with UNM Historic Preservation and Regionalism Program, which started in 2015, to document historic buildings associated with this historic trail. Deliverables will provide important data for Bernalillo County ELCA urban trail systems.
- Working with partners Cornerstones Community Partnerships and the Santa Fe National Forest, oversaw completion of the La Bajada roadbed condition assessment and pilot stabilization project.



- In collaboration with New Mexico State Historic Preservation Office, and working with the Santa Fe National Forest, listed La Bajada's North Section on the state historic register and forwarded it to the Keeper of the National Register for listing on the National Register for Historic Places.
- Through a cooperative agreement with Isleta Pueblo, completed a historic roads survey project on El Camino Real de Tierra Adentro National Historic Trail and on other trails surrounding the pueblo.
- Updated and printed the El Camino Real de Tierra Adentro map and guide. Worked on this project with the Bureau of Land Management, the University of Utah DIGIT Lab, and the US Government Printing Office.
- Continued working with the Agua Fria Village Association to produce a map detailing the historic resources in the Agua Fria area.
- Created and finalized road and pedestrian sign plans for the Buckman Road retracement trail project, which has been finalized and forwarded to the contractor. Reviewed construction drawings for accuracy and made sure all of the signs were the correct type and in the correct location. Partners included Santa Fe County, Bureau of Land Management, and the US Forest Service.
- Completed various follow-up activities and products related to the Dos Caminos Workshop, which was held in Laredo, TX in June 2016 (see the previous section for more information about these activities.)
- Served as an active, new partner with the agency's Southwest Border Resource Protection Program by 1) attending a partnership-building meeting in El Paso, 2) serving on a project review panel, and 3) successfully applying for several SWBRPP-funded projects.
- Initiated a CESU-sponsored Spanish-language translation project, with a UNM Spanish-Portuguese Department graduate student, which will include translation of ELCA travel itinerary and wayside exhibits.
- Worked with a contractor to commence the successful Oñate Crossing project, a cultural landscape report and historic structures report that focuses both on the Old Fort Bliss-Hart's Mill site (in El Paso, TX) and various trail-related historic sites in Ciudad Juarez, Chihuahua, Mexico.
- Worked to secure future agreements with the group Friends of the Texas Historical Commission.
- Worked with Bernalillo County to plan for, and participate in, the annual Camino Real Trade Fair, which is held at the Gutiérrez-Hubbell House in Albuquerque's South Valley. Assistance also provided for a trail-related speakers series which was held at the same facility.
- Visited the Spaceport America site, and the nearby Jornada del Muerto, to work with facility staff on common goals and to map out future projects. Trails staff also visited the Yost Escarpment Trail, Point of Rocks, Ojo de Perrillo, Oñate Crossing and La Joya de Sevilleta.



A statue of Brigham Young is located in Salt Lake City's Temple Square, at the western end of the Mormon Pioneer National Historic Trail. The statue was part of the multiple property nomination form project, with Brigham Young University.



NTIR staff and trail partners visit the Seven Mile Creek Swales, a remnant of the 1846 Mormon Emigration, located near Murray, in Clarke County, Iowa.



Nauvoo Landing, on the Illinois side of the Mississippi River, served as the beginning of the Mormon emigration in February and March 1846.

## MORMON PIONEER NATIONAL HISTORIC TRAIL

*The Mormon Pioneer National Historic Trail, which Congress authorized in 1978, commemorates those Church of Jesus Christ of Latter-day Saints who left Nauvoo, IL in 1846 and continued on to the Great Salt Lake Valley the following year. Along many portions of the trail—from the Missouri River all the way to Utah—the trail is shared with the California, Oregon, and Pony Express national historic trails.*

**KEY PARTNERS/COOPERATORS:** Church of Jesus Christ of Latter-Day Saints, Iowa Mormon Trails Association, Brigham Young University, Utah State Historic Preservation Office, and various owners of historic sites and historic trail segments.

### KEY ACHIEVEMENTS:

- Initiated consultations with the Church of Jesus Christ of Latter-day Saints historic sites director and staff to develop working relationships and partnerships. The talks opened the door to staff from the two organizations cooperating on planning reviews.
- Engaged in meetings—in Illinois, Iowa, and Nebraska—with landowners and with members of the Iowa Mormon Trails Association regarding site certification, interpretation, signage, and other trail-related matters. Visited sites included the Winter Quarters visitor center in Florence, NE; Council Bluffs, Richardson's Point, 7-Mile Creek Camp, and Mt. Pisgah, IA; and several sites in Nauvoo, IL.



- Received, reviewed, and revised the MOPI multiple property documentation form and two National Register nominations that are being prepared by Brigham Young University staff. Then, initiated a Utah State Historic Preservation Office review.
- While partnering with OCTA members and a local partnership group, initiated a sign planning project in western Nebraska. Also—again working with Oregon-California Trails Association—finalized a sign plan for Summit County, UT, just east of the Salt Lake City area.
- Added six new properties as certified partners during the year. The new properties included the following:
  1. Legacy of the Plains Museum, in Gering, NE, certified January 14, 2017
  2. Mormon Pioneer Historic Trailside Park, near Garden Grove, IA, certified June 20, 2017
  3. Prairie Trails Museum of Wayne County, in Corydon, IA, certified June 21, 2017
  4. Florence Mill, just north of Omaha, NE, certified July 4, 2017
  5. Joseph Smith Historic Site, in Nauvoo, IL, certified July 7, 2017
  6. Richardson’s Point, near Milton (Keosauqua area), IA, certified July 25, 2017

## OLD SPANISH NATIONAL HISTORIC TRAIL

*The Bureau of Land Management and National Park Service jointly administer this historic trade route, which was active between Santa Fe and Los Angeles during the period from 1829 to 1848. Congress authorized Old Spanish National Historic Trail in 2002.*

**KEY PARTNERS/COOPERATORS:** Old Spanish Trail Association, Bureau of Land Management, US Forest Service, US Fish and Wildlife Service (USF&WS), Harpers Ferry Center, National Park Foundation (NPF), Koosharem Band of the Southern Paiute, Interpretive Association of Western Colorado, Aztec Ruins National Monument, State of Utah, and Sevier County, UT.

### KEY ACHIEVEMENTS:

- Continued several large proposed development projects along the trail corridor during FY 2017. Trails staff, therefore, worked with BLM staff, and in some cases with the State of Utah, to respond to several proposed key undertakings that had the potential to affect trail resources. These projects included the Verde Transmission Line, the Aztec East Arterial, the Lake Powell Pipeline, and the Moab Old Spanish Recreation Plan. The National Park Service served as the cooperating agency for several of these project proposals.



Looking Glass Rock, located in northern San Juan County near Moab, UT, was part of a recreational-strategy document which was part of a joint effort with the San Juan County and the Bureau of Land Management.

- Made progress in completing the final version of the trail’s comprehensive administrative strategy. Trails staff assisted with review comments and editing; with updating trail mapping; and with updating the trail’s list of high potential sites and segments.
- Completed the first major exhibit project undertaken along the Old Spanish National Historic Trail which was unveiled at Koosharem Reservoir in Sevier County, UT. Project partners included the Koosharem Band of the Southern Paiute and the US Fish and Wildlife Service. The various exhibit panels oriented visitors to the recreational opportunities offered at Koosharem Reservoir, and they also told historical stories about the area from the perspective of the Koosharem Band members.
- Completed and installed other new waysides along the trail, both in Colorado and New Mexico. Partners included the agency’s Harpers Ferry Center, the National Park Foundation, the Old Spanish Trail Association, the Bureau of Land Management, the Interpretive Association of Western Colorado, and Aztec Ruins National Monument.
- Created and finalized a sign plan to mark a stretch of historic route between Delta and Grand Junction, CO. Worked with partners from Old Spanish Trail Association and Interpretive Association of Western Colorado (IAWC).



- In response to an Active Trails Grant that the National Park Foundation awarded to the National Trails Intermountain Region, held a late-season (October 2016) Active Trails event in Grand Junction, CO, intended to attract new trail visitors through hiking, bicycling, and horseback riding. This was an NPS centennial event, in which a new retracement trail was opened to the public. On the heels of that event, ordered several interpretation panels for the site, which were installed in September 2017. Partners included Mesa County, the City of Grand Junction, the Grand Valley Trails Alliance, and the Interpretive Association of Western Colorado. An NTIR-authored article on the event later appeared in *Spanish Traces*, the OSTA journal.
- In anticipation of the completion of the trail’s comprehensive administrative strategy, received the first partnership certification for the Old Spanish National Historic Trail for the Fort Uncompahgre Interpretive Center in Delta, CO. The certification became official on July 5, 2017.
- Accompanied Bureau of Land Management trail officials on planning sessions to increase NTIR’s role in various recreational-strategy documents for portions of the Old Spanish National Historic Trail in Utah. This involved reconnaissance trips along the route, together with meetings at Salina, in Sevier County, and Moab, in Grand County.



At the “Back to the Trail” centennial event, which was held in Grand Junction, CO in October 2016, participants had the opportunity to ride along a portion of the Old Spanish National Historic Trail.



A series of silhouettes outside of Green River, UT, is reminiscent of an Old Spanish Trail mule train.



During 2017, staff worked with their counterparts at Aztec Ruins National Monument on an Old Spanish Trail retracement route.

## OREGON NATIONAL HISTORIC TRAIL

*Congress authorized the Oregon National Historic Trail in 1978. This iconic trail, which runs between Missouri and Oregon, witnessed the passage of hundreds of thousands of westering emigrants during the 1840s, 1850s, and 1860s. Along many portions of the trail—from the Missouri River all the way to Idaho—the trail is shared with the California, Mormon Pioneer, and Pony Express national historic trails.*

**KEY PARTNERS/COOPERATORS:** Oregon-California Trails Association and its chapters, Bureau of Land Management, US Forest Service, NPMAP, Harpers Ferry Center, Oglala Lakota College, Humboldt State University, NPS's Midwest Regional Office, and Innovators Educational Foundation.

### KEY ACHIEVEMENTS:

- Prepared an Oregon Trail mobile app for visitors with hearing impairments, assisted by such partners as the Bureau of Land Management, US Forest Service, NPMAP, Harpers Ferry Center, and various privately-owned sites along the trail. Project began with a ten-day trail reconnaissance in October 2016 with 84 sites selected, primarily from Auto Tour Route sites, and site photos taken. Trails staff worked with the contractor to complete the app by summer 2017. The final product was presented to the OCTA board of directors at its annual meeting.



Echo Meadows and its swales, located southwest of Stanfield, OR, was featured in the recently released Oregon Trail app.

- Prepared substantial portions of a comprehensive plan for the 46-mile trail system in the greater Kansas City (MO/KS) area, in cooperation with the Mid-America Regional Council, which is the designated Metropolitan Planning Organization for this area, and Vireo, a consulting landscape architecture firm.
- Jointly authored a paper on the building of the transcontinental railroad and its impacts on emigration, stagecoach, and mail traffic along the central trails by two trails employees. The paper was presented at Oregon-California Trails Association's annual meeting and also published in OCTA's *Overland Journal*. Although the transcontinental railroad connected Omaha, NE with Sacramento, CA—and thus went hundreds of miles south of Oregon—the railroad's completion, in 1869, had a substantial impact on Oregon Trail traffic.





Scott Spring Park, located in Westmoreland, KS, is on the Oregon and California national historic trails. The wagon and team, with appropriate interpretation, are featured on the new Oregon Trail app.



At the BLM Oregon Interpretive Center, near Baker City, trails staff worked with partners to improve the center's American Indian interpretation.

- Continued working on the multi-year Oglala Lakota filming project. Funded an audio description of the film and reviewed transcripts, received an initial film draft, exhibited it to staff and sent comments to the principal investigator for incorporation into the final product. Project partners included Oglala Lakota College, Humboldt State University, and Director David Scheerer.
- As a follow-up to the four-day charette that was held in August 2016 for the Pappan's Ferry DCP (in Topeka, KS), undertook an extensive review of the document's interpretive component, assisted by Oregon-California Trails Association members and other partners. By the end of the fiscal year, a final document was anticipated. Also, completed and distributed charette-related posters.
- Because much of the route of the Oregon National Historic Trail was subject to a total solar eclipse on August 21, 2017, publicized information about the eclipse on the

OREG/CALI Facebook page and linked this information to the appropriate NPS trail web pages.

- Regarding the (July 2018) American Solar Challenge, held along the approximate Oregon Trail route, incurred significant preparatory work (phone calls, teleconferences, other outreach) with federal agencies, state tourism bureaus, venue locations, and various chambers of commerce along the proposed route. Partners included the agency's Midwest Regional Office, the Oregon-California Trail Association, and Innovators Educational Foundation.
- Placed orders for signs in Johnson County, KS, and later in the fiscal year the signs were delivered and installed.
- Working in cooperation with local OCTA members, completed a draft sign plan for Lawrence, KS.
- Partnering with OCTA members and a local partnership group, initiated a sign planning project in western Nebraska.



One of more than 80 sites selected for the new Oregon Trail app is the Great Platte River Road Archway Monument, near Kearney, NE, which features a statue of two boys fleeing a mid-19th-century Indian attack.

- Wrote, formatted, and printed two newsletters for the Oregon and California national historic trails.
  - Placed newly developed Teacher-to-Ranger-to-Teacher lesson plans on the Oregon NHT web page.
  - Revised the Auto Tour Route guides and maps for both Nebraska/Northeastern Colorado (first published in August 2006) and Wyoming (first published in July 2007). After locating the original files for text, photos, graphics, and maps, staff updated, corrected as necessary, and formatted both volumes and submitted them for publication.
  - Continued the design of seven interpretive panels at Camp Guernsey, WY as a result of collaboration between the National Park Service and camp employees.
  - Submitted a successful CTPP project for American Indian interpretation at Oregon Trail Interpretive Center, near Baker, OR. Partnered with the Bureau of Land Management on the proposal.
- Initiated a planning project at Ash Hollow State Historical Park (Nebraska) related to a Connect Trails to Parks project. Project partner was the Nebraska Game and Parks Department.
  - Initiated project with a University of Missouri graduate student (through the Great Rivers CESU) to determine the impact of the “Bleeding Kansas” and Civil War periods on traffic along the Oregon Trail as well as other long-distance trails.
  - Added four new properties as certified Oregon NHT partners during the year, four of them for more than one national historic trail. The new properties included the following:
    1. Ash Hollow State Historical Park, near Wellen, NE, certified December 31, 2016 (Oregon and California national historic trails)
    2. Fort Kearny State Historical Park, near Kearney, NE, certified December 31, 2016 (Oregon and California national historic trails)
    3. Rock Creek Station State Hist. Park, near Fairbury, NE, certified December 31, 2016 (Oregon and California national historic trails)
    4. Legacy of the Plains Museum, in Gering, NE, certified January 14, 2017 (Oregon and California national historic trails)





Staff with NPS's Vanishing Treasures Program worked with local partners on a preservation plan and structural assessment for the Marysville (Kansas) Pony Express barn.

## PONY EXPRESS NATIONAL HISTORIC TRAIL

*Congress authorized the Pony Express National Historic Trail in 1992. The route connects St. Joseph, MO to Sacramento and San Francisco, CA. Along many portions of the trail—from the Missouri River all the way to California—the trail is shared with the California, Mormon Pioneer, and Oregon national historic trails. The Pony Express rider and his galloping horse have become one of the mythic icons of the American West. The Pony Express, as*

Rock Creek Station State Historical Park, in southeastern Nebraska, was the site of a Pony Express station, as well as being on the Oregon and California national historic trails. Trails staff certified the site in 2017.

*an enterprise, lasted just 19 months during 1860 and 1861, but its fame endures. Many Pony Express enthusiasts enjoy re-creating the thrill of this cross-country ride by participating in the annual re-ride along the route.*

**KEY PARTNERS/COOPERATORS:** National Pony Express Association, NPS's Vanishing Treasures Program, Marysville Pony Express Barn Association, Bureau of Land Management, and the Oregon-California Trails Association.

**KEY ACHIEVEMENTS:** Collaborated with NPS's Vanishing Treasures Program to develop a preservation plan and structural assessment for the Marysville (Kansas) Pony Express Barn. Partnered with the Marysville Pony Express Barn Association.





In Old Sacramento, CA, at the western end of the annual Pony Express Re-ride route, a statue of a galloping rider is adjacent to the B.F. Hastings Building (Wells Fargo office), where a Pony Express office once operated.

- As in previous years, created a Pony Express Re-Ride interactive map for the National Pony Express Association and gave it constant support during the annual mid-June event. This map provided live updates of the locations of the riders on the trail via Global Positioning System (GPS). The map has continued to be popular among members and has become a staple in their re-ride every year. NTIR efforts in this project have been highlighted in various NPS newsletters such as the NPS Intermountain Region (IMR) InterCOMM, *Inside NPS*, IMR GIS Blog, and NPS Geospatial Insights Newsletter.
- Provided technical assistance for one wayside, which was sponsored by the National Pony Express Association. Partnered with the Oregon-California Trails Association.
- Completed Pony Express Stations digital interactive map project, detailing the location and description of the various Pony Express stations.
- Provided financial and technical assistance to National Pony Express Association volunteers with management of their new website.

- Partnered with Eldorado County, and the US Forest Service, on a Federal Lands Access Program (FLAP) application for construction of Brockliss Bridge CA, and prepared a CTTTP application for funding in FY 2018. Immediately to the west, ordered trail signs along the Pollock Pines-to-Placerville route in accordance to a previously-completed sign plan.
- Working with OCTA’s Kanza Chapter, completed a sign plan for the route between the Marysville and Hollenberg Pony Express stations, after which the specified signs were ordered and delivered.
- Partnering with the Bureau of Land Management, responded to a key undertaking—the Gold Bar Mine, in Eureka County, NV—with potential to affect.
- Added three new properties as certified partners for the Pony Express National Historic Trail during the year. The new properties included the following:
  1. Fort Kearny State Historical Park, near Kearney, NE, certified December 31, 2016
  2. Rock Creek Station State Historical Park, near Fairbury NE, certified December 31, 2016
  3. Legacy of the Plains Museum, in Gering, NE, certified January 14, 2017

## SANTA FE NATIONAL HISTORIC TRAIL

*Between 1821 and 1880, the Santa Fe Trail was primarily a commercial highway linking various Missouri River communities with Santa Fe, NM. Today, this well-known trail attracts many visitors and partners and enjoys the support of a very active trail association. Congress authorized the Santa Fe National Historic Trail in 1987. Portions of the trail in eastern Kansas and western Missouri are shared with the California and Oregon national historic trails, while in Santa Fe, the Santa Fe National Historic Trail meets El Camino Real de Tierra Adentro and the Old Spanish national historic trails.*

**KEY PARTNERS/COOPERATORS:** Santa Fe Trail Association and its chapters, City of Santa Fe, Museum of Spanish Colonial Art, Colorado State Historic Preservation Office, Fort Larned National Historic Site, Fort Larned Old Guard, Fort Union National Monument, Harpers Ferry Center, Kansas Historical Society, Middle Tennessee State University, Pecos National Historical Park, University of Missouri, University of New Mexico, and US Forest Service (Cimarron and Comanche National Grassland).

### KEY ACHIEVEMENTS:

- Through a CTTTP project, initiated a partnership with the US Forest Service (Cimarron and Comanche National Grassland) to produce a preservation plan for approximately twenty miles of Santa Fe Trail in southwestern Kansas and southeastern Colorado.

- In partnership with Middle Tennessee State University and the Kansas Historical Society, continued progress on two historic building identification and recording projects in Missouri (Middle Tennessee State University) and Kansas (Kansas Historical Society) to identify and record historic buildings within the Santa Fe National Historic Trail's period of significance (1821-1880) along the trail corridor.
- In collaboration with the Colorado State Historic Preservation Office and the US Forest Service (Comanche National Grassland), listed Iron Springs District on the National Register this year, and two more nominations are being reviewed by the Army Corps of Engineers Federal Preservation Officer.
- Created and posted story maps for the Santa Fe Trail Association's Junior Wagon Master Freighter and Bullwhacker programs. These maps are an interactive version of the booklets for users to visualize the trail while they are going through the activities. The story maps have been published on NTIR's Santa Fe NHT webpage.
- Partnered with the Santa Fe Trail Association, the City of Santa Fe, and the Museum of Spanish Colonial Art, and contracted for development of four trail waysides. Locations included Amelia White Park and the Museum of Spanish Colonial Art, both in Santa Fe, NM.



Pecos National Historical Park

- Initiated project with a University of Missouri graduate student (through the Great Rivers CESU) to determine the impact of the “Bleeding Kansas” and Civil War periods on traffic along the Santa Fe Trail and other long-distance trails.
- Through a CTFP project, provided technical and financial assistance for wayside development on the Cimarron National Grassland, in Morton County, KS. Partners included the Santa Fe Trail Association and the US Forest Service. Signs were ordered, and later delivered, for placement at various Cimarron National Grassland locations.
- Wrote a history of 30 years of cooperation between the National Park Service and the Santa Fe Trail Association, which was published in May 2017 in the Santa Fe Trails Association (SFTA) quarterly publication





The Point of Rocks site, near Elkhart, KS, lies adjacent to the Santa Fe National Historic Trail companion route in the Cimarron National Grasslands. Trails staff worked with US Forest Service partners on wayside development in this area.



Amelia White Park – In 2017, trails staff partnered with the City of Santa Fe on a wayside at Amelia White Park, which is bisected by the Santa Fe National Historic Trail.



Working with partners, trails staff visit Santa Fe National Historic Trail remnants near Point of Rocks, Elkhart, KS, to identify interpretive opportunities.



Autograph Rock, on a privately owned ranch near Boise City, OK, contains hundreds of inscriptions left by Santa Fe National Historic Trail travelers.

*Wagon Tracks.* Additional articles about this 30-year relationship were posted on the agency’s regional newsletter, *IMR Intercomm*, and the agency’s internal, national website, *Inside NPS*.

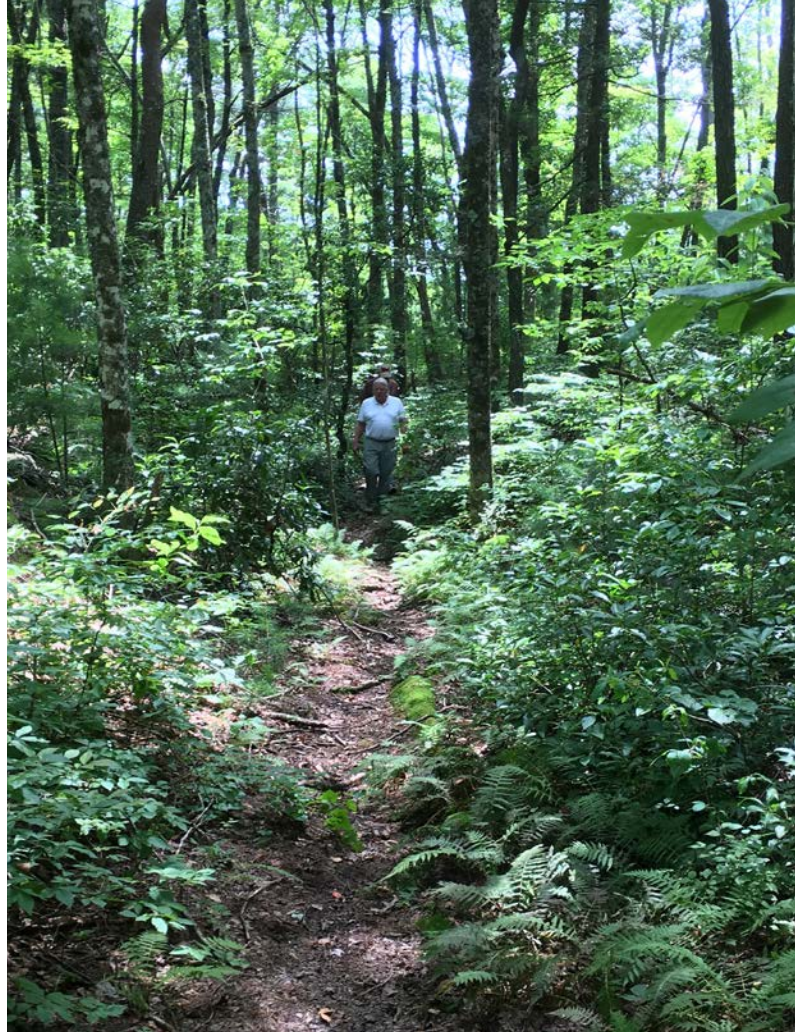
- In cooperation with various museums and the City of Santa Fe, assisted in finalizing a developmental concept plan for future Museum Hill development.
- Worked with a UNM History Department graduate student to complete the Santa Fe Trail place names research and mapping project, funded by UNM’s Career Diversity for Historians Program. Research on name

derivations and linguistic origins of place names served as the basis for interactive maps with clickable popups, located on the agency’s SAFE web page.

- Approved a CTPP project to compile a dual language story map for the Santa Fe Trail corridor in central and western Kansas—based on the area surrounding Fort Larned National Historic Site—in late February 2017. Soon afterward, the Fort Larned Old Guard, a 501(c)(3) group affiliated with the site, hired

a history graduate student, at Emporia State University, to compile historic site information for the story map. Research was ongoing at the close of the fiscal year.

- Placed orders for signs in Johnson County, KS. Later in the fiscal year, the signs were delivered and installed.
- Finalized a sign plan for the trail near Buckner, MO, in eastern Jackson County, after which specific signs were ordered and delivered for installation.
- Added one new property as a certified partner during the year. Rock Creek Crossing, a historic site near Council Grove, KS, was certified on July 11, 2017.
- Posted SAFE-related Teacher to Ranger to Teacher curriculum materials on the trail website by a Denver, CO, area teacher working on a summer internship.
- Created two newsletters for the Santa Fe National Historic Trail during the fiscal year.
- Made significant modifications and improvements to the existing, trail-wide Santa Fe NHT Media Tour. This tour, which has more than 500 stops, now includes closed captioning for all videos. NTIR staff tested the tour at several Santa Fe-area sites during the office's all-hands meeting. Partners included the Santa Fe Trail Association, Pecos National Historical Park, Fort Union National Monument, Bent's Old Fort National Historic Site, Fort Larned National Historic Site, Stephen F. Austin State University, and NPS's Volunteers-in-Parks (VIP) Program.



In Monroe County, TN, trails staff worked with US Forest Service officials and a Western Carolina University professor on a Unicoi Turnpike inventory project.

## TRAIL OF TEARS NATIONAL HISTORIC TRAIL

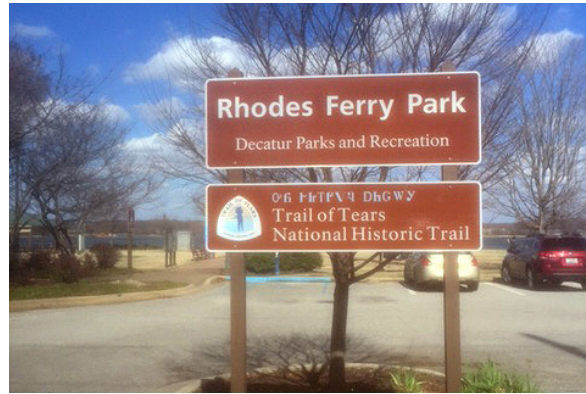
*In 1838, the United States government forcibly removed more than 16,000 Cherokee Indian people from their homelands in Tennessee, Alabama, North Carolina, and Georgia, and resettled them in Indian Territory (now Oklahoma). Trail of Tears National Historic Trail recognizes the removal of the Cherokee and the paths that 17 Cherokee detachments followed westward. Today, the trail encompasses over 5,000 miles of land and water routes, and traverses portions of nine states. The Trail of Tears National Historic Trail was authorized in 1987.*



**KEY PARTNERS/COOPERATORS:** Trail of Tears Association and its chapters, Cherokee Gardens, GA, Cherokee Nation, City of Paducah, KY, Cobb County Parks, Cobb Master Gardeners, Friends of Green Meadows Preserve, Forsythe County Historical Association, Forsyth County Parks and Recreational Department, Fort Defiance State Park, Fort Massac State Park, Hiwassee Heritage Center (Charleston, TN), Hopkinsville (KY) Parks and Recreation, Middle Tennessee State University, Missouri Department of Transportation, Missouri Humanities Council, National Park Foundation, Tennessee Valley Authority, US Army Corps of Engineers, US Forest Service (Cherokee National Forest), and Western Carolina University.

**KEY ACHIEVEMENTS:**

- Continued work with Middle Tennessee State University to develop two heritage development plans (historic structure reports) for important trails sites; submit two National Register nominations; conduct reconnaissance on cultural landscapes in Alabama and Tennessee; and to maintain the recently-completed historic building database.
- Worked with Western Carolina University experts in implementing a historical research and remote sensing project at Fort Cass, TN. (Fort Cass was the Trail of Tears’ starting point for more than half of the 17 Cherokee detachments that headed west in 1838.) Now in its second year of funding, the Fort Cass project has located previously unknown Cherokee encampments through



A significant 2017 project was the development of a Trail of Tears interpretive trail in Decatur, AL.



During 2017, Jill Jensen of the National Trails Intermountain Region (right) met with Rusty Wiseman of the Missouri Department of Transportation at Old Greenville, MO, to discuss future partnerships.



In 2017, trails staff—working with US Forest Service counterparts—completed a preliminary draft Development Concept Plan for Fort Armistead, a Trail of Tears-era site in eastern Tennessee.



archival research, sophisticated mapping, and on-site investigations. In addition, trails staff edited, finalized, and delivered to partners a developmental concept plan for the Charleston/Fort Cass area.

- Completed two wayside projects and initiated three others. These waysides are located at the following locations: 1) Cherokee Garden at Green Meadows, Powder Springs, GA, 2) Paducah, KY, 3) Welch's Mill (Poole's Mill), Forsyth County, GA, 4) Fort Defiance (near Cairo), IL, and 5) Fort Massac, Massac County, IL. Partners for these projects included the Trail of Tears Association, City of Paducah, KY, Cherokee Garden, Cobb County Parks, Cobb Master Gardeners, Friends of Green Meadows Preserve, Forsyth County Historical Association, Forsyth County Parks and Recreational Department, Fort Defiance State Park, and Fort Massac State Park.
- Completed a cooperative agreement with the City of Decatur, AL, in order to implement a Trail of Tears-themed interpretive trail in the downtown area. This project is an outgrowth of a charette-based DCP that was completed several years ago.
- Submitted a successful CTTTP proposal for water route interpretation and signing. Project partners are the Trail of Tears Association and the US Army Corps of Engineers.
- Engaged in numerous signage projects, including in Tuscumbia, AL; Murray County, GA; Anna and Jentel Farms, IL; three Tennessee counties (Benton, Davidson, and Franklin); and Red Clay State Historic Park, TN.
- Worked with the Tennessee Valley Authority and the Southeast Tennessee Development District on a CTTTP project, initiated in 2017, which will result in the construction of 0.5 miles of retracement trail in the Blythe Ferry area (Rhea County). Additional partners included Meigs County, the Friends of the Cherokee Removal Memorial Park, and Trail of Tears Association.
- Met with new Rivers Trails and Conservation Assistance program (RTCA) partners about the Hiwassee River Blueway Project (which will develop 55 miles of this river for water-based recreation). Discussion centered on how the developing blueway might tie into the Trail of Tears retracement trail that is being developed at Blythe Ferry.
- Provided event planning, technical assistance, coordination, and onsite support to the annual Cherokee Remember the Removal Ride. Partners included the Trail of Tears Association, National Park Foundation (via an Active Trails Grant), Cherokee Nation, and communities along the ride corridor.

- Conducted interpretation workshop in Tennessee. Partnered with the Trail of Tears Association, Tennessee chapter.
- Visited sites in Oklahoma, Arkansas, and Missouri to meet with key partners and members of the Trail of Tears Association. Met with volunteers of the Trail of Tears Association, who discussed research on trail mapping; and met with Missouri Department of Transportation's lead archaeologist, Rusty Wiseman, to discuss potential projects. Partners included the Missouri Department of Transportation, Trail of Tears Association, and the Missouri Humanities Council.
- Compiled and completed an interpretive media guide for the trail. A draft version of the guide was presented at the spring 2017 TOTA board meeting, after which comments were gathered from both NTIR staff and TOTA members. The nearly complete guide was shown again at the fall 2017 TOTA meeting and will be completed in fiscal year 2018.
- Represented the National Park Service on the following key undertakings with potential to affect: Four Corners Marina Lease (Davidson County, TN), Tennessee Valley Authority Vegetation Management Plan, Trail of Tears Commemorative Park Disc Golf Proposal (Hopkinsville, KY), Unicoi Turnpike Damage Mitigation (Monroe County, TN) and Diamond Pipeline (between Cushing, OK and Memphis, TN). Partners included Tennessee Valley Authority, US Forest Service, Hopkinsville State Park, and the US Army Corps of Engineers.
- Completed a draft DCP document for Fort Armistead, in Monroe County, TN and sent it out for internal review.
- In the wake of damage sustained to the Unicoi Turnpike in March 2014, met with colleagues from the Cherokee National Forest staff to discuss survey/inventory work on the forest, along with a potential retracement trail project. Assisting on this project was the Tennessee Valley Authority, the Hiwassee Heritage Center (Charleston, TN), and Middle Tennessee State University.
- Placed trail-related rack cards, both for Arkansas/Oklahoma and for the greater Chattanooga area (containing portions of Alabama, Georgia, and Tennessee), along with various travel itineraries, on the trail website.

SECTION FIVE



# NTIR Trails Project Summary

See table 3 for new and completed ONPS base-funded projects for FY 2017.

**TABLE 3.** New and Completed ONPS Base-Funded Projects, FY 2017

Trail(s)	Partner(s)	Project Description
CALI	NPS, Shoshone-Bannock Tribe	City of Rocks National Reserve interpretive wayside project
ELCA	GTI Environmental	Literature Search
ELCA	UNM School of Architecture and Planning	Historic Building Documentation in Bernalillo County
ELCA	Cornerstone Community Partnerships	La Bajada Roadbed Condition Assessment and Pilot Stabilization Project
ELCA	Isleta Pueblo	Historic Roads Survey Project
ELCA	Santa Fe County	Buckman Road Retracement Trail Project
ELCA	AmaTerra, Inc.	Oñate Crossing Cultural Landscape Report / Historic Structures Report
MOPI	Brigham Young University	MOPI Multiple Property Documentation Form and National Register nominations
OLSP	Koosharem Band of Southern Paiute, USFWS	Koosharem Reservoir Exhibit Panels
OLSP	NPF (Active Trails Grant), Mesa County, City of Grand Junction, Grand Valley Trails Alliance, IAWC	Grand Junction (CO) Active Trails Event
OREG	NPMap, BLM, US Forest Service	Oregon Trail Mobile App
OREG/CALI/SAFE	Mid-America Regional Council, Vireo Consulting	Kansas City-area comprehensive trail plan
OREG/CALI/SAFE	University of Missouri	"Bleeding Kansas" study—historical research
OREG/CALI/MOPI	Oglala Lakota College, Humboldt State University	Oglala Lakota filming project
OREG/CALI/MOPI/POEX	Wyoming Military Department	Interpretive panels—design and installation
POEX	Vanishing Treasures Program, Marysville Pony Express Museum	Marysville Barn Preservation Plan and Structural Assessment
ROSI	Research 66	Organization of annual meeting
ROSI	Route 66, the Road Ahead	Organizational support
SAFE	Middle Tennessee State University, Kansas Historical Society	Building Identification and Recording Project in Missouri
TRTE	Middle Tennessee State University	Preparation of two heritage development plans (historic structure reports) and two National Register nominations





City of Rocks National Reserve

Trail(s)	Partner(s)	Project Description
TRTE	Western Carolina University	Fort Cass, TN—historical research and remote sensing project
TRTE	City of Decatur	Design and implementation of Trail of Tears interpretive trail
TRTE	US Forest Service	Development Concept Plan for Fort Armistead, in Monroe County, TN
TRTE	US Forest Service	Unicoi Turnpike survey/inventory work and proposed retracement trail project

## TRAIL WEBSITES

Personnel currently manage ten websites: one for each of the nine national historic trails that the National Trails Intermountain Region either administers or co-administers, plus the NTIR website. The content management system interface that the National Trails Intermountain Region uses to update its ten websites requires constant attention and updating as well as additional information and imagery.

### NEW FEATURES:

- Conducted a navigation and content review, and developed content management strategy for all websites.

- Submitted 6,562 pages of PDF website content to GPO contractor for conversion to 508 compliant versions.
- Developed a social media plan for nine trail media sites that covers as many as 18 social media accounts. Incorporated into the plan is methodology to evaluate the effectiveness of NTIR’s social media, as well as provide accurate virtual visitation statistics. As a by-product of the plan’s completion, created 1) NTIR’s Flickr account, 2) a Facebook Business Manager account that manages all of NTIR’s Facebook and Instagram accounts, and 3) a POEX twitter account.

- Updated the “Places to Go” portion of five websites.
- Analyzed, developed, and began implementing a common site navigation and page title layout for the four northern trails websites.
- Created new education webpages for four trail webpages. A curated list of online lesson plans was entered into the NPS education portal and then linked from new education pages to the portal.
- Added Teacher to Ranger to Teacher NTIR lesson plan into the NPS education portal (see above).
- At a TOTA workshop, demonstrated examples of digital media alternatives to traditional media such as publications or waysides. At the same workshop, incorporated virtual reality into the interpretation training and demonstrated the technique’s usefulness and applicability.
- Sponsored a digital intern from Stephen F. Austin State University, who completed work on a variety of digital media products.

## **VOLUNTEERS-IN-PARKS (VIP) PROGRAM**

This year’s budget allowed the office to extend programmatic support to each partner organization.

### **KEY ACHIEVEMENTS:**

- Undertook major steps to re-design a VIP program.
- Managed VIP funds and program with over 3,000 volunteers contributing over 151,000 hours in trail interpretation, protection, and development.
- Began writing a NTIR VIP guide.
- Served as a contact for TOTA, SFTA, and OSTA volunteers.
- Added a call for hours and a request for expanded highlights and photos. These were received and submitted in October 2017.

## **UNIVERSITY-BASED PARTNERSHIPS**

- Hosted a five-month digital media intern from Stephen F. Austin State University.
- Established relationship with the Stephen F. Austin State University for the purposes of completing NTIR interpretive projects and providing university students with real-time interpretive products. Partners included Stephen F. Austin State University, Trail of Tears Association, Santa Fe Trail Association, and the Army Corps of Engineers.

- Continued, for a third year, working hand-in-hand with the University of New Mexico on a successful memorandum of understanding that results in student internships from several university departments.
- Worked with UNM graduate student on an all-trails vignettes project. In collaboration with the trail associations, student began researching approximately 7-10 people for each national historic trail. The purpose is to tell the stories of the trails through a diversity of voices. The final narratives can be modified, if needed, in order to be used for interpretive exhibits and waysides, podcasts, social media, and web pages.
- Worked with UNM to develop an interdisciplinary trails course, to be taught during the fall of 2018. A History Department graduate student was hired to work with a professor on course development.
- Initiated project with a University of Missouri graduate student (through the Great Rivers CESU) to determine the impact of the “Bleeding Kansas” and Civil War periods on traffic along the Oregon, California, and Santa Fe national historic trails.

## **GEOGRAPHIC INFORMATION SYSTEMS**

Geographic Information Systems is an integral part of trails programming, as its products are used routinely by in-house and independent researchers, program managers, cultural resource specialists, planners, interpreters, and the public.

The NTIR GIS program, operated by the staff on the RIM Team, oversees the development and ongoing maintenance of the GIS data for the Route 66 Corridor Preservation Program and nine national historic trails. In addition to the in-house hours devoted by full-time NTIR staff, staff continues to work with the University of Utah’s Department of Geography DIGIT Lab under a multiyear cooperative agreement established between the National Park Service and the university. The DIGIT Lab assists in the management of the geodatabase for the nine national historic trails. The DIGIT Lab also serves as an additional repository for trail data, and it provides technical advice and assistance as needed.

### **KEY ACHIEVEMENTS:**

- Continued a relationship with the University of Utah DIGIT Lab staff and students, and continued its CESU agreement. This past year, the DIGIT Lab participated in several projects such as the Route 66 Corridor Review, sign plan maintenance and map creation.



- Coordinated various GIS projects for interns at the University of New Mexico. Some of these projects included making story maps, working on ArcGIS Online, and helping to edit trail data sets.
- Created a new database following Federal Trail Data Standards for all of the national historic trails that the National Trails Intermountain Region administers. These standards ensure that the data provides appropriate information and uniformity when distributed.
- Posted its Federal Trail Data Standards database to the Integrated Resource Management Applications web site. This is the data store for the National Park Service from which the public can download data.
- Created a poster for the 2017 ESRI User Conference that showcased NTIR's sign plan program and how the creation of sign plans can be facilitated through Geographic Information Systems. This poster was displayed to a conference that had 17,000+ attendees.
- Participated in various GIS workgroups including the New Mexico Geographic Information Council, Utah Information Council, Salt Lake Users Group, New Mexico Geographic Alliance, Trails Consortiums, National Trail System Data Collection Initiative, and the Federal Trail Data Standards Interagency Group.
- Continued as the co-lead for the National Trails System GIS Network, engaging other trail partners and offices (primarily through the sponsorship of a monthly teleconference) to exchange information.

## RESOURCE ADVOCACY AND PROTECTION

The number of requests to the National Trails Intermountain Region for consultation on large energy projects rose sharply since FY 2016. Those requests that do come forward are nonfederal undertakings proposed for private lands. The National Trails Intermountain Region remains active, however, in a number of large energy projects that were initiated several years ago. In addition, NTIR staff plays a consulting role in environmental compliance processes for several federal land exchanges, mining operations, pipelines, and other developments.

The National Trails Intermountain Region represented the National Park Service in 186 compliance reviews for external undertakings with potential to affect one or more of nine national historic trails. Some of the key undertakings are identified by trail (see the Trail Administration section). Many of the undertakings were energy development projects led by the Bureau of Land Management and/or the Federal Energy Regulatory Commission. NTIR's role is to help the federal lead agency avoid, minimize, or mitigate adverse impacts and



The dramatic growth of transmission line projects in the southwest, such as this one in Utah, has impacted many areas along the Old Spanish National Historic Trail.

effects to the national historic trails. Partners consisted of the various land management agencies, primarily the Bureau of Land Management, Tennessee Valley Authority, US Forest Service, US Fish & Wildlife Service, and the US Army Corps of Engineers.

Specifically, the National Trails Intermountain Region participated in the following undertakings with potential to affect the national historic trails:

- Nebraska Public Power District Transmission Line R project
- Boardman to Hemingway Transmission Line in Idaho and Oregon
- Gateway West Segments 8 and 9 in Wyoming/Idaho (cooperating agency)



These overland trail ruts in the Nebraska Sand Hills, near Sutherland, were a primary pathway for the Oregon, California, and Pony Express national historic trails. They are under imminent threat as a result of a proposed transmission line from the Nebraska Public Power District's R-Project.

- Riley Ridge CO2 Pipeline in Wyoming (cooperating agency)
- Continental Peak Grazing Fences and Enclosures in Wyoming
- Pipeline Replacement on Sublette Cutoff in Wyoming
- Cooper Spur-Government Camp Land Exchange in Oregon
- Utah State Institutional Trust Lands Administration solar proposal
- BLM Rock Springs, Wyoming Field Office Resource Management Plan Revision (cooperating agency)
- Long Canyon Gold Mine in Nevada
- Centennial Reservoir project in California
- Tennessee Valley Authority Transmission System Vegetation Management Plan
- Interstate 10 Corridor Project in California
- Rio Grande Forest Plan Revision in Colorado

The National Trails Intermountain Region represented the National Park Service in compliance activities on the Section 368 Energy Corridor Designation Project, with potential to affect the following seven national historic trails: El Camino Real de Tierra Adentro National Historic Trail, El Camino Real de los Tejas National Historic Trail, California National Historic Trail, Oregon National Historic Trail, Mormon Pioneer National Historic Trail, Pony Express National Historic

Trail, and the Old Spanish National Historic Trail. (These corridors were mandated by the Energy Policy Act of 2005.) Partner included the Bureau of Land Management.

Members of NTIR's Cultural Resources Team initiated a series of monthly Compliance E-blasts for distribution to trail partnership organizations, to encourage awareness, responsibility, and information sharing on all nine national historic trails concerning federal undertakings and other potential threats to the trails. Partners included all trail partnership organizations.



### **ROUTE 66 CORRIDOR PRESERVATION PROGRAM**

Congress created the Route 66 Corridor Preservation Program to preserve and commemorate the special places and stories of the American icon, Route 66. The program works with the eight states through which the route passes to raise awareness about the history and significance of the route, identify

preservation needs and strategies, and to facilitate collaboration among the states. The program provides technical and financial assistance to preserve the most significant and representative historic properties dating to the highway's period of historic significance (1926-1985). It also assists with preservation planning, research, and educational initiatives.





Cost-share grants resulted in the rehabilitation of the Tropics Coffee Shop marquee in Lincoln, IL (left) and an assessment and evaluation of Route 66's historic bridges (right).

**KEY COOPERATORS/PARTNERS:** Local, state, federal, and tribal agencies, Route 66 associations, statewide preservation organizations, educational institutions, State Historic Preservation Offices, departments of transportation, environmental protection agencies, the Road Ahead Initiative, private individuals, and others.

**KEY NATIONAL ACHIEVEMENTS FOR THE ROUTE 66 CORRIDOR PRESERVATION PROGRAM IN FY 2017 INCLUDED THE FOLLOWING:**

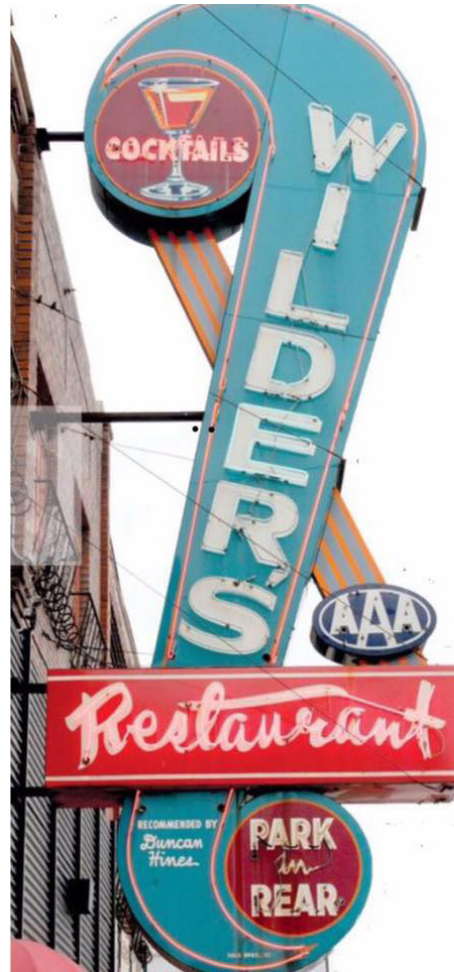
- Successfully worked with the periodical Southern California Quarterly to publish an article that, among other conclusions, identified Negro Motorist Green Book sites along Route 66 in the Los Angeles area and their relationship to segregation patterns.
- Provided project coordination, review, and guidance to the Latino Heritage Internship Program UNM intern for the summer

2017 New Mexico Hispanic Heritage of Route 66 story map project. Helped organize a presentation, by another intern, of the Route 66 Hispanic Heritage project at UNM's Zimmerman Library.

- Facilitated the ongoing development of Research Route 66, an organization with representatives from ten archival institutions. Also, organized the group's annual meeting, which was sponsored by the New Mexico Route 66 Association.
- Provided organizational support to Route 66 Road Ahead Partnership, which was organized to represent advocates in all eight Route 66 states.
- Developed a memorandum of understanding to increase projects with American Indian Tribes, partnering with the American Indian Alaska Native Tourism Association.



Cost-share grants in 2017 assisted partners with the development of a database for Texas historic properties in Texas (above), a documentary about “Women on the Mother Road” (below), and the restoration of the Wilder’s Steak House marquee in Joplin, MO (right).



- Oversaw the completion of the California Route 66 Historic Property and Road Alignment Survey (Outer Metro Region), written by the California Preservation Foundation. The same foundation began work on the California Route 66 Historic Property and Road Alignment Survey (Metro Region).
- Digitized hundreds of maps and gathered various data from outside sources, such as state transportation departments, to create a comprehensive alignment for Route 66

by the DIGIT Lab. These alignments were placed in map books that gave partners the opportunity to review the mapped data and give feedback about the alignment before the alignment was finalized.

- Monitored the completion of the Arizona Route 66 Roadbed Survey, written by the Arizona Department of Transportation, and assisted the New Mexico Department of Transportation and the New Mexico State University with the New Mexico Route 66 Road Alignment Survey.



**TABLE 4. ROSI Cost Share Projects FY 2017**

<b>Grant Name</b>	<b>Project Description</b>	<b>Cost Share</b>	<b>Partner Match</b>
<b>Texas Route 66 Historic Property Online Database</b>	Resurvey of a 2002 historic building survey, plus conversion of findings to an online database	\$13,532	\$18,668
<b>Route 66 Bridge Assessment and Prioritization Project</b>	Development and implementation of a framework to prioritize bridges for preservation along Route 66.	\$7,550	\$24,784
<b>The Women on the Mother Road: Documentary Film</b>	Film will explore the Route 66 corridor from women’s perspective	\$25,000	\$25,000
<b>Trucking on Route 66 in Missouri Oral History Project</b>	Oral interviews with 20 people, recording experiences and stories of the Route 66 trucking industry	\$5,105	\$5,697
<b>Online Educational Guide to Route 66 in California</b>	Creating a comprehensive online educational resource about the route, and points of interest, in California	\$6,000	\$6,484
<b>Wilder’s Neon Sign Restoration Project</b>	Restoration/Relighting of a Rooftop Restaurant Marquee in Joplin, MO	\$24,000	\$24,000
<b>Tropics Neon Sign Restoration Project</b>	Moving, Restoration, and Interpretation of a Restaurant Marquee in Lincoln, IL	\$17,000	\$28,500
<b>Total</b>		<b>\$98,187</b>	<b>\$133,133</b>

- Mentored Hispanic Legacy of Route 66 Intern, at the University of New Mexico for the third consecutive summer. The Latino Heritage Internship Program’s student involvement was sponsored by Environment for the Americas.
- Other ROSI-related accomplishments included 1) development of the draft

Route 66 Interpretive Guidelines, 2) the continued development of the ROSI GIS database, 3) maintaining the ROSI website, 4) overseeing the annual cost share grant program (see table 4), and 5) serving as a Section 106 consulting party for a number of proposed development projects.



