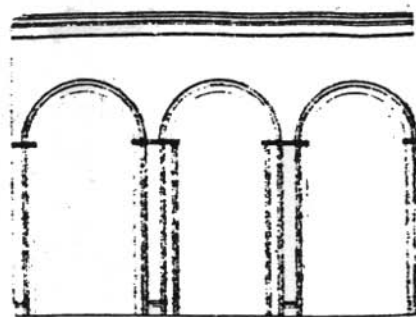
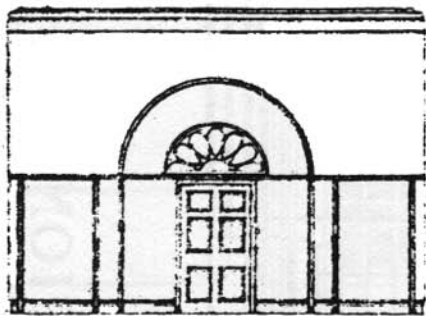


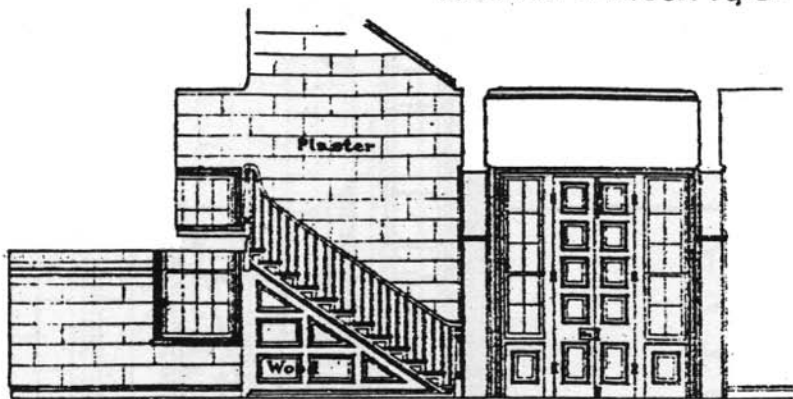
8. North Side. 7.



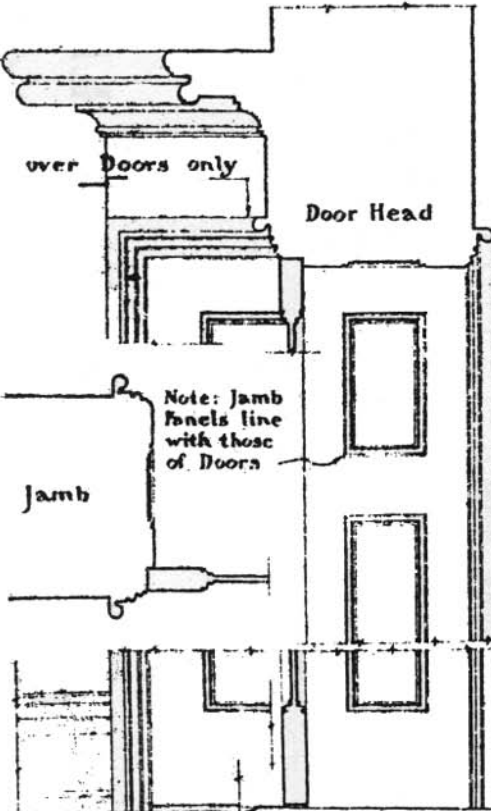
Arches between 7 & 8.



West Side.



West Side

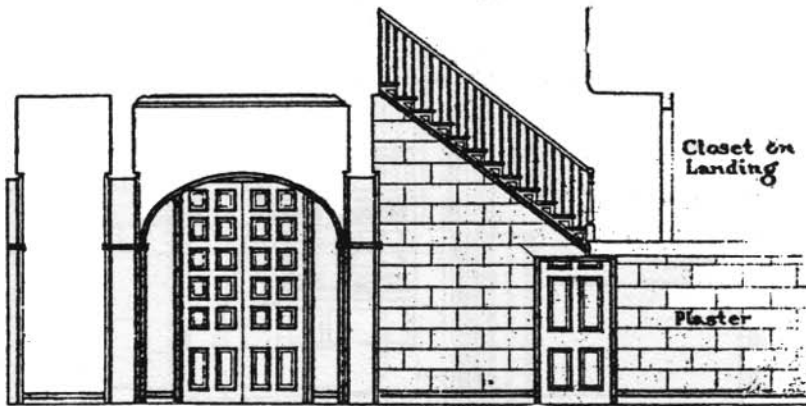


over Doors only

Door Head

Note: Jamb Panels line with those of Doors

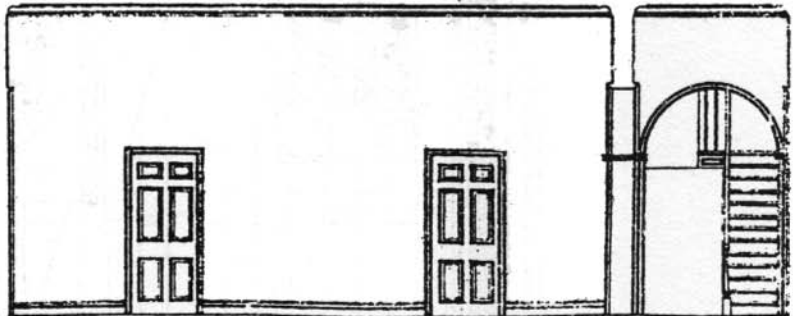
Jamb



Clset on Landing

Plaster

East Side



SOUTH SIDE
ELEVATIONS OF HALL
Scale of All Elevations: 1/4" = 1' 0"

DOOR IN ROOMS 7 AND 8
Scale: 1" = 1' 0"

ARLINGTON HOUSE, ARLINGTON NATIONAL CEMETERY
MEASURED DRAWINGS BY RODIER & KUNDZIN, ARCHITECTS