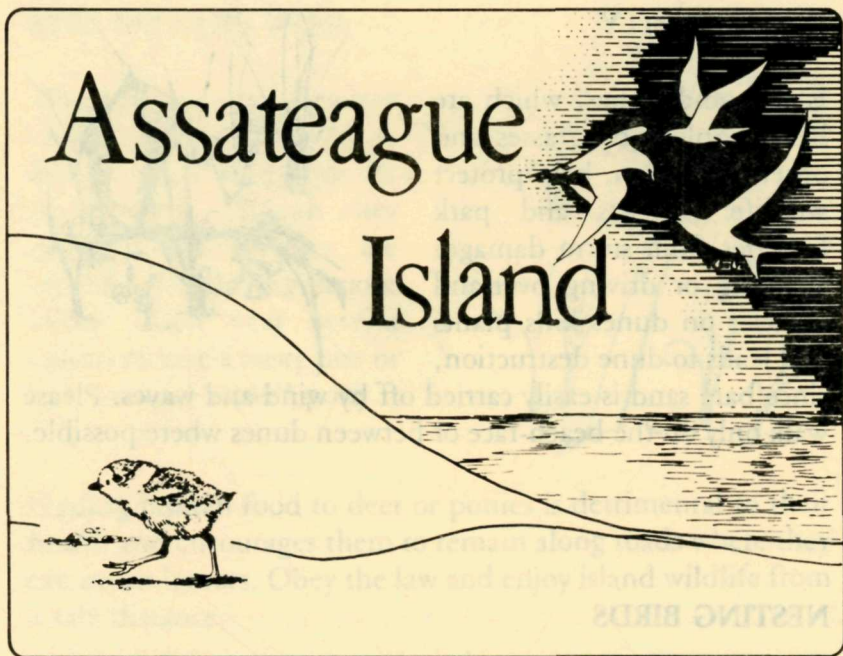


Assateague Island



TREAT ASSATEAGUE WITH CARE

National Park Service
U.S. Department of the Interior



Barrier islands like Assateague are among the most fragile lands protected by the National Park Service. Help us care for the endangered piping plover and other island wildlife.

WALK GENTLY

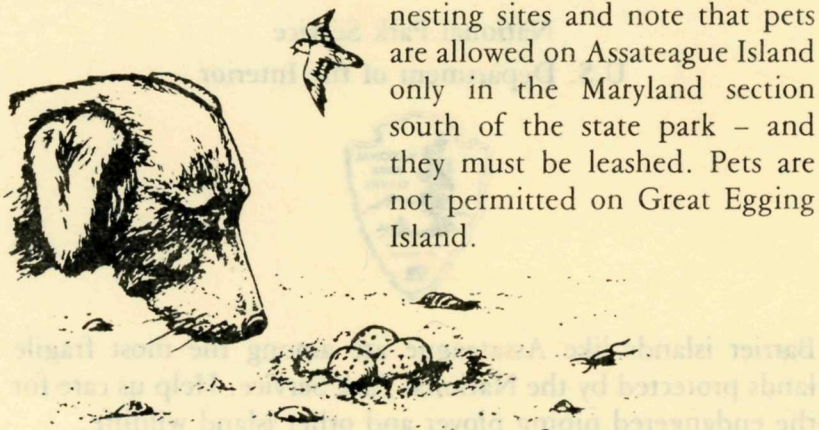
Island sand dunes, which are held in place by grasses and other vegetation, help protect wildlife habitats and park facilities from storm damage. Walking or driving oversand vehicles on dunes kills plants and leads to dune destruction, since bare sand is easily carried off by wind and waves. Please walk only on the beach-face or between dunes where possible.



NESTING BIRDS

Many shorebird species, including the endangered piping plover, need undisturbed stretches of beach or open inner dunes for nesting. Parent birds must sit on their eggs for long periods to protect them from the hot sun. Intrusion into nesting areas by visitors and dogs is especially harmful because parent birds are forced to leave the nest and developing embryos die from overheating. Please stay clear of posted bird

nesting sites and note that pets are allowed on Assateague Island only in the Maryland section south of the state park – and they must be leashed. Pets are not permitted on Great Egging Island.

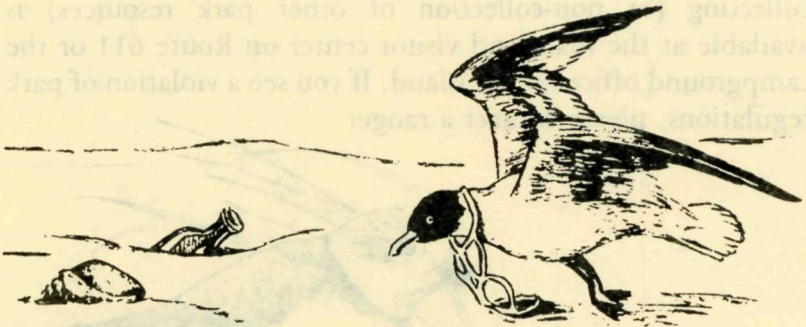


KEEP WILDLIFE WILD

Close interaction between visitors and wild horses or deer is often dangerous for all involved. Though they appear tame, ponies are capable of inflicting serious injury. Each year several visitors receive a nasty bite or kick from a "tame" pony.



Feeding human food to deer or ponies is detrimental to their health and encourages them to remain along roads where they can be hit by cars. Obey the law and enjoy island wildlife from a safe distance.

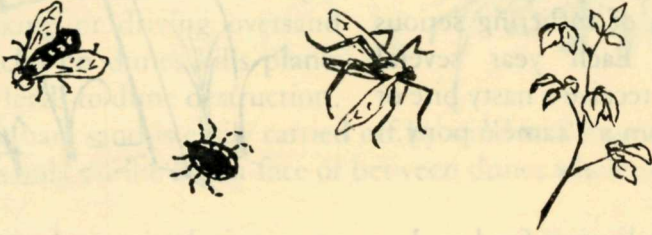


LETHAL LITTER

Discarded plastic six-pack rings and old fishing line can be deadly to birds that become entangled in them. Garbage may also attract animals that prey on bird eggs and chicks – and all litter spoils Assateague's beauty. Please pack out trash or use a container.

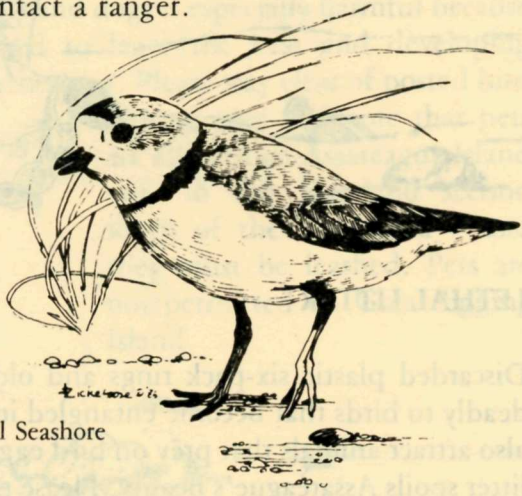
BE AWARE

Ticks, mosquitos, biting flies, and poison ivy can ruin a visit if you're not prepared to cope with them. The potential for tick-related diseases does exist on Assateague. Check with a ranger for more information.



REGULATIONS

Become familiar with park regulations before you visit. Information on beach fires, pets, boat access, oversand vehicle use, surf fishing, overnight stays, posted areas, and shell collecting (or non-collection of other park resources) is available at the mainland visitor center on Route 611 or the campground office on the island. If you see a violation of park regulations, please contact a ranger.



Assateague Island National Seashore
Route 2 Box 294
Berlin, Maryland 21811
301-641-1441 or 641-3030

Piping Plover