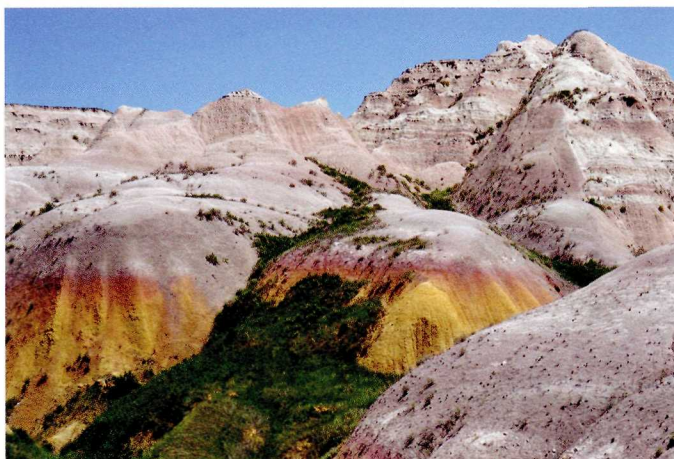




Explore the Badlands

No words of mine can describe these Bad Lands. One set of buttes, with cones and minarets, gives place in the next mile to natural freaks of different variety never dreamed of by mortal man....The painter's whole palette is in one bluff.

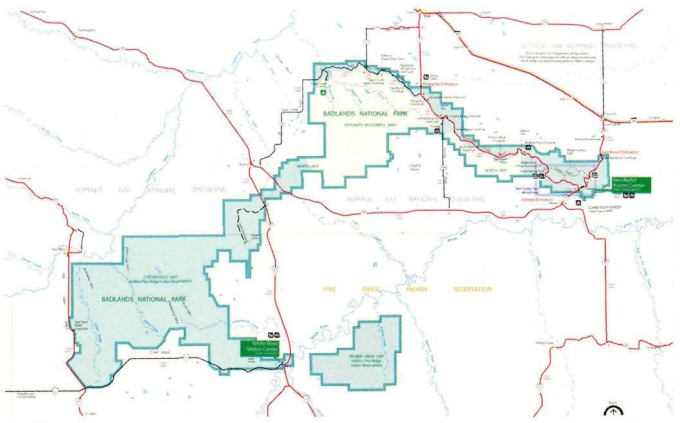
--Frederick Remington, American Landscape Painter and Explorer



Yellow Mounds are the deposits from the Western Interior Seaway and show an eye-catching contrast of color.

The rugged beauty of the Badlands formations draws visitors from around the world. These striking geologic deposits contain one of the world's richest fossil beds. Ancient mammals such as the rhino, horse, and camel once roamed here. The park's 244,000 acres protect an expanse of mixed-grass prairie where bison, bighorn sheep, prairie dogs, and black-footed ferrets live today.

- Located in southwestern South Dakota, Badlands was established as a National Monument in 1939 and was later designated as a National Park in 1978.
- The south half of the park is located on the Pine Ridge Indian Reservation and is co-managed with the Oglala Sioux Tribe.
- The Badlands Wilderness Area covers 64,250 acres and served as the reintroduction site for bison.



Badlands National Park is an easy loop off Interstate 90 from either direction or accessed from South Dakota Highway 44.

Directions

Easiest access is from Interstate 90 at exits 131 (Cactus Flat) or 110 (Wall). Drive south to park entrance stations.

The Badlands Loop Road (Hwy 240) is a 27 mile meander through the formations accessed from either entrance. Badlands National Park is approximately 75 miles east of Rapid City, South Dakota.

What To Expect

Badlands National Park experiences weather extremes - summers can reach 100°F while winters may be well below freezing. Be prepared for any weather with layers of clothing, sunscreen, water, and sturdy walking shoes. A series of short trails (400 yards to 10 miles round trip) are located near park headquarters at Cedar Pass, just two miles from the town of Interior.

An entrance fee is collected year round.

The Ben Reifel Visitor Center is open 362 days per year - closed on New Year's, Thanksgiving, and Christmas. The White River Visitor Center is open seasonally, call for more information. Park remains open year-round.

The park has paved and unpaved roads. Check at the visitor center or entrance station for information on road conditions before setting out on unpaved roads.

Pets are not allowed on trails or in the backcountry.

For information on volunteering or special events contact:

Division of Resource Education
badl_information@nps.gov

Badlands National Park
25216 Ben Reifel Road
Interior, SD 57750
605-433-5361
<http://www.nps.gov/badl/>