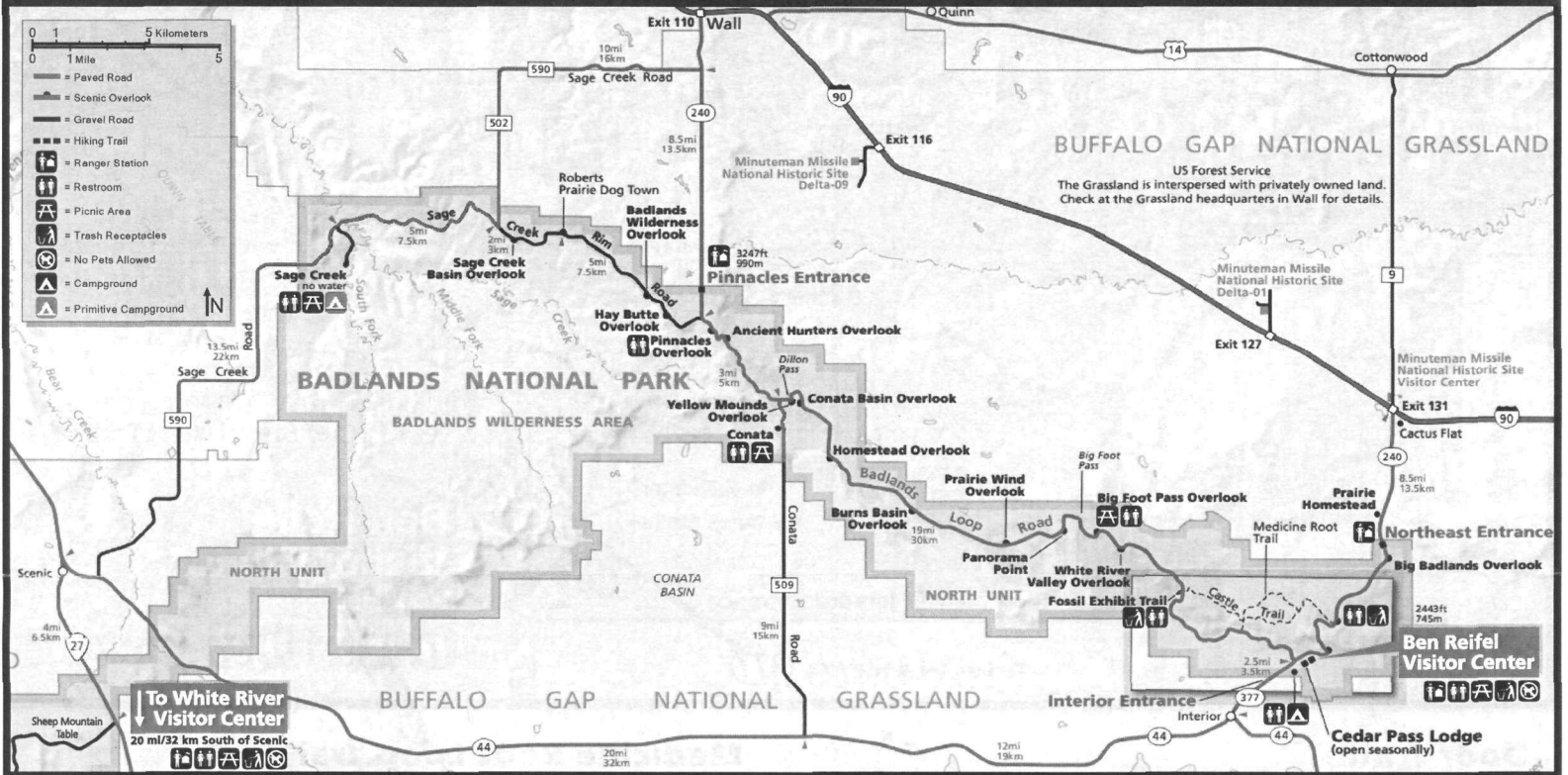


Badlands National Park



VISITOR CENTERS

Ben Reifel Visitor Center

Open year-round - Sunday through Saturday

Located in the Cedar Pass area, 8 miles from I-90 Exit 131 and approximately 20 miles from Exit 110.

Badlands Natural History Association, located inside the Ben Reifel Visitor Center, offers Passport books, postcards, stickers, T-shirts, books, and other Badlands merchandise.

White River Visitor Center

Open Seasonally

Located on the Pine Ridge Reservation off HWY 27 and BIA 2.

ACCESSIBILITY

The Ben Reifel and White River Visitor Centers are wheelchair accessible. Accessible trails include Door, Window, and Fossil Exhibit Trails. Cedar Pass Lodge dining room and giftshop are accessible, along with campground bathrooms. Accessible campsites are available.

PETS

Pets are **NOT** permitted in facilities, on or off trails, in the Wilderness Area, or in any backcountry area. Pets **MUST** be leashed when in designated areas. Be a responsible pet owner and pick up after your pet, do not leave pets unattended in hot vehicles, and be courteous to other visitors.

Service animals are an exception to most pet restrictions but must be leashed. **Emotional Support Animals** DO NOT qualify as service animals under ADA guidelines.

FOOD, LODGING, AND CAMPING

Cedar Pass Lodge and Campground

Open seasonally

Located near Ben Reifel Visitor Center, Cedar Pass Lodge is the only restaurant and lodging inside the park offering cabins, electric hook-up campsites, and non-electric sites. Summer amenities include cold running water, coin operated showers, flush toilets, covered picnic tables, and trash containers. Winter amenities are limited to vault toilets, covered picnic tables, and trash containers. An RV dump station is available with a per use fee. **NO open campfires.**

www.CedarPassLodge.com

605-433-5460

20681 HWY 240

Interior, SD 57750

Sage Creek Campground

Open year-round

Located in the Wilderness Area. Amenities include vault toilets, covered picnic tables, and trash containers. No water available. No camping fees or reservations. First-come, first-served. 14-day limit. No vehicles greater than 18 feet. **NO open campfires.**

Backcountry Camping

No permit required. Campsite must be 0.5 miles from any road or trail and campers must not be visible to other visitors. **Practice Leave No Trace Principles. No open campfires.**

Picnic Areas

Located at Big Foot Pass Overlook, Conata Picnic Area, and both White River and Ben Reifel Visitor Centers.

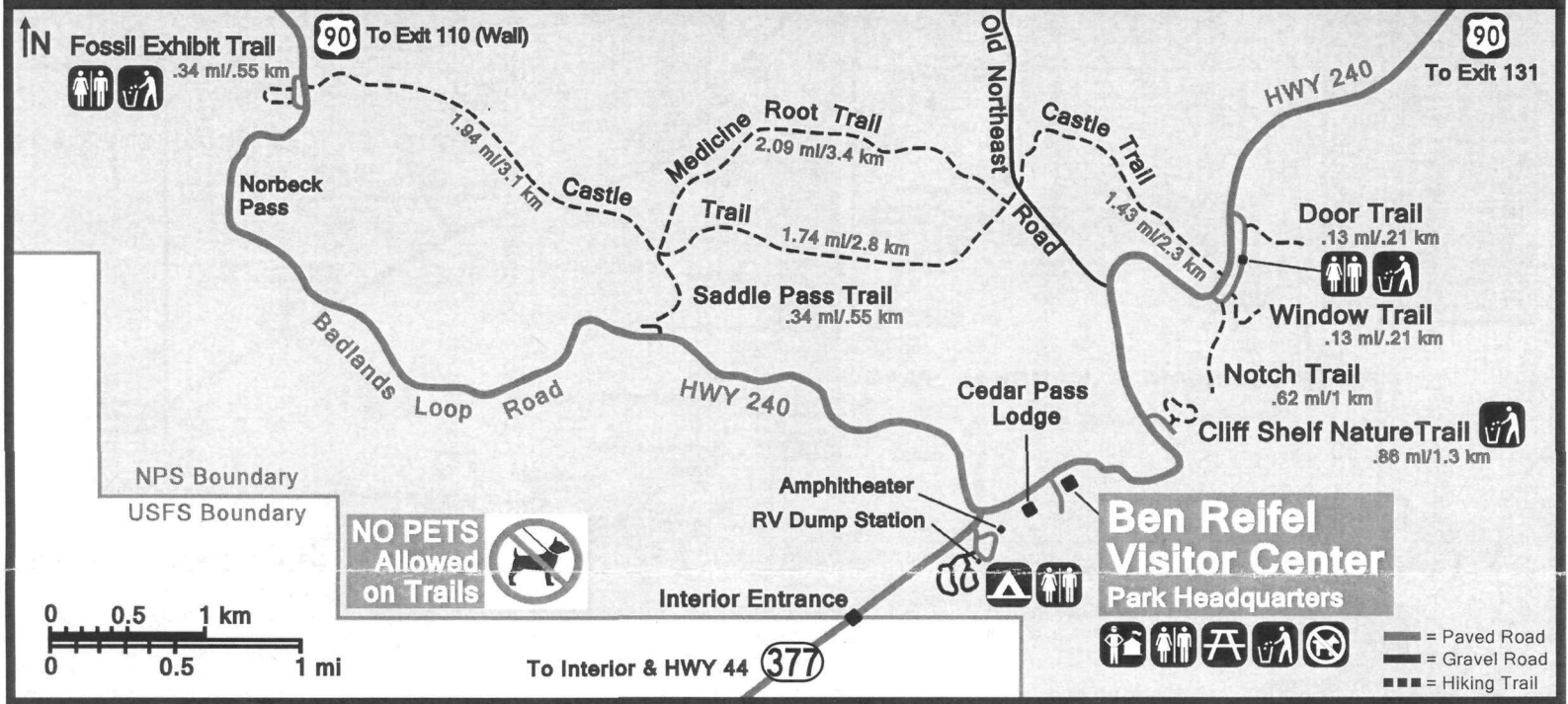
KNOW THE PARK RULES

Illegal Activity in a National Park is a Federal Offense - Please Report Unusual Activity to Park Staff

DO NOT Approach Wildlife - Stay a Minimum Distance of 100 Feet Away

NO Off-Roading, Drone Use, Hunting, or Collecting, Moving, or Removing Fossils, Rocks, Artifacts, or Plants

Established Hiking Trails in Badlands National Park



Door Trail

Easy - 20 minutes round trip
 Boardwalk - 0.26 mi/0.4 km round trip
 This hike begins with an accessible 226-yard boardwalk leading through a break in the Badlands Wall known as "the Door" to an overlook viewing the Badlands. Beyond the boardwalk, a series of posts mark the remainder of the trail through the Badlands formations.

Window Trail

Easy - 20 minutes round trip
 0.26 mi/0.41 km round trip
 This short, accessible, boardwalk trail leads to a natural window in the Badlands Wall with a view of an intricately eroded canyon.

Notch Trail

Moderate to Strenuous - 1.5 to 2 hours round trip
 1.25 mi/2 km round trip
 This trail leads through a canyon, climbs up a rope ladder, and follows a ledge to "the Notch" for a dramatic view of the White River Valley. Watch for dropoffs and loose gravel. Notch trail is NOT recommended for anyone with a fear of heights. The trail can be treacherous during and after rains. Caution is advised.

Castle Trail

Moderate - 5 hours round trip
 10.2 mi/16.45 km round trip
 This is the longest established trail in the Badlands stretching from the Door and Window parking lot to Fossil Exhibit Trail. This relatively level path passes through Badlands formations. Castle Trail can be divided into shorter hikes. Bring plenty of water.

Medicine Root Loop Trail

Moderate - 2 hours round trip
 4.18 mi/6.73 km round trip
 This trail provides the opportunity to explore the mixed-grass prairie while enjoying views of the Badlands in the distance. Medicine Root trail can be accessed by parking at the pull-off along Old Northeast Road or by hiking Castle or Saddle Pass trails to their intersections with Medicine Root trail.

Cliff Shelf Nature Trail

Moderate - 30 minutes round trip
 0.86 mi/1.38 km round trip
 This loop trail is a combination of boardwalks, stairs, and natural paths that climbs approximately 200 feet in elevation. The trail weaves through juniper trees perched along the Badlands Wall and is a popular area for birdwatching.

Saddle Pass Trail

Strenuous - 40 minutes round trip
 0.68 mi/1.09 km round trip
 This short trail aggressively climbs up the Badlands Wall to a summit overlooking the White River Valley where it connects with Castle and Medicine Root Loop Trails. Saddle Pass trail is treacherous during and after rains and can be dangerous during extreme heat. Caution is advised.

Fossil Exhibit Trail

Easy - 20 minutes round trip
 Boardwalk - 0.34 mi/.55 km round trip
 This fully accessible boardwalk loop trail features fossil replicas and exhibits of now extinct creatures that once roamed the Badlands area.

Badlands National Park allows hiking throughout the park. Visitors hiking off-trail do so at their own risk. Vehicles must be parked in designated areas.

Stay Safe!

Carry Plenty of Water!

Enjoy Your Hike!